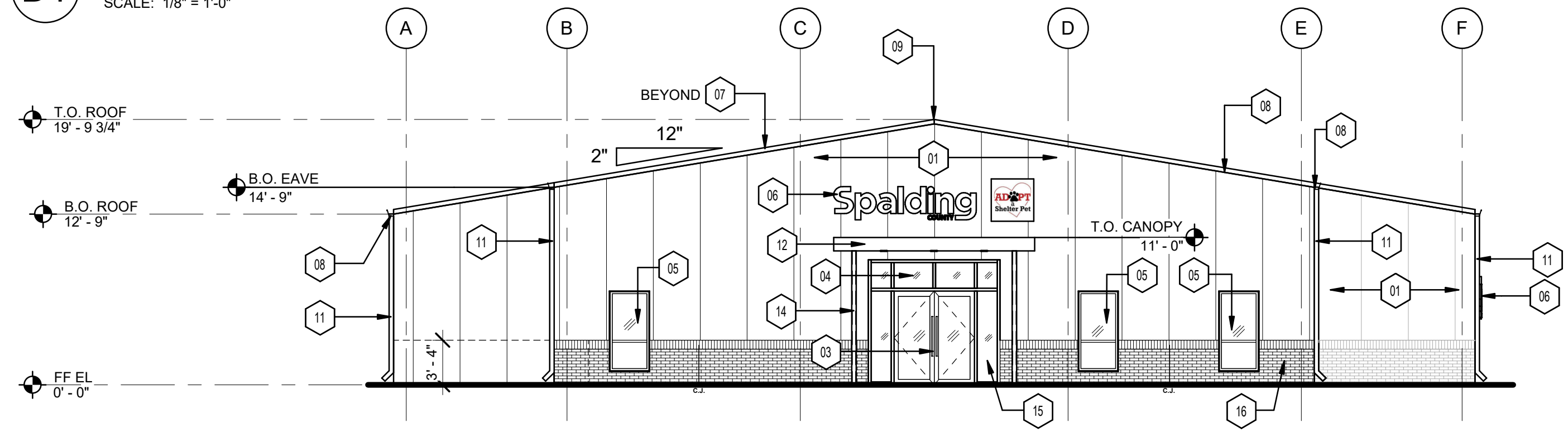


1 2 3 4 5

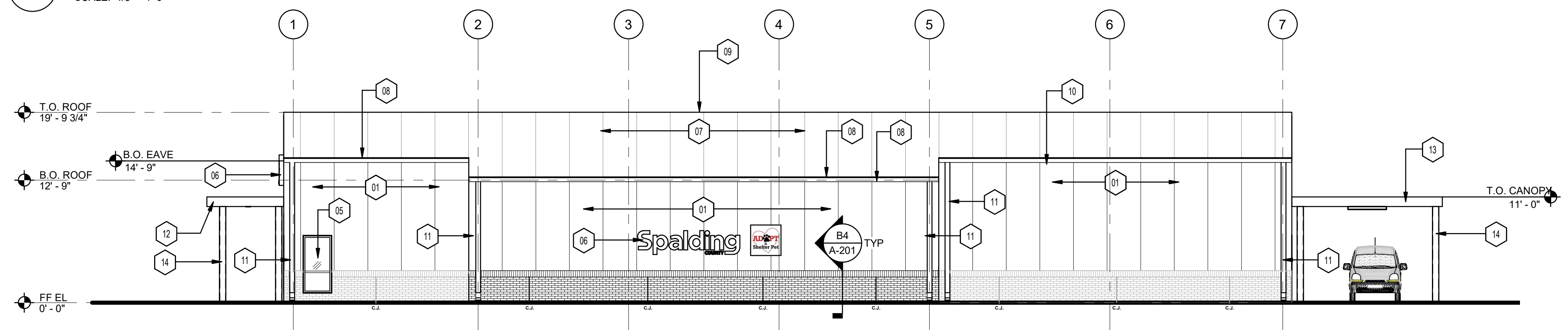
KEYNOTES:
 (KEYNOTE NUMBERS ARE UNIFORM ACROSS ALL SHEETS AND SOME MAY NOT BE REQUIRED ON THIS SHEET)

ELEVATIONS KEYNOTE LEGEND	
KEYNOTE	DESCRIPTION
01	INSULATED PRE-ENGINEERED METAL WALL PANEL
02	HOLLOW METAL DOOR & FRAME
03	ALUMINUM STOREFRONT SWING GLASS DOORS
04	ALUMINUM STOREFRONT SYSTEM
05	ALUMINUM FIXED WINDOW W/ 1" INSULATING GLASS
06	BUILDING SIGNAGE (BY OWNER)
07	INSULATED PRE-ENGINEERED ROOFING PANEL
08	PEMB ROOFING RAKE EDGE FLASHING
09	PEMB ROOFING RIDGE CAP FLASHING
10	6" BEVELED, 26 GAUGE, PREFINISHED METAL GUTTER SYSTEM
11	4" RECTANGULAR, 26 GAUGE, PREFINISHED DOWNSPOUT & SPLASH-BLOCK
12	METAL ENTRY CANOPY SYSTEM (ADD ALTERNATE)
13	METAL DRIVE-UP CANOPY SYSTEM (ADD ALTERNATE)
14	CANOPY COLUMNS
15	INSULATING ALUMINUM STOREFRONT & WINDOW SYSTEM
16	EXTERIOR THINK BRICK PANELS

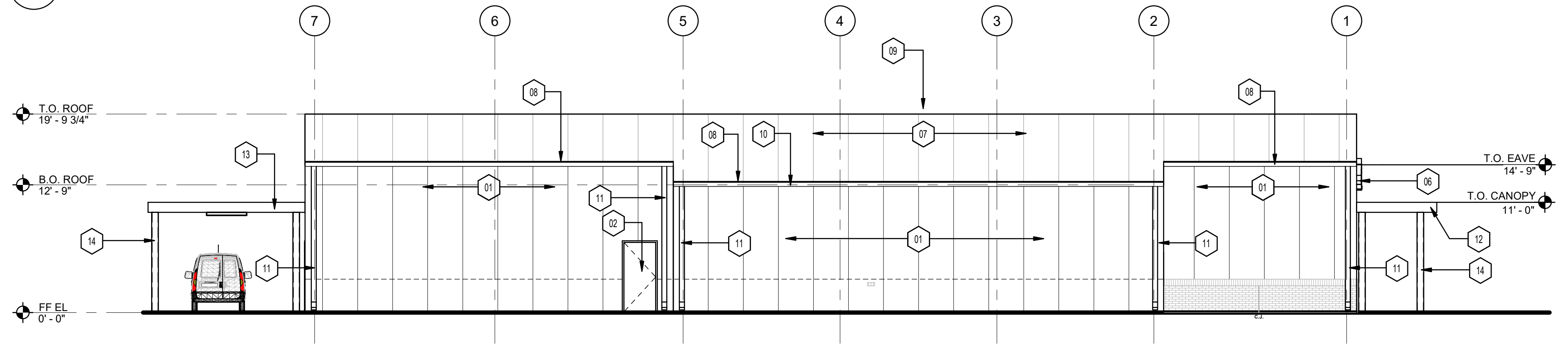
D1 WEST ELEVATION
 SCALE: 1/8" = 1'-0"



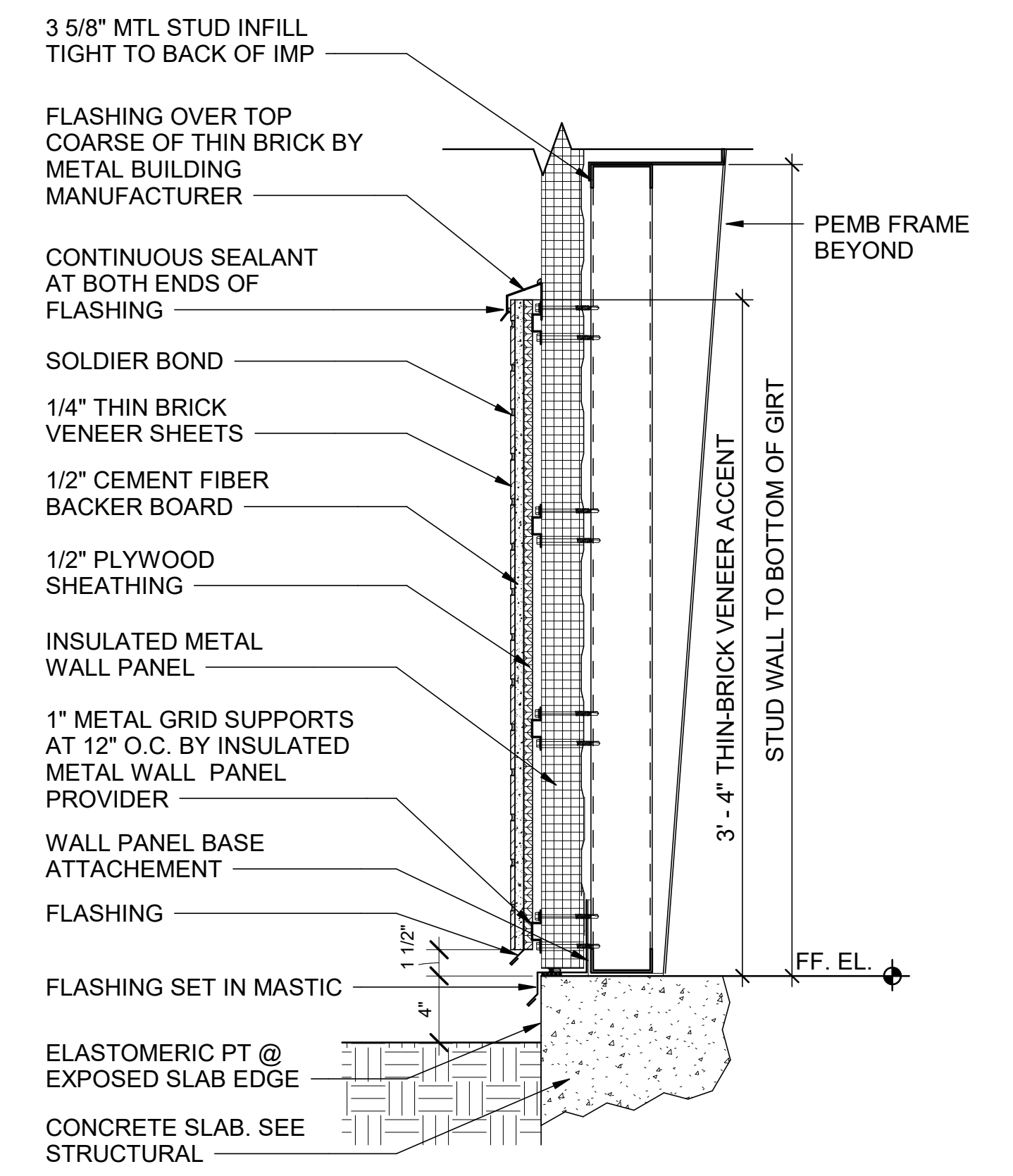
C1 EAST ELEVATION
 SCALE: 1/8" = 1'-0"



B1 NORTH ELEVATION
 SCALE: 1/8" = 1'-0"



A1 SOUTH ELEVATION
 SCALE: 1/8" = 1'-0"



B4 EXTERIOR THIN BRICK VENEER PANEL DETAIL
 SCALE: 1 1/2" = 1'-0"

STAMP/SEAL	
	DATE
	MARK
DESIGNED BY: DRAWN BY: CHECKED BY: SUBMITTED BY: SIZE:	ISSUE DATE: DATE PLOTTED: CONTRACT NO.: POND PROJ. NO.: FILE NAME:
SPCO ANIMAL SHELTER 208 JUSTICE BOULEVARD GRIFFIN, GA 30224	
POND Pond & Company, Inc. 105 Justice Boulevard Griffin, Georgia 30224 Phone (770) 535-7410 Fax (770) 535-7414 Job No. 1200399	
SPALDING CO. ANIMAL SHELTER 105 JUSTICE BOULEVARD GRIFFIN, GA 30224	
EXTERIOR ELEVATIONS	
SHEET ID A-201 SHEET OF	

7/15/2020 12:51:09 PM BIM 360://1200399 - Spalding Animal Shelter/1200399 SPALD_AN_SHEL_Arch_V19.rvt