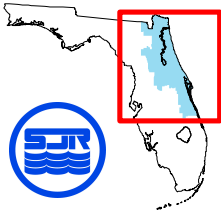


**St. Johns River Water Management District
Mowing Regions**

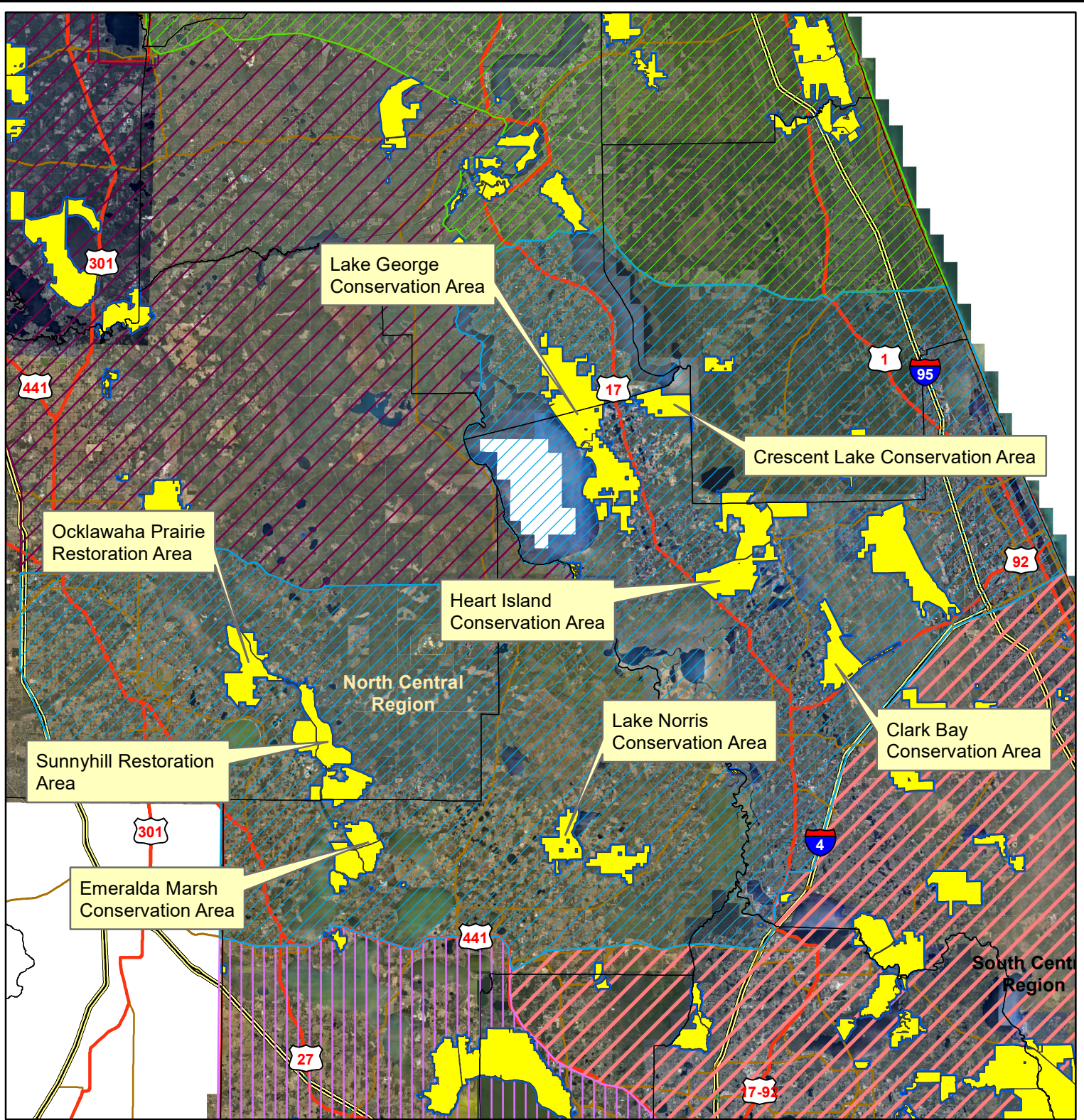


70 35 0 70 Miles



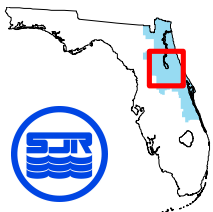
1 = 1800000





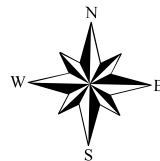
St. Johns River Water Management District

North Central Region - Properties



10 5 0 10 Miles

1 = 600000



North Central Region Counties

- Marion County
- Lake County
- Volusia County
- Flagler County
- Putnam County

Clark Bay Conservation Area

Large Machine Mowing

Road Name	Mowing Type Standard /Levee	Frequency	Width Range (feet)	Average Width (feet)	Road Lenth (miles)	Acres (Calculated)
Road 1	Standard	Modified Monthly	21 - 30 feet	25	2.98	9.0
Road 13	Standard	Modified Monthly	11 - 15 feet	15	0.78	1.4
Road 14	Standard	Modified Monthly	21 - 30 feet	25	0.65	2.0
Road 15	Standard	Modified Monthly	31 - 40 feet	28	1.73	5.8
Road 16	Standard	Modified Monthly	21 - 30 feet	25	0.5	1.5
Road 18a	Standard	Modified Monthly	21 - 30 feet	25	0.98	3.0
Road 18b	Standard	Modified Monthly	21 - 30 feet	25	1.05	3.2
Road 19	Standard	Modified Monthly	05 - 10 feet	15	0.1	0.2
Road 2	Standard	Modified Monthly	11 - 15 feet	15	0.2	0.4
Road 24a	Standard	Modified Monthly	21 - 30 feet	25	0.8	2.4
Road 3	Standard	Modified Monthly	11 - 15 feet	15	0.4	0.8
Road 4	Standard	Modified Monthly	11 - 15 feet	15	0.1	0.2
Road 5	Standard	Modified Monthly	11 - 15 feet	15	0.2	0.3
Road 6	Standard	Modified Monthly	11 - 15 feet	15	0.1	0.2
Road 7	Standard	Modified Monthly	11 - 15 feet	15	0.2	0.3
Road 8	Standard	Modified Monthly	11 - 15 feet	15	0.3	0.5
Road 9	Standard	Modified Monthly	11 - 15 feet	15	0.6	1.1
Jolly Ford Rd	Standard	Modified Monthly	11 - 15 feet	15	0.7	1.2
Sandy Lane 1	Standard	Modified Monthly	11 - 15 feet	15	0.2	0.4
Sandy Lane 2	Standard	Modified Monthly	21 - 30 feet	25	1.0	2.9
Total Modified Monthly:						36.8
Total Semi-Annual:						0.0
Total Standard Mowing Acres:						36.8

Heart Island Conservation Area
Large Machine Mowing

Road Name	Mowing Type Standard /Levee	Frequency	Width Range (feet)	Average Width (feet)	Road Lenth (miles)	Acres (Calculated)
Anderson Island Rd	Standard	Modified Monthly	21 - 30 feet	25	1.0	2.9
Banard Rd	Standard	Modified Monthly	21 - 30 feet	25	1.2	3.7
Bee Rd	Standard	Modified Monthly	21 - 30 feet	25	0.7	2.0
Bones Rd	Standard	Modified Monthly	21 - 30 feet	25	0.9	2.7
Bones Rd North	Standard	Modified Monthly	21 - 30 feet	25	0.1	0.4
Buckles Road Extension	Standard	Modified Monthly	05 - 10 feet	15	0.7	1.3
Bullpen Rd	Standard	Modified Monthly	21 - 30 feet	25	1.5	4.5
Center Road 1	Standard	Modified Monthly	21 - 30 feet	25	1.0	3.0
Chessor Rd	Standard	Modified Monthly	11 - 15 feet	25	0.7	2.2
Chimney Rd	Standard	Modified Monthly	21 - 30 feet	25	2.3	7.1
Cut Rd	Standard	Modified Monthly	11 - 15 feet	15	1.1	2.0
Deep Creek Rd	Standard	Modified Monthly	21 - 30 feet	25	4.5	13.8
Flagler Rd	Standard	Modified Monthly	11 - 15 feet	20	0.7	1.7
Flat Rd	Standard	Modified Monthly	21 - 30 feet	25	3.3	9.8
Grove Rd	Standard	Modified Monthly	11 - 15 feet	15	0.4	0.7
Herre Rd	Standard	Modified Monthly	11 - 15 feet	15	0.3	0.6
Island Rd	Standard	Modified Monthly	21 - 30 feet	25	2.2	6.7
Rail Tram Rd	Standard	Modified Monthly	11 - 15 feet	15	0.5	0.9
Redbeard Rd	Standard	Modified Monthly	11 - 15 feet	15	0.7	1.2
Still Rd	Standard	Modified Monthly	11 - 15 feet	15	1.0	1.8
Strawn Rd	Standard	Modified Monthly	21 - 30 feet	30	0.7	2.7
Tram Rd	Standard	Modified Monthly	21 - 30 feet	15	0.7	1.2
Trot Rd	Standard	Modified Monthly	11 - 15 feet	15	0.6	1.2
Truck Trl 11	Standard	Modified Monthly	21 - 30 feet	25	1.1	3.3
Truck Trl 12	Standard	Modified Monthly	21 - 30 feet	25	2.2	6.8
Wells Rd	Standard	Modified Monthly	21 - 30 feet	25	0.4	1.1
West Rd 1	Standard	Modified Monthly	11 - 15 feet	15	1.0	1.8
West Rd 2	Standard	Modified Monthly	12 - 15 feet	15	0.2	0.3
Total Modified Monthly:						87.4

<i>Total Semi-Annual:</i>	<i>0.0</i>
<i>Total Standard Mowing Acres:</i>	<i>87.4</i>

Crescent Lake Conservation Area

Large Machine Mowing

Road Name	Mowing Type Standard /Levee	Frequency	Width Range (feet)	Average Width (feet)	Road Lenth (miles)	Acres (Calculated)
Camp Road	Standard	Modified Monthly	11 - 15 feet	15	0.20	0.4
Road 1a	Standard	Modified Monthly	11 - 15 feet	15	0.30	0.5
Road 1b	Standard	Modified Monthly	12 - 15 feet	15	0.80	1.5
Road 1c	Standard	Modified Monthly	13 - 15 feet	15	0.40	0.7
Road 2	Standard	Modified Monthly	11 - 15 feet	15	1.00	1.8
Road 3	Standard	Modified Monthly	11 - 15 feet	15	0.30	0.5
Road 5	Standard	Modified Monthly	11 - 15 feet	15	0.90	1.6
Total Modified Monthly:						7.0
Total Semi-Annual:						0.0
Total Standard Mowing Acres:						7.0

Lake George Conservation Area
Large Machine Mowing

Road Name	Mowing Type Standard /Levee	Frequency	Width Range (feet)	Average Width (feet)	Road Lenth (miles)	Acres (Calculated)
Aces Rd	Standard	Modified Monthly	21 - 30 feet	25	1.7	5.2
Barr's Rd	Standard	Modified Monthly	21 - 30 feet	25	1.8	5.3
Combie Rd	Standard	Modified Monthly	21 - 30 feet	25	1.4	4.2
Denver Rd 1	Standard	Modified Monthly	21 - 30 feet	25	0.8	2.4
Denver Rd 2	Standard	Modified Monthly	21 - 30 feet	25	0.4	1.2
Dog Leg Rd	Standard	Modified Monthly	11 - 15 feet	15	1.1	2.0
Fenery Rd	Standard	Modified Monthly	11 - 15 feet	15	0.9	1.6
Fill Rd	Standard	Modified Monthly	11 - 15 feet	15	2.1	3.8
Joe Pittman Rd	Standard	Modified Monthly	21 - 30 feet	25	0.3	0.9
Jumping Gully Ext	Standard	Modified Monthly	21 - 30 feet	30	0.7	2.6
Jumping Gully Rd	Standard	Modified Monthly	21 - 30 feet	25	1.6	4.9
Loop Rd North	Standard	Modified Monthly	11 - 15 feet	15	1.2	2.2
Loop Rd South	Standard	Modified Monthly	21 - 30 feet	25	0.8	2.4
Lyons Mills Rd	Standard	Modified Monthly	21 - 30 feet	25	1.0	3.0
Middle Rd	Standard	Modified Monthly	21 - 30 feet	25	1.7	5.2
Mike Brooks Rd	Standard	Modified Monthly	31 - 40 feet	35	1.2	5.1
Mills Rd	Standard	Modified Monthly	21 - 30 feet	25	0.9	2.7
Otter Rd	Standard	Modified Monthly	21 - 30 feet	25	1.4	4.2
Patty Wiggins Rd	Standard	Modified Monthly	11 - 15 feet	15	0.9	1.6
Pine Island Rd	Standard	Modified Monthly	15 -25 feet	20	0.4	1.0
Road 3	Standard	Modified Monthly	21 - 30 feet	25	0.2	0.6
Sand Hill Rd	Standard	Modified Monthly	21 - 30 feet	25	1.1	3.3
Sand Pit Rd	Standard	Modified Monthly	15 -25 feet	15	0.6	1.1
Scrub Rd	Standard	Modified Monthly	11 - 15 feet	15	1.0	1.8
Shooting Range Rd	Standard	Modified Monthly	11 - 15 feet	15	0.4	0.7
Silver Pond Rd	Standard	Modified Monthly	21 - 30 feet	25	3.1	9.4
Spur No. 1	Standard	Modified Monthly	21 - 30 feet	25	0.4	1.2
Troy Rd	Standard	Modified Monthly	21 - 30 feet	25	1.0	3.1
Truck Trl 1a	Standard	Modified Monthly	21 - 30 feet	25	1.8	5.5
Truck Trl 1b	Standard	Modified Monthly	11 - 15 feet	15	0.1	0.2
Total Modified Monthly:						88.4

<i>Total Semi-Annual:</i>	<i>0.0</i>
<i>Total Standard Mowing Acres:</i>	<i>88.4</i>

**Ocklawaha Prairie Restoration Area
Large Machine Mowing**

Road Name	Mowing Type Standard /Levee	Frequency	Width Range (feet)	Average Width (feet)	Road Lenth (miles)	Acres (Calculated)
Bay Rd	Standard	Modified Monthly	11 - 15 feet	15	0.5	0.9
Bear Poop Rd	Standard	Modified Semi-Monthly	11 - 15 feet	15	0.2	0.4
Camp Rd	Standard	Modified Monthly	11 - 15 feet	15	0.2	0.4
Chornobyl Rd	Standard	Modified Monthly	21 - 30 feet	25	1.5	4.6
Clay Pit Rd	Standard	Modified Monthly	11 - 15 feet	25	0.4	1.2
Cut Through Rd	Standard	Modified Monthly	11 - 15 feet	15	0.3	0.6
Doe Rd	Standard	Modified Monthly	21 - 30 feet	25	1.0	3.0
Fox Rd	Standard	Modified Monthly	21 - 30 feet	25	1.4	4.2
Grassy Pond Rd	Standard	Modified Monthly	21 - 30 feet	25	0.4	1.2
Heart Road	Standard	Modified Semi-Monthly	21 - 30 feet	30	0.2	0.7
Magnolia Rd	Standard	Modified Monthly	11 - 15 feet	15	0.2	0.4
Melon Field Rd	Standard	Modified Monthly	21 - 30 feet	25	0.4	1.2
Old Celery Farm Rd	Standard	Modified Semi-Monthly	31 - 40 feet	25	0.7	2.0
Pine Island Rd	Standard	Modified Monthly	11 - 15 feet	25	0.8	2.4
Pine Rd	Standard	Modified Semi-Monthly	21 - 30 feet	25	0.2	0.6
SE 85th St/Ocklawaha Farms Rd	Standard	Modified Semi-Monthly	21 - 30 feet	25	0.2	0.6
Spur Rd	Standard	Modified Monthly	21 - 30 feet	25	0.3	0.9
Tiger Den Rd	Standard	Modified Monthly	21 - 30 feet	25	1.0	3.0
Wiregrass Rd	Standard	Modified Semi-Monthly	11 - 15 feet	15	0.2	0.4
Wood Duck Rd 1	Standard	Modified Semi-Monthly	31 - 40 feet	30	3.8	13.8
Wood Duck Rd 2	Standard	Modified Monthly	31 - 40 feet	30	1.8	6.6
Wood Duck Rd 3	Standard	Modified Semi-Monthly	21 - 30 feet	15	0.1	0.2
L-212	Levee	Modified Monthly	150 - 200 feet	180	5.5	121.0
Total Standard Modified Semi Monthly:						49.3
Total Levee Modified Semi MonthlyAcres:						121.0

Sunnyhill Restoration Area
Large Machine Mowing

Road Name	Mowing Type Standard /Levee	Frequency	Width Range (feet)	Average Width (feet)	Road Lenth (miles)	Acres (Calculated)
Sunnyhill						
"A" Levee 1	Standard	Modified Semi-Monthly	31 - 40 feet	30	1.4	5.1
"A" Levee 2	Standard	Modified Semi-Monthly	31 - 40 feet	30	0.7	2.6
B-C Levee East	Standard	Modified Semi-Monthly	31 - 40 feet	30	0.5	1.8
Bear Hammock Rd	Standard	Modified Semi-Monthly	21 - 30 feet	25	0.7	2.1
Blue House Rd 2	Standard	Modified Semi-Monthly	16 - 20 feet	25	0.1	0.3
Camp Rd	Standard	Modified Semi-Monthly	21 - 30 feet	25	0.6	1.8
Center Rd 1	Standard	Modified Semi-Monthly	21 - 30 feet	30	1.4	5.1
Center Rd 2	Standard	Modified Semi-Monthly	41 - 50 feet	45	1.1	6.0
Center Rd 3	Standard	Modified Semi-Monthly	31 - 40 feet	35	1.7	7.2
Center Rd 4	Standard	Modified Semi-Monthly	31 - 40 feet	35	1.7	7.2
Crazy 8 Rd	Standard	Modified Semi-Monthly	21 - 30 feet	25	0.2	0.6
Crooked Rd	Standard	Modified Semi-Monthly	11 - 15 feet	15	1.2	2.2
Kayle Martin Rd	Standard	Modified Semi-Monthly	21 - 30 feet	25	0.5	1.5
Loblolly Rd	Standard	Modified Semi-Monthly	21 - 30 feet	25	0.7	2.1
Oak Cove Rd	Standard	Modified Semi-Monthly	21 - 30 feet	25	0.6	1.8
River Rd	Standard	Modified Semi-Monthly	11 - 15 feet	15	0.2	0.4
Silage Bin Rd	Standard	Modified Semi-Monthly	21 - 30 feet	25	0.3	0.9
Sink Hole Rd	Standard	Modified Semi-Monthly	21 - 30 feet	25	0.7	2.1
South A Rd	Standard	Modified Semi-Monthly	16 - 20 feet	20	0.1	0.2
South Levee	Standard	Modified Semi-Monthly	31 - 40 feet	35	0.5	2.1
Spike Rd	Standard	Modified Semi-Monthly	21 - 30 feet	25	0.3	0.9
Stockpile Rd 1	Standard	Modified Semi-Monthly	21 - 30 feet	25	0.5	1.5
Stockpile Rd 2	Standard	Modified Semi-Monthly	21 - 30 feet	25	0.6	1.8
Sunnyhill Farms Rd 2	Standard	Modified Semi-Monthly	21 - 30 feet	25	0.4	1.2
Wood Duck Rd	Standard	Modified Semi-Monthly	21 - 30 feet	25	0.1	0.3
Yellow Pine Rd	Standard	Modified Semi-Monthly	21 - 30 feet	25	0.5	1.5
Sunnyhill Farms South Field	Standard	Modified Semi-Monthly	N/A	N/A	N/A	3.6
Sunnyhill Farms North Field	Standard	Modified Semi-Monthly	N/A	N/A	N/A	9.8
Moss Bluff Field	Standard	Modified Semi-Monthly	N/A	N/A	N/A	6.0
Sunnyhill South						
Central Loop	Standard	Modified Monthly	31 - 40 feet	30	0.8	2.9
Dike Rd	Standard	Modified Monthly	21 - 30 feet	15	0.6	1.1
Dove Field Rd 1	Standard	Modified Monthly	11 - 15 feet	15	0.5	0.9
East Gate Rd	Standard	Modified Monthly	11 - 15 feet	15	0.6	1.1

Sunnyhill Restoration Area

Large Machine Mowing

Road Name	Mowing Type Standard /Levee	Frequency	Width Range (feet)	Average Width (feet)	Road Lenth (miles)	Acres (Calculated)
Fly'n R Grade	Standard	Modified Monthly	11 - 15 feet	15	1.0	1.8
Molasses Feeder Rd	Standard	Modified Monthly	11 - 15 feet	15	0.9	1.6
North Loop Rd	Standard	Modified Monthly	21 - 30 feet	25	2.1	6.4
Rifle Range Rd	Standard	Modified Monthly	11 - 15 feet	15	0.4	0.7
South Loop	Standard	Modified Monthly	31 - 40 feet	30	1.1	4.0
Stagecoach Rd	Standard	Modified Monthly	11 - 15 feet	15	1.3	2.4
Summer Grade	Standard	Modified Monthly	21 - 30 feet	15	0.8	1.5
Sunnyhill West						
Road 1	Standard	Modified Monthly	41 - 50 feet	45	2.9	15.8
Road 2	Standard	Modified Monthly	41 - 50 feet	45	1.0	5.5
Road 3	Standard	Modified Monthly	21 - 30 feet	24	0.5	1.5
Road 4	Standard	Modified Monthly	16 - 20 feet	29	0.8	2.8
Road 5	Standard	Modified Monthly	21 - 30 feet	28	0.9	3.0
Road 6	Standard	Modified Monthly	21 - 30 feet	24	0.6	1.8
Road 7	Standard	Modified Monthly	21 - 30 feet	28	0.8	2.7
Road 8	Standard	Modified Monthly	31 - 40 feet	30	1.1	4.0
Road 9	Standard	Modified Monthly	16 - 20 feet	17	0.4	0.8
Road 10	Standard	Modified Monthly	31 - 40 feet	30	0.3	1.1
Road 11	Standard	Modified Monthly	21 - 30 feet	25	0.4	1.2
Fisher Rd	Standard	Modified Monthly	21 - 30 feet	24	0.3	0.9
Levees						
C-231 a	Levee	Modified Semi-Monthly	100 - 150 feet	133	7.2	116.0
B-C Levee West	Levee	Modified Semi-Monthly	21 - 30 feet	25	0.3	0.9
C-D Levee	Levee	Modified Semi-Monthly	21 - 30 feet	25	0.7	2.1
E-Levee	Levee	Modified Semi-Monthly	31 - 40 feet	35	0.5	2.1
Total Standard Modified Semi Monthly:						79.7
Total Standard Modified Monthly:						65.5
Total Levee Modified Semi MonthlyAcres:						121.1

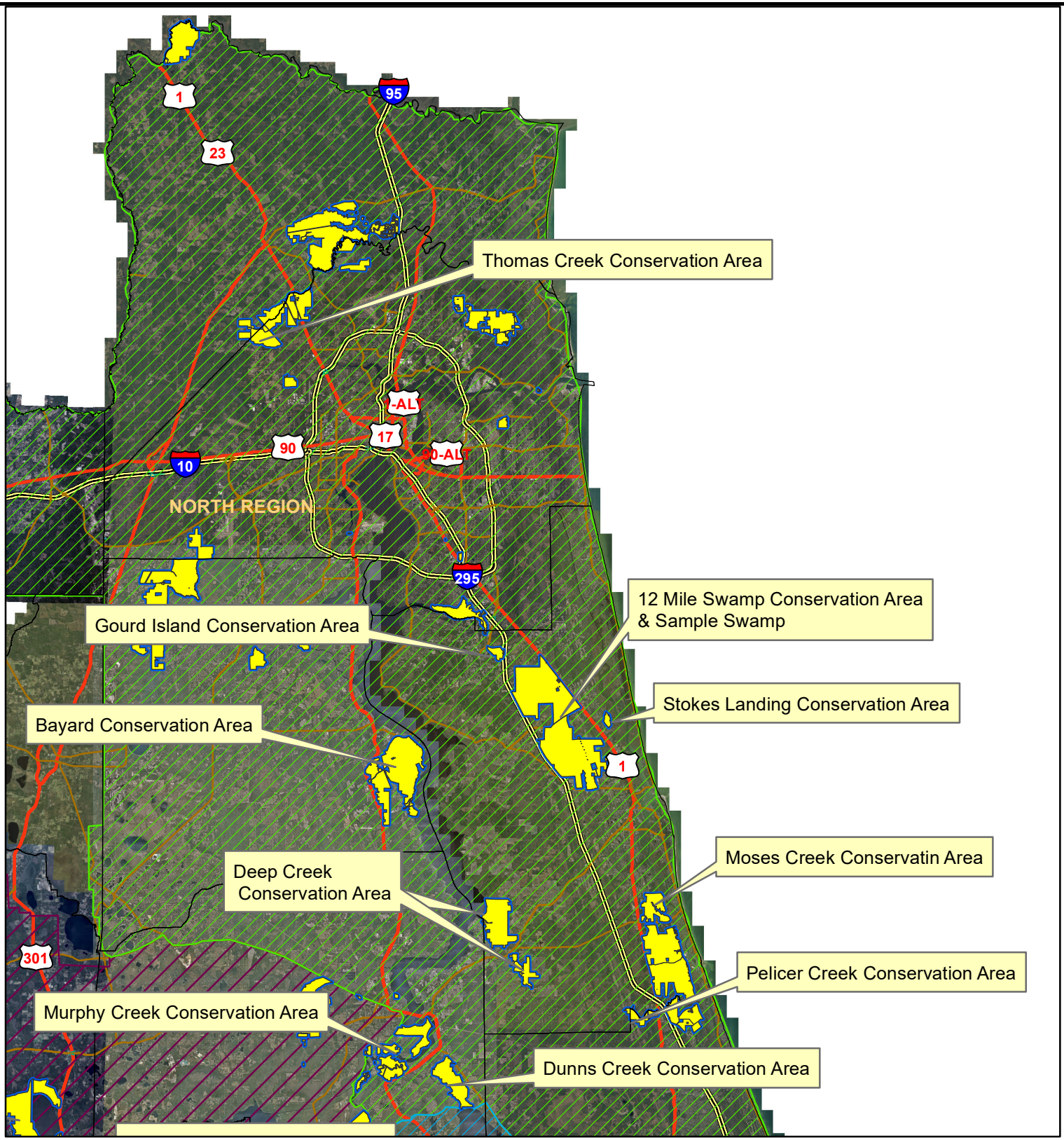
Emeralda Marsh Restoration Area

Large Machine Mowing

Levee/Roads	Mowing Type	Frequency	Width Range (feet)	Average Width (feet)	Length (miles)	Acres (Calculated)
Airstrip Levee	Standard	Modified Semi-Monthly	61 - 70 feet	65	0.50	3.90
Ashley Farms Rd	Standard	Modified Semi-Monthly	21 - 30 feet	25	0.60	1.90
Barnett Rd	Standard	Modified Semi-Monthly	21 - 30 feet	25	0.20	0.60
Bay Tree Rd	Standard	Modified Semi-Monthly	11 - 15 feet	15	0.40	0.70
Bell Hammock Rd	Standard	Modified Semi-Monthly	11 - 15 feet	15	0.20	0.40
Boat Ramp Rd	Standard	Modified Semi-Monthly	21 - 30 feet	25	0.60	1.80
Cabbage Hammock Rd 2	Standard	Modified Semi-Monthly	11 - 15 feet	25	0.10	0.30
Eustis Muck Farm Rd 1	Standard	Modified Semi-Monthly	21 - 30 feet	25	1.30	3.90
Eustis Muck Farm Rd 2	Standard	Modified Semi-Monthly	21 - 30 feet	25	0.10	0.30
Fishing Pier Rd	Standard	Modified Semi-Monthly	21 - 30 feet	25	0.10	0.30
Gator Rd	Standard	Modified Semi-Monthly	21 - 30 feet	25	0.20	0.60
Griffin Levee	Standard	Modified Semi-Monthly	21 - 30 feet	25	1.50	4.60
Haines Creek Levee 1	Standard	Modified Semi-Monthly	21 - 30 feet	25	0.60	1.80
Haines Creek Levee 2	Standard	Modified Semi-Monthly	21 - 30 feet	25	0.40	1.20
Lewis Rd	Standard	Modified Semi-Monthly	11 - 15 feet	15	0.60	1.10
Long Farm Rd	Standard	Modified Semi-Monthly	21 - 30 feet	25	1.80	5.50
Lowrie Brown Farm Rd 1	Standard	Modified Semi-Monthly	21 - 30 feet	25	0.30	0.90
Lowrie Brown Farm Rd 2	Standard	Modified Semi-Monthly	21 - 30 feet	25	0.10	0.30
Lowrie Brown Farm Rd 3	Standard	Modified Semi-Monthly	21 - 30 feet	25	0.40	1.20
Marsh Rd	Standard	Modified Semi-Monthly	11 - 15 feet	15	0.20	0.40
North-South Levee 1	Standard	Modified Semi-Monthly	21 - 30 feet	25	1.40	4.20
North-South Levee 2	Standard	Modified Semi-Monthly	21 - 30 feet	25	0.5	1.5
Patterson Rd 1	Standard	Modified Semi-Monthly	21 - 30 feet	25	0.3	0.9
Patterson Rd 2	Standard	Modified Semi-Monthly	21 - 30 feet	25	0.5	1.5
Paulhamus Rd 1	Standard	Modified Semi-Monthly	31 - 40 feet	33	0.3	1.2
Paulhamus Rd 4	Standard	Modified Semi-Monthly	21 - 30 feet	30	0.7	2.6
Powerline Rd 1	Standard	Modified Semi-Monthly	21 - 30 feet	30	0.3	1.1
Powerline Rd 2	Standard	Modified Semi-Monthly	21 - 30 feet	30	0.6	2.2
Powerline Rd 3	Standard	Modified Semi-Monthly	31 - 40 feet	30	0.5	1.8
Powerline Rd 4	Standard	Modified Semi-Monthly	21 - 30 feet	25	0.6	1.8
Powerline Rd 5	Standard	Modified Semi-Monthly	31 - 40 feet	30	0.3	1.1
Scrub Island Rd	Standard	Modified Semi-Monthly	11 - 15 feet	15	0.3	0.6
South Yale Levee	Standard	Modified Semi-Monthly	21 - 30 feet	25	0.3	0.9
Walker Ranch Rd 1	Standard	Modified Semi-Monthly	21 - 30 feet	25	0.3	0.9
Walker Ranch Rd 2	Standard	Modified Semi-Monthly	31 - 40 feet	30	1.3	4.7
Walker Ranch Rd 3	Standard	Modified Semi-Monthly	21 - 30 feet	25	0.7	2.1
Total Modified Monthly:						60.8
Total Semi-Annual:						0.00
Total Standard Mowing Acres:						60.8

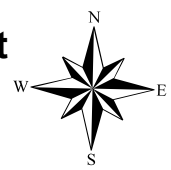
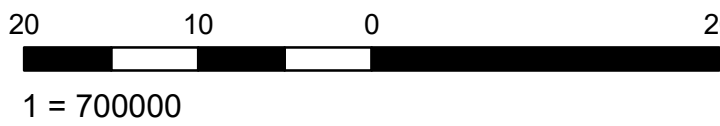
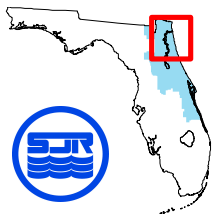
Lake Norris Conservation Area
Large Machine Mowing

Levee/Roads	Mowing Type	Frequency	Width Range (feet)	Average Width (feet)	Length (miles)	Acres (Calculated)
Blackwater Creek Rd 1	Standard	Modified Monthly	21 - 30	25	1.3	3.9
Blackwater Creek Rd 2	Standard	Modified Monthly	21 - 30	25	1.1	3.3
Blackwater Creek Rd 3	Standard	Modified Monthly	21 - 30	25	1.1	3.3
Blackwater Creek Rd 4	Standard	Modified Monthly	11 - 20	15	1.1	2.0
Canoe Launch Tram	Standard	Modified Monthly	11 - 20	15	0.1	0.2
Eustis Sand Mine Rd 1	Standard	Modified Monthly	21 - 30	24	2.3	6.7
Eustis Sand Mine Rd 2	Standard	Modified Monthly	21 - 30	25	0.5	1.5
Wiggins Rd	Standard	Modified Monthly	21 - 30	25	0.4	1.2
Total Modified Monthly:						22.1
Total Semi-Annual:						0.0
Total Standard Mowing Acres:						22.1



St Johns River Water Management District

North Region - Properties



20 Miles

<u>North Region Counties</u>
Duval
Clay
St Johns
Flagler

Bayard Conservation Area

Large Machine Mowing

Road Name	Mowing Type Standard /Levee	Frequency	Width Range (feet)	Average Width (feet)	Road Length (miles)	Acres (Calculated)
Borrow Pit Rd	Standard	Modified Monthly	11 - 15 feet	15	1.0	1.8
Cattail Creek Rd	Standard	Modified Monthly	11 - 15 feet	15	0.3	0.6
Cut Through Rd	Standard	Modified Monthly	31 - 40 feet	30	0.9	3.3
Davis Landing Rd	Standard	Modified Monthly	31 - 40 feet	35	1.6	6.8
Dove Field Loop	Standard	Modified Monthly	31 - 40 feet	35	0.8	3.4
Eagle Landing Rd	Standard	Modified Monthly	11 - 15 feet	15	0.6	1.1
Lindsey Lane	Standard	Modified Monthly	31 - 40 feet	35	2.0	8.5
Middle Rd 1	Standard	Modified Monthly	21 - 30 feet	25	0.5	1.5
Middle Rd 2	Standard	Modified Monthly	21 - 30 feet	25	1.1	3.3
Middle Rd 3	Standard	Modified Monthly	11 - 15 feet	15	1.1	2.0
Nels Honorarial Hwy West	Standard	Modified Monthly	21 - 30 feet	25	0.9	2.7
Pearls Trail North	Standard	Modified Monthly	31 - 40 feet	30	2.1	7.6
Pearls Trail South	Standard	Modified Monthly	21 - 30 feet	25	0.5	1.5
Peeler Br Rd	Standard	Modified Monthly	21 - 30 feet	25	0.6	1.8
Pole Barn Rd	Standard	Modified Monthly	21 - 30 feet	25	1.9	5.8
Road 10	Standard	Modified Monthly	21 - 30 feet	25	1.0	3.0
Road 20	Standard	Modified Monthly	15 - 25 feet	20	0.3	0.7
Road 21	Standard	Modified Monthly	11 - 15 feet	15	0.3	0.6
Road 3	Standard	Modified Monthly	11 - 15 feet	15	0.5	1.0
Road 39	Standard	Modified Monthly	21 - 30 feet	25	0.4	1.2
Road 4	Standard	Modified Monthly	11 - 15 feet	15	1.0	1.8
Road 45	Standard	Modified Monthly	11 - 15 feet	15	0.4	0.7
Road 47	Standard	Modified Monthly	11 - 15 feet	15	0.3	0.6
Road 5	Standard	Modified Monthly	11 - 15 feet	15	0.5	0.9
Road 50	Standard	Modified Monthly	21 - 30 feet	26	0.4	1.3
Road 51	Standard	Modified Monthly	21 - 30 feet	26	0.7	2.2
Road 52a	Standard	Modified Monthly	11 - 15 feet	15	0.2	0.4
Road 53	Standard	Modified Monthly	21 - 30 feet	25	0.5	1.5
Road 8	Standard	Modified Monthly	11 - 15 feet	15	0.7	1.3
Road 9	Standard	Modified Monthly	11 - 15 feet	15	1.7	3.1
Tower Loop	Standard	Modified Monthly	11 - 15 feet	15	0.6	1.1
Total Modified Monthly:						73.1
Total Semi-Annual:						0.0
Total Standard Mowing Acres:						73.1

Deep Creek Conservation Area - Lambert Parcel

Large Machine Mowing

Road Name	Mowing Type Standard /Levee	Frequency	Width Range (feet)	Average Width (feet)	Road Length (miles)	Acres (Calculated)
Road 1	Standard	Modified Monthly	11 - 15 feet	15.00	0.3	0.6
Road 2	Standard	Modified Monthly	21 - 30 feet	25.00	1.3	3.9
<i>Total Modified Monthly:</i>						4.5
<i>Total Semi-Annual:</i>						0.0
<i>Total Standard Mowing Acres:</i>						4.5

Deep Creek Conservation Area - Yarborough Parcel

Large Machine Mowing

Road Name	Mowing Type Standard /Levee	Frequency	Width Range (feet)	Average Width (feet)	Road Length (miles)	Acres (Calculated)
Road 10	Standard	Modified Monthly	21 - 30 feet	25.00	0.7	2.0
Road 19	Standard	Modified Monthly	21 - 30 feet	25.00	1.2	3.6
<i>Total Modified Monthly:</i>						5.6
<i>Total Semi-Annual:</i>						0.0
<i>Total Standard Mowing Acres:</i>						5.6

Dunns Creek Conservation Area

Large Machine Mowing

Road Name	Mowing Type Standard /Levee	Frequency	Width Range (feet)	Average Width (feet)	Road Length (miles)	Acres (Calculated)
Camp Rd	Standard	Modified Monthly	11 - 15 feet	15	0.4	0.7
Island Rd	Standard	Modified Monthly	21 - 30 feet	28	2.0	6.8
Road 3	Standard	Modified Monthly	11 - 15 feet	15	1.0	1.8
Road 4	Standard	Modified Monthly	11 - 15 feet	15	1.1	2.0
Tram Rd Segment 1	Standard	Modified Monthly	11 - 15 feet	15	0.3	0.6
Tram Rd Segment 2	Standard	Modified Monthly	15 - 25 feet	20	0.9	2.2
Tram Rd Segment 3	Standard	Modified Monthly	11 - 15 feet	15	1.1	2.0
Total Modified Monthly:						16.1
Total Semi-Annual:						0.0
Total Standard Mowing Acres:						16.1

Gourd Island Conservation Area

Large Machine Mowing

Road Name	Mowing Type Standard /Levee	Frequency	Width Range (feet)	Average Width (feet)	Road Length (miles)	Acres (Calculated)
Road 1	Standard	Modified Monthly	31 - 40 feet	45	1.3	7.1
Road 2	Standard	Modified Monthly	11 - 15 feet	15	0.2	0.4
Road 4	Standard	Modified Monthly	11 - 15 feet	15	1.9	3.5
Road 5	Standard	Modified Monthly	11 - 15 feet	15	0.3	0.5
Swamp Tram-1	Standard	Modified Monthly	21 - 30 feet	25	0.1	0.3
Total Modified Monthly:						11.8
Total Semi-Annual:						0.0
Total Standard Mowing Acres:						11.8

Moses Creek Conservation Area

Large Machine Mowing

Road Name	Mowing Type Standard /Levee	Frequency	Width Range (feet)	Average Width (feet)	Road Length (miles)	Acres (Calculated)
Bluff Rd	Standard	Modified Monthly	11 - 15 feet	15.00	0.20	0.4
Braddock Point Rd	Standard	Modified Monthly	11 - 15 feet	15.00	0.40	0.7
Hidden Creek Rd	Standard	Modified Monthly	21 - 30 feet	15.00	2.50	4.5
Morgan Trail 1	Standard	Modified Monthly	11 - 15 feet	15.00	1.20	2.2
Road 1	Standard	Modified Monthly	11 - 15 feet	15.00	0.20	0.4
Road 3	Standard	Modified Monthly	21 - 30 feet	15.00	0.30	0.5
Road 4	Standard	Modified Monthly	21 - 30 feet	25.00	0.59	1.8
Urban Interface	Standard	Semi-Annual	N/A	N/A	N/A	6.0
Total Modified Monthly:						10.5
Total Semi-Annual:						6.0
Total Standard Mowing Acres:						16.5

Pellicer Creek Area
Large Machine Mowing

Road Name	Mowing Type Standard /Levee	Frequency	Width Range (feet)	Average Width (feet)	Road Length (miles)	Acres (Calculated)
Road 1a	Standard	Modified Monthly	11 - 15 feet	15	0.4	0.7
Road 1b	Standard	Modified Monthly	11 - 15 feet	15	0.5	0.9
Road 2	Standard	Modified Monthly	11 - 15 feet	15	0.5	0.9
Road3	Standard	Modified Monthly	11 - 15 feet	15	0.9	1.6
Total Modified Monthly:						4.1
Total Semi-Annual:						0.0
Total Standard Mowing Acres:						4.1

Stokes Landing Area

Large Machine Mowing

Road Name	Mowing Type Standard /Levee	Frequency	Width Range (feet)	Average Width (feet)	Road Length (miles)	Acres (Calculated)
Hike Rd	Standard	Modified Monthly	11 - 15 feet	15	0.6	1.1
Loop Rd	Standard	Modified Monthly	11 - 15 feet	15	1.1	2.0
Pond Rd	Standard	Modified Monthly	11 - 15 feet	15	0.4	0.7
Total Modified Monthly:						3.8
Total Semi-Annual:						0.0
Total Standard Mowing Acres:						3.8

Twelve Mile Swamp

Large Machine Mowing

Road Name	Mowing Type Standard /Levee	Frequency	Width Range (feet)	Average Width (feet)	Road Length (miles)	Acres (Calculated)
Road 4 Sect 1	Standard	Modified Monthly	21 - 30 feet	25	0.6	1.8
Road 4 Sect 2	Standard	Modified Monthly	21 - 30 feet	25	0.1	0.3
Total Modified Monthly:						2.1
Total Semi-Annual:						0.0
Total Standard Mowing Acres:						2.1

Thomas Creek Conservation Area - Oglivie Parcel

Large Machine Mowing

Road Name	Mowing Type Standard /Levee	Frequency	Width Range (feet)	Average Width (feet)	Road Length (miles)	Acres (Calculated)
Road 1	Standard	Quarterly	11 - 15 feet	15	0.3	0.6
Major Loop Rd East 1	Standard	Quarterly	21 - 30 feet	25	1.2	3.6
Major Loop Rd East 2	Standard	Quarterly	21 - 30 feet	25	0.8	2.4
Major Loop Rd West	Standard	Quarterly	16 - 20 feet	20	0.7	1.7
Southern Boundary Rd	Standard	Quarterly	11 - 15 feet	15	0.3	0.6
Total Modified Monthly:						0.0
Total Quarterly:						8.9
Total Standard Mowing Acres:						8.9

Thomas Creek Conservation Area - Wright Parcel

Road Name	Mowing Type Standard /Levee	Frequency	Width Range (feet)	Average Width (feet)	Road Length (miles)	Acres (Calculated)
Wright Rd 2	Standard	Modified Monthly	21 - 30 feet	25	0.6	1.8
Wright Rd 4	Standard	Modified Monthly	11 - 15 feet	15	0.3	0.6
Wright Rd3	Standard	Modified Monthly	21 - 30 feet	22	0.7	1.9
Ethel Rd 1	Standard	Modified Monthly	11 - 15 feet	15	0.2	0.4
Ethel Rd 2	Standard	Modified Monthly	11 - 15 feet	15	0.4	0.7
Ethel Rd 3	Standard	Modified Monthly	11 - 15 feet	15	0.7	1.3
Canal Rd	Standard	Modified Monthly	16 - 20 feet	20	0.5	1.2
Total Modified Monthly:						7.9
Total Semi-Annual:						0.0
Total Standard Mowing Acres:						7.9

Thomas Creek Conservation Area - Red Shirt Parcel

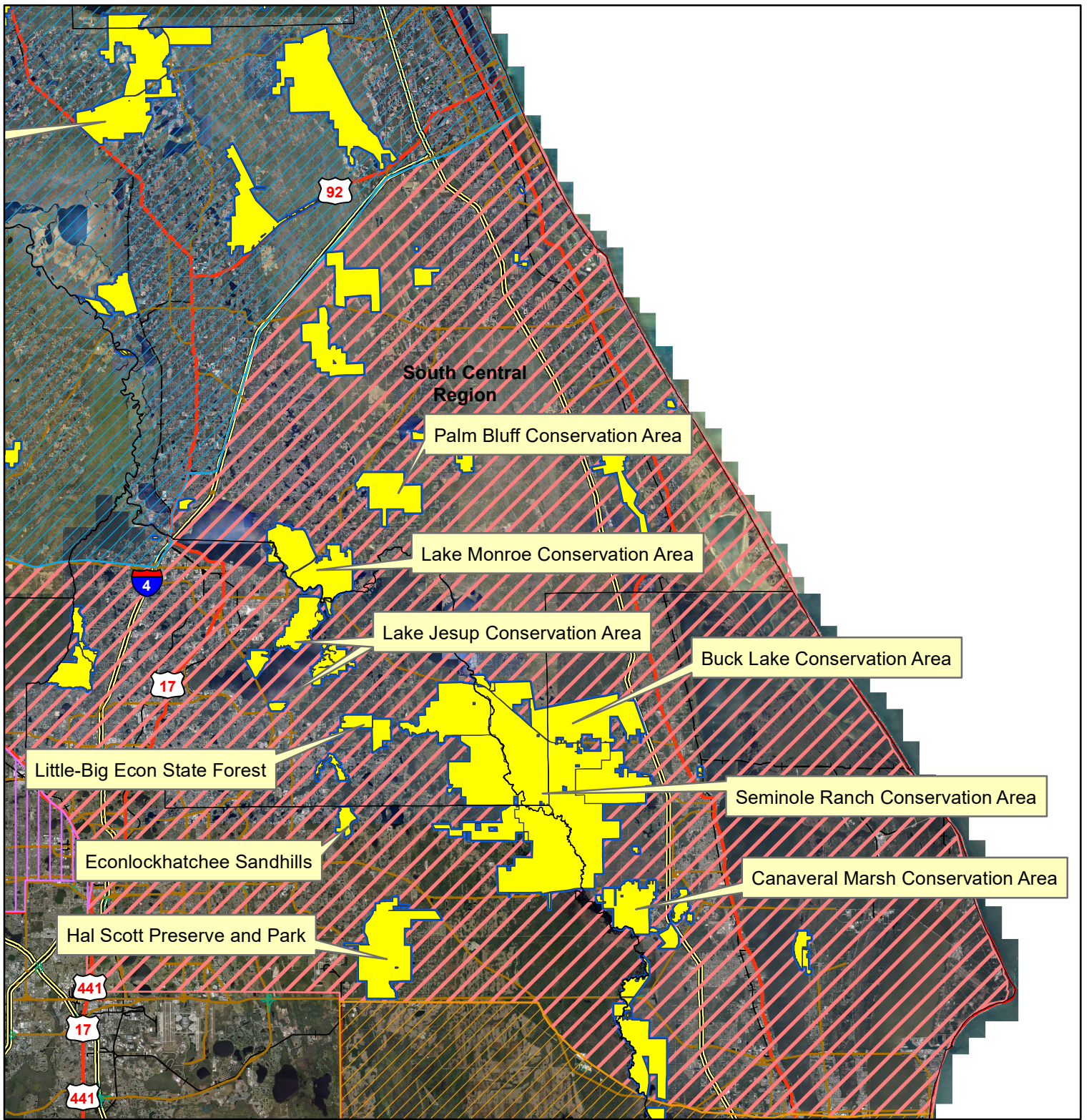
Road Name	Mowing Type Standard /Levee	Frequency	Width Range (feet)	Average Width (feet)	Road Length (miles)	Acres (Calculated)
Road 4	Standard	Semi-Annual	21 - 30 feet	22	0.3	0.8
Road 6	Standard	Semi-Annual	21 - 30 feet	21	0.2	0.5
Road 7	Standard	Semi-Annual	21 - 30 feet	25	1.1	3.3
Road 8	Standard	Semi-Annual	21 - 30 feet	22	0.4	1.1
Total Modified Monthly:						0.0
Total Semi-Annual:						5.7
Total Standard Mowing Acres:						5.7

North Region Mitigation Archipelego

(Sample Swamp Area)

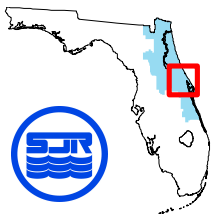
Large Machine Mowing

Road Name	Mowing Type Standard /Levee	Frequency	Width Range (feet)	Average Width (feet)	Road Length (miles)	Acres (Calculated)
Road 4 Sect1	Standard	Monthly	21 - 30 feet	23	0.9	2.5
Road 4 Sect2	Standard	Monthly	11 - 15 feet	15	0.4	0.7
Total Modified Monthly:						3.2
Total Semi-Annual:						0.0
Total Standard Mowing Acres:						3.2



St. Johns River Water Management District

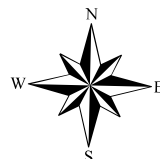
South Central Region - Properties



10 5 0 10 Miles



1 = 500000



South Central Region Counties

Brevard County

Orange County

Seminole County

Volusia County

Buck Lake
Large Machine Mowing

Levee/Roads	Mowing Type	Frequency	Width Range (feet)	Average Width (feet)	Length (miles)	Acres (Calculated)
Road 11	Standard	Modified Monthly	21 - 30	30	0.6	2.2
Road 2	Standard	Modified Monthly	11 - 15	15	0.4	0.7
T Grade 2	Standard	Modified Monthly	21 - 30	30	0.9	3.3
Kilbee Gap Ext	Standard	Modified Monthly	21 - 30	30	0.7	2.5
Fireline Rd	Standard	Modified Monthly	11 - 15	15	0.7	1.3
West Entrance Rd	Standard	Modified Monthly	21 - 30	30	1.0	3.6
West Lake Rd	Standard	Modified Monthly	21 - 30	30	1.3	4.7
Maple Island Rd	Standard	Modified Monthly	16 - 20	20	0.8	1.9
Kilbee Gap Rd North	Standard	Modified Monthly	21 - 30	30	0.3	1.1
Freezing Island Rd	Standard	Modified Monthly	21 - 30	30	1.6	5.8
Road 5	Standard	Modified Monthly	11 - 15	15	0.9	1.6
Old Timers Hwy	Standard	Modified Monthly	21 - 30	30	1.8	6.5
Road 6	Standard	Modified Monthly	21 - 30	24	0.8	2.3
Owen's Crossing 2	Standard	Modified Monthly	21 - 30	30	0.3	1.1
Kilbee Gap Rd	Standard	Modified Monthly	21 - 30	30	0.8	2.9
Road 4	Standard	Modified Monthly	21 - 30	30	0.5	1.8
Bird Tower Rd	Standard	Modified Monthly	21 - 30	30	0.5	1.8
Road 9	Standard	Modified Monthly	21 - 30	30	1.0	3.6
Road 7	Standard	Modified Monthly	11 - 15	15	0.6	1.1
T Grade 1	Standard	Modified Monthly	11 - 15	15	1.2	2.2
Boy Scout Camp Rd	Standard	Modified Monthly	21 - 30	22	0.7	1.9
Road 10	Standard	Modified Monthly	21 - 30	30	0.6	2.2
Cabbage Slough Powerline	Standard	Modified Monthly	21 - 30	30	1.5	5.5
Owen's Crossing 1	Standard	Modified Monthly	21 - 30	30	4.3	15.6
Red Gate	Standard	Modified Monthly	21 - 30	30	1.0	3.6
Scrub Loop Rd	Standard	Modified Monthly	11 - 15	15	1.6	2.9
Canal Rd	Standard	Modified Monthly	21 - 30	22	0.4	1.1
Road 8	Standard	Modified Monthly	11 - 15	15	0.2	0.4
Hog Valley Rd	Standard	Modified Monthly	21 - 30	22	0.9	2.4
Total Levee Acres:						0.0
Total Standard Acres:						87.6

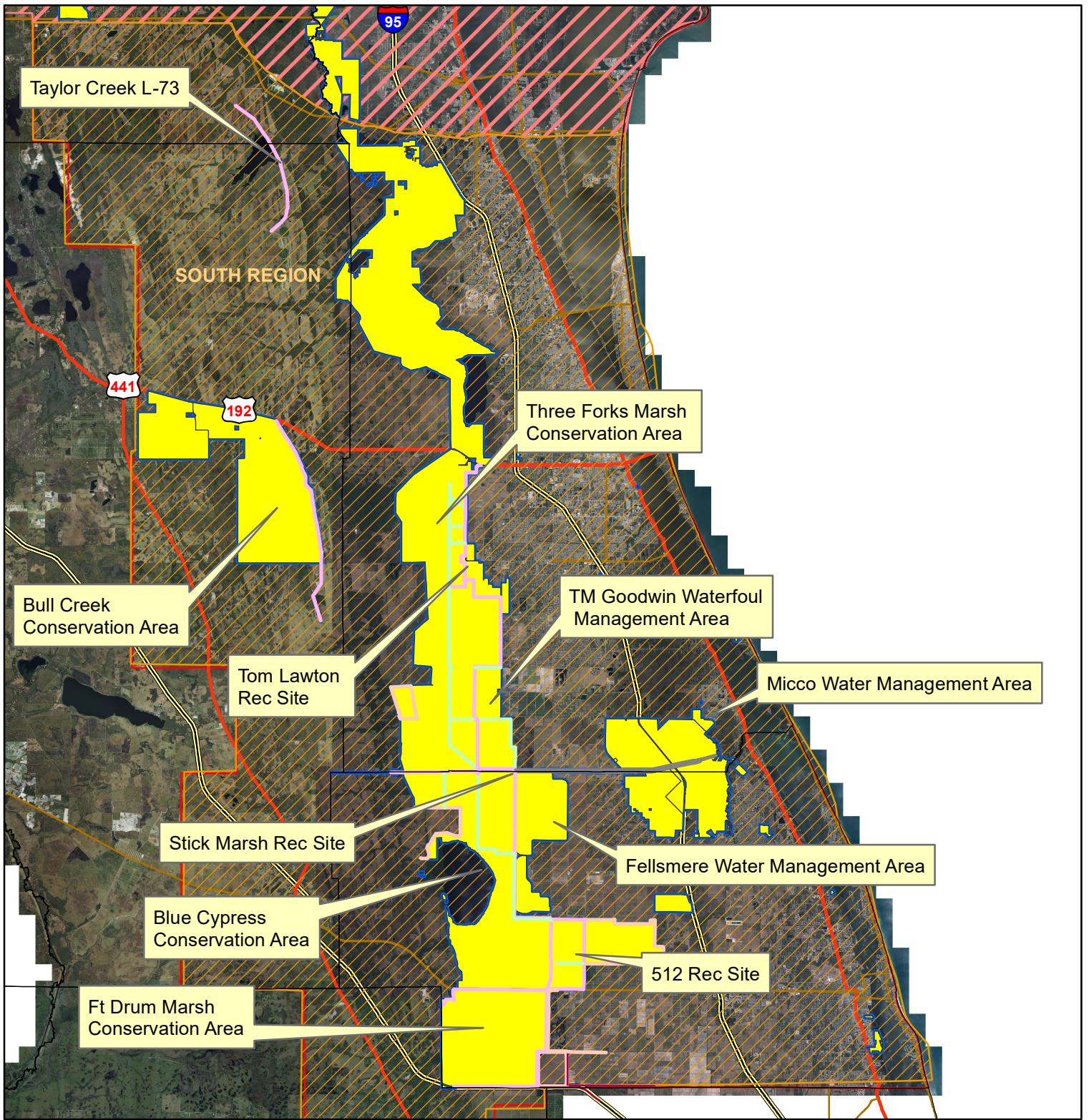
Palm Bluff

Large Machine Mowing

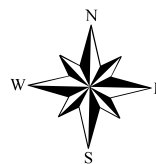
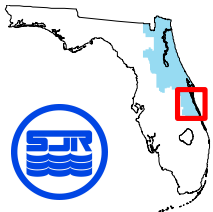
Levee/Roads	Mowing Type	Frequency	Width Range (feet)	Average Width (feet)	Length (miles)	Acres (Calculated)
Bridge Rd	Standard	Modified Monthly	16 - 20	18	2.2	4.8
Cabin Road	Standard	Modified Monthly	11 - 15	15	0.5	0.9
Deep Creek Crossing	Standard	Modified Monthly	11 - 15	15	0.9	1.6
Eastern Boundary Line	Standard	Modified Monthly	21 - 30	30	1.5	5.5
Main Entrance	Standard	Modified Monthly	21 - 30	24	0.5	1.5
Maytown Entrance	Standard	Modified Monthly	21 - 30	25	1.0	3.0
Office	Standard	Modified Monthly	21 - 30	22	0.9	2.4
Palm Cabin Rd	Standard	Modified Monthly	11 - 15	15	0.5	0.9
Powerline Rd	Standard	Modified Monthly	21 - 30	30	2.3	8.4
Road 1	Standard	Modified Monthly	11 - 15	15	0.5	0.9
Road 2	Standard	Modified Monthly	05 - 10	10	0.6	0.7
Road 3	Standard	Modified Monthly	11 - 15	15	0.8	1.5
Road 5	Standard	Modified Monthly	11 - 15	15	1.0	1.8
Road 6	Standard	Modified Monthly	11 - 15	15	1.5	2.7
South Fork	Standard	Modified Monthly	11 - 15	15	1.0	1.8
South Russel Road	Standard	Modified Monthly	21 - 30	30	2.3	8.4
North Russel Road	Standard	Modified Monthly	21 - 30	30	0.8	2.9
Southern Boundary Line	Standard	Modified Monthly	21 - 30	30	1.0	3.6
Tram Rd	Standard	Modified Monthly	11 - 15	15	0.7	1.3
Total Levee Acres:						0.0
Total Standard Acres:						54.6

Seminole Ranch
Large Machine Mowing

Levee/Roads	Mowing Type	Frequency	Width Range (feet)	Average Width (feet)	Length (miles)	Acres (Calculated)
Barrel	Standard	Modified Monthly	11 - 15	15	2.0	3.6
Baxter Point Rd N	Standard	Modified Monthly	11 - 15	15	0.3	0.5
Boar Rd	Standard	Modified Monthly	21 - 30	30	1.0	3.6
Doe Hammock Rd	Standard	Modified Monthly	21 - 30	30	1.4	5.1
Ellis Lake Rd	Standard	Modified Monthly	11 - 15	15	3.5	6.4
Hammock Trail Mound 1	Standard	Modified Monthly	11 - 15	15	1.4	2.5
Oak Mound Rd	Standard	Modified Monthly	21 - 30	22	1.3	3.5
Powerline Rd	Standard	Modified Monthly	11 - 15	15	1.1	2.0
Rifle Range Rd	Standard	Modified Monthly	11 - 15	15	0.9	1.6
Snake Creek Grade 1	Standard	Modified Monthly	11 - 15	15	0.8	1.5
Snake Creek Grade 2	Standard	Modified Monthly	11 - 15	15	0.8	1.5
South Lake Run	Standard	Modified Monthly	21 - 30	30	0.9	3.3
Switchgrass Rd.	Standard	Modified Monthly	21 - 30	30	1.4	5.1
Tomato Field Rd	Standard	Modified Monthly	21 - 30	30	1.1	4.0
Triangle Rd	Standard	Modified Monthly	21 - 30	30	1.0	3.6
Trouble Rd	Standard	Modified Monthly	21 - 30	30	0.9	3.3
Walker's Epressway North	Standard	Modified Monthly	11 - 15	15	2.8	5.1
Walker's Espressway South	Standard	Modified Monthly	11 - 15	15	2.8	5.1
Total Levee Acres:						0.0
Total Standard Acres:						61.3



St. Johns River Water Management District
South Region Counties



South Region Counties

- Orange County**
- Oceola County**
- Brevard County**
- Indian River County**

Taylor Creek

Large Machine Mowing

Levee/Roads	Mowing Type	Frequency	Width Range (feet)	Average Width (feet)	Length (miles)	Acres (Calculated)
L-73 Section 1	Levee	Modified Monthly	70-210	172	8.6	179.3
Total Levee Acres:						179.3
Total Standard Acres:						0.0

Bull Creek Conservation Area

Large Machine Mowing

Levee/Roads	Mowing Type	Frequency	Width Range (feet)	Average Width (feet)	Length (miles)	Acres (Calculated)
L-73 Section 2	Levee	Modified Monthly	105-280	153	12.4	230.0
Total Levee Acres:						230.0
Total Standard Acres:						0.0

Sawgrass Lake WMA

Large Machine Mowing

Levee/Roads	Mowing Type	Frequency	Width Range (feet)	Average Width (feet)	Length (miles)	Acres (Calculated)
L-74N Ext <i>(Sawgrass Lk)</i>	Levee	Modified Monthly	70-180	158	5.5	105.3
L- C1-North	Levee	Modified Monthly	110-127	116	1.0	14.1
L-40E	Levee	Modified Monthly	35-55	47	1.5	8.5
L-40W	Levee	Modified Monthly	40-65	51	4.5	27.8
Levee 2	Levee	Modified Monthly	10-20	20	1.0	2.4
Levee 3	Levee	Modified Monthly	25-50	40	1.5	7.3
Levee 4	Levee	Modified Monthly	15-30	25	1.0	3.0
Total Levee Acres:						168.4
Total Standard Acres:						0.0

Three Forks MCA
Large Machine Mowing

Levee/Roads	Mowing Type	Frequency	Width Range (feet)	Average Width (feet)	Length (miles)	Acres (Calculated)
L-40	Levee	Modified Monthly	50-65	63	11.5	87.8
L-40 Tieback	Levee	Modified Monthly	110-165	133	1.3	21.0
L-74N	Levee	Modified Monthly	50-170	94	17.5	199.3
Tom Lawton Entrance	Standard	Modified Monthly	25-40	30	1.0	3.6
Total Levee Acres:						308.1
Total Standard Acres:						3.6

Broadmoor MCA

Large Machine Mowing

Levee/Roads	Mowing Type	Frequency	Width Range (feet)	Average Width (feet)	Length (miles)	Acres (Calculated)
L-255 Broadmoor	Levee	Modified Monthly	16 - 20	20	1.5	3.6
L-256 Broadmoor	Levee	Modified Monthly	16 - 20	20	1.5	3.6
North-South Levee	Levee	Modified Monthly	21 - 30	30	1.4	5.1
Total Levee Acres:						12.3
Total Standard Acres:						0.0

TM Goodwin

Large Machine Mowing

Levee/Roads	Mowing Type	Frequency	Width Range (feet)	Average Width (feet)	Length (miles)	Acres (Calculated)
L-75N (C54RA)	Levee	Modified Monthly	41 - 50	41	5	24.8
Total Levee Acres:						24.8
Total Standard Acres:						0.0

C-54

Large Machine Mowing

Levee/Roads	Mowing Type	Frequency	Width Range (feet)	Average Width (feet)	Length (miles)	Acres (Calculated)
Roadside	Standard	Modified Monthly	50-250	119	22.4	323.1
Spoil Piles	Levee	Quarterly	110-175	132	9.0	144.0
Rework Site	Standard	Modified Monthly	N/A	N/A	N/A	12.0
Total Levee Acres:						144.0
Total Standard Acres:						335.1

Micco SWP
Large Machine Mowing

Levee/Roads	Map Page	Mowing Type	Frequency	Width Range (feet)	Average Width (feet)	Length (miles)	Acres (Calculated)
Micco	1	Standard	Modified Monthly	N/A	N/A	N/A	145.0
Total Levee Acres:							0.0
Total Standard Acres:							145.0

Fellsmere WMA
Large Machine Mowing

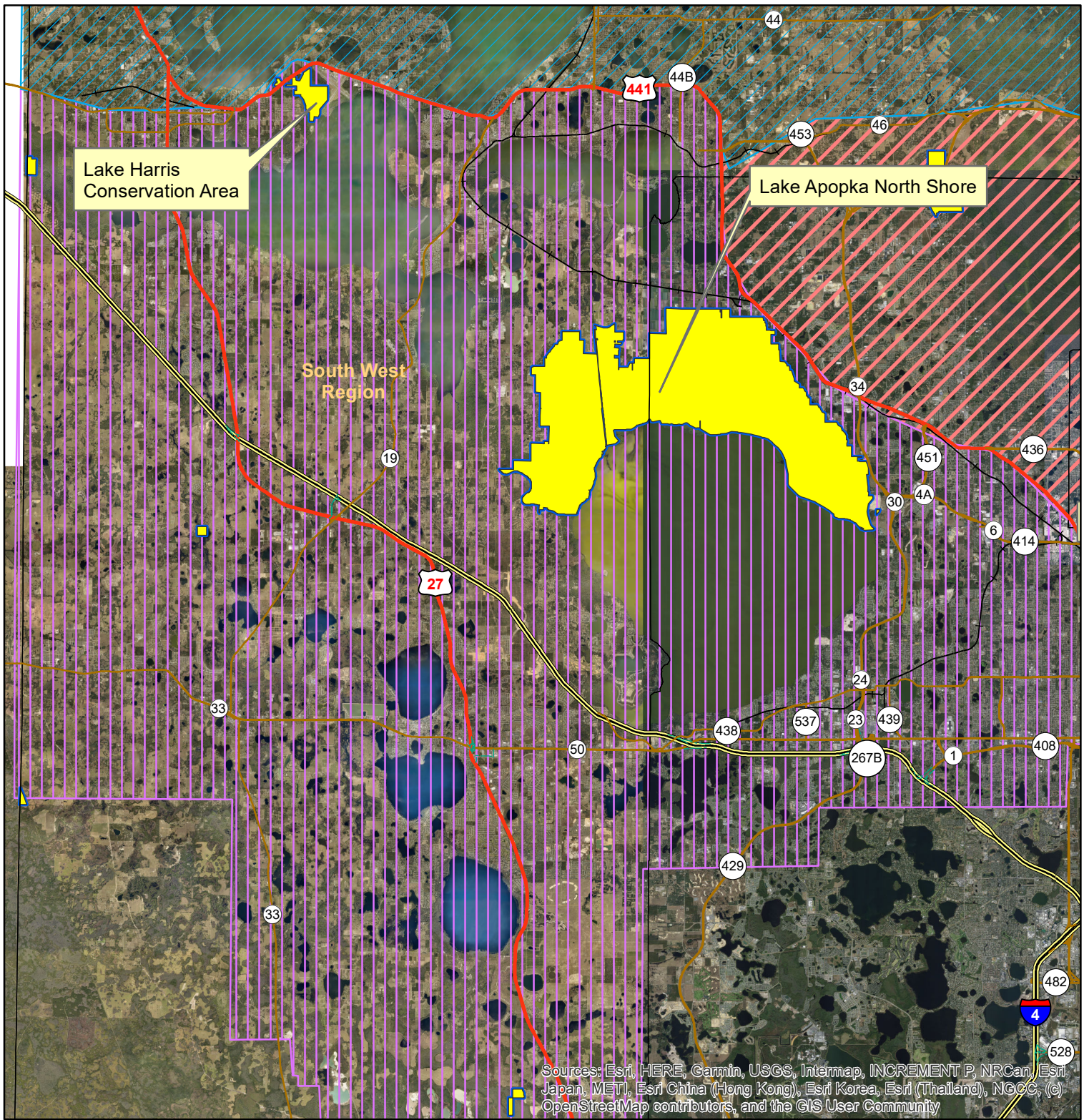
Levee/Roads	Mowing Type	Frequency	Width Range (feet)	Average Width (feet)	Length (miles)	Acres (Calculated)
Fellsmere North Levee	Levee	Modified Monthly	41 - 50	46	2.5	13.9
CRS-1 Entrance Rd	Levee	Modified Monthly	21 - 30	28	0.3	1.0
CRS-3 Entrance Rd	Levee	Modified Monthly	21 - 30	24	0.5	1.5
CRS-2 Entrance Rd	Levee	Modified Monthly	31 - 40	33	0.1	0.4
S-Canal Road	Levee	Modified Monthly	41 - 50	46	2.5	13.9
Fellsmere East Levee	Levee	Modified Monthly	100-200	145	12.5	219.7
Total Levee Acres:						250.4
Total Standard Acres:						0.0

Blue Cypress
Large Machine Mowing

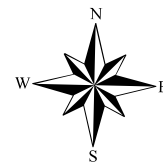
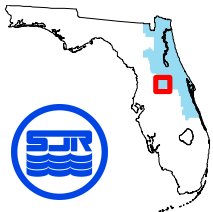
Levee/Roads	Mowing Type	Frequency	Width Range (feet)	Average Width (feet)	Length (miles)	Acres (Calculated)
Kenansville Lake Levee	Levee	Modified Monthly	21 - 30	30	2	7.3
L-251	Levee	Modified Monthly	21 - 30	25	1.1	3.3
L-512	Levee	Modified Monthly	21- 30	25	1.5	4.5
L-74E	Levee	Modified Monthly	60 - 130	102	2.2	27.2
L-74W	Levee	Modified Monthly	65 - 135	157	5	95.2
L-75	Levee	Modified Monthly	90 - 130	95	10.6	122.1
L-75 Farm Levee	Levee	Modified Monthly	30 - 40	45	0.4	2.2
L-76	Levee	Modified Monthly	20 - 30	25	12.6	38.2
L-77E	Levee	Modified Monthly	45 - 125	71	7.8	67.1
L-77W	Levee	Modified Monthly	90 - 150	112	4	54.3
Tucker Borrow Pit	Standard	Modified Monthly	-	-	-	7.0
S-96B Tieback	Levee	Modified Monthly	60 - 150	135	0.1	1.6
Total Levee Acres:						423.0
Total Standard Acres:						7.0

Fort Drum
Large Machine Mowing

Levee/Roads	Mowing Type	Frequency	Width Range (feet)	Average Width (feet)	Length (miles)	Acres (Calculated)
East West Rd	Standard	Modified Monthly	10 - 15	15	1.3	2.4
Ft. Drum Camp Rd	Standard	Modified Monthly	21 - 30	30	1.4	5.1
Ft. Drum Western Entrance	Standard	Modified Monthly	160-170	N/A	N/A	3.0
L-78	Levee	Modified Monthly	70 - 165	117	6.0	85.1
L-79	Levee	Modified Monthly	60 - 130	93	10.7	120.6
Piney Wood	Standard	Modified Monthly	21 - 30	23	1.6	4.5
Powerline Rd	Standard	Modified Monthly	11 - 15	15	3.0	5.5
Total Levee Acres:						205.7
Total Standard Acres:						20.5



St. Johns River Water Management District South West Retion - Properties



South West Region Counties

Lake County

Orange County

**Lake Apopka North Shore
Large Machine Mowing**

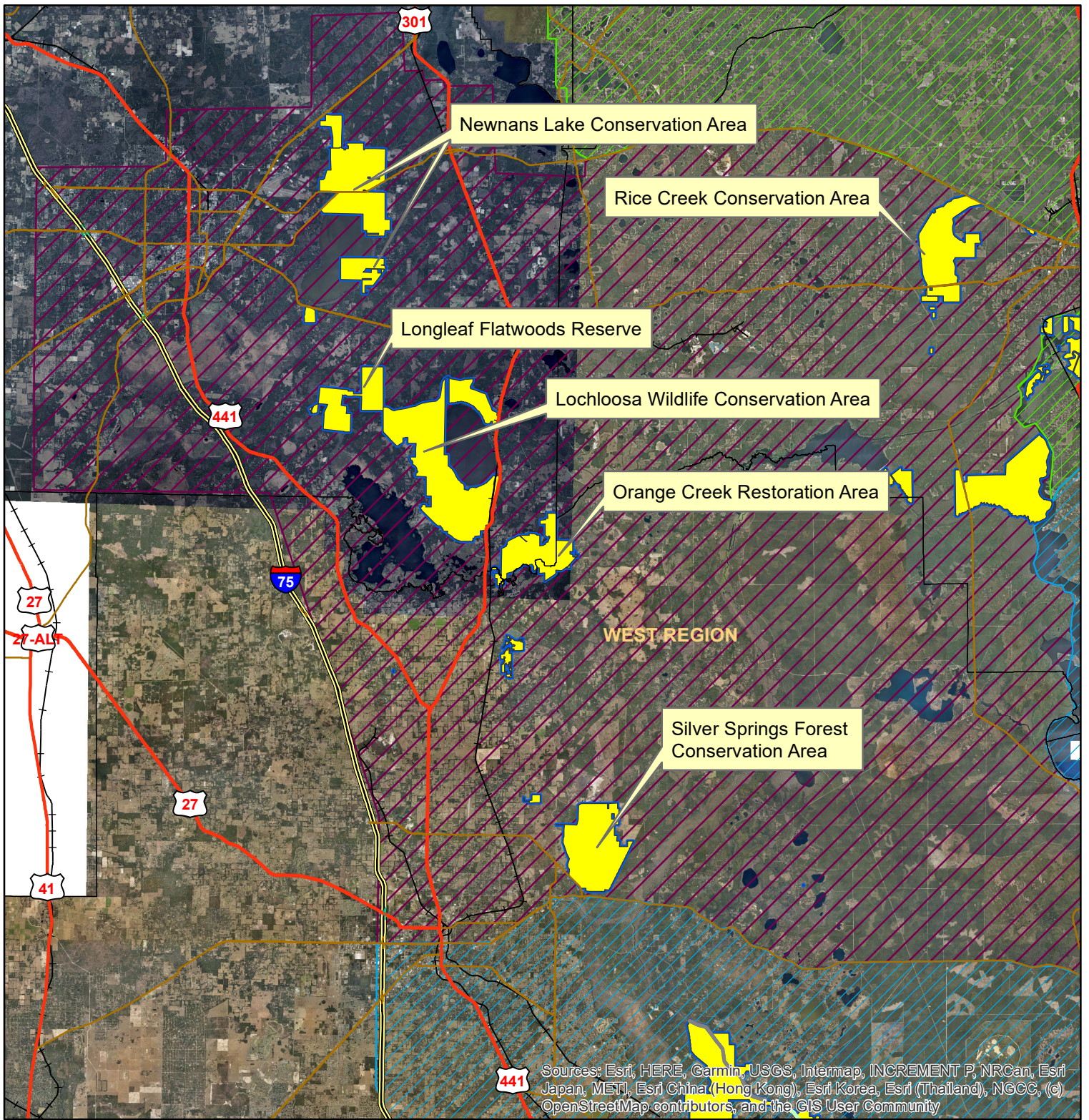
Levee/Roads	Mowing Type	Section	Frequency	Width Range (feet)	Average Width (feet)	Length (miles)	Acres (Calculated)
Access Rd	Standard	Duda	Modified Semi-Monthly	21 - 30 feet	30	0.9	3.3
Apopka Loop Trl	Standard	Duda	Modified Semi-Monthly	21 - 30 feet	30	2.4	8.7
Duda Maintenance Rd 1	Standard	Duda	Modified Semi-Monthly	21 - 30 feet	24	1.7	4.9
Duda Maintenance Rd 2	Standard	Duda	Modified Semi-Monthly	21 - 30 feet	30	0.8	2.9
Duda Maintenance Rd 3	Standard	Duda	Modified Semi-Monthly	21 - 30 feet	24	0.6	1.6
Duda Maintenance Rd 4	Standard	Duda	Modified Semi-Monthly	21 - 30 feet	24	0.9	2.6
Duda X-Over Pond Rd 1	Standard	Duda	Modified Semi-Monthly	21 - 30 feet	30	0.1	0.4
Duda X-Over Pond Rd 2	Standard	Duda	Modified Semi-Monthly	21 - 30 feet	30	0.1	0.4
Duda X-Over Pond Rd 3	Standard	Duda	Modified Semi-Monthly	21 - 30 feet	30	0.1	0.4
East/ West Rd (Marsh Rabbit Rd)	Standard	Duda	Modified Semi-Monthly	21 - 30 feet	24	2.8	8.1
Lake Level Canal Rd West	Standard	Duda	Modified Semi-Monthly	21 - 30 feet	30	1.4	5.1
McDonald Canal Maintenance Rd	Standard	Duda	Modified Semi-Monthly	21 - 30 feet	24	0.6	1.7
McDonald Canal Rd South	Standard	Duda	Modified Semi-Monthly	21 - 30 feet	30	2.9	10.5
East Beauclair	Standard	Duda	Modified Semi-Monthly	21 - 30 feet	30	2.2	8.0
North-South Rd	Standard	Duda	Modified Semi-Monthly	16 - 25 feet	20	1.4	3.4
Apopka Loop Trl Ext	Standard	Flow-way	Modified Semi-Monthly	21 - 30 feet	24	1.4	4.1
Clay Island Barn Rd	Standard	Flow-way	Modified Semi-Monthly	21 - 30 feet	30	1.0	3.6
Flow-Way East West Rd	Standard	Flow-way	Modified Semi-Monthly	41 - 50 feet	45	1.6	8.7
Hog Alley	Standard	Flow-way	Modified Semi-Monthly	21 - 30 feet	30	3.3	12.0
Hole in the Log Rd	Standard	Flow-way	Modified Semi-Monthly	21 - 30 feet	30	1.6	5.8
West of Beauclair	Standard	Duda	Modified Semi-Monthly	21 - 30 feet	30	3.4	12.4
Maintenance Rd 1	Standard	Flow-way	Modified Semi-Monthly	21 - 30 feet	24	0.9	2.6
Maintenance Rd 3	Standard	Flow-way	Modified Semi-Monthly	41 - 50 feet	45	1.2	6.5
Maintenance Rd 4	Standard	Flow-way	Modified Semi-Monthly	41 - 50 feet	45	1.2	6.5
Maintenance Rd 5	Standard	Flow-way	Modified Semi-Monthly	41 - 50 feet	45	1.1	6.0
Maintenance Rd 6	Standard	Flow-way	Modified Semi-Monthly	41 - 50 feet	45	1.3	7.0
Maintenance Rd 7	Standard	Flow-way	Modified Semi-Monthly	21 - 30 feet	30	1.3	4.7
Maintenance Rd 8	Standard	Flow-way	Modified Semi-Monthly	41 - 50 feet	45	1.4	7.6
Maintenance Rd 9	Standard	Flow-way	Modified Semi-Monthly	41 - 50 feet	45	0.3	1.6
Maintenance Rd 10	Standard	Flow-way	Modified Semi-Monthly	41 - 50 feet	45	0.1	0.6
Maintenance Rd 11	Standard	Flow-way	Modified Semi-Monthly	41 - 50 feet	45	1.9	10.4
Maintenance Road 12	Standard	Flow-way	Modified Semi-Monthly	21 - 30 feet	26	0.8	2.5
Ranch Rd	Standard	Flow-way	Modified Semi-Monthly	61 - 70 feet	65	2.3	18.1
Tree Hammock Rd	Standard	Flow-way	Modified Semi-Monthly	21 - 30 feet	30	0.4	1.5
Storm Water Park Rd	Standard	JonesRoad SWP	Modified Semi-Monthly	51 - 60 feet	60	1.2	8.7
Apopka Loop Trl	Standard	Zellwood	Modified Semi-Monthly	16 - 25 feet	20	6.6	16.0
Conrad Road	Standard	Zellwood	Modified Semi-Monthly	21 - 30 feet	30	1.0	3.6
Hooper Farm Rd	Standard	Zellwood	Modified Semi-Monthly	16 - 20 feet	20	1.3	3.2
Interceptor Rd	Standard	Zellwood	Modified Semi-Monthly	21 - 30 feet	30	1.5	5.5
Lake Level Canal Rd	Standard	Zellwood	Modified Semi-Monthly	41 - 50 feet	45	4.0	21.8
Laughlin Rd	Standard	Zellwood	Modified Semi-Monthly	16 - 20 feet	20	3.4	8.2
Laughlin Rd 2 N	Standard	Zellwood	Modified Semi-Monthly	21 - 30 feet	30	1.1	0.4
Laughlin Rd 2 S	Standard	Zellwood	Modified Semi-Monthly	21 - 30 feet	30	1.0	3.6
Lust Rd	Standard	Zellwood	Modified Semi-Monthly	16 - 25 feet	20	3.0	5.1
McDonald Canal Rd	Standard	Zellwood	Modified Semi-Monthly	51 - 60 feet	55	2.6	17.3
Potters Farm Rd	Standard	Zellwood	Modified Semi-Monthly	21 - 30 feet	25	1.5	4.5
Potters Farm Rd 2	Standard	Zellwood	Modified Semi-Monthly	21 - 30 feet	25	1.0	3.0
Roach Rd 1	Standard	Zellwood	Modified Semi-Monthly	16 - 25 feet	20	1.0	2.4
Roach Rd 2	Standard	Zellwood	Modified Semi-Monthly	21 - 30 feet	25	1.1	3.3
Shop Rd	Standard	Zellwood	Modified Semi-Monthly	21 - 30 feet	25	0.5	1.5
Welland Rd	Standard	Zellwood	Modified Semi-Monthly	16 - 25 feet	20	1.0	2.4
McDonald Canal Rd North	Standard	Sand Farm	Modified Semi-Monthly	21 - 30 feet	25	1.5	4.5
North Boundary Rd	Standard	Sand Farm	Modified Monthly	21 - 30 feet	30	1.5	5.6
North Boundary Rd	Standard	Sand Farm	Modified Monthly	21 - 30 feet	25	0.1	0.3
Sand Farm East Rd	Standard	Sand Farm	Modified Monthly	21 - 30 feet	25	1.1	3.3
Sand Farm East Rd Extension	Standard	Sand Farm	Modified Monthly	21 - 30 feet	25	0.6	1.8
Sand Farm Rd 1	Standard	Sand Farm	Modified Monthly	21 - 30 feet	25	1.6	4.8
Sand Farm Rd 2	Standard	Sand Farm	Modified Monthly	21 - 30 feet	25	0.5	1.5
Sand Farm Rd 3	Standard	Sand Farm	Modified Monthly	21 - 30 feet	25	0.2	0.6
Sand Farm Rd 4	Standard	Sand Farm	Modified Monthly	21 - 30 feet	25	0.8	2.4
Sand Farm Rd 5	Standard	Sand Farm	Modified Monthly	21 - 30 feet	25	0.7	2.1

**Lake Apopka North Shore
Large Machine Mowing**

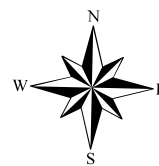
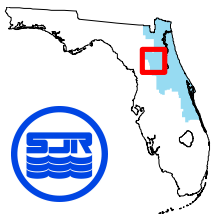
Levee/Roads	Mowing Type	Section	Frequency	Width Range (feet)	Average Width (feet)	Length (miles)	Acres (Calculated)
Sand Farm Rd 6	Standard	Sand Farm	Modified Monthly	21 - 30 feet	25	0.8	2.4
Sand Farm West	Standard	Sand Farm	Modified Monthly	21 - 30 feet	25	2.3	7.0
<i>Modified Semi-Monthly Large Machine Acres Total:</i>							294.7
<i>Modified Monthly Large Machine Acres Total:</i>							36.3
<i>Total Large Machine Acres:</i>							331.0

Lake Harris Bayou
Large Machine Mowing

Levee/Roads	Mowing Type	Frequency	Width Range (feet)	Average Width (feet)	Length (miles)	Acres (Calculated)
Access Easement	Standard	Modified Monthly	21 - 30 feet	25.00	0.8	2.4
Boat Ramp Rd	Standard	Modified Monthly	25 - 35 feet	30.00	0.2	0.7
Boat Ramp Field	Standard	Modified Monthly	N.A.	N.A.	N.A.	1.0
Canal Road	Standard	Modified Monthly	21 - 30 feet	30.00	0.3	1.1
Total Modified Monthly:						5.20



St Johns River Water Management District
West Region - Properties



West Region Counties

- Alachua County**
- Putnam County**
- Marion County**

Rice Creek Conservation Area

Large Machine Mowing

Levee/Roads	Mowing Type	Frequency	Width Range (feet)	Average Width (feet)	Length (miles)	Acres (Calculated)
Bay Rd	Standard	Modified Monthly	21 - 30 feet	22	0.1	0.3
Bolan Ramp Rd	Standard	Modified Monthly	21 - 30 feet	30	1.1	4.0
Boundary Rd	Standard	Modified Monthly	21 - 30 feet	22	1.1	2.9
Crayfish Rd	Standard	Modified Monthly	21 - 30 feet	24	1.3	3.8
Crayfish Tram	Standard	Modified Monthly	21 - 30 feet	20	0.3	0.7
Culvert Rd	Standard	Modified Monthly	21 - 30 feet	22	0.5	1.3
Fish Rd	Standard	Modified Monthly	21 - 30 feet	22	0.2	0.5
Green Tractor Rd	Standard	Modified Monthly	21 - 30 feet	22	0.5	1.3
Mud Rd	Standard	Modified Monthly	15 - 25 feet	20	0.3	0.7
Orange Tree Rd	Standard	Modified Monthly	21 - 30 feet	22	0.5	1.3
Pine Island Rd	Standard	Modified Monthly	15 - 25 feet	20	0.5	1.2
Pond Rd	Standard	Modified Monthly	21 - 30 feet	25	0.2	0.6
Sandy Rd	Standard	Modified Monthly	21 - 30 feet	25	0.4	1.2
Short Grade Rd	Standard	Modified Monthly	11 - 15 feet	15	0.4	0.7
Springside Rd	Standard	Modified Monthly	21 - 30 feet	24	1.2	3.5
Stub Rd	Standard	Modified Monthly	21 - 30 feet	25	0.4	1.2
Tram Road	Standard	Modified Monthly	15 - 25 feet	15	0.7	1.3
Tulip Tree Rd	Standard	Modified Monthly	21 - 30 feet	25	0.4	1.2
Turkey Rd	Standard	Modified Monthly	16 - 20 feet	20	0.4	1.0
UnNamed Rd 1	Standard	Modified Monthly	21 - 30 feet	22	0.1	0.3
UnNamed Rd 2	Standard	Modified Monthly	21 - 30 feet	22	0.1	0.3
UnNamed Rd 3	Standard	Modified Monthly	21 - 30 feet	22	0.2	0.5
UnNamed Rd 4	Standard	Modified Monthly	21 - 30 feet	22	0.2	0.5
West Rice Creek Rd	Standard	Modified Monthly	15 - 20 feet	20	0.5	1.2
Cedar Rd	Standard	Semi-Annual	15 - 20 feet	15	0.3	0.5
Gas Line Rd	Standard	Semi-Annual	15 - 20 feet	15	0.4	0.7
No Name Rd	Standard	Semi-Annual	15 - 20 feet	15	1.0	1.8
South Boundary Rd	Standard	Semi-Annual	15 - 20 feet	15	0.2	0.4
Total Modified Monthly:						31.5
Total Semi-Annual:						3.4

Total Large Machine Acres: 34.9

Newnans Lake Conservation Area

Large Machine Mowing

Levee/Roads	Mowing Type	Frequency	Width Range (feet)	Average Width (feet)	Length (miles)	Acres (Calculated)
7 Point Rd	Standard	Modified Monthly	21 - 30 feet	25	0.5	1.5
Boundary Rd 1	Standard	Modified Monthly	21 - 30 feet	24	0.5	1.5
Boundary Rd 2	Standard	Modified Monthly	21 - 30 feet	24	1.1	3.2
Break Rd	Standard	Modified Monthly	11 - 15 feet	15	0.5	0.9
Camp Rd West	Standard	Modified Monthly	11 - 15 feet	15	0.2	0.4
Cemetery Rd	Standard	Modified Monthly	11 - 15 feet	15	0.2	0.4
Center Rd	Standard	Modified Monthly	21 - 30 feet	27	1.1	3.6
Connector Rd	Standard	Modified Monthly	11 - 15 feet	15	0.2	0.4
Cowpen Rd	Standard	Modified Monthly	21 - 30 feet	25	0.4	1.2
Creek Rd	Standard	Modified Monthly	11 - 15 feet	15	0.1	0.2
Duck Pond	Standard	Modified Monthly	11 - 15 feet	15	0.7	1.3
Main Gate	Standard	Modified Monthly	15 - 20 feet	17	0.1	0.2
Newnans Grade	Standard	Modified Monthly	31 - 40 feet	35	2.1	8.9
North Rd	Standard	Modified Monthly	11 - 15 feet	15	0.8	1.5
North Rd 1	Standard	Modified Monthly	21 - 30 feet	26	0.6	1.9
North Rd 2	Standard	Modified Monthly	15 - 20 feet	20	0.2	0.5
North Rd 3	Standard	Modified Monthly	21 - 30 feet	22	0.6	1.6
North Rd 4	Standard	Modified Monthly	21 - 30 feet	22	0.9	2.4
North Rd 5	Standard	Modified Monthly	21 - 30 feet	25	0.2	0.6
North Rd 6	Standard	Modified Monthly	21 - 30 feet	25	0.1	0.3
Old Gainesville Rd 1	Standard	Modified Monthly	21 - 30 feet	24	0.3	0.9
Old Gainesville Rd 2	Standard	Modified Monthly	15 - 20 feet	20	0.7	1.7
South Camp Rd 1	Standard	Modified Monthly	11 - 15 feet	15	0.4	0.7
South Camp Rd 2	Standard	Modified Monthly	11 - 15 feet	15	0.3	0.5
South Camp Rd 3	Standard	Modified Monthly	21 - 30 feet	25	0.4	1.2
South Rd 10	Standard	Modified Monthly	21 - 30 feet	25	0.2	0.6
South Rd 11	Standard	Modified Monthly	11 - 15 feet	15	0.6	1.1
South Rd 12	Standard	Modified Monthly	11 - 15 feet	15	0.5	0.9
South Rd 13	Standard	Modified Monthly	11 - 15 feet	15	1.0	1.8
South Rd 14	Standard	Modified Monthly	11 - 15 feet	15	0.7	1.3
South Rd 15	Standard	Modified Monthly	11 - 15 feet	15	0.3	0.5
South Rd 16	Standard	Modified Monthly	11 - 15 feet	15	0.5	0.9
South Rd 17	Standard	Modified Monthly	11 - 15 feet	15	0.2	0.4
South Rd 18	Standard	Modified Monthly	11 - 15 feet	15	0.3	0.5
South Rd 19	Standard	Modified Monthly	11 - 15 feet	15	0.2	0.4
South Rd 20	Standard	Modified Monthly	11 - 15 feet	15	0.4	0.7
South Rd 3	Standard	Modified Monthly	11 - 15 feet	15	0.3	0.5
South Rd 4	Standard	Modified Monthly	11 - 15 feet	15	0.3	0.5
South Rd 5	Standard	Modified Monthly	21 - 30 feet	24	0.9	2.6
South Rd 6	Standard	Modified Monthly	21 - 30 feet	25	0.3	0.9
South Rd 7	Standard	Modified Monthly	15 - 20 feet	15	0.3	0.5

Newnans Lake Conservation Area

Large Machine Mowing

Levee/Roads	Mowing Type	Frequency	Width Range (feet)	Average Width (feet)	Length (miles)	Acres (Calculated)
South Rd 8	Standard	Modified Monthly	11 - 15 feet	15	0.8	1.5
South Rd 9	Standard	Modified Monthly	11 - 15 feet	15	0.4	0.7
Swamp Loop	Standard	Modified Monthly	21 - 30 feet	30	1.3	4.7
Sweetheart Grade 1	Standard	Modified Monthly	21 - 30 feet	25	0.6	1.8
Thinnings Grade	Standard	Modified Monthly	21 - 30 feet	26	0.5	1.6
Two-Bridge Rd	Standard	Modified Monthly	21 - 30 feet	23	1.4	3.9
West Rd 1	Standard	Modified Monthly	11 - 15 feet	15	0.4	0.7
West Rd 2	Standard	Modified Monthly	21 - 30 feet	25	1.5	4.5
West Rd 3	Standard	Modified Monthly	21 - 30 feet	24	0.1	0.3
Total Modified Monthly:						71.3
Total Semi-Annual:						0.0

Total Large Machine Acres: 71.3

**Longleaf Flatwoods
Large Machine Mowing**

Levee/Roads	Mowing Type	Frequency	Width Range (feet)	Average Width (feet)	Length (miles)	Acres (Calculated)
Camp Rd 1	Standard	Modified Monthly	21 - 30 feet	25	0.4	1.2
Camp Rd 2	Standard	Modified Monthly	11 - 15 feet	15	0.2	0.4
Camps Canal Grade	Standard	Modified Monthly	21 - 30 feet	25	0.6	1.8
Railroad Grade	Standard	Modified Monthly	21 - 30 feet	21	1.3	3.3
River Styx Grade 1	Standard	Modified Monthly	21 - 30 feet	25	0.3	0.9
River Styx Grade 2	Standard	Modified Monthly	21 - 30 feet	25	0.4	1.2
River Styx Grade 3	Standard	Modified Monthly	31 - 40 feet	35	0.9	3.8
River Styx Grade 4	Standard	Modified Monthly	21 - 30 feet	25	0.5	1.5
River Styx Grade 5	Standard	Modified Monthly	21 - 30 feet	25	2.1	6.4
Road 1	Standard	Modified Monthly	11 - 15 feet	15	1.2	2.2
Road 2	Standard	Modified Monthly	11 - 15 feet	15	0.8	1.5
Road 3	Standard	Modified Monthly	11 - 15 feet	15	0.6	1.1
Road 5	Standard	Modified Monthly	11 - 15 feet	15	0.5	0.9
Road 7	Standard	Modified Monthly	11 - 15 feet	15	0.7	1.3
Road 8	Standard	Modified Monthly	21 - 30 feet	21	0.4	1.0
Road 9	Standard	Modified Monthly	11 - 15 feet	15	0.7	1.3
Road 13	Standard	Modified Monthly	11 - 15 feet	15	0.7	1.3
Well Grade	Standard	Modified Monthly	21 - 30 feet	25	0.3	0.9
Road 10	Standard	Semi-Annual	11 - 15 feet	15	0.5	0.9
Road 11	Standard	Semi-Annual	11 - 15 feet	15	0.2	0.4
Road 12	Standard	Semi-Annual	11 - 15 feet	15	0.4	0.7
Road 6	Standard	Semi-Annual	11 - 15 feet	15	1	1.8
Total Modified Monthly:						32.0
Total Semi-Annual:						3.8

Total Large Machine Acres: 35.8

Lochloosa Conservation Area
Large Machine Mowing

Levee/Roads	Mowing Type	Frequency	Width Range (feet)	Average Width (feet)	Length (miles)	Acres (Calculated)
Airboat Rd	Standard	Modified Monthly	31 - 40 feet	30	0.6	2.2
Burnt Island Rd	Standard	Modified Monthly	21 - 30 feet	25	2.4	7.3
Burnt Island Rd 2	Standard	Modified Monthly	21 - 30 feet	25	0.4	1.2
Cooter Bob Rd	Standard	Modified Monthly	31 - 40 feet	32	1.7	6.6
Dead Cow Rd	Standard	Modified Monthly	21 - 30 feet	25	0.7	2.1
Dozer Rd	Standard	Modified Monthly	21 - 30 feet	25	0.3	0.9
Fence Line Rd	Standard	Modified Monthly	16 - 20 feet	20	1.9	4.6
Lake Rd	Standard	Modified Monthly	21 - 30 feet	30	0.3	1.1
Marsh Point Rd	Standard	Modified Monthly	21 - 30 feet	25	0.4	1.2
Marsh Rd	Standard	Modified Monthly	21 - 30 feet	30	1.2	4.4
Platform Rd	Standard	Modified Monthly	21 - 30 feet	30	0.5	1.8
Sandy Rd	Standard	Modified Monthly	16 - 20 feet	20	0.3	0.7
1st Rd	Standard	Semi-Annual	11 - 15 feet	15	1.1	2.0
Bay Pond Rd	Standard	Semi-Annual	11 - 15 feet	15	0.4	0.7
Burnt Island Loop 1	Standard	Semi-Annual	21 - 30 feet	24	1.4	4.1
Burnt Island Loop 2	Standard	Semi-Annual	21 - 30 feet	24	0.8	2.3
Cut Down Rd	Standard	Semi-Annual	11 - 15 feet	15	0.4	0.7
Cut Through Rd 1	Standard	Semi-Annual	11 - 15 feet	15	0.4	0.7
Cut Through Rd 2	Standard	Semi-Annual	11 - 15 feet	15	0.4	0.7
Honey Hole Rd	Standard	Semi-Annual	16 - 20 feet	20	0.4	1.0
Rut Tree Rd	Standard	Semi-Annual	11 - 15 feet	15	0.6	1.1
Total Modified Monthly:						34.1
Total Semi-Annual:						13.3

Total Large Machine Acres: 47.4

Orange Creek Restoration Area

Large Machine Mowing

Levee/Roads	Mowing Type	Frequency	Width Range (feet)	Average Width (feet)	Length (miles)	Acres (Calculated)
Camp Rd	Standard	Modified Monthly	21 - 30 feet	25	0.1	0.3
Citra Ranch Rd 1	Standard	Modified Monthly	21 - 30 feet	28	0.9	3.1
Citra Ranch Rd 2	Standard	Modified Monthly	21 - 30 feet	25	0.3	0.9
Clara Boyles Rd 1	Standard	Modified Monthly	15 - 25 feet	17	0.3	0.6
Clara Boyles Rd 2	Standard	Modified Monthly	21 - 30 feet	25	0.3	0.9
Clara Boyles Rd 3	Standard	Modified Monthly	11 - 15 feet	15	0.2	0.4
Doc Parramore Rd	Standard	Modified Monthly	11 - 15 feet	15	0.3	0.5
Ergle Farm Rd	Standard	Modified Monthly	21 - 30 feet	25	0.4	1.2
Lochloosa Circle	Standard	Modified Monthly	11 - 15 feet	15	0.9	1.6
Marsh Edge Rd	Standard	Modified Monthly	11 - 15 feet	15	0.7	1.3
Marsh Rd	Standard	Modified Monthly	15 - 25 feet	20	0.2	0.5
Middle Bridge Rd	Standard	Modified Monthly	21 - 30 feet	25	0.5	1.5
Miller Farm Rd	Standard	Modified Monthly	21 - 30 feet	25	0.6	1.8
Needmore Rd	Standard	Modified Monthly	21 - 30 feet	25	0.7	2.1
Pinner Farm Rd	Standard	Modified Monthly	21 - 30 feet	25	0.8	2.4
Pump House Rd	Standard	Modified Monthly	15 - 25 feet	22	0.2	0.5
Sam Sykes Rd	Standard	Modified Monthly	21 - 30 feet	25	0.1	0.3
Shands Hammock Rd	Standard	Modified Monthly	21 - 30 feet	25	0.8	2.4
Shands Trl	Standard	Modified Monthly	21 - 30 feet	25	0.7	2.1
Sykes Cemetery Rd	Standard	Modified Monthly	15 - 25 feet	20	0.6	1.5
Tar Box Island Rd 1	Standard	Modified Monthly	11 - 15 feet	15	0.5	0.9
Tar Box Island Rd 2	Standard	Modified Monthly	21 - 30 feet	25	0.7	2.1
Tar Box Island Rd 3	Standard	Modified Monthly	21 - 30 feet	25	0.2	0.6
Windmill Rd	Standard	Modified Monthly	21 - 30 feet	25	1.3	3.9
Total Modified Monthly:						33.4
Total Semi-Annual:						0.0

Total Large Machine Acres: 33.4

Silver Springs Forest Area
Large Machine Mowing

Levee/Roads	Mowing Type	Frequency	Width Range (feet)	Average Width (feet)	Length (miles)	Acres (Calculated)
North/South Rd 1	Standard	Modified Monthly	21 - 30 feet	28	1.2	4.1
North/South Rd 2	Standard	Modified Monthly	21 - 30 feet	24	1.6	4.7
UnNamed Rd 1	Standard	Modified Monthly	16 - 20 feet	18	0.5	1.1
UnNamed Rd 2	Standard	Modified Monthly	21 - 30 feet	24	0.7	2.0
UnNamed Rd 3	Standard	Modified Monthly	21 - 30 feet	25	0.5	1.5
UnNamed Rd 4	Standard	Modified Monthly	16 - 20 feet	20	1.1	2.7
UnNamed Rd 5	Standard	Modified Monthly	16 - 20 feet	20	1.6	3.9
UnNamed Rd 6	Standard	Modified Monthly	16 - 20 feet	18	0.9	2
UnNamed Rd 7	Standard	Modified Monthly	21 - 30 feet	28	1.6	5.4
UnNamed Rd 8	Standard	Modified Monthly	21 - 30 feet	22	1.0	2.7
UnNamed Rd 9	Standard	Modified Monthly	11 - 15 feet	15	0.4	0.7
UnNamed Rd 10	Standard	Modified Monthly	21 - 30 feet	25	0.4	1.2
UnNamed Rd 11	Standard	Modified Monthly	21 - 30 feet	22	1.0	2.7
UnNamed Rd 12	Standard	Modified Monthly	21 - 30 feet	22	0.1	0.3
UnNamed Rd 13	Standard	Modified Monthly	21 - 30 feet	26	1.1	3.5
UnNamed Rd 14	Standard	Modified Monthly	16 - 20 feet	18	0.5	1.1
UnNamed Rd 15	Standard	Modified Monthly	16 - 20 feet	20	0.8	1.9
UnNamed Rd 16	Standard	Modified Monthly	21 - 30 feet	22	0.8	2.1
UnNamed Rd 17	Standard	Modified Monthly	21 - 30 feet	24	0.6	1.7
UnNamed Rd 18	Standard	Modified Monthly	21 - 30 feet	24	0.6	1.7
UnNamed Rd 19	Standard	Modified Monthly	21 - 30 feet	25	0.6	1.8
UnNamed Rd 20	Standard	Modified Monthly	21 - 30 feet	28	2.4	8.1
UnNamed Rd 21	Standard	Modified Monthly	21 - 30 feet	22	1.9	5.1
UnNamed Rd 22	Standard	Modified Monthly	16 - 20 feet	18	0.9	2.0
UnNamed Rd 23	Standard	Modified Monthly	21 - 30 feet	24	1.2	3.5
UnNamed Rd 24	Standard	Modified Monthly	21 - 30 feet	30	0.4	1.5
UnNamed Road 25	Standard	Modified Monthly	11 - 15 feet	15	0.6	1.1
UnNamed Rd 26	Standard	Modified Monthly	21 - 30 feet	24	0.3	0.9
Total Modified Monthly:						71.0
Total Semi-Annual:						0.0

Total Large Machine Acres: 71.0