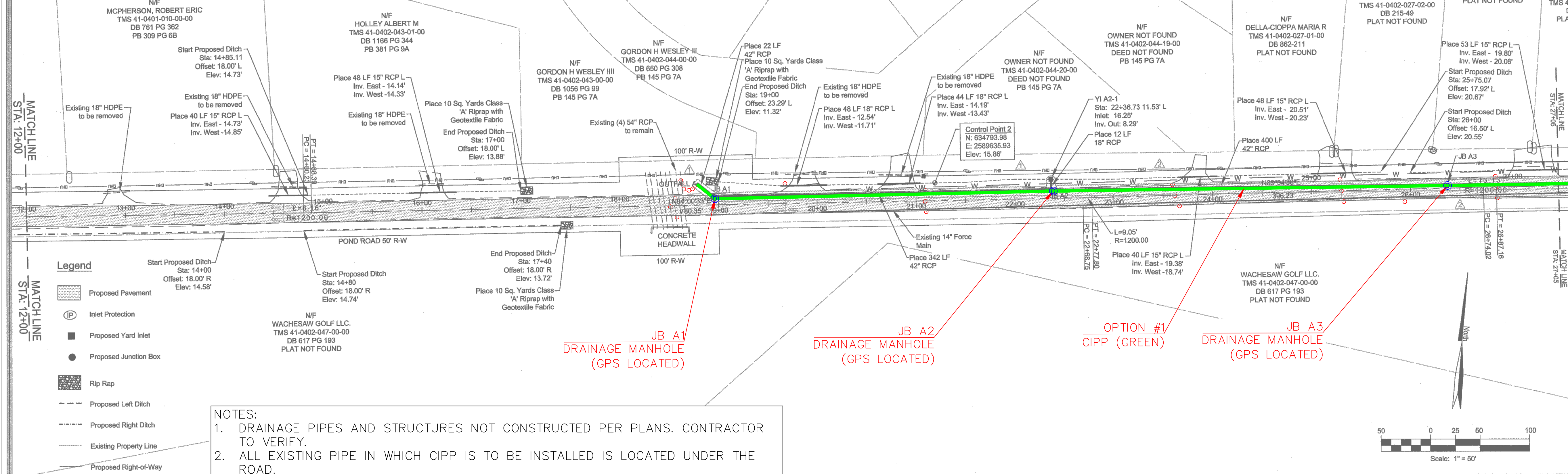
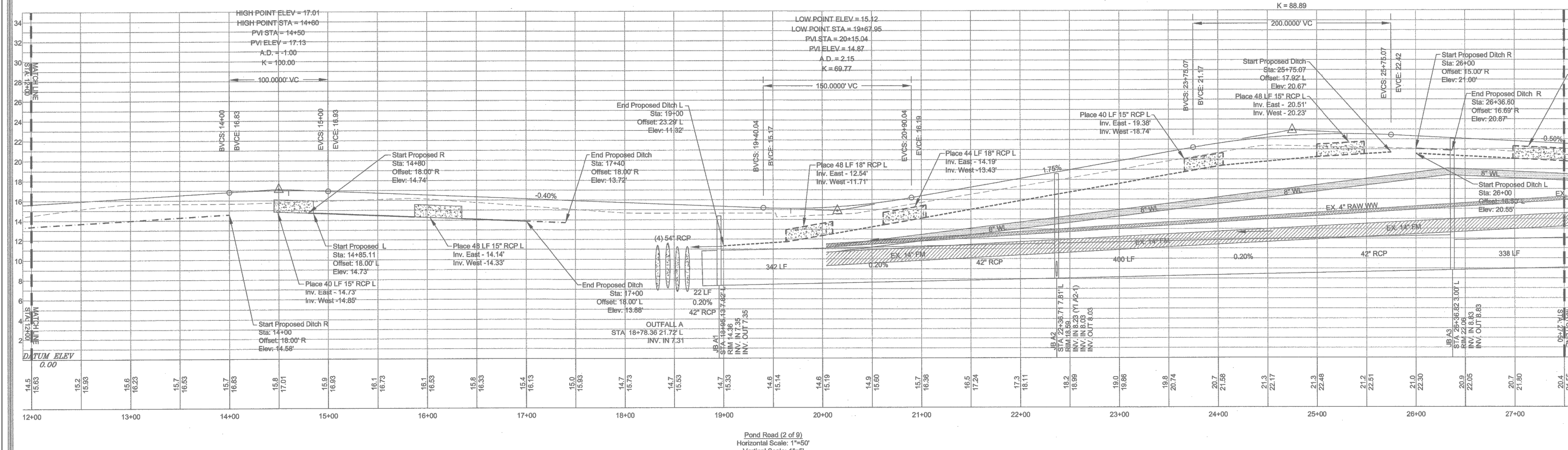


References:
 1. Reference is made to a topographic survey completed by Dennis Corporation personnel for Georgetown County May 2008
 2. Vertical Datum is NAVD 88
 3. Horizontal Datum is NAD '83 (2007)
 4. All subsurface utility locations are approximate and contractor shall field verify locations.



- Legend**
- Proposed Pavement
 - Inlet Protection
 - Proposed Yard Inlet
 - Proposed Junction Box
 - Rip Rap
 - Proposed Left Ditch
 - Proposed Right Ditch
 - Existing Property Line
 - Proposed Right-of-Way
 - FM - Existing Force Main

NOTES:
 1. DRAINAGE PIPES AND STRUCTURES NOT CONSTRUCTED PER PLANS. CONTRACTOR TO VERIFY.
 2. ALL EXISTING PIPE IN WHICH CIPP IS TO BE INSTALLED IS LOCATED UNDER THE ROAD.



Revision	Date	Description
1	09/30/10	Revised Storm Drainage Per
2	10/04/10	Revised Storm Drainage Per Utility Coordination Meeting (10/04/10)

Georgetown County
 ROADWAY IMPROVEMENTS
 POND ROAD SINHOLE REPAIR
 GEORGETOWN COUNTY, SOUTH CAROLINA

DENNIS CORPORATION
 ROADWAY IMPROVEMENTS
 for
 Georgetown County
 South Carolina
 January 2010
 Project: G0004.10
 Scale: As Shown
 Sheet: C18

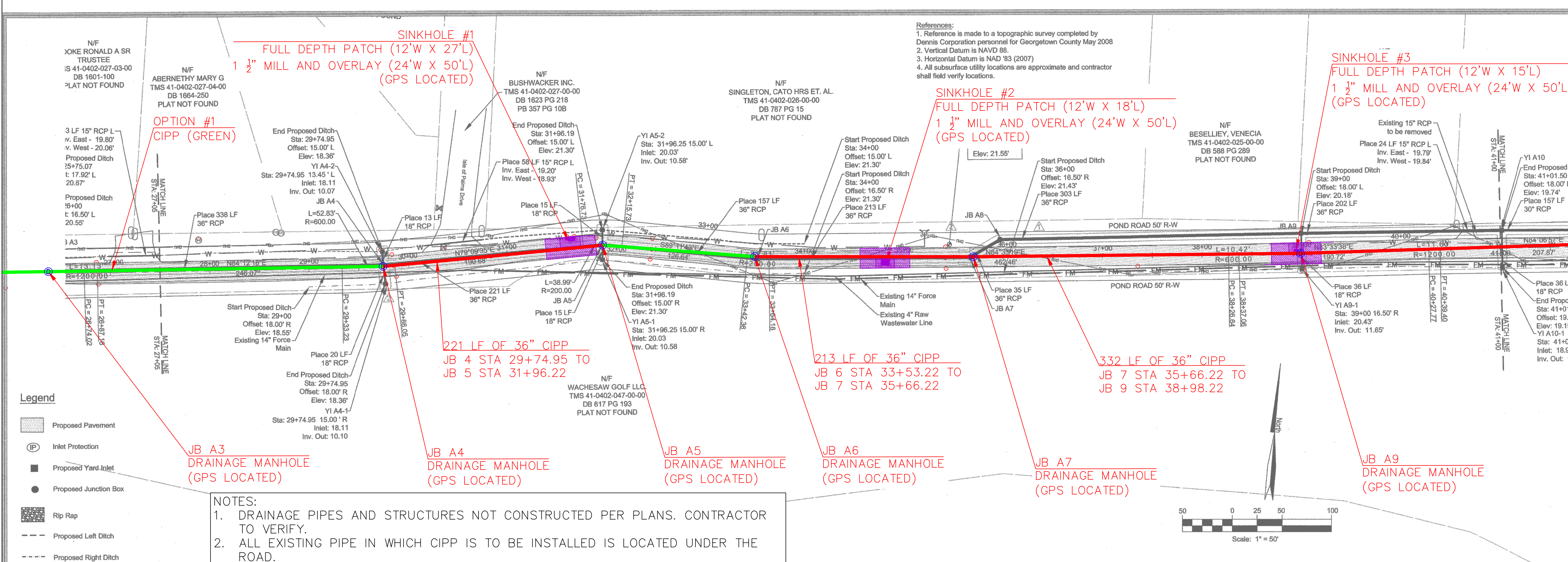
Georgetown County
 123 Screven Street, Georgetown, SC 29542
 Phone: (843) 545-3524 Fax: (843) 545-3005
 Internet: www.georgetowncountysc.org

AGENCY
 ACCREDITED
 SOUTH CAROLINA PROFESSIONAL ENGINEERS
 DENNIS CORPORATION
 NO. 303
 CERTIFICATE OF REGISTRATION

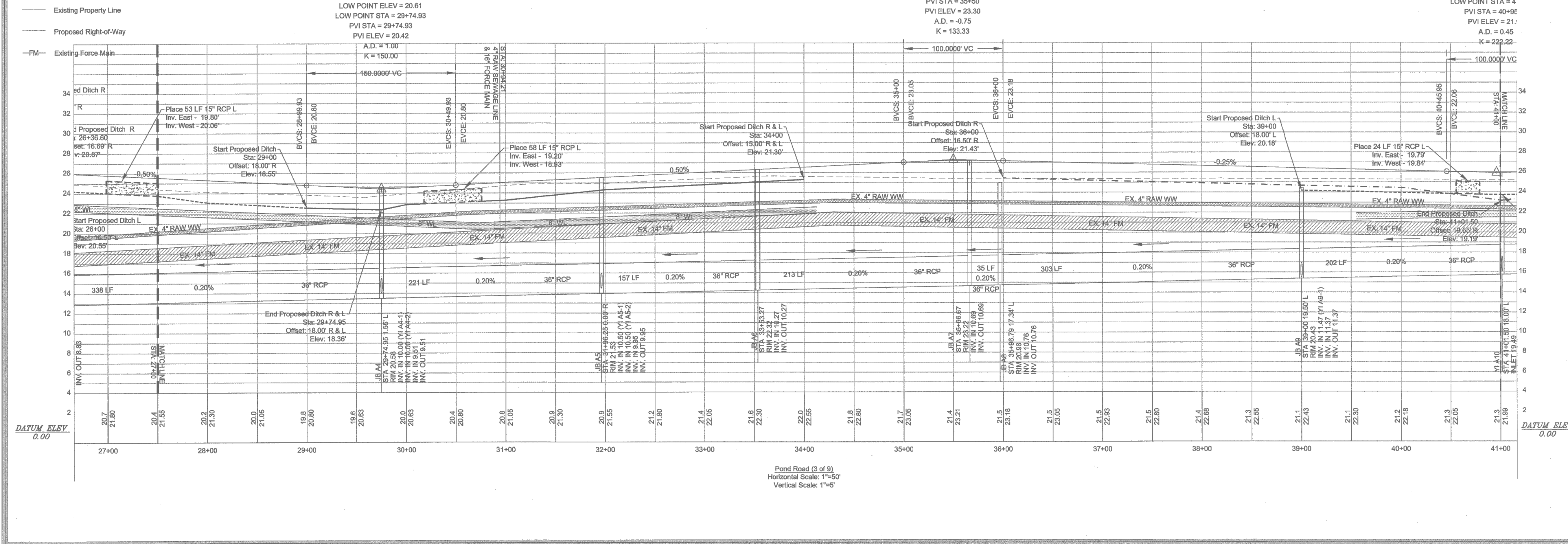
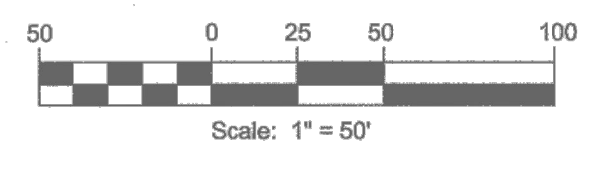
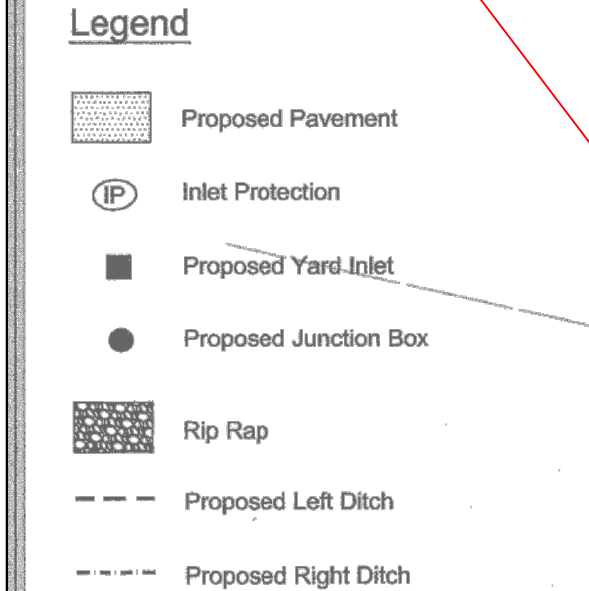
LOCATION MAP

No. 1 1/6/2019

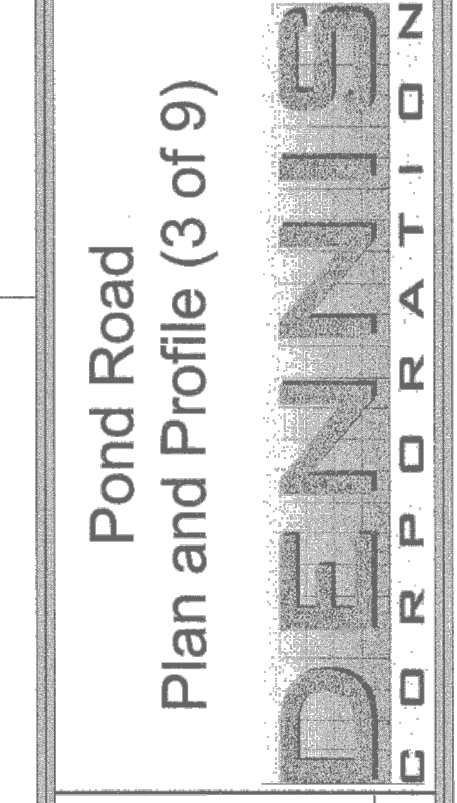
SCALE: N.T.S.
 DESIGNED BY: ASB
 DRAWN BY: MPM
 DATE: 1/6/2020
 STA 18+00 - 27+00
 SHEET NO: C-01



References:
1. Reference is made to a topographic survey completed by Dennis Corporation personnel for Georgetown County May 2008
2. Vertical Datum is NAVD 88.
3. Horizontal Datum is NAD 83 (2007)
4. All subsurface utility locations are approximate and contractor shall field verify locations.



Revision	Date	Description
1	09/30/10	Revised Storm Drainage Per GCWSD Field Locations
2	10/04/10	Revised Storm Drainage Per Utility Coordination Meeting (10/04/10)



Georgetown County
January 2010

Project
G0004.10

Scale
As Shown

Sheet
C19

Georgetown County
129 Screven Street, Georgetown, SC 29542
Phone: (843) 545-3524 Fax: (843) 545-3005
Internet: www.georgetowncountysc.org

AGENCY
ACCREDITED

LOCATION MAP

Pond Road
Plan and Profile (3 of 9)

Georgetown County
South Carolina

POND ROAD SINHOLE REPAIR
GEORGETOWN COUNTY, SOUTH CAROLINA

DESIGNED BY: ASB

DRAWN BY: MPM

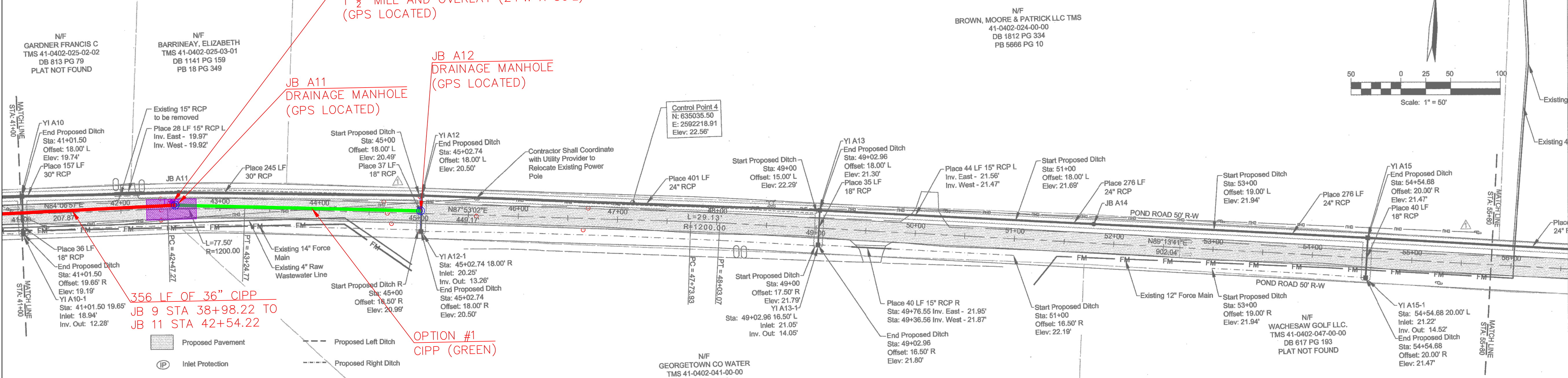
DATE: 1/6/2020

SCALE: N.T.S.

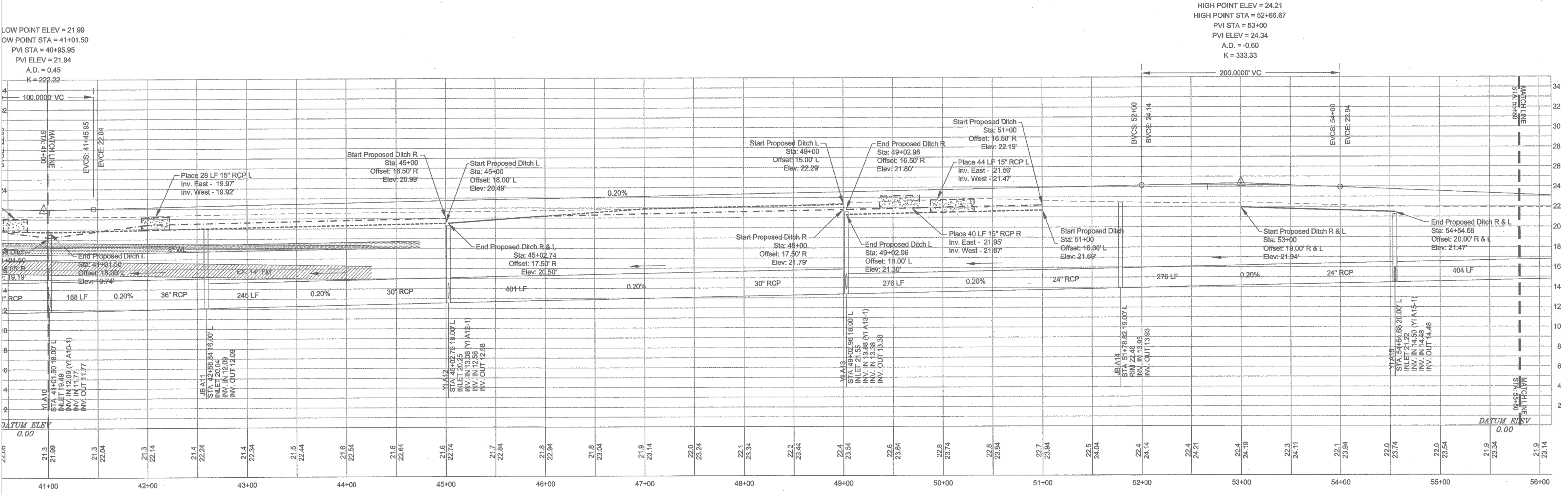
SHEET NO: C-02

PROJECT: STA 27+00 - 41+00

References:
 1. Reference is made to a topographic survey completed by Dennis Corporation personnel for Georgetown County May 2008
 2. Vertical Datum is NAVD 83.
 3. Horizontal Datum is NAD 83 (2007)
 4. All subsurface utility locations are approximate and contractor shall field verify locations.



NOTES:
 1. DRAINAGE PIPES AND STRUCTURES NOT CONSTRUCTED PER PLANS. CONTRACTOR TO VERIFY.
 2. ALL EXISTING PIPE IN WHICH CIPP IS TO BE INSTALLED IS LOCATED UNDER THE ROAD.



Pond Road (4 of 9)
 Horizontal Scale: 1"=50'
 Vertical Scale: 1"=5'

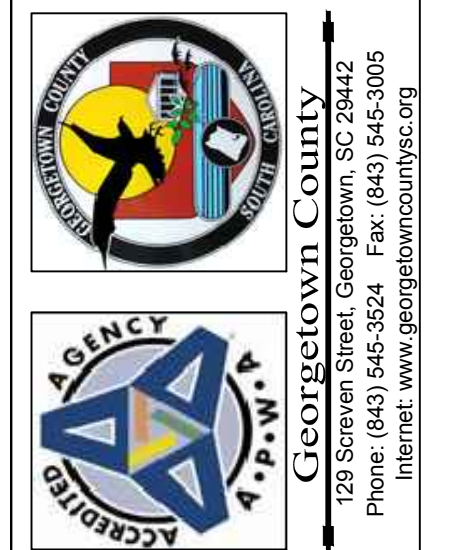
Revision	Date	Description
1	09/30/10	Revised Storm Drainage Per GCWSD Field Locates
2	10/04/10	Revised Storm Drainage Per Utility Coordination Meeting (10/04/10)

Professional Engineer Seal: DENNIS CORPORATION, No. 3103, State of South Carolina.

Pond Road
 Plan and Profile (4 of 9)

Roadway Improvements for Georgetown County
 January 2010
 Georgetown County, South Carolina

Project G0004.10
 Scale As Shown
 Sheet C20



LOCATION MAP

No.	1/6/2019
-----	----------

POND ROAD SINHOLE REPAIR
 GEORGETOWN COUNTY, SOUTH CAROLINA

SCALE:	N.T.S.
DESIGNED BY:	ASB
DRAWN BY:	MPM
DATE:	1/6/2020
STA	41+00 - 56+00
SHEET NO:	C-03