

**PAINT BID PROJECTS 2024:**

Center Point ES Painting- Approx: 60,000 Square Feet

Gymnasium, All Hallways, Main Office

Additionally: 7 Window Frames, 2 Doors, 200 feet of Handrails in Main Entrance

Brookville Painting- Approx: 28,500 Square Feet

All Hallways, Main Office, 4 Bathrooms

Additionally: Teacher's Lounge Outside Wall, 24 feet of Handrails, 10 Electrical Panel Covers, 8 Doors Inside and Out

Bryan ES Painting- Approx: 25,620 Square Feet

All Hallways

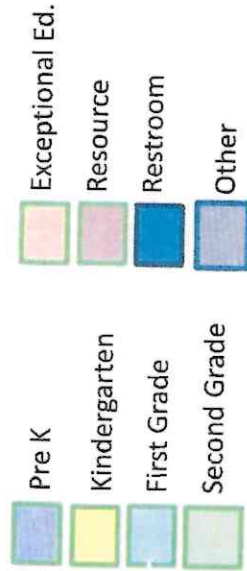
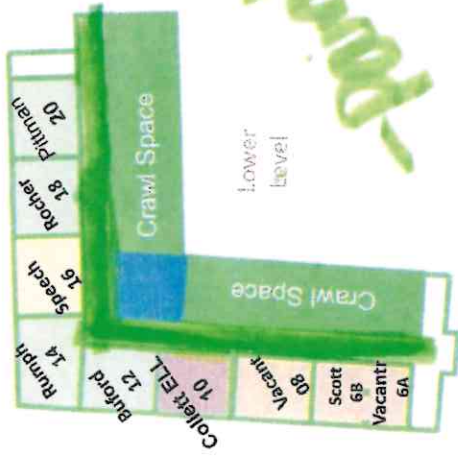
Additionally: 19 Window Frames, 4 Doors and Panels, and 4 Columns

Oak Grove ES Painting- Approx: 25,000 Square Feet

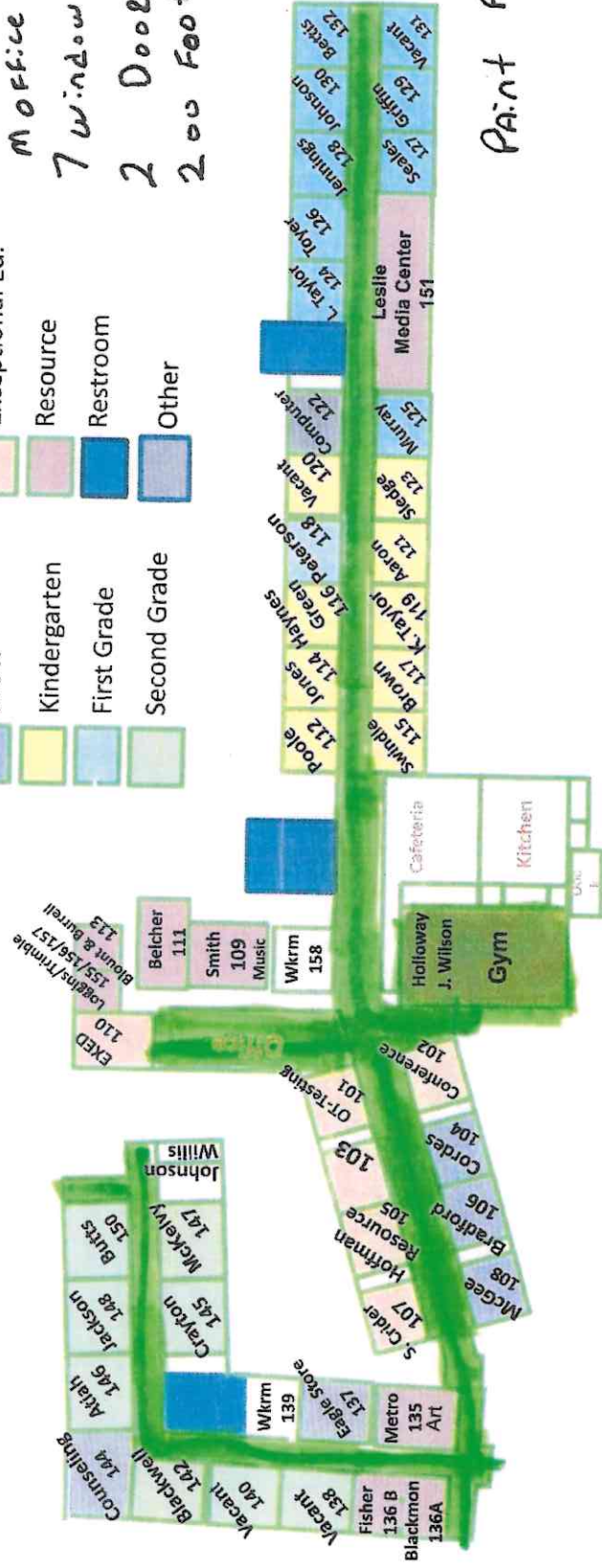
Gym Foyer Only, All Hallways

Additionally: 12 Columns, 32 Door Frames Hallway Side Only

# Center Point Elementary School



Gym Sq 19,200  
 K / First  
 Grade Hall 4,000  
 MOFFICE AREA 2,000  
 7 Window Frames  
 2 Doors  
 200 Foot Hand Rails



Paint All HALLWAYS

APPROXIMATELY 60,000 Square Feet  
 Square Footage

Brookville

Brookville Elementary School  
Tornado Drill



Students in these areas

Bryan Elem

All HALLWAYS 25, 620

19 window FRAMES

4 Doors AND Panels

4 Columns



You are here

windows Panels

windows Panels

windows Panels

*[Large green scribble]*

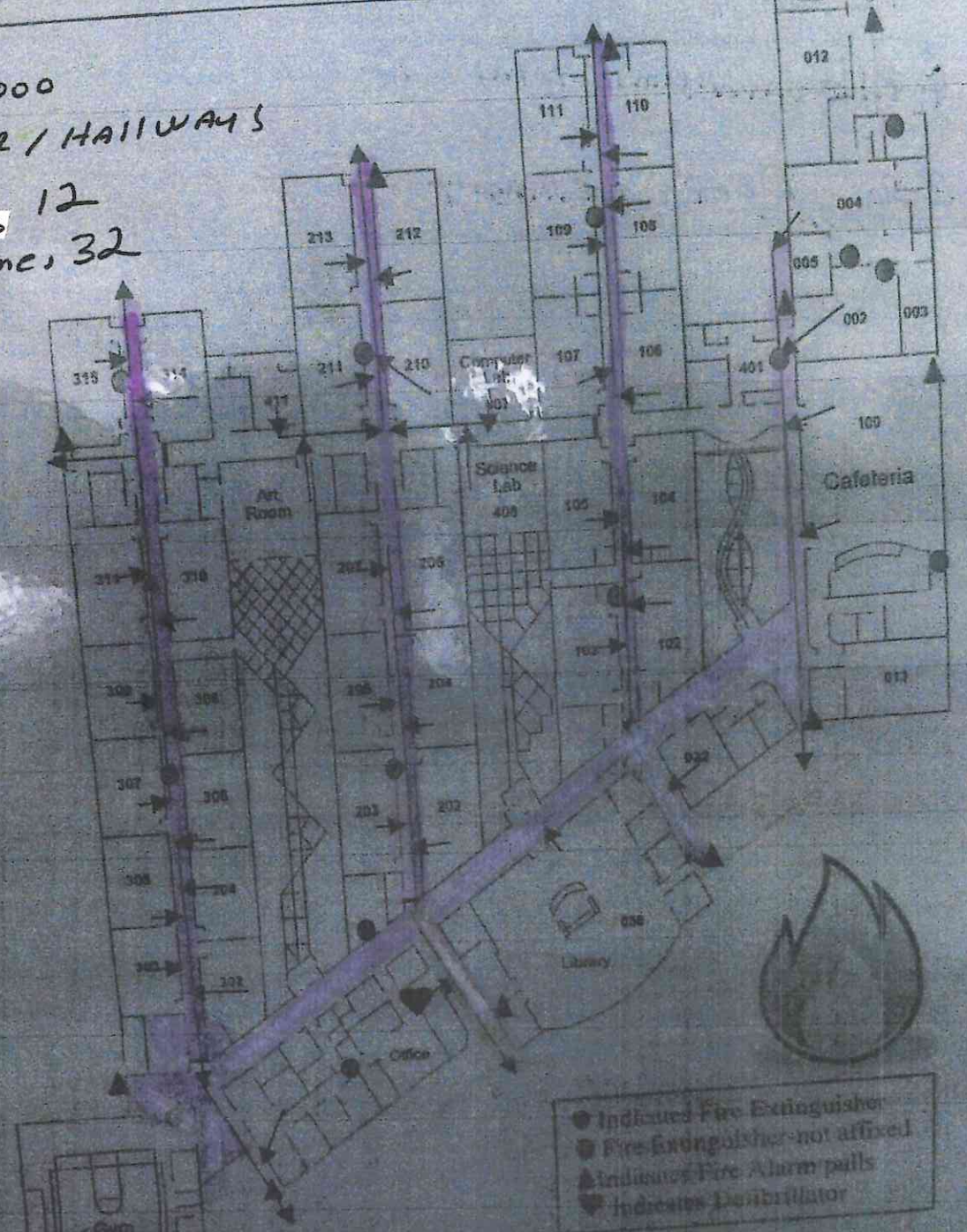
# Oak Grove Elementary School Fire Drill Exits/Extinguishers/Alarms

Total 25,000

Gym Foyer / HALLWAYS

Columns 12

Door FRAME, 32



Oak Grove Elementary

Page 1