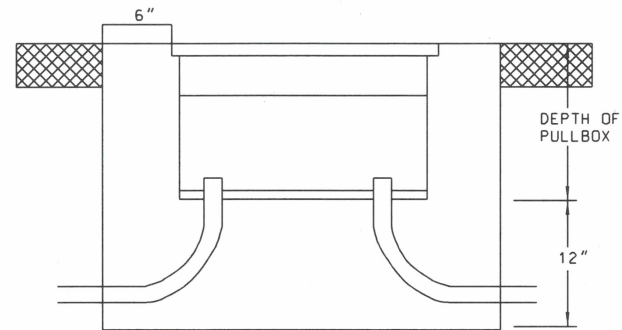


PLAN



SECTION B-B

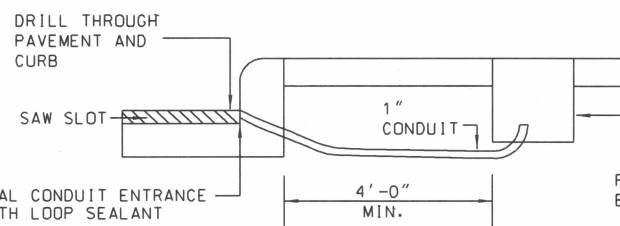
TRAFFIC SIGNAL PULLBOX DETAILS

PRECAST CLASS "B" CONCRETE OR POLYMER CONCRETE

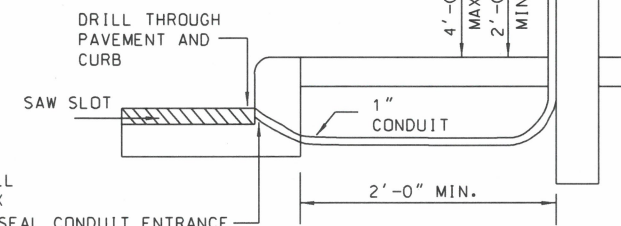
PULLBOX NOTES:

1. GRAVEL, 12" DEEP, IS REQUIRED UNDER PULLBOXES FOR DRAINAGE
2. TRAFFIC SIGNAL, TRAFFIC OR SIGNAL LEGEND REQUIRED.
3. COVERS SHALL BOLT DOWN.
4. PULL BOXES AND COVERS SHALL MEET TIER 15 REQUIREMENTS PER ANSI/SCTE 77 2002 STANDARDS.
5. TYPE A PULL BOXES TO BE USED FOR SPLICING LOOP LEAD IN WIRES TO SHIELDED CABLE ONLY.
TYPE B PULL BOXES TO BE USED FOR ALL OTHER TRAFFIC SIGNAL APPLICATIONS.
6. RIGID CONDUIT TO BE GROUNDED WITH NO. 6 SOLID BARE COPPER WIRE ATTACHED TO GROUNDING BUSHINGS IN PULL BOX.

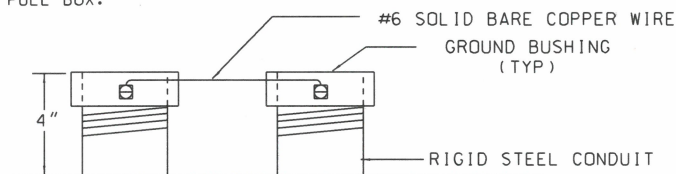
TYPE	MIN. DIMENSIONS		
	LENGTH	WIDTH	DEPTH
A	12"	12"	6"
B	28"	16"	12"



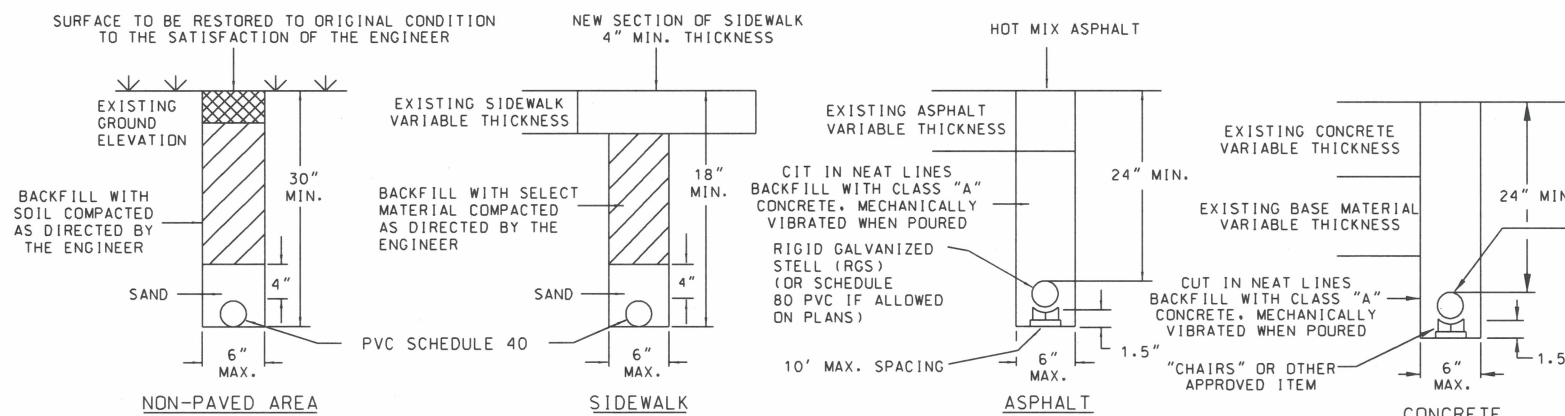
UNDERGROUND INSTALLATION (CURB) SECTION A-A



OVERHEAD INSTALLATION (CURB) SECTION A-A



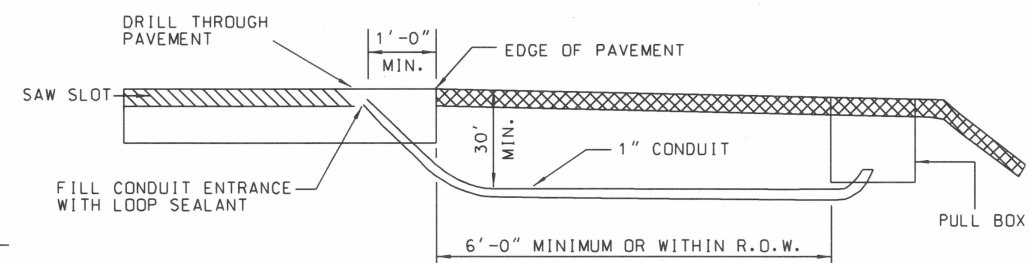
TYPICAL RIGID CONDUIT GROUNDING DETAIL



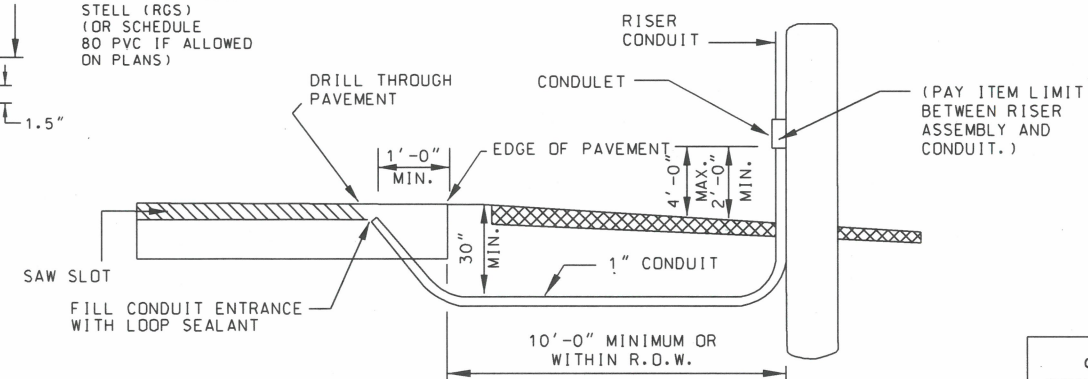
CONDUIT TRENCHING DETAIL

CONDUIT NOTES:

1. CONDUIT TO BE SEALED WITH DUCT SEALER ONCE CABLE IS INSTALLED.
2. SAWCUT SIDEWALK AT EXISTING JOINTS AND REPLACE ENTIRE SECTION TO MATCH EXISTING MATERIAL. WHEN NEW SIDEWALK IS BEING CONSTRUCTED, CONDUIT, PULLBOX, AND POLE ARE TO BE INSTALLED BEFORE SIDEWALK IS POURED.
3. CONDUIT MAY BE TRENCHED OR JACKED. ELECTRICAL SUBCONTRACTOR SHALL COORDINATED CONDUIT INSTALLATION WORK UNDER ROADWAY WITH ROADWAY CONSTRUCTION PHASING IN ORDER TO MINIMIZE JACKING.
4. ALL CONDUIT SHALL USE LARGE SWEEP RADIUS BENDS (MINIMUM RADIUS 6").
5. TYPE 2 WARNING TAPE IS TO BE INSTALLED IN ALL TRENCHES.



UNDERGROUND INSTALLATION (NO CURB)



OVERHEAD INSTALLATION (NO CURB) TYPICAL INSTALLATIONS FOR LOOP LEAD-INS

CITY OF KNOXVILLE
DEPARTMENT OF ENGINEERING

LOOP LEAD-INS,
CONDUIT AND
PULL BOXES