

**SPECIFICATIONS  
GATLINBURG PD  
8670 LONG SLEEVE SUPERSHIRT  
COLOR: Dk Navy  
DATE: Oct 2017**

**GENERAL:**

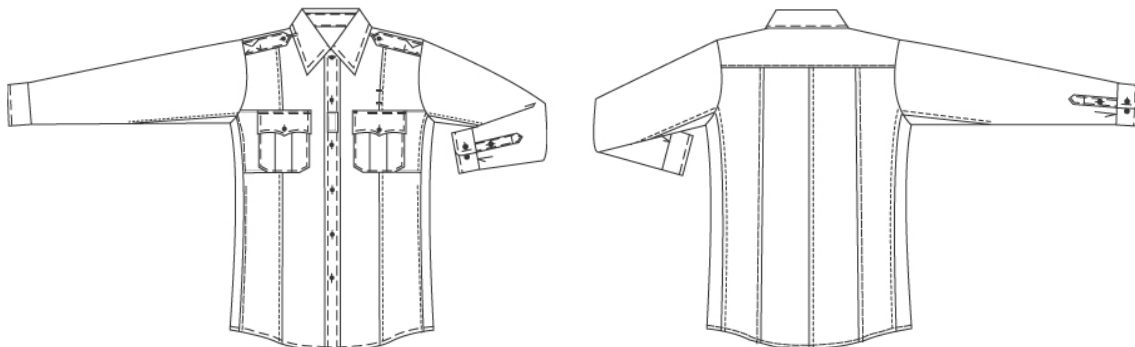
***All garment details not specifically described herein; tailoring, styling, construction, materials, and components must match the standard reference sample on file with the agency. Written specifications attempt to describe key requirements of a 3D garment and cannot do so adequately and therefore silence of the specifications does not absolve bidders from matching with precision the standard reference sample.***

Pre-bid samples will be required at the time of the bid opening. Samples may be subjected to laboratory testing at the discretion of the contracting officer. Bidders are responsible for all testing costs of their sample garments.

Bidders must enclose evidence (dated manufacturers catalogs or similar) that this item is currently a commercial in-stock style. The successful bidder will provide a full size run of try-on garments within 10 days for agency approval.

Garments must be manufactured to ISO 9001 quality assurance standard. A copy of the certificate registration will be required with the bid.

Specification based on Men's Size Medium, Regular length.



**FABRIC:**

Content – 100% Polyester plain weave tropical weight. Machine washable and dry cleanable polyester provides user comfort, uniform appearance, durability, and easy care.

Weight – 4.1-4.6 oz. per square yard

Physical Properties:

- Warp Yarn – 1/150
- Filling Yarn – 2/150
- Picks/inch – 51
- Ends/inch – 78
- Warp Stretch – 9-13
- Filling Stretch – 3-7

### **SIDE KNIT FABRIC:**

Content – 92% Nylon 8% Lycra mesh technical knit with high abrasion, pill resistance and anti-microbial finish. Breathable, 4 way stretch.

Weight – 6 oz. per square yard

Physical Properties:

- Pilling Resistance (Face) – 5
- Stretch (elongation) – 105 x 170
- Bursting Strength, min (psi) – 100

Colorfastness:

- Laundering shade change, min – 4
- 2A washes fastness – 4
- Dry/Wet Crocking – 4

**TOP FUSING:** The following small parts shall be top fused prior to sewing. Plackets, cuffs, collar, pocket flaps and epaulets.

### **GENERAL DESIGN:**

Duty shirt constructed using fabrics with stain release technology & UV protection with side stretch panels for fit and comfort that double as ventilation in the warm weather. Night-time visibility with deployable reflective material and zippered front with mock buttons.

### **COLLAR:**

Points medium spread are to be 3-1/4" in length and are to be topstitched 1/4" from the edge. Back of the stand measures 1-1/4". Permanent stays 2-1/2" in length and 1/4" wide, to be sewn inside collars so that no stitches are made through bottom leaf. Stand shall fasten with one (1) button. Inner stand and inner yoke to be lined with matching 100% Polyester inner lining, cut on the bias, to assure that the collar will lie properly. Collar shall be top fused. Reflective crosswalk trim heat-sealed onto back of collar.

### **SLEEVES:**

Straight style, one piece. The cuffs to be 2-1/4" in width, and to fasten with two-four hole buttons. The cuff shall be topstitched 1/8" at the bottom, and 1/16" from the edge of the top. An additional stitch shall run across the cuff 1/4" down from the top edge of the cuff. There shall be a sleeve vent opening 4-1/2" long from the top of the cuff. The vent placket shall be 1" wide; and shall close with a button and buttonhole, spaced approximately halfway up the opening. The sleeve seam, as well as the sleeve setting seam (i.e. securing it to be body of the shirt) must be made by a narrow safety stitch, so as to properly strengthen the seam, as well as prevent the fabric from raveling. Cuffs are to be top fused and fully lined to give body by

sewing in a self fabric inner lining, cut straight to retain its shape. Reflective crosswalk trim shall be heat-sealed on the inside edge of cuff.

**FRONT:**

The front shall have a center facing 1-1/2" wide, extending to the bottom of the shirt and be made of the same material as the shirt fabric with two rows of stitching 1" apart and 1/2" from the edge. This center facing shall be top fused to give body. There shall be a 14" Nylon zipper with a compatible colored tape sewn to the front of the shirt, replacing the second, third, fourth, and fifth buttons which are to be sewn on top of the buttonhole on the top center front facing. The buttonholes on the center front shall be placed 3/4" from the edge and spaced so that the distance from the center of the button to the center of the next button is 3-1/2". The neck button, first front button and bottom front button shall be functional.

**MESH SIDE PANELS:**

Mesh panels are sewn into side seam of sleeve and body with 1/16" topstitching around mesh panels. Sleeve mesh panels are sewn at the upper portion of the sleeve seam and measure 2-3/4" at widest part and tapers down 9" long to blend with sleeve seam. Side panels measures 2-3/4" wide top and 4-3/4" at bottom hem and sewn to the side seams of the front and back of shirt. Hem shall be clean finished using double bend back folder with 1/4" top stitching gauge. There is a 1" opening below the notebook pocket on both side seams towards the front.

**POCKETS:**

To have two (2) hidden napoleon pockets and two (2) breast pockets. Breast pockets to be topstitched 1/16" from the edge, with pointed corners, to finish 5-1/2" wide and 6-1/2" long. The left and right breast pockets shall have a pencil compartment 1-1/4" wide. Breast pockets to have 1-1/2" box pleat stitched top and bottom to prevent spreading. Reflective crosswalk trim heat sealed 3/8" below top edge of pocket.

**FLAPS:**

Has two (2) scalloped flaps, top-stitched 1/16" from the edge, to finish 5-3/4" in width, 2-3/4" in long at center, 2-1/2" in long at sides. Flaps are secured to the front of the shirt with two (2) rows of stitching 3/16" apart. Left and right flaps have a pencil opening corresponding to pencil compartment in the pocket. Flaps are fully lined to give body, by sewing in a 100% Dacron polyester interlining, 425 weight mellowpress, cut straight. There is to be a button and buttonhole sewn on the flap. The side points of the flaps are to be secured to the pocket by means of Velcro fasteners sewn onto the flaps and pockets, the hook portion being stitched to the pocket and pile portion sewn to the underside of the flap. The pile piece sewn to the flap shall not be sewn through and through the flap, but must be attached during the manufacturing process before the flap is assembled to prevent the stitching from showing.

**BADGE SLING:**

Is reinforced on the inside of the shirt by means of a strip of shirt material 1-1/2" wide, stitched and folded, so that there are no raw edges. This reinforcement strip is to be set approximately 2" down from the top of the pocket, to be caught in the double stitching of the flap setting stitches and extend and be caught in the joining seam at the front of yoke. To have two small horizontal buttonholes 1-3/8" apart with the button buttonhole 1-1/4" above the top of the left flap.

**SHOULDER:**

The shoulder strap shall be topstitched 1/16" from the edge and be pointed at the end toward the neck of the shirt. The other end shall be sewn in the sleeve and taper to 1-1/2" wide. The length is to be graduated conforming to the size of the shirt. The strap shall be cross stitched to the shoulder approximately 2" from the sleeve head seam.

**BACK YOKE:**

One-piece back yoke fully lined with matching Nylon Sateen or Dacron Polyester. The yoke is to measure approximately 4-1/4" high at the center back.

**MIC TAB:**

A single microphone attachment tab is centered vertically on the front placket, between second and third button.

**THREAD:**

All thread shall be polyester wrapped on monofilament polyester. Color to match.

**STITCHING:**

All stitching conforms to Federal Standard 751 specifications (FED-STD-751). All stitch types are sewn at stitch per inch (S.P.I.) rates individually set by operation at no less than 10 S.P.I. and not more than 12 S.P.I. to insure extended sewn wear life. All thread tension is evenly maintained to eliminate right or loose stitching. All seam allowances are to be maintained so that there are no raw edges, run offs, twist, pleats, puckers or open seams.

**PERMANENT MILITARY CREASE:**

Shirt has permanent 1/16" military stitched-in creases. One crease in each front, extends from hem to shoulder joining seam. Front pockets and flaps are centered over the crease. Crease is not to run through pocket or flap. Three (3) vertical creases in back; middle crease on center back line and side creases spaced equally from center crease.

**SIZES:**

Permanent size marking giving neck size to be located inside of collar.

**CARE LABEL:**

Care instructions to be on hem of shirt in front.

**PRESSING & FINISHING:**

Shirt shall be carefully pressed by hand in a first class manner. All loose threads to be thoroughly trimmed.

**STANDARD SIZE RANGE:**

Men's: 14.5 – 20.5, (30-31), (32-33), (34-35), (36-37), (38-39) Sleeve Lengths  
Women's: 30-54, Short and Regular Lengths

**MEASUREMENTS:**

Men's: Size 15.5, Regular

Neck: 16.75 (plus or minus 0.25 inches)  
1/2 Chest: 23 (plus or minus 0.75 inches)  
Back Length: 32.5 (plus or minus 0.5 inches)

Women's: size 36, regular

Neck: 15 (plus or minus 0.5 inches)  
1/2 Chest: 20.875 (plus or minus 0.75 inches)  
Back Length: 28.5 (plus or minus 0.5 inches)