

SECTOR 5  
BEACH AND DUNE RESTORATION PROJECT  
CONSTRUCTION PLANS  
INDIAN RIVER COUNTY, FLORIDA

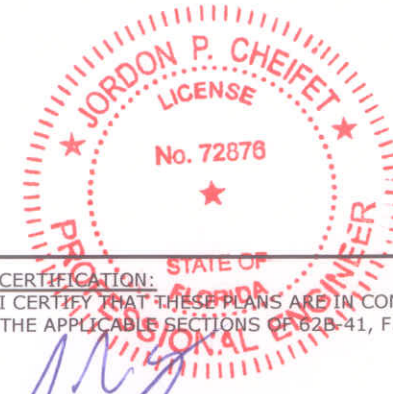
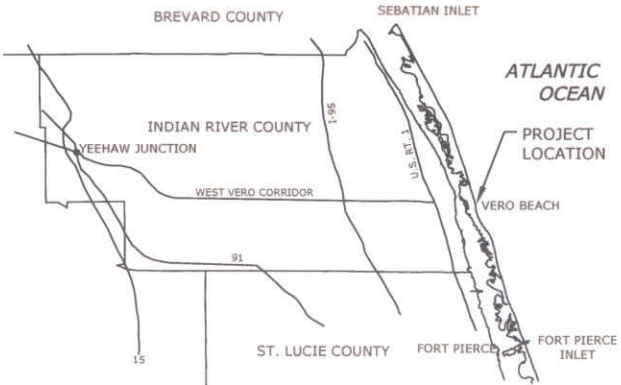
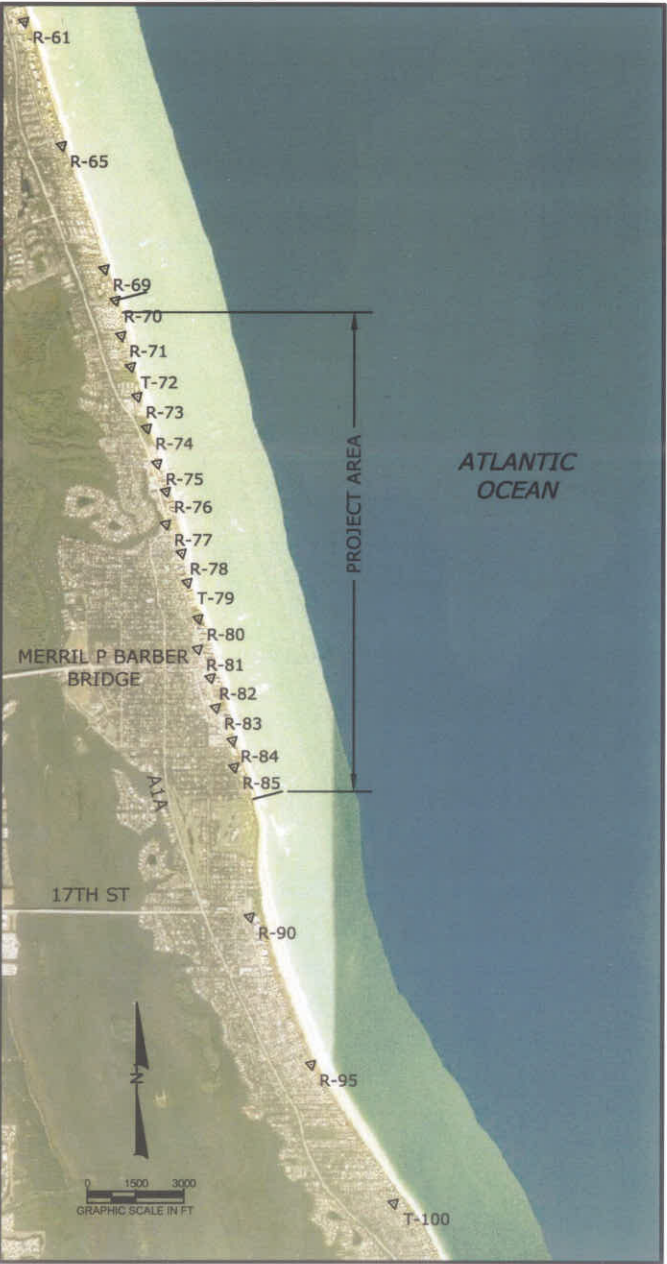


SHEET INDEX

- 1 COVER SHEET  
2 CONTROL DATA SHEET  
3-14 PLAN VIEW  
15-19 CROSS SECTIONS  
20 DUNE PLANTING DETAILS

PLAN VIEW LEGEND

- ▷ R-144 FDEP MONUMENT AND ID  
--- MEAN HIGH WATER LINE 2018  
--- MEAN HIGH WATER LINE 2019-FDPE NO. 7174  
--- PROJECT BASELINE  
--- FILL PLACEMENT  
--- CONSTRUCTION ACCESS  
--- 2017 HARDBOTTOM  
--- DUNE VEGETATION AREA



CERTIFICATION:  
I CERTIFY THAT THESE PLANS ARE IN COMPLIANCE WITH  
THE APPLICABLE SECTIONS OF 62B-41, F.A.C.

JORDAN P. CHEIFET, P.E. NO. 72876

6/6/19  
DATE

APTIM ENVIRONMENTAL & INFRASTRUCTURE, LLC  
2481 N.W. BOCA RATON BOULEVARD  
BOCA RATON, FLORIDA 33431  
PH: (561) 391-8102  
FAX: (561) 391-9116  
C.O.A. FL #9317  
C.O.A. LA #2531  
www.APTIM.com

REVISIONS	
No.	Description

Checked by:	JC
Reviewed by:	JC
Submitted by:	JC
Comm. No.:	631236907
AS NOTED	

Designed by:	JC
Drawn by:	GK
Date:	06/06/19
Plot Scale:	AS NOTED

SECTOR 5  
BEACH AND DUNE RESTORATION PROJECT  
CONSTRUCTION PLANS  
INDIAN RIVER COUNTY, FLORIDA  
COVER SHEET

DRAWING NO.  
C-1  
SHEET 1 OF 21



C:\Users\jerry\My Documents\local temp\APTIM\4480\443236907C\_PV.dwg - Jun 07, 2018 @ 1:20pm - BNY Krystinmak

PAY PROFILES			
STATION	NORTHING	EASTING	PERPENDICULAR DISTANCE TO NEXT STATION
0+00	1219687.21	861494.32	100'
1+00	1219589.85	861517.14	100'
2+00	1219492.49	861539.95	100'
3+00	1219395.13	861562.77	100'
4+00	1219297.76	861585.59	100'
5+00	1219200.40	861608.40	100'
6+00	1219103.04	861631.22	100'
7+00	1219005.68	861654.04	100'
8+00	1218908.32	861676.86	100'
9+00	1218810.95	861699.67	100'
10+00	1218713.59	861722.49	100'
11+00	1218616.23	861745.31	100'
12+00	1218518.87	861768.13	100'
13+00	1218421.51	861790.94	100'
14+00	1218324.14	861813.76	100'
15+00	1218226.78	861836.58	100'
16+00	1218129.42	861859.39	100'
17+00	1218032.06	861882.21	100'
18+00	1217934.70	861905.03	100'
19+00	1217837.33	861927.85	100'
20+00	1217739.97	861950.66	98'
20+98	1217645.35	861972.84	102'
22+00	1217545.25	861996.30	100'
23+00	1217447.89	862019.12	100'
24+00	1217350.52	862041.93	100'
25+00	1217253.16	862064.75	100'
26+00	1217155.80	862087.57	100'
27+00	1217058.44	862110.38	100'
28+00	1216961.08	862133.20	100'
29+00	1216863.71	862156.02	100'
30+00	1216766.35	862178.84	100'
31+00	1216668.99	862201.65	21'
31+21	1216648.82	862206.38	79'
32+00	1216573.13	862230.00	100'
33+00	1216477.67	862259.78	100'
34+00	1216382.21	862289.57	100'
35+00	1216286.75	862319.35	100'
36+00	1216191.29	862349.14	100'
37+00	1216095.83	862378.92	100'
38+00	1216000.37	862408.71	100'
39+00	1215904.91	862438.50	100'
40+00	1215809.45	862468.28	66'
40+66	1215746.62	862487.88	34'
41+00	1215713.23	862495.23	100'
42+00	1215615.57	862516.74	100'
43+00	1215517.91	862538.24	100'
44+00	1215420.25	862559.74	100'
45+00	1215322.59	862581.25	100'
46+00	1215224.93	862602.75	100'
47+00	1215127.27	862624.26	100'
48+00	1215029.61	862645.76	100'

PAY PROFILES			
STATION	NORTHING	EASTING	PERPENDICULAR DISTANCE TO NEXT STATION
49+00	1214931.95	862667.26	100'
50+00	1214834.29	862688.77	104'
51+04	1214732.37	862711.21	96'
52+00	1214640.93	862739.25	100'
53+00	1214545.33	862768.57	100'
54+00	1214449.72	862797.90	100'
55+00	1214354.12	862827.22	100'
56+00	1214258.51	862856.54	100'
57+00	1214162.91	862885.86	100'
58+00	1214067.30	862915.18	100'
59+00	1213971.70	862944.50	100'
60+00	1213876.09	862973.82	100'
61+00	1213780.49	863003.14	100'
62+00	1213684.88	863032.46	53'
62+53	1213633.94	863048.09	47'
63+00	1213589.28	863061.79	100'
64+00	1213493.67	863091.11	100'
65+00	1213398.07	863120.43	100'
66+00	1213302.47	863149.75	100'
67+00	1213206.86	863179.07	100'
68+00	1213111.26	863208.39	100'
69+00	1213015.65	863237.71	100'
70+00	1212920.05	863267.03	100'
71+00	1212824.44	863296.35	65'
71+65	1212762.17	863315.45	35'
72+00	1212730.44	863329.89	100'
73+00	1212639.42	863371.31	100'
74+00	1212548.40	863412.74	100'
75+00	1212457.38	863454.16	100'
76+00	1212366.36	863495.58	83'
76+83	1212291.12	863529.82	17'
77+00	1212274.46	863534.60	100'
78+00	1212178.34	863562.17	100'
79+00	1212082.21	863589.74	100'
80+00	1211986.09	863617.32	100'
81+00	1211889.96	863644.89	37'
81+37	1211854.69	863655.01	63'
82+00	1211792.49	863666.75	100'
83+00	1211694.22	863685.31	100'
84+00	1211595.96	863703.86	100'
85+00	1211497.70	863722.42	100'
86+00	1211399.43	863740.97	100'
87+00	1211301.17	863759.53	100'
88+00	1211202.91	863778.08	100'
89+00	1211104.64	863796.64	100'
90+00	1211006.38	863815.19	100'
91+00	1210908.12	863833.75	67'
91+67	1210842.45	863846.15	33'
92+00	1210809.85	863852.30	100'
93+00	1210711.59	863870.86	100'
94+00	1210613.32	863889.41	100'

PAY PROFILES			
STATION	NORTHING	EASTING	PERPENDICULAR DISTANCE TO NEXT STATION
95+00	1210515.06	863907.97	100'
96+00	1210416.80	863926.52	100'
97+00	1210318.53	863945.08	100'
98+00	1210220.27	863963.63	100'
99+00	1210122.01	863982.19	100'
100+00	1210023.74	864000.74	105'
101+05	1209920.87	864020.17	95'
102+00	1209830.38	864050.09	100'
103+00	1209735.43	864081.48	100'
104+00	1209640.49	864112.87	100'
105+00	1209545.55	864144.26	100'
106+00	1209450.60	864175.65	100'
107+00	1209355.66	864207.05	100'
108+00	1209260.71	864238.44	100'
109+00	1209165.77	864269.83	100'
110+00	1209070.82	864301.22	100'
111+00	1208975.88	864332.62	100'
112+00	1208880.93	864364.01	87'
112+87	1208798.30	864391.33	13'
113+00	1208785.99	864395.40	100'
114+00	1208691.04	864426.79	100'
115+00	1208596.10	864458.19	100'
116+00	1208501.15	864489.58	100'
117+00	1208406.21	864520.97	100'
118+00	1208311.26	864552.37	100'
119+00	1208216.32	864583.76	100'
120+00	1208121.37	864615.15	100'
121+00	1208026.43	864646.54	79'
121+79	1207951.06	864671.47	21'
122+00	1207931.26	864677.22	100'
123+00	1207835.24	864705.16	100'
124+00	1207739.22	864733.09	100'
125+00	1207643.20	864761.02	100'
126+00	1207547.18	864788.95	100'
127+00	1207451.16	864816.89	100'
128+00	1207355.14	864844.82	100'
129+00	1207259.13	864872.75	100'
130+00	1207163.11	864900.68	100'
131+00	1207067.09	864928.62	63'
131+63	1207006.97	864946.10	37'
132+00	1206971.07	864956.55	100'
133+00	1206875.05	864984.48	100'
134+00	1206779.03	865012.41	100'
135+00	1206683.01	865040.34	67'
135+67	1206618.11	865059.22	33'
136+00	1206586.53	865066.54	65'
136+65	1206522.95	865081.28	35'
137+00	1206489.12	865089.12	100'
138+00	1206391.70	865111.70	100'
139+00	1206294.28	865134.28	56'
139+56	1206240.07	865146.84	44'

PAY PROFILES			
STATION	NORTHING	EASTING	PERPENDICULAR DISTANCE TO NEXT STATION
140+00	1206196.86	865156.85	105'
141+05	1206094.42	865180.60	95'
142+00	1206002.03	865202.01	100'
143+00	1205904.61	865224.59	100'
144+00	1205807.19	865247.17	100'
145+00	1205709.77	865269.74	100'
146+00	1205612.36	865292.32	100'
147+00	1205514.94	865314.90	100'
148+00	1205417.52	865337.48	100'
149+00	1205320.10	865360.05	100'
150+00	1205222.68	865382.63	100'
151+00	1205125.27	865405.21	100'
152+00	1205027.85	865427.79	54'
152+54	1204974.96	865440.05	46'
153+00	1204931.12	865452.99	100'
154+00	1204835.21	865481.29	100'
155+00	1204739.30	865509.60	100'
156+00	1204643.39	865537.91	100'
157+00	1204547.48	865566.21	100'
158+00	1204451.57	865594.52	100'
159+00	1204355.66	865622.83	100'
160+00	1204259.75	865651.13	58'
160+58	1204203.83	865667.64	42'
161+00	1204163.84	865679.44	100'
162+00	1204067.93	865707.75	100'
163+00	1203972.02	865736.06	100'
164+00	1203876.11	865764.36	100'
165+00	1203780.20	865792.67	100'
166+00	1203684.29	865820.98	100'
167+00	1203588.38	865849.28	100'
168+00	1203492.47	865877.59	100'
169+00	1203396.56	865905.90	100'
170+00	1203300.70	865934.19	100'
171+00	1203204.74	865962.51	100'
172+00	1203108.83	865990.82	100'
173+00	1203012.92	866019.13	100'
174+00	1202917.01	866047.43	100'
175+00	1202821.10	866075.74	100'
176+00	1202725.19	866104.05	100'
177+00	1202629.28	866132.36	100'
178+00	1202533.37	866160.66	100'
179+00	1202437.46	866188.97	100'
180+00	1202341.55	866217.28	0'

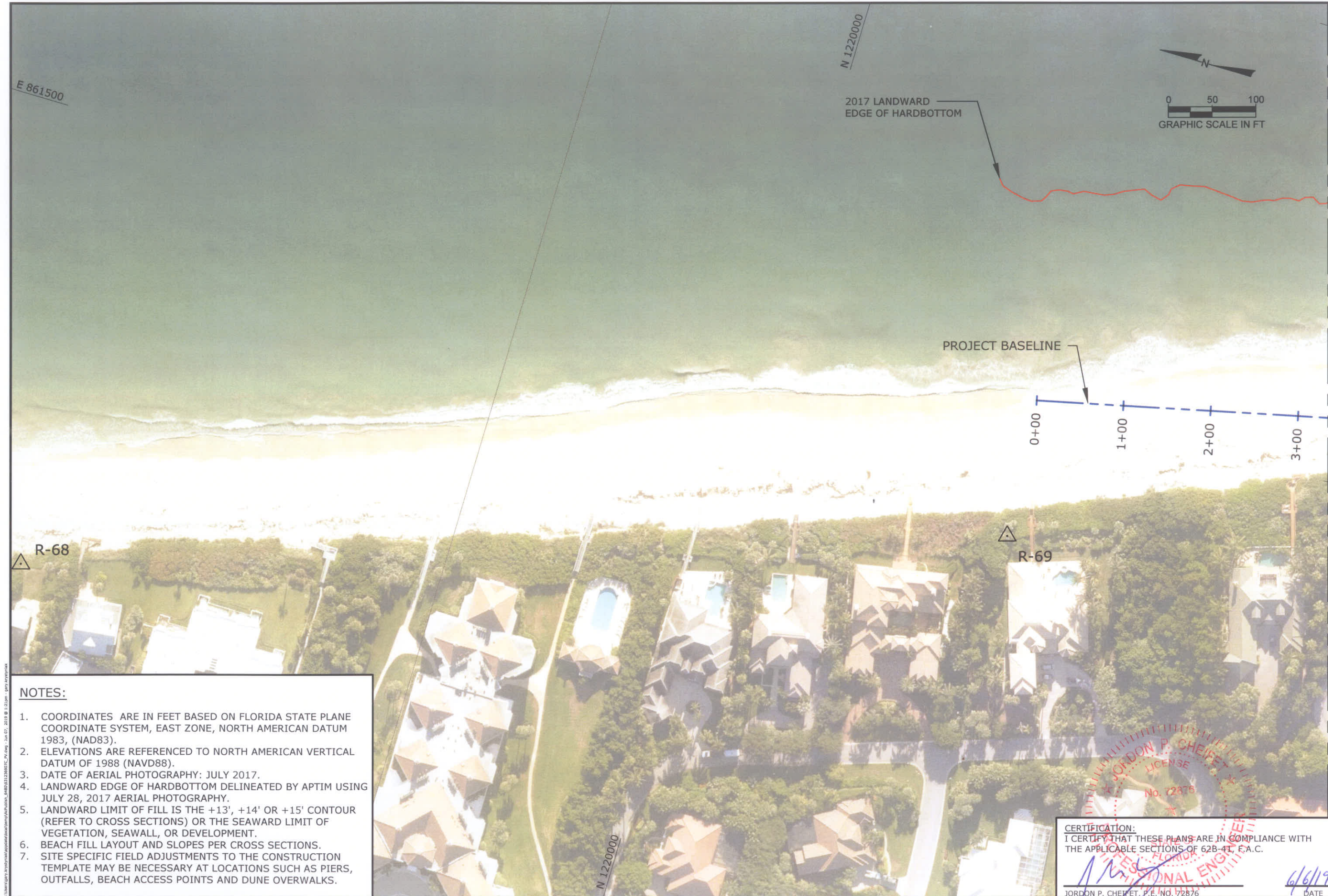
NOTES:

- ALL PAY PROFILES SHALL BE SURVEYED AT AN AZIMUTH PERPENDICULAR TO THE BASELINE SHOWN ON SHEETS PV-1 TO P-12.
- CONTRACTOR WILL ONLY BE PAID FOR SAND PLACED WITHIN THE LINES AND GRADES AS SHOWN ON SHEETS PV-1 TO PV-12.
- COORDINATES ARE IN FEET BASED ON THE FLORIDA STATE PLANE COORDINATE SYSTEM, EAST ZONE, NORTH AMERICAN DATUM OF 1983 (NAD83).
- ELEVATIONS ARE IN FEET REFERENCED TO NORTH AMERICAN VERTICAL DATUM OF 1988 (NAVD88).

BENCH MARK CONTROL POINTS SECOND ORDER CONTROL (A- MONUMENTS)			
MONUMENT ID	NORTHING	EASTING	ELEVATION
88-78-A06	1272548.00	838955.50	3.93
88-78-A07	126888.10	840766.30	4.38
88-78-A08	1265051.00	841989.60	4.95
88-78-A09	1260281.00	844426.00	6.93
88-78-A10	1255223.00	847007.70	8.2
88-78-A11	1251561.00	848670.10	7.94
88-78-A12	1248469.00	850063.80	5.53
88-78-A15	1238793.00	854935.10	9.84
88-78-A16	1234676.00	856148.20	8.85
88-78-A17	1230803.00	857367.10	9.49
88-78-A18A	1226660.00	858423.20	8.56

BASELINE COORDINATES					BASELINE COORDINATES			
POINT ID	NORTHING	EASTING	STATION		POINT ID	NORTHING	EASTING	STATION
POB	1218713.59	861722.49	10+00		IP-12	1208798.30	864391.33	112+87
IP-1	1218518.86	861768.12	12+00		IP-13	1207951.06	864671.47	121+79
IP-2	1217645.35	861972.84	20+97		IP-14	1207006.97	864946.10	131+63
IP-3	1216648.82	862206.38	31+21		IP-15	1206618.11	865059.22	135+67
IP-4	1215746.62	862487.88	40+66		IP-16	1206522.95	865081.28	136+65
IP-5	1214732.37	862711.21	51+04		IP-17	1206240.07	865146.84	139+56
IP-6	1213633.94	863048.09	62+53		IP-18	1206094.42	865180.60	141+05
IP-7	1212762.17	863315.45	71+65		IP-19	1204974.96	865440.05	152+54
IP-8	1212291.12	863529.82	76+83		IP-20	1204203.83	865667.64	160+58
IP-9	1211854.69	863655.01	81+37	IP-21	1203300.70	865934.19	170+00	
IP-10	1210842.45	863846.15	91+67	POE	1203108.83	865990.82	172+00	
IP-11	1209920.87	864020.17	101+05					





**NOTES:**

1. COORDINATES ARE IN FEET BASED ON FLORIDA STATE PLANE COORDINATE SYSTEM, EAST ZONE, NORTH AMERICAN DATUM 1983, (NAD83).
2. ELEVATIONS ARE REFERENCED TO NORTH AMERICAN VERTICAL DATUM OF 1988 (NAVD88).
3. DATE OF AERIAL PHOTOGRAPHY: JULY 2017.
4. LANDWARD EDGE OF HARDBOTTOM DELINEATED BY APTIM USING JULY 28, 2017 AERIAL PHOTOGRAPHY.
5. LANDWARD LIMIT OF FILL IS THE +13', +14' OR +15' CONTOUR (REFER TO CROSS SECTIONS) OR THE SEAWARD LIMIT OF VEGETATION, SEAWALL, OR DEVELOPMENT.
6. BEACH FILL LAYOUT AND SLOPES PER CROSS SECTIONS.
7. SITE SPECIFIC FIELD ADJUSTMENTS TO THE CONSTRUCTION TEMPLATE MAY BE NECESSARY AT LOCATIONS SUCH AS PIERS, OUTFALLS, BEACH ACCESS POINTS AND DUNE OVERWALKS.

**CERTIFICATION:**  
I CERTIFY THAT THESE PLANS ARE IN COMPLIANCE WITH  
THE APPLICABLE SECTIONS OF 62B-41, F.A.C.

JORDON P. CHEIFET, P.E. NO. 72876

6/6/19  
DATE

<b>APTIM ENVIRONMENTAL &amp; INFRASTRUCTURE, LLC</b> 2481 N.W. BOCA RATON BOULEVARD BOCA RATON, FLORIDA 33431 www.APTIM.com PH. (561) 391-8102 FAX (561) 391-8116 C.O.A. FL. #9317 C.O.A. LA. #2531	<b>SECTOR 5</b> BEACH AND DUNE RESTORATION PROJECT CONSTRUCTION PLANS INDIAN RIVER COUNTY, FLORIDA PLAN VIEW		DRAWING NO. <b>PV-1</b>
	SHEET 3 OF 21		

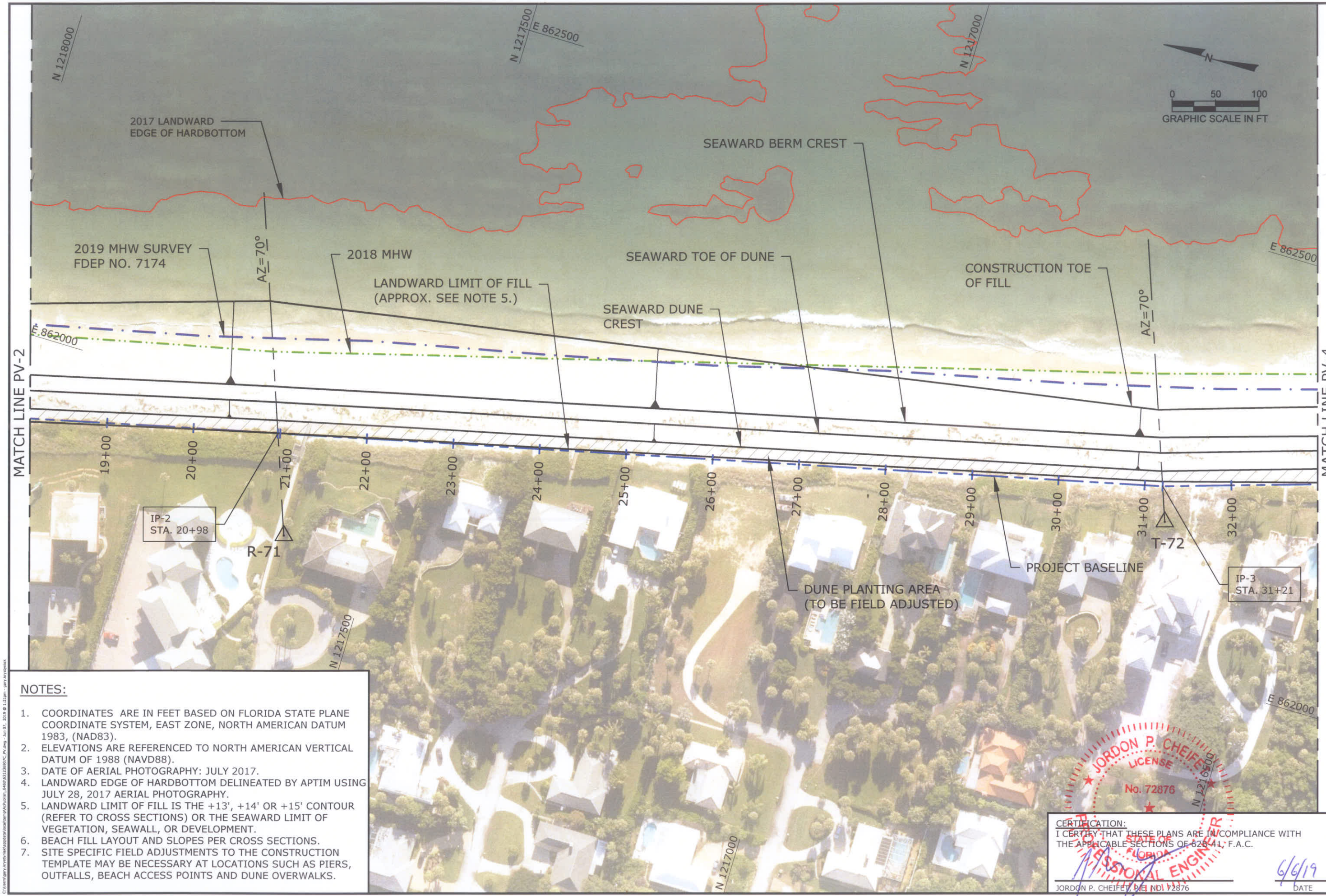
REVISIONS	
No.	Description

Designed by: JC	Checked by: JC
Drawn by: JC	Reviewed by: JC
Date: 06/06/19	Submitted by: JC
Plot Scale: AS NOTED	Comm. No.: 631236907









NOTES:

1. COORDINATES ARE IN FEET BASED ON FLORIDA STATE PLANE COORDINATE SYSTEM, EAST ZONE, NORTH AMERICAN DATUM 1983, (NAD83).
2. ELEVATIONS ARE REFERENCED TO NORTH AMERICAN VERTICAL DATUM OF 1988 (NAVD88).
3. DATE OF AERIAL PHOTOGRAPHY: JULY 2017.
4. LANDWARD EDGE OF HARBOTTOM DELINEATED BY APTIM USING JULY 28, 2017 AERIAL PHOTOGRAPHY.
5. LANDWARD LIMIT OF FILL IS THE +13', +14' OR +15' CONTOUR (REFER TO CROSS SECTIONS) OR THE SEAWARD LIMIT OF VEGETATION, SEAWALL, OR DEVELOPMENT.
6. BEACH FILL LAYOUT AND SLOPES PER CROSS SECTIONS.
7. SITE SPECIFIC FIELD ADJUSTMENTS TO THE CONSTRUCTION TEMPLATE MAY BE NECESSARY AT LOCATIONS SUCH AS PIERS, OUTFALLS, BEACH ACCESS POINTS AND DUNE OVERWALKS.

**APTIM ENVIRONMENTAL & INFRASTRUCTURE, LLC**  
2481 N.W. BOCA RATON BOULEVARD  
BOCA RATON, FLORIDA 33431  
www.APTIM.com  
PH. (561) 391-8102  
FAX (561) 391-9116  
C.O.A. FL. #9317  
C.O.A. LA. #2551

REVISIONS	
No.	Description

Reference Files:	Designed by:	Checked by:
	JC	JC

Drawn by:	Reviewed by:	Submitted by:
GK	JC	JC

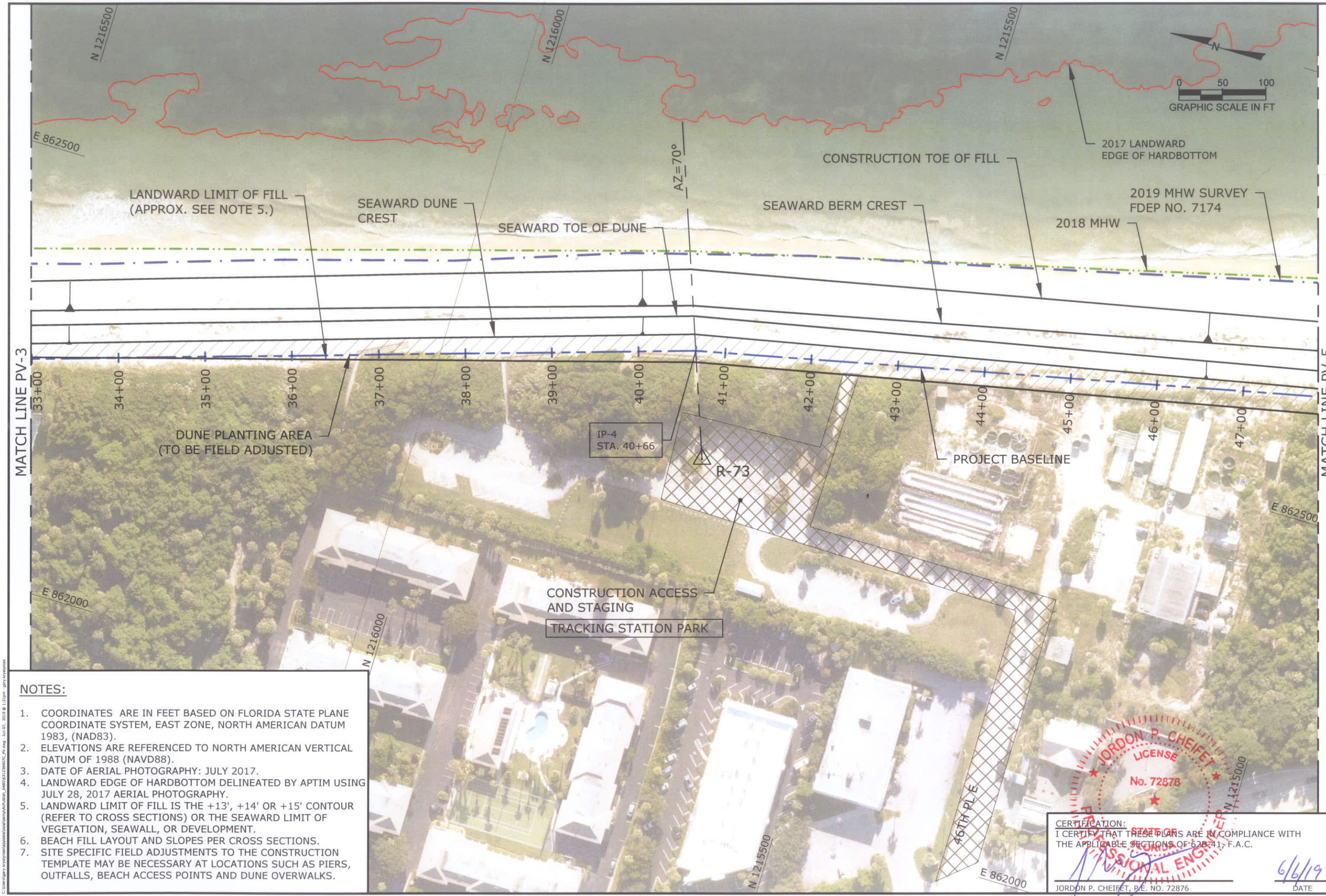
Date:	Plot Scale:	Comm. No.:
06/06/19	AS NOTED	631236907

SECTOR 5  
BEACH AND DUNE RESTORATION PROJECT  
CONSTRUCTION PLANS  
INDIAN RIVER COUNTY, FLORIDA  
PLAN VIEW

DRAWING NO.  
**PV-3**

SHEET 5 OF 21





NOTES:

1. COORDINATES ARE IN FEET BASED ON FLORIDA STATE PLANE COORDINATE SYSTEM, EAST ZONE, NORTH AMERICAN DATUM 1983, (NAD83).
2. ELEVATIONS ARE REFERENCED TO NORTH AMERICAN VERTICAL DATUM OF 1988 (NAVD88).
3. DATE OF AERIAL PHOTOGRAPHY: JULY 2017.
4. LANDWARD EDGE OF HARDBOTTOM DELINEATED BY APTIM USING JULY 28, 2017 AERIAL PHOTOGRAPHY.
5. LANDWARD LIMIT OF FILL IS THE +13', +14' OR +15' CONTOUR (REFER TO CROSS SECTIONS) OR THE SEAWARD LIMIT OF VEGETATION, SEAWALL, OR DEVELOPMENT.
6. BEACH FILL LAYOUT AND SLOPES PER CROSS SECTIONS.
7. SITE SPECIFIC FIELD ADJUSTMENTS TO THE CONSTRUCTION TEMPLATE MAY BE NECESSARY AT LOCATIONS SUCH AS PIERS, OUTFALLS, BEACH ACCESS POINTS AND DUNE OVERWALKS.

**APTIM ENVIRONMENTAL & INFRASTRUCTURE, LLC**  
PH: (561) 391-8102  
FAX: (561) 391-8116  
C.O.A. FL: #9317  
C.O.A. LA: #2951

2481 N.W. BOCA RATON BOULEVARD  
BOCA RATON, FLORIDA 33431  
www.APTIM.com

REVISIONS	Checked by:	Designed by:	Reference Files:
	JC	JC	

No.	Date	Description

SECTOR 5  
BEACH AND DUNE RESTORATION PROJECT  
CONSTRUCTION PLANS  
INDIAN RIVER COUNTY, FLORIDA  
PLAN VIEW

DRAWING NO.  
**PV-4**

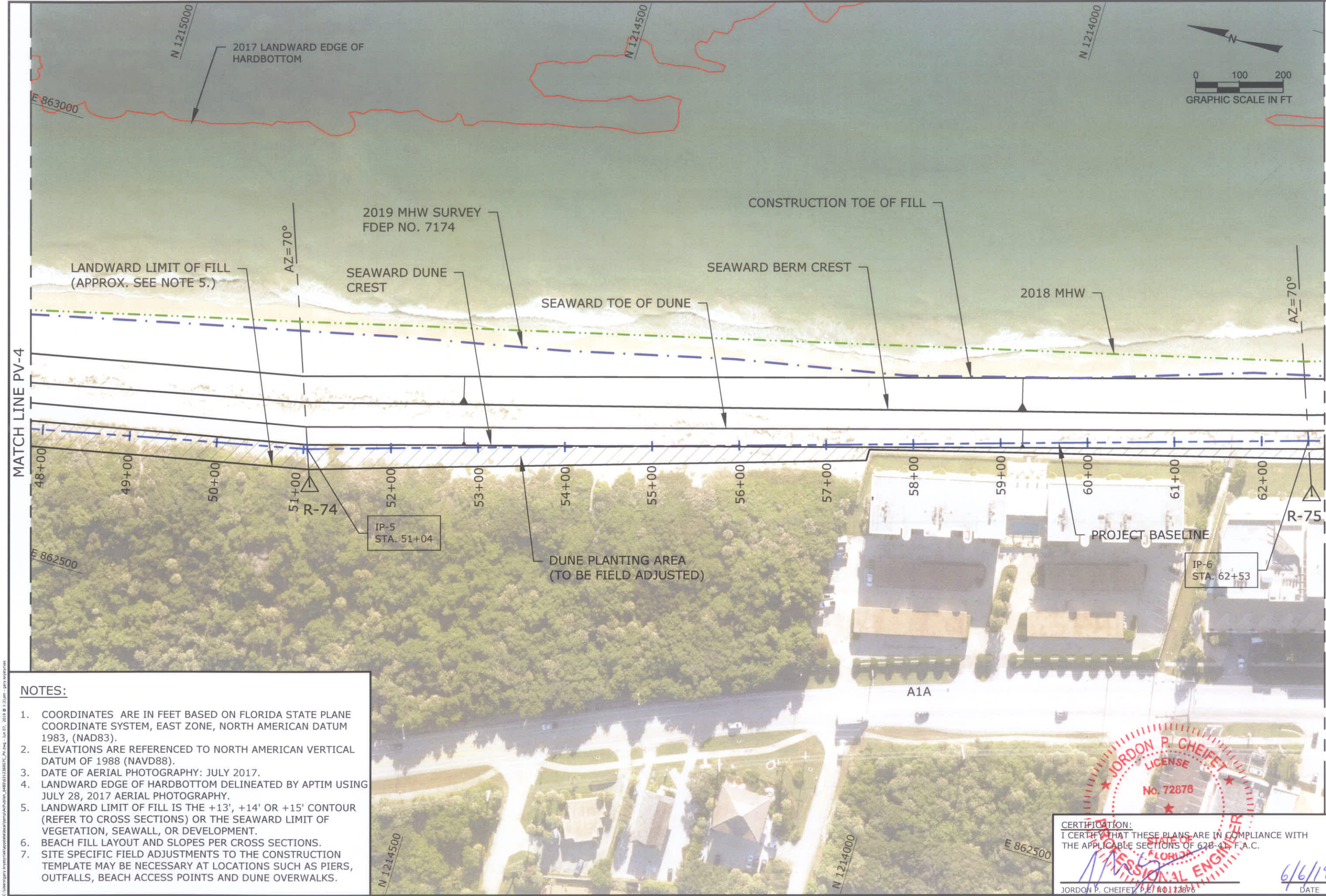
SHEET 6 OF 21

JORDAN P. CHEIFET  
LICENSE  
No. 72876

CERTIFICATION:  
I CERTIFY THAT THESE PLANS ARE IN COMPLIANCE WITH  
THE APPLICABLE SECTIONS OF 62B-41, F.A.C.

JORDAN P. CHEIFET, P.E. NO. 72876  
DATE: 6/6/19





**NOTES:**

1. COORDINATES ARE IN FEET BASED ON FLORIDA STATE PLANE COORDINATE SYSTEM, EAST ZONE, NORTH AMERICAN DATUM 1983, (NAD83).
2. ELEVATIONS ARE REFERENCED TO NORTH AMERICAN VERTICAL DATUM OF 1988 (NAVD88).
3. DATE OF AERIAL PHOTOGRAPHY: JULY 2017.
4. LANDWARD EDGE OF HARDBOTTOM DELINEATED BY APTIM USING JULY 28, 2017 AERIAL PHOTOGRAPHY.
5. LANDWARD LIMIT OF FILL IS THE +13', +14' OR +15' CONTOUR (REFER TO CROSS SECTIONS) OR THE SEAWARD LIMIT OF VEGETATION, SEAWALL, OR DEVELOPMENT.
6. BEACH FILL LAYOUT AND SLOPES PER CROSS SECTIONS.
7. SITE SPECIFIC FIELD ADJUSTMENTS TO THE CONSTRUCTION TEMPLATE MAY BE NECESSARY AT LOCATIONS SUCH AS PIERS, OUTFALLS, BEACH ACCESS POINTS AND DUNE OVERWALKS.

CERTIFICATION:  
I CERTIFY THAT THESE PLANS ARE IN COMPLIANCE WITH  
THE APPLICABLE SECTIONS OF 62B-41, F.A.C.

JORDON P. CHEIFET, P.E. NO. 123876

6/6/19  
DATE

**APTIM ENVIRONMENTAL & INFRASTRUCTURE, LLC**  
2481 N.W. BOCA RATON BOULEVARD  
BOCA RATON, FLORIDA 33431  
www.APTIM.com

PH: (561) 391-8102  
FAX: (561) 391-8116  
C.O.A. #52317  
C.O.A. #2331

REVISIONS	
No.	Description

Designed by:	Checked by:
JC	JC

Drawn by:	Reviewed by:
GK	JC

Date:	Submitted by:
06/06/19	JC

Plot Scale:	Comm. No.:
AS NOTED	031226907

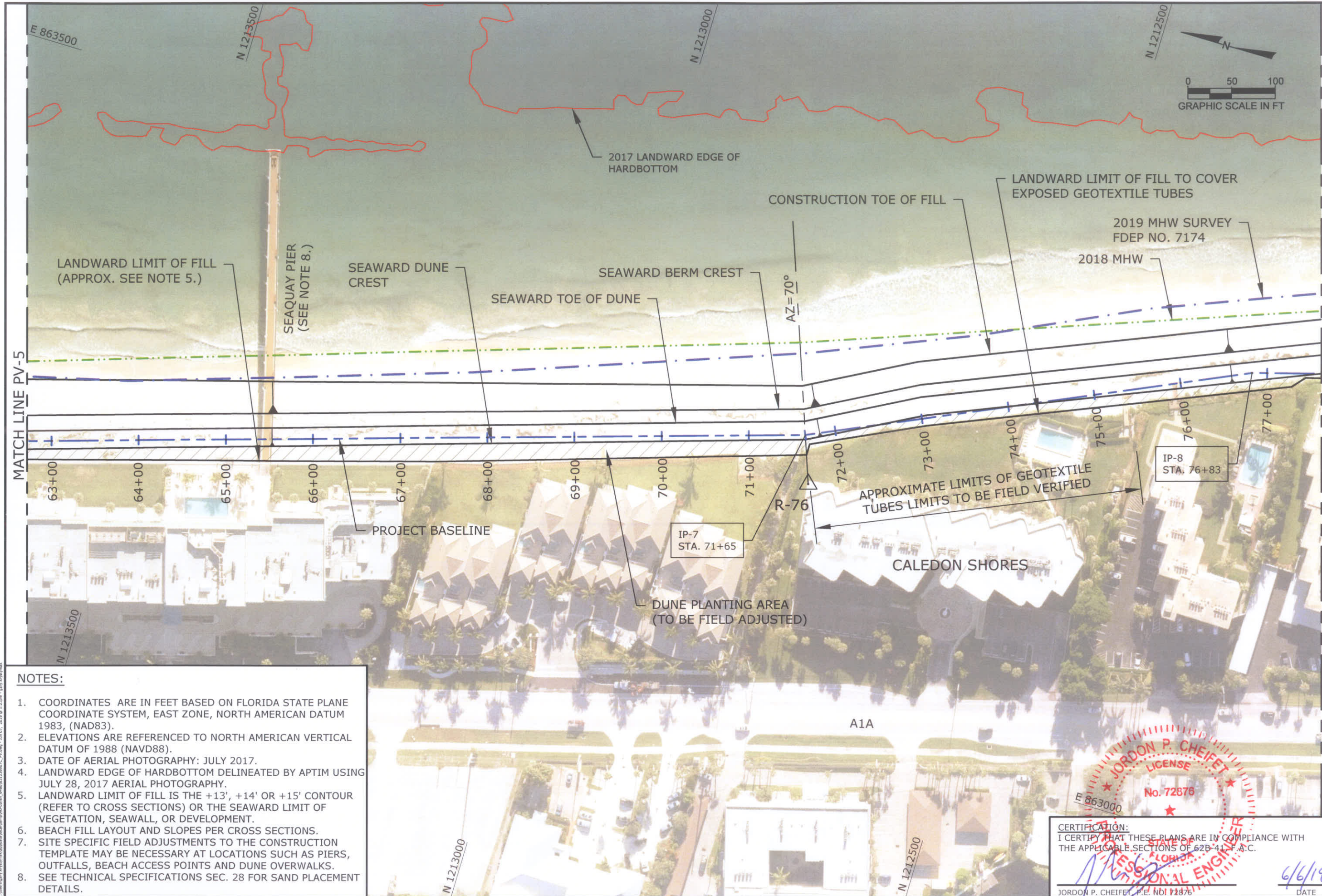
SECTOR 5  
BEACH AND DUNE RESTORATION PROJECT  
CONSTRUCTION PLANS  
INDIAN RIVER COUNTY, FLORIDA

PLAN VIEW

DRAWING NO.  
**PV-5**

SHEET 7 OF 21





NOTES:

- COORDINATES ARE IN FEET BASED ON FLORIDA STATE PLANE COORDINATE SYSTEM, EAST ZONE, NORTH AMERICAN DATUM 1983, (NAD83).
- ELEVATIONS ARE REFERENCED TO NORTH AMERICAN VERTICAL DATUM OF 1988 (NAVD88).
- DATE OF AERIAL PHOTOGRAPHY: JULY 2017.
- LANDWARD EDGE OF HARDBOTTOM DELINEATED BY APTIM USING JULY 28, 2017 AERIAL PHOTOGRAPHY.
- LANDWARD LIMIT OF FILL IS THE +13', +14' OR +15' CONTOUR (REFER TO CROSS SECTIONS) OR THE SEAWARD LIMIT OF VEGETATION, SEAWALL, OR DEVELOPMENT.
- BEACH FILL LAYOUT AND SLOPES PER CROSS SECTIONS.
- SITE SPECIFIC FIELD ADJUSTMENTS TO THE CONSTRUCTION TEMPLATE MAY BE NECESSARY AT LOCATIONS SUCH AS PIERS, OUTFALLS, BEACH ACCESS POINTS AND DUNE OVERWALKS.
- SEE TECHNICAL SPECIFICATIONS SEC. 28 FOR SAND PLACEMENT DETAILS.

**APTIM ENVIRONMENTAL & INFRASTRUCTURE, LLC**  
2481 N.W. BOCA RATON BOULEVARD  
BOCA RATON, FLORIDA 33431  
www.APTIM.com

PH. (561) 391-8102  
FAX (561) 391-9116  
C.O.A. FL. #9317  
C.O.A. LA. #2531

REVISIONS	Checked by:	Reviewed by:	Drawn by:	Date:	Submitted by:	Comm. No.:	No.:	Date:
	JC	JC	GK	06/06/19	JC	631236907		

SECTOR 5  
BEACH AND DUNE RESTORATION PROJECT  
CONSTRUCTION PLANS  
INDIAN RIVER COUNTY, FLORIDA  
PLAN VIEW

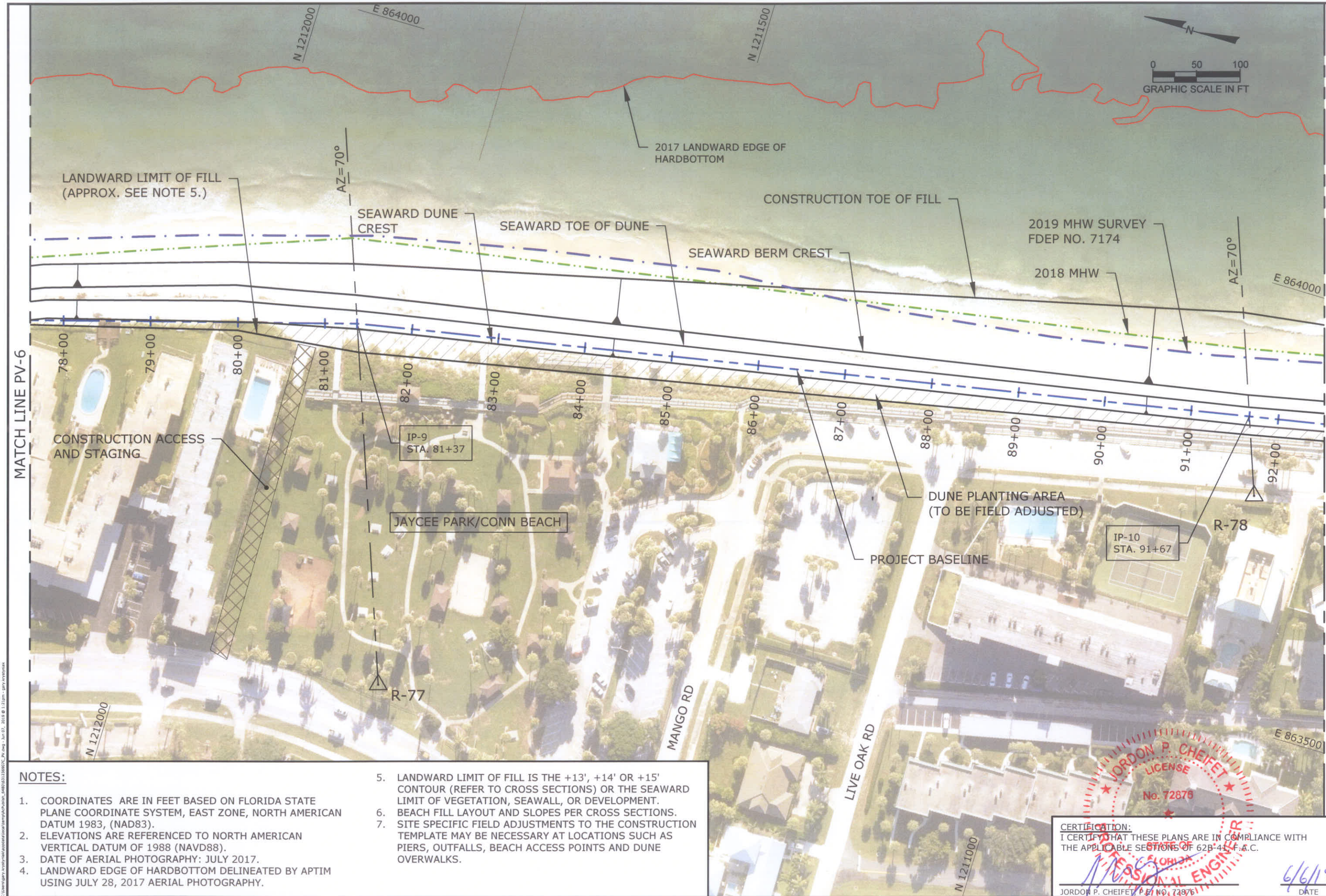
DRAWING NO.  
**PV-6**

SHEET 8 OF 21

CERTIFICATION:  
I CERTIFY THAT THESE PLANS ARE IN COMPLIANCE WITH  
THE APPLICABLE SECTIONS OF 62B-41 F.A.C.

**JORDAN P. CHEIFET, P.E. No. 72876**  
6/6/19  
DATE





- NOTES:**
- COORDINATES ARE IN FEET BASED ON FLORIDA STATE PLANE COORDINATE SYSTEM, EAST ZONE, NORTH AMERICAN DATUM 1983, (NAD83).
  - ELEVATIONS ARE REFERENCED TO NORTH AMERICAN VERTICAL DATUM OF 1988 (NAVD88).
  - DATE OF AERIAL PHOTOGRAPHY: JULY 2017.
  - LANDWARD EDGE OF HARDBOTTOM DELINEATED BY APTIM USING JULY 28, 2017 AERIAL PHOTOGRAPHY.
  - LANDWARD LIMIT OF FILL IS THE +13', +14' OR +15' CONTOUR (REFER TO CROSS SECTIONS) OR THE SEAWARD LIMIT OF VEGETATION, SEAWALL, OR DEVELOPMENT.
  - BEACH FILL LAYOUT AND SLOPES PER CROSS SECTIONS.
  - SITE SPECIFIC FIELD ADJUSTMENTS TO THE CONSTRUCTION TEMPLATE MAY BE NECESSARY AT LOCATIONS SUCH AS PIERS, OUTFALLS, BEACH ACCESS POINTS AND DUNE OVERWALKS.

**APTIM ENVIRONMENTAL & INFRASTRUCTURE, LLC**  
2481 N.W. BOCA RATON BOULEVARD  
BOCA RATON, FLORIDA 33431  
PH: (561) 391-8102  
FAX: (561) 391-8116  
C.O.A. #2351  
C.O.A. #2351  
www.aptim.com

REVISIONS	Checked by:	Reviewed by:	Submitted by:	Drawn by:	Date:	Project No.:	Revision No.:	Description
	JC	JC	JC	GK	05/06/19	631236907		

SECTOR 5  
BEACH AND DUNE RESTORATION PROJECT  
CONSTRUCTION PLANS  
INDIAN RIVER COUNTY, FLORIDA  
PLAN VIEW

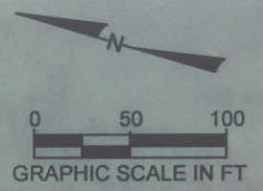
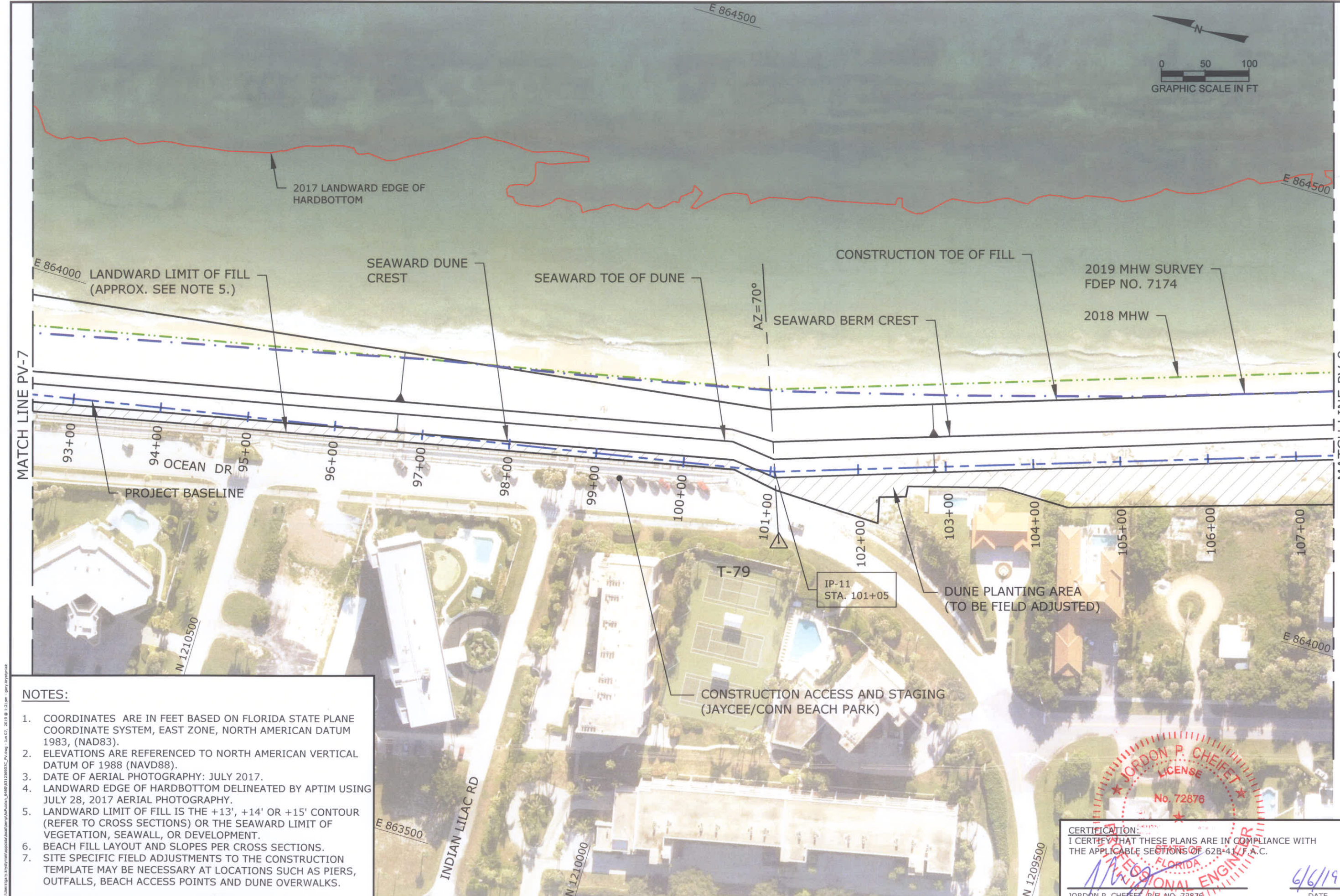
DRAWING NO.  
**PV-7**

SHEET 9 OF 21

**CERTIFICATION:**  
I CERTIFY THAT THESE PLANS ARE IN COMPLIANCE WITH THE APPLICABLE SECTIONS OF 62B-41, F.A.C.

**JORDON P. CHEIFET**  
P.E. NO. 72876  
DATE: 6/6/19





- NOTES:**
- COORDINATES ARE IN FEET BASED ON FLORIDA STATE PLANE COORDINATE SYSTEM, EAST ZONE, NORTH AMERICAN DATUM 1983, (NAD83).
  - ELEVATIONS ARE REFERENCED TO NORTH AMERICAN VERTICAL DATUM OF 1988 (NAVD88).
  - DATE OF AERIAL PHOTOGRAPHY: JULY 2017.
  - LANDWARD EDGE OF HARDBOTTOM DELINEATED BY APTIM USING JULY 28, 2017 AERIAL PHOTOGRAPHY.
  - LANDWARD LIMIT OF FILL IS THE +13', +14' OR +15' CONTOUR (REFER TO CROSS SECTIONS) OR THE SEAWARD LIMIT OF VEGETATION, SEAWALL, OR DEVELOPMENT.
  - BEACH FILL LAYOUT AND SLOPES PER CROSS SECTIONS.
  - SITE SPECIFIC FIELD ADJUSTMENTS TO THE CONSTRUCTION TEMPLATE MAY BE NECESSARY AT LOCATIONS SUCH AS PIERS, OUTFALLS, BEACH ACCESS POINTS AND DUNE OVERWALKS.

**CERTIFICATION:**  
I CERTIFY THAT THESE PLANS ARE IN COMPLIANCE WITH THE APPLICABLE SECTIONS OF 62B-41, F.A.C.

**JORDON P. CHEIFET**  
LICENSE  
No. 72876  
FLORIDA  
PROFESSIONAL ENGINEER

DATE: 6/6/19

**APTIM ENVIRONMENTAL & INFRASTRUCTURE, LLC**  
2481 N.W. BOCA RATON BOULEVARD  
BOCA RATON, FLORIDA 33431  
www.APTIM.com

PH: (561) 391-8102  
FAX: (561) 391-8116  
C.O.A. #9317  
C.O.A. #2531

REVISIONS	No.	Date	Description

SECTOR 5  
BEACH AND DUNE RESTORATION PROJECT  
CONSTRUCTION PLANS  
INDIAN RIVER COUNTY, FLORIDA  
PLAN VIEW

DRAWING NO.  
**PV-8**

SHEET 10 OF 21





- NOTES:**
- COORDINATES ARE IN FEET BASED ON FLORIDA STATE PLANE COORDINATE SYSTEM, EAST ZONE, NORTH AMERICAN DATUM 1983, (NAD83).
  - ELEVATIONS ARE REFERENCED TO NORTH AMERICAN VERTICAL DATUM OF 1988 (NAVD88).
  - DATE OF AERIAL PHOTOGRAPHY: JULY 2017.
  - LANDWARD EDGE OF HARDBOTTOM DELINEATED BY APTIM USING JULY 28, 2017 AERIAL PHOTOGRAPHY.
  - LANDWARD LIMIT OF FILL IS THE +13', +14' OR +15' CONTOUR (REFER TO CROSS SECTIONS) OR THE SEAWARD LIMIT OF VEGETATION, SEAWALL, OR DEVELOPMENT.
  - BEACH FILL LAYOUT AND SLOPES PER CROSS SECTIONS.
  - SITE SPECIFIC FIELD ADJUSTMENTS TO THE CONSTRUCTION TEMPLATE MAY BE NECESSARY AT LOCATIONS SUCH AS PIERS, OUTFALLS, BEACH ACCESS POINTS AND DUNE OVERWALKS.

**CERTIFICATION:**  
I CERTIFY THAT THESE PLANS ARE IN COMPLIANCE WITH THE APPLICABLE SECTIONS OF 62B-41, F.A.C.

JORDON P. CHEIFET, P.E. NO. 72876

6/6/19

DATE

**APTIM ENVIRONMENTAL & INFRASTRUCTURE, LLC**  
2481 N.W. BOCA RATON BOULEVARD  
BOCA RATON, FLORIDA 33431  
www.APTIM.com

PH. (561) 391-8102  
FAX (561) 391-9116  
C.O.A. FL #9317  
C.O.A. LA #2531

REVISIONS	Checked by:	Reviewed by:	Submitted by:	Comp. No.:	Date	Description
	JC	JC	JC	631236907		

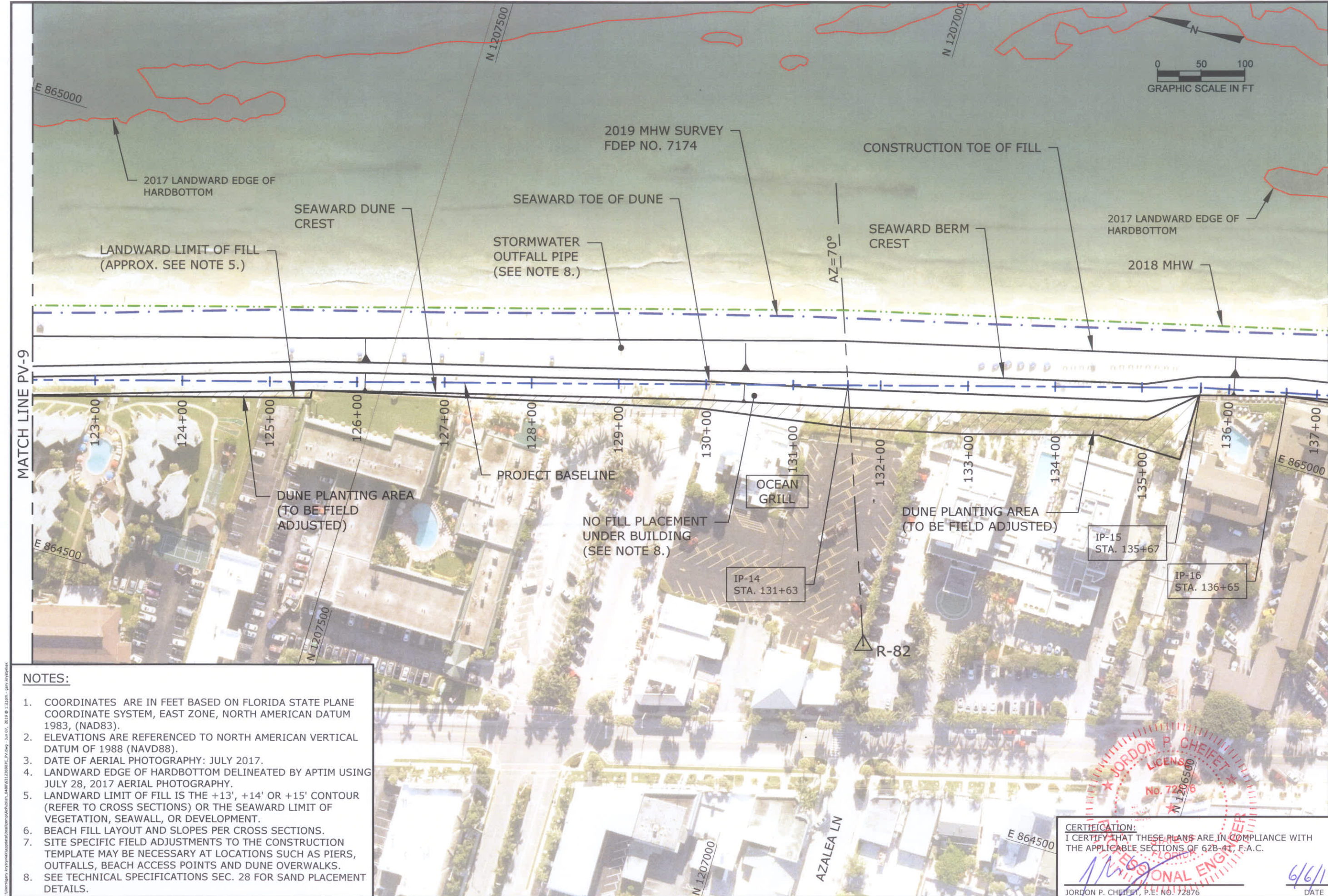
SECTOR 5  
BEACH AND DUNE RESTORATION PROJECT  
CONSTRUCTION PLANS  
INDIAN RIVER COUNTY, FLORIDA  
PLAN VIEW

DRAWING NO.  
**PV-9**

SHEET 11 OF 21

C:\Users\jordan\Documents\aptime\aptime\631236907\Drawings\11-PV-9.dwg - Jun 07, 2019 @ 1:21pm - jordan





- NOTES:**
- COORDINATES ARE IN FEET BASED ON FLORIDA STATE PLANE COORDINATE SYSTEM, EAST ZONE, NORTH AMERICAN DATUM 1983, (NAD83).
  - ELEVATIONS ARE REFERENCED TO NORTH AMERICAN VERTICAL DATUM OF 1988 (NAVD88).
  - DATE OF AERIAL PHOTOGRAPHY: JULY 2017.
  - LANDWARD EDGE OF HARDBOTTOM DELINEATED BY APTIM USING JULY 28, 2017 AERIAL PHOTOGRAPHY.
  - LANDWARD LIMIT OF FILL IS THE +13', +14' OR +15' CONTOUR (REFER TO CROSS SECTIONS) OR THE SEAWARD LIMIT OF VEGETATION, SEAWALL, OR DEVELOPMENT.
  - BEACH FILL LAYOUT AND SLOPES PER CROSS SECTIONS.
  - SITE SPECIFIC FIELD ADJUSTMENTS TO THE CONSTRUCTION TEMPLATE MAY BE NECESSARY AT LOCATIONS SUCH AS PIERS, OUTFALLS, BEACH ACCESS POINTS AND DUNE OVERWALKS.
  - SEE TECHNICAL SPECIFICATIONS SEC. 28 FOR SAND PLACEMENT DETAILS.

**CERTIFICATION:**  
I CERTIFY THAT THESE PLANS ARE IN COMPLIANCE WITH THE APPLICABLE SECTIONS OF 62B-41, F.A.C.

**JORDON P. CHEIFET, P.E. NO. 72876**

**6/6/19**

**DATE**

**APTIM ENVIRONMENTAL & INFRASTRUCTURE, LLC**  
2481 N.W. BOCA RATON BOULEVARD  
BOCA RATON, FLORIDA 33431  
www.APTIM.com  
PH. (561) 391-8102  
FAX (561) 391-8116  
C.O.A. FL. #9317  
C.O.A. LA. #2531

REVISIONS	Checked by:	Reviewed by:	Submitted by:	Comm. No.:	Date
	JC	JC	JC	631236907	

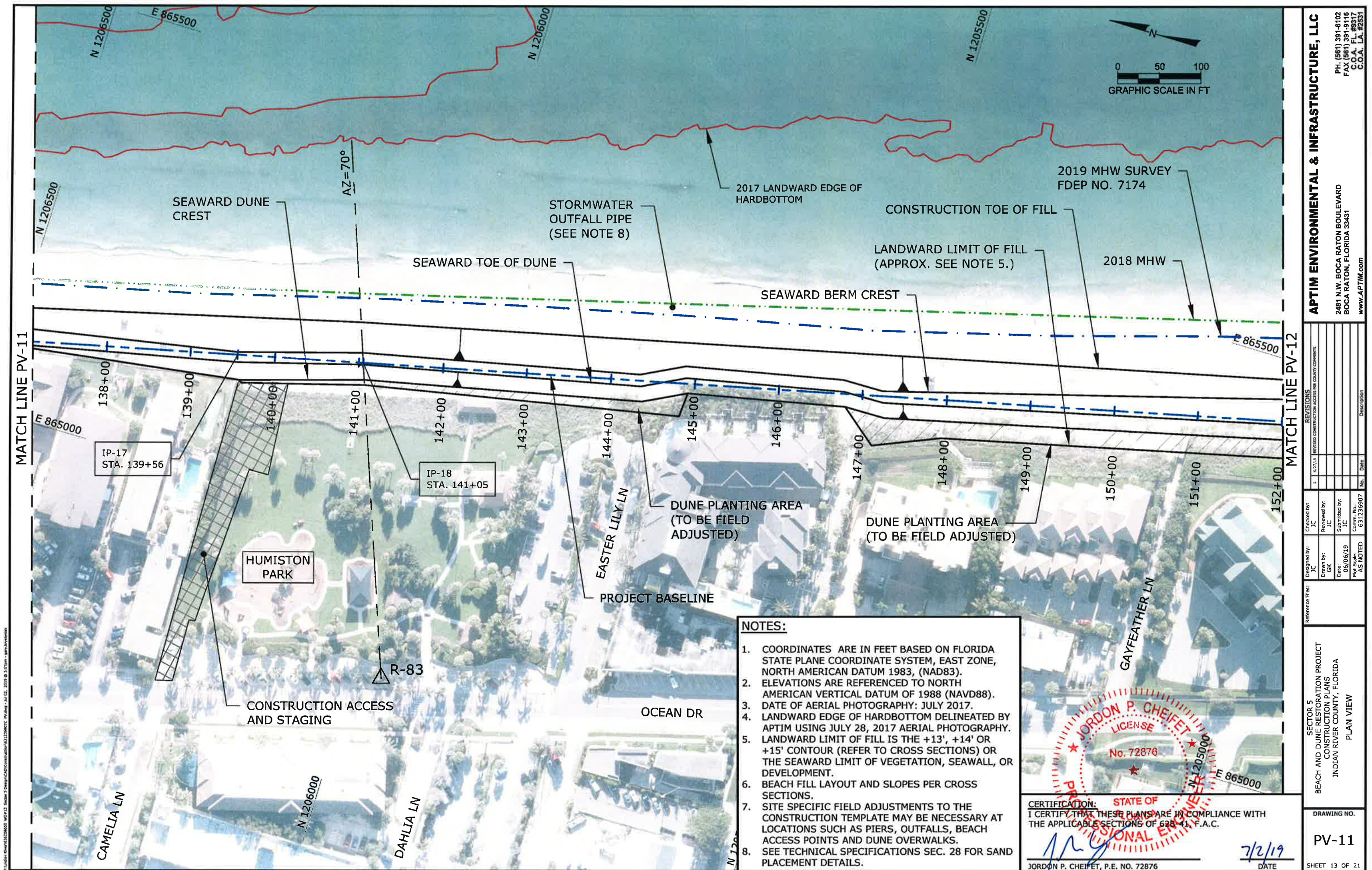
DESIGNED BY: JC  
DRAWN BY: GK  
DATE: 06/06/19  
PILOT SCALE: AS NOTED

SECTOR 5  
BEACH AND DUNE RESTORATION PROJECT  
CONSTRUCTION PLANS  
INDIAN RIVER COUNTY, FLORIDA  
PLAN VIEW

DRAWING NO. **PV-10**

SHEET 12 OF 21





1. COORDINATES ARE IN FEET BASED ON FLORIDA STATE PLANE COORDINATE SYSTEM, EAST ZONE, NORTH AMERICAN DATUM 1983, (NAD83).

2. ELEVATIONS ARE REFERENCED TO NORTH AMERICAN VERTICAL DATUM OF 1988 (NAVD88).

3. DATE OF AERIAL PHOTOGRAPHY: JULY 2017.

4. LANDWARD EDGE OF HARDBOTTOM DELINEATED BY APTIM USING JULY 28, 2017 AERIAL PHOTOGRAPHY.

5. LANDWARD LIMIT OF FILL IS THE +13', +14' OR +15' CONTOUR (REFER TO CROSS SECTIONS) OR THE SEAWARD LIMIT OF VEGETATION, SEAWALL, OR DEVELOPMENT.

6. BEACH FILL LAYOUT AND SLOPES PER CROSS SECTIONS.

7. SITE SPECIFIC FIELD ADJUSTMENTS TO THE CONSTRUCTION TEMPLATE MAY BE NECESSARY AT LOCATIONS SUCH AS PIERS, OUTFALLS, BEACH ACCESS POINTS AND DUNE OVERWALKS.

8. SEE TECHNICAL SPECIFICATIONS SEC. 28 FOR SAND PLACEMENT DETAILS.

SECTOR 5  
BEACH AND DUNE RESTORATION PROJECT  
CONSTRUCTION PLANS  
INDIAN RIVER COUNTY, FLORIDA  
PLAN VIEW

DRAWING NO.  
**PV-11**

SHEET 13 OF 21

APTIM ENVIRONMENTAL & INFRASTRUCTURE, LLC  
2481 N.W. BOCA RATON BOULEVARD  
BOCA RATON, FLORIDA 33431  
PH: (561) 391-8102  
FAX: (561) 391-9116  
C.O.A. FL. #9317  
C.O.A. LA. #2531  
www.APTIM.com

REVISIONS  
1. 6/27/19 INVITED CONSTRUCTION ACCESS PER COUNTY COMMENTS

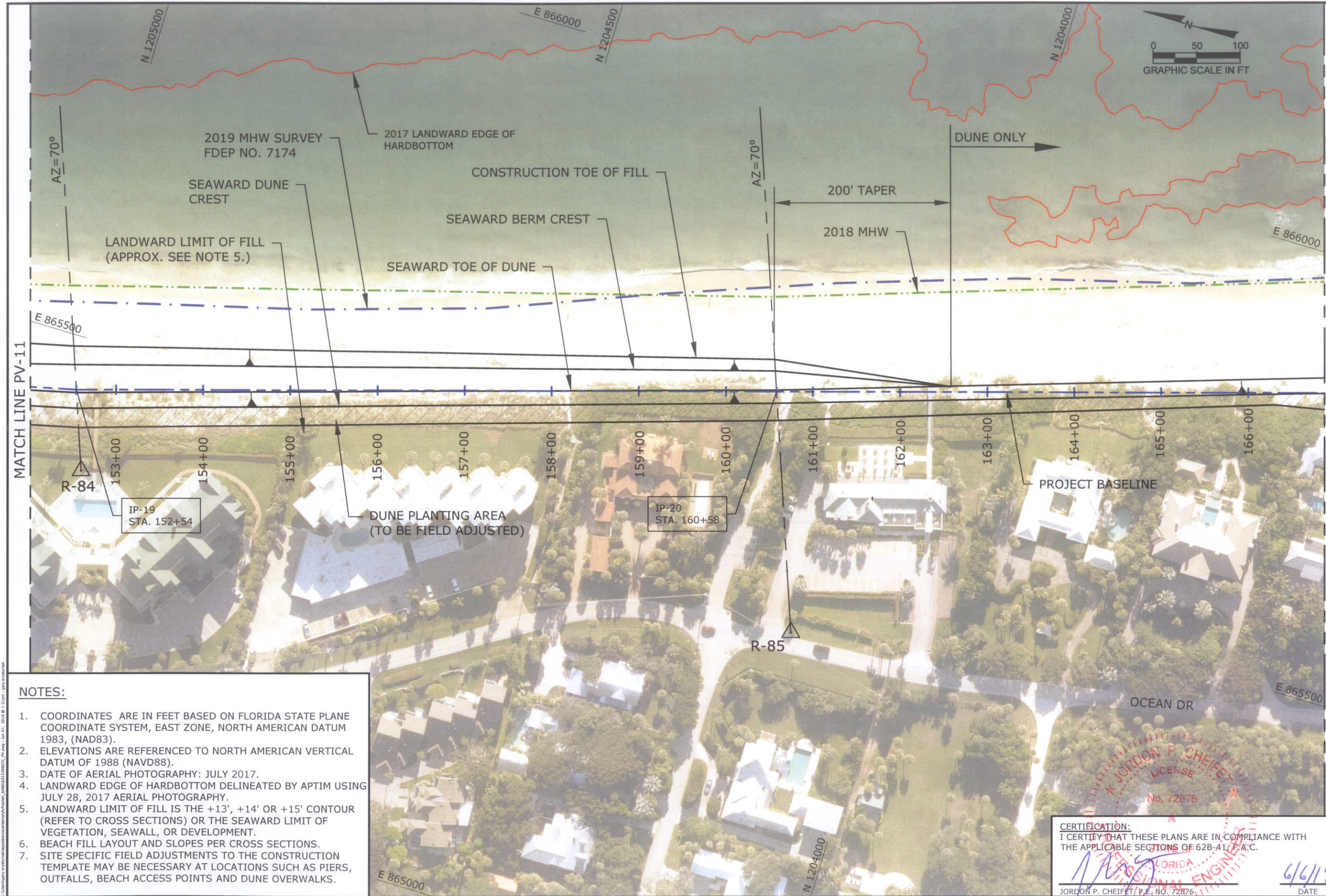
DESIGNED BY: JC  
DRAWN BY: GK  
DATE: 06/06/19  
PROJECT SCALE: AS NOTED

CHECKED BY: JC  
REVIEWED BY: JC  
SUBMITTED BY: JC  
CONTR. NO.: 631236907

CERTIFICATION:  
I CERTIFY THAT THESE PLANS ARE IN COMPLIANCE WITH THE APPLICABLE SECTIONS OF 62B-41, F.A.C.

JORDAN P. CHEIFET, P.E. NO. 72876  
7/2/19  
DATE





- NOTES:**
- COORDINATES ARE IN FEET BASED ON FLORIDA STATE PLANE COORDINATE SYSTEM, EAST ZONE, NORTH AMERICAN DATUM 1983, (NAD83).
  - ELEVATIONS ARE REFERENCED TO NORTH AMERICAN VERTICAL DATUM OF 1988 (NAVD88).
  - DATE OF AERIAL PHOTOGRAPHY: JULY 2017.
  - LANDWARD EDGE OF HARDBOTTOM DELINEATED BY APTIM USING JULY 28, 2017 AERIAL PHOTOGRAPHY.
  - LANDWARD LIMIT OF FILL IS THE +13', +14' OR +15' CONTOUR (REFER TO CROSS SECTIONS) OR THE SEAWARD LIMIT OF VEGETATION, SEAWALL, OR DEVELOPMENT.
  - BEACH FILL LAYOUT AND SLOPES PER CROSS SECTIONS.
  - SITE SPECIFIC FIELD ADJUSTMENTS TO THE CONSTRUCTION TEMPLATE MAY BE NECESSARY AT LOCATIONS SUCH AS PIERS, OUTFALLS, BEACH ACCESS POINTS AND DUNE OVERWALKS.

**CERTIFICATION:**  
I CERTIFY THAT THESE PLANS ARE IN COMPLIANCE WITH THE APPLICABLE SECTIONS OF 62B-41, F.A.C.

JORDON P. CHEIFET, P.E. NO. 72876  
DATE 6/6/19

**APTIM ENVIRONMENTAL & INFRASTRUCTURE, LLC**  
2481 N.W. BOCA RATON BOULEVARD  
BOCA RATON, FLORIDA 33431  
www.aptim.com

PH: (561) 391-8102  
FAX: (561) 391-9116  
C.O.A. #9317  
C.O.A. #2531

REVISIONS	Checked by:	Designed by:	Reference Files:
	JC	JC	
	Reviewed by:	Drawn by:	
	JC	GK	
	Submitted by:	Date:	
	JC	06/06/19	
	Drawn No.:	Rev. No.:	
	631236907	AS NOTED	

SECTOR 5  
BEACH AND DUNE RESTORATION PROJECT  
CONSTRUCTION PLANS  
INDIAN RIVER COUNTY, FLORIDA  
PLAN VIEW

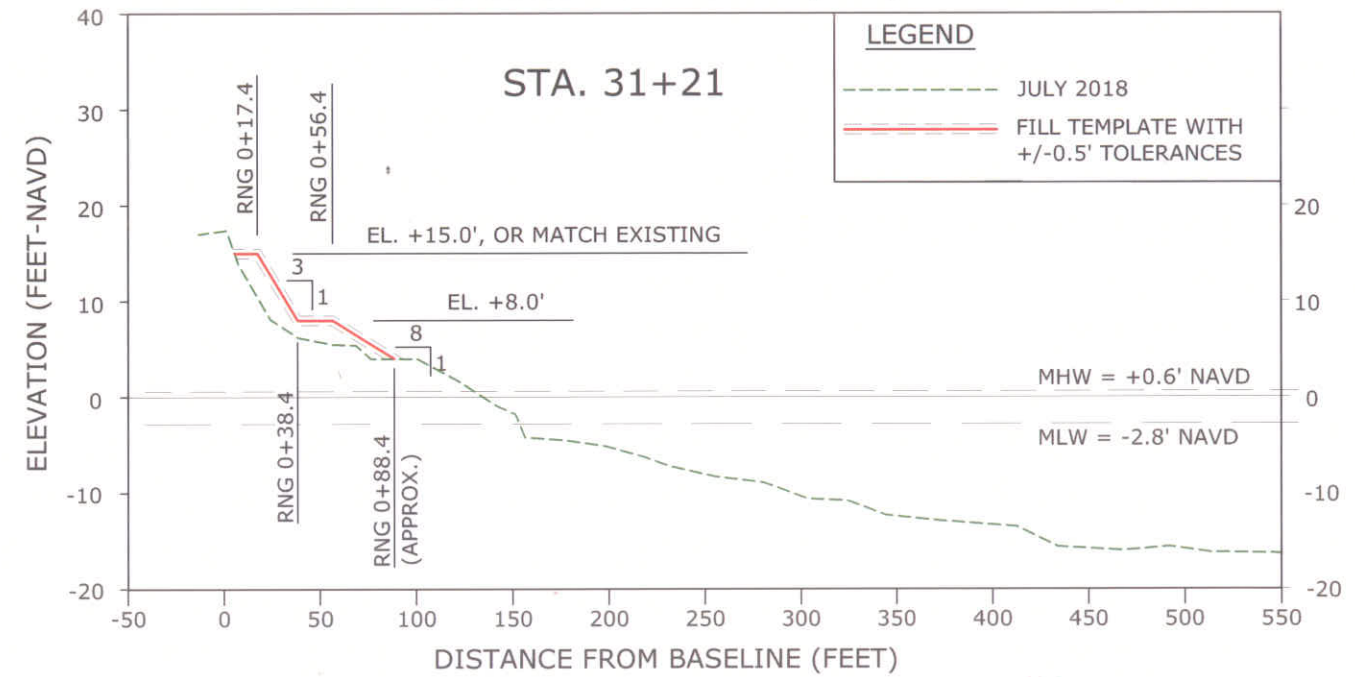
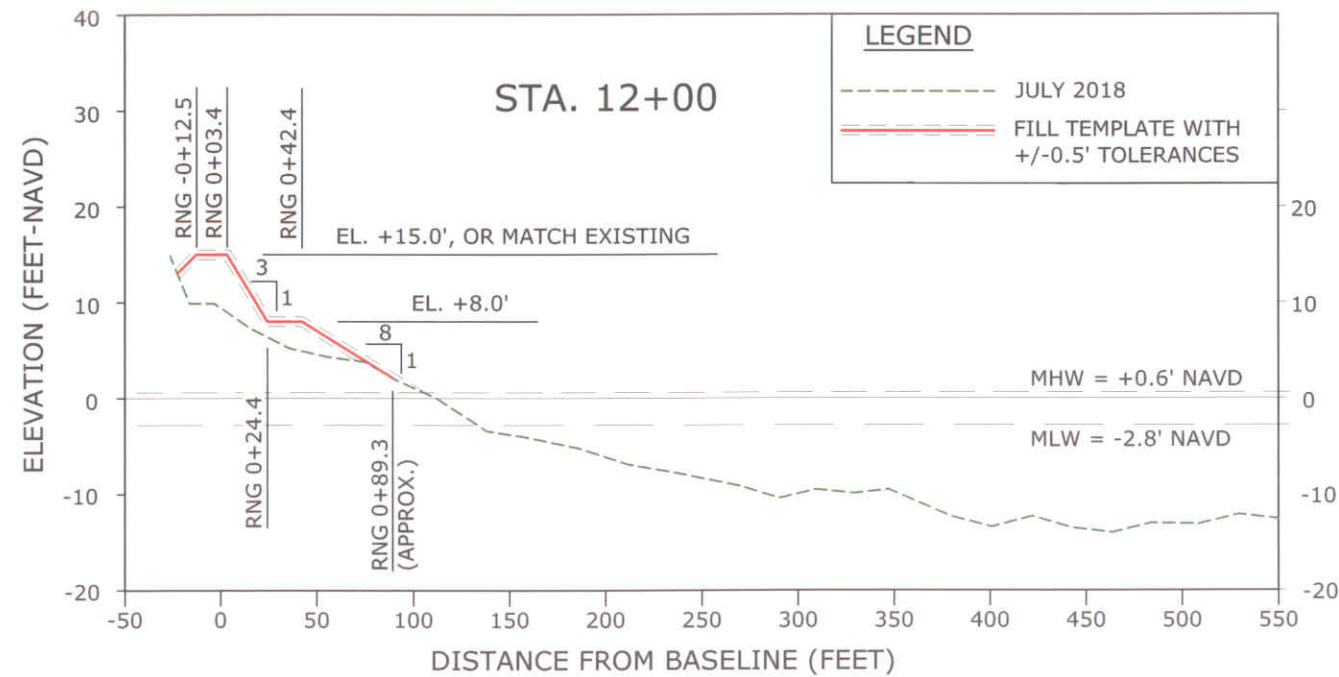
DRAWING NO.  
**PV-12**

SHEET 14 OF 21









1. ELEVATIONS ARE REFERENCED TO NORTH AMERICAN VERTICAL DATUM OF 1988 (NAVD88).
2. LANDWARD EDGE OF HARDBOTTOM DELINEATED BY APTIM USING JULY 28 2017 AERIAL PHOTOGRAPHY.
3. BEACH PROFILE SURVEYS COLLECTED BY MORGAN AND EKLUND, INC. JULY 2018.
4. INTERSECTION OF DUNE CREST WITH EXISTING GRADE TO BE FIELD DETERMINED. IF NECESSARY, SLOPE DOWN NO STEEPER THAN 1V:5H.

JORDON P. CHEFET, P.E. NO. 72876

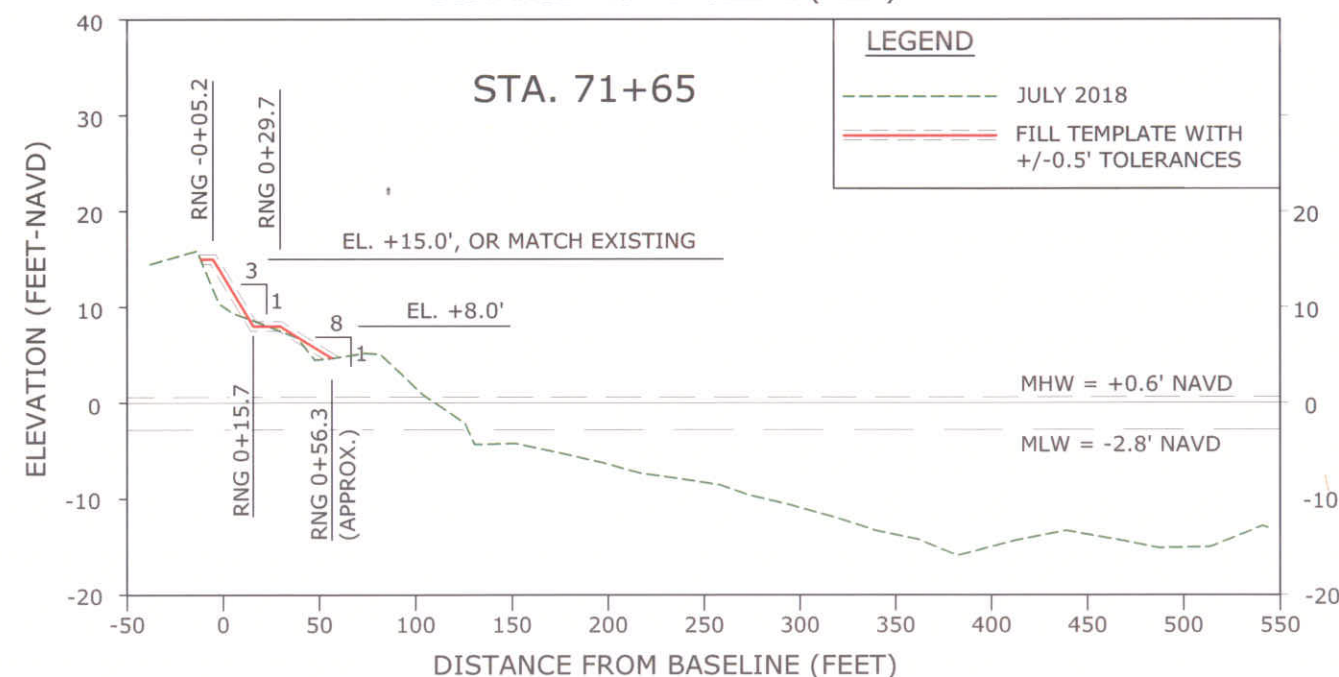
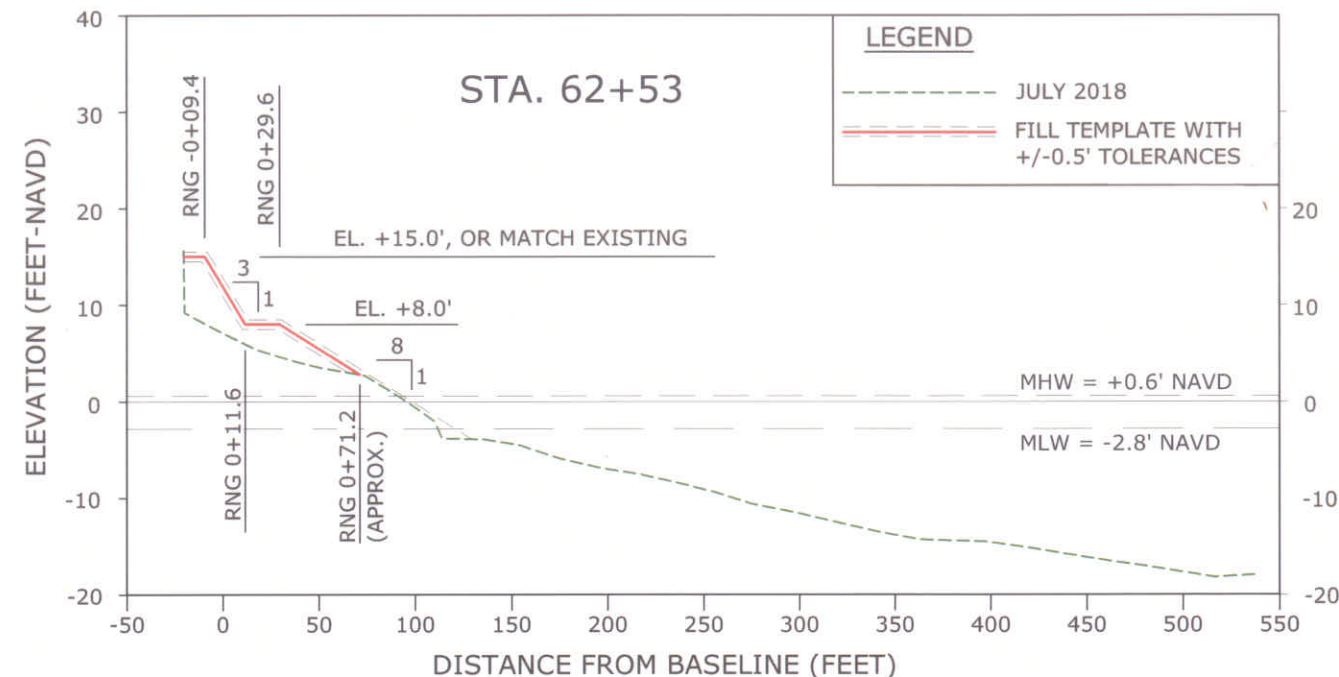
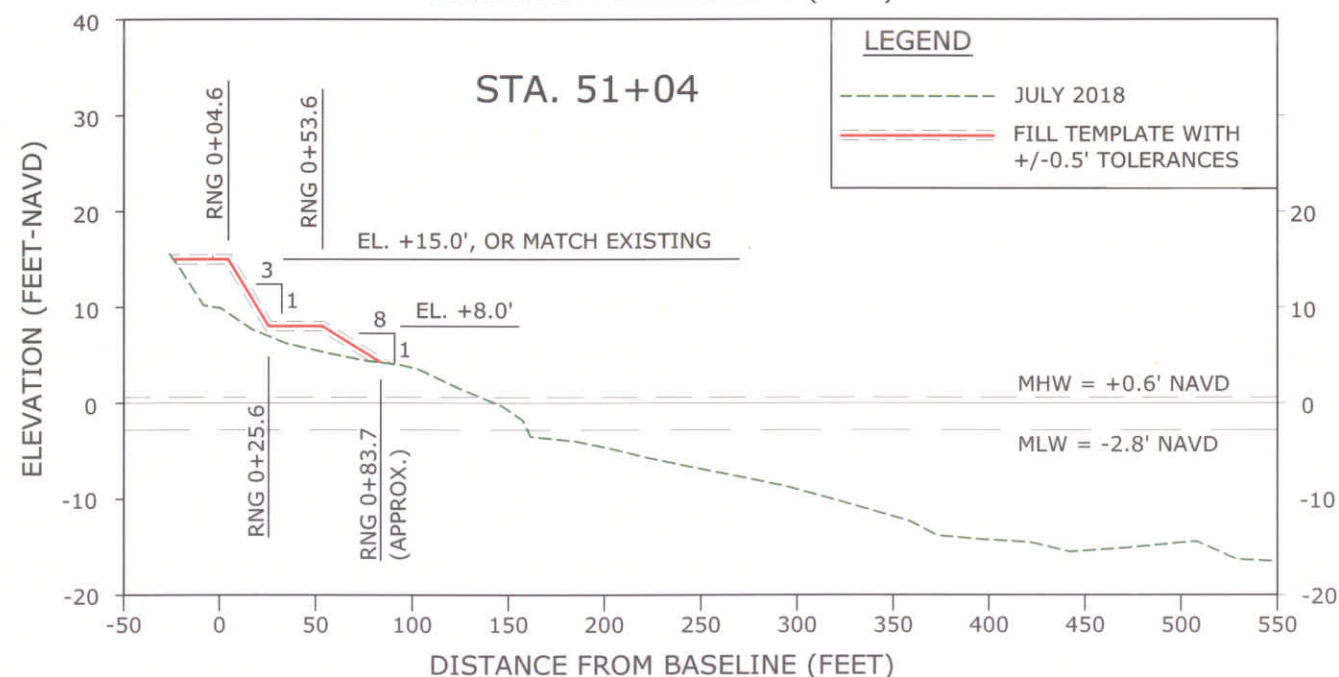
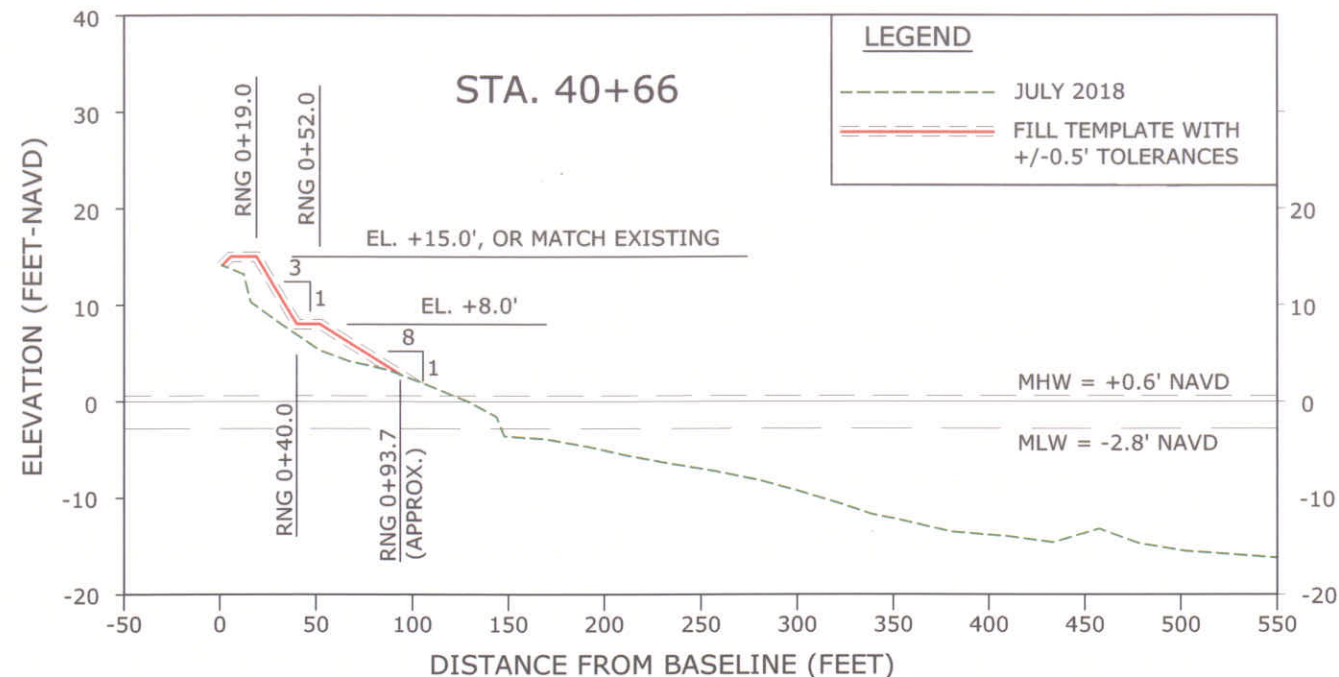
6/6/19  
DATE

DRAWING NO.

XS-1

SHEET 16 OF 21





- NOTES:
- ELEVATIONS ARE REFERENCED TO NORTH AMERICAN VERTICAL DATUM OF 1988 (NAVD88).
  - LANDWARD EDGE OF HARDBOTTOM DELINEATED BY APTIM USING JULY 28 2017 AERIAL PHOTOGRAPHY.
  - BEACH PROFILE SURVEYS COLLECTED BY MORGAN AND EKLUND, INC. JULY 2018.
  - INTERSECTION OF DUNE CREST WITH EXISTING GRADE TO BE FIELD DETERMINED. IF NECESSARY, SLOPE DOWN NO STEEPER THAN 1V:5H.

JORDON P. CHEIFET  
LICENSE  
No. 72876  
FLORIDA  
CIVIL ENGINEER

CERTIFICATION:  
I CERTIFY THAT THESE PLANS ARE IN COMPLIANCE WITH  
THE APPLICABLE SECTIONS OF 62B-41, F.A.C.

JORDON P. CHEIFET, P.E., NO. 72876

6/6/19

DATE

APTIM ENVIRONMENTAL & INFRASTRUCTURE, LLC

2481 N.W. BOCA RATON BOULEVARD  
BOCA RATON, FLORIDA 33431  
www.APTIM.com

PH: (561) 391-8102  
FAX: (561) 391-9116  
C.O.A. #9317  
C.O.A. #2531

REVISIONS	Checked by:	Reviewed by:	Submitted by:	Contract No.:	Date
	JC	JC	JC	631236907	

Reference Files:

Designed by: JC

Drawn by: GK

Date: 06/06/19

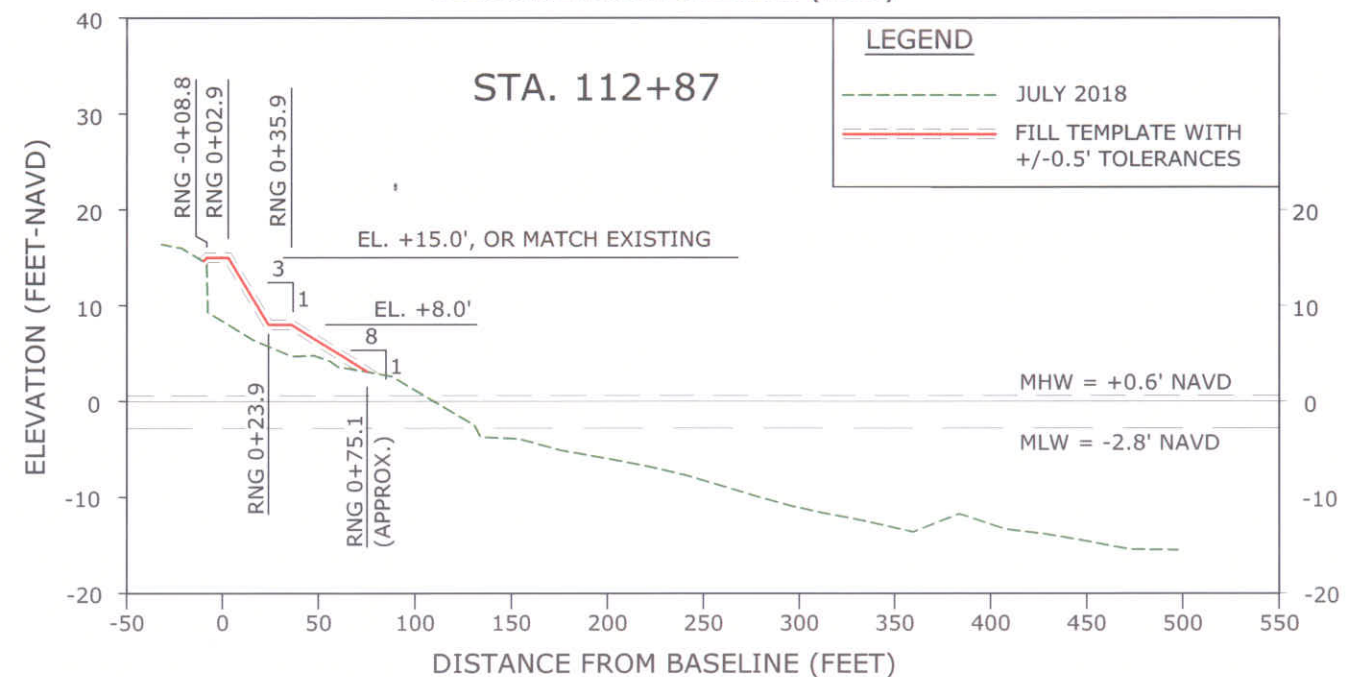
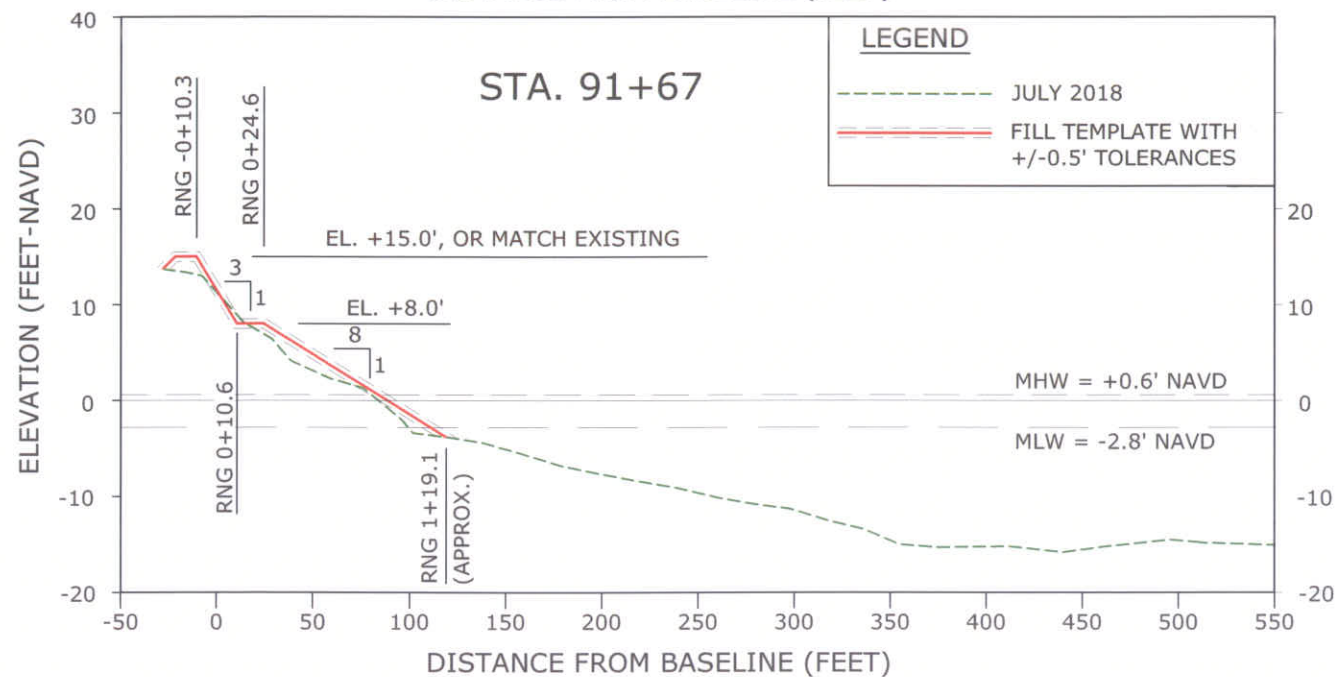
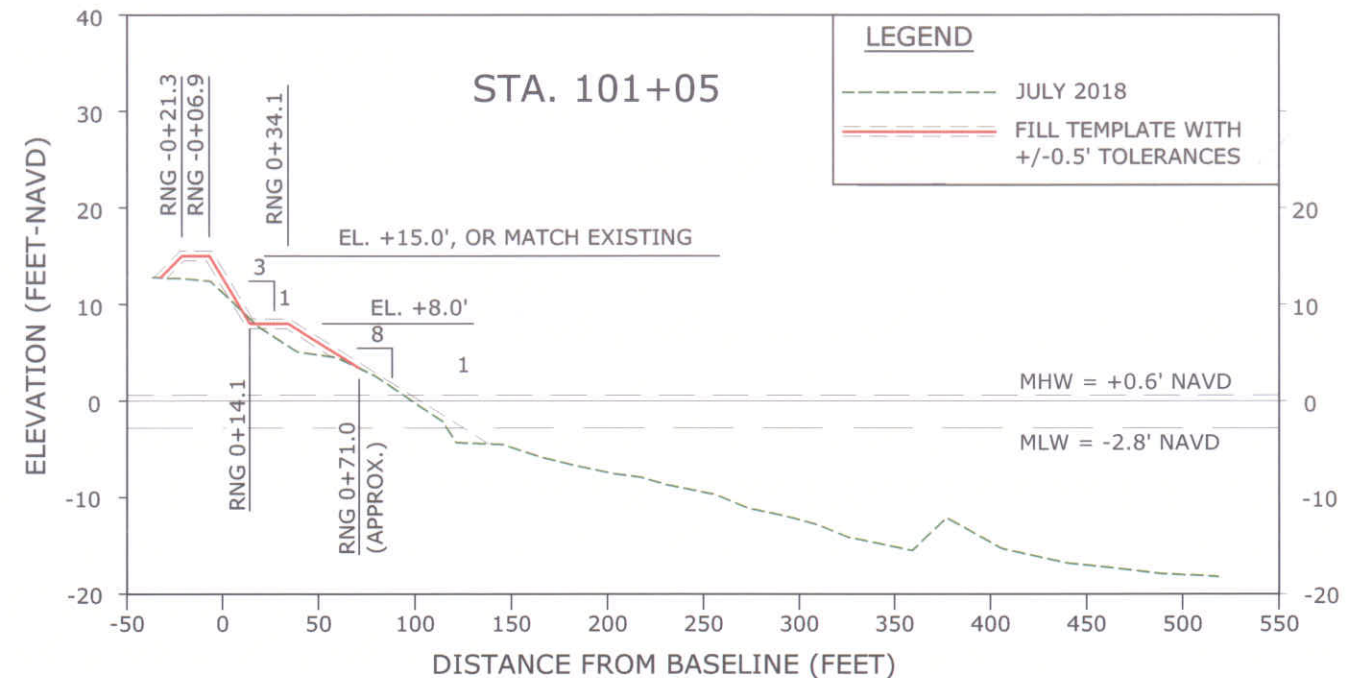
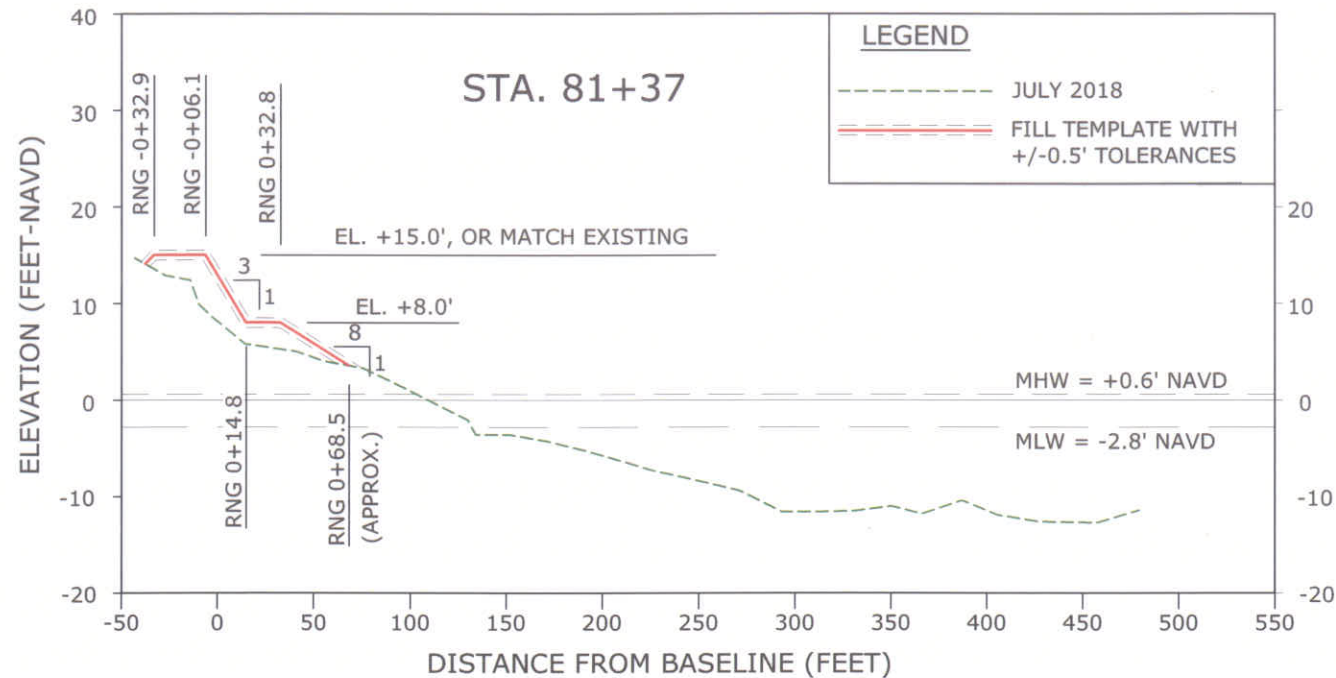
Plot Scale: AS NOTED

SECTOR 5  
BEACH AND DUNE RESTORATION PROJECT  
CONSTRUCTION PLANS  
INDIAN RIVER COUNTY, FLORIDA  
CROSS SECTIONS

DRAWING NO.  
XS-2

SHEET 17 OF 21





NOTES:

- ELEVATIONS ARE REFERENCED TO NORTH AMERICAN VERTICAL DATUM OF 1988 (NAVD88).
- LANDWARD EDGE OF HARDBOTTOM DELINEATED BY APTIM USING JULY 28 2017 AERIAL PHOTOGRAPHY.
- BEACH PROFILE SURVEYS COLLECTED BY MORGAN AND EKLUND, INC. JULY 2018.
- INTERSECTION OF DUNE CREST WITH EXISTING GRADE TO BE FIELD DETERMINED. IF NECESSARY, SLOPE DOWN NO STEEPER THAN 1V:5H.

CERTIFICATION:  
I CERTIFY THAT THESE PLANS ARE IN COMPLIANCE WITH  
THE APPLICABLE SECTIONS OF 62B-41, F.A.C.

JORDON P. CHEIFET, P.E. NO. 72876

DATE

APTIM ENVIRONMENTAL & INFRASTRUCTURE, LLC

PH. (561) 391-8102  
FAX (561) 391-9116  
C.O.A. FL #9317  
C.O.A. LA #2531

2481 N.W. BOCA RATON BOULEVARD  
BOCA RATON, FLORIDA 33431  
www.APTIM.com

REVISIONS	No.	Date	Description

Checked by:	JC
Reviewed by:	JC
Submitted by:	JC
Com. No.	631236907
AS NOTED	

Designed by:	JC
Drawn by:	GK
Date:	06/06/19
Proj. No.	631236907

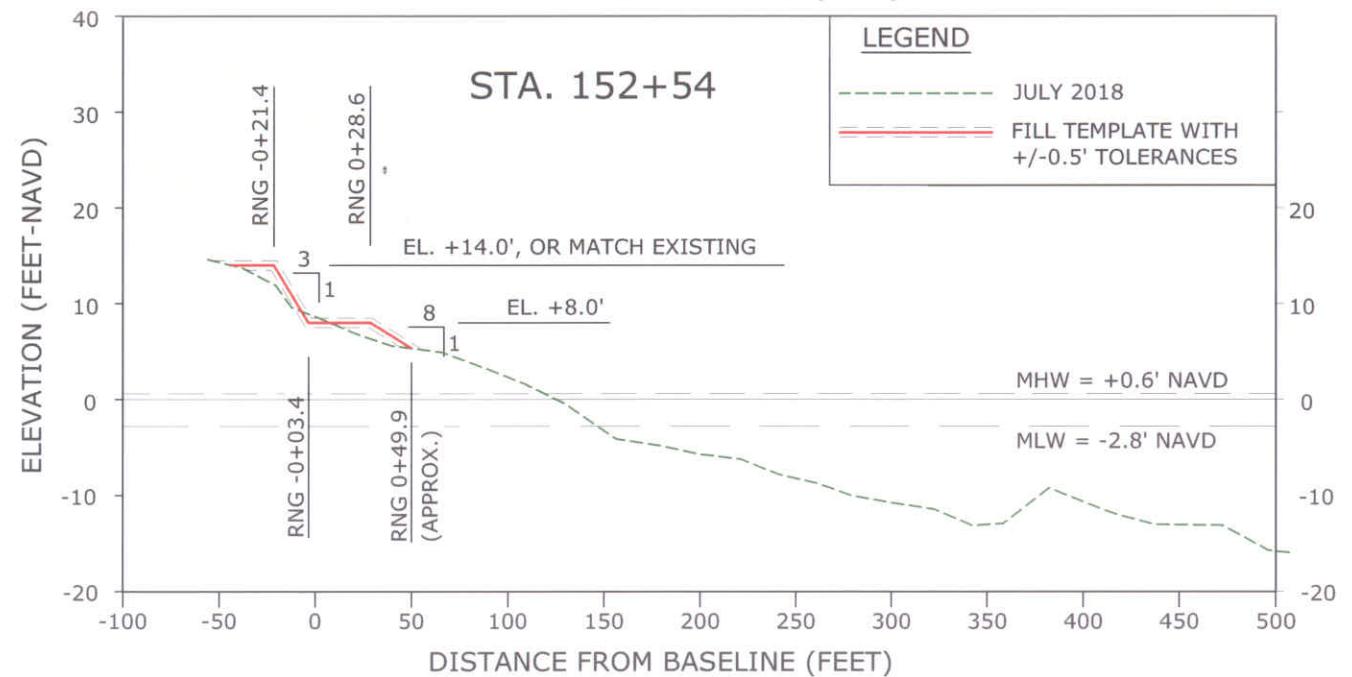
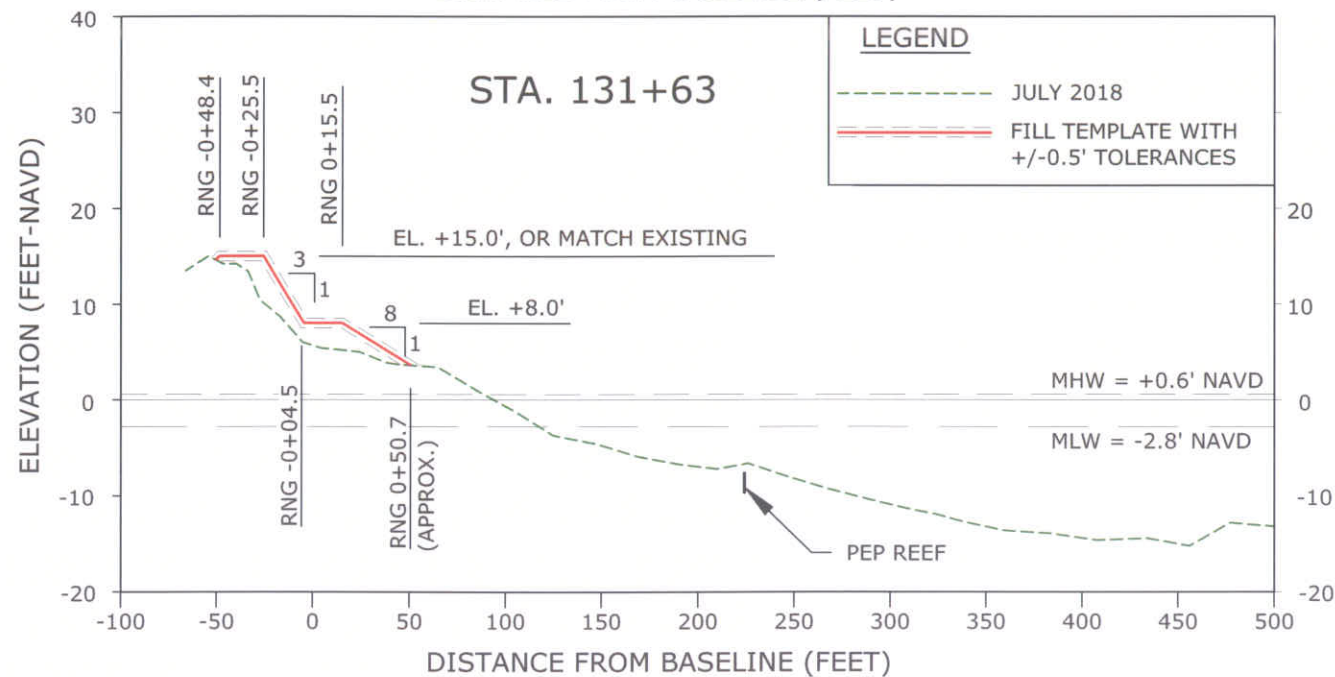
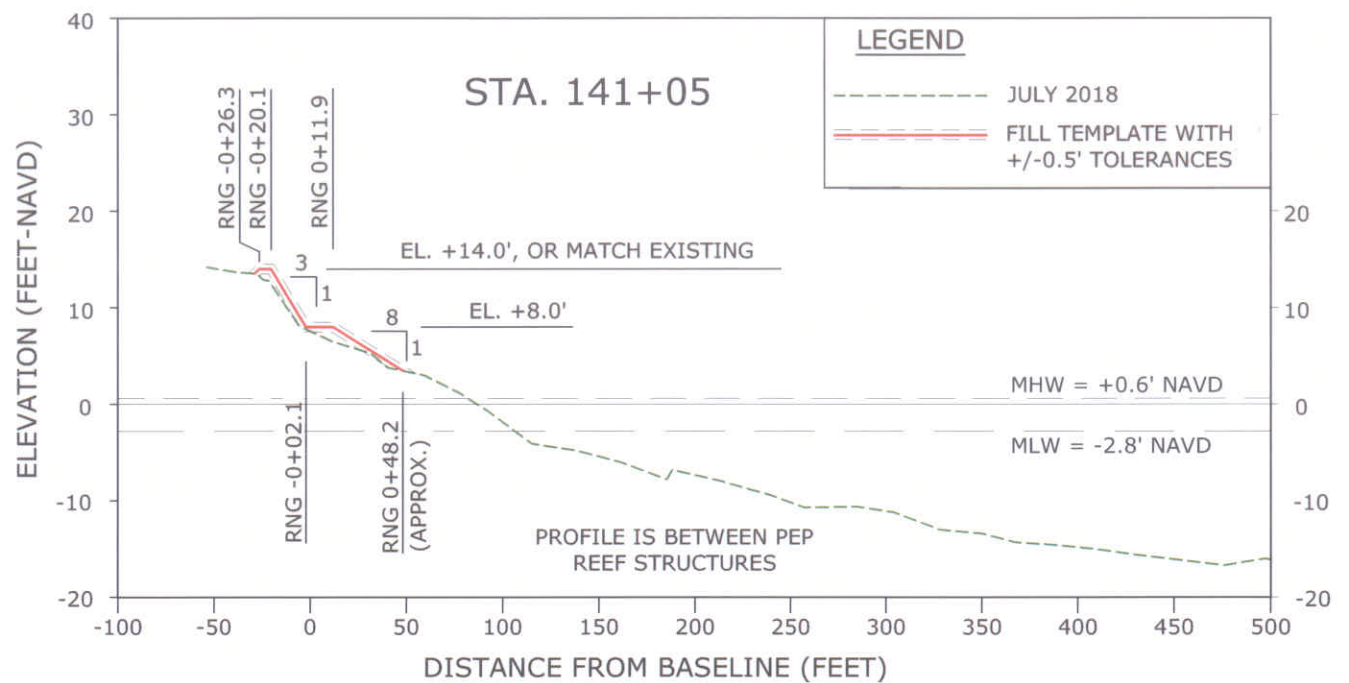
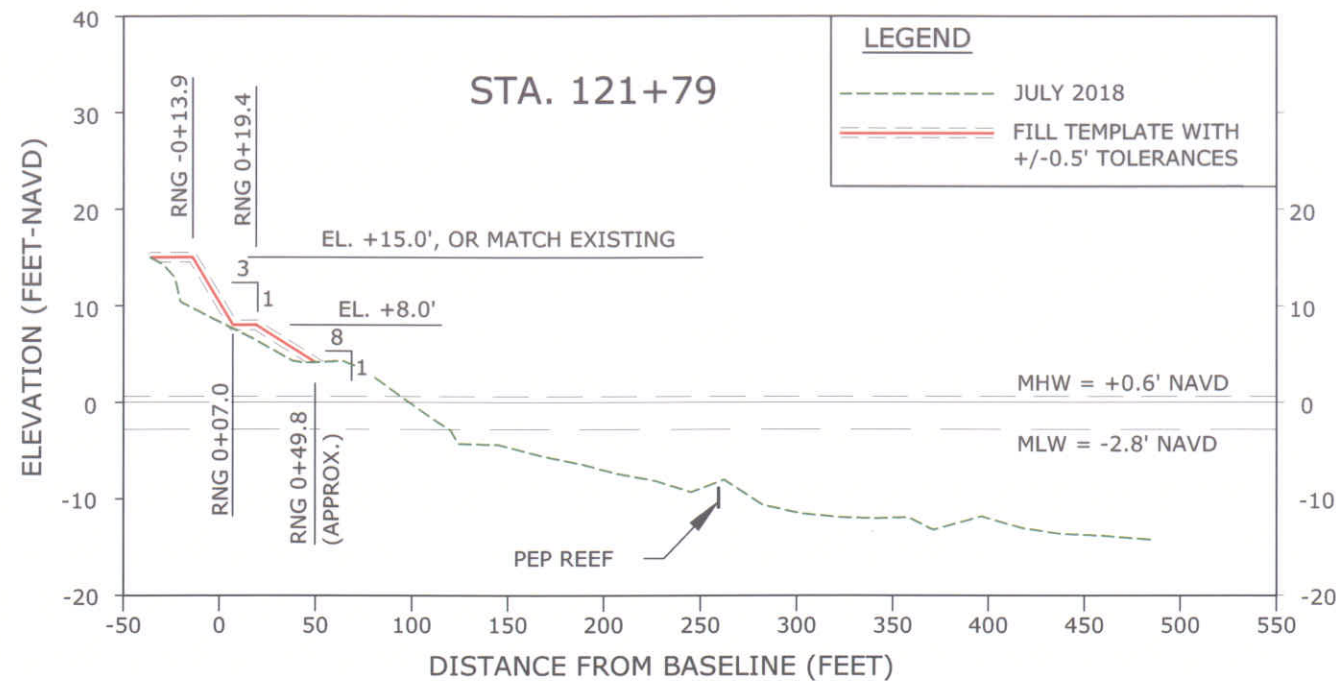
SECTOR 5  
BEACH AND DUNE RESTORATION PROJECT  
CONSTRUCTION PLANS  
INDIAN RIVER COUNTY, FLORIDA  
CROSS SECTIONS

DRAWING NO.

XS-3

SHEET 18 OF 21





**NOTES:**

- ELEVATIONS ARE REFERENCED TO NORTH AMERICAN VERTICAL DATUM OF 1988 (NAVD88).
- LANDWARD EDGE OF HARDBOTTOM DELINEATED BY APTIM USING JULY 28 2017 AERIAL PHOTOGRAPHY.
- BEACH PROFILE SURVEYS COLLECTED BY MORGAN AND EKLUND, INC. JULY 2018.
- INTERSECTION OF DUNE CREST WITH EXISTING GRADE TO BE FIELD DETERMINED. IF NECESSARY, SLOPE DOWN NO STEEPER THAN 1V:5H.

CERTIFICATION:  
I CERTIFY THAT THESE PLANS ARE IN COMPLIANCE WITH  
THE APPLICABLE SECTIONS OF 62B-41, F.A.C.

JORDON P. CHEIFET, P.E. No. 72876

DATE 6/6/19

REVISIONS		No.	Date	Description

Designed by:	JC
Drawn by:	GK
Date:	06/06/19
Reviewed by:	JC
Submitted by:	JC
Proj. No.:	631236907
AS NOTED	

Reference Files:	
------------------	--

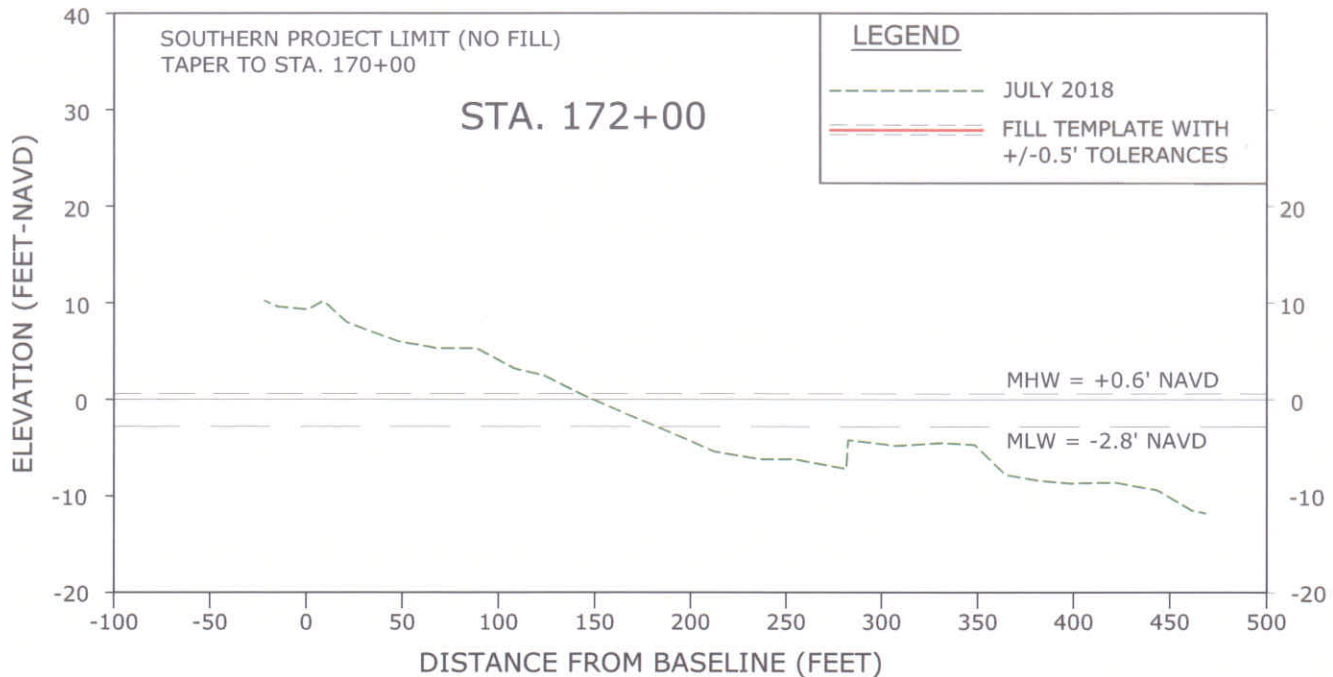
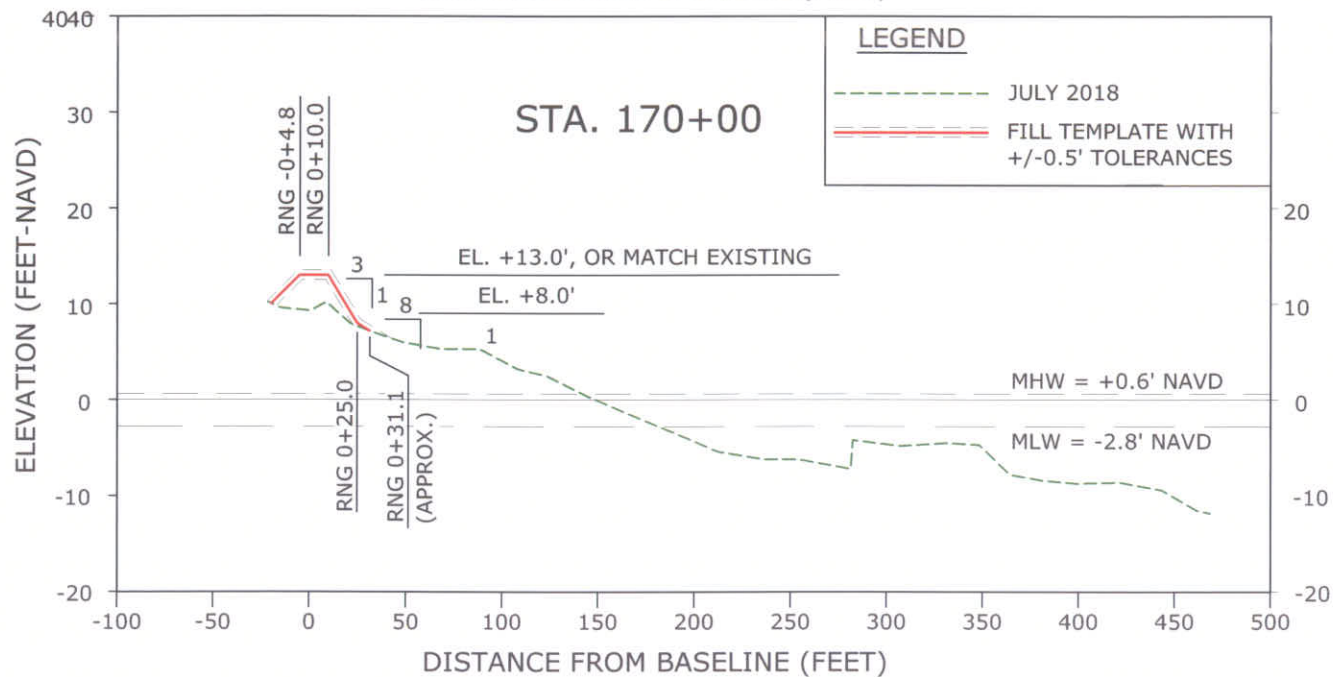
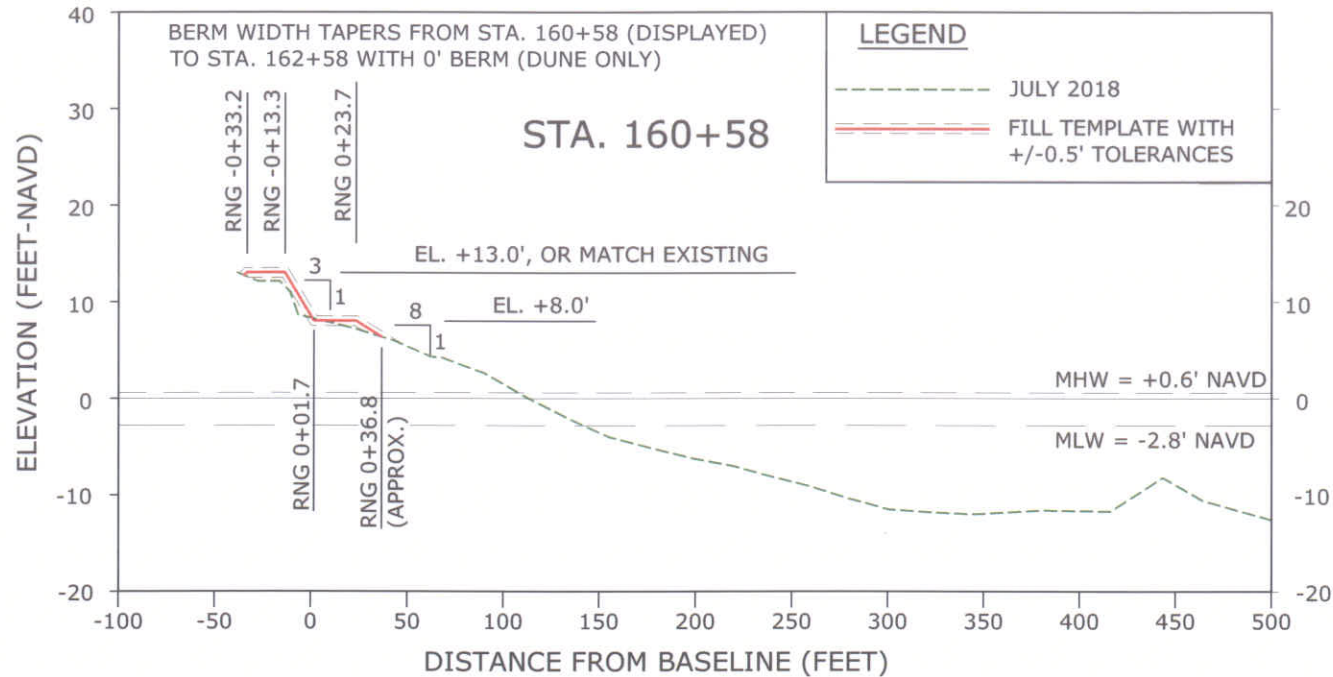
SECTOR 5
BEACH AND DUNE RESTORATION PROJECT
CONSTRUCTION PLANS
INDIAN RIVER COUNTY, FLORIDA
CROSS SECTIONS

DRAWING NO.

XS-4

SHEET 19 OF 21





NOTES:

- ELEVATIONS ARE REFERENCED TO NORTH AMERICAN VERTICAL DATUM OF 1988 (NAVD88).
- LANDWARD EDGE OF HARDBOTTOM DELINEATED BY APTIM USING JULY 28 2017 AERIAL PHOTOGRAPHY.
- BEACH PROFILE SURVEYS COLLECTED BY MORGAN AND EKLUND, INC. JULY 2018.
- INTERSECTION OF DUNE CREST WITH EXISTING GRADE TO BE FIELD DETERMINED. IF NECESSARY, SLOPE DOWN NO STEEPER THAN 1V:5H.

**JORDON P. CHEIFET**  
LICENSE  
No. 72878  
FLORIDA  
PROFESSIONAL ENGINEER

CERTIFICATION:  
I CERTIFY THAT THESE PLANS ARE IN COMPLIANCE WITH  
THE APPLICABLE SECTIONS OF 62B-41, F.A.C.

JORDON P. CHEIFET, P.E. NO. 72878

6/6/19

DATE

**APTIM ENVIRONMENTAL & INFRASTRUCTURE, LLC**  
2481 N.W. BOCA RATON BOULEVARD  
BOCA RATON, FLORIDA 33431  
www.APTIM.com

PH. (561) 391-8102  
FAX (561) 391-9116  
C.O.A. FL. #9317  
C.O.A. LA. #2531

REVISIONS	Checked by:	Reviewed by:	Submitted by:	Comm. No.	No.	Date	Description
	JC	JC	JC	631236907			

DESIGNED BY: JC  
DRAWN BY: GK  
DATE: 06/06/19  
PLG SCALE: AS NOTED

SECTOR 5  
BEACH AND DUNE RESTORATION PROJECT  
CONSTRUCTION PLANS  
INDIAN RIVER COUNTY, FLORIDA  
CROSS SECTIONS

DRAWING NO.  
**XS-5**

SHEET 20 OF 21



