

BIM 360/1850.01 OUSD_San Antonio Access Improvements/San Antonio Access Improvements.rvt

LEGEND

Legend table with symbols and descriptions: PROPERTY LINE, SLOPING SURFACE, DETAIL NUMBER, SECTION NUMBER, ELEVATION NUMBER, CONCRETE, SOIL, PLYWOOD, STEEL, WOOD BLOCKING, WOOD CONTINUOUS MEMBER, WORK POINT, KEYNOTE, DOOR NUMBER REFERENCE, WINDOW NUMBER REFERENCE, WALL TYPE REFERENCE, SIGN TYPE REFERENCE, DIMENSIONS TO FACE OF STUD, DIMENSIONS TO CENTERLINE, DIMENSIONS TO F.O. FINISH OR CLEAR DIMENSION, SPOT ELEVATION.

ABBREVIATIONS

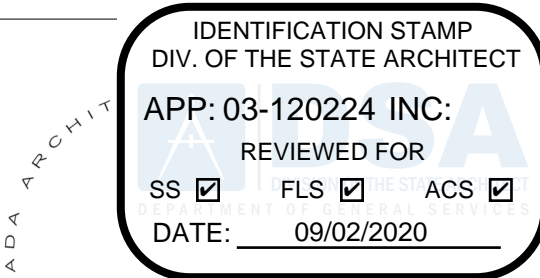
Abbreviations table with two columns: Abbreviation and Full Name. Includes symbols like Ø, &, #, A.B., ABV., ACP, A.D., ADJ., A.F.F., A.F.G., ALUM., BLDG., BLKG., BM., B.O.B., BOT., BTWN., CAB., CALIF., C.F.O.I., C.I.P., C.J., C.J., C.L., CLG., CLR., CMU, C.O., COL., COMP., CONC., CONSTR., CONT., C.T., DBL., DF, D.F., DFCI, D.G., DIM., DN, DR., DWG, (E), EA, EJ, ELECT., ELEV., EQ, EQUIP., EXIST., EXT., FD, FDN., F.E., F.E.C., F.F., FIN., FLR., F.O.C., F.O.F., F.O.S., FRAM'G, FRP, FT., FTG., F.V., GA., GALV., GWB, GYP. BD., HDG, HDR., HORIZ., H.M.

DEMOLITION NOTES

- 1. IDENTIFY ALL DAMAGED ELEMENTS DESIGNATED TO REMAIN OR BE RELOCATED. REQUEST CLARIFICATION FROM THE ARCHITECT BEFORE PROCEEDING WITH DEMOLITION WORK.
2. GENERAL CONTRACTOR IS RESPONSIBLE FOR REVIEWING AND VERIFYING DEMOLITION PLANS IN RELATION TO STRUCTURAL AND CONSTRUCTION DRAWINGS.
3. SEE MECHANICAL, PLUMBING, AND ELECTRICAL DEMOLITION PLANS FOR ADDITIONAL WORK.
4. THE CONTRACTOR SHALL VERIFY LOCATION OF ALL UTILITIES PRIOR TO DEMOLITION.
5. THE GENERAL CONTRACTOR SHALL ERRECT ALL NECESSARY TEMPORARY SOLID AND/OR PLASTIC DROP CLOTH PARTITIONS TO PROTECT AREAS TO REMAIN WHILE DEMOLITION AND CONSTRUCTION ARE IN PROGRESS.
6. BRACE AND SUPPORT EXISTING WORK PRIOR TO AND DURING DEMOLITION AND NEW WORK.
7. THE CONTRACTOR SHALL PERFORM ALL DEMOLITION WORK REQUIRED INCLUDING THE REMOVAL AND PROPER DISPOSAL OF ALL DEBRIS.
8. THE OWNER SHALL HAVE FIRST RIGHTS OF REFUSAL FOR ALL DEMOLISHED MATERIALS.
9. THE CONTRACTOR SHALL BE RESPONSIBLE FOR ALL DAMAGE RESULTING FROM DEMOLITION AT NO ADDITIONAL COST TO THE OWNER.
10. CUT EXISTING PORTIONS OF WALLS, FLOORS, CEILING, ETC., WHERE INDICATED AND AS NECESSARY FOR NEW WORK.
11. ALL TRADES CONCERNED SHALL COORDINATE EACH OTHER'S WORKS PRIOR TO AND DURING DEMOLITION.
12. ANY PROJECTING OR SURFACE-MOUNTED ITEMS BEING ABANDONED SHALL BE REMOVED, CAPPED AND CONCEALED BEHIND FINISHED SURFACES.
13. SURFACES WHERE MATERIAL IS REMOVED TO INSTALL NEW WORK OR TO RECEIVE NEW FINISH SHALL BE REPAIRED AND PATCHED TO MATCH ORIGINAL CONDITIONS.
14. ALL EXISTING AREAS TO REMAIN OR NEW CONSTRUCTION WORK THAT ARE DAMAGED SHALL BE PATCHED AS REQUIRED TO MATCH EXISTING ADJACENT AREA IN MATERIAL, FINISH AND COLOR.
15. ALL EQUIPMENT AND MATERIAL WHICH ARE IN OPERATING CONDITION WHEN REMOVED SHALL BE MAINTAINED AS SUCH AND RETURNED TO THE OWNER OR TO BE REINSTALLED WHERE INDICATED.
16. DEMOLISH AND REMOVE WALLS, CEILING AND ALL OTHER ITEMS AND EQUIPMENT NOT REQUIRED TO REMAIN OR TO BE REUSED.
17. IN ALL AREAS WHERE DEMOLITION CAUSES UNEVENNESS OR VOIDS IN FLOOR, THE GENERAL CONTRACTOR SHALL PATCH TO LEVEL FLOOR WITH EXISTING SLAB AND/OR REQUIRED SURFACE TO RECEIVE NEW FLOOR FINISH.
18. WHERE DEMOLITION IS REQUIRED TO INSTALL NEW HOLDOWNS OR STRAPS PASSING FROM FLOOR TO FLOOR.
19. CAREFULLY & THOROUGHLY SURVEY EXISTING IRRIGATION SYSTEMS AT AREAS OF TRENCHING PRIOR TO BEGINNING SUCH WORK.
20. ALL TRENCHING OPERATIONS SHALL BE PERFORMED WITH A SPOTTER.

ACCESSIBILITY NOTES

- WALKS AND SIDEWALKS
1. CONTINUOUS SURFACE: WALKS AND SIDEWALKS SUBJECT TO THESE REGULATIONS SHALL HAVE A CONTINUOUS COMMON SURFACE, NOT INTERRUPTED BY STEPS OR BY ABRUPT CHANGES IN LEVEL EXCEEDING 1/2 INCH AND SHALL BE A MINIMUM OF 48 INCHES IN WIDTH.
1.1 SLOPES LESS THAN 6 PERCENT: SURFACES WITH A SLOPE OF LESS THAN 6 PERCENT GRADIENT SHALL BE AT LEAST AS SLIP-RESISTANT AS DESCRIBED FOR A MEDIUM SALTED (MEDIUM BROOM) FINISH.
1.2 SLOPES 6 PERCENT OR GREATER: SURFACES WITH A SLOPE GREATER THAN 6 PERCENT GRADIENT SHALL BE SLIP-RESISTANT.
1.3 SURFACE CROSS SLOPES: SURFACE CROSS SLOPES SHALL NOT EXCEED 1/4 INCH PER FOOT.
2. GRATINGS: WALKS, SIDEWALKS, AND PEDESTRIAN WAYS SHALL BE FREE OF GRATINGS WHENEVER POSSIBLE.
3. CHANGES IN LEVEL: ABRUPT CHANGES IN LEVEL ALONG ANY ACCESSIBLE ROUTE SHALL NOT EXCEED 1/2 INCH.
4. WARNING CURBS: ABRUPT CHANGES IN LEVEL, EXCEPT BETWEEN A WALK OR SIDEWALK AND AN ADJACENT STREET OR DRIVEWAY.
5. PROVIDE A 60" X 60" LEVEL AREA WHERE A DOOR (OR GATE) SWINGS TOWARD THE WALK IN THE ACCESSIBLE ROUTE OF TRAVEL.
6. WALKS WITH CONTINUOUS GRADIENTS SHALL BE PROVIDED WITH LEVEL AREAS A MINIMUM 5'-0" LONG AT INTERVALS OF 400'-0" MAXIMUM PER CBC SECTION 11B-403.7.
7. A 36" WIDE DETECTABLE WARNING MATERIAL SHALL BE PROVIDED AT BOUNDARIES BETWEEN WALKWAYS AND VEHICULAR WAYS.
8. COLOR YELLOW FOR DETECTABLE WARNING SURFACE SHALL CONFORM TO COLOR NO. 33538 PER FEDERAL STANDARD NO. 595B.
9. PROVIDE MINIMUM 5 YEAR WARRANTY FOR DETECTABLE WARNING SURFACE PER DSA BULLETIN 10/31/02, REVISED 04/09/08.
PEDESTRIAN RAMPS
1. THE ALLOWABLE CROSS SLOPE AT PEDESTRIAN RAMPS SHALL BE 1/4 INCH PER FOOT (2%) MAXIMUM.
2. RAMP SURFACES WILL BE SLIP RESISTANT.
3. RAMP SHALL HAVE A MINIMUM WIDTH OF 48 INCHES.
4. REQUIRED LANDINGS AT THE TOP AND BOTTOM OF RAMPS.
STAIRWAYS
1. STRIPING FOR THE VISUALLY IMPAIRED: THE UPPER APPROACH AND THE LOWER TREAD OF EACH INTERIOR STAIR SHALL BE MARKED.
2. TRENCHING OPERATIONS SHALL BE PERFORMED WITH A SPOTTER.
3. STAIRWAY RISER MUST BE 4" MINIMUM AND 7" MAXIMUM, AND MINIMUM RUN SHALL BE 11".
4. OPEN RISERS ARE NOT PERMITTED.



Roesling Nakamura Terada Architects
285 N Ventura Ave #102
Ventura, CA 93001
F805.626.5330
F805.626.5350
www.RNArchitects.com



OJAI UNIFIED SCHOOL DISTRICT

SAN ANTONIO ELEMENTARY SCHOOL BARRIER REMOVAL PROJECT

650 Carne Road
Ojai, CA 93023

100% CDs

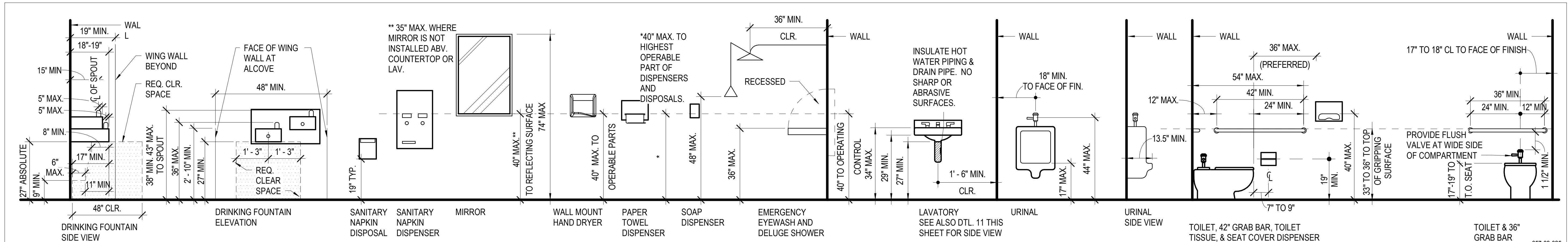
Table with 3 columns: No., Description, Date

Sheet Name

GENERAL NOTES

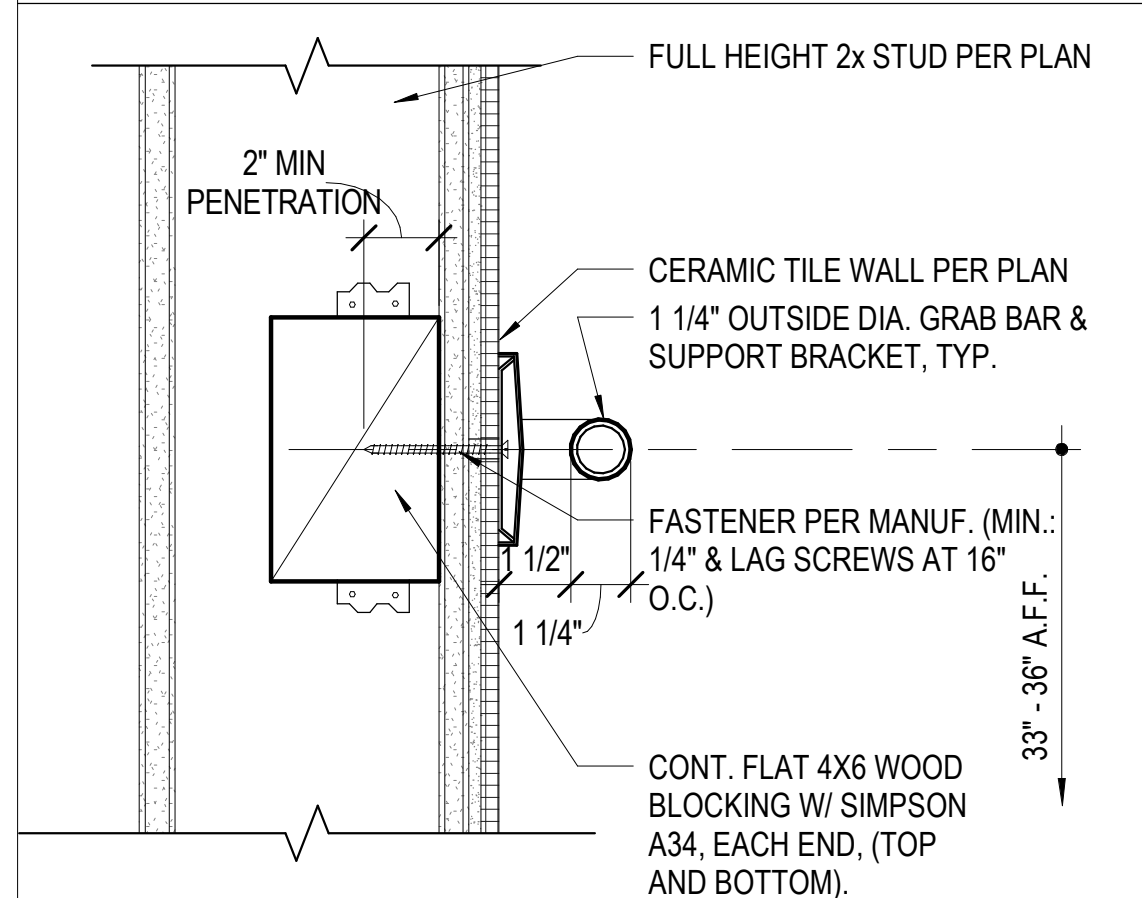
19850.01
Date 04/24/2020
Drawn by CLD
Checked by CY
Sheet Number

T-1.2



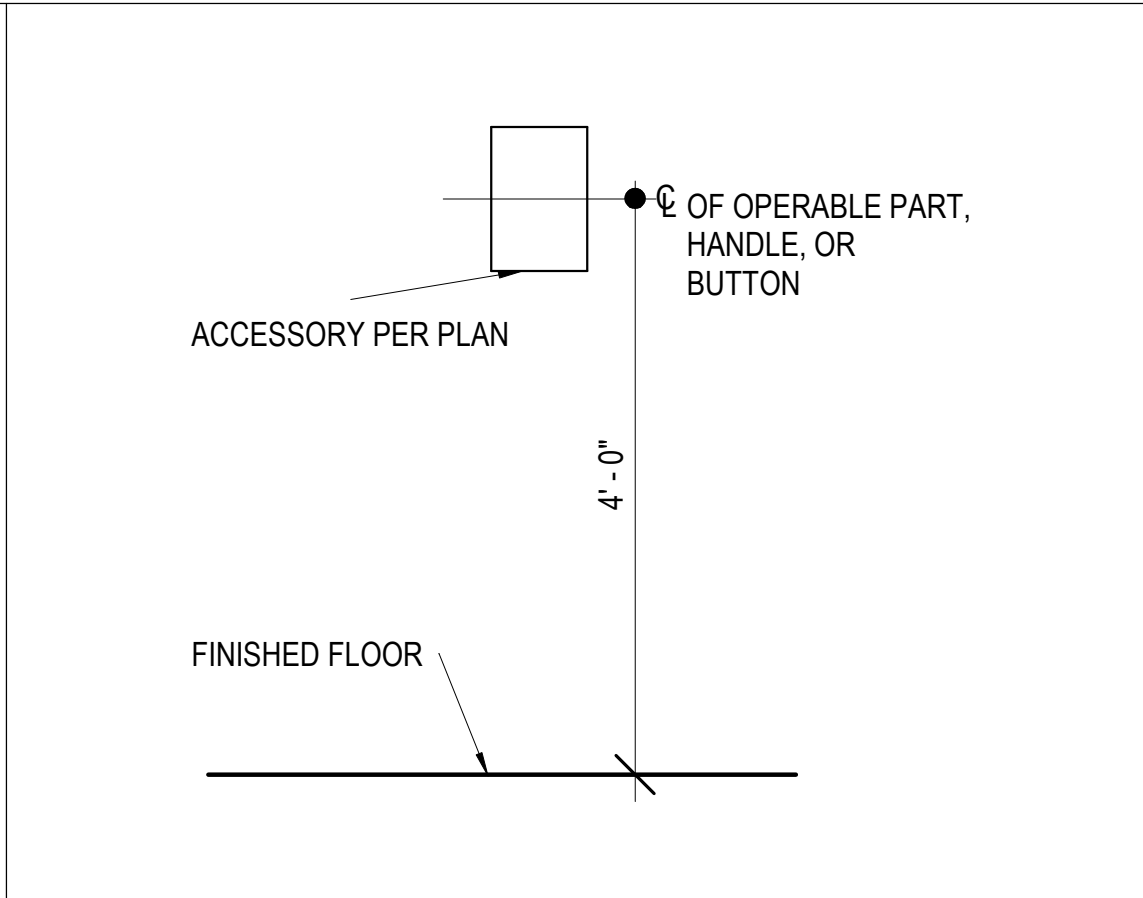
99-025 MOUNTING DETAILS

1/2" = 1'-0" 5



GRAB BAR SUPPORT

3" = 1'-0" 6



TYPICAL MOUNTING HEIGHT

3/4" = 1'-0" 7

DIMENSIONS FOR ACCESSIBILITY IN FACILITIES

TOILET (CENTERLINE) FROM WALL	17" - 18"
TOILET SEAT HT. (FF TO TOP OF SEAT)	17" - 19"
GRAB BAR HT. (FF TO TOP OF GRIPPING SURFACE)	33" - 36"
TOILET PAPER (CENTERLINE) IN FRONT OF TOILET SEAT EDGE	7" - 9"
NAPKIN DISPOSAL IN FRONT OF TOILET SEAT EDGE	NO REQUIREMENT
DISPENSER, DISPOSAL, OPERABLE PARTS OR MIRROR HT.	40" MAX.
LAVATORY / SINK TOP HT.	34" MAX.
LAVATORY / SINK KNEE CLEARANCE HT.	27" MIN.
URINAL LIP HT.	17" MAX.
URINAL FLUSH HANDLE HEIGHT	44" MAX.
LOW DRINKING FOUNTAIN BUBBLER HT.	36" MAX.
HIGH DRINKING FOUNTAIN BUBBLER HT.	38" - 43"
DRINKING FOUNTAIN KNEE CLEARANCE	27" MIN.
RAMP / STAIR HANDRAIL HT.	34" - 38"
DESKTOP HEIGHT / WORK SURFACE	28" - 34"
DESK KNEE SPACE	27" MIN.
F.E. CABINET HANDLE & F.E. HANDLE	48" MAX.

REQUIRED DIMENSIONS

1" = 1'-0" 8

SANITARY FACILITIES NOTES

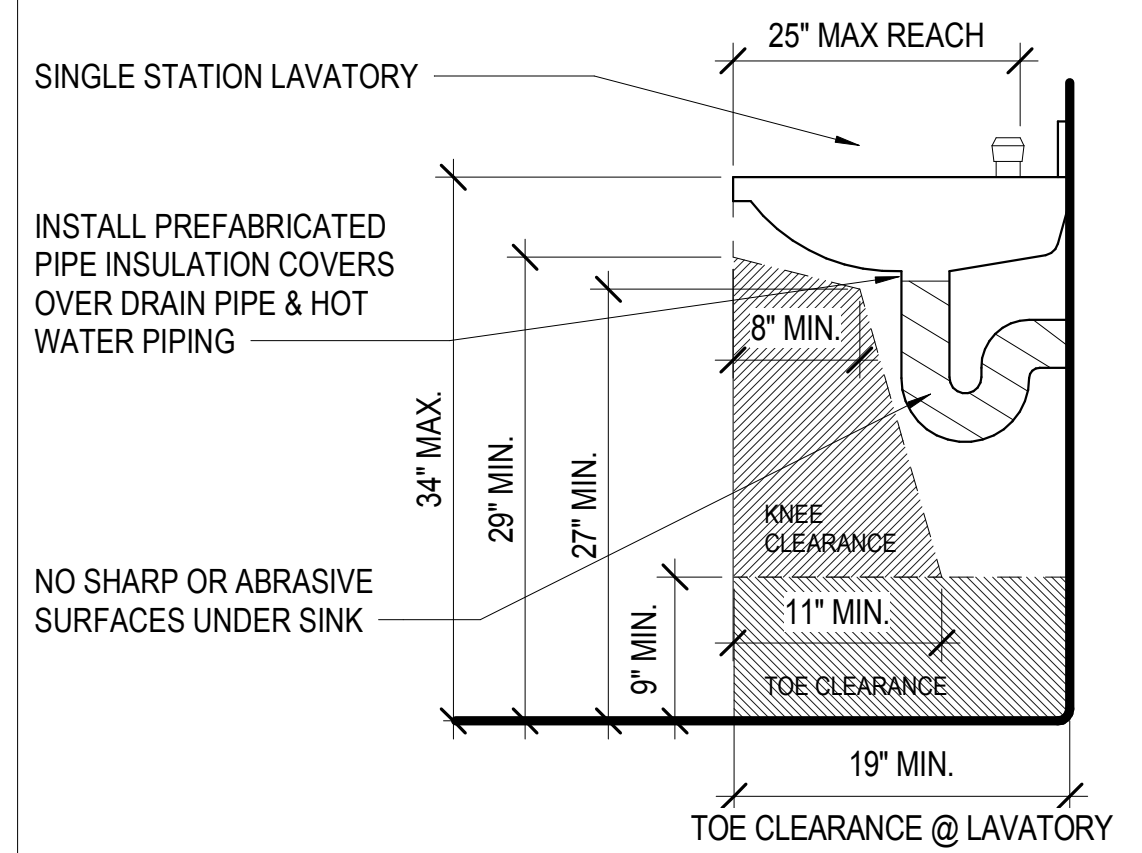
- IDENTIFICATION: DOORWAYS LEADING TO MEN'S SANITARY FACILITIES, SHALL BE IDENTIFIED BY AN EQUILATERAL TRIANGLE 1/4 INCH THICK WITH EDGES 12 INCHES LONG AND A VERTEX POINTING UPWARD. WOMEN'S SANITARY FACILITIES SHALL BE IDENTIFIED BY A CIRCLE, 1/4 INCH THICK AND 12 INCHES IN DIAMETER. UNSEX SANITARY FACILITIES SHALL BE IDENTIFIED BY A CIRCLE 1/4 INCH THICK, 12 INCHES IN DIAMETER WITH A 1/4 INCH THICK TRIANGLE SUPERIMPOSED ON THE CIRCLE AND WITHIN THE 12 INCH DIAMETER. THESE GEOMETRIC SYMBOLS SHALL BE CENTERED ON THE DOOR AT A HEIGHT OF 58 TO 60 INCHES ABOVE FINISH FLOOR AND THEIR COLOR SHALL CONTRAST WITH THE COLOR OF THE DOOR. SEE ACCESSIBILITY SIGNAGE CRITERIA FOR ADDITIONAL REQUIREMENTS.
- PASSAGEWAYS: PASSAGEWAYS LEADING TO SANITARY FACILITIES SHALL HAVE A CLEAR ACCESS AS SPECIFIED IN CHAPTER 11B DIVISION 4.
 - ALL DOORWAYS LEADING TO SUCH SANITARY FACILITIES SHALL HAVE A CLEAR OPENING WIDTH OF 32 INCHES (813 MM) MIN., AND 34 INCHES (864 MM) MIN. CLEAR FOR SIDE ENTRY INTO THE ACCESSIBILITY COMPARTMENT.
- TOILET FACILITIES
 - MULTIPLE-ACCOMMODATION TOILET FACILITIES: MULTIPLE-ACCOMMODATION TOILET FACILITIES SHALL HAVE THE FOLLOWING:
 - WHEELCHAIR CLEARANCE: A CLEAR SPACE MEASURED FROM THE FLOOR TO A HEIGHT OF 27 INCHES ABOVE THE FLOOR, WITHIN THE SANITARY FACILITY ROOM, OF SUFFICIENT SIZE TO INSCRIBE A CIRCLE WITH A DIAMETER NOT LESS THAN 60 INCHES. DOORS SHALL NOT SWING INTO THE FLOOR SPACE REQUIRED FOR ANY FIXTURE. THE LAYOUT OF THE COMPARTMENTS SHALL COMPLY WITH CBC FIGURE 11B-604.8.1.1.2 OR 11B-604.8.1.1.3.
 - CLEAR SPACE: THE COMPARTMENT SHALL PROVIDE A CLEAR SPACE OF MINIMUM 60 INCHES FROM THE SIDE WALL NEXT TO A FIXTURE AND 56 INCHES DEEP FROM THE WALL BEHIND THE TOILET. THERE SHALL BE 17 TO 18 INCHES FROM THE CENTERLINE OF THE WATER CLOSET TO THE WALL. A MINIMUM 48-INCH-LONG CLEAR SPACE SHALL BE PROVIDED IN FRONT OF THE WATER CLOSET IF THE COMPARTMENT HAS AN END-OPENING DOOR (FACING THE WATER CLOSET). A MINIMUM 60 INCH-LONG CLEAR SPACE SHALL BE PROVIDED IN A COMPARTMENT WITH THE DOOR LOCATED AT THE SIDE AND OPENING OUT. PROVIDE MINIMUM 72" IF THE DOOR IS OPENING IN. GRAB BARS SHALL NOT PROJECT MORE THAN 3 INCHES INTO THE CLEAR SPACES AS SPECIFIED ABOVE.
 - COMPARTMENT DOORS: WATER CLOSET COMPARTMENT SHALL BE EQUIPPED WITH A DOOR THAT HAS AN AUTOMATIC-CLOSING DEVICE, AND SHALL HAVE A CLEAR, UNOBSTRUCTED OPENING WIDTH OF 32 INCHES WHEN LOCATED AT THE END AND 34 INCHES WHEN LOCATED AT THE SIDE WITH THE DOOR POSITIONED AT AN ANGLE OF 90 DEGREES FROM ITS CLOSED POSITION. DOORS SHALL COMPLY WITH STANDARD ACCESSIBLE CLEARANCES, EXCEPT THAT IF THE APPROACH IS FROM THE PUSH SIDE OF THE COMPARTMENT DOOR, CLEARANCE BETWEEN THE DOOR SIDE OF THE COMPARTMENT AND ANY OBSTRUCTION SHALL BE 48 INCHES MINIMUM MEASURED PERPENDICULAR TO THE COMPARTMENT DOOR IN ITS CLOSED POSITION.

THE INSIDE AND OUTSIDE OF THE COMPARTMENT DOOR SHALL BE EQUIPPED WITH A LOOP OR U-SHAPED HANDLE IMMEDIATELY BELOW THE LATCH, MOUNTING HEIGHT OF 34" TO 44" A.F.F. THE LATCH SHALL BE FLIP-OVER STYLE, SLIDING OR OTHER HARDWARE NOT REQUIRING THE USER TO GRASP OR TWIST. EXCEPT FOR DOOR-OPENING WIDTHS AND DOOR SWINGS, A CLEAR, UNOBSTRUCTED ACCESS OF NOT LESS THAN 44 INCHES SHALL BE PROVIDED TO WATER CLOSET COMPARTMENTS DESIGNED FOR USE BY PERSONS WITH DISABILITIES AND THE SPACE IMMEDIATELY IN FRONT OF A WATER CLOSET COMPARTMENT SHALL NOT BE LESS THAN 48 INCHES (1219 MM) AS MEASURED AT RIGHT ANGLES TO COMPARTMENT DOOR IN ITS CLOSED POSITION.
 - SINGLE-ACCOMMODATION TOILET FACILITIES: THERE SHALL BE SUFFICIENT SPACE IN THE TOILET ROOM FOR A WHEELCHAIR MEASURING 30 INCHES WIDE BY 48 INCHES LONG TO ENTER THE ROOM AND PERMIT THE DOOR TO CLOSE. THERE SHALL BE IN THE ROOM A CLEAR FLOOR SPACE OF AT LEAST 60 INCHES IN DIAMETER. THE WATER CLOSET SHALL BE LOCATED IN A SPACE WHICH PROVIDES A CLEAR SPACE OF MINIMUM 60 INCHES FROM THE SIDE WALL NEXT TO A FIXTURE AND 56 INCHES DEEP FROM THE WALL BEHIND THE TOILET.
- TOILET ROOM FIXTURES AND ACCESSORIES
 - LAVATORY FIXTURES: A CLEAR FLOOR SPACE 30 INCHES BY 48 INCHES SHALL BE PROVIDED IN FRONT OF A LAVATORY TO ALLOW A FORWARD APPROACH. SUCH CLEAR FLOOR SPACE SHALL ADJOIN OR OVERLAP AN ACCESSIBLE ROUTE AND SHALL EXTEND INTO KNEE AND TOE SPACE UNDERNEATH THE LAVATORY. TOE SPACE SHALL EXTEND MINIMUM 9 INCHES ABOVE FINISH FLOOR AND SHALL EXTEND MINIMUM 17 INCHES AND MAXIMUM 19 INCHES UNDER THE LAVATORY. KNEE SPACE SHALL BE 11 INCHES DEEP MINIMUM AT 9 INCHES ABOVE THE FINISH FLOOR, 8 INCHES DEEP MINIMUM AT 27 INCHES ABOVE THE FINISH FLOOR, AND 29 INCHES ABOVE THE FINISH FLOOR AT THE EDGE OF THE LAVATORY SINK.
 - MIRRORS SHALL BE MOUNTED WITH THE BOTTOM EDGE MAX 40 INCHES FROM THE FLOOR WHERE INSTALLED ABOVE LAVATORIES OR COUNTERTOPS. WHERE MIRRORS ARE INSTALLED ELSEWHERE, ONE SHALL BE LOCATED WITH THE BOTTOM EDGE OF THE REFLECTING SURFACE 35 INCHES MAX ABOVE FINISH FLOOR.
 - TOWEL, SANITARY NAPKINS, WASTE RECEPTACLES, AND OTHER SIMILAR DISPENSING AND DISPOSAL FIXTURES: WHERE PROVIDED, AT LEAST ONE OF EACH TYPE SHALL BE LOCATED WITH ALL OPERABLE PARTS, INCLUDING COIN SLOTS, WITHIN 40 INCHES FROM THE FINISHED FLOOR.
 - TOILET TISSUE DISPENSERS: THE TOILET TISSUE DISPENSER AT EACH ACCESSIBLE TOILET SHALL BE LOCATED ON THE WALL SO THAT THE CENTERLINE OF THE DISPENSER IS 7 TO 9 INCHES HORIZONTALLY IN FRONT OF THE FRONT EDGE OF THE TOILET SEAT, WITH THE BOTTOM OF THE DISPENSER BELOW THE GRAB BAR AND 19 INCHES MINIMUM ABOVE FINISH FLOOR TO CENTERLINE OF ROLL OR DELIVERY HEIGHT. DISPENSERS THAT CONTROL DELIVERY OR THAT DOES NOT PERMIT CONTINUOUS PAPER FLOW SHALL NOT BE USED. LIMIT THE PROJECTION OF A SURFACE OR SEMI-RECESS MOUNTED DISPENSER FROM ENCRANCHING MORE THAN FOUR INCHES FROM THE FACE OF THE WALL OR PARTITION. DISPENSER SHALL NOT BE LOCATED BEHIND ANY GRAB BAR.
 - TOILET PAPER AND FEMININE NAPKIN DISPENSERS LOCATED ON THE GRAB BAR SIDE OF AN ACCESSIBLE TOILET ROOM OR STALL SHALL NOT BE LOCATED CLOSER THAN 1-1/2" CLEAR OF THE TANGENT POINT OF THE GRAB BAR. DO NOT LOCATE SURFACE MOUNTED ACCESSORIES ABOVE GRAB BARS.
 - URINALS: WHERE URINALS ARE PROVIDED, AT LEAST ONE SHALL HAVE A CLEAR FLOOR SPACE 30 INCHES BY 48 INCHES IN FRONT OF THE URINAL TO ALLOW FORWARD APPROACH.
 - COAT HOOKS, SHELVES, AND SIMILAR ACCESSORIES SHALL BE LOCATED MINIMUM 40 INCHES AND MAXIMUM 48 INCHES ABOVE THE FINISH FLOOR, WHERE THE REACH IS NOT OBSTRUCTED.

NOTES: FAUCET CONTROLS AND OPERATING MECHANISMS SHALL BE OPERABLE WITH ONE HAND AND SHALL NOT REQUIRE TIGHT GRASPING, PINCHING, OR TWISTING OF THE WRIST. THE FORCE REQUIRED TO ACTIVATE CONTROLS SHALL BE NO MORE THAN 5 LBS. LEVER OPERATED, PUSH TYPE & ELECTRONICALLY CONTROLLED MECHANISMS ARE ACCEPTABLE. SELF CLOSING VALVES ARE ALLOWED IF THE FAUCET REMAINS OPEN FOR AT LEAST 10 SECONDS.

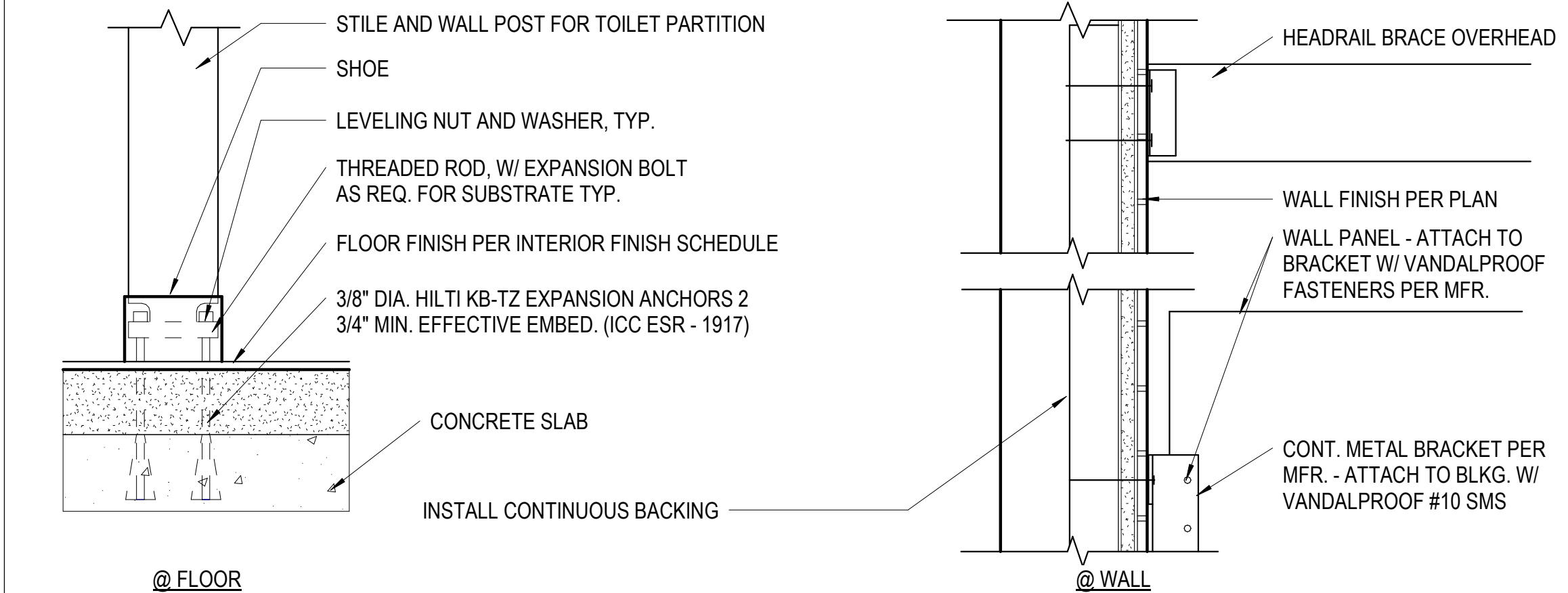
LEGEND

INDICATES REQUIRED CLEAR SPACE UNDER LAVATORY



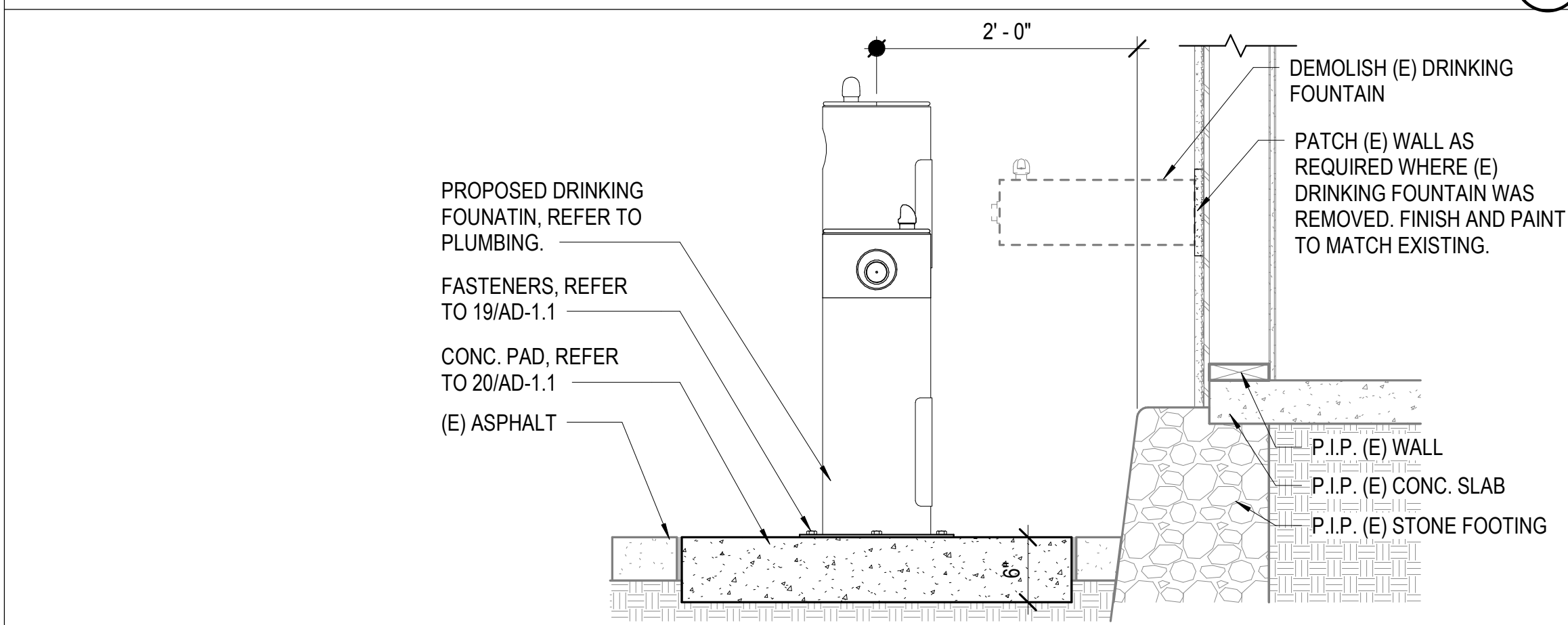
CLEARANCE @ LAVORATORY

1" = 1'-0" 16



TOILET PARTITION ANCHORAGE

3" = 1'-0" 13



(E) DRINKING FOUNTAIN

1" = 1'-0" 18

SANITARY FACILITY NOTES

1" = 1'-0" 20

IDENTIFICATION STAMP
DIV. OF THE STATE ARCHITECT
APP: 03-120224 INC.
REVIEWED FOR
SS FLS ACS
DATE: 09/02/2020

Roesing Nakamura
Terada Architects
285 N Ventura Ave #102
Ventura, CA 93001
F805.626.5330
F805.626.5350
www.RNArchitects.com

REGISTERED ARCHITECT
TYSON CLINE
NO. 34434
EXPIRES 1-31-21
STATE OF CALIFORNIA

OJAI
UNIFIED
SCHOOL
DISTRICT

SAN ANTONIO
ELEMENTARY
SCHOOL
BARRIER
REMOVAL
PROJECT

650 Carne Road
Ojai, CA 93023

100% CDs

No.	Description	Date

Sheet Name

TYPICAL
ACCESSIBLE
DETAILS

19850.01
Date 04/24/2020
Drawn by CLD
Checked by CY
Sheet Number

AD-1.3

BIM:360/1850.01 OUSD_San Antonio Access Improvements/San Antonio Access Improvements.rvt

FIXTURE SCHEDULE

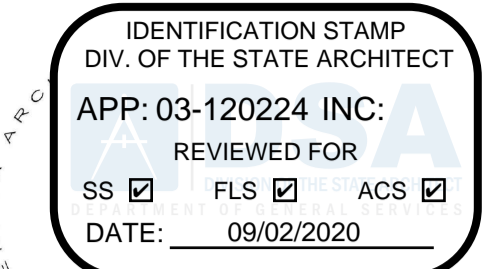
SYMBOL	WASTE	VENT	CW	HW	DESCRIPTION
	4	2	1-1/4	-	TOILET, WHITE VITREOUS CHINA, ELONGATED BOWL, FLOOR MOUNT. AMERICAN STANDARD MADERA FLOWISE 16-1/2" HEIGHT, MODEL 3461.001, WITH OLSONITE #95 OPEN FRONT SEAT. 1.28 GALLONS PER FLUSH, SLOAN FLUSHOMETER MODEL 111-1.28. SEE ARCHITECTURAL PLANS FOR ADA COMPLIANT INSTALLATION REQTS.
	2	1-1/2	1/2	1/2	LAVATORY, WALL MOUNT, WHITE VITREOUS CHINA, AMERICAN STANDARD "LUCERNE" 0355.012, W/ THREE HOLE (4" FIXED CENTERS), WITH METERING CHICAGO FAUCET MODEL 857-E2805-665PSHAB, (COLD WATER ONLY) 0.5 GPM, VANDAL-PROOF NON-AERATING OUTLET. INSTALL TRUEBRO LAV SHEILD. SEE ARCHITECTURAL PLANS FOR ADA COMPLIANT REQUIREMENTS FOR HEIGHTS AND LOCATIONS FOR EACH LAVATORY. INSTALL ON JR SMITH OR ZURN CARRIER.
	1-1/4	-	1/2	-	DRINKING FOUNTAIN. ELKAY MODEL LK4430BF1U, OUTDOOR EZH2O BOTTLE FILLING STATION TRI-LEVEL PEDESTAL, NON-FILTERED, NON-REFIGERATED. SEE ARCHITECT FOR HEIGHTS, LOCATION, & COLOR. ANCHOR UNIT TO SLAB.
	-	-	-	-	SHUT-OFF VALVE. NIBCO S-685-80-LF. 1/2" THRU 2", BRONZE BALL VALVE, FULL PORT, SOLDER END. T-FP-600A-LF, 2-1/2" & LARGER, BRASS BALL VALVE, FULL PORT, THREADED END. LOCATE IN RESTROOM ACCESS COVER, TO PROVIDE INDIVIDUAL RESTROOM ISOLATION FOR SERVICE. SIZE ON PLANS.
	2	1-1/2"	1/2 (TP)	-	FLOOR DRAIN. JR SMITH MODEL #2005Y-B-P, ZURN MODEL #415 J OR EQUAL. WITH SQUARE TOP, NO HUB AND TRAP PRIMER CONNECTION.
	-	-	1/2	-	TRAP PRIMER, MIFAB M-500, INSTALL IN COLD WATER LINE WITH 12"X12" JR SMITH 4730-U-NB STAINLESS STEEL ACCESS COVER. INSTALL W/MI-DU DISTRIBUTION UNIT WHERE MULTIPLE TRAPS ARE SERVED.
	-	-	1	-	WATER HAMMER ARRESTOR. JR SMITH 5005, ZURN Z-1700 #100, OR EQUAL. LOCATE INSIDE WALL WITH 12"X12" JR SMITH 4730-U-NB, STAINLESS STEEL ACCESS COVER WITH VANDAL-PROOF SCREWS.

GREEN BUILDING NOTES

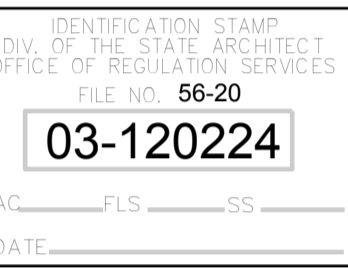
- GENERAL CONTRACTOR SHALL ESTABLISH A CONSTRUCTION WASTE MANAGEMENT PLAN FOR THE DIVERTED MATERIALS, IN ACCORDANCE WITH THE PROJECT SPECIFICATIONS, OR MEET LOCAL CONSTRUCTION AND DEMOLITION WASTE MANAGEMENT ORDINANCE, WHICHEVER IS MORE STRINGENT. WASTE MANAGEMENT PLAN SHALL:
 - IDENTIFY THE MATERIALS TO BE DIVERTED FROM DISPOSAL BY EFFICIENT USAGE, RECYCLING, REUSE ON THE PROJECT OR SALVAGE FOR FUTURE USE OR SALE.
 - DETERMINE IF MATERIAL WILL BE SORTED ON-SITE OR MIXED
 - IDENTIFY DIVERSION FACILITIES WHERE MATERIALS COLLECTED WILL BE TAKEN.
 - SPECIFY THE AMOUNT OF MATERIALS DIVERTED WHICH SHALL BE CALCULATED BY WEIGHT OR VOLUME, BUT NOT BOTH.
- RECYCLE WASTE MATERIAL BEING REMOVED FROM SITE TO THE GREATEST EXTENT POSSIBLE. RECORD ALL AMOUNTS DISPOSED AND ALL AMOUNTS RECYCLED.

NOTE :
CONTRACTOR SHALL FIRST OFFER ALL REMOVED FIXTURES TO THE DISTRICT. IF NOT WANTED BY THE DISTRICT, CONTRACTOR SHALL PROPERLY DISPOSE / RECYCLE.

AE Group
Mechanical Engineers, Inc.
 838 East Front Street
 Ventura, California 93001
 (805) 653-1722 FAX: (805) 653-7260
 phil@aeegruppe.com



Roesling Nakamura
Terada Architects
 285 N Ventura Ave #102
 Ventura, CA 93001
 P805.626.5330
 F805.626.5350
 www.RNTarchitects.com



OJAI
UNIFIED
SCHOOL
DISTRICT

SAN ANTONIO
ELEMENTARY
SCHOOL
BARRIER
REMOVAL
PROJECT
 650 Carne Road
 Ojai, CA 93023

100% CDs

No.	Description	Date

Sheet Name

PLUMBING SCHEDULE

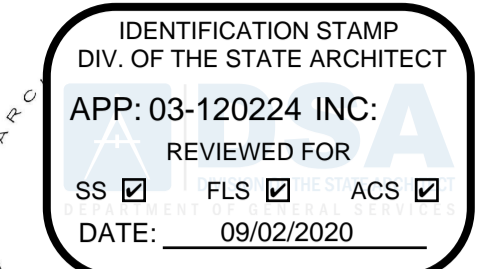
19850.01 / AE201925
 Date 10/01/2019
 Drawn by TP
 Checked by PW
 Sheet Number

P-1.1

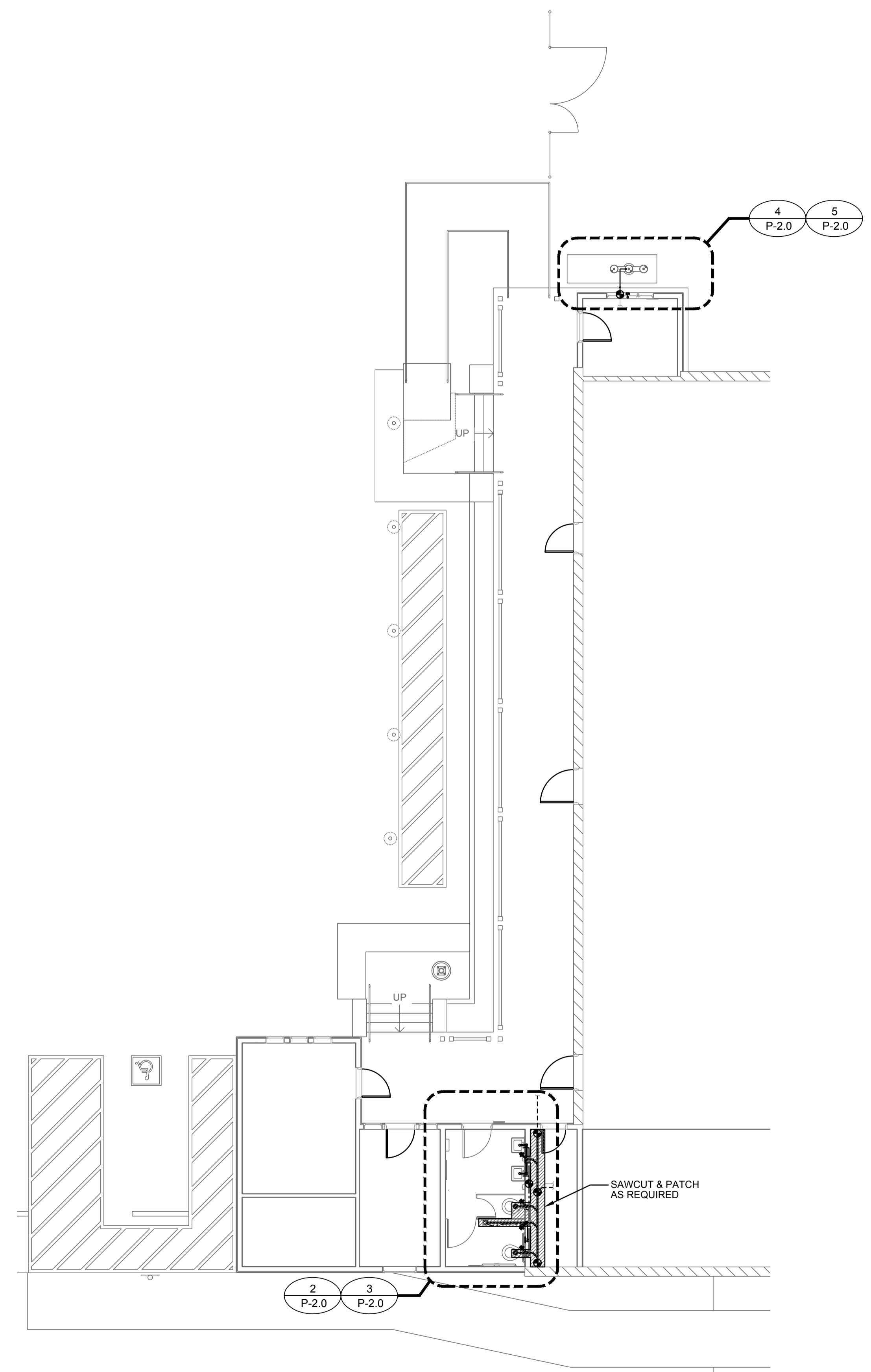
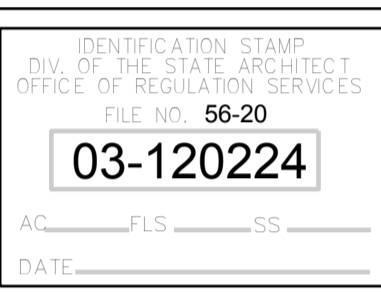
SYMBOL LEGEND	ABBREVIATIONS
FLOOR DRAIN FLOOR CLEAN OUT COTG IN YARD BOX FLOOR SINK WALL CLEAN-OUT SHUT-OFF VALVE POINT OF DISCONNECT POINT OF CONNECTION HOSE BIB SAWCUT & PATCH	ABBREV. ABBREVIATIONS ABV. ABOVE APPROX. APPROXIMATELY AFF ABOVE FINISHED FLOOR BLDG BUILDING BLW. BELOW BOT BOTTOM CFM CUBIC FEET PER MINUTE CL CENTERLINE CLG CEILING COND CONDENSATE CONT CONTINUED CW COLD WATER DIA DIAMETER DN DOWN DS DOWN SPOUT DWG DRAWING (E) EXISTING EA EACH EL ELEV ELEVATION ELEC ELECTRIC EQ EQUIPMENT EQUIP EQUIPMENT EXH EXHAUST FIN FINISHED FLR FLOOR FRM FROM G GAS GPM GALLONS PER MINUTE HW HOT WATER HWR HOT WATER RETURN MIN. MINIMUM MAX. MAXIMUM (N) NEW OC ON CENTER POC POINT OF CONNECTION RD ROOF DRAIN SHT SHEET SOV SHUT-OFF VALVE TP TRAP PRIMER TW TEMPERED WATER TYP TYPICAL UGND UNDERGROUND VTR VENT TO ROOF WCO WALL CLEAN-OUT
LINE LEGEND	
(E) COLD WATER (N) COLD WATER (E) HOT WATER (N) HOT WATER TW (N) TEMPERED WATER HWR (N) HOT WATER RETURN (E) VENT (N) VENT (N) WASTE OR SEWER (E) WASTE DEMO WASTE G (E) GAS G (N) GAS COND (N) CONDENSATE TEE	

MATERIAL SCHEDULE - ALL US MANUFACTURER

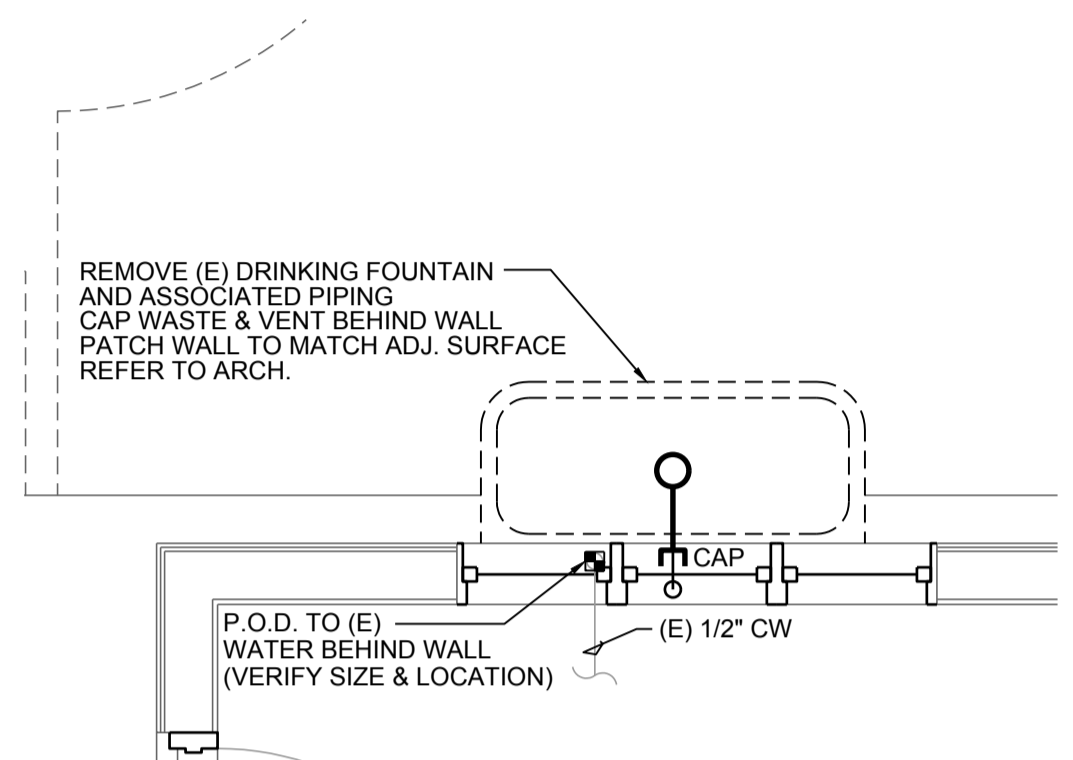
SITE WATER PIPING, UNDERGROUND:	SCHEDULE 80 PVC
DOMESTIC WATER PIPING, ABOVE GROUND:	HARD COPPER TUBE:TYPE 'L' WATER TUBE
DOMESTIC WATER PIPING, BELOW GRADE:	SOFT COPPER TUBE:TYPE 'K' WATER TUBE
CONDENSATE DRAIN PIPING:	HARD COPPER TUBE:TYPE 'L' WATER TUBE
NATURAL GAS PIPING, BURIED:	POLYETHYLENE, SDR 11.0
NATURAL GAS PIPING, ABOVE GROUND:	STEEL PIPE: BLACK / GALV. STEEL, SCHEDULE 40
SANITARY WASTE AND VENT PIPING:	"NO-HUB" CAST-IRON PIPE



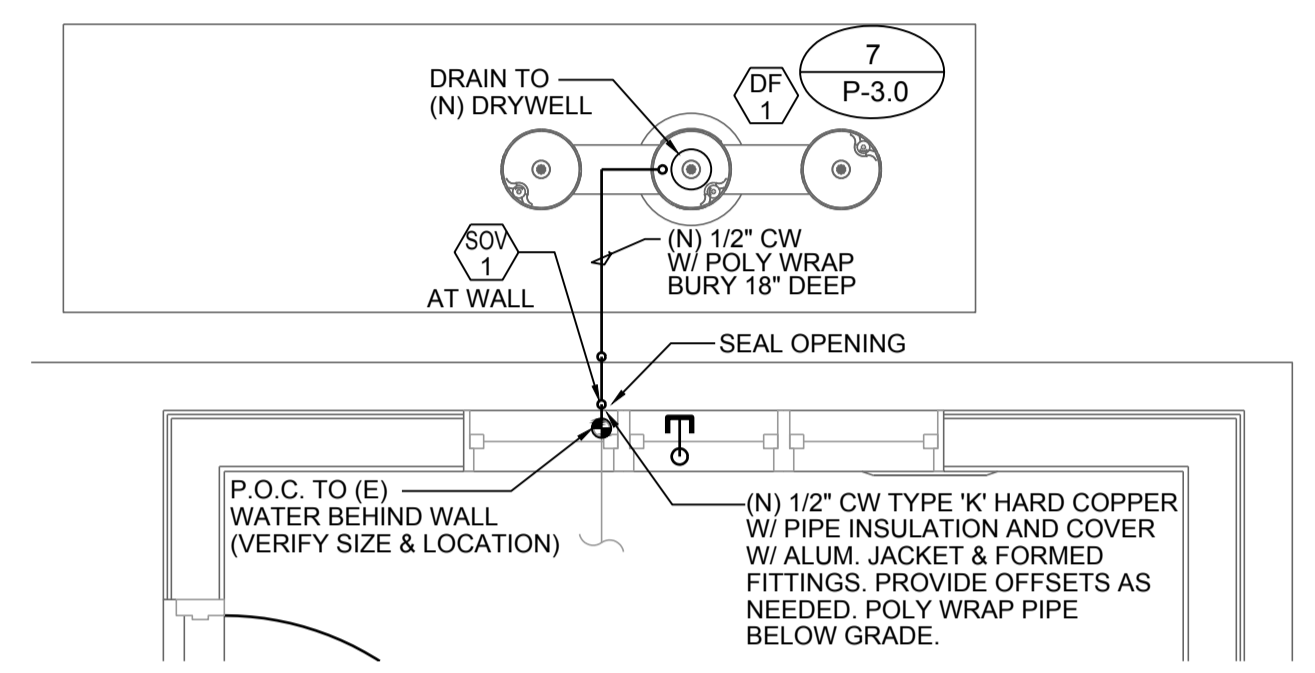
Roesling Nakamura
 Terada Architects
 285 N Ventura Ave #102
 Ventura, CA 93001
 P805.626.5330
 F805.626.5350
 www.RNTarchitects.com



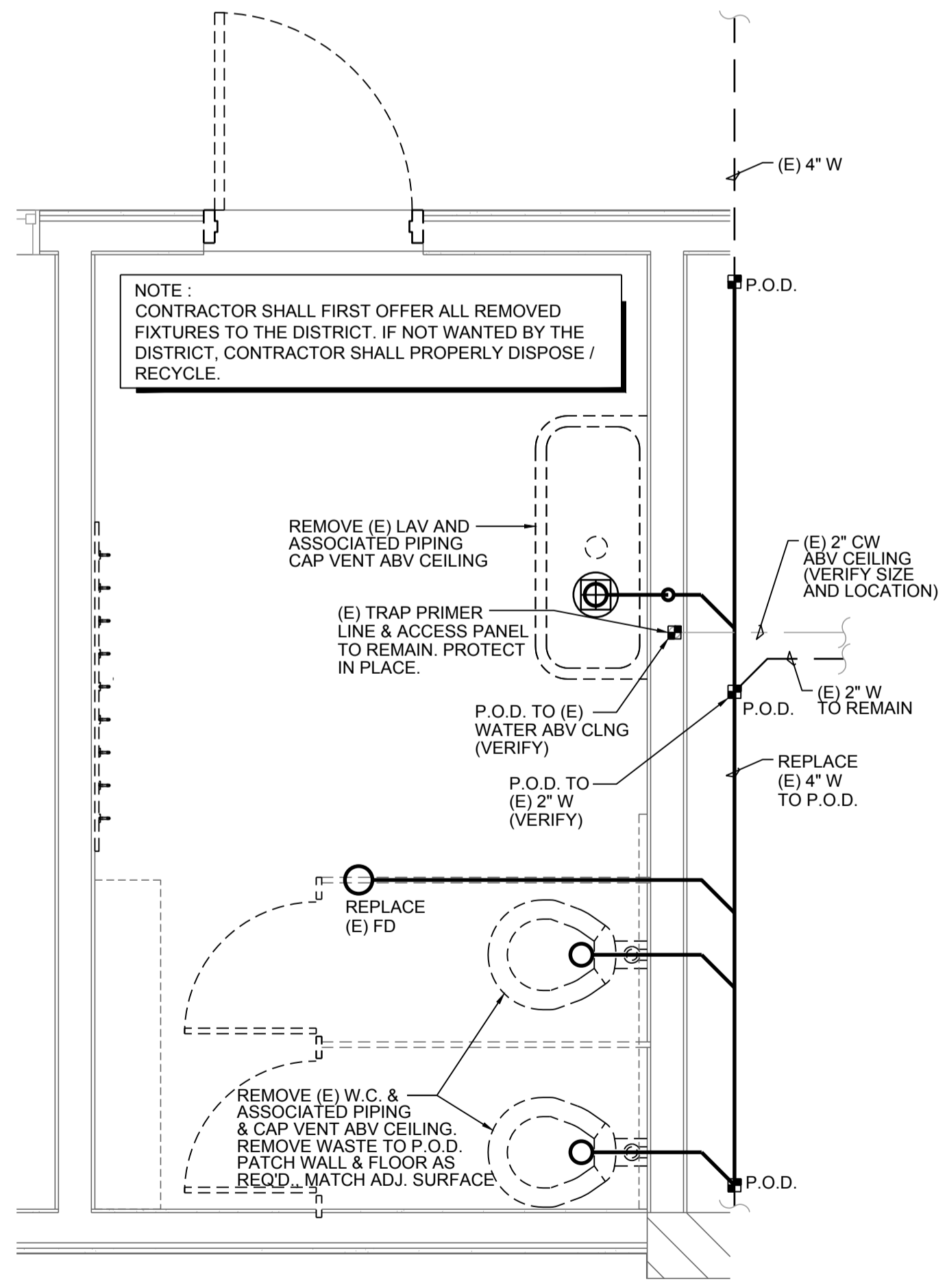
1 PLUMBING PARTIAL SITE PLAN
 1/8" = 1'-0"



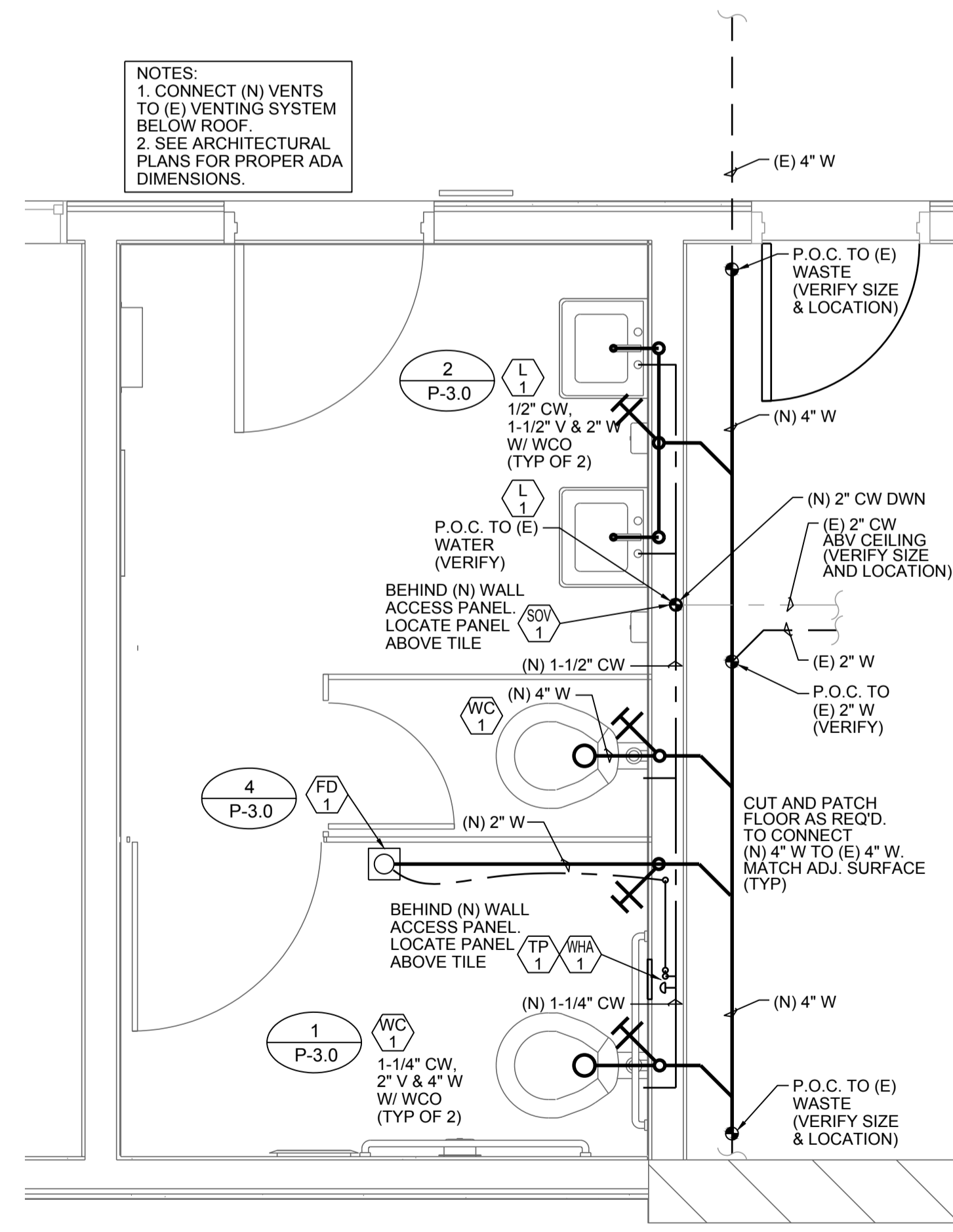
4 ENLARGED PLUMBING DEMO PLAN
 1/2" = 1'-0"



5 ENLARGED PLUMBING PLAN
 1/2" = 1'-0"



2 ENLARGED PLUMBING DEMO PLAN
 1/2" = 1'-0"



3 ENLARGED PLUMBING PLAN
 1/2" = 1'-0"

OJAI
 UNIFIED
 SCHOOL
 DISTRICT

SAN ANTONIO
 ELEMENTARY
 SCHOOL
 BARRIER
 REMOVAL
 PROJECT
 650 Carne Road
 Ojai, CA 93023

100% CDs

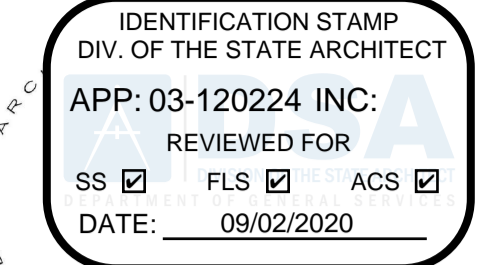
No.	Description	Date

Sheet Name

PLUMBING
 PLANS

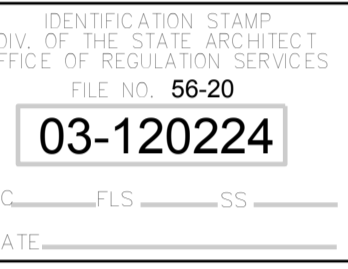
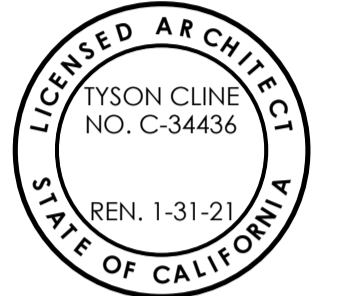
19850.01 / AE201925
 Date 10/01/2019
 Drawn by TP
 Checked by PW
 Sheet Number

P-2.0



Roesling Nakamura
 Terada Architects

285 N Ventura Ave #102
 Ventura, CA 93001
 P805.626.5330
 F805.626.5350
 www.RNTarchitects.com



OJAI
 UNIFIED
 SCHOOL
 DISTRICT

SAN ANTONIO
 ELEMENTARY
 SCHOOL
 BARRIER
 REMOVAL
 PROJECT
 650 Carne Road
 Ojai, CA 93023

100% CDs

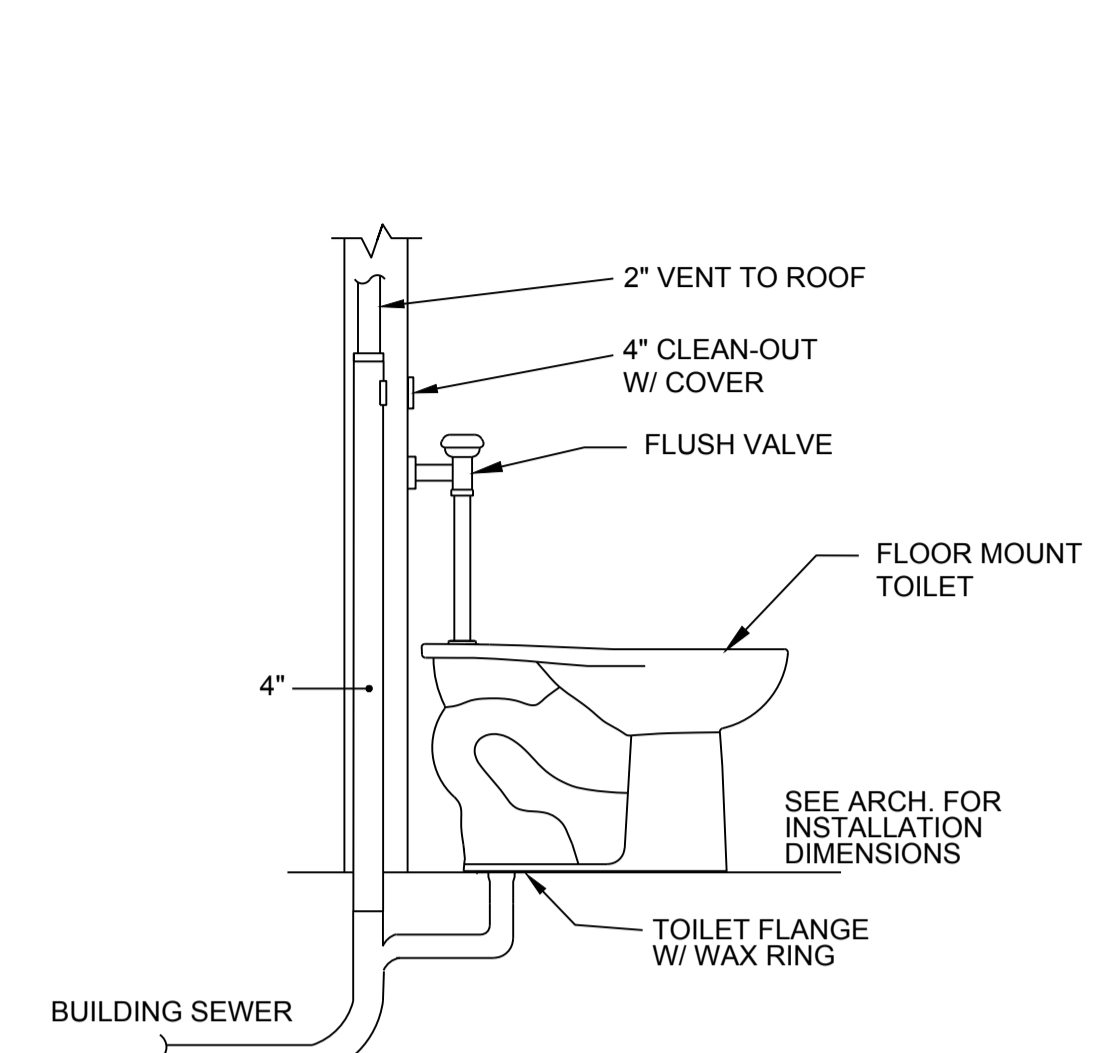
No.	Description	Date

Sheet Name

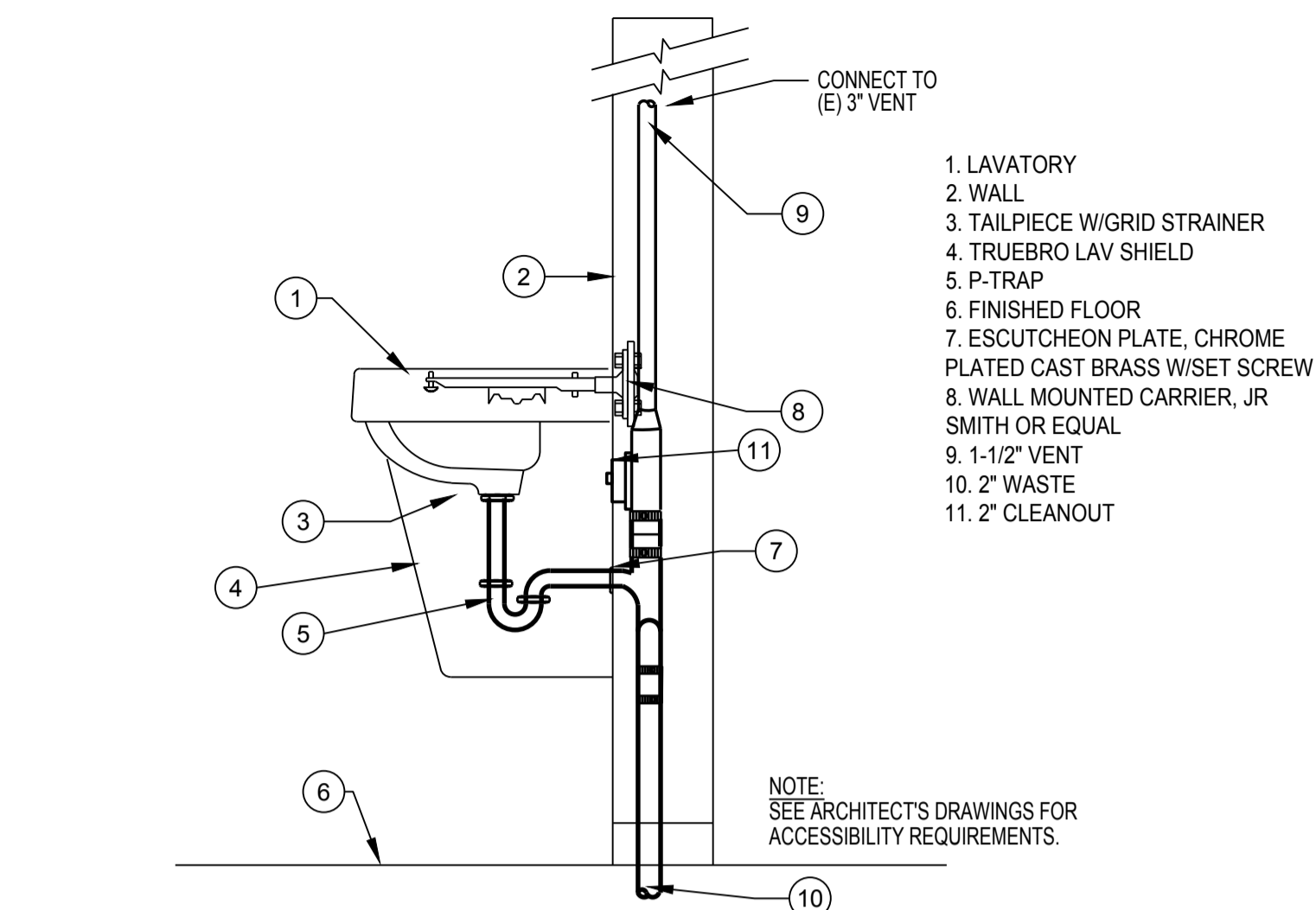
**PLUMBING
 DETAILS**

19850.01 / AE201925
 Date 10/01/2019
 Drawn by TP
 Checked by PW
 Sheet Number

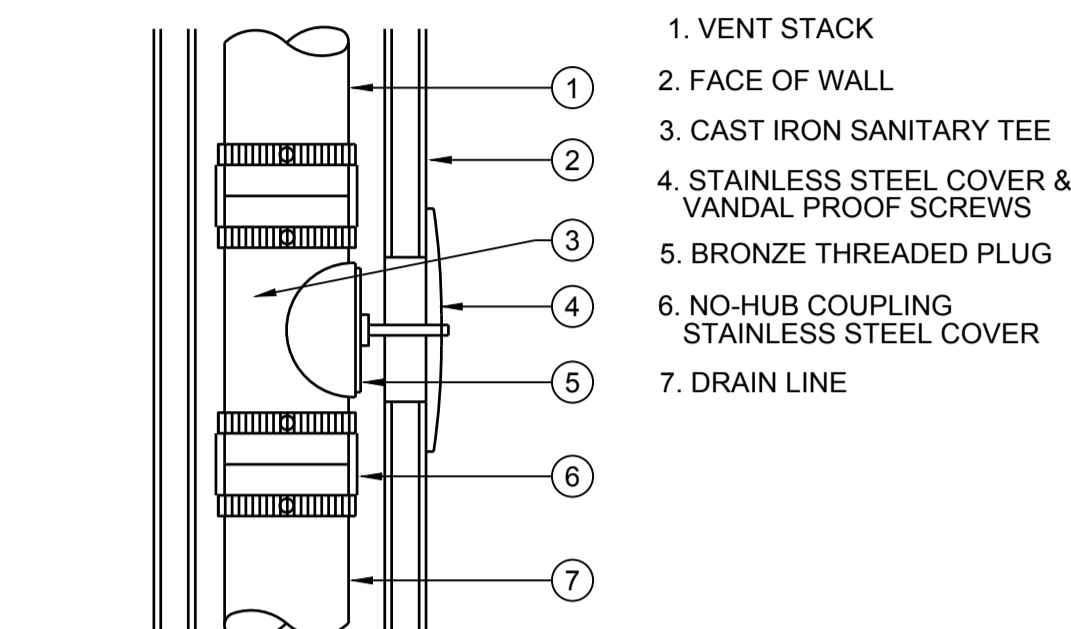
P-3.0



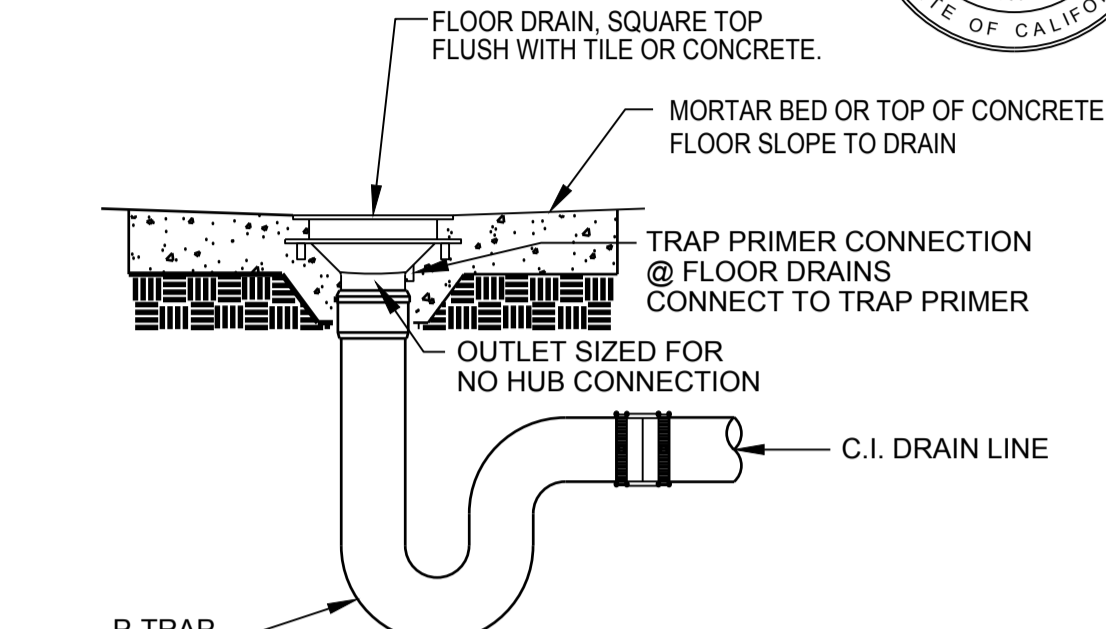
1 WATER CLOSET DETAIL
 P-3.0 SCALE: NONE



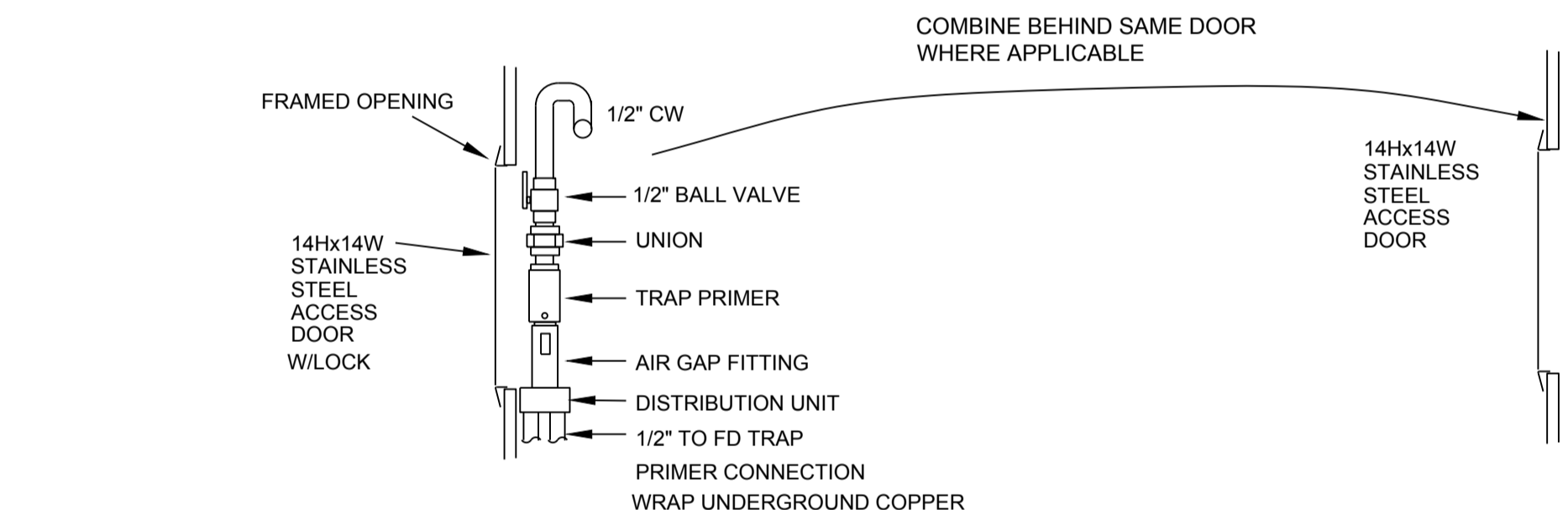
2 LAVATORY DRAIN PIPE DETAIL
 P-3.0 SCALE: NONE



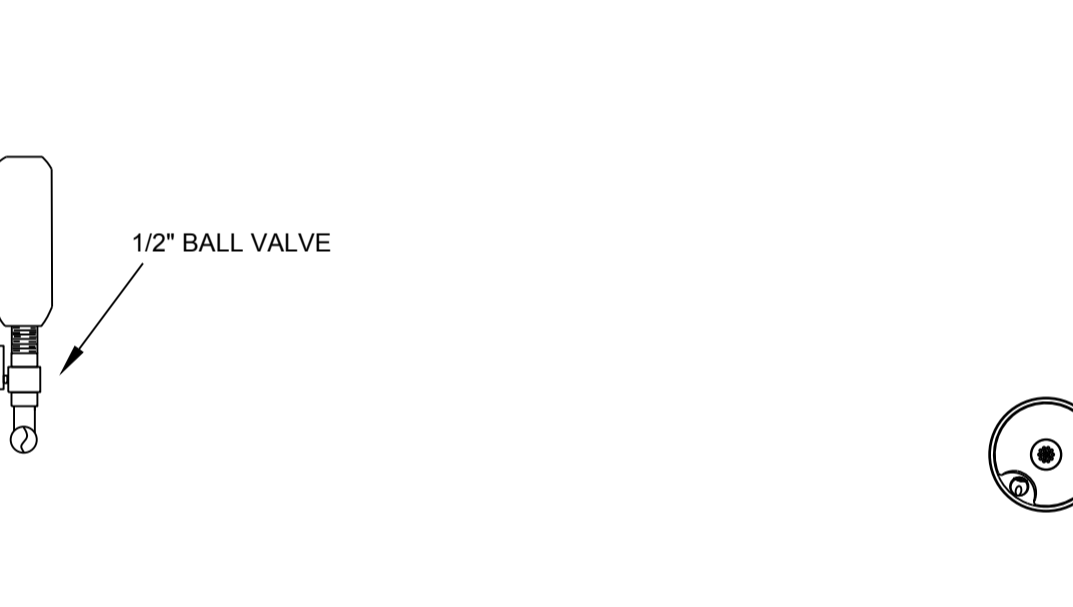
3 WALL CLEAN OUT DETAIL
 P-3.0 SCALE: NONE



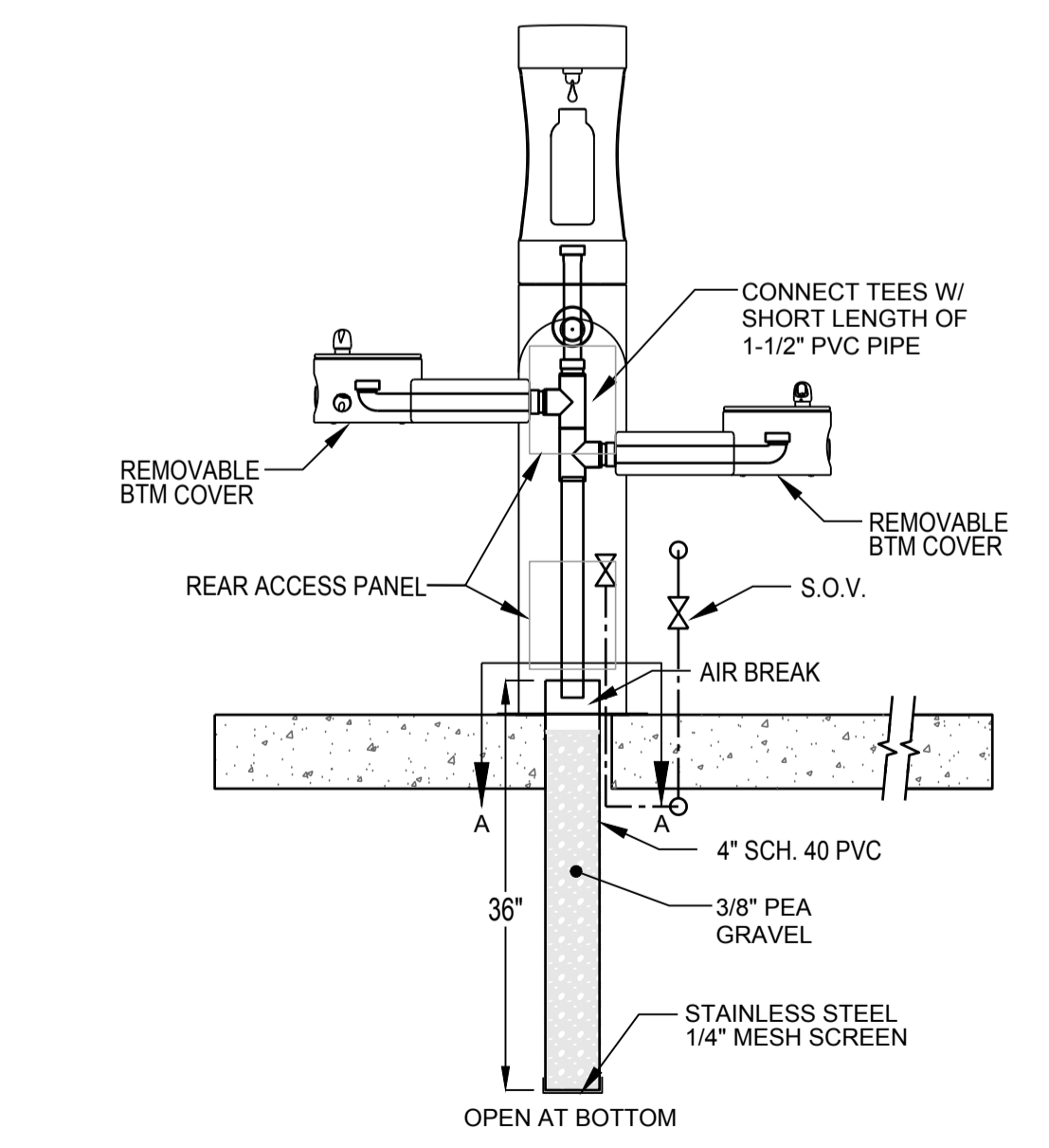
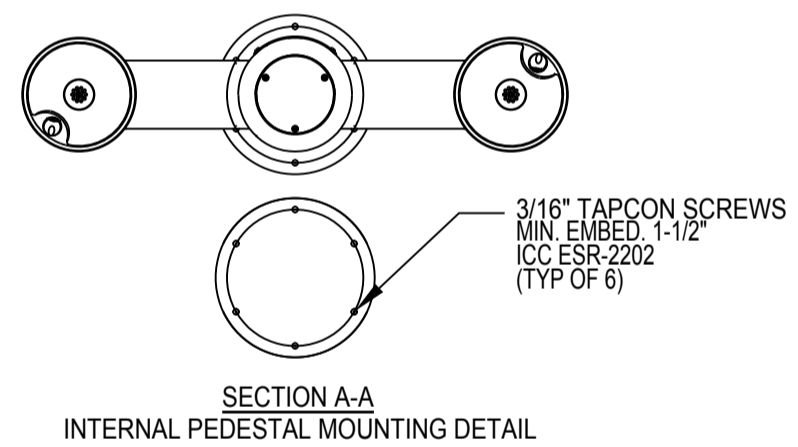
4 FLOOR DRAIN DETAIL
 P-3.0 SCALE: NONE



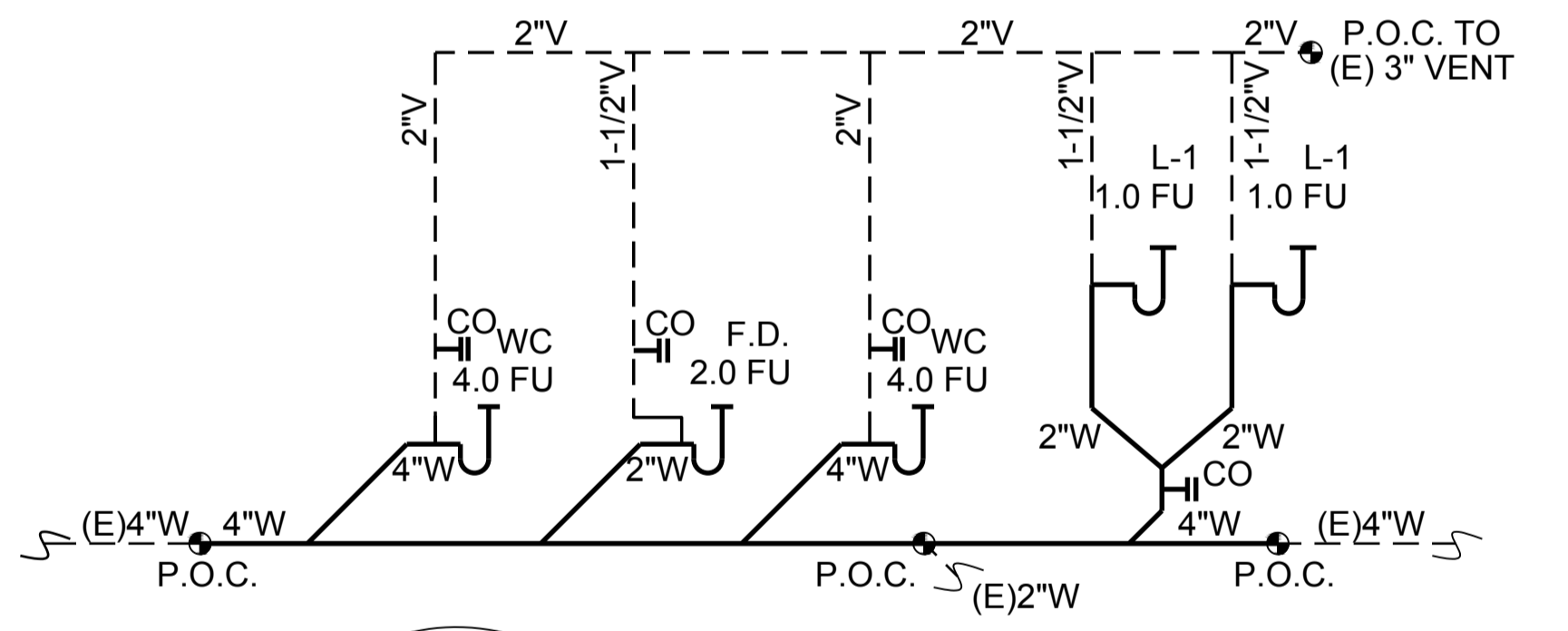
5 TRAP PRIMER DETAIL
 P-3.0 SCALE: NONE



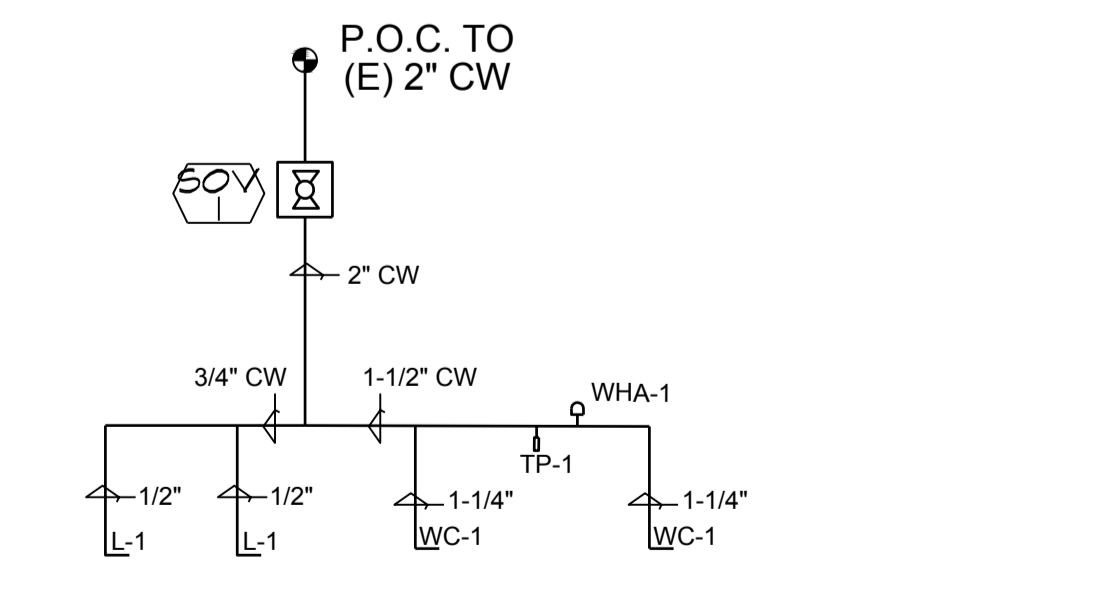
6 WATER HAMMER ARRESTOR
 P-3.0 SCALE: NONE



7 DRINKING FOUNTAIN DETAILS
 P-3.0 SCALE: NONE



8 WASTE PIPING DIAGRAM
 P-3.0 SCALE: NONE



9 COLD WATER PIPING DIAGRAM
 P-3.0 SCALE: NONE