



Architects and Engineers Inc.

5191 Columbus Rd.
Macon, GA 31206
(770) 477-7465
(770) 477-9511
frontdesk@spdesigngrp.com



LOCAL FUNDS ONLY
BIBB BOE BID # 17-26

REVISION

THIS DRAWING IS THE PROPERTY OF SP DESIGN GROUP, ARCHITECTS AND ENGINEERS, INC. IT IS TO BE USED ONLY FOR THE PROJECT AND SITE SPECIFICALLY IDENTIFIED HEREON AND IS NOT TO BE USED ON OTHER PROJECTS OR EXTENDINGS TO THIS PROJECT OR OTHERWISE IN ANY MANNER WITHOUT THE WRITTEN AGREEMENT OR PERMISSION OF SP DESIGN GROUP, ARCHITECTS AND ENGINEERS, INC.

HVAC RENOVATIONS
 TO
MATILDA HARTLEY ELEMENTARY
 FOR THE BIBB COUNTY BOARD OF EDUCATION
 BIBB COUNTY GEORGIA

PROJECT NO.
17-005

SHEET TITLE
TITLE SHEET

DATE
APRIL 18, 2017

DRAWN BY

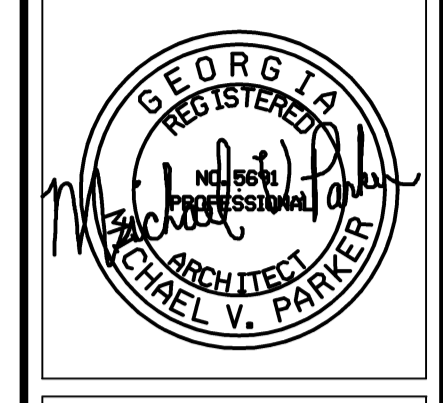
CHECKED BY

SHEET NUMBER

T1

HVAC RENOVATIONS
 TO
MATILDA HARTLEY ELEMENTARY
 FOR THE BIBB COUNTY BOARD OF EDUCATION
 BIBB COUNTY GEORGIA

T1	TITLE SHEET
A1.1	FLOOR PLAN - DEMOLITION AND NEW
A2.1	ARCHITECTURAL DETAILS
M001	MECHANICAL LEGEND, SCHEDULES AND NOTES
M101	FLOOR PLAN - MECHANICAL DEMOLITION
M102	FLOOR PLAN BUILDING 2020 - MECHANICAL DEMOLITION, ALTERNATE 2
M201	FLOOR PLAN BUILDING 2010 - MECHANICAL RENOVATION
M202	FLOOR PLAN BUILDING 2010 - MECHANICAL RENOVATION
M203	FLOOR PLAN BUILDING 2020 - MECHANICAL RENOVATION, ALTERNATES 1 & 2
E1.1	ELECTRICAL FLOOR PLAN
E1.2	PARTIAL POWER RISER, PARTIAL POWER PLAN, ALTERNATES 1 & 2



REVISION

THIS DRAWING IS THE PROPERTY OF SP DESIGN GROUP ARCHITECTS AND ENGINEERS. IT IS TO BE USED ONLY FOR THE PROJECT AND SITE SPECIFICALLY IDENTIFIED HEREON AND IS NOT TO BE USED ON OTHER PROJECTS OR EXTENSIONS TO THIS PROJECT OR OTHERWISE IN ANY MANNER WITHOUT THE WRITTEN AGREEMENT AND SIGNATURE OF THE ARCHITECT/ENGINEER.

HVAC RENOVATIONS
TO
MATILDA HARTLEY ELEMENTARY
FOR THE BIBB COUNTY BOARD OF EDUCATION
BIBB COUNTY GEORGIA

PROJECT NO. 17-005

SHEET TITLE

FLOOR PLAN
DEMOLITION AND NEW

DATE

APRIL 18, 2017

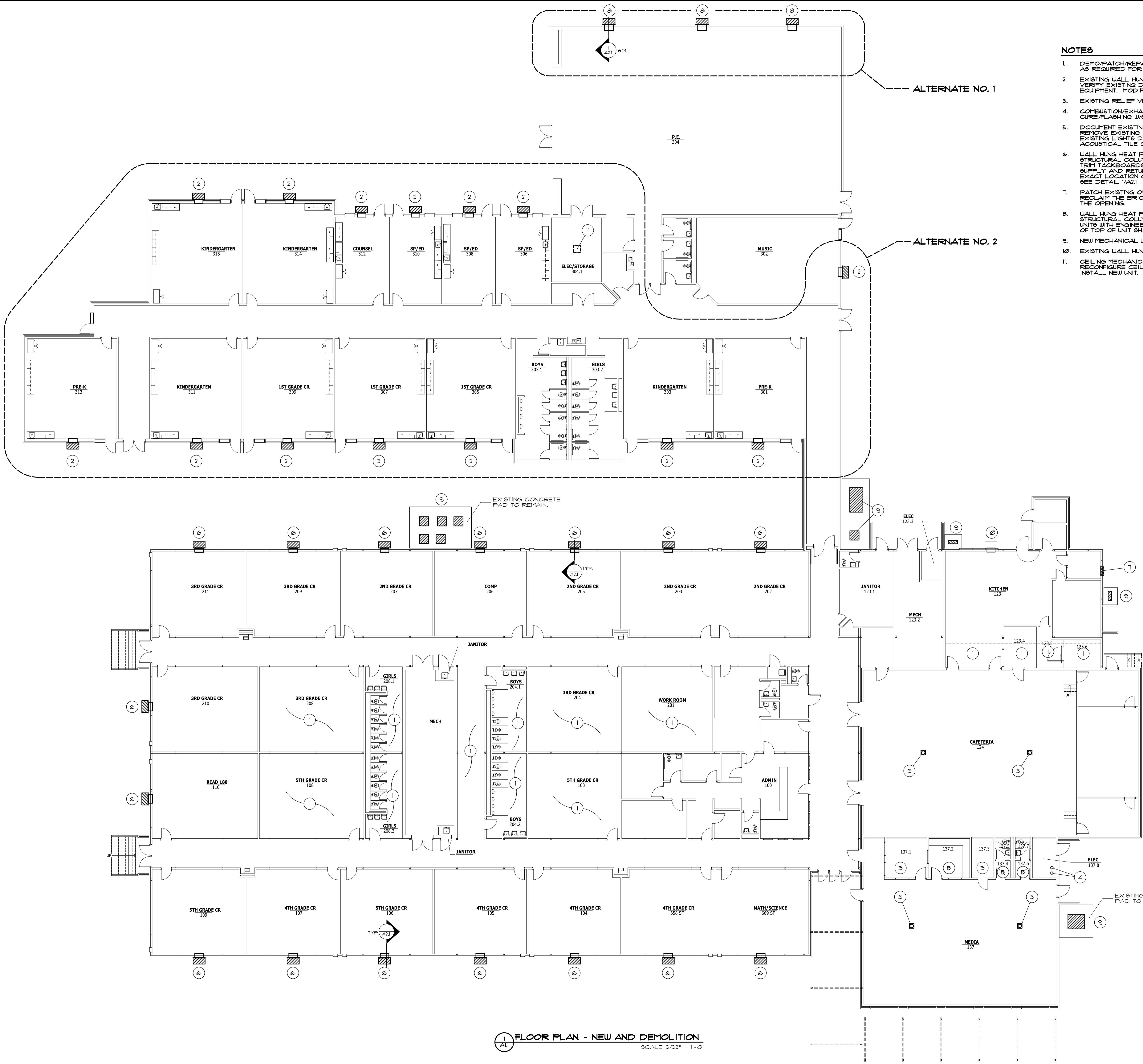
DRAWN BY
RAD CTS

CHECKED BY
MVP

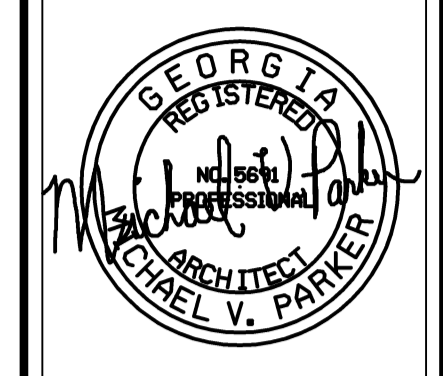
SHEET NUMBER

A1.1

- NOTES**
1. DEMO/PATCH/REPAIR/REPLACE EXISTING 2 X 2 GRID TILE CEILING AS REQUIRED FOR INSTALLATION OF NEW DUCT. SEE MECHANICAL.
 2. EXISTING WALL HUNG UNITS ARE TO BE REMOVED. SEE MECHANICAL. VERIFY EXISTING DUCT OPENINGS AND COORDINATE WITH NEW EQUIPMENT. MODIFY EXISTING OPENINGS IF REQUIRED.
 3. EXISTING RELIEF VENT TO BE SEALED - SEE DETAIL 2/A2.1
 4. COMBUSTION/EXHAUST VENTS FOR NEW AHU. INSTALL METAL ROOF CURB/FLASHING W/SEALANT. SEE MECHANICAL FOR LOCATION.
 5. DOCUMENT EXISTING CEILING GRID LAYOUT AND CONFIGURATION. REMOVE EXISTING ACOUSTICAL TILE CEILING AND GRID. SUPPORT EXISTING LIGHTS DURING CONSTRUCTION. PROVIDE NEW 2 X 2 ACOUSTICAL TILE CEILING AND GRID. REINSTALL LIGHTS IN NEW GRID.
 6. WALL HUNG HEAT PUMP. LOCATE TO AVOID CONFLICT WITH STRUCTURAL COLUMNS AND BUILT IN CASEWORK IF NECESSARY. TRIM TACKBOARDS TO ALLOW CLEARANCE FOR HEAT PUMP SUPPLY AND RETURN WALL GRILLES/DIFFUSERS. FIELD VERIFY EXACT LOCATION OF UNITS WITH ENGINEER PRIOR TO DEMOLITION. SEE DETAIL 1/A2.1
 7. PATCH EXISTING OPENING WITH MASONRY TO MATCH EXISTING. RECLAIM THE BRICK FROM THE WHHP DEMOLITION TO FILL THE OPENING.
 8. WALL HUNG HEAT PUMP. LOCATE TO AVOID CONFLICT WITH STRUCTURAL COLUMNS. FIELD VERIFY EXACT LOCATION OF UNITS WITH ENGINEER PRIOR TO DEMOLITION. MAX HEIGHT OF TOP OF UNIT SHALL BE 10'-0" AFF.
 9. NEW MECHANICAL UNITS ON CONCRETE PADS. SEE MECHANICAL.
 10. EXISTING WALL HUNG HEAT PUMP TO REMAIN AS IS.
 11. CEILING MECHANICAL UNIT IS TO BE REPLACED. ADJUST/RECONFIGURE CEILING GRID AND TILE AS NECESSARY TO INSTALL NEW UNIT.



FLOOR PLAN - NEW AND DEMOLITION
SCALE 3/32" = 1'-0"



REVISION

THIS DRAWING IS THE PROPERTY OF SP DESIGN GROUP, ARCHITECTS AND ENGINEERS. IT IS TO BE USED ONLY FOR THE PROJECT AND SITE SPECIFICALLY IDENTIFIED HEREON AND IS NOT TO BE USED ON OTHER PROJECTS OR EXTENSIONS TO THIS PROJECT OR OTHERWISE IN ANY MANNER WITHOUT THE WRITTEN AGREEMENT OF SP DESIGN GROUP, ARCHITECTS AND ENGINEERS.

HVAC RENOVATIONS
TO
MATILDA HARTLEY ELEMENTARY
FOR THE BIBB COUNTY BOARD OF EDUCATION
BIBB COUNTY GEORGIA

PROJECT NO.
17-005

SHEET TITLE
DETAILS

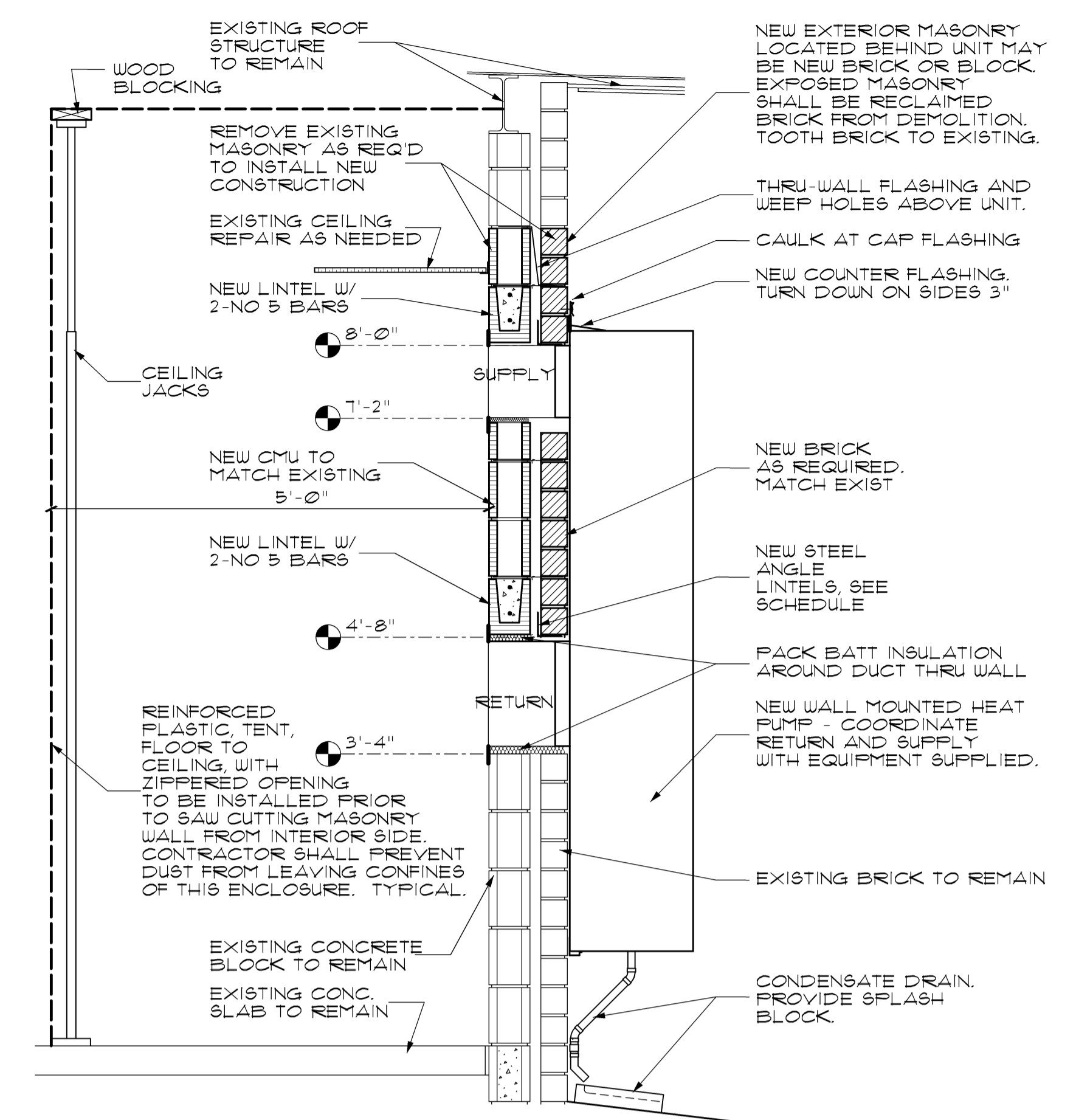
DATE
APRIL 18, 2017

DRAWN BY
RAD

CHECKED BY
MVP

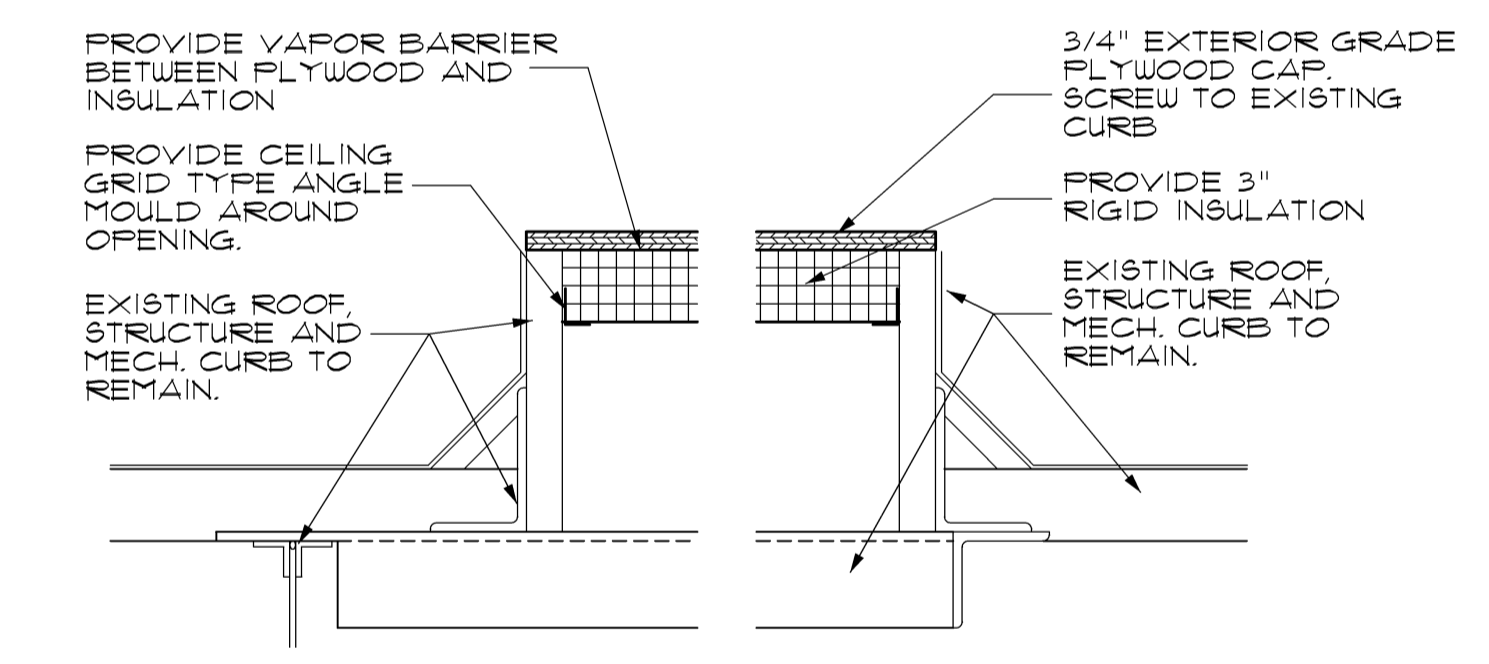
SHEET NUMBER

A2.1

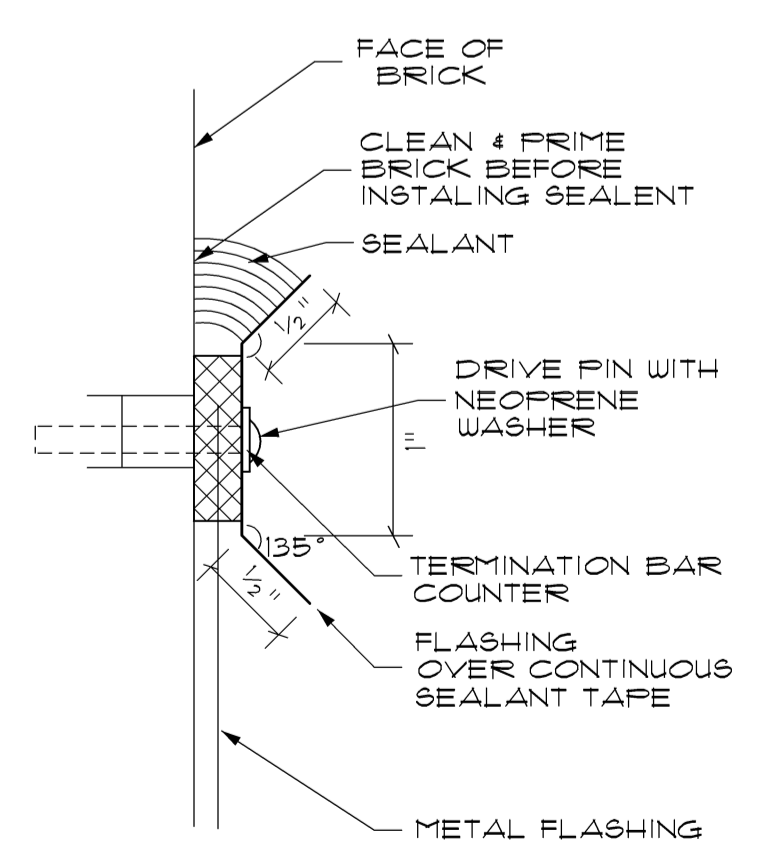


NOTE THAT THE WALL HUNG HEAT PUMP SHOWN MAY OR MAY NOT REFLECT THE EXACT CONFIGURATION OF THE HEAT PUMP PROVIDED ON THE JOB. DUE TO DIFFERENT SIZE UNITS AND DIFFERENT MANUFACTURERS THE EXACT CONFIGURATION OF SUPPLY AND RETURN IS UNKNOWN. THE DESIGN INTENT OF THE TYPICAL WHHP IS TO LOCATE THE TOP OF THE SUPPLY AT 8'-0". OTHER DIMENSIONS MAY VARY. VERIFY ALL LOCATIONS WITH THE ENGINEER PRIOR TO DEMOLITION.

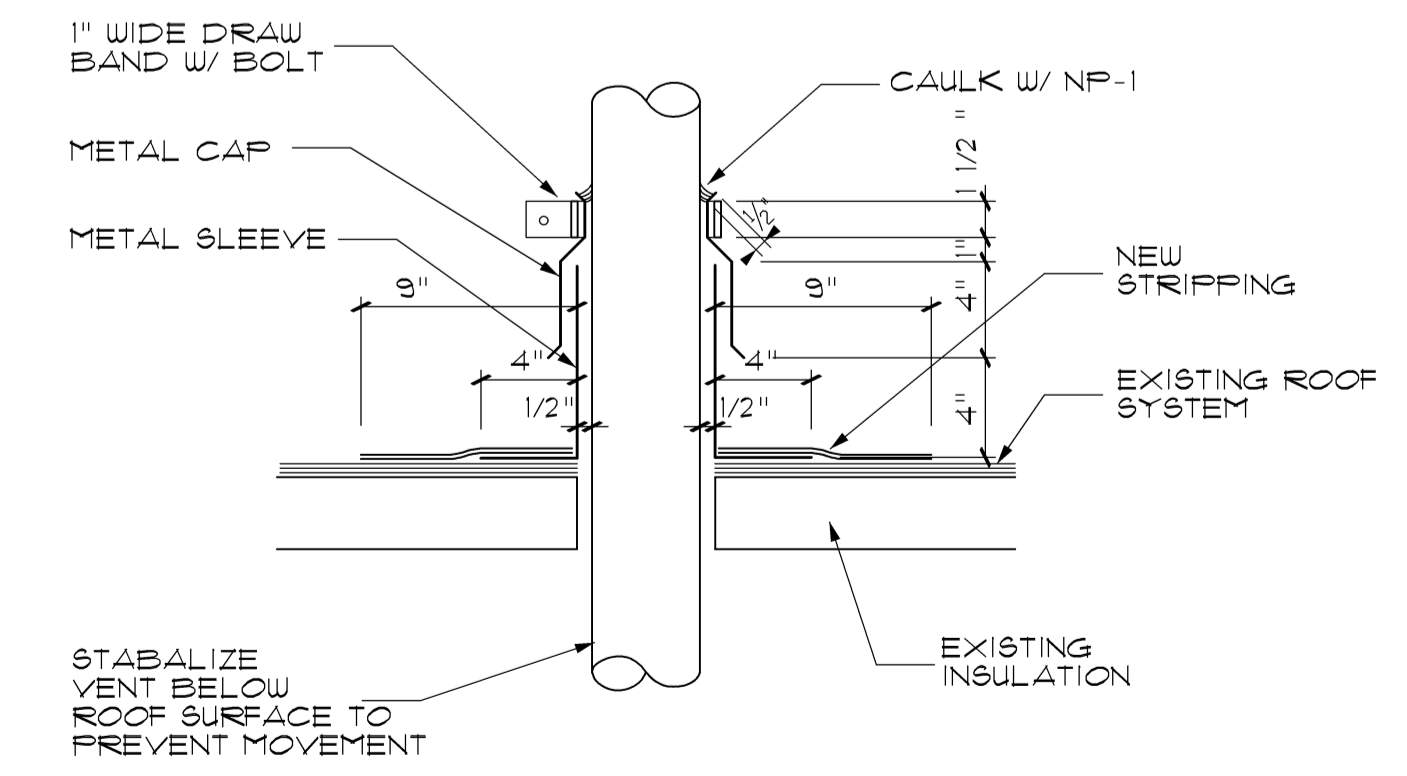
1 WHHP SECTION IN EXISTING WALL
SCALE 3/4" = 1'-0"



2 CAP AT EXISTING ROOF CURB
SCALE 1 1/2" = 1'-0"

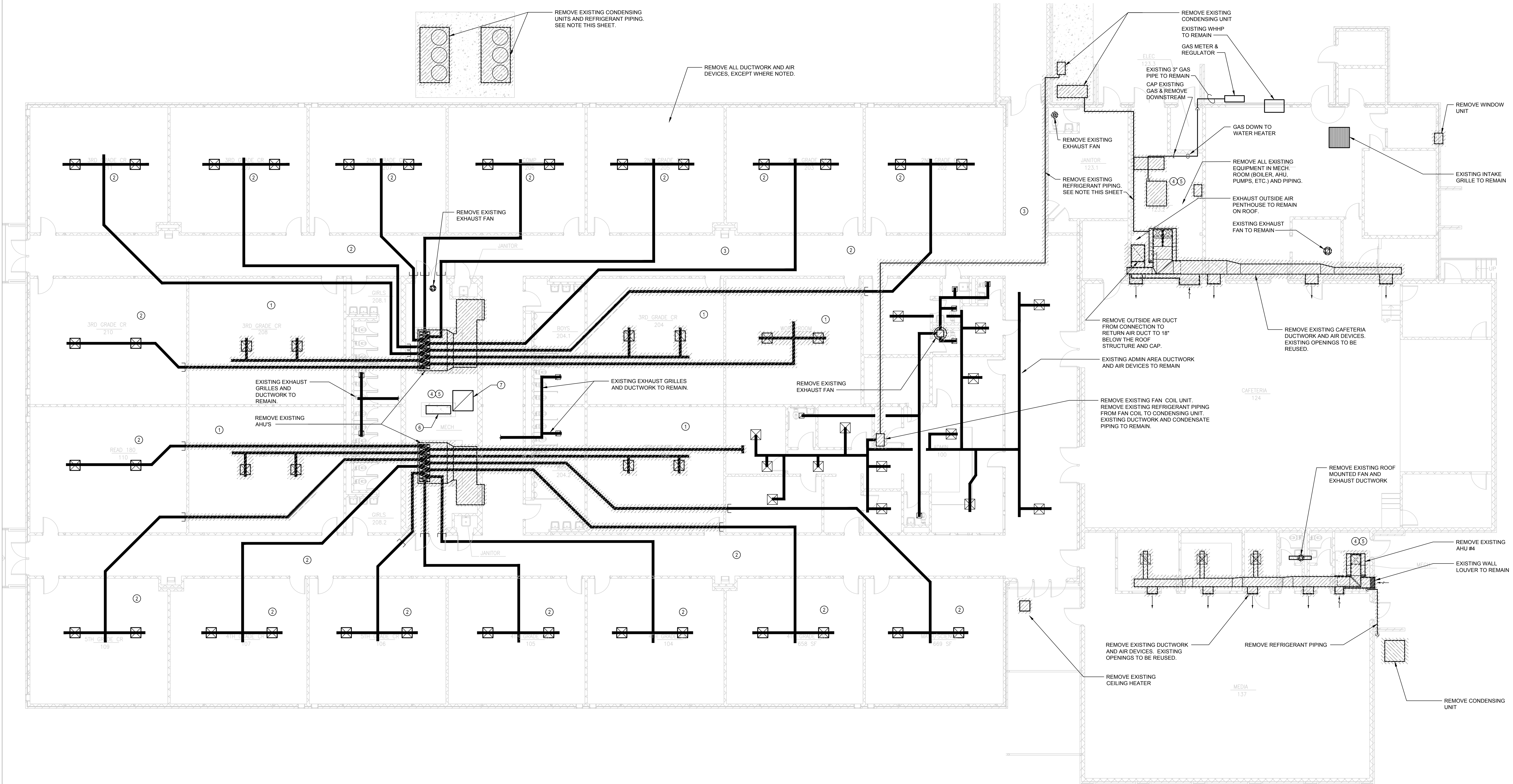


3 CAP FLASHING
SCALE 1 1/2" = 1'-0"



4 TYPICAL ROUND PENETRATION
SCALE 1 1/2" = 1'-0"

SEE SHEET M102 FOR CONTINUATION




1 FLOOR PLAN - MECHANICAL DEMOLITION
SCALE: 1/8"=1'-0"

DEMOLITION NOTES:

- ① REMOVE ALL EXISTING DUCTWORK IN CLASSROOMS SERVED BY NEW FAN COIL UNITS: 103, 106, 201, 204 & 206
- ② ALL EXISTING DUCTWORK IN CLASSROOMS SERVED BY NEW WALL HEAT PUMP UNITS, AND CORRIDORS TO BE ABANDONED IN PLACE.
- ③ ALL EXISTING HOT WATER PIPING OUTSIDE THE MECHANICAL ROOM TO BE ABANDONED IN PLACE. (NOT SHOWN)
- ④ REMOVE ALL EXISTING HOT WATER PIPING INSIDE MECHANICAL ROOMS
- ⑤ REMOVE ALL PNEUMATIC PIPING, COMPRESSORS, CONTROL PANELS.
- ⑥ REMOVE EXISTING WATER COOLER AND ALL ASSOCIATED PIPING AND CONTROLS
- ⑦ EXISTING OUTDOOR AIR INTAKE TO REMAIN. REMOVE ALL OA DUCT 24" BELOW STRUCTURE. EXISTING OA INTAKE AND DUCT THRU ROOF TO REMAIN.


NOTES:

BIB COUNTY PERSONNEL WILL RECOVER REFRIGERANT R-22 PRIOR TO CONSTRUCTION. COORDINATE TIMING OF START OF CONSTRUCTION.




Architects and Engineers Inc.

5191 Columbus Rd.
Macon, GA 31206
(F)478.477.7465
(F)478.477.9511
frontdesk@spdesigngrp.com



SPENCER Bristol Engineering, Inc.
2029 Peachtree Parkway, Suite 100
Norcross, Georgia 30092
Tel: 770-441-6074 Fax: 770-441-6074
www.spdesigngrp.com
SPE Project No. 17004



LOCAL FUNDS ONLY
BIBB BOE BID # 17-26

REVISION

THIS DRAWING IS THE PROPERTY OF SP DESIGN GROUP, INC. AND ENGINEERS. IT IS TO BE USED ONLY FOR THE PROJECT AND SITE SPECIFICALLY IDENTIFIED HEREIN. IT IS NOT TO BE USED FOR ANY OTHER PROJECT OR SITE WITHOUT THE WRITTEN CONSENT OF SP DESIGN GROUP, INC. AND ENGINEERS. ANY REPRODUCTION OF THIS DRAWING WITHOUT THE WRITTEN CONSENT OF SP DESIGN GROUP, INC. AND ENGINEERS IS PROHIBITED AND WILL BE PENALIZED WITH APPROPRIATE COMPENSATION.

HVAC RENOVATIONS
TO
MATILDA HARTLEY ELEMENTARY
FOR THE BIBB COUNTY BOARD OF EDUCATION
BIBB COUNTY GEORGIA

PROJECT NO.
17-006

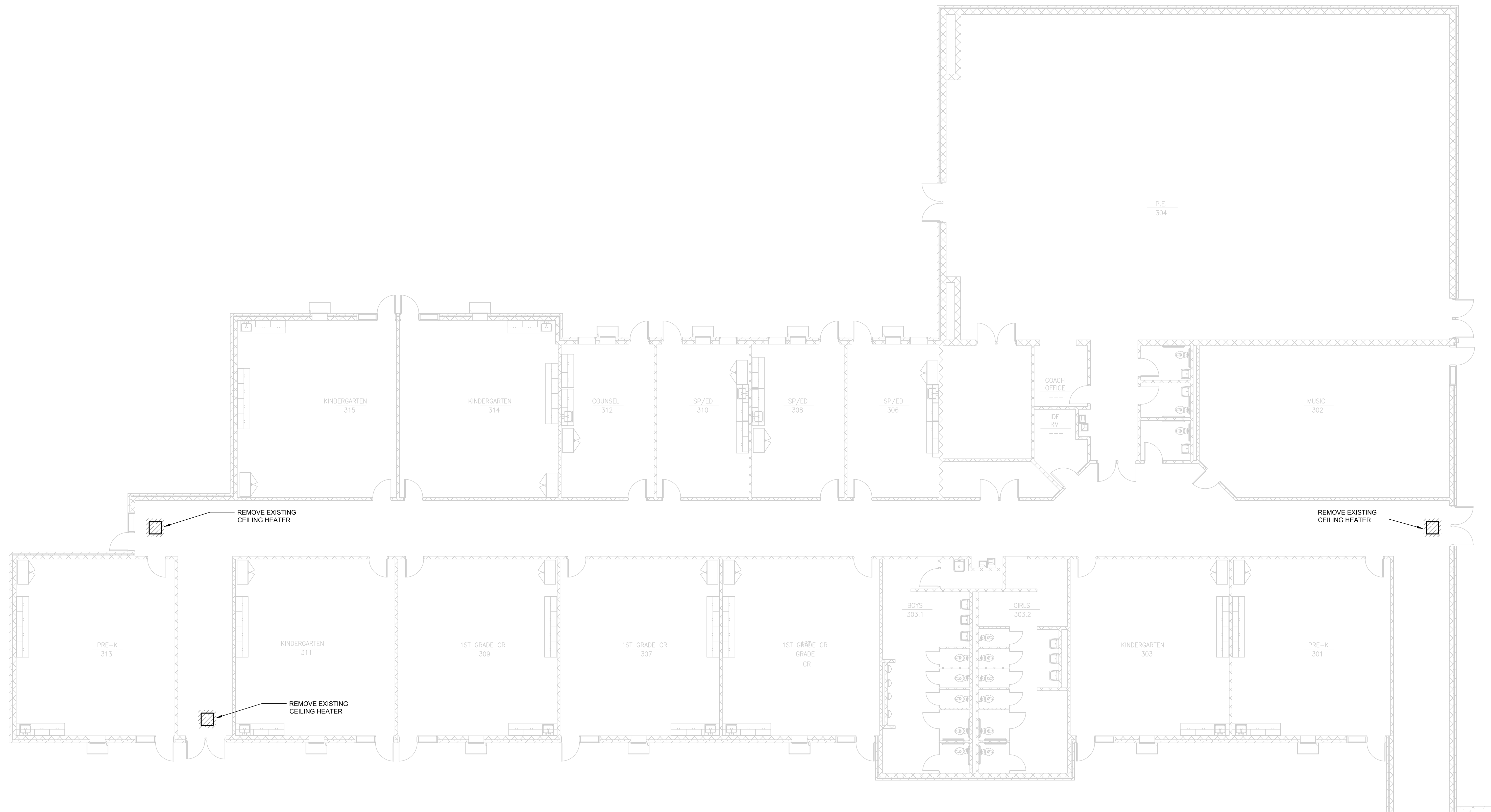
SHEET TITLE
FLOOR PLAN
MECHANICAL DEMOLITION

DATE
APRIL 18, 2017

DRAWN BY
SPJ


CHECKED BY
VMS

SHEET NUMBER
M101



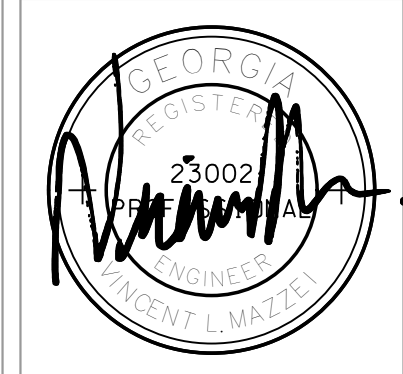
SEE SHEET M101 FOR CONTINUATION

1 BUILDING 2020 FLOOR PLAN - MECHANICAL DEMOLITION - ALTERNATE #2
SCALE: 1/8"=1'-0"




SPDG
Architects and Engineers Inc.

5191 Columbus Rd.
Macon, GA 31206
(P)478.477.7465
(F)478.477.9511
frontdesk@spdesigngrp.com



SPENCER BRISTOL ENGINEERING, INC.
2692 Peachtree Parkway, Suite 100
Norcross, Georgia 30092
Tel: 770-441-6024
Fax: 770-441-6024
SBE Project No. 17004



LOCAL FUNDS ONLY
BIBB BOE BID # 17-26

REVISION

THIS DRAWING IS THE PROPERTY OF SP DESIGN GROUP, ARCHITECTS AND ENGINEERS. IT IS TO BE USED ONLY FOR THE PROJECT AND SITE IDENTIFIED HEREIN AND IS NOT TO BE USED FOR ANY OTHER PROJECT OR FOR ANY OTHER PURPOSE WITHOUT THE WRITTEN AND WITH APPROPRIATE COMPENSATION.

HVAC RENOVATIONS
TO
MATILDA HARTLEY ELEMENTARY
FOR THE BIBB COUNTY BOARD OF EDUCATION
BIBB COUNTY GEORGIA

PROJECT NO.
17-006

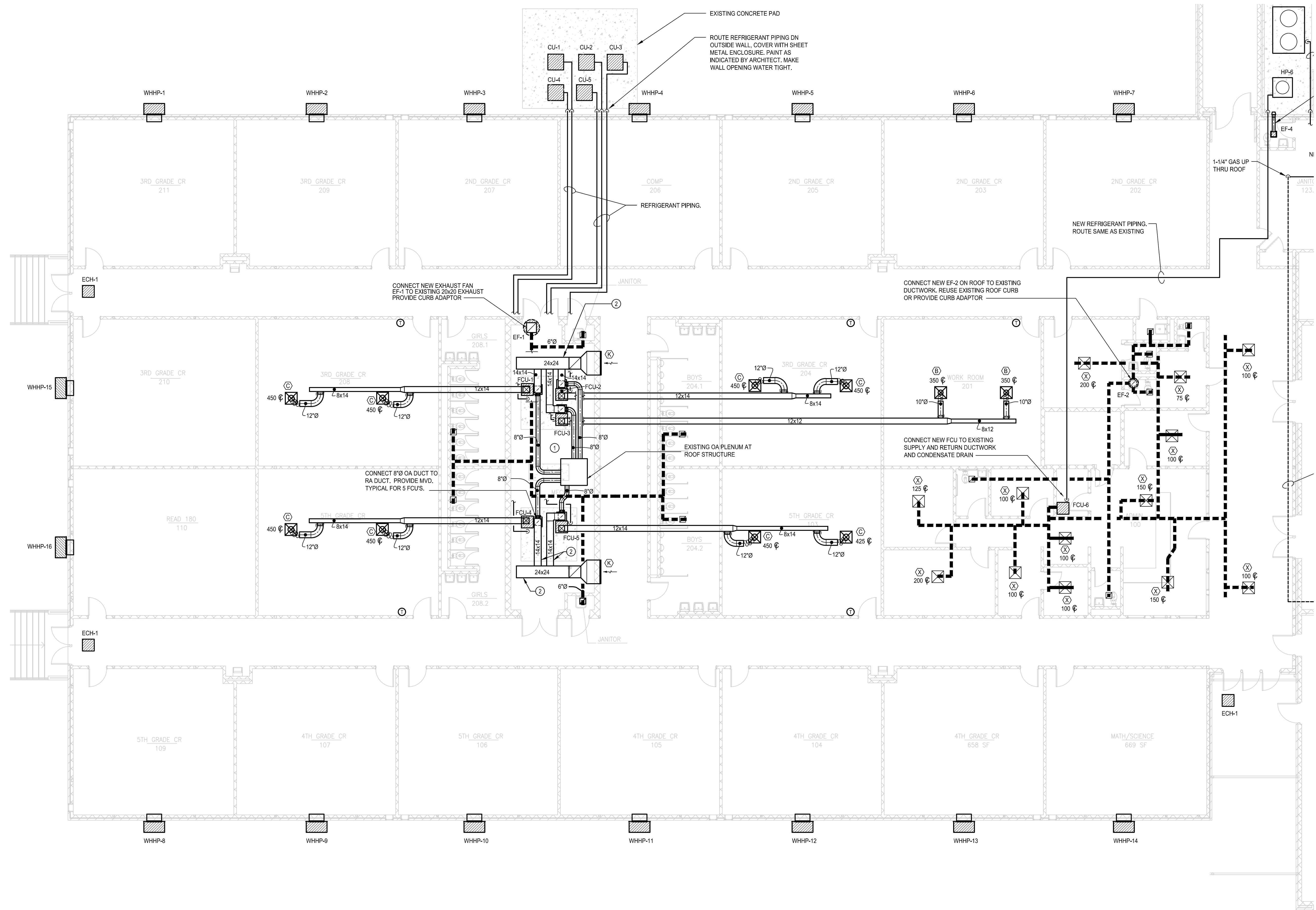
SHEET TITLE
BUILDING 2020 FLOOR
PLAN - MECHANICAL
DEMOLITION -
ALTERNATE #2

DATE
APRIL 18, 2017

DRAWN BY
SPJ

CHECKED BY
VMS

SHEET NUMBER
M102




1 FLOOR PLAN BUILDING 2010 - MECHANICAL RENOVATION
SCALE: 1/8"=1'-0"

FLOOR PLAN NOTES:

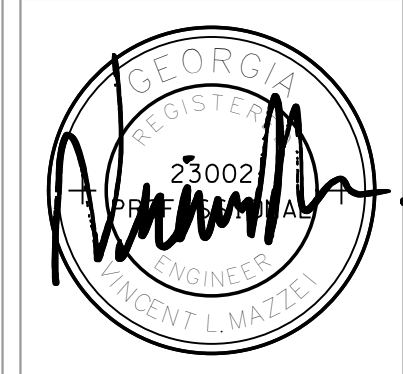
- ① ROUTE NEW 3/4" TRAPPED CONDENSATE DRAINS TO EXISTING FLOOR DRAINS
- ② INSTALL RETURN AIR DUCT AS HIGH AS POSSIBLE

SEE SHEET M202 FOR CONTINUATION




SPDG
Architects and Engineers Inc.

5191 Columbus Rd.
Macon, GA 31206
(P)478.477.7465
(F)478.477.9511
frontdesk@spdesignpr.com



SPENCER BRISTOL ENGINEERING, INC.
2029 Peachtree Parkway, Suite 100
Norcross, Georgia 30092
Tel: 770-441-4024
Fax: 770-441-6024
www.spdesignpr.com
SBE Project No. 17004



LOCAL FUNDS ONLY
BIBB BOE BID # 17-26

REVISION

THIS DRAWING IS THE PROPERTY OF SP DESIGN ENGINEERING, INC. AND ENGINEERS. IT IS TO BE USED ONLY FOR THE PROJECT AND SITE SPECIFICALLY IDENTIFIED HEREON AND IS NOT TO BE USED FOR ANY OTHER PROJECT OR SITE. ANY REUSE OF THIS PROJECT OR REPRODUCTION IN WHOLE OR IN PART, EXCEPT BY PERMISSION IN WRITING AND WITH APPROPRIATE COMPENSATION.

HVAC RENOVATIONS
TO
MATILDA HARTLEY ELEMENTARY
FOR THE BIBB COUNTY BOARD OF EDUCATION
BIBB COUNTY GEORGIA

PROJECT NO.
17-006

SHEET TITLE
MATILDA HARTLEY
FLOOR PLAN
BUILDING 2010 -
MECHANICAL
RENOVATIONS

DATE
APRIL 18, 2017

DRAWN BY
SPJ

CHECKED BY
VMS

SHEET NUMBER
M201



Spencer Bristol Engineering, Inc.
2509 Peachtree Parkway, Suite 100
Norcross, Georgia 30092
Tel: 770-441-6074 Fax: 770-441-6074
www.spdesigngrp.com
SBE Project No. 17004



LOCAL FUNDS ONLY
BIBB BOE BID # 17-26

REVISION

THIS DRAWING IS THE PROPERTY OF SP DESIGN GROUP, ARCHITECTS AND ENGINEERS. IT IS TO BE USED ONLY FOR THE PROJECT AND SITE IDENTIFIED HEREIN AND IS NOT TO BE USED FOR ANY OTHER PROJECTS. ANY REPRODUCTION OF THIS DRAWING IN WHOLE OR IN PART, EITHER BY ELECTRONIC MEANS OR WITH APPROPRIATE COMPENSATION.

HVAC RENOVATIONS
TO
MATILDA HARTLEY ELEMENTARY
FOR THE BIBB COUNTY BOARD OF EDUCATION
BIBB COUNTY GEORGIA

PROJECT NO.
17-006

SHEET TITLE
MATILDA HARTLEY
FLOOR PLAN
BUILDING 2010 -
MECHANICAL
RENOVATIONS

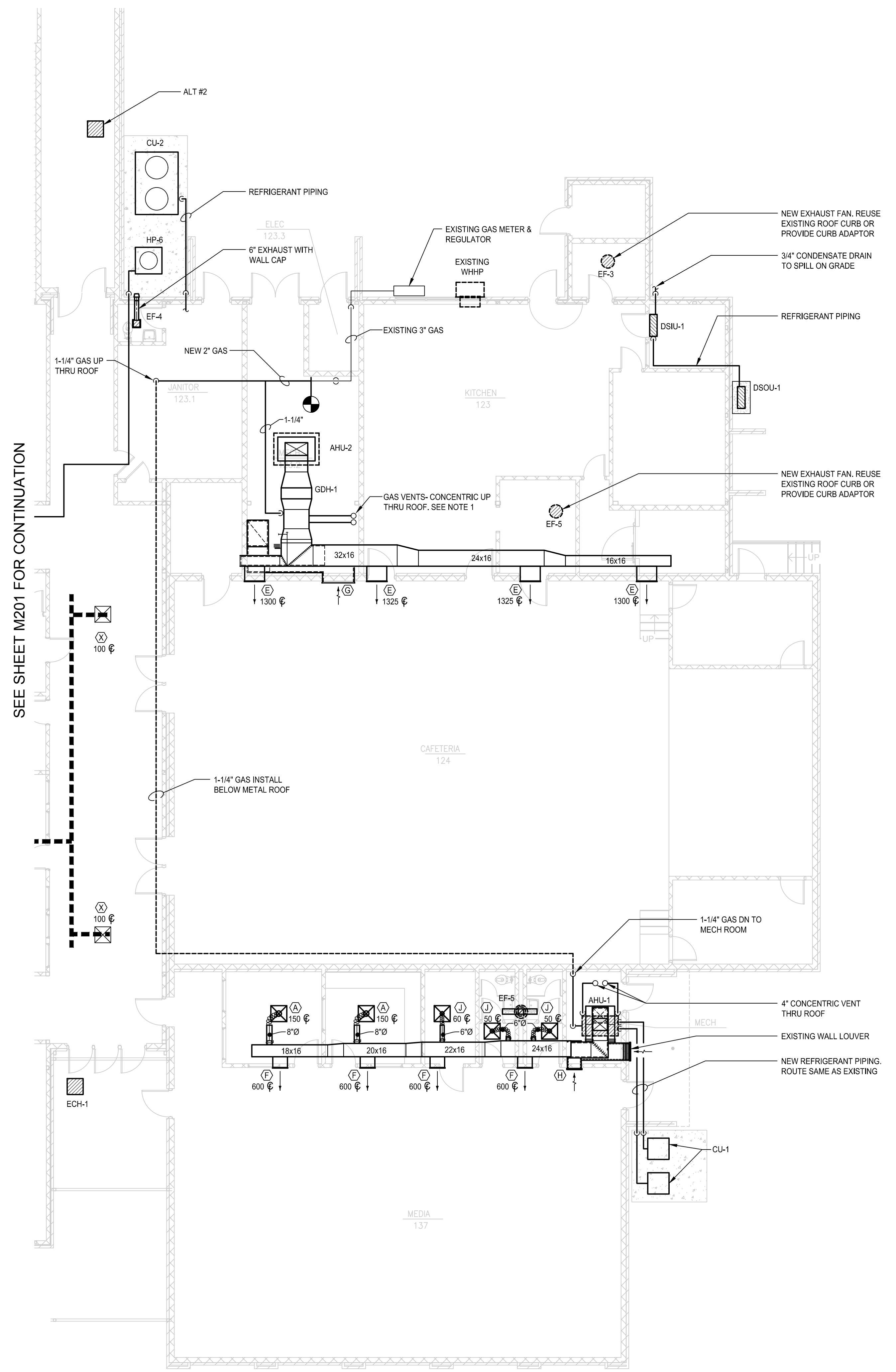
DATE
APRIL 18, 2017

DRAWN BY
SPJ

CHECKED BY
VMS

SHEET NUMBER

M202



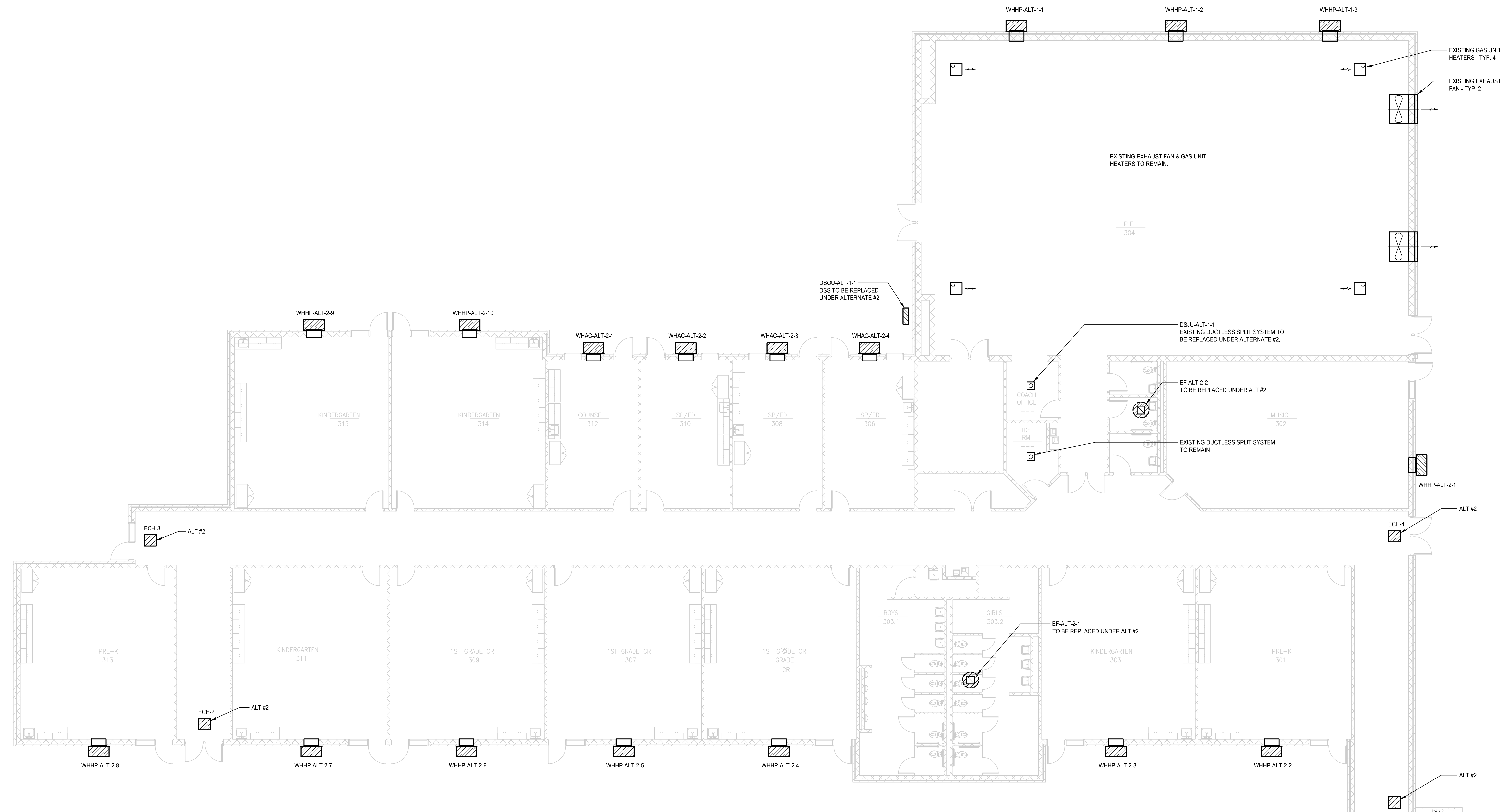
1 FLOOR PLAN BUILDING 2010 - MECHANICAL RENOVATION
SCALE: 1/8"=1'-0"

FLOOR PLAN NOTES:

- ① GAS VENT SHALL TERMINATE MIN 10' AWAY FROM OUTSIDE AIR INTAKES.



THIS DRAWING IS THE PROPERTY OF SP DESIGN ENGINEERING, INC. AND ENGINEERS. IT IS TO BE USED ONLY FOR THE PROJECT AND SITE IDENTIFIED HEREIN AND IS NOT TO BE USED FOR ANY OTHER PROJECT OR SITE WITHOUT THE WRITTEN CONSENT OF SP DESIGN ENGINEERING, INC. AND ENGINEERS. ANY REPRODUCTION OR TRANSMISSION OF THIS PROJECT OR INFORMATION CONTAINED HEREIN WITHOUT THE WRITTEN AND WITH APPROPRIATE COMPENSATION.



SEE SHEET M201 FOR CONTINUATION

1 FLOOR PLAN BUILDING 2020 - MECHANICAL RENOVATION - ALTERNATES #1 & #2
SCALE: 1/8"=1'-0"

NOTES:

- ALTERNATE #1:
INSTALL 3 NEW WALL AIR CONDITIONING UNITS, COOLING ONLY
- ALTERNATE #2:
INSTALL NEW WALL HEAT PUMP UNITS TO REPLACE EXISTING UNITS, AS SCHEDULED AND SHOWN ON PLAN.
REPLACE EXISTING DUCTLESS SPLIT SYSTEM SERVING THE COACH'S OFFICE.
REPLACE CEILING ELECTRIC HEATERS.

WALL HUNG AC/HEAT PUMP SCHEDULE (ALTERNATES #1 & #2)

MARK	BARD MODEL No.	SUPPLY CFM	OA CFM FROM ERV	TOTAL COOLING MBH	SENSIBLE COOLING MBH	HEAT OUTPUT MBH	ELEC HEAT KW	NOTES
WHAC-ALT-1-1	W60AAD15R	1800	350	59.0	43.2	--	--	1,3,5,6,7,8
WHAC-ALT-1-2	W60AAD15R	1800	350	59.0	43.2	--	--	1,3,5,6,7,8
WHAC-ALT-1-3	W60AAD15R	1800	350	59.0	43.2	--	--	1,3,5,6,7,8
WHHP-ALT-2-1	T42S1D809R	1250	270	39.5	29.7	37.3	9.0	1,2,3,4,5,6,7,8
WHHP-ALT-2-2	T24H1D806R	800	200	22.4	18.4	22.2	6.0	1,2,3,4,5,6,7,8
WHHP-ALT-2-3	T24H1D806R	800	200	22.4	18.4	22.2	6.0	1,2,3,4,5,6,7,8
WHHP-ALT-2-4	T24H1D806R	800	200	22.4	18.4	22.2	6.0	1,2,3,4,5,6,7,8
WHHP-ALT-2-5	T24H1D806R	800	200	22.4	18.4	22.2	6.0	1,2,3,4,5,6,7,8
WHHP-ALT-2-6	T24H1D806R	800	200	22.4	18.4	22.2	6.0	1,2,3,4,5,6,7,8
WHHP-ALT-2-7	T24H1D806R	800	200	22.4	18.4	22.2	6.0	1,2,3,4,5,6,7,8
WHHP-ALT-2-8	T24H1D806R	800	200	22.4	18.4	22.2	6.0	1,2,3,4,5,6,7,8
WHHP-ALT-2-9	T24H1D806R	800	200	22.4	18.4	22.2	6.0	1,2,3,4,5,6,7,8
WHHP-ALT-2-10	T24H1D806R	800	200	22.4	18.4	22.2	6.0	1,2,3,4,5,6,7,8
WHAC-ALT-2-1	W12AAA005	475	75	12.0	9.2	--	5.0	1,4,5,7,8
WHAC-ALT-2-2	W12AAA005	475	75	12.0	9.2	--	5.0	1,4,5,7,8
WHAC-ALT-2-3	W12AAA005	475	75	12.0	9.2	--	5.0	1,4,5,7,8
WHAC-ALT-2-4	W12AAA005	475	75	12.0	9.2	--	5.0	1,4,5,7,8

- COOLING CAPACITIES BASED ON AIR ENTERING EVAPORATOR AT 80° Fdb, 67° Fwb AND 95° F AMBIENT AIR TEMPERATURE
- HEAT PUMP HEATING CAPACITY AT 47° F
- PROVIDE HOT GAS REHEAT DEHUMIDIFICATION
- PROVIDE AUXILIARY ELECTRIC HEATER OF CAPACITY SCHEDULED
- PROVIDE REMOTE WALL MOUNTED TEMPERATURE SENSOR
- PROVIDE ENERGY RECOVER VENTILATOR WITH ROTARY CASSETTE
- PROVIDE CARRIER VALV CONTROLS COMPATIBLE WITH SCHOOL'S EXISTING EMS
- PROVIDE INTEGRAL CIRCUIT BREAKER OR DISCONNECT

EXHAUST FAN SCHEDULE (ALT #2)

MARK	GREENHECK MODEL No.	CFM	APPROX. ESP IN. WG	FAN RPM	MOTOR HP	MAX SONES	NOTES
EF-ALT-1-1	G-103-VG	900	0.5	1450	1/6	8.0	2,3,6
EF-ALT-1-2	G-103-VG	225	0.25	1140	1/6	6.0	2,3,6

- CEILING MOUNTED FAN
- DIRECT DRIVE
- PROVIDE DISCONNECT SWITCH
- PROVIDE INLET AND DISCHARGE DUCT CONNECTION FLANGES
- PROVIDE SPRING RUBBER IN-SHEAR ISOLATORS
- PROVIDE NEW ROOF CURB OR CURB ADAPTER IF REQUIRED

DUCTLESS SPLIT SYSTEM SCHEDULE (ALT #2)

MARK	INDOOR UNIT MITSUBISHI MODEL No.	OUTDOOR UNIT MITSUBISHI MODEL No.	EVAP CFM	TOTAL COOLING MBH	TOTAL HEATING MBH	SEER	NOTES
DSJU-ALT-1-1	MSZ-FE09NA	DSOU-ALT-1-1	343	9.0	10.9	26.0	1,2,3,4,5,6,7,8

- COOLING CAPACITIES BASED ON AIR ENTERING EVAPORATOR AT ...°F db, ...°F wb AND ...°F AMBIENT AIR TEMPERATURE
- HEATING CAPACITIES BASED ON REVERSE-CYCLE HEAT PUMP OPERATION AT 47° F AMBIENT AIR TEMPERATURE
- HIGH SIDEWALL INDOOR UNIT
- SUPPLY AIRFLOW CFM BASED ON HIGH SPEED AND DRY COIL
- PROVIDE CONDENSATE PUMP
- PROVIDE LOW AMBIENT CONTROL
- PROVIDE REMOTE WALL MOUNTED THERMOSTAT
- PROVIDE TWO EQUIPMENT SUPPORT RAILS UNDER CONDENSING UNIT



LOCAL FUNDS ONLY
BIBB BOE BID # 17-26

REVISION

THIS DRAWING IS THE PROPERTY OF SPDG GROUP ARCHITECTS AND ENGINEERS, INC. IT IS TO BE USED ONLY FOR THE IDENTIFIED PROJECT AND IS NOT TO BE REPRODUCED OR TRANSMITTED IN ANY FORM OR BY ANY MEANS, ELECTRONIC OR MECHANICAL, INCLUDING PHOTOCOPYING, RECORDING, OR BY ANY INFORMATION STORAGE AND RETRIEVAL SYSTEM, WITHOUT THE WRITTEN PERMISSION OF SPDG GROUP ARCHITECTS AND ENGINEERS, INC.

HVAC RENOVATIONS
TO
MATILDA HARTLEY ELEMENTARY
FOR THE BIBB COUNTY BOARD OF EDUCATION
BIBB COUNTY GEORGIA

PROJECT NO.
17-005

SHEET TITLE

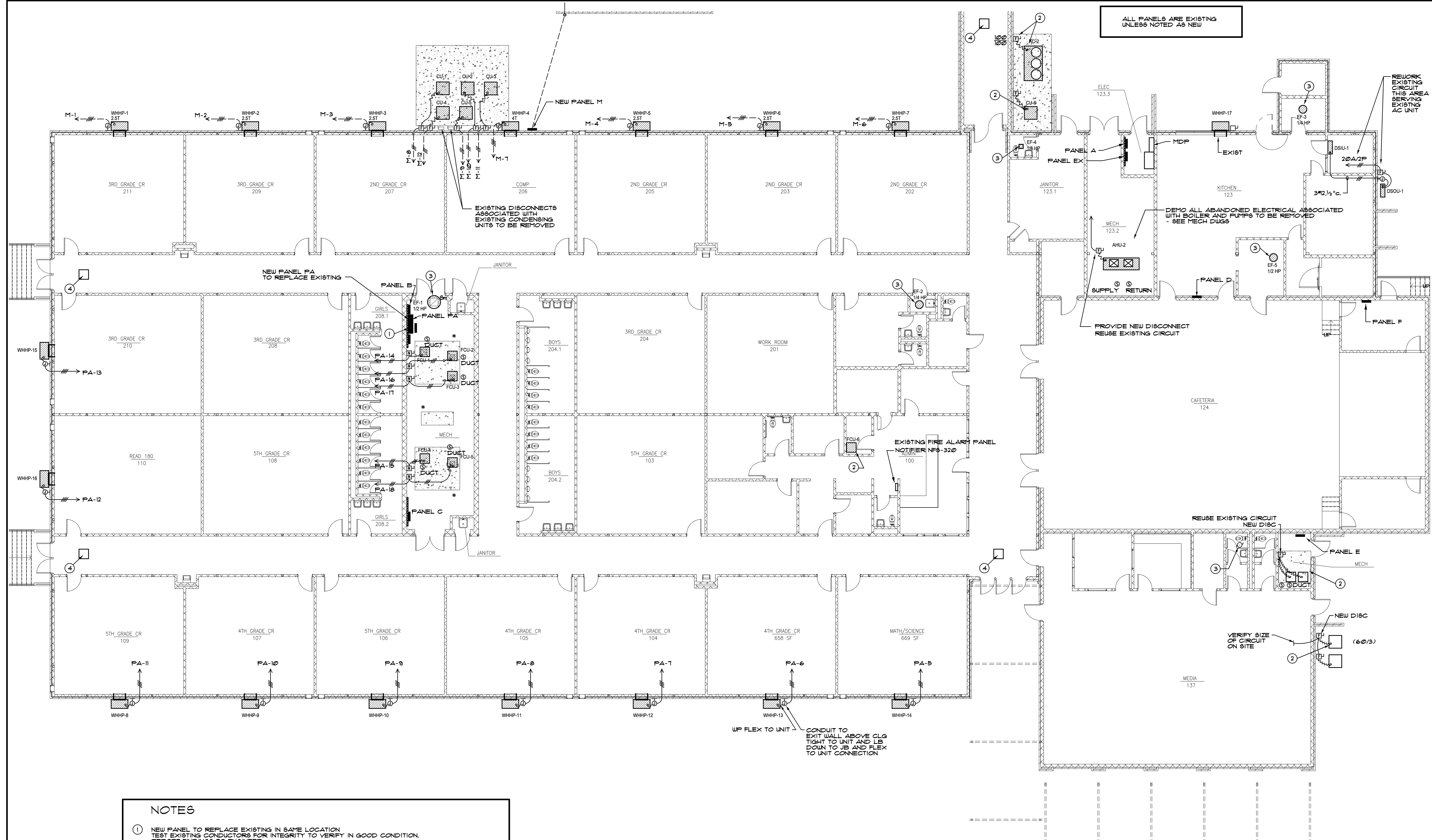
DATE
APRIL 18, 2017

DRAWN BY

CHECKED BY

SHEET NUMBER

E1.1



- NOTES**
- 1 NEW PANEL TO REPLACE EXISTING IN SAME LOCATION. TEST EXISTING CONDUCTORS FOR INTEGRITY TO VERIFY IN GOOD CONDITION. REPORT FINDINGS TO ENGINEER.
 - 2 NEW UNIT IN SAME LOCATION AS EXISTING - REWORK EXISTING POWER SUPPLY AS REQUIRED TO SERVE NEW UNIT - COORDINATE WITH NEW EQUIPMENT PRIOR TO START OF WORK. PROVIDE NEW DISCONNECT SHOWN.
 - 3 NEW EXHAUST FAN TO REPLACE EXISTING IN SAME LOCATION - REWORK EXISTING POWER SUPPLY AS REQUIRED TO SERVE NEW UNIT - COORDINATE WITH NEW EQUIPMENT PRIOR TO START OF WORK.
 - 4 NEW CABINET HEATER TO REPLACE EXISTING IN SAME LOCATION. REUSE EXISTING POWER AND MODIFY AS REQUIRED TO CONNECT TO NEW UNIT.

PANEL PA
EXISTING 800A MLO 208Y/120V 3P,4W
REMOVE EXISTING PANEL
DEMO ALL POWER IN THE SPACE RELATED TO LARGE AHU TO BE REMOVED
SURVEY EXISTING BUS TAPS AND PROVIDE SUB-FEED BREAKERS AS REQUIRED TO MAINTAIN POWER TO THESE DEVICES TO REMAIN
INSTALL NEW PANEL COMPLETE - REUSE EXISTING FEEDERS FROM MDP
MODIFY AS REQUIRED FOR NEW PANEL
SEE SCHEDULE

ELECTRICAL FLOOR PLAN
SCALE 1/8" = 1' - 0"

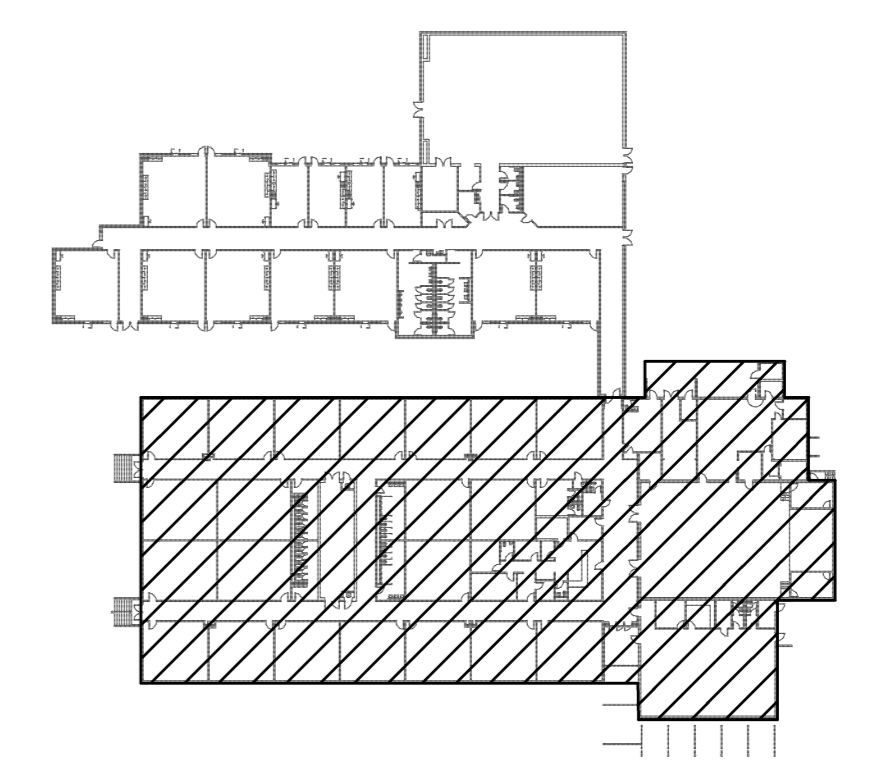
PANELBOARD SCHEDULE

PANEL	CKT #	CIRCUIT BREAKER	SERVICE	KW	WIRE	COND
PA	1	150A/3P	PANEL C	--	**	**
	2	125A/3P	PANEL B	--	**	**
	3	*	LOAD CENTER - 100A	--	*	*
	4	*	LOAD CENTER - 100A	--	*	*
	5-11	40A/3P	WHHP - 8,9,10,11,12,13 & 14	70.0	8	1
	12,13	50A/3P	WHHP - 15 & 16	20.0	8	1
	14-18	40A/3P	FCU - 1 THRU 5	55.0	8	3/4
	19	100A/3P	SPARE	--	--	--
	20-25	20A/1P	SPARES	--	--	--

FIRE ALARM
ADD DEVICES SHOWN
MODIFY/REPROGRAM EXISTING SYSTEM AS REQUIRED

SEE MECHANICAL DEMOLITION PLAN
DEMO ALL ELECTRICAL ASSOCIATED WITH MECH UNITS TO BE REMOVED

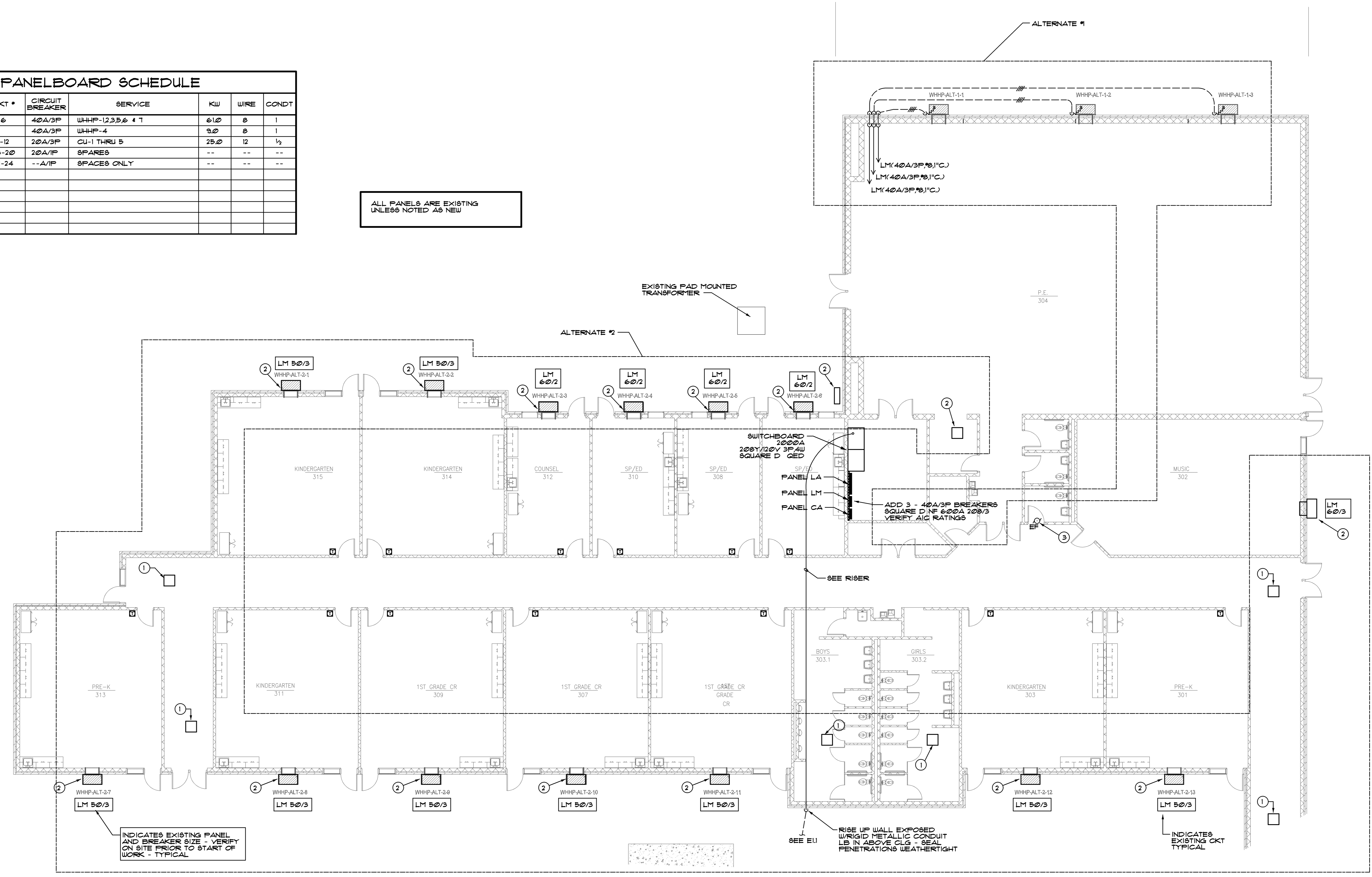
SEE MECHANICAL PLAN - PROVIDE NON-METALLIC SURFACE RACEWAYS AND BOXES AS REQUIRED FOR T-STATS



KEY PLAN
SCALE - NONE

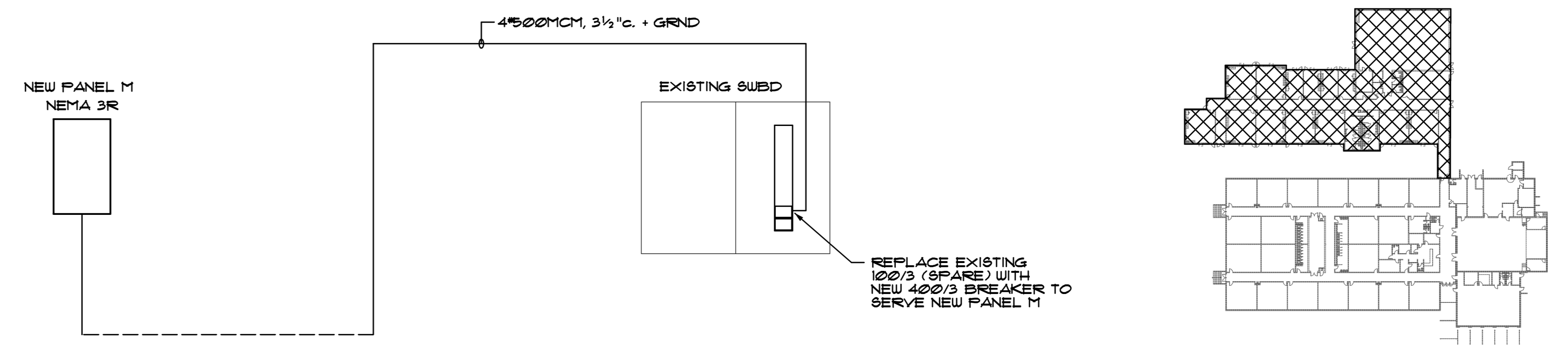
PANELBOARD SCHEDULE						
PANEL	CKT #	CIRCUIT BREAKER	SERVICE	KW	WIRE	COND'T
M	1-6	40A/3P	WHHF-1,2,3,5,6 & 7	61.0	8	1
	7	40A/3P	WHHF-4	9.0	8	1
	8-12	20A/3P	CU-1 THRU 5	25.0	12	1/2
	13-20	20A/1P	SPARES	--	--	--
	21-24	--A/1P	SPACES ONLY	--	--	--
208Y/120V 3P/4W 400A MLO NEMA 3R						

ALL PANELS ARE EXISTING UNLESS NOTED AS NEW

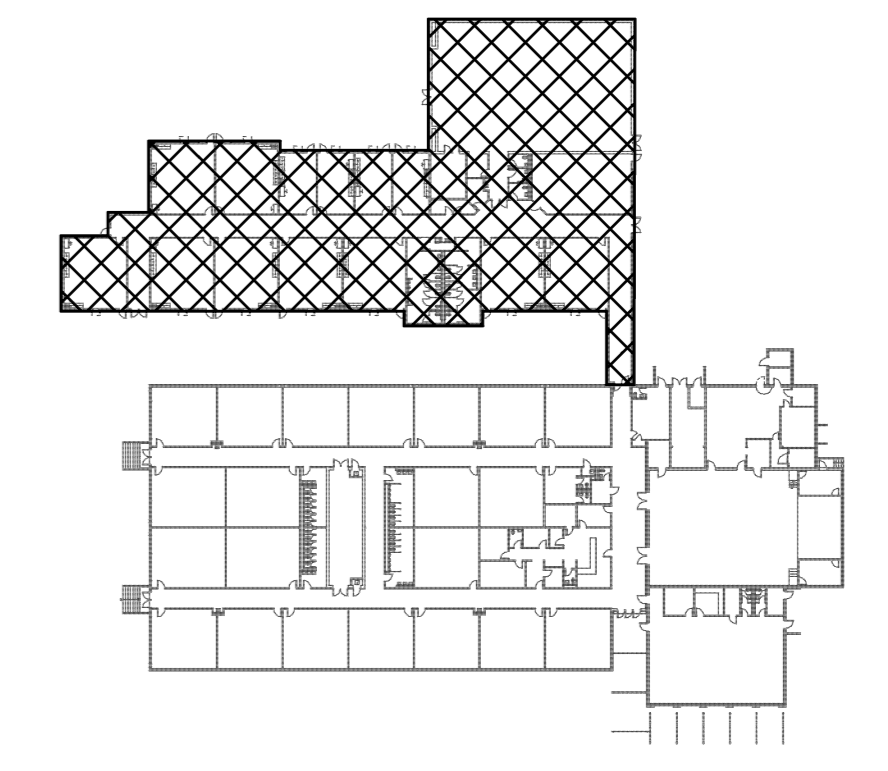


- NOTES**
- 1 NEW CABINET HEATER TO REPLACE EXISTING IN SAME LOCATION. REUSE EXISTING POWER AND MODIFY AS REQUIRED TO CONNECT TO NEW UNIT
 - 2 NEW UNIT IN SAME LOCATION AS EXISTING - REWORK EXISTING POWER SUPPLY AS REQUIRED TO SERVE NEW UNIT - COORDINATE WITH NEW EQUIPMENT PRIOR TO START OF WORK. VERIFY CIRCUIT SERVICE SIZE ON SITE PRIOR TO EQUIPMENT COORDINATION
 - 3 NEW EXHAUST FAN TO REPLACE EXISTING IN SAME LOCATION - REWORK EXISTING POWER SUPPLY AS REQUIRED TO SERVE NEW UNIT - COORDINATE WITH NEW EQUIPMENT PRIOR TO START OF WORK

PARTIAL POWER AND MISC. FLOOR PLAN
SCALE - 1/8"=1'-0"



PARTIAL POWER RISER



KEY PLAN
SCALE - NONE