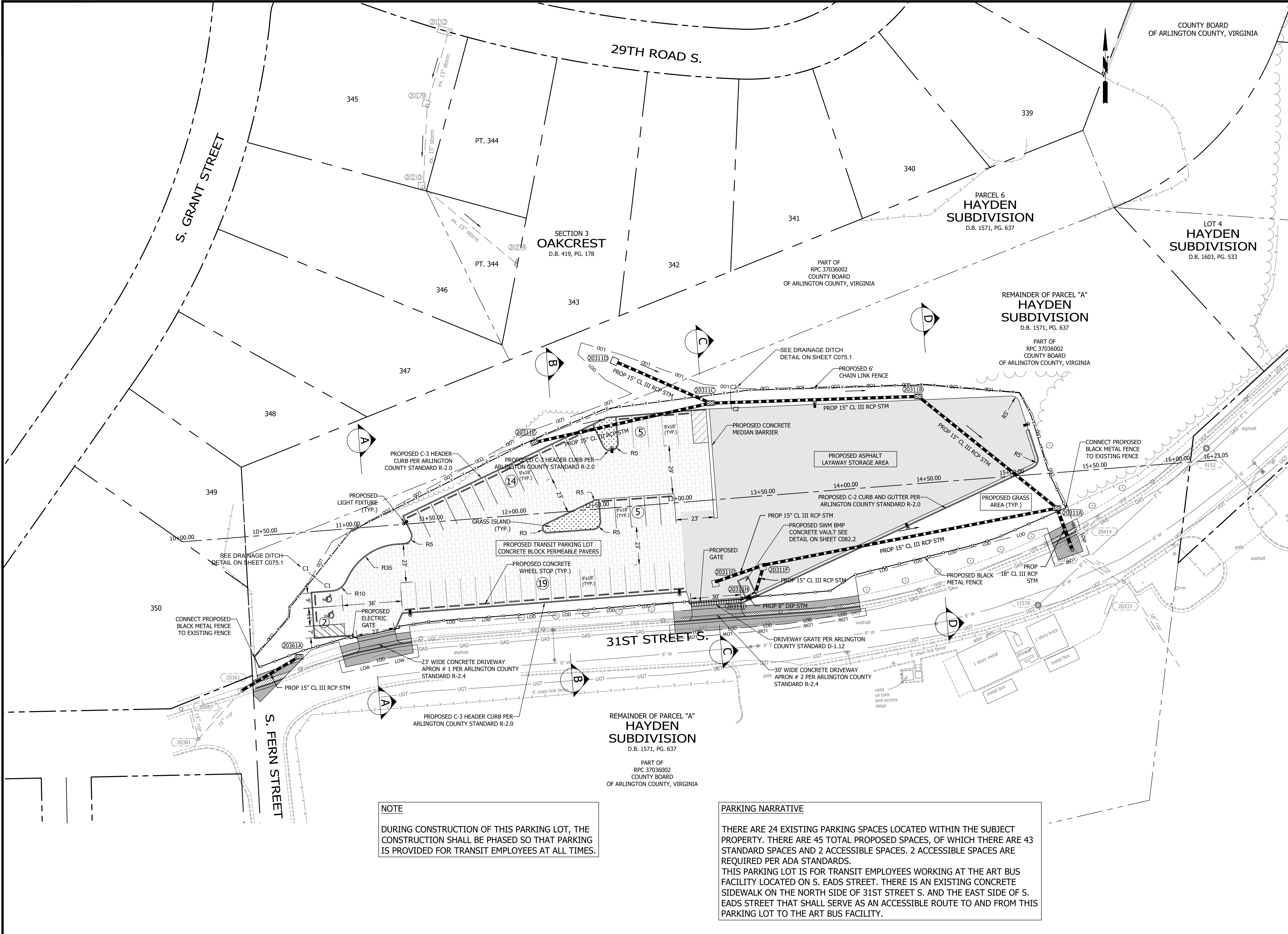


REVISED ON 05/23/2018

FILENAME: WPB5-230-PLAN_PROFILED.WG PATH: Q:\DATA\WPB5\DESIGN\CAD\ACTIVE PLOTTED BY: SBUCKLEY



NOTE

DURING CONSTRUCTION OF THIS PARKING LOT, THE CONSTRUCTION SHALL BE PHASED SO THAT PARKING IS PROVIDED FOR TRANSIT EMPLOYEES AT ALL TIMES.

PARKING NARRATIVE

THERE ARE 24 EXISTING PARKING SPACES LOCATED WITHIN THE SUBJECT PROPERTY. THERE ARE 45 TOTAL PROPOSED SPACES, OF WHICH THERE ARE 43 STANDARD SPACES AND 2 ACCESSIBLE SPACES. 2 ACCESSIBLE SPACES ARE REQUIRED PER ADA STANDARDS.

THIS PARKING LOT IS FOR TRANSIT EMPLOYEES WORKING AT THE ART BUS FACILITY LOCATED ON S. EADS STREET. THERE IS AN EXISTING CONCRETE SIDEWALK ON THE NORTH SIDE OF 31ST STREET S. AND THE EAST SIDE OF S. EADS STREET THAT SHALL SERVE AS AN ACCESSIBLE ROUTE TO AND FROM THIS PARKING LOT TO THE ART BUS FACILITY.

ARLINGTON VIRGINIA

DEPARTMENT OF ENVIRONMENTAL SERVICES
 FACILITIES & ENGINEERING DIVISION
 ENGINEERING BUREAU
 2100 CLARENDON BOULEVARD, SUITE 813
 ARLINGTON, VA 22201
 PHONE: 703.228.3629
 FAX: 703.228.3606

COPYRIGHT © 2016 ARLINGTON COUNTY VIRGINIA - ALL RIGHTS RESERVED

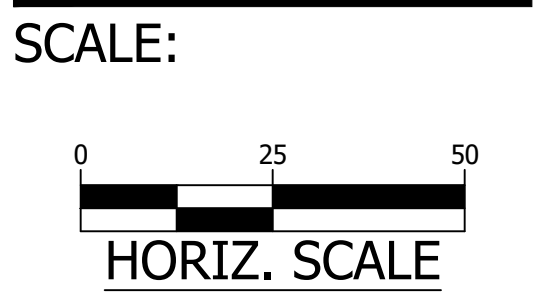


APPROVALS	DATE
QUALITY CONTROL ENGINEER	
CONSTRUCTION MANAGEMENT SUPERVISOR	
WATER, SEWER, STREETS BUREAU CHIEF	
TRANSPORTATION DIRECTOR	
PROJECT MANAGER	

REVISIONS	DATE

31ST STREET S. PARKING LOT
 WPB5
 BETWEEN S. FERN STREET AND S. EADS STREET
 SITE PLAN

DESIGNED: SEB
 DRAWN: SEB
 CHECKED: SWS
 PLOTTED: MARCH 30 2021



SHEET C041.1