



CITY OF CALLAWAY
FIBERGLASS LIFT STATION INSTALLATION
BID NO.: CM2022-01

ADDENDUM #1

Date Issued: January 19, 2022

This addendum is being released due to amend the following:

- A. Contract Documents/Specifications
- B. Construction Plans
- C. Questions & Clarifications

A. CONTRACT DOCUMENTS/SPECIFICATIONS – to ensure the correct technical specifications are used for the bidding process, if a section and/or sentence was modified within the specification, the entire specification was reissued in the Addendum. It's the responsibility of the CONTRACTOR to replace previously issued specifications with the reissued specification attached to this Addendum.

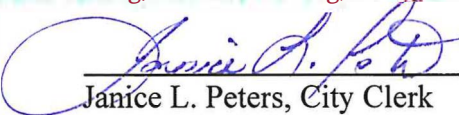
- 1. The Technical Specification Table of Contents was updated to include *Attachment 5 – FDEP Collection System Permit*.
- 2. The Bid Certification Form/Basis of Bid item description and table was updated accordingly. Modifications to the Basis of Bid include removing all 8” Sanitary Sewer Demolition items and updating the 8” Sanitary Sewer Improvement quantities. A complete Replacement of the Bid Certification Form is attached.

B. CONSTRUCTION PLANS - It's the responsibility of the CONTRACTOR to replace previously issued construction plans with the reissued construction plans attached to this Addendum.

- 1. **Sheet C-100:** The existing condition plan was updated accordingly. The City of Callaway removed the sanitary sewer pipe crossing the Callaway Bayou.
- 2. **Sheet C-101:** Abandoned sanitary sewer piping and manhole demolition (i.e. grout fill, open cut removal, etc.) was removed from the project. Construction Key Notes were updated accordingly.
- 3. **Sheet C-900:** Detail C1, Detail for Abandonment of Existing Manhole On Existing Sewer (Not To Remain In Service) was removed from the construction plans.

C. QUESTIONS AND CLARIFICATIONS

- 1. Please advise where the structures to receive the Fabric Formed Concrete are located in the plans.”
 - A. *Specification 31 25 01 Sedimentation and Erosion Control was updated accordingly. Items removed from the specification include: asphalt tackifier, erosion control matting, excelsior matting, and fabric formed concrete erosion.*


Janice L. Peters, City Clerk

This Addendum must be acknowledged and included with the bid packet submission.

Signature

Company Name

Date

A-1

TECHNICAL SPECIFICATION TABLE OF CONTENTS
CITY OF CALLAWAY S. BERTHE AVENUE LIFT STATION & SEWER REHABILITATION

Division	Section Title	Pages
----------	---------------	-------

PROCUREMENT AND CONTRACTING DOCUMENTS GROUP

DIVISION 00 - PROCUREMENT AND CONTRACTING REQUIREMENTS

C-550	NOTICE TO PROCEED	2
C-620	APPLICATION FOR PAYMENT	4
C-625	CERTIFICATE OF SUBSTANTIAL COMPLETION	2
C-941	CHANGE ORDER	2

SPECIFICATIONS GROUP

General Requirements Subgroup

DIVISION 01 - GENERAL REQUIREMENTS

01 07 50	TAX AGREEMENT
01 10 00	SUMMARY
01 25 00	SUBSTITUTION PROCEDURES
01 29 00	PAYMENT PROCEDURES
01 31 00	PROJECT MANAGEMENT AND COORDINATION
01 32 00	CONSTRUCTION PROGRESS DOCUMENTATION
01 32 33	PHOTOGRAPHIC DOCUMENTATION
01 33 00	SUBMITTAL PROCEDURES
01 35 13	SPECIAL CONDITIONS
01 40 00	QUALITY REQUIREMENTS
01 50 00	TEMPORARY FACILITIES AND CONTROLS
01 60 00	PRODUCT REQUIREMENTS
01 73 00	EXECUTION
01 74 19	CONSTRUCTION WASTE MANAGEMENT AND DISPOSAL
01 77 00	CLOSEOUT PROCEDURES
01 78 39	PROJECT RECORD DOCUMENTS

DIVISION 03 - CONCRETE

03 30 00	CAST IN PLACE CONCRETE
03 30 53	MISCELLANEOUS CAST IN PLACE CONCRETE

DIVISION 09 - FINISHES

09 96 36	CHEMICAL-RESISTANT COATINGS FOR MATERIALS IN WASTEWATER FACILITIES
----------	--

DIVISION 26 - ELECTRICAL

26 05 00	COMMON WORK RESULTS FOR ELECTRICAL
26 05 19	LOW-VOLTAGE ELECTRICAL POWER CONDUCTORS AND CABLES
26 05 23	CONTROL-VOLTAGE ELECTRICAL POWER CABLES
26 05 26	GROUNDING AND BONDING FOR ELECTRICAL SYSTEMS

26 05 29	HANGERS AND SUPPORTS FOR ELECTRICAL SYSTEMS
26 05 33	RACEWAYS AND BOXES FOR ELECTRICAL SYSTEMS
26 05 53	IDENTIFICATION FOR ELECTRICAL SYSTEMS
26 27 26	WIRING DEVICES
26 28 16	ENCLOSED SWITCHES AND CIRCUIT BREAKERS

DIVISION 31 - EARTHWORK

31 10 00	SITE CLEARING
31 20 00	EARTH MOVING
31 23 16	EXCAVATION
31 23 17	TRENCHING
31 23 18	DEWATERING
31 23 23	FILL
31 25 01	SEDIMENTATION AND EROSION CONTROL
31 50 00	EXCAVATION SUPPORT AND PROTECTION

DIVISION 32 – EXTERIOR IMPROVEMENTS

32 31 13	CHAIN LINK FENCES AND GATES
----------	-----------------------------

DIVISION 33 - UTILITIES

33 05 07.13	DIRECTIONAL BORING HDPE
33 05 19	PRESSURE PIPING TIED JOINT RESTRAINT SYSTEM
33 11 16	SITE WATER UTILITY DISTRIBUTION PIPING
33 13 00	DISINFECTION OF WATER UTILITY DISTRIBUTION
33 31 00	SANITARY SEWERAGE PIPING

DIVISION 40 – PROCESS INTERCONNECTIONS

40 05 13	LIFT STATION PROCESS PIPE AND FITTINGS
40 05 23-21	PLUG VALVES
40 05 23-72	MISCELLANEOUS PROCESS VALVES
40 05 53	IDENTIFICATION FOR PROCESS PIPING

DIVISION 46 – WATER AND WASTEWATER EQUIPMENT

46 05 53	IDENTIFICATION FOR WATER AND WASTEWATER EQUIPMENT
----------	---

ATTACHMENTS

Attachment 1	FDEP PERMIT
Attachment 2	USACE PERMIT
Attachment 3	GEOTECHNICAL REPORT
Attachment 4	FIBERGLASS WETWELL & COMPONENTS
Attachment 5	FDEP COLLECTION SYSTEM PERMIT

END OF TABLE OF CONTENTS

SECTION 31 25 01 - SEDIMENTATION AND EROSION CONTROL

PART 1 - GENERAL

1.1 SCOPE OF WORK

- A. The CONTRACTOR shall furnish all labor, materials, equipment, and incidentals necessary to perform all installation, maintenance, removal, and area cleanup related to sedimentation control work as shown on the Drawings and as specified herein or as required to prevent the transport of silt or sediment outside the limits of construction. The work shall include, but not necessarily be limited to, installation of temporary access ways and staging areas, silt fences, temporary seeding, turbidity barriers, sediment removal and disposal, device maintenance, removal of temporary devices, temporary mulching, and final cleanup.
- B. The CONTRACTOR shall prepare a Sedimentation and Erosion Control Plan. This plan shall be used as a minimum in developing the Pollution Prevention Plan for the NPDES permit application (notification) to be filed by the CONTRACTOR.

1.2 SUBMITTALS

- A. Within 10 days after award of Contract, the CONTRACTOR shall submit to the ENGINEER for approval, technical product literature for all commercial products to be used for sedimentation and erosion control.

1.3 QUALITY ASSURANCE

- A. The CONTRACTOR shall be responsible for the timely installation and maintenance of all sedimentation control devices necessary to prevent the movement of sediment from the construction site to off-site areas, via surface runoff or underground drainage systems. Measures in addition to those shown on the Drawings necessary to prevent the movement of sediment outside the limits of construction shall be installed, maintained, removed, and cleaned up at the expense of the CONTRACTOR. No additional charges to the OWNER will be considered.
- B. Sedimentation and erosion control measures shall conform to the Best Management Practices outlined in the Drawings and in the Florida Development Manual.

PART 2 - PRODUCTS

2.1 MATERIALS

A. Silt Fence

1. Steel posts shall be a minimum of 5 feet in length, 2-1/2-in by 2-1/2-in by 1/4-in angle post with self-fastening tabs and a 5-in by 4-in (nominal) steel anchor plate at bottom.
2. Welded wire fabric shall be 4-in by 4-in mesh of 12 gauge by 12 gauge steel wire.
3. Silt fence fabric shall be a woven, polypropylene, ultraviolet resistant material such as Mirafi 100X as manufactured by Mirafi, Inc., Charlotte, NC or equal.
4. Tie wires for securing silt fence fabric to wire mesh shall be light gauge metal clips (hog rings), or 1/32-in diameter soft aluminum wire.
5. Prefabricated commercial silt fence may be substituted for built-in-field fence. Pre-fabricated silt fence shall be "Envirofence" as manufactured by Mirafi Inc., Charlotte, NC or approved equal.

B. Turbidity Barriers: Turbidity barriers meeting FDOT Type I and Type II requirements shall be provided. Turbidity barrier may be floating or staked, based on the conditions at the location for installation. Turbidity barrier shall be capable of functioning properly for flow conditions up to a 5 year/24 hour storm event. Turbidity barriers shall be constructed of PVC or polypropylene material, all portions which will be exposed to direct sunlight shall be ultraviolet resistant. All metal components shall be corrosion resistant. Woven materials may be acceptable for installations where high flow conditions may exist during storm events. Turbidity barriers shall be "Mark I", "Mark II", or "PC-2" as manufactured by American Boom & Barrier Corporation, Cape Canaveral, FL or approved equal.

C. Straw mulch shall be utilized on all newly graded areas to protect areas against washouts and erosion. Straw mulch shall be comprised of threshed straw of oats, wheat, barley, rye, or hay that is free from noxious weeds, mold or other objectionable material. The straw mulch shall contain at least 50 percent by weight of material to be 10-in or longer. Straw shall be in an air-dry condition and suitable for placement with blower equipment.

D. Latex acrylic copolymer, such as Soil Sealant with coalescing agent as manufactured by Soil Stabilization Co., Merced, CA or approved equivalent shall be used as straw mulch tackifier.

E. Temporary Grassing: Certain areas of Grassing constructed in accordance with Section 33 31 00 may be designated by the ENGINEER as temporary erosion control features. The ENGINEER may determine that permanent type grass seed be omitted from Grassing and the specified rate of spread for fertilizer used in conjunction with grassing operations be reduced when such work is designated as a temporary erosion control feature.

- F. Baled Hay or Straw: This work shall consist of construction of baled hay or straw dams to protect against downstream accumulations of silt. The baled hay or straw dams shall be constructed in accordance with the details in the FDOT Roadway and Traffic Design Standards. All baled hay or straw utilized shall comply with the provisions of FDOT Specification Section 104 for dry mulch.

PART 3 - EXECUTION

3.1 LOCATION OF SEDIMENT/EROSION CONTROL AND TURBIDITY BARRIERS

- A. At a minimum, sediment/erosion control devices shall be installed at all locations shown on the plans and specified herein.
- B. Sediment/erosion control devices shall be installed at 500 foot intervals along all swales and ditches constructed and around all installed drainage structures prior to placement of sod.
- C. Sediment/erosion control shall be installed along all limits of construction.
- D. CONTRACTOR shall provide additional sediment/erosion control and turbidity barriers as needed to control the transport of silt and sediments outside of the limits of construction.
- E. Sediment/erosion control shall be installed around the base of all soil stockpile areas.
- F. Sediment/erosion control devices shall be installed along the perimeter of all staging areas.
- G. All disturbed areas, greater than one (1) acre, in which construction activities have stopped and are not anticipated to resume for a period of three months or longer shall be temporarily seeded, within five days of stoppage of construction.
- H. All disturbed areas, greater than one (1) acre, in which construction activities have been stopped and are not anticipated to resume for a period of 21 days, but not longer than three months shall be temporarily mulched, within five days of stoppage of construction in accordance with Paragraph 3.4.

3.2 INSTALLATION

- A. Silt Fence Installation
 1. Silt fences shall be positioned as specified indicated on the Drawings and as necessary to prevent movement of sediment produced by construction activities outside of the limits of construction or as approved.
 2. Dig trench approximately 6-in wide and 6-in deep along proposed fence lines.

3. Drive metal-stakes, 8 feet on center (maximum) at back edge of trenches. Stakes shall be driven 2 feet (minimum) into ground.
4. Hang 4 by 4 woven wire mesh on posts, setting bottom of wire in bottom of trench. Secure wire to posts with self-fastening tabs.
5. Hang filter fabric on wire carrying to bottom of trench with about 4-in of fabric laid across bottom of trench. Stretch fabric fairly taut along fence length and secure with tie wires 12-in O.C. both ways.
6. Backfill trench with excavated material and tamp.
7. Install pre-fabricated silt fence according to MANUFACTURER's instructions.

B. Hay Bale Barrier

1. Bales shall be either wire-bound or string-tied with the bindings oriented around the sides rather than over and under the bales.
2. Bales shall be placed lengthwise in a single row with the ends of adjacent bales tightly abutting one another.
3. The barrier shall be entrenched and backfilled. A trench shall be excavated the width of a bale and the length of the proposed barrier to a minimum depth of 4 inches. After bales are staked and chinked, the excavated soil shall be backfilled against the barrier. Backfilled material shall conform to the ground level on the downhill side and shall be built up to 2 inches against the uphill side.
4. Each bale shall be securely anchored by at least two stakes or rebars driven through the bale. The first stake shall be driven toward the previously laid bale to force the bales together. Stakes shall be driven deep enough into the ground to securely anchor the bales.
5. The gaps between each bale shall be chinked (filled by wedging) with straw to prevent water from escaping between the bales.

C. Turbidity Barriers

1. Turbidity barriers should extend the entire depth of the water.
2. Turbidity barriers should not be placed perpendicular to flow. Barriers should be installed at an angle to the flow. Angle should be determined on the amount of flow in the waterway and the MANUFACTURER's recommendation.
3. Turbidity barrier should be 10 to 20 percent longer than the straight line measurement.
4. Joints between panels should be kept to a minimum.
5. Barrier should extend to the top of bank. All ends should be secured firmly to the shoreline.
6. Where significant flow is anticipated, a heavy woven pervious filter fabric may be substituted.

D. Inlet Protection

1. Inlet protection shall be installed for all catch basins, drop inlets, drop structures, inlets to drainage pipes, or other structures.
2. A 5-foot strip of sod shall be laid surrounding the perimeter of each structure.
3. A silt fence or haybale barrier shall be installed around the perimeter of the sodded area.

3.3 MAINTENANCE AND INSPECTIONS

A. Inspections

1. CONTRACTOR shall make a visual inspection of all sedimentation and erosion control devices (including turbidity barriers) once per week and promptly after every rainstorm. If such inspection reveals that additional measures are needed to prevent movement of sediment to areas outside the limits of construction, CONTRACTOR shall promptly install additional devices as needed. Sediment controls in need of maintenance shall be repaired promptly.
2. CONTRACTOR shall keep a log of all inspections indicating the following:
 - a. Date and time of inspection
 - b. Inspector
 - c. Amount of rainfall
 - d. Erosion and sediment control devices inspected
 - e. Condition of sediment and erosion control devices
 - f. Repairs needed
 - g. Date repair is completed

B. Device Maintenance

1. Silt Fences
 - a. Remove accumulated sediment once it builds up to one-half of the height of the fabric.
 - b. Replace damaged fabric, or patch with a 2-ft minimum overlap.
 - c. Make other repairs as necessary to ensure that the fence is filtering all runoff directed to the fence.
2. Hay Bale Barriers
 - a. Remove accumulated sediment once it builds up to one-half of the height of the hay bales.
 - b. Replace damaged hay bales.
 - c. Make other repairs as necessary to ensure that the hay bales are filtering all runoff directed to the barrier.
3. Inlet Protection
 - a. Remove accumulated sediment once it builds up to one-half of the height of the barrier.
 - b. Remove all sediment accumulated within the barrier and replace damaged sod.
 - c. Make other repair as necessary to ensure that the inlet protection device is operating properly.
4. Turbidity Barriers
 - a. Turbidity barriers shall be inspected on a daily basis.
 - b. Replace damaged fabric, or patch with a 2 foot minimum overlap.
 - c. Make other repairs as necessary to ensure barriers are effectively maintaining turbidity levels outside of the barrier within regulatory limits.

3.4 TEMPORARY MULCHING

- A. Apply temporary mulch to areas where rough grading has been completed but final grading is not anticipated to begin within 21 days of the completion of rough grading. If construction activities are not planned to resume for three months or longer, the temporary seeding requirements shall be followed.
- B. Straw mulch shall be applied at rate of 2,000 lbs/acre and tackified with latex acrylic copolymer at a rate of 1 gal/1000 ft² diluted in a ratio of 30 parts water to 1 part latex acrylic copolymer mix.
- C. After temporary mulching, traffic should be kept to a minimum, except for designated temporary access roads.

3.5 REMOVAL AND FINAL CLEANUP

- A. Once the site has been fully stabilized against erosion, remove sediment control devices and all accumulated silt. Dispose of silt and waste materials in proper manner. Regrade all areas disturbed during this process and stabilize against erosion with surfacing materials as indicated on the Drawings or specified herein.

END OF SECTION 31 25 01



FLORIDA DEPARTMENT OF Environmental Protection

Northwest District
160 W. Government Street, Suite 308
Pensacola, Florida 32502-5740
NWD_EPOST@dep.state.fl.us

Ron DeSantis
Governor

Jeanette Nuñez
Lt. Governor

Shawn Hamilton
Secretary

January 14, 2022

BY ELECTRONIC MAIL
citymanager@cityofcallaway.com

NOTIFICATION OF ACCEPTANCE OF USE OF A GENERAL PERMIT

PERMITTEE:	PERMIT NUMBER:	0413247-003-DWC/CG
City of Callaway	ISSUE DATE:	January 14, 2022
By: Eddie Cook	EXPIRATION DATE:	January 13, 2027
City Manager	COUNTY:	Bay
6601 East Hwy 22	PROJECT NAME:	S. Berthe Avenue Lift Station & Sewer Rehabilitation
Panama City, FL 32404	WASTEWATER TREATMENT:	Military Point Regional AWTF
	FACILITY ID:	FL0167959

Dear Mr. Cook:

This letter acknowledges receipt of your *Notification/Application for Constructing a Domestic Wastewater Collection/Transmission System* for the S. Berthe Avenue Lift Station & Sewer Rehabilitation project, 0413247-003-DWC/CG. Our Office received the Notice on January 6, 2022.

This letter is to advise you that the Department does not object to your use of such general permit.

The domestic wastewater collection/transmission system project as permitted will construct a new duplex lift station with SCADA, a doghouse manhole, 65 LF of 8-inch DIP gravity sewer, 370 LF of 4-inch HDPE DR-11 force main, and 210 LF of 4-inch PVC force main to prevent flow from flowing through the Callaway Bayou. The proposed 4-inch force main will tie into an existing 4-inch force main of an existing lift station near Minneola Street.

The wastewater from the newly constructed sewer system will eventually flow to Bay County's Military Point Regional AWTF, FL0167959, for treatment.

PROJECT NAME: S. Berthe Avenue Lift Station & Sewer Rehabilitation
PERMIT NUMBER: 0413247-003-DWC/CG
NOTIFICATION OF ACCEPTANCE OF USE OF A GENERAL PERMIT
Page 2 of 3

The project development site is located on S. Berthe Avenue, north of Fox Lake Drive in Callaway, Bay County, Florida.

The construction shall be in accordance with the construction drawings certified by James Anderson, P.E., on January 6, 2022, for the civil portion of the project and certified by James Tatone, P.E., on January 6, 2022, for the electrical portion of the project.

Please note the attached requirements apply to your use of this general permit for constructing the proposed domestic wastewater collection/transmission system. You are further advised that the construction activity must conform to the description contained in your *Notification/Application for Constructing a Domestic Wastewater Collection/Transmission System* and that any deviation will subject the permittee to enforcement action and possible penalties.

When referring to this project, please use the project name and file number indicated above. If you have any questions, contact Maria Bertelli by email at maria.bertelli@floridadep.gov or by phone at (850) 595-0561

Sincerely,



Katie Ates
Water and Wastewater Permitting Manager

c:

James Anderson, P.E., Baskerville-Donovan, Inc. (janderson@baskervilledonovan.com)

James Tatone, P.E., Ruby Engineering, Inc. (james@rubyelec.com)

Bobby Gibbs, Utility Services Director, Bay County (bgibbs@baycountyfl.gov)

Ralph Miller, Environmental Health Director, FDOH, Bay County
(ralph.miller@flhealth.gov)

Gary Lichtler, OSTDS Supervisor, FDOH Bay County (gary.lichtler@flhealth.gov)

Michael Fuller, DEP NWD Panama City Office (michael.fuller@dep.state.fl.us)

REQUIREMENTS FOR USE OF THE GENERAL PERMIT FOR DOMESTIC WASTEWATER COLLECTION/TRANSMISSION SYSTEMS:

1. This general permit is subject to the general permit conditions of Rule 62-4.540, F.A.C., as applicable. This rule is available at the Department's Internet site at: <http://www.dep.state.fl.us/water/rulesprog.htm#ww> [62-4.540]
2. This general permit does not relieve the permittee of the responsibility for obtaining a dredge and fill permit where it is required. [62-604.600(6)(b)1]
3. This general permit cannot be revised, except to transfer the permit. [62-604.600(6)(b)2]
4. This general permit will expire five years from the date of issuance. If the project has been started and not completed by that time, a new permit must be obtained before the expiration date in order to continue work on the project. [62-4.030]
5. Upon completion of construction of the collection/transmission system project, and before placing the facilities into operation for any purpose other than testing for leaks or testing equipment operation, the permittee shall submit to the Department's District Office Form 62-604.300(8)(b), Notification of Completion of Construction for a Domestic Wastewater Collection/Transmission System. This form is available at the Department's Internet site at: <https://floridadep.gov/water/domestic-wastewater/content/domestic-wastewater-forms> [62-604.700(2)]
6. The new or modified collection/transmission facilities shall not be placed into service until the Department clears the project for use. [62-604.700(3)]
7. Abnormal events shall be reported to the Department's HQ District Office in accordance with Rule 62-604.550, F.A.C. For unauthorized spills of wastewater in excess of 1000 gallons per incident, or where information indicates that public health or the environment may be endangered, oral reports shall be provided to the STATE WATCH OFFICE TOLL FREE NUMBER (800)320-0519 as soon as practical, but no later than 24 hours from the time the permittee or other designee becomes aware of the circumstances. Unauthorized releases or spills less than 1000 gallons per incident are to be reported orally to the Department's HQ District Office within 24 hours from the time the permittee, or other designee becomes aware of the circumstances. [62-604.550]
8. In accordance with Section 403.077, F.S., unauthorized releases or spills reportable to the State Watch Office pursuant to paragraph 7 above shall also be reported to the Department within 24 hours from the time the permittee becomes aware of the discharge. The permittee shall provide to the Department information reported to the State Watch Office. Notice of unauthorized releases or spills may be provided to the Department through the Department's Public Notice of Pollution web page at <https://floridadep.gov/pollutionnotice> or by reporting electronically using the Department's Business Portal at <https://www.fldepportal.com/go/> (via "Submit" followed by "Report" or "Registration/Notification").

BID CERTIFICATION FORM
CITY OF CALLAWAY
FIBERGLASS LIFT STATION INSTALLATION
BID NO: PW2022-01

PROPOSERS CERTIFICATION TO THE CITY OF CALLAWAY:

1. The undersigned warrants that: (A) This Proposal is submitted in response to, and is in compliance with, all terms and conditions applicable thereto as set forth in the Advertisement, Instructions to Proposers, General Instructions and Conditions, Special Instructions and Conditions, Bid/RFP Certification Forms, the Minimum Technical Specifications, Addendum, Exhibits, Agreement, Bonds, and Insurance Requirements, each of which has been carefully examined, (B) Proposer or Proposer’s representative has made such investigation as is necessary to determine the character and extent of the work and their capability to perform the work, and (C) agrees that if the Proposal is accepted by the City, Proposer will provide the necessary labor, materials, machinery, equipment, tools or apparatus, and perform all the work or services required to complete the assignment and/or contract within the time specified according to the requirements of the City as herein and hereinafter set forth, and (D) he/she is authorized to legally execute binding contracts for and on behalf of the Proposer.

2. Please check one:
 - Proposer declares that the only person, persons, company, or parties interested in this Proposal are named in the Proposal.

 - Proposer, or one or more of Proposer’s officers, principals, or any owner of more than 5% in or of proposer, or members of their immediate families: (A) have a financial interest in another company, project, or property that could benefit financially from this proposed project; and/or (B) another individual or business will be compensated by (or on behalf of proposer) if Proposer is selected by the City for the requested services. (Attach a detailed explanation for either.)

3. Bid Bond - If the Proposal is accepted by the City, it will become a binding contract on both parties. If a Bid Bond or Cashier’s Check/Certified Check is required, it shall be submitted with the Proposal. If the undersigned shall fail to deliver or perform, or if applicable, execute a Contract as stated herein, then the City may, at its option, determine that the undersigned has abandoned the Award/Contract, and thereupon such Bid and/or Award shall be null and void, and any Cashier’s Check/Certified Check or Bond accompanying this Bid shall be forfeited to and become the property of the City, and the full amount of said check, or if a Bid Bond, the full amount of such bond, shall be paid to the City as partial liquidated damages; otherwise, any Bond or Cashier’s Check/Certified Check accompanying this Bid shall be returned to the undersigned within 30 calendar days from the date of Award, or if provisions for a Notice to Proceed are included, from the date of the Notice to Proceed.

4. Vendor proposes and agrees to provide all materials, services or equipment required for the City of Callaway **FIBERGLASS LIFT STATION INSTALLATION IMPROVEMENTS BID NO: PW2022-01**, for the Total Sum(s) as follows: (*Totals must match breakdown of costs for each part on next page.*) Dollar Amount (\$ _____)
 Written Amount: _____

5. Number of days from date of the Notice to Proceed that will be required for the final completion of all work as described herein.

(Maximum 180 Calendar Days)

6. The City reserves the right to accept any or all prices itemized in any combination that best serves the interests of the City. The City further reserves the right to accept or reject any of the components of this Proposal, including alternates.

Basis of Bid

1.01 LUMP SUM

- A. Where payment for items is shown to be paid for on a lump sum basis, no separate payment will be made for any item of work required to complete the lump sum item. The lump sum price bid for the various items shown below shall be compensation in full for furnishing all materials, labor, equipment, and incidentals in order to make all components shown within the Contract Documents fully operational. Unless otherwise stated, measurement shall be based upon the Engineer's estimate of percent complete per partial payment period.

General

1. **Bid Item 1 – General Provisions:** The LUMP SUM BID AMOUNT for all work included under this bid item will be made for mobilization and demobilization of all labor, equipment, materials and appurtenances necessary for construction of the project. Mobilization shall include all those operations necessary for the movement of personnel, equipment, supplies, and incidentals to the initial project site, safety equipment and first aid supplies, and sanitary and other facilities. Also included as part of this bid item is the cost for project performance and payment bonds, insurance, indemnifications, photographs, shop drawings, record drawings, project testing (i.e. pressure testing, compaction testing, etc.), project permits (stormwater pollution prevention plan, etc.), schedules, documents, coordination, and phasing and other miscellaneous items associated with the work. Measurement for this bid item will be lump sum. The lump sum price for general provisions will be limited to five percent (5%) of the contract amount. Seventy percent (70%) of the lump sum price will be payable with the first month's partial payment. The remaining thirty (30%) will be payable with the final partial payment.
2. **Bid Item 2 – Lift Station Shoring & Fiberglass Lift Station Installation:** The LUMP SUM BID AMOUNT will be a payment for all labor and material necessary for the Fiberglass Lift Station in accordance with the contract documents. Payment shall include, but not be limited to, shoring material, excavation, backfill, reinforcement, pouring and forming the buoyancy collar, and all other items and incidentals required to construct and install the shoring material required to successfully install the Fiberglass Lift Station. Also, the payment shall include all necessary labor, equipment, and material required to place the Fiberglass Lift Station into the excavated hole. The LUMP SUM BID AMOUNT shall be paid based on the percentages of work completed as approved by the ENGINEER.
3. **Bid Item 3 – Dewatering:** The LUMP SUM BID AMOUNT will be compensation for all labor, equipment, and materials including, but not limited to, surface pumps, sump pumps, well points and header pipe, and trenching/digging machinery. The discharge associated with dewatering requires a permit from FDEP and it is the CONTRACTOR's responsibility to obtain and maintain, including all required valving, sampling, permits during construction. The LUMP SUM BID AMOUNT will be paid based on the percentages of work completed as approved by the ENGINEER.

Site Work & Erosion Control

4. **Bid Item 14 – 12' Whit Vinyl Rolling Access Gate :** The LUMP SUM BID AMOUNT will be compensation for all labor, equipment, and materials necessary for the 12' White Vinyl Rolling Access Gate and all other items and incidentals required to construct and install as shown and described in the contract documents. The LUMP SUM BID AMOUNT shall be paid based on the percentages of work completed as approved by the ENGINEER.

4" Force Main Improvements

5. **Bid Item 31 – ARV Appurtenances (2" Piping, 2" Fittings, & 2" Valves):** The **LUMP SUM BID AMOUNT** will be compensation for all labor, equipment, and materials including, but not limited to, piping, fittings, valves, and all other items and incidentals required to construct and install the air/vacuum release valve as shown and described in the contract documents. The LUMP SUM BID AMOUNT shall be paid based on the percentages of work completed as approved by the ENGINEER.

4" Force Main Connection to Existing Sewer System

6. **Bid Item 38 – Cut/Cap 4" FM & Pump-Out Remaining Sewage in 4" FM:** The **LUMP SUM BID AMOUNT** will be compensation for all labor, equipment, and materials including, but not limited to, piping, fittings, valves, and all other items and incidentals required to construct, install, and operate the sewage pump-out operation as shown and described in the contract documents. Sewage pump out shall be discharged to another collection system manhole, lift station, or Vac Truck. It's the responsibility of the Contractor to understand and implement all local, state, and federal regulator rules during the sewage pump-out operation. The LUMP SUM BID AMOUNT shall be paid based on the percentages of work completed as approved by the ENGINEER.

S. Berthe Avenue Lift Station – Water Service

7. **Bid Item 56 – Wash Down Station:** The **LUMP SUM BID AMOUNT** will be compensation for all labor, equipment, and materials including, but not limited to, piping, fittings, valves, backflow prevention assembly, FRP insulated housing, aluminum post, reinforcing mesh, concrete, hose rack, red rubber hose, and all other items and incidentals required to construct and install the wash down station as shown and described in the contract documents. The LUMP SUM BID AMOUNT shall be paid based on the percentages of work completed as approved by the ENGINEER.

S. Berthe Avenue Lift Station – Appurtenances

8. **Bid Item 59 – 2" SCH 80 CPVC Piping and Fittings:** The **LUMP SUM BID AMOUNT** will be a payment for furnishing and installing the 2" SCH 80 CPVC Piping and Fittings in accordance with the contract documents. Payment shall include, but not be limited to, pipes, fittings, and all other items and incidentals required for construction of the aforementioned appurtenances as shown in the contract documents. The cost shall include all piping and fittings from the ARVs to the Owner-Purchased Lift Station air vent. The LUMP SUM BID AMOUNT shall be paid based on the percentages of work completed as approved by the ENGINEER.
9. **Bid Item 63 – Lift Station Buoyancy Collar:** The **LUMP SUM BID AMOUNT** will be a payment for furnishing and installing the lift station buoyancy collar in accordance with the contract documents. Payment shall include, but not be limited to formwork, reinforcement, concrete, and all other items and incidentals required to construct a fully functional fiberglass wet well buoyancy collar. Fiberglass wet well buoyancy collar shall be constructed per the manufacturer's design. The design for the buoyancy collar can be found in Attachment 4 of the specifications. The LUMP SUM BID AMOUNT shall be paid based on the percentages of work completed as approved by the ENGINEER.

S. Berthe Avenue Lift Station - Electrical

10. **Bid Item 65 – Utility Power Pole & Overhead Service Drop:** The **LUMP SUM BID AMOUNT** will be full compensation for all labor, equipment, and materials required for construction and installation of the electrical components as shown on the contract drawings. This includes, but is not limited to, excavation, concrete, utility power pole, conduit, cables, conductors, panels and other appurtenances to facilitate the operations of the identified equipment based on the mode of operation. The LUMP SUM BID AMOUNT shall be paid based on the percentages of work completed as approved by the ENGINEER.
11. **Bid Item 66 – Electrical Conduit & Fittings:** The **LUMP SUM BID AMOUNT** will be full compensation for all labor, equipment, and materials required for installation of the electrical components as shown on the contract drawings. This includes, but is not limited to, conduits, cables, conductors, switches, panels, instrumentation, grounding risers, fuses, coupling, fittings, concrete, grout, and other appurtenances to facilitate the operations of the identified equipment based on the mode of operation. The LUMP SUM BID AMOUNT shall be paid based on the percentages of work completed as approved by the ENGINEER.

ADDITIVE ALTERNATE 1 - 4" Force Main Connection to Existing Sewer System

12. **Bid Item 68 – Cut & Cap 4" FM & Pump-Out Remaining Sewage in 4" FM:** The **LUMP SUM BID AMOUNT** will be compensation for all labor, equipment, and materials including, but not limited to, piping, fittings, valves, fuel, and all other items and incidentals required to construct, install, and operate the sewage pump-out operation as shown and described in the contract documents. Sewage pump out shall be discharged to another collection system manhole, lift station, or Vac Truck. It's the responsibility of the Contractor to understand and implement all local, state, and federal regulator rules during the sewage pump-out operation. The LUMP SUM BID AMOUNT shall be paid based on the percentages of work completed as approved by the ENGINEER.
13. **Bid Item 70 – Bypass Pumping Required for 4" FM Connection:** The **LUMP SUM BID AMOUNT** will be compensation for all labor, equipment, and materials including, but not limited to, piping, fittings, valves, fuel, and all other items and incidentals required to construct, install, and operate the bypass pumping operation as shown and described in the contract documents. Sewage pump out shall be discharged to another collection system manhole, lift station, or Vac Truck. It's the responsibility of the Contractor to understand and implement all local, state, and federal regulator rules during the bypass pumping operation. The LUMP SUM BID AMOUNT shall be paid based on the percentages of work completed as approved by the ENGINEER.

ADDITIVE ALTERNATE 2 – S. Berthe Avenue Lift Station – 4" FM Connection to Existing Sewer System

14. **Bid Item 75 – Cut & Cap 4" FM & Pump-Out Remaining Sewage in 4" FM:** The **LUMP SUM BID AMOUNT** will be compensation for all labor, equipment, and materials including, but not limited to, piping, fittings, valves, fuel, and all other items and incidentals required to construct, install, and operate the sewage pump-out operation as shown and described in the contract documents. Sewage pump out shall be discharged to another collection system manhole, lift station, or Vac Truck. It's the responsibility of the Contractor to understand and implement all local, state, and federal regulator rules during the sewage pump-out operation. The LUMP SUM AMOUNT BID shall be paid based on the percentages of work completed as approved by the ENGINEER.

15. **Bid Item 76 – Bypass Pumping Required for 4” FM Connection:** The LUMP SUM BID AMOUNT will be compensation for all labor, equipment, and materials including, but not limited to, piping, fittings, valves, fuel, and all other items and incidentals required to construct, install, and operate the bypass pumping operation as shown and described in the contract documents. Sewage pump out shall be discharged to another collection system manhole, lift station, or Vac Truck. It's the responsibility of the Contractor to understand and implement all local, state, and federal regulator rules during the bypass pumping operation. The LUMP SUM AMOUNT BID shall be paid based on the percentages of work completed as approved by the ENGINEER.

1.02 Unit Price

- A. Where payment for items is shown on a unit price basis, payment will be made for the actual quantity installed and will include all labor, material, and equipment necessary for such. For all installed and demolished pipe quantities to be paid for under this section shall be based on the diameter and the horizontal distance (i.e. gravity pipe, force main pipe, and directional drill pipe) in linear feet of pipe measured along the top centerline of the pipe in place complete and acceptable to the Engineer with deduction for the laid length of valves and fittings.

Site Work & Erosion Control

1. **Bid Item 4 – Site Clearing & Grubbing:** The UNIT PRICE BID AMOUNT will be payment for all labor, materials, and equipment necessary for clearing, grubbing, hauling away, and proper disposal of debris in accordance with the contract documents. The UNIT PRICE BID AMOUNT shall be paid based on the measured acreage of clearing and grubbing of the Lift Station site during the requested period as approved by the ENGINEER.
2. **Bid Item 5 – Grading/Fill:** The UNIT PRICE BID AMOUNT will be compensation for all labor, equipment, and materials necessary for site work, select fill, earthwork, excavation, backfilling, and compaction as shown and described in the contract documents. The UNIT PRICE BID AMOUNT shall be paid based on the measured fill material used during the requested period as approved by the ENGINEER.
3. **Bid Item 6 – Silt Fence:** The UNIT PRICE BID AMOUNT will be compensation for all labor, equipment, and materials necessary for trenching, staking, and silt fence material as shown and described in the contract documents. The UNIT PRICE BID AMOUNT shall be paid based on the measured silt fence material used during the requested period as approved by the ENGINEER.
4. **Bid Item 7 – Sidewalk Repair:** The UNIT PRICE BID AMOUNT will be compensation for all labor, equipment, and materials necessary for demolition, earthwork, formwork, reinforcement, concrete, joints, cutting, finishing, compaction, and backfilling as shown and described in the contract documents. The UNIT PRICE BID AMOUNT shall be paid based on the measured concrete material used during the requested period as approved by the ENGINEER.
5. **Bid Item 8 – Asphalt Roadway Repair:** The UNIT PRICE BID AMOUNT will be compensation for all labor, equipment, and materials necessary for site work, select fill, demolition, saw cutting, milling, earthwork, excavation, paving, backfilling, and compaction as shown and described in the contract documents. The UNIT PRICE BID AMOUNT shall be paid based on the measured asphalt material used during the requested period as approved by the ENGINEER.

6. **Bid Item 9 – Temporary Access Road (6” Type A Compacted Base):** The UNIT PRICE BID AMOUNT will be compensation for all labor, equipment, and materials necessary for site work, select fill, earthwork, excavation, backfilling, and compaction as shown and described in the contract documents. The UNIT PRICE BID AMOUNT shall be paid based on the measured Type A compact base material used during the requested period as approved by the ENGINEER.
7. **Bid Item 10 – Sod (Bahia):** The UNIT PRICE BID AMOUNT will be compensation for all labor, equipment, and materials necessary for site work, earthwork, sodding, staking, and watering as shown and described in the contract documents. The UNIT PRICE BID AMOUNT shall be paid based on the measured sod (Bahia) material used during the requested period as approved by the ENGINEER.
8. **Bid Item 11 – Geotextile Fabric:** The UNIT PRICE BID AMOUNT will be compensation for all labor, equipment, and materials necessary for site work, earthwork, trenching, backfilling, and staking for geotextile fabric as shown and described in the contract documents. The UNIT PRICE BID AMOUNT shall be paid based on the measured geotextile fabric material used during the requested period as approved by the ENGINEER.
9. **Bid Item 12 – 6” Granite #57 Stone:** The UNIT PRICE BID AMOUNT will be compensation for all labor, equipment, and materials necessary for the installation of 6” Granite #57 stone as shown and described in the contract documents. The UNIT PRICE BID AMOUNT shall be paid based on the measured granite #57 stone material used during the requested period as approved by the ENGINEER.
10. **Bid Item 13 – 6’ Tall White Vinyl Privacy Fence:** The UNIT PRICE BID AMOUNT will be compensation for all labor, equipment, and materials necessary for site work, earthwork, excavation, backfilling, compaction, concrete, barb wire, and white vinyl fence as shown and described in the contract documents. The UNIT PRICE BID AMOUNT shall be paid based on the measured white vinyl privacy fence material used during the requested period as approved by the ENGINEER.
11. **Bid Item 15 – Concrete Access Drive & Generator Pad:** The UNIT PRICE BID AMOUNT will be compensation for all labor, equipment, and materials necessary for site work, earthwork, excavation, reinforcement, formwork, concrete, finishing, backfilling compaction as shown and described in the contract documents. The UNIT PRICE BID AMOUNT shall be paid based on the measured concrete material used during the requested period as approved by the ENGINEER.
12. **Bid Item 16 – Concrete Lift Station Pad:** The UNIT PRICE BID AMOUNT will be compensation for all labor, equipment, and materials necessary for site work, earthwork, excavation, backfilling, compaction, vapor barriers, reinforcement, concrete, formwork, finishing, and testing as shown and described in the contract documents. The UNIT PRICE BID AMOUNT shall be paid based on the measured fill material used during the requested period as approved by the ENGINEER.

Storm Sewer Improvements

13. **Bid Item 17 – Temporary 36” RCP:** The UNIT PRICE BID AMOUNT will be full compensation for all labor, materials, and equipment necessary to construct, install, maintain, and all other cost required to install the temporary 36” RCP as described herein and within the contract documents, complete as shown on the Plans, specified, and directed by the Engineer. The UNIT PRICE BID AMOUNT consisting of pipe quantities to be paid for under this section shall be based on the diameter and the horizontal/vertical distance in linear feet of pipe measured along the top centerline of the pipe in place complete and acceptable to the ENGINEER.

8" Sanitary Sewer Improvements

14. **Bid Item 18 – 8" DIP:** The **UNIT PRICE BID AMOUNT** will be full compensation for all labor, materials, and equipment necessary to construct, install, maintain, and all other cost required to install the 8" DIP as described herein and within the contract documents, complete as shown on the plans, specified, and directed by the Engineer. The UNIT PRICE BID AMOUNT consisting of pipe quantities to be paid for under this section shall be based on the diameter and the horizontal/vertical distance in linear feet of pipe measured along the top centerline of the pipe in place complete and acceptable to the ENGINEER.
15. **Bid Item 19 – Sewer Manhole (Doghouse):** The **UNIT PRICE BID AMOUNT** will be full compensation for all labor, materials, and equipment necessary to construct, install, maintain, and all other cost required to install the Doghouse Sewer Manhole as described herein and within the contract documents, complete as shown on the plans, specified, and directed by the Engineer. The UNIT PRICE BID AMOUNT shall be paid based on the number of units installed during the requested period as approved by the ENGINEER.
16. **Bid Item 20 – 8" Permanent Plug:** The **UNIT PRICE BID AMOUNT** will be full compensation for all labor, materials, and equipment necessary to construct, install, maintain, and all other cost required to install the 8" Permanent Plug as described herein and within the contract documents, complete as shown on the plans, specified, and directed by the Engineer. The UNIT PRICE BID AMOUNT shall be paid based on the number of units installed during the requested period as approved by the Engineer.
17. **Bid Item 21 – 8" FRP Sleeve:** The **UNIT PRICE BID AMOUNT** will be full compensation for all labor, materials, and equipment necessary to construct, install, maintain, and all other cost required to install the 8" FRP Sleeve as described herein and within the contract documents, complete as shown on the plans, specified, and directed by the Engineer. The UNIT PRICE BID AMOUNT shall be paid based on the number of units installed during the requested period as approved by the Engineer.

4" Force Main Improvements

18. **Bid Item 22 – 4" HDPE DR11 via Directional Drill:** The **UNIT PRICE BID AMOUNT** will be full compensation for all labor, materials, and equipment necessary to construct, install, maintain, and all other cost required to install the 4" HDPE DR11 via directional drill as described herein and within the contract documents, complete as shown on the plans, specified, and directed by the Engineer. The UNIT PRICE BID AMOUNT consisting of pipe quantities to be paid for under this section shall be based on the diameter and the horizontal/vertical distance in linear feet of pipe measured along the top centerline of the pipe in place complete and acceptable to the ENGINEER.
19. **Bid Item 23 – 4" PVC – DR25:** The **UNIT PRICE BID AMOUNT** will be full compensation for all labor, materials, and equipment necessary to construct, install, maintain, and all other cost required to install the 4" PVC – DR25 as described herein and within the contract documents, complete as shown on the plans, specified, and directed by the Engineer. The UNIT PRICE BID AMOUNT consisting of pipe quantities to be paid for under this section shall be based on the diameter and the horizontal/vertical distance in linear feet of pipe measured along the top centerline of the pipe in place complete and acceptable to the ENGINEER.

20. **Bid Item 24 – 4” DIP MJ Tee:** The UNIT PRICE BID AMOUNT will be full compensation for all labor, materials, and equipment necessary to construct, install, maintain, and all other cost required to install the 4” DIP MJ Tee as described herein and within the contract documents, complete as shown on the plans, specified, and directed by the Engineer. The UNIT PRICE BID AMOUNT shall be paid based on the number of units installed during the requested period as approved by the ENGINEER.
21. **Bid Item 25 – 4” x 2” MJ Plug Valve:** The UNIT PRICE BID AMOUNT will be full compensation for all labor, materials, and equipment necessary to construct, install, maintain, and all other cost required to install the 4” x 2” MJ Plug Valve as described herein and within the contract documents, complete as shown on the plans, specified, and directed by the Engineer. The UNIT PRICE BID AMOUNT shall be paid based on the number of units installed during the requested period as approved by the ENGINEER.
22. **Bid Item 26 – 4” DIP MJ 90-Degree Fitting:** The UNIT PRICE BID AMOUNT will be full compensation for all labor, materials, and equipment necessary to construct, install, maintain, and all other cost required to install the 4” DIP MJ 90-Degree Fittings as described herein and within the contract documents, complete as shown on the plans, specified, and directed by the Engineer. The UNIT PRICE BID AMOUNT shall be paid based on the number of units installed during the requested period as approved by the ENGINEER.
23. **Bid Item 27 – 4” DIP MJ 45-Degree Fitting:** The UNIT PRICE BID AMOUNT will be full compensation for all labor, materials, and equipment necessary to construct, install, maintain, and all other cost required to install the 4” DIP MJ 45-Degree Fitting as described herein and within the contract documents, complete as shown on the plans, specified, and directed by the Engineer. The UNIT PRICE BID AMOUNT shall be paid based on the number of units installed during the requested period as approved by the ENGINEER.
24. **Bid Item 28 – PVC to HDPE Transition Fitting:** The UNIT PRICE BID AMOUNT will be full compensation for all labor, materials, and equipment necessary to construct, install, maintain, mechanical restraints, reinforcement, concrete and all other cost required to install the PVC to HDPE Transition Fittings as described herein and within the contract documents, complete as shown on the plans, specified, and directed by the Engineer. The UNIT PRICE BID AMOUNT shall be paid based on the number of units installed during the requested period as approved by the ENGINEER.
25. **Bid Item 29 – ARV Manhole:** The UNIT PRICE BID AMOUNT will be full compensation for all labor, materials, and equipment necessary to construct, install, maintain, excavate, backfill, crush aggregate, concrete, reinforcement, water lock manhole lid/frame, and all other cost required to install the ARV Manhole as described herein and within the contract documents, complete as shown on the plans, specified, and directed by the Engineer. The UNIT PRICE BID AMOUNT shall be paid based on the number of units installed during the requested period as approved by the ENGINEER.
26. **Bid Item 30 – ARV:** The UNIT PRICE BID AMOUNT will be full compensation for all labor, materials, and equipment necessary to construct, install, maintain, and all other cost required to install the ARV as described herein and within the contract documents, complete as shown on the plans, specified, and directed by the Engineer. The UNIT PRICE BID AMOUNT shall be paid based on the number of units installed during the requested period as approved by the ENGINEER.

27. **Bid Item 32 – ARV Enclosure:** The UNIT PRICE BID AMOUNT will be full compensation for all labor, materials, and equipment necessary to construct, install, maintain, and all other cost required to install the ARV enclosure as described herein and within the contract documents, complete as shown on the plans, specified, and directed by the Engineer. The UNIT PRICE BID AMOUNT shall be paid based on the number of units installed during the requested period as approved by the ENGINEER.
28. **Bid Item 33 – Bollards:** The UNIT PRICE BID AMOUNT will be full compensation for all labor, materials, and equipment necessary to construct, install, maintain, excavation, backfill, concrete, and all other cost required to install the bollards as described herein and within the contract documents, complete as shown on the plans, specified, and directed by the Engineer. The UNIT PRICE BID AMOUNT shall be paid based on the number of units installed during the requested period as approved by the ENGINEER.
29. **Item 34 – Piping/Fitting for Existing Utility Conflict:** The UNIT PRICE BID AMOUNT will be full compensation for all labor, materials, and equipment necessary to construct, install, maintain, and all other cost required to install additional piping and fittings around the existing lift station water service and sanitary sewer, if required, as described herein and within the contract documents, complete as shown on the plans, specified, and directed by the Engineer. The UNIT PRICE BID AMOUNT shall be paid based on the number of units installed during the requested period as approved by the ENGINEER.

4" Force Main Connection to Existing Sewer System

30. **Item 35 – 4" Tapping Sleeve & Valve w/ Valve Box:** The UNIT PRICE BID AMOUNT will be full compensation for all labor, materials, and equipment necessary to construct, install, maintain, and all other cost required to install a 4" Tapping Sleeve & Valve w/ Valve Box as described herein and within the contract documents, complete as shown on the plans, specified, and directed by the Engineer. The UNIT PRICE BID AMOUNT shall be paid based on the number of units installed during the requested period as approved by the ENGINEER.
31. **Item 36 – 4" Line Stop:** The UNIT PRICE BID AMOUNT will be full compensation for all labor, materials, and equipment necessary to construct, install, maintain, and all other cost required to install a 4" Line Stop as described herein and within the contract documents, complete as shown on the plans, specified, and directed by the Engineer. The UNIT PRICE BID AMOUNT shall be paid based on the number of units installed during the requested period as approved by the ENGINEER.
32. **Item 37 – 4" MJ Plug** The UNIT PRICE BID AMOUNT will be full compensation for all labor, materials, and equipment necessary to construct, install, maintain, and all other cost required to install a 4" MJ Plug as described herein and within the contract documents, complete as shown on the plans, specified, and directed by the Engineer. The UNIT PRICE BID AMOUNT shall be paid based on the number of units installed during the requested period as approved by the ENGINEER.

S. Berthe Avenue Lift Station – Piping, Valves, & Fittings

33. **Bid Item 39 – 4” 316 Stainless Steel Piping:** The **UNIT PRICE BID AMOUNT** will be full compensation for all labor, materials, and equipment necessary to construct, install maintain, and all other cost required to install the 4” 316 Stainless Steel Piping as described herein and within the contract documents, complete as shown on the plans, specified, and directed by the Engineer. The pipe quantities to be paid for under this section shall be based on the diameter and the horizontal/vertical distance in linear feet of pipe measured along the top centerline of the pipe in place complete and acceptable to the Engineer with deduction for the laid length of valves and fittings. The UNIT PRICE BID AMOUNT shall be paid based on the measured length of pipe installed during the requested period as approved by the ENGINEER.
34. **Bid Item 40 – 4” PVC – DR25:** The **UNIT PRICE BID AMOUNT** will be full compensation for all labor, materials, and equipment necessary to construct, install maintain, and all other cost required to install the 4” PVC – DR25 piping as described herein and within the contract documents, complete as shown on the Plans, specified, and directed by the Engineer. The pipe quantities to be paid for under this section shall be based on the diameter and the horizontal/vertical distance in linear feet of pipe measured along the top centerline of the pipe in place complete and acceptable to the Engineer with deduction for the laid length of valves and fittings. The UNIT PRICE BID AMOUNT shall be paid based on the measured length of pipe installed during the requested period as approved by the ENGINEER.
35. **Bid Item 41 – 4” FL Check Valve:** The **UNIT PRICE BID AMOUNT** will be full compensation for all labor, materials, and equipment necessary to construct, install, maintain, and all other cost required to install the 4” FL Check Valves as described herein and within the contract documents, complete as shown on the plans, specified, and directed by the Engineer. The UNIT PRICE BID AMOUNT shall be paid based on the number of units installed during the requested period as approved by the ENGINEER.
36. **Bid Item 42 – 4” FL Plug Valve:** The **UNIT PRICE BID AMOUNT** will be full compensation for all labor, materials, and equipment necessary to construct, install, maintain, and all other cost required to install the 4” FL Plug Valves as described herein and within the contract documents, complete as shown on the Plans, specified, and directed by the Engineer. The UNIT PRICE BID AMOUNT shall be paid based on the number of units installed during the requested period as approved by the ENGINEER.
37. **Bid Item 43 – 4” 316 Stainless Steel FL 90-Degree LR Fitting:** The **UNIT PRICE BID AMOUNT** will be full compensation for all labor, materials, and equipment necessary to construct, install, maintain, and all other cost required to install the 4” 316 Stainless Steel FL 90-Degree LR Fittings as described herein and within the contract documents, complete as shown on the Plans, specified, and directed by the Engineer. The UNIT PRICE BID AMOUNT shall be paid based on the number of units installed during the requested period as approved by the ENGINEER.
38. **Bid Item 44 – 4” Stainless Steel FL 90-Degree Fitting:** The **UNIT PRICE BID AMOUNT** will be full compensation for all labor, materials, and equipment necessary to construct, install, maintain, and all other cost required to install the 4” Stainless Steel FL 90-Degree Fitting as described herein and within the contract documents, complete as shown on the Plans, specified, and directed by the Engineer. The UNIT PRICE BID AMOUNT shall be paid based on the number of units installed during the requested period as approved by the ENGINEER.

39. **Bid Item 45 – 4” Stainless Steel FL Tee Fitting:** The UNIT PRICE BID AMOUNT will be full compensation for all labor, materials, and equipment necessary to construct, install, maintain, and all other cost required to install the 4” Stainless Steel FL Tee Fittings as described herein and within the contract documents, complete as shown on the Plans, specified, and directed by the Engineer. The UNIT PRICE BID AMOUNT shall be paid based on the number of units installed during the requested period as approved by the ENGINEER.
40. **Bid Item 46 – 4” DIP MJ 90-Degree Fitting:** The UNIT PRICE BID AMOUNT will be full compensation for all labor, materials, and equipment necessary to construct, install, maintain, and all other cost required to install the 4” DIP MJ 90-Degree Fittings as described herein and within the contract documents, complete as shown on the Plans, specified, and directed by the Engineer. The UNIT PRICE BID AMOUNT shall be paid based on the number of units installed during the requested period as approved by the ENGINEER.
41. **Bid Item 47 – 4” DIP MJ 45-Degree Fitting:** The UNIT PRICE BID AMOUNT will be full compensation for all labor, materials, and equipment necessary to construct, install, maintain, and all other cost required to install the 4” DIP MJ 45-Degree Fittings as described herein and within the contract documents, complete as shown on the Plans, specified, and directed by the Engineer. The UNIT PRICE BID AMOUNT shall be paid based on the number of units installed during the requested period as approved by the ENGINEER.

S. Berthe Avenue Lift Station – 4” FM Connection To Existing Sewer System

42. **Item 48 – 4” Tapping Sleeve & Valve w/ Valve Box:** The UNIT PRICE BID AMOUNT will be full compensation for all labor, materials, and equipment necessary to construct, install, maintain, and all other cost required to install a 4” Tapping Sleeve & Valve w/ Valve Box as described herein and within the contract documents, complete as shown on the plans, specified, and directed by the Engineer. The UNIT PRICE BID AMOUNT shall be paid based on the number of units installed during the requested period as approved by the ENGINEER.

S. Berthe Avenue Lift Station – Water Service

43. **Bid Item 49 – 2” HDPE Tubing Service Line:** The UNIT PRICE BID AMOUNT will be full compensation for all labor, materials, and equipment necessary to construct, install, maintain, 90 degree fittings, if required, and all other cost required to install the 2” HDPE Tubing as described herein and within the contract documents, complete as shown on the Plans, specified, and directed by the Engineer. The tubing quantities to be paid for under this section shall be based on the diameter and the horizontal/vertical distance in linear feet of pipe measured along the top centerline of the pipe in place complete and acceptable to the Engineer with deduction for the laid length of valves and fittings. The UNIT PRICE BID AMOUNT shall be paid based on the measured length of tubing installed during the requested period as approved by the ENGINEER.
44. **Bid Item 50 – 6” x 2” Service Saddle:** The UNIT PRICE BID AMOUNT will be full compensation for all labor, materials, and equipment necessary to construct, install, maintain, and all other cost required to install the 6” x 2” Service Saddle as described herein and within the contract documents, complete as shown on the Plans, specified, and directed by the Engineer. The UNIT PRICE BID AMOUNT shall be paid based on the number of units installed during the requested period as approved by the ENGINEER.

45. **Bid Item 51 – 2” Ball Valve w/ Box:** The UNIT PRICE BID AMOUNT will be full compensation for all labor, materials, and equipment necessary to construct, install, maintain, and all other cost required to install the 2” Ball Valve w/ Box as described herein and within the contract documents, complete as shown on the Plans, specified, and directed by the Engineer. The UNIT PRICE BID AMOUNT shall be paid based on the number of units installed during the requested period as approved by the ENGINEER.
46. **Bid Item 52 – 4” SCH 40 PVC Service Line Casing:** The UNIT PRICE BID AMOUNT will be full compensation for all labor, materials, and equipment necessary to construct, test, maintain, cement, and all other cost required to install the 4” SCH 40 PVC Service Line Casing as described herein and within the contract documents, complete as shown on the Plans, specified, and directed by the Engineer. The service line casing quantities to be paid for under this section shall be based on the diameter and the horizontal/vertical distance in linear feet of pipe measured along the top centerline of the casing in place complete and acceptable to the Engineer with deduction for the laid length of valves and fittings. The UNIT PRICE BID AMOUNT shall be paid based on the measured length of pipe installed during the requested period as approved by the ENGINEER.
47. **Bid Item 53 – 2” Corporation Stop:** The UNIT PRICE BID AMOUNT will be full compensation for all labor, materials, and equipment necessary to construct, install, maintain, and all other cost required to install the 2” Corporation Stop as described herein and within the contract documents, complete as shown on the Plans, specified, and directed by the Engineer. The UNIT PRICE BID AMOUNT shall be paid based on the number of units installed during the requested period as approved by the ENGINEER.
48. **Bid Item 54 – 2” Curb Stop w/ Lock Wing:** The UNIT PRICE BID AMOUNT will be full compensation for all labor, materials, and equipment necessary to construct, install, maintain, and all other cost required to install the 2” Curb Stop w/ Lock Wing as described herein and within the contract documents, complete as shown on the Plans, specified, and directed by the Engineer. The UNIT PRICE BID AMOUNT shall be paid based on the number of units installed during the requested period as approved by the ENGINEER.
49. **Bid Item 55 – Turbine Water Meter w/ Meter Box:** The UNIT PRICE BID AMOUNT will be full compensation for all labor, materials, and equipment necessary to construct, install, maintain, and all other cost required to install the Turbine Water Meter w/ Meter Box as described herein and within the contract documents, complete as shown on the Plans, specified, and directed by the Engineer. The UNIT PRICE BID AMOUNT shall be paid based on the number of units installed during the requested period as approved by the ENGINEER.

S. Berthe Avenue Lift Station – Appurtenances

50. **Bid Item 57 – ARV:** The UNIT PRICE BID AMOUNT will be full compensation for all labor, materials, and equipment necessary to construct, install, maintain, and all other cost required to install the ARV's as described herein and within the contract documents, complete as shown on the Plans, specified, and directed by the Engineer. The UNIT PRICE BID AMOUNT shall be paid based on the number of units installed during the requested period as approved by the ENGINEER.
51. **Bid Item 58 – 2” SCH 80 CPVC Ball Valve:** The UNIT PRICE BID AMOUNT will be full compensation for all labor, materials, and equipment necessary to construct, install, maintain, and all other cost required to install the 2” SCH 80 CPVC Ball Valves as described herein and within the contract documents, complete as shown on the Plans, specified, and directed by the Engineer.

The UNIT PRICE BID AMOUNT shall be paid based on the number of units installed during the requested period as approved by the ENGINEER.

52. **Bid Item 60 – 2” Stainless Steel Ball Valve:** The UNIT PRICE BID AMOUNT will be full compensation for all labor, materials, and equipment necessary to construct, install, maintain, and all other cost required to install the 2” Stainless Steel Ball Valves as described herein and within the contract documents, complete as shown on the Plans, specified, and directed by the Engineer. The UNIT PRICE BID AMOUNT shall be paid based on the number of units installed during the requested period as approved by the ENGINEER.
53. **Bid Item 61 – Diaphragm Pressure Gauges:** The UNIT PRICE BID AMOUNT will be full compensation for all labor, materials, and equipment necessary to construct, install, maintain, and all other cost required to install the Diaphragm Pressure Gauges as described herein and within the contract documents, complete as shown on the Plans, specified, and directed by the Engineer. The UNIT PRICE BID AMOUNT shall be paid based on the number of units installed during the requested period as approved by the ENGINEER.
54. **Bid Item 62 – 316 Stainless Steel Pipe Stands:** The UNIT PRICE BID AMOUNT will be full compensation for all labor, materials, and equipment necessary to construct, install, maintain, and all other cost required to install the 316 Stainless Steel Pipe Stands as described herein and within the contract documents, complete as shown on the Plans, specified, and directed by the Engineer. The UNIT PRICE BID AMOUNT shall be paid based on the number of units installed during the requested period as approved by the ENGINEER.

S. Berthe Avenue Lift Station – Electrical

55. **Bid Item 64 – Gulf Power - Pole Mounted Transformer:** The UNIT PRICE BID AMOUNT will be full compensation for all labor, materials, and equipment necessary to construct, install, maintain, and all other cost required to install the Gulf Power - Pole Mounted Transformer as described herein and within the contract documents, complete as shown on the Plans, specified, and directed by the Engineer. The UNIT PRICE BID AMOUNT shall be paid based on the number of units installed during the requested period as approved by the ENGINEER.

ADDITIVE ALTERNATE 1 - 4” Force Main Connection to Existing Sewer System

56. **Item 67 – 4” Line Stop:** The UNIT PRICE BID AMOUNT will be full compensation for all labor, materials, and equipment necessary to construct, install, maintain, and all other cost required to install a 4” Line Stop as described herein and within the contract documents, complete as shown on the plans, specified, and directed by the Engineer. The UNIT PRICE BID AMOUNT shall be paid based on the number of units installed during the requested period as approved by the ENGINEER.
57. **Bid Item 69 – Connect to Existing Collection System FM via Open Cut:** The UNIT PRICE BID AMOUNT will be compensation for all labor, equipment, and materials including, but not limited to, piping, fittings, valves, and all other items and incidentals required to construct, install, and operate the entirety of the connection to the existing collection system FM via open cut as shown and described in the contract documents. The UNIT PRICE BID AMOUNT shall be paid based on the percentages of work completed as approved by the ENGINEER.

58. **Item 71 – 4” MJ Plug** The UNIT PRICE BID AMOUNT will be full compensation for all labor, materials, and equipment necessary to construct, install, maintain, and all other cost required to install a 4” MJ Plug as described herein and within the contract documents, complete as shown on the plans, specified, and directed by the Engineer. The UNIT PRICE BID AMOUNT shall be paid based on the number of units installed during the requested period as approved by the ENGINEER.

ADDITIVE ALTERNATE 2 – S. Berthe Avenue Lift Station – 4” FM Connection to Existing Sewer System

59. **Bid Item 72 – 4” DIP MJ Wye Fitting:** The UNIT PRICE BID AMOUNT will be full compensation for all labor, materials, and equipment necessary to construct, install, maintain, and all other cost required to install the 4” DIP MJ Wye Fitting as described herein and within the contract documents, complete as shown on the Plans, specified, and directed by the Engineer. The UNIT PRICE BID AMOUNT shall be paid based on the number of units installed during the requested period as approved by the ENGINEER.
60. **Bid Item 73 – 4” Plug Valve w/ Box:** The UNIT PRICE BID AMOUNT will be full compensation for all labor, materials, and equipment necessary to construct, install, maintain, and all other cost required to install the 4” Plug Valve w/ Box as described herein and within the contract documents, complete as shown on the Plans, specified, and directed by the Engineer. The UNIT PRICE BID AMOUNT shall be paid based on the number of units installed during the requested period as approved by the ENGINEER.
61. **Bid Item 74 – Connect to Existing Collection System FM via Open Cut:** The UNIT PRICE BID AMOUNT will be compensation for all labor, equipment, and materials including, but not limited to, piping, fittings, valves, and all other items and incidentals required to construct, install, and operate the entirety of the connection to the existing collection system FM via open cut as shown and described in the contract documents. The UNIT PRICE BID AMOUNT shall be paid based on the percentages of work completed as approved by the ENGINEER.

ITEM	DESCRIPTION	QTY	UNIT	UNIT PRICE	AMOUNT
General					
1	General Conditions (Refer to Basis of Bid Description)	1	LS		
2	Lift Station Shoring & Fiberglass Wet Well Installation	1	LS		
3	Dewatering	1	LS		
Site Work & Erosion Control					
4	Site Clearing & Grubbing	0.14	AC		
5	Grading/Fill	300	CY		
6	Silt Fence (Includes Removal)	175	LF		
7	Sidewalk Repair (Includes all Saw-Cutting, Excavation, Approved Backfill, & Compaction)	8	SY		
8	Asphalt Roadway Repair (Includes all Saw-Cutting, Excavation, Approved Backfill, & Compaction)	26	SY		
9	Temporary Access Road (6" Type A Compacted Base & Approved Backfill)	40	SY		
10	Sod (Bahia)	500	SY		
11	Geotextile Fabric	200	SF		
12	6" Granite #57 Stone	4	CY		
13	6' Tall White Vinyl Privacy Fence	120	LF		
14	12' White Vinyl Rolling Access Gate	1	LS		
15	Concrete Access Drive & Generator Pad	38	SY		
16	Concrete Lift Station Pad	20	SY		
Storm Sewer Improvements					
17	Temporary 36" RCP	40	LF		
8" Sanitary Sewer Improvements					
18	8" DIP	65	LF		
19	Sewer Manhole (Doghouse)	1	EA		
20	8" Permanent Plug	2	EA		
21	8" FRP Sleeve	1	EA		
4" Force Main Improvements					
22	4" HDPE DR11 via Directional Drill	370	LF		
23	4" PVC - DR25	140	LF		
24	4" DIP MJ Tee	1	EA		
25	4" x 2" MJ Plug Valve	1	EA		
26	4" DIP MJ 90° Fitting	3	EA		
27	4" DIP MJ 45° Fitting	1	EA		
28	PVC to HDPE Transition Fitting	2	EA		
29	ARV Manhole	1	EA		
30	ARV	1	EA		
31	ARV Appurtenances (2" Piping, 2" Fittings, & 2" Valves)	1	LS		

32	ARV Enclosure	1	EA		
33	Bollards	4	EA		
34	Piping/Fittings for Existing Utility Conflict	2	EA		
4" Force Main Connection to Existing Sewer System					
35	4" Tapping Sleeve & Valve w/ Valve Box	2	EA		
36	4" Line Stop	2	EA		
37	4" MJ Plug	2	EA		
38	Cut/Cap 4" FM & Pump-Out Remaining Sewage in 4" FM	1	LS		
S. Berthe Avenue Lift Station - Piping, Valves, & Fittings					
39	4" 316 Stainless Steel Piping	3	LF		
40	4" PVC - DR25	50	LF		
41	4" FL Check Valve	2	EA		
42	4" FL Plug Valve	3	EA		
43	4" 316 Stainless Steel FL 90° LR Fitting	3	EA		
44	4" Stainless Steel FL 90° Fitting	1	EA		
45	4" Stainless Steel FL Tee Fitting	2	EA		
46	4" DIP MJ 90° Fitting	2	EA		
47	4" DIP MJ 45° Fitting	1	EA		
S. Berthe Avenue Lift Station - 4" FM Connection To Existing Sewer System					
48	4" Tapping Sleeve & Valve	1	EA		
S. Berthe Avenue Lift Station - Water Service					
49	2" HDPE Tubing	70	LF		
50	6" x 2" Service Saddle	1	EA		
51	2" Ball Valve w/ Box	1	EA		
52	4" SCH 40 PVC Service Line Casing	25	LF		
53	2" Corporation Stop	1	EA		
54	2" Curb Stop w/ Lock Wing	1	EA		
55	Turbine Water Meter w/ Meter Box	1	EA		
56	Wash Down Station (Includes all Items & Material in Detail A1)	1	LS		
S. Berthe Avenue Lift Station - Appurtenances					
57	ARV	2	EA		
58	2" SCH 80 CPVC Ball Valve	3	EA		
59	2" SCH 80 CPVC Piping and Fittings	1	LS		
60	2" Stainless Steel Ball Valve	4	EA		
61	Diaphragm Pressure Gauges	2	EA		
62	316 Stainless Steel Pipe Stands	6	EA		
63	Lift Station Buoyancy Collar	1	LS		
S. Berthe Avenue Lift Station - Electrical					
64	Gulf Power - Pole Mounted Transformer	1	EA		
65	Utility Power Pole & Overhead Service Drop	1	LS		
66	Electrical Conduit & Fittings	1	LS		
TOTAL BASE BID COST \$ _____					

ADDITIVE ALTERNATE 1 - 4" Force Main Connection to Existing Sewer System					
67	4" Line Stop	1	EA		
68	Cut/Tap 4" FM & Pump-Out Remaining Sewage in 4" FM	1	LS		
69	Connect to Existing Collection System FM via Open Cut	2	EA		
70	Bypass Pumping Required for 4" FM Connection	1	LS		
71	4" MJ Plug	2	EA		
TOTAL ADDITIVE ALTERNATE 1 BID COST \$ _____					

ADDITIVE ALTERNATE 2 - S. Berthe Avenue Lift Station - 4" FM Connection to Existing Sewer System					
72	4" DIP MJ Wye Fitting	1	EA		
73	4" MJ Plug Valve w/ Box	1	EA		
74	Connect to Existing Sanitary Sewer System via Cut	1	EA		
75	Cut/Tap 4" FM & Pump-Out Remaining Sewage in 4" FM	1	LS		
76	Bypass Pumping Required for Fiberglass LS 4" FM Connection	1	LS		
TOTAL ADDITIVE ALTERNATE 2 BID COST \$ _____					

7. BIDDER HEREBY ACKNOWLEDGES RECEIPT OF THE FOLLOWING ADDENDUMS: _____

Name of Bidder: _____

Business structure: () Corporation, () Partnership, () Individual, () Other: _____

If a Partnership: _____

Name(s) of Partner(s): _____

If a Corporation: _____

Incorporated in State of: _____ Date of Incorporation: _____

Business Address: _____

City: _____ State _____ Zip _____

Telephone Number: () _____ Fax () _____

E-mail Address: _____

Submitted By: _____
(Print)

Affix Corporate Seal
(If Corporation)

Title: _____

Signature: _____

ATTEST: _____

Secretary

By: _____
Print Name

State of Florida
County of _____

The foregoing instrument was acknowledged before
me by means of Physical Presence or
 Online Notarization

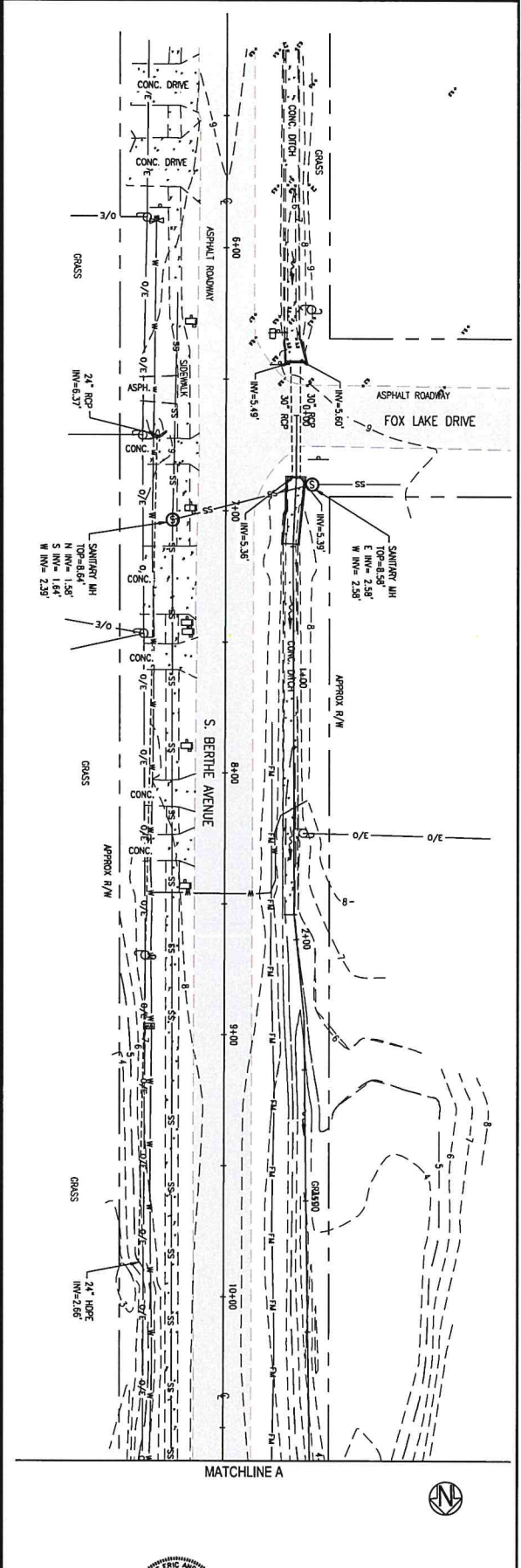
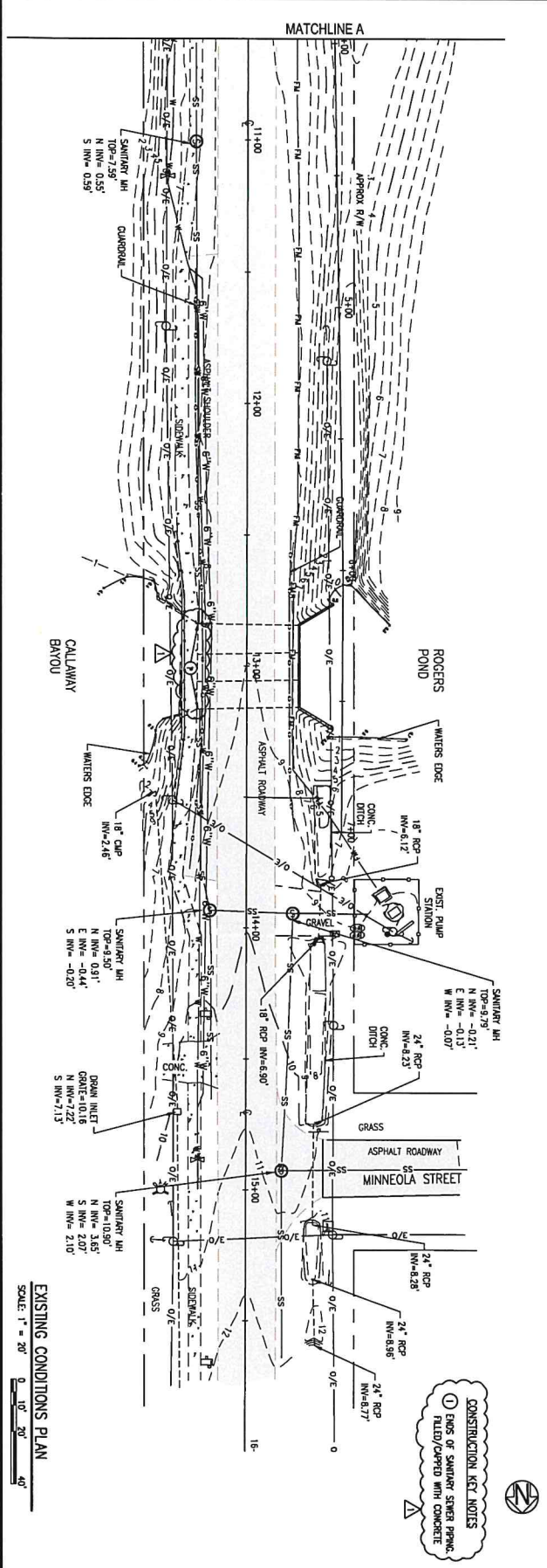
The foregoing instrument was acknowledged before me this ___ day of _____, 20 __, by _____,
who is personally known to me or who presented _____ as identification, and who (did) (did not) take
an oath.

[Signature of Notary Public]

[Printed, typed or stamped name of Notary Public]

NOTE: BIDS MAY BE REJECTED IF ALL DOCUMENTS ARE NOT COMPLETE AND EXECUTED, AND THE NUMBER OF COPIES SPECIFIED/REQUESTED OF EACH ARE NOT SUBMITTED WITH THE BID.

B-1-3



C-100	EXISTING CONDITIONS PLAN		PROJECT NO. 27656.01	NO. 1	DATE 01/2022	APPR. JEA	REVISION/ACTION TAKEN ADDENDUM 1
			DESIGNED BY: TFL				
			DRAWN BY: JEA				
			CHECKED BY: JEA				
			PROJECT MGR: JCP				
		DATE: SEPTEMBER 2021	NOT RELEASED FOR CONSTRUCTION BY		DATE		

S. BERTHE AVENUE LIFT STATION AND SEWER REHABILITATION

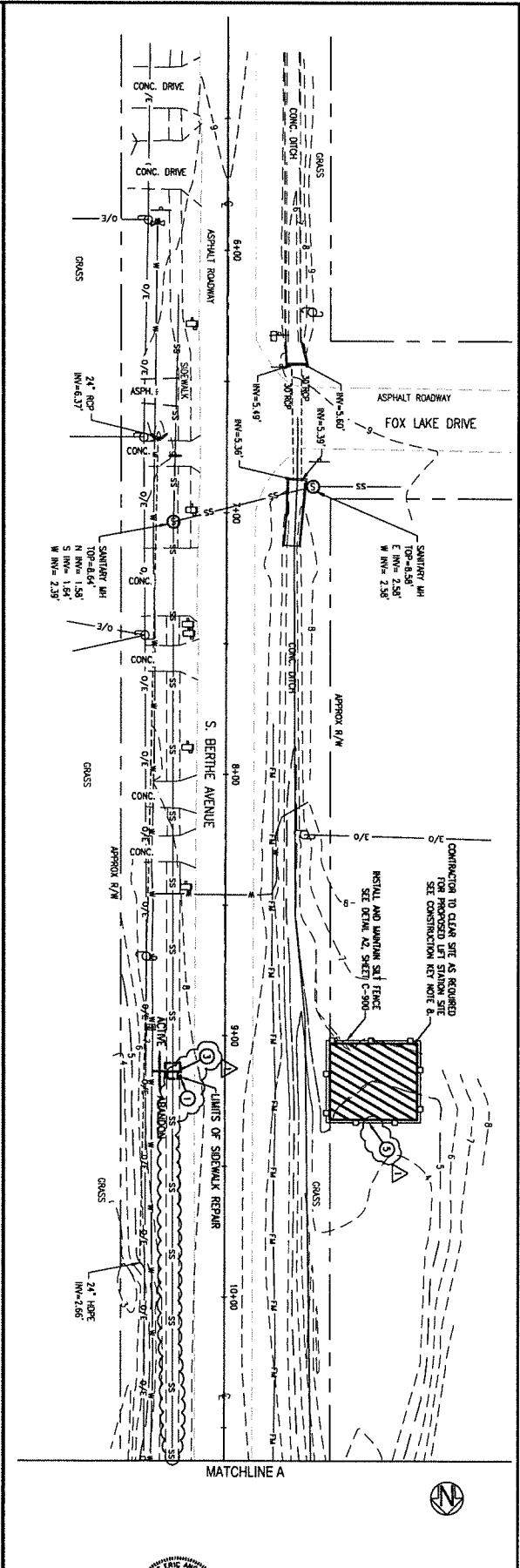
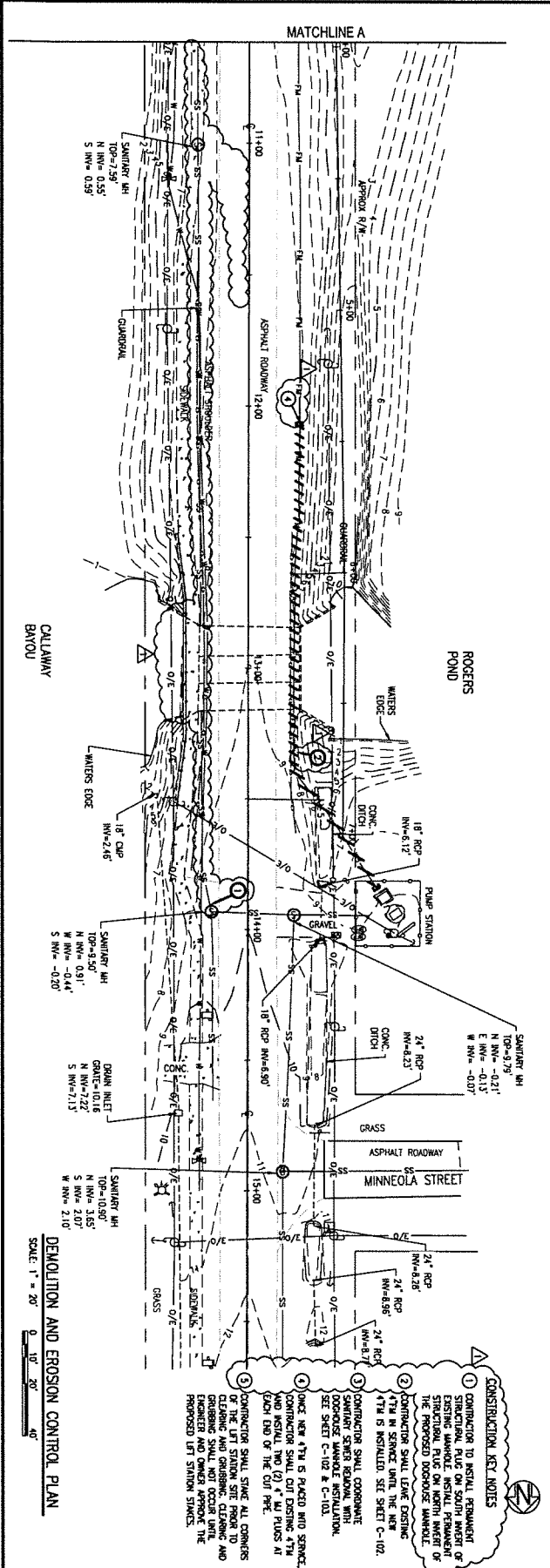
ERIC ANDERSON, P.E.
 P.L. Eng. Engineer 027494

BASKERVILLE-DONOVAN, INC.
 ENGINEERING THE SOUTH SINCE 1927

14101 PANAMA CITY BEACH PARKWAY, SUITE 110 PANAMA CITY BEACH, FL 32413 (850) 230-6150
 ENGINEERING BUSINESS: ES-0000000

Panama City Beach - Tallahassee - Mobile

This drawing is the property of BASKERVILLE-DONOVAN, INC. and is not to be reproduced in whole or in part. It is not to be used on any other project and is to be returned upon request.



DEMOLITION AND EROSION CONTROL PLAN

SCALE: 1" = 20'

CONSTRUCTION KEY NOTES

- CONTRACTOR TO REMOVE ALL CONCRETE, BRICK, BLOCK, AND OTHER MATERIALS FROM THE EXISTING STRUCTURE AND DEMOLITION SHALL BE ACCORDING TO THE PROPOSED LIFT STATION SIZES.
- CONTRACTOR SHALL REMOVE ALL CONCRETE, BRICK, BLOCK, AND OTHER MATERIALS FROM THE EXISTING STRUCTURE AND DEMOLITION SHALL BE ACCORDING TO THE PROPOSED LIFT STATION SIZES.
- CONTRACTOR SHALL REMOVE ALL CONCRETE, BRICK, BLOCK, AND OTHER MATERIALS FROM THE EXISTING STRUCTURE AND DEMOLITION SHALL BE ACCORDING TO THE PROPOSED LIFT STATION SIZES.
- CONTRACTOR SHALL REMOVE ALL CONCRETE, BRICK, BLOCK, AND OTHER MATERIALS FROM THE EXISTING STRUCTURE AND DEMOLITION SHALL BE ACCORDING TO THE PROPOSED LIFT STATION SIZES.

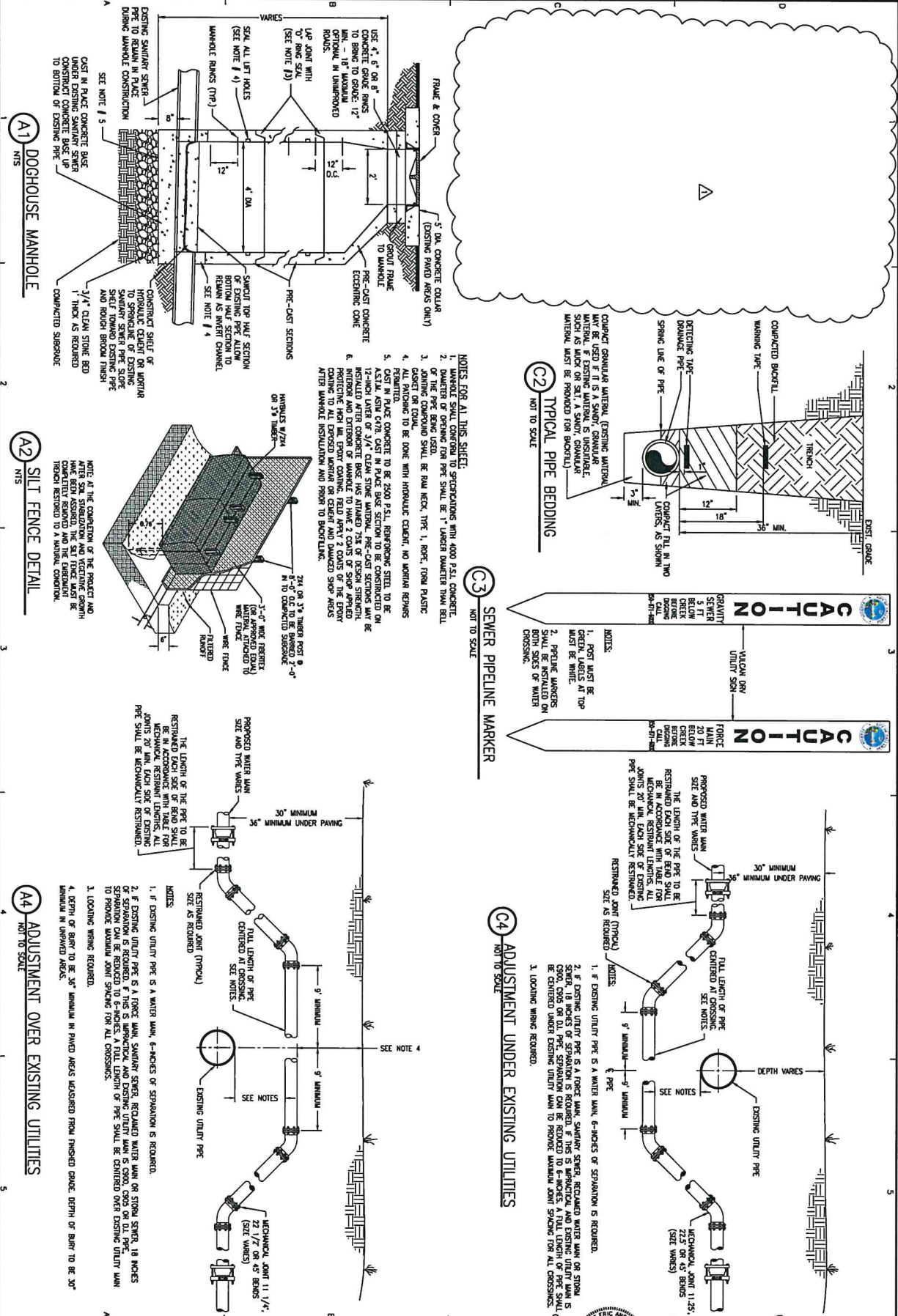
PROJECT NO.	NO.	DATE	APPR.	REVISION/ACTION TAKEN
27656.01	1	01/2022	JCA	ADDITION 1
DESIGNED BY: TIL				
DRAWN BY: TIL				
CHECKED BY: JCA				
PROJ. MGR: JCP				
DATE: SEPTEMBER 2021				NOT RELEASED FOR CONSTRUCTION BY DATE

**S. BERTHE AVENUE
LIFT STATION AND
SEWER REHABILITATION**

BASKERVILLE-DONOVAN, INC.
ENGINEERING THE SOUTH SINCE 1927
14101 PANAMA CITY BEACH PARKWAY, SUITE 110 PANAMA CITY BEACH, FL 32413 (904) 230-6150
ENGINEERING BUSINESS 18-00000-00
Panama City Beach - Tallahassee - State

This drawing is the property of BASKERVILLE-DONOVAN, INC. and it will be reproduced in whole or in part, it is not to be used on any other project, used to be the intended user required.

C-101



<p>C-900</p> <p>DETAILS</p>	PROJECT NO.	27656.01	NO.	1	DATE	01/2022	APPR.	JCA	REVISION/ACTION TAKEN	ADDITION 1
	DESIGNED BY	JCP								
	DRAWN BY	JCP								
	CHK'D BY	JCP								
	PRCL. MGR.	JCP								
DATE: SEPTEMBER 2021	NOT RELEASED FOR CONSTRUCTION BY _____ DATE _____									

**S. BERTHE AVENUE
LIFT STATION AND
SEWER REHABILITATION**



BASKERVILLE-DONOVAN, INC.
ENGINEERING THE SOUTH SINCE 1927

1101 PANAMA CITY BEACH PARKWAY, SUITE 110 PANAMA CITY BEACH, FL 32413 (850) 200-6150
ENGINEERING BUSINESS CH-000000-00

Panama City Beach, Tallahassee - Mobile

This drawing is the property of BASKERVILLE-DONOVAN, INC. and it and its contents shall not be reproduced in whole or in part, or it shall be used on any other project, without the written consent of the company.