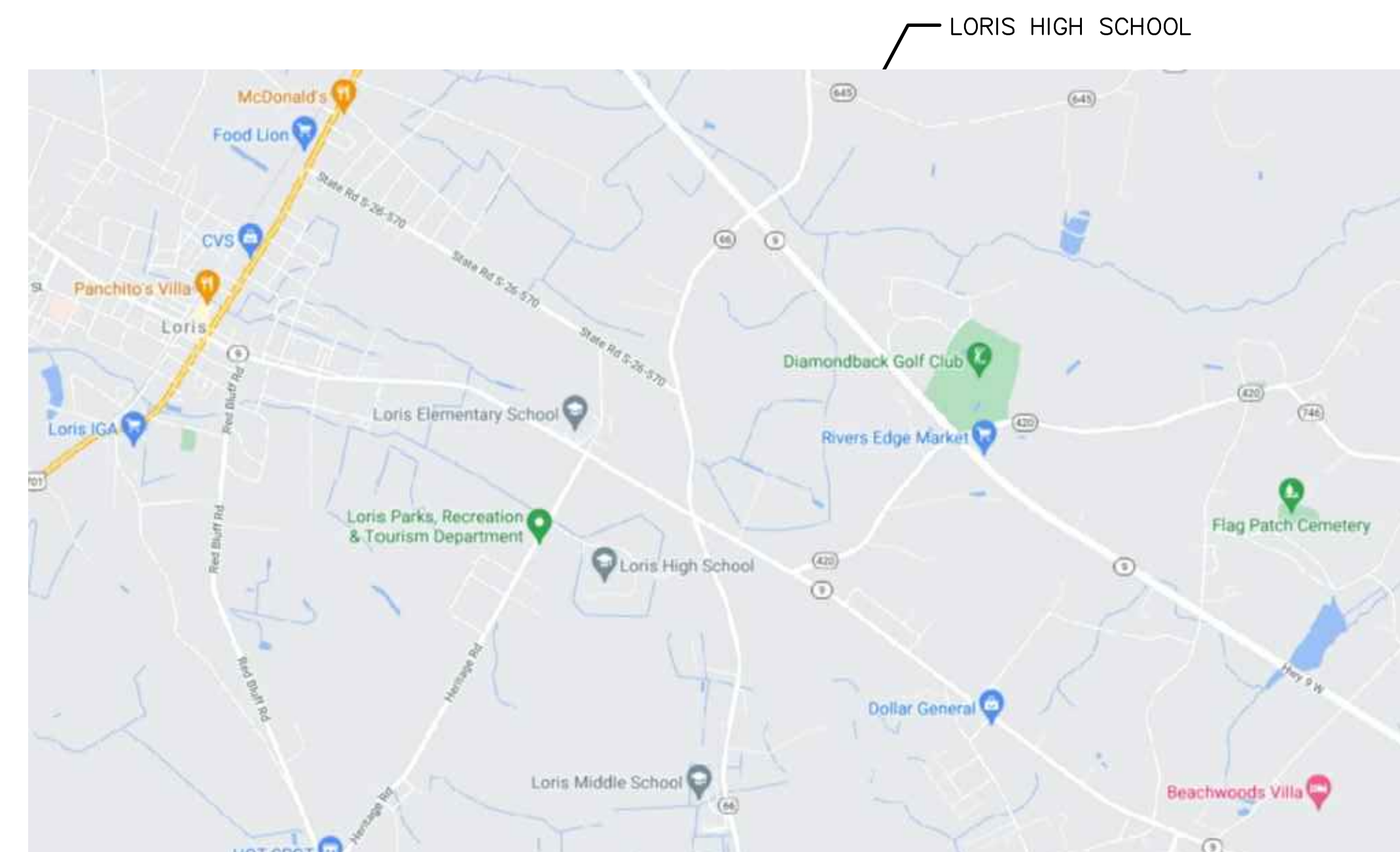


LORIS HIGH SCHOOL COOLING TOWER REPLACEMENT HORRY COUNTY SCHOOLS

LORIS SOUTH CAROLINA



SITE PLAN
N.T.S.



VICINITY MAP
N.T.S.

SHEET LIST

CS-1 COVER SHEET

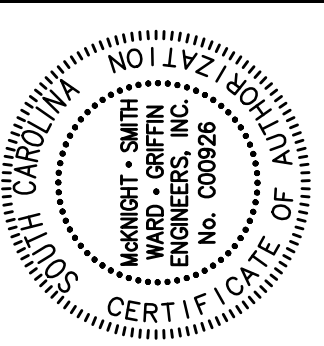
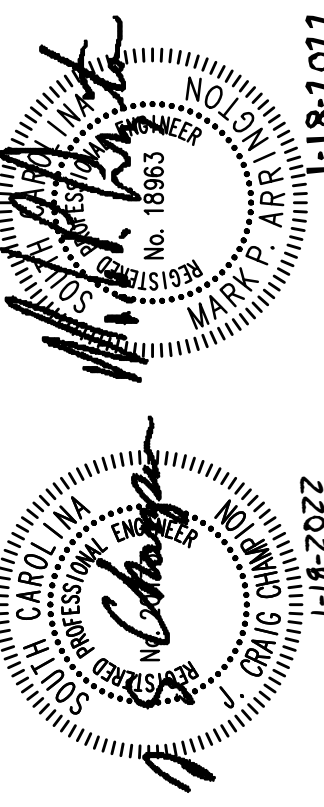
MECHANICAL/ELECTRICAL DEMOLITION

ME-D1 SECTION 'F' DEMOLITION PLAN
ME-D2 DEMOLITION PHOTOS

MECHANICAL/ELECTRICAL

ME-1 SECTION 'F' FLOOR PLAN
ME-2 SCHEDULES & DETAILS
ME-3 SCHEDULES & DETAILS

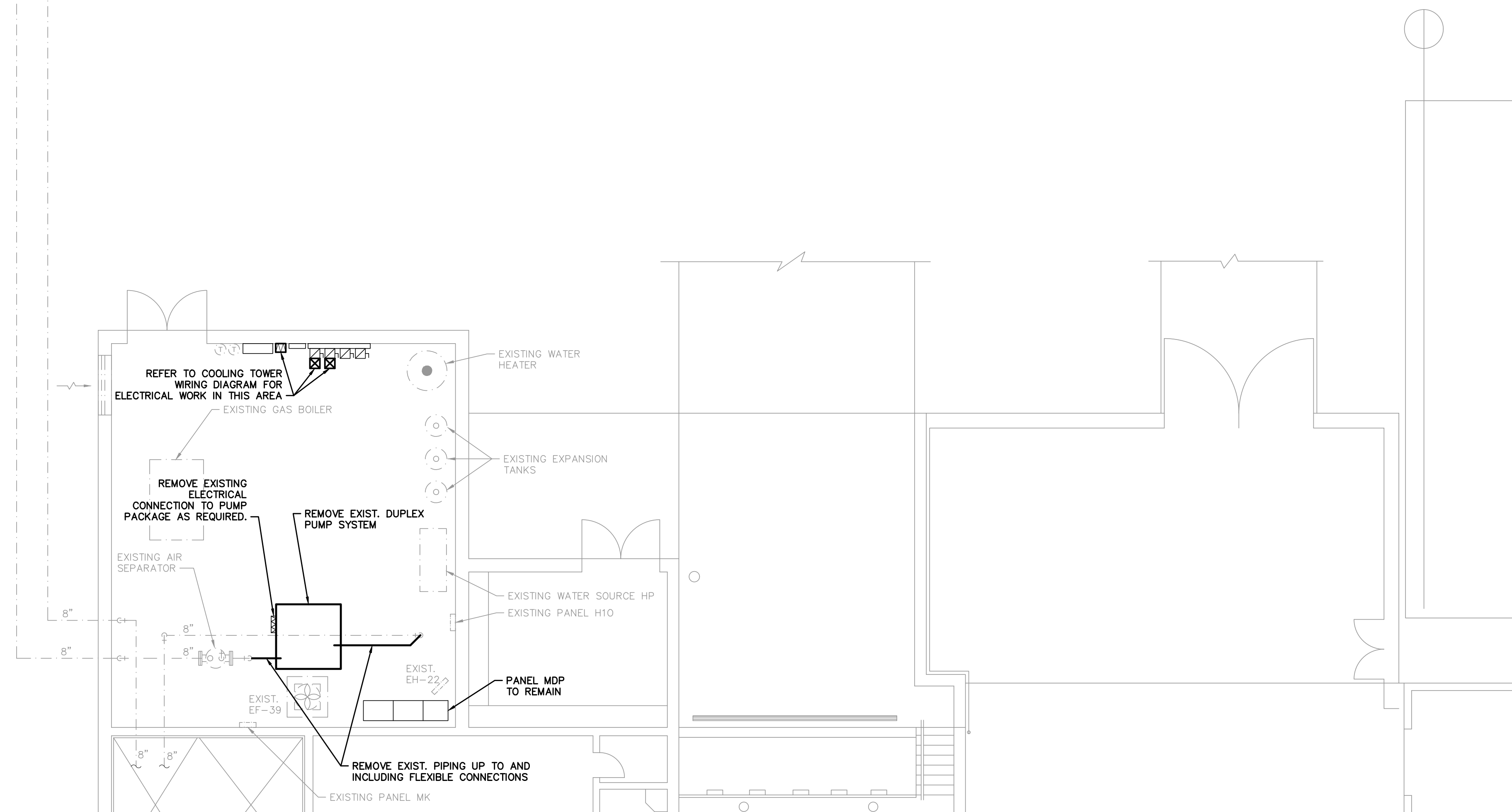
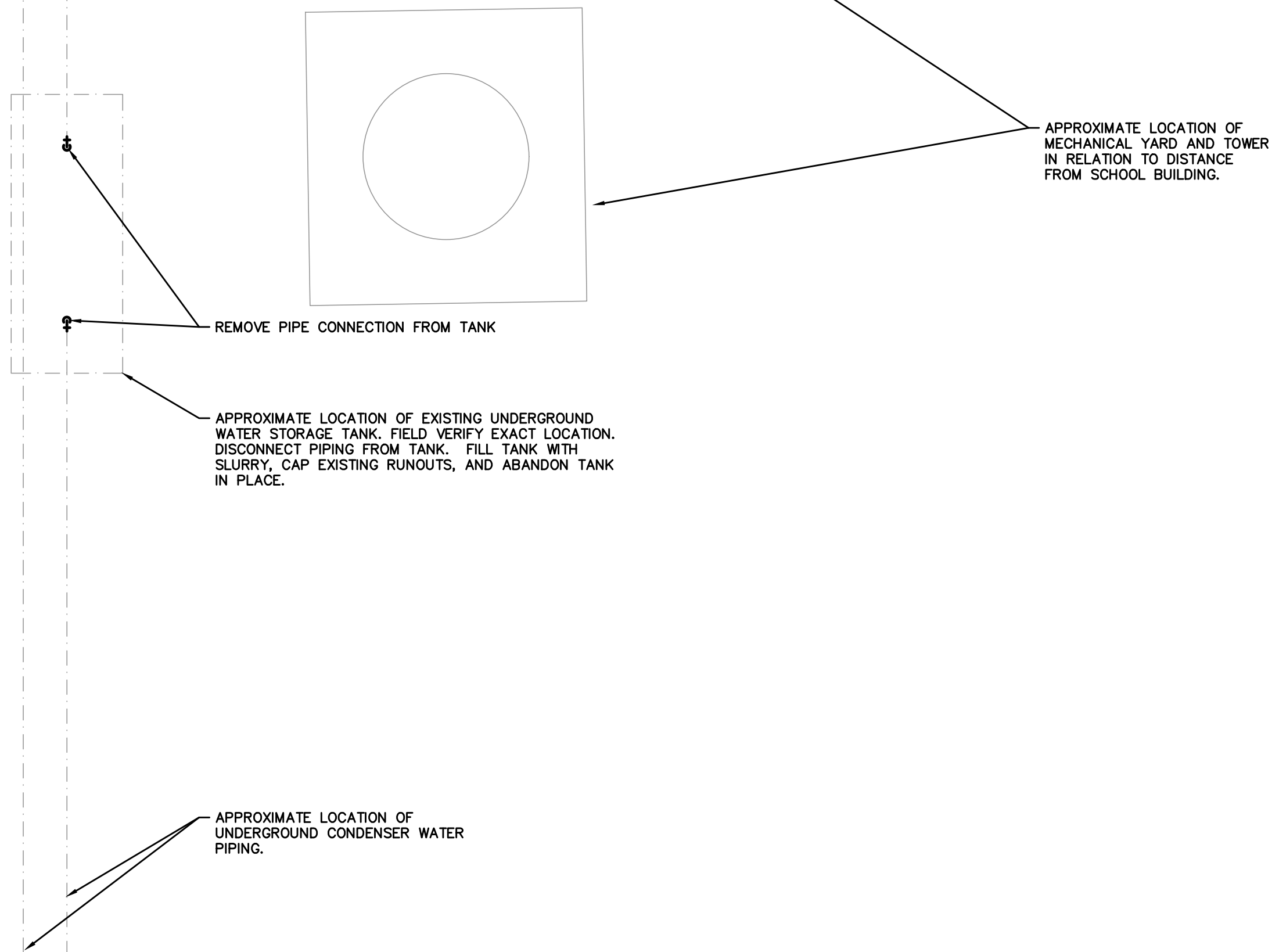
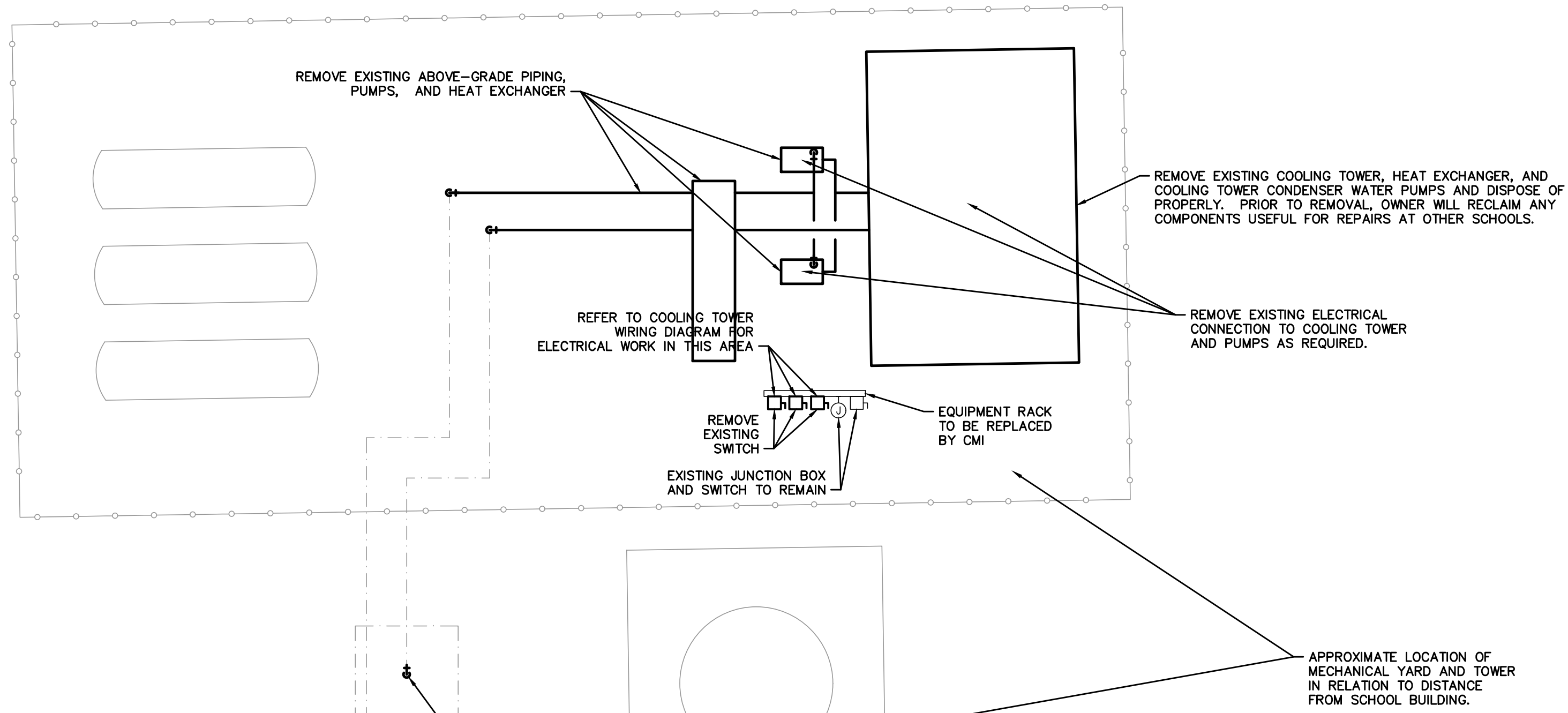
McKNIGHT · SMITH
WARD · GRIFFIN
ENGINEERS, INCORPORATED
4223 South Boulevard
Loris, SC 29509
704/527-2112



JOB NUMBER	21-161	REVISION DATES
DESIGNED BY	MSB/ACK	
CHECKED BY	JCM/WFA	
DATE	1-18-2022	

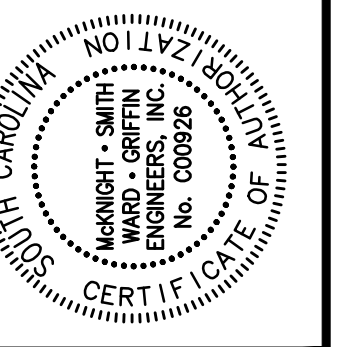
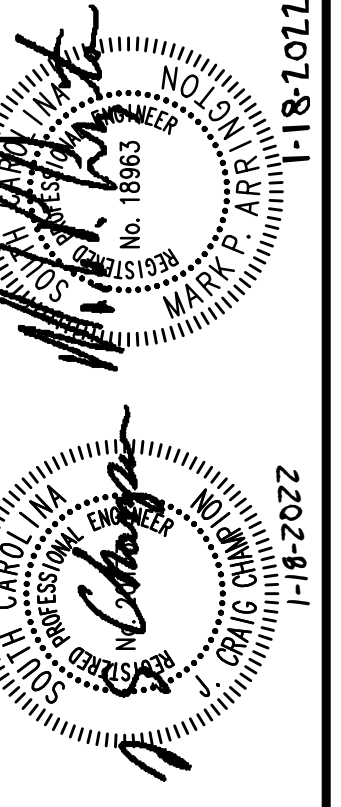
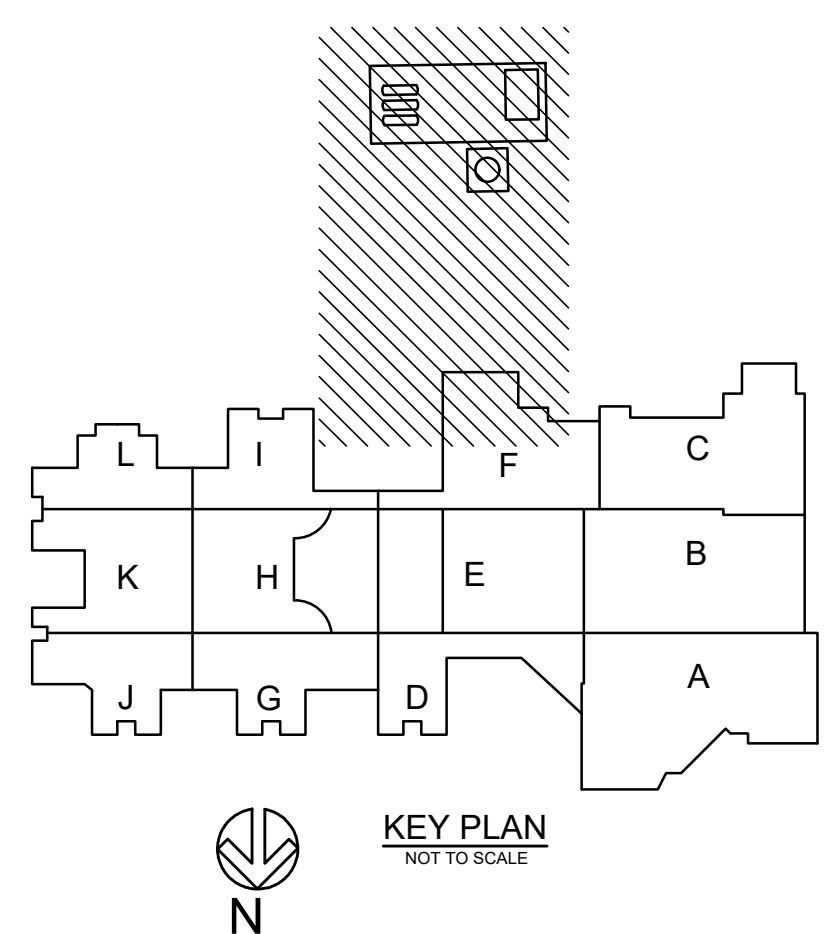
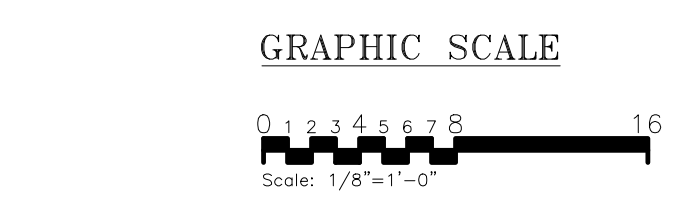
JOB TITLE
**LORIS HIGH SCHOOL
COOLING TOWER REPLACEMENT
HORRY COUNTY SCHOOL DISTRICT**
LORIS SOUTH CAROLINA

SHEET TITLE
COVER SHEET



1 PARTIAL FLOOR PLAN - AREA F - DEMOLITION
SCALE: 1/8" = 1'-0"

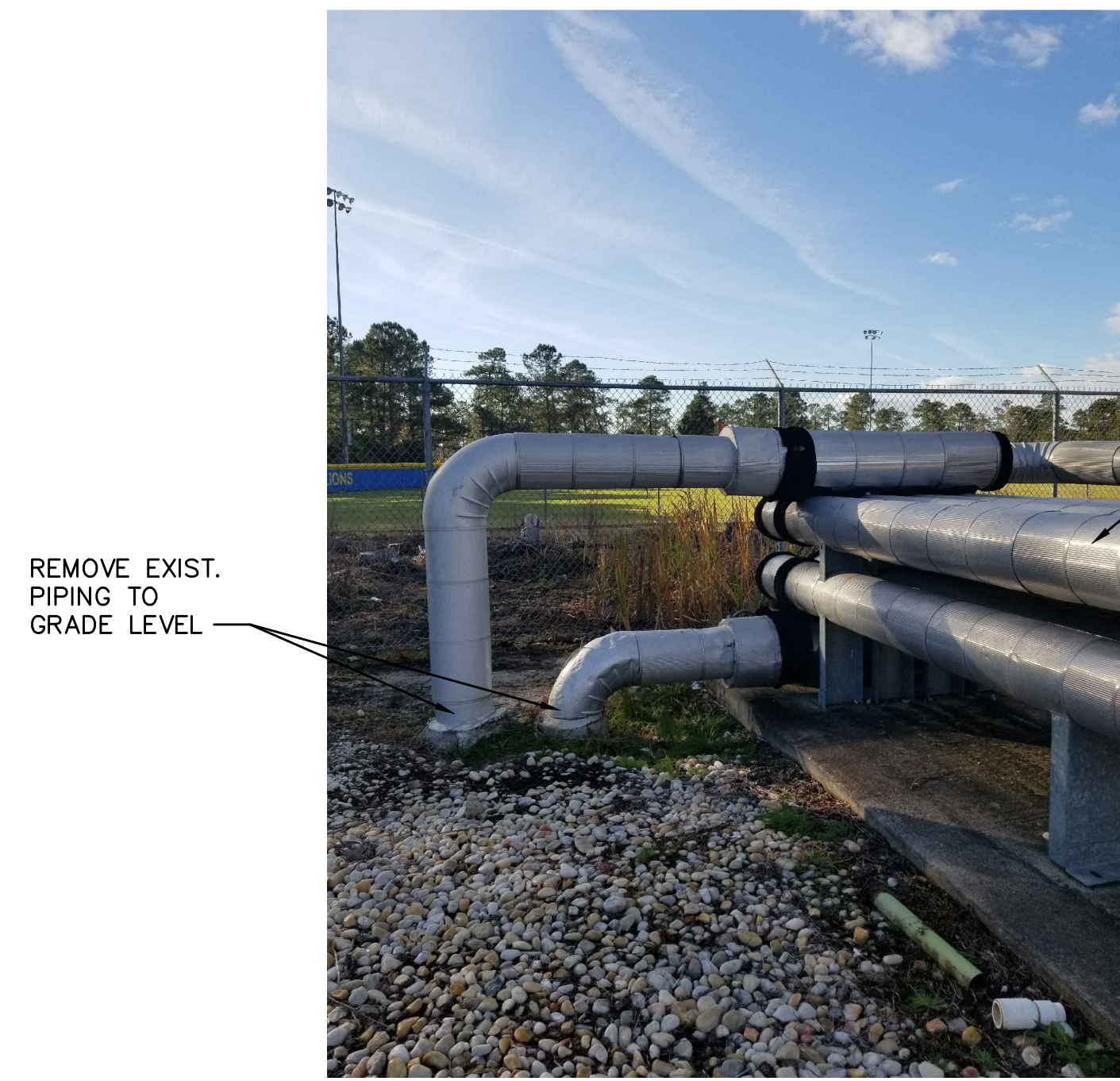
DEMOLITION LEGEND	
	EXISTING TO REMAIN IN USE OR BE ABANDONED
	EXISTING TO BE REMOVED
	EXISTING TO BE RELOCATED
	CAP DUCT



JOB NUMBER	21-161	REVISION DATES
DESIGNED BY <td>MSB/JCK <td></td> </td>	MSB/JCK <td></td>	
CHECKED BY <td>JCM/MPA <td></td> </td>	JCM/MPA <td></td>	
DATE <td>1-18-2022</td> <td></td>	1-18-2022	

JOB TITLE
**LORIS HIGH SCHOOL
COOLING TOWER REPLACEMENT
HORRY COUNTY SCHOOL DISTRICT**
LORIS SOUTH CAROLINA

SHEET TITLE
**PARTIAL FLOOR PLAN
AREA "F" - DEMOLITION**



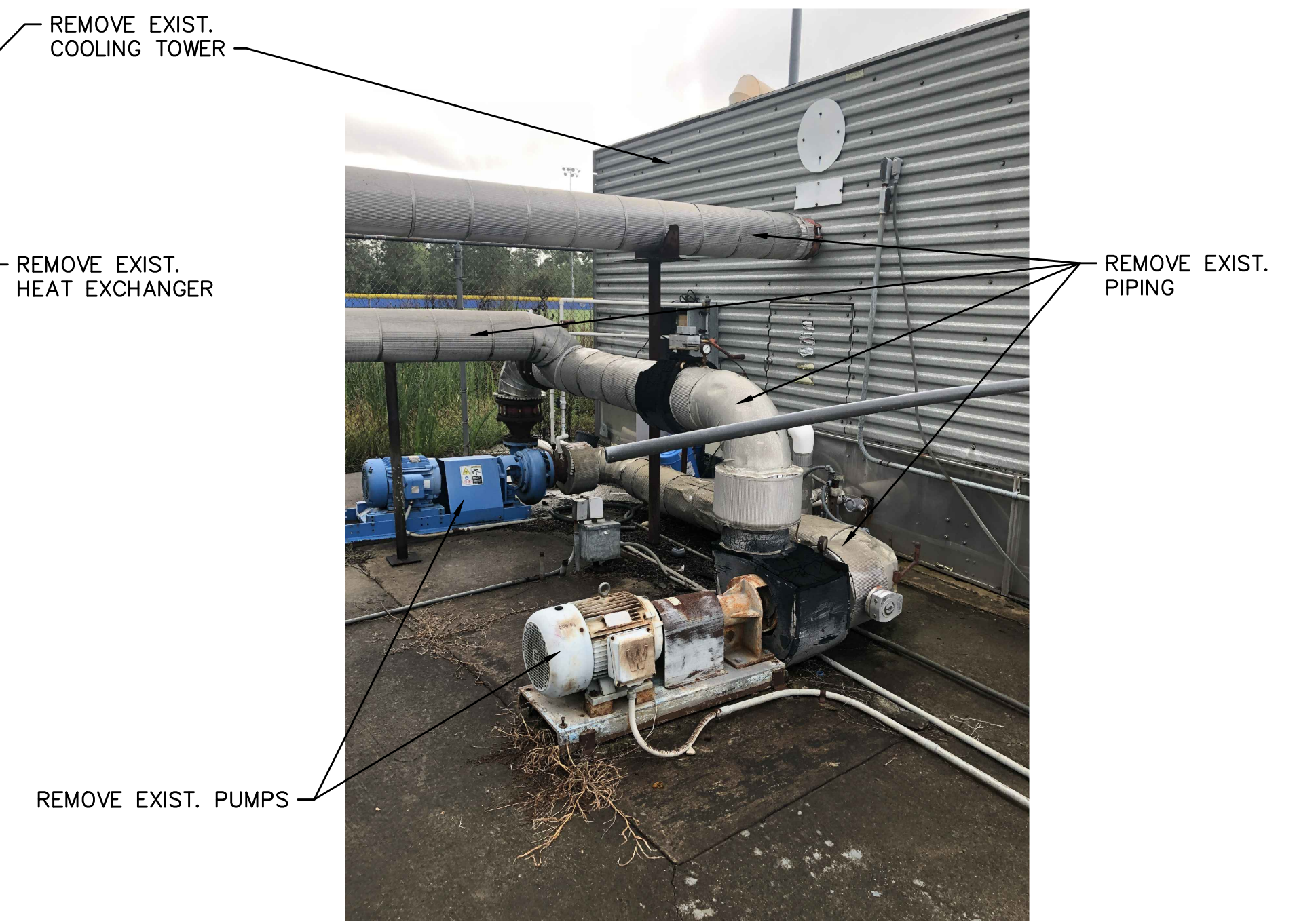
5 DEMOLITION PHOTO 5
SCALE: NTS



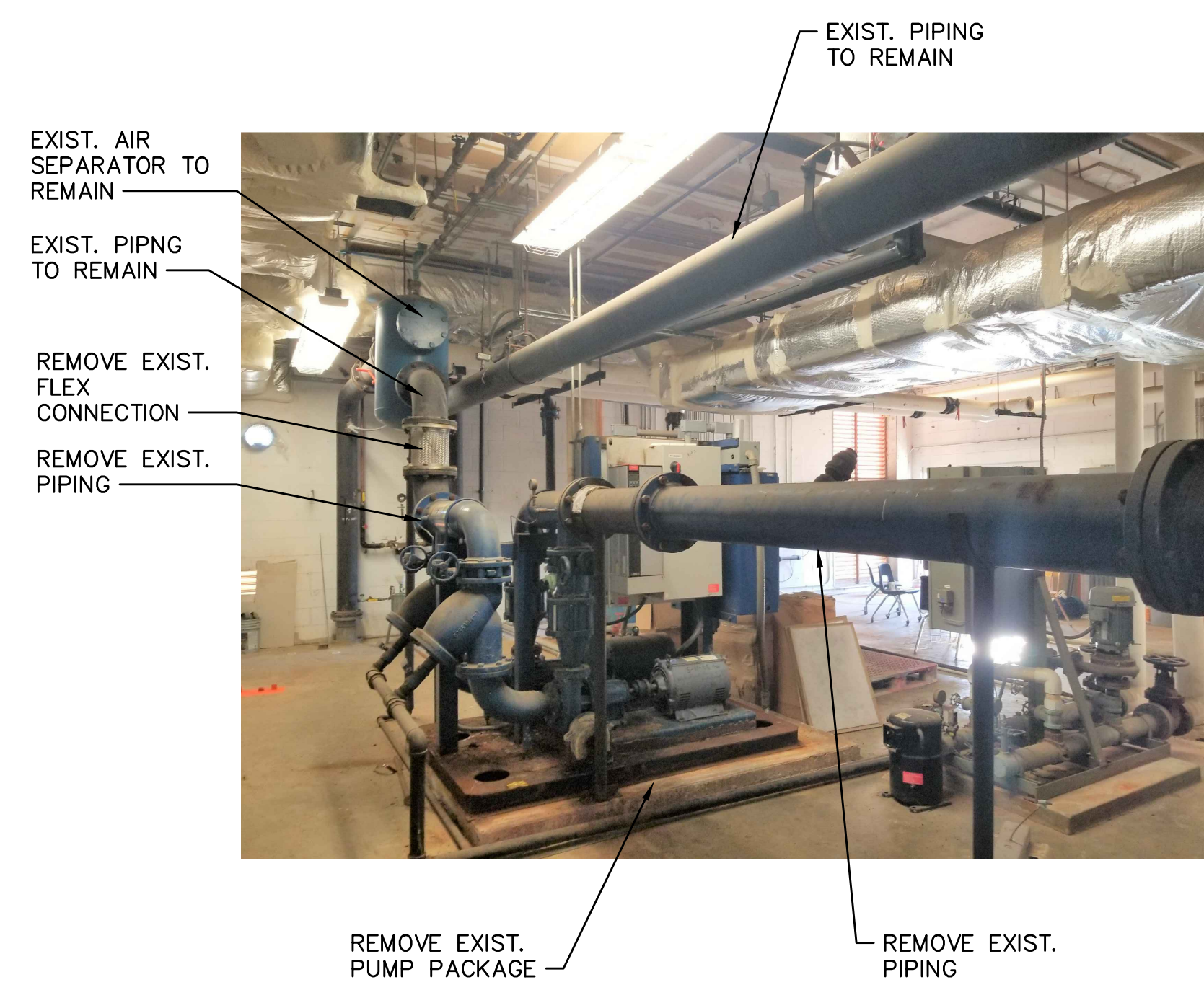
6 DEMOLITION PHOTO 6
SCALE: NTS



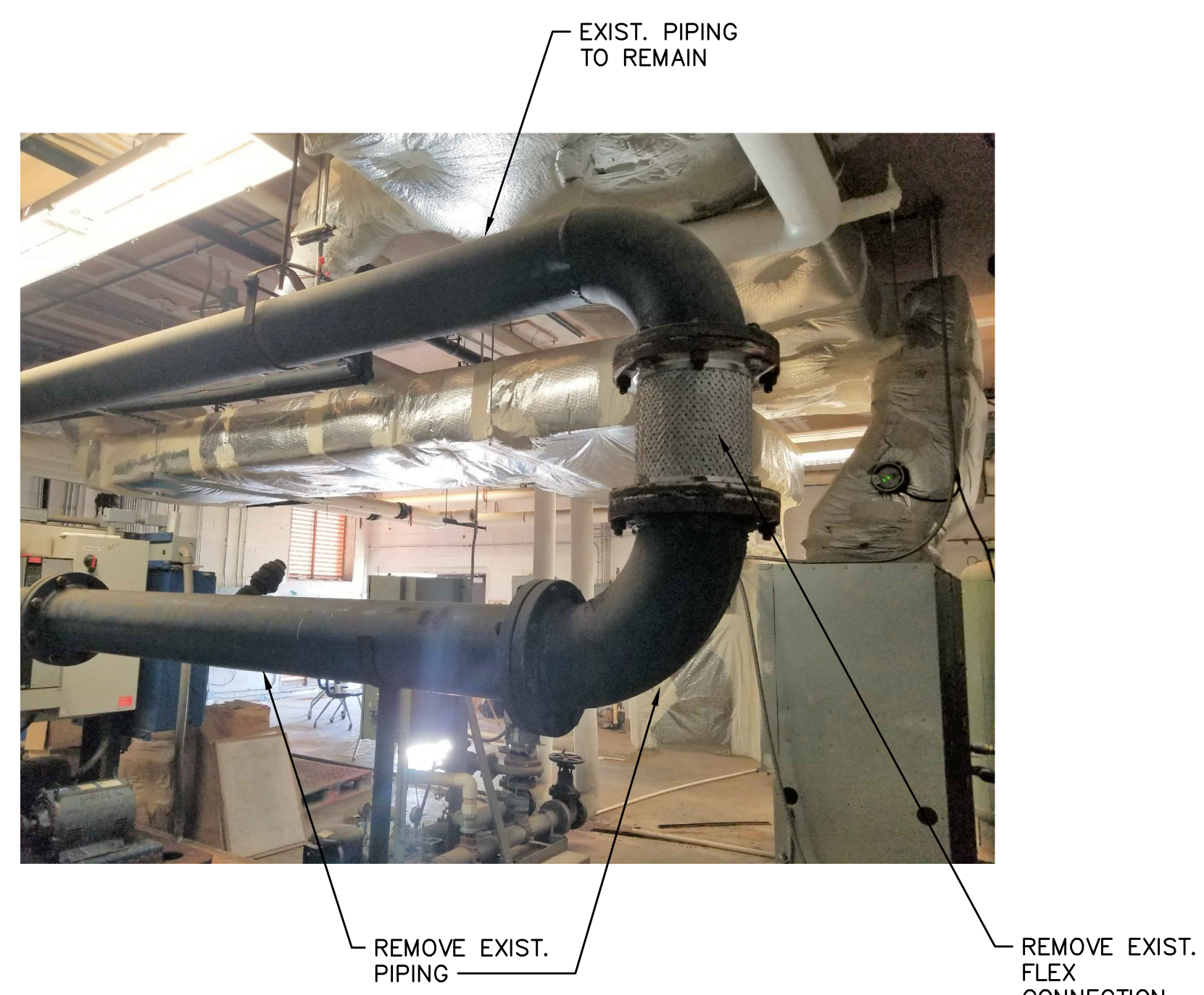
7 DEMOLITION PHOTO 7
SCALE: NTS



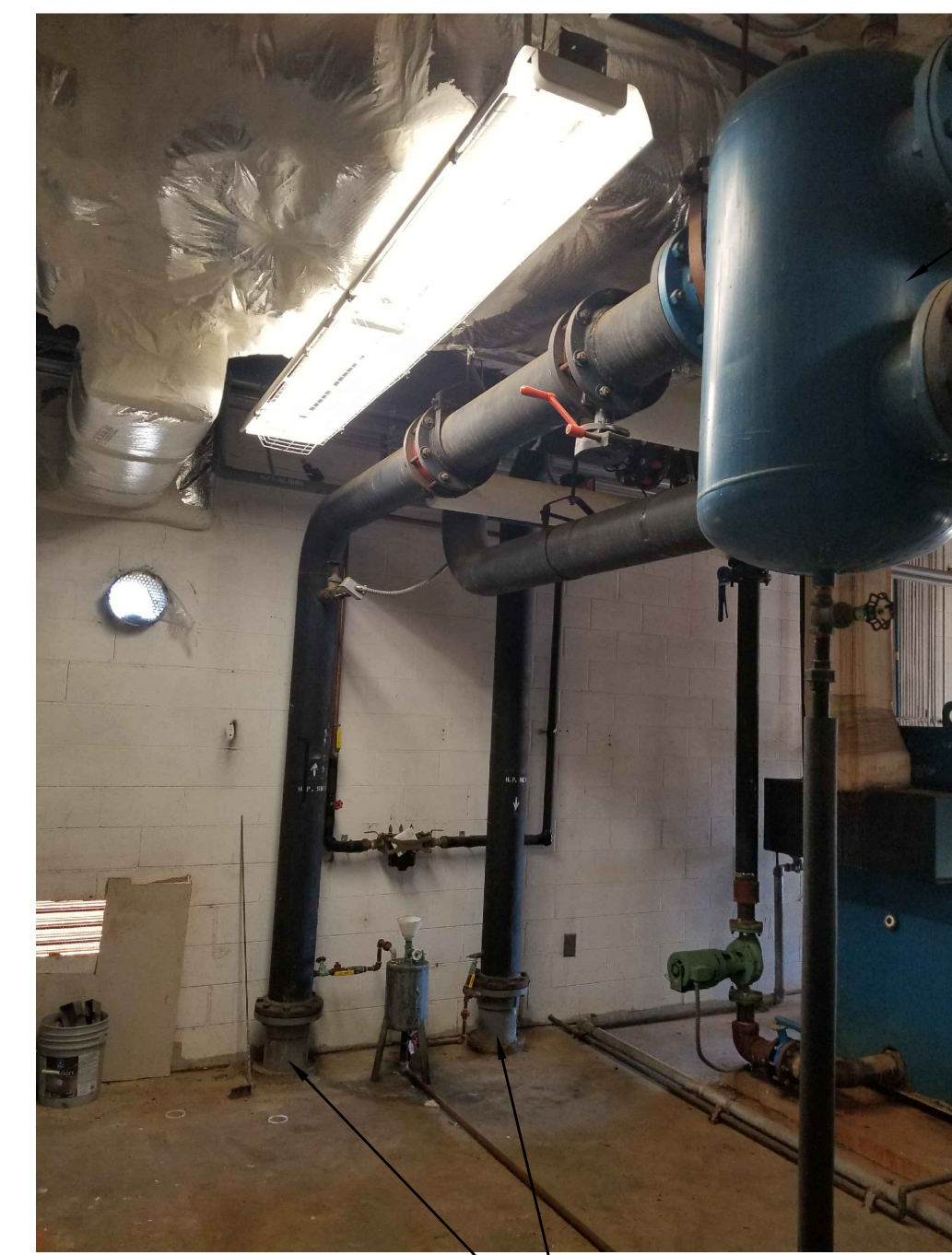
8 DEMOLITION PHOTO 8
SCALE: NTS



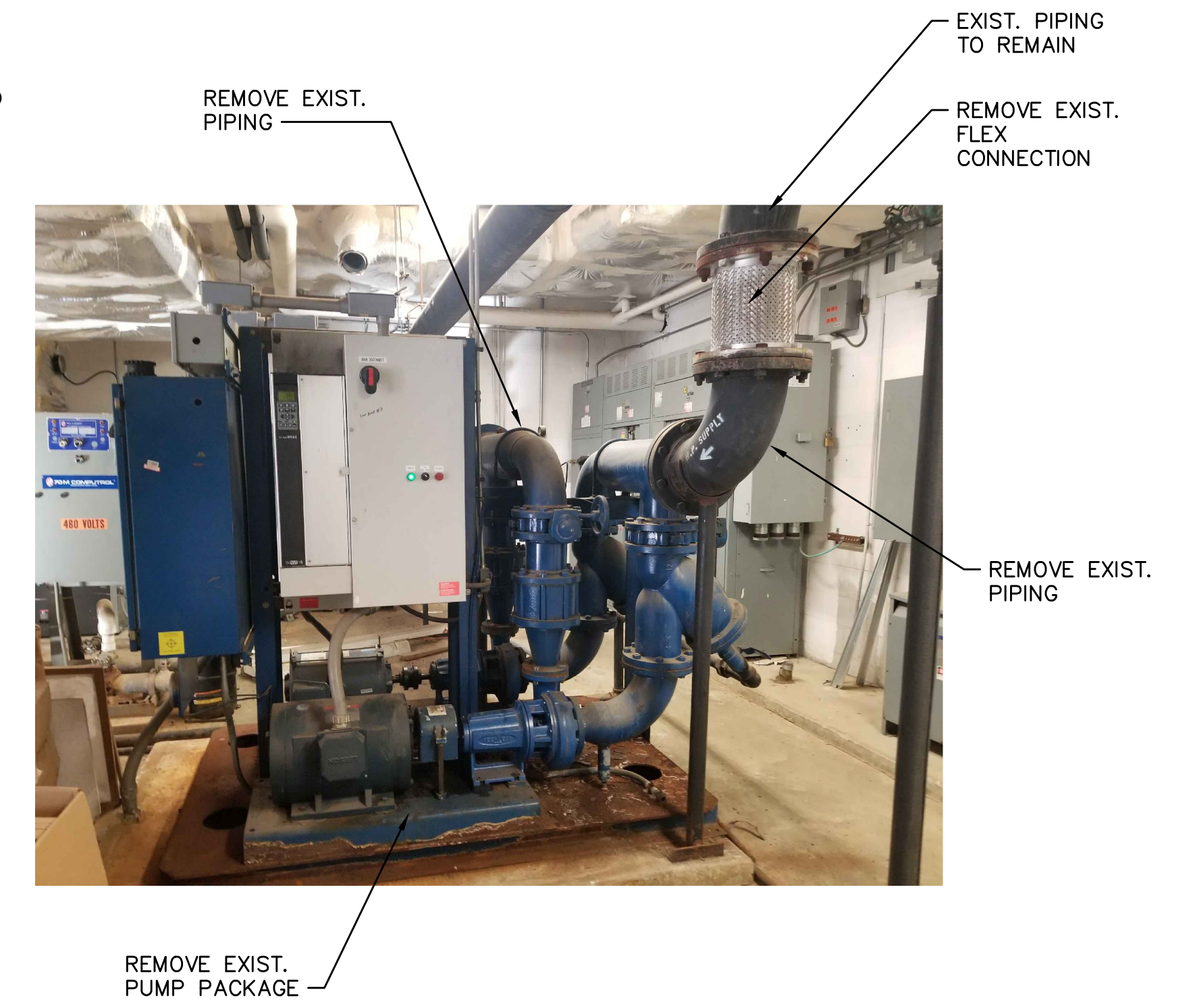
1 DEMOLITION PHOTO 1
SCALE: NTS



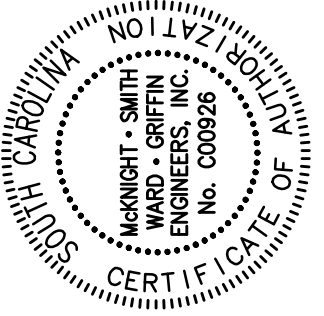
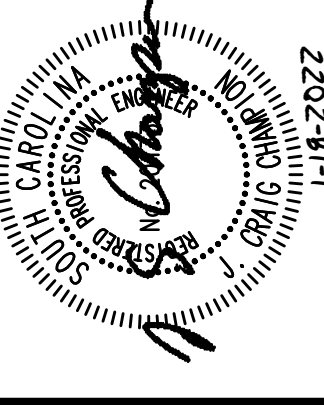
2 DEMOLITION PHOTO 2
SCALE: NTS



3 DEMOLITION PHOTO 3
SCALE: NTS



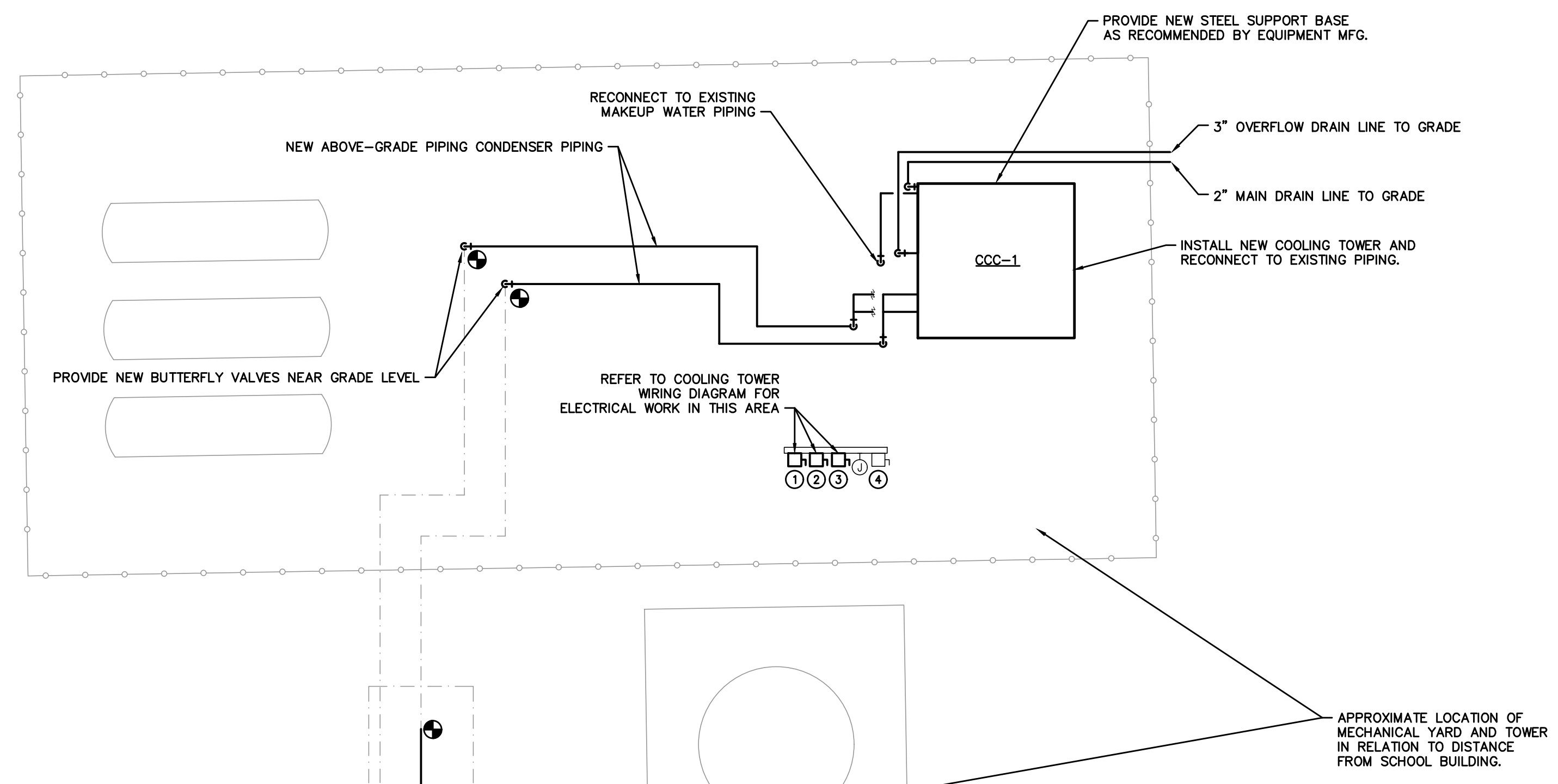
4 DEMOLITION PHOTO 4
SCALE: NTS



REVISION DATES
21-161 MSB/ACK JCM/MPA 1-18-2022

JOB TITLE
**LORIS HIGH SCHOOL
COOLING TOWER REPLACEMENT
Horry County School District**
SOUTH CAROLINA
LORIS

SHEET TITLE
DEMOLITION PHOTOS



SCOPE OF WORK

TOWER SHALL BE A BAC FXV TOWER OR EQUAL BY EVAPCO OR MARLEY. ALTERNATE MANUFACTURERS WILL NOT BE CONSIDERED.

DISCONNECT EXISTING CONDENSER WATER PIPING AT GRADE AS NOTED AND INSTALL BUTTERFLY VALVES ON EACH PIPE FOR SERVICE. CONNECT ALL CONDENSER WATER SUPPLY, RETURN, MAKEUP, DRAIN, ETC. TO NEW CLOSED CIRCUIT COOLER TOWER. PROVIDE HEAT TAPE ON ALL ABOVE GRADE PIPING.

MODIFY EXISTING CONCRETE PAD AS REQUIRED. PROVIDE ANY ADDITIONAL STEEL SUPPORT RECOMMENDED BY TOWER MANUFACTURER. IF NEW TOWER REQUIRES ANY MODIFICATIONS OF THE EXISTING FENCING, INCORPORATE MODIFICATIONS INTO THE PROPOSAL.

RE-ESTABLISH INTERFACE WITH BUILDING AUTOMATION SYSTEM FOR PROPER TOWER OPERATION. WORK WILL BE DONE DIRECTLY FOR HCS THROUGH CMI. VARIABLE SPEED DRIVES FOR THE TOWER WILL BE PROVIDED BY CMI.

EXISTING TOWER CHEMICAL TREATMENT SYSTEM SHALL BE MODIFIED AS REQUIRED TO SUPPLY PROTECTION TO THE TOWER BASIN. CHEMICAL TREATMENT WORK SHALL BE PROVIDED BY NALCO COMPANY, LLC.

RECONNECT TO THE EXISTING POWER. BASED ON THE ORIGINAL PLANS, THE EXISTING TOWER IS 460 VOLT/ 3 PHASE. TOWER HAS TWO FAN MOTORS, ONE 20 HP AND ONE 10 HP. THE EXISTING BASIN HEATER IS 15 KW (460/3). THE PUMP IS 40HP, 460V/3 PHASE. MODIFY THE POWER AS REQUIRED (INCLUDING NEW BREAKERS, STARTERS, ETC.) FOR OPERATION OF THE NEW SYSTEM.

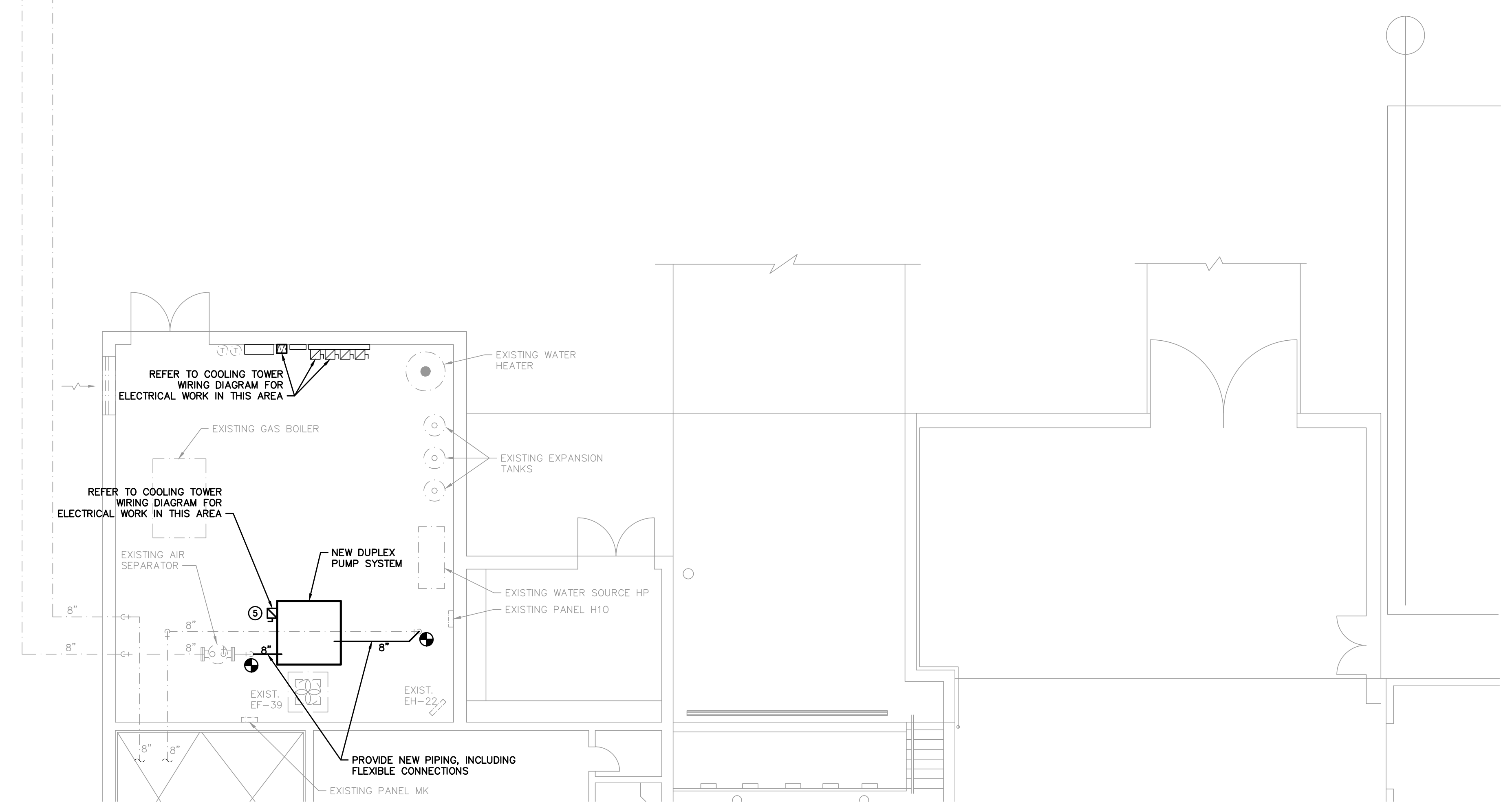
DISCONNECT PIPING TO EXISTING UNDERGROUND STORAGE TANK AND CAP. PIPING SHALL FLOW FROM BUILDING THROUGH CLOSED CIRCUIT COOLER AND TANK WILL BE REMOVED FROM SERVICE. TANK TO REMAIN.

TEST AND BALANCE TO CONFIRM WATER FLOWS THROUGH THE COOLER WATER COIL WILL BE PERFORMED BY THE OWNER.

FURNISH A ONE-YEAR PARTS AND LABOR WARRANTY ON THE INSTALLATION OF THE CLOSED-CIRCUIT COOLER

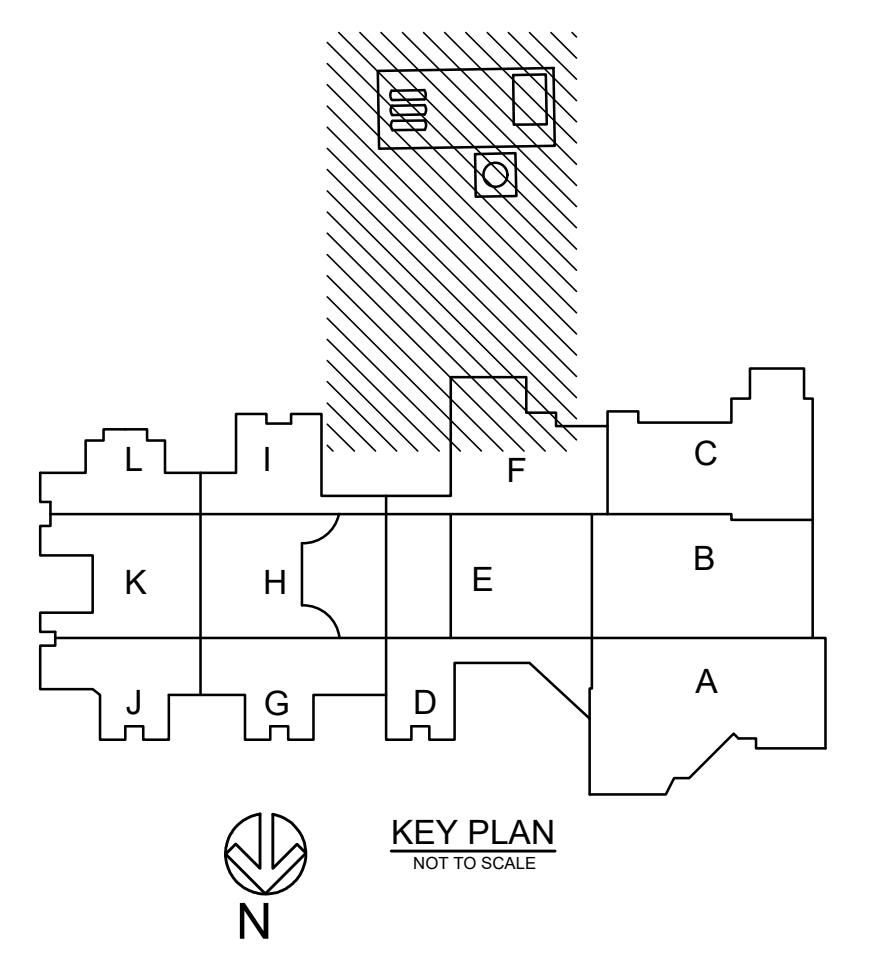
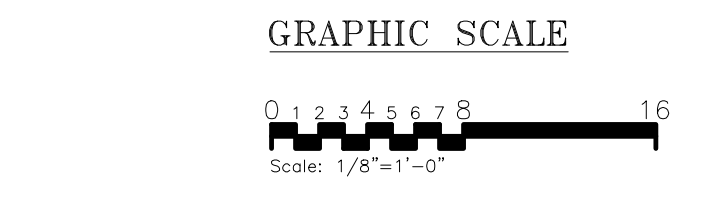
PROVIDE 8" SCHEDULE 80 PVC BYPASS PIPING TO REMOVE EXISTING WATER STORAGE TANK FROM PIPING SYSTEM. FIELD VERIFY EXACT LOCATION AND LENGTH.

APPROXIMATE LOCATION OF UNDERGROUND CONDENSER WATER PIPING.



1 PARTIAL FLOOR PLAN - AREA F
SCALE: 1/8" = 1'-0"

RENOVATION LEGEND	
	NEW EQUIPMENT
	EXISTING
	CONNECT TO EXISTING



SCOPE OF WORK

TOWER SHALL BE A BAC FXV TOWER OR EQUAL BY EVAPCO OR MARLEY. ALTERNATE MANUFACTURERS WILL NOT BE CONSIDERED.

DISCONNECT EXISTING CONDENSER WATER PIPING AT GRADE AS NOTED AND INSTALL BUTTERFLY VALVES ON EACH PIPE FOR SERVICE. CONNECT ALL CONDENSER WATER SUPPLY, RETURN, MAKEUP, DRAIN, ETC. TO NEW CLOSED CIRCUIT COOLER TOWER. PROVIDE HEAT TAPE ON ALL ABOVE GRADE PIPING.

MODIFY EXISTING CONCRETE PAD AS REQUIRED. PROVIDE ANY ADDITIONAL STEEL SUPPORT RECOMMENDED BY TOWER MANUFACTURER. IF NEW TOWER REQUIRES ANY MODIFICATIONS OF THE EXISTING FENCING, INCORPORATE MODIFICATIONS INTO THE PROPOSAL.

RE-ESTABLISH INTERFACE WITH BUILDING AUTOMATION SYSTEM FOR PROPER TOWER OPERATION. WORK WILL BE DONE DIRECTLY FOR HCS THROUGH CMI. VARIABLE SPEED DRIVES FOR THE TOWER WILL BE PROVIDED BY CMI.

EXISTING TOWER CHEMICAL TREATMENT SYSTEM SHALL BE MODIFIED AS REQUIRED TO SUPPLY PROTECTION TO THE TOWER BASIN. CHEMICAL TREATMENT WORK SHALL BE PROVIDED BY NALCO COMPANY, LLC.

RECONNECT TO THE EXISTING POWER. BASED ON THE ORIGINAL PLANS, THE EXISTING TOWER IS 460 VOLT/ 3 PHASE. TOWER HAS TWO FAN MOTORS, ONE 20 HP AND ONE 10 HP. THE EXISTING BASIN HEATER IS 15 KW (460/3). THE PUMP IS 40HP, 460V/3 PHASE. MODIFY THE POWER AS REQUIRED (INCLUDING NEW BREAKERS, STARTERS, ETC.) FOR OPERATION OF THE NEW SYSTEM.

DISCONNECT PIPING TO EXISTING UNDERGROUND STORAGE TANK AND CAP. PIPING SHALL FLOW FROM BUILDING THROUGH CLOSED CIRCUIT COOLER AND TANK WILL BE REMOVED FROM SERVICE. TANK TO REMAIN.

TEST AND BALANCE TO CONFIRM WATER FLOWS THROUGH THE COOLER WATER COIL WILL BE PERFORMED BY THE OWNER.

FURNISH A ONE-YEAR PARTS AND LABOR WARRANTY ON THE INSTALLATION OF THE CLOSED-CIRCUIT COOLER

**McKNIGHT · SMITH
WARD · GRIFFIN**
ENGINEERS, INCORPORATED
4223 South Boulevard
Tomball, TX 77480
714/507-2112

21-161

1-18-2022

1-18-2022

JOB NUMBER: 21-161

DESIGNED BY: MSB/ACK

CHECKED BY: JCC/MPA

DATE: 1-18-2022

REVISION DATES

NO.	DATE	DESCRIPTION

JOB TITLE: LORIS HIGH SCHOOL COOLING TOWER REPLACEMENT Horry County School District

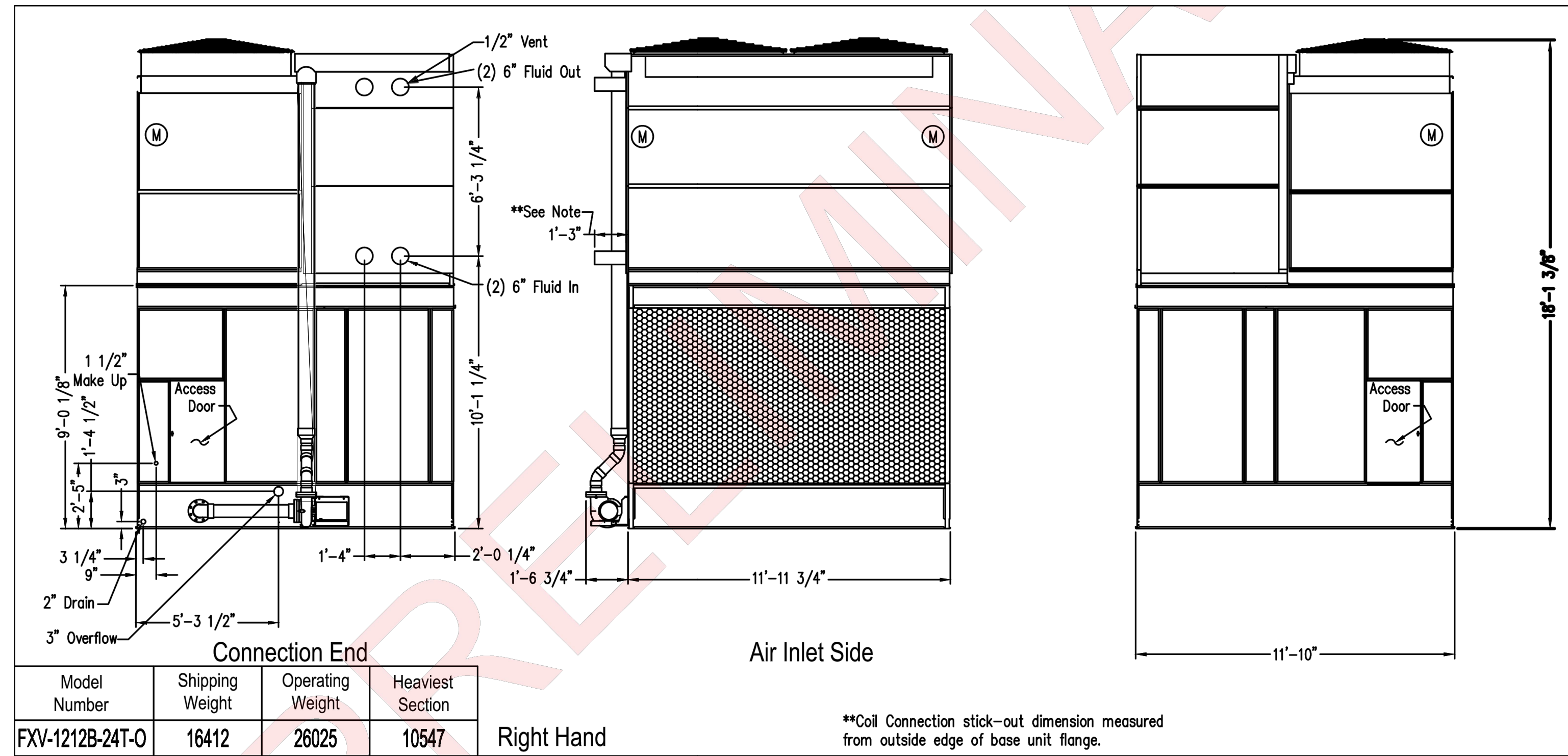
SOUTH CAROLINA

SHEET TITLE: PARTIAL FLOOR PLAN - AREA "F"

LORIS

SHEET: ME-1

4 OF 6



2 CLOSED CIRCUIT COOLER DETAIL
SCALE: NTS

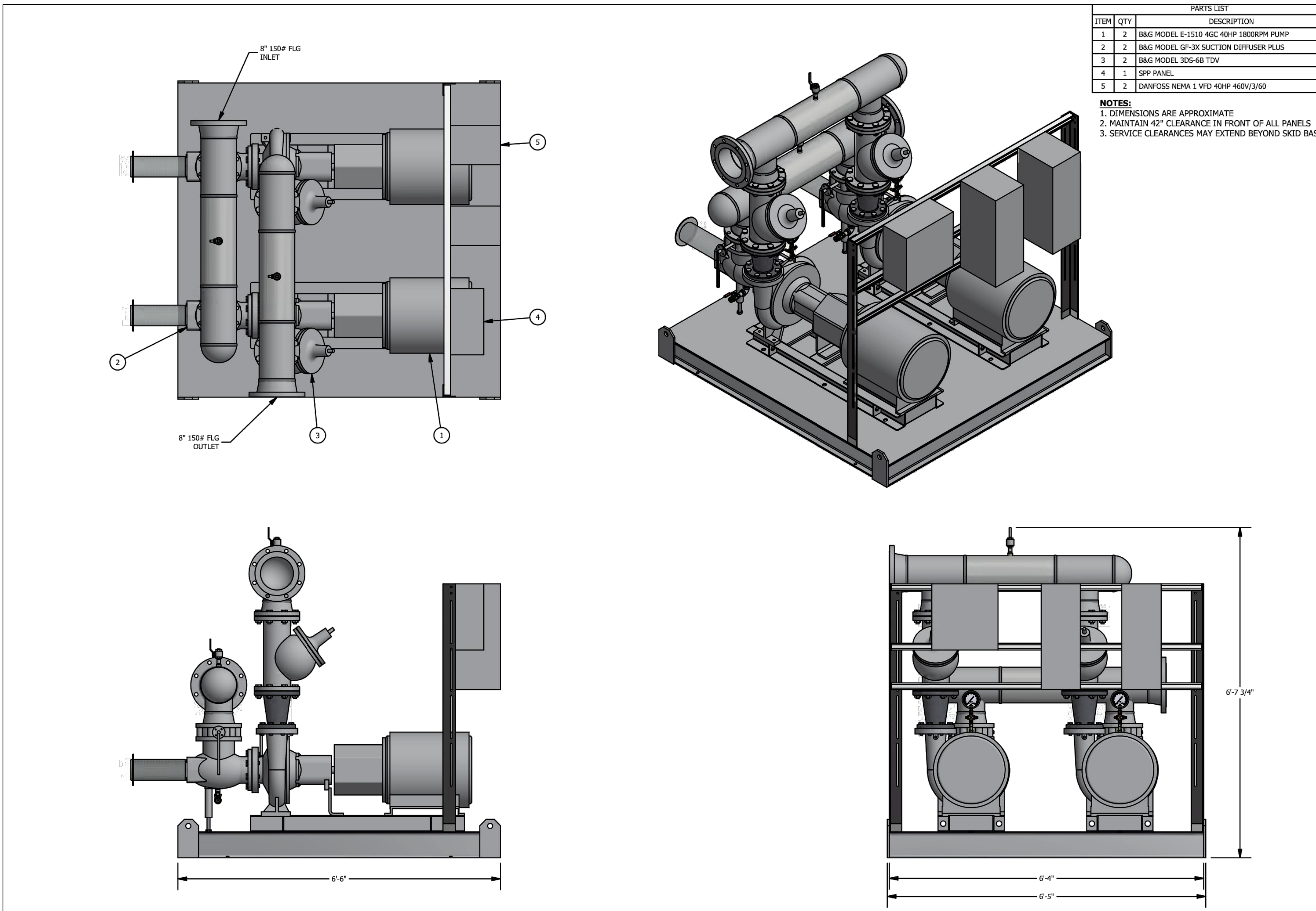
Unit Tag	Serves	Capacity Data					Fan Motor Data				Spray Pump Motor			Basin Heater			Mfr. & Model No.	Remarks		
		GPM	EWT (F)	LWT (F)	PD (psig)	Amb W/B Temp (F)	Qty	HP	Volts	Phase	Qty	HP	Volts	Phs	Qty	KW (ea)			Volts	Phs
CCC-1	EXIST. BLDG. LOOP	1100	102	92	8.41	80	2	15	460	3	1	7.5	460	3	1	12.0	460	3	BAC FXV-1212B-25T-0	1-4

1. MODEL NUMBER BASED ON BAC. SEE APPROVED MFG. LIST FOR ACCEPTABLE MFGS.
2. SEPARATE ELECTRICAL CONNECTIONS FOR MOTOR AND HEATER.
3. WRAP EXPOSED CWS/R PIPES W/HEAT TAPE.

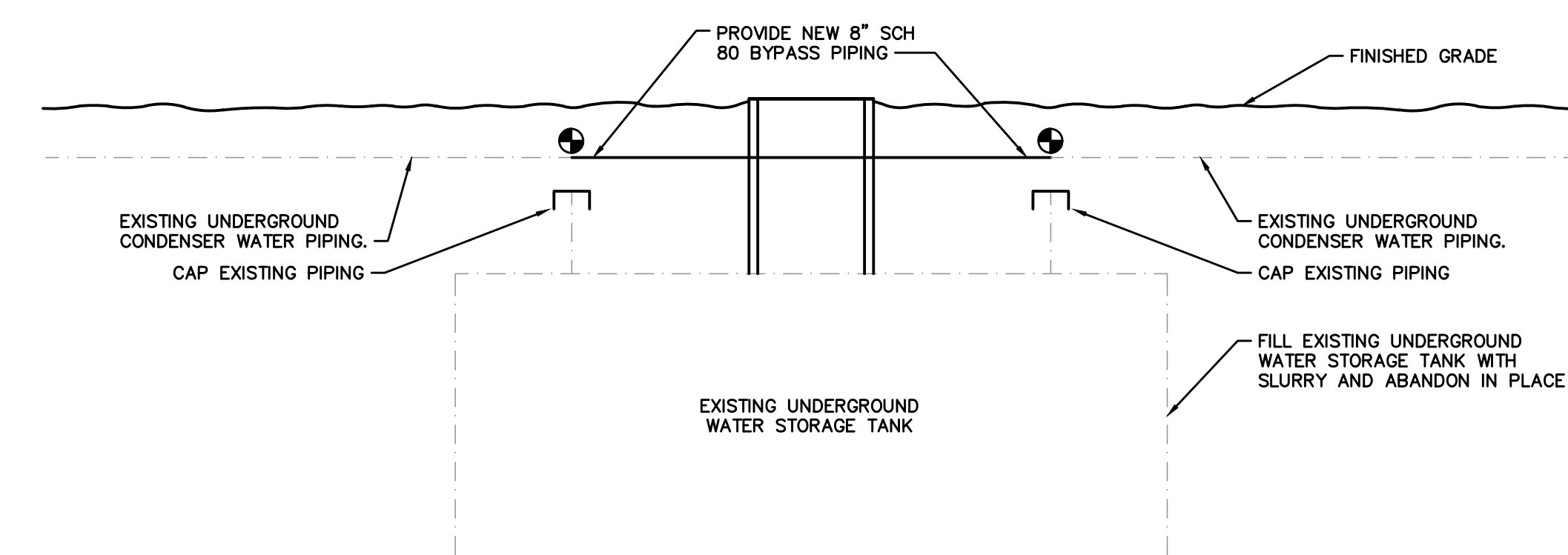
Tag	Service	GPM	Head (ft.)	RPM	Eff. (%)	HP	Volts	Phase	Type	Mfr. & Model No.	Remarks
P-1	CONDENSER WATER LOOP	700	175	1800	79.2	40	460	3	END SUCTION	B&G e1510 4GC	1-7
P-2	CONDENSER WATER LOOP	700	175	1800	79.2	40	460	3	END SUCTION	B&G e1510 4GC	1-7

1. MODEL NUMBERS BASED ON B & G. SEE APPROVED MFG. LIST FOR ACCEPTABLE MFGS.
2. PUMPS SHALL BE PART OF A COMPLETE PACKAGED PUMPING SYSTEM PACKAGED BY HYFAB. BASE SHALL MEASURE 78" X 76".
3. INCLUDE 3DS-6B TRIPLE DUTY VALVES, GF-3X SUCTION DIFFUSERS, BUTTERFLY VALVES FOR PUMP ISOLATION, AND PRESSURE GAUGES.
4. DANFOSS FC102 VARIABLE FREQUENCY DRIVES, NEMA 1, MAIN FUSED DISCONNECT.
5. SINGLE POINT POWER CONNECTION TO PACKAGE.
6. PACKAGE SHALL BE UL LISTED.
7. 8" SUPPLY AND RETURN HEADERS.

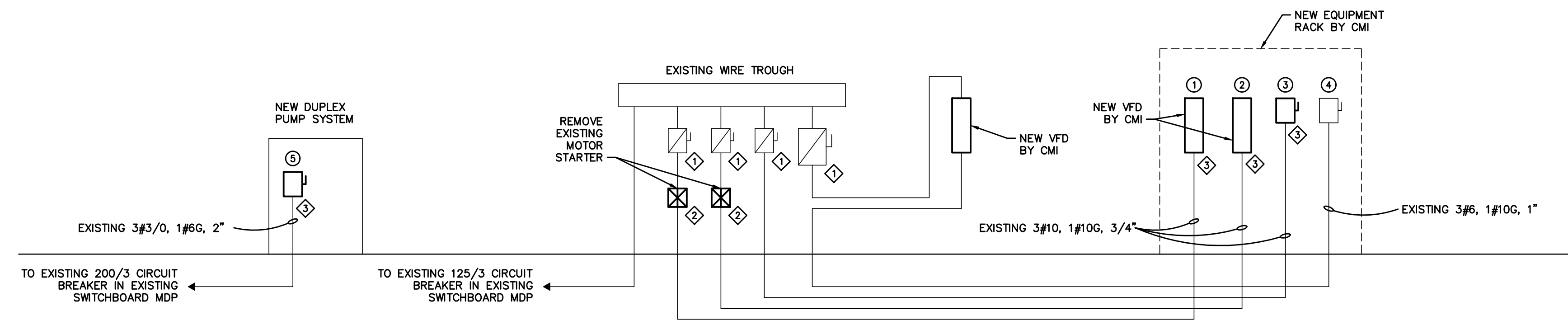
APPROVED MANUFACTURER LISTING - MECHANICAL	
THE FOLLOWING MANUFACTURER'S LISTING (ALPHABETICALLY ORDERED) IS PROVIDED FOR BIDDING PURPOSES AND DOES NOT IMPLY OR PROVIDE A GUARANTEE OF SUBMITTAL APPROVAL. ALL ITEMS SUBMITTED SHALL MEET OR EXCEED THE MINIMUM SPECIFIED DESIGN AND QUALITY CRITERIA IN THIS SET OF CONSTRUCTION DOCUMENTS. ANY BIDDER THAT INTENDS TO SUBMIT USING A MANUFACTURER NOT LISTED BELOW MAY REQUEST A PRIOR APPROVAL IN ACCORDANCE WITH THE ENTIRETY OF THE PROJECT BID DOCUMENTS, REFER TO THE ARCHITECT'S GENERAL CONDITIONS AND BIDDING REQUIREMENTS.	
THE BIDDER IS RESPONSIBLE FOR INCLUDING ALL COSTS ASSOCIATED WITH SUBSTITUTED EQUIPMENT, INCLUDING BUT NOT LIMITED TO, CODE AND MANUFACTURER'S REQUIRED MAINTENANCE AND ACCESS CLEARANCE, COORDINATION WITH ALL OTHER BUILDING TRADES, AND INSTALLATION OF DUCTWORK, PIPING, ETC. BIDDER SHALL BEAR RESPONSIBILITY FOR ALL ASSOCIATED COSTS AND ADDITIONAL COSTS RESULTING FROM SUBSTITUTED ITEMS SHALL NOT BE CONSIDERED FOR APPROVAL AFTER BIDS ARE AWARDED.	
ITEM CLOSED CIRCUIT COOLERS PUMPS & HYDRONIC EQUIPMENT	MANUFACTURER'S BAC, MARLEY ARMSTRONG, BELL & GOSSETT, TACO



1 PUMPING PACKAGE DETAILS
SCALE: NTS



3 SECTION AT EXISTING UNDER-GROUND WATER STORAGE TANK
SCALE: NTS



1 COOLING TOWER WIRING DIAGRAM
NOT TO SCALE

- NOTES:**
- ◇ REPLACE EXISTING FUSES WITH NEW AS REQUIRED.
 - ◇ REPLACE EXISTING MOTOR STARTER WITH NEW AS REQUIRED FOR NEW 15 HP PUMP.
 - ◇ RECONNECT EXISTING CONDUCTORS TO NEW OR EXISTING SWITCH AS REQUIRED.

EQUIPMENT CONNECTION SCHEDULE											
SYM.	EQUIPMENT	LOAD	VOLT/ PHASE	DISCONNECT				CONDUCTORS	RACEWAY		NOTES
				TYPE	RATING	POLES	TRIP/FUSE		ENCL.	TYPE	
①	FAN	15HP	480/3				BUILT INTO VFD BY CMI	3#10, 1#10G	LFMC	3/4"	
②	FAN	15HP	480/3				BUILT INTO VFD BY CMI	3#10, 1#10G	LFMC	3/4"	
③	BASIN HEATER	12KW	480/3	NFDS	30A	3	—	3#10, 1#10G	LFMC	3/4"	
④	PUMP	7.5HP	480/3				EXISTING 100/3 DISCONNECT SWITCH	3#10, 1#10G	LFMC	3/4"	
⑤	DUPLEX PUMP SYSTEM	2@40HP	480/3	FDS	200A	3	FPN	3#3/0, 1#6G	LFMC	2"	

LEGEND			STARTER TYPES
DISCONNECT TYPES	DISCONNECT ENCLOSURE TYPES	RACEWAY TYPES	CFVNR = COMBINATION FULL VOLTAGE, NONREVERSING
ETCB = ELECTRONIC-TRIP CIRCUIT BREAKER	1 = NEMA 1 ENCLOSURE	EMT = ELECTRIC METALLIC TUBING	
FDS = FUSIBLE DISCONNECT SWITCH	3R = NEMA 3R ENCLOSURE	FMC = FLEXIBLE METAL CONDUIT	CONTROL DEVICES
MCP = MOTOR CIRCUIT PROTECTOR	4 = NEMA 4 ENCLOSURE	IMC = INTERMEDIATE METAL CONDUIT	HOA = HAND-OFF-AUTO
NFDS = NON-FUSIBLE DISCONNECT SWITCH	4X = NEMA 4X ENCLOSURE	LFMC = LIQUID-TIGHT FLEXIBLE METAL CONDUIT	RPL = RED PILOT LIGHT
ST/DS = COMBINATION STARTER/DISCONNECT SWITCH	FPN = FUSE PER NAMEPLATE	PVC = NON-METALLIC PVC CONDUIT	AUX = AUXILIARY CONTACTS (2 N.O., 1 N.C.)
TMCB = THERMAL-MAGNETIC CIRCUIT BREAKER		RMC = RIGID METAL CONDUIT	CTSD = 50 VA CONTROL TRANSFORMER
TOG = HP RATED TOGGLE SWITCH			

NOTES

ALL ELECTRICAL CHARACTERISTICS SCHEDULED ABOVE ARE BASED ON INFORMATION AVAILABLE AT THE TIME OF DESIGN. ELECTRICAL CONTRACTOR SHALL VERIFY ELECTRICAL CHARACTERISTICS OF ALL EQUIPMENT WITH EQUIPMENT SUPPLIER(S) PRIOR TO ROUGHING, AND SHALL VERIFY EXACT LOCATION AND EXACT TYPE OF CONNECTION. ALL EQUIPMENT SHALL BE PROPERLY AND SECURELY GROUNDED. ANY SIGNIFICANT CHANGES IN LOCATION, ELECTRICAL REQUIREMENTS, OR TYPE OF CONNECTION REQUIRED FOR ANY EQUIPMENT SCHEDULED ABOVE SHALL BE BROUGHT TO THE ATTENTION OF THE ENGINEER IN WRITING PRIOR TO PROCEEDING.

CONDUCTORS AND RACEWAY SPECIFIED IN THE ABOVE SCHEDULE ARE FOR FINAL CONNECTION TO UNIT AND SHALL BE EXTENDED FROM THE DISCONNECT SHOWN ON THE FLOOR PLANS TO THE EQUIPMENT TERMINATION BOX.

CONDUIT AND BOXES REQUIRED FOR EQUIPMENT CONNECTIONS SHALL BE INSTALLED IN SUCH A WAY AS TO NOT COVER UP EQUIPMENT NAMEPLATES, SERVICE AREAS, AIR FLOW AREAS, ETC.

ELECTRICAL SPECIFICATIONS

1. PROVIDE ALL WORK AND MATERIALS REQUIRED FOR A COMPLETE AND WORKMANLIKE INSTALLATION AS SHOWN BY THE THE DRAWINGS AND SPECIFIED HEREIN.
2. ALL ELECTRICAL WORK SHALL BE IN ACCORDANCE WITH THE NATIONAL ELECTRICAL CODE, STATE, AND LOCAL CODES. ELECTRICAL MATERIALS SHALL BE NEW AND SHALL COMPLY WITH ALL APPLICABLE NEMA, U.L., ANSI, OSHA, AND ICEA STANDARDS.
3. PERFORM ALL CUTTING AND PATCHING NECESSARY FOR THE PROPER INSTALLATION OF THIS WORK AND REPAIR ANY DAMAGE DONE AS A RESULT OF THIS WORK.
4. AN ELECTRICAL INSPECTION CERTIFICATE SHALL BE ISSUED BY THE AUTHORITIES HAVING JURISDICTION BEFORE WORK WILL BE APPROVED FOR FINAL PAYMENT.
5. ALL ELECTRICAL CONDUIT AND CONDUCTORS WHICH ARE ABANDONED SHALL EITHER BE REMOVED COMPLETELY OR MECHANICALLY AND ELECTRICALLY SECURED. BACK BOXES OF OUTLETS AND SWITCHES SHOWN TO BE REMOVED FROM THE WALLS REMAINING SHALL BE REMOVED AND THE WALL PROPERLY PATCHED. ALL EXISTING ELECTRICAL OUTLETS NOT SHOWN TO BE REMOVED SHALL BE RECONNECTED. ALL MATERIALS AND EQUIPMENT NOTED TO BE REUSED IN THE NEW WORK SHALL BE CLEANED AND, IF NECESSARY, REPAIRED AND SHALL BE STORED AND PROTECTED ON THE SITE. ALL REUSED FIXTURES SHALL BE RELAMPED. PROVIDE OUTLET BOX EXTENSIONS WHERE NEW WALL FINISHES REQUIRED ADDITIONAL OUTLET BOX DEPTH. RELOCATE ANY EXISTING CONDUITS, CONDUCTORS, FIXTURES, AND OUTLETS WHERE REQUIRED BY THIS WORK.
6. ALL CONDUCTORS SHALL BE COPPER, TYPE THHN/THWN, AND SOLID OF #10, #12, AND #14 AWG AND STRANDED FOR #8 AWG AND LARGER. BRANCH CIRCUIT CONDUCTORS SHALL NOT BE SMALLER THAN #12 AWG. CONDUCTORS SHALL BE COLOR CODED BLACK/RED/BLUE FOR 120/208 VOLT AND 240 VOLT SYSTEMS. CONDUCTORS SHALL BE COLOR CODED BROWN/ORANGE/YELLOW FOR 277/480 VOLT SYSTEM, (PHASE A/ PHASE B/ PHASE C) CONDUCTORS SHALL BE CONTINUOUS FROM OUTLET TO OUTLET. NO SPLICES SHALL BE MADE EXCEPT WITHIN OUTLET OR JUNCTION BOXES. SPLICES SHALL BE MADE BY TWISTING SECURELY AND FASTENING WITH U.L. LISTED, PRESSURE-TYPE TWIST ON INSULATED-WIRE CONNECTORS OF THE SAME TEMPERATURE RATING AS THE CONDUCTORS. SPLICES TO LIGHT FIXTURE LEADS SHALL BE MADE WITH PLASTIC WIRE NUTS.
7. ALL WIRING SHALL BE IN CONDUIT. WHERE CONCEALED WIRING SHALL BE METAL CLAD (MC) CABLE UNLESS OTHERWISE NOTED. WHERE EXPOSED, WIRING SHALL BE IN ELECTRICAL METALLIC TUBING (EMT), 1/2-INCH TRADE SIZE MINIMUM. WHERE EMT IS USED, FITTINGS SHALL BE THREADLESS-COMPRESSION TYPE GALVANIZED STEEL. WHERE FLEXIBLE METAL CONDUIT IS USED, CONNECTORS SHALL BE T & B NYLON-INSULATED "TITE-BITE".
8. OUTLET BOXES SHALL BE GALVANIZED SHEET STEEL. FIXTURE OUTLET BOXES ON CEILINGS SHALL NOT BE LESS THAN 4 INCHES OCTAGONAL OUTLET BOXES ON NEW GYPSUM DRYWALL WALLS SHALL BE 4 INCHES SQUARE WITH SQUARE-CUT COVER EXTENSIONS.
9. OUTLET AND JUNCTION BOXES SHALL BE CAST TYPE WITH THREADED HUBS. BOXES AND ENCLOSURES LARGER THAN 5 INCHES SQUARE SHALL BE NEMA 12.
10. ALL CONDUIT SHALL BE RUN AS HIGH AS POSSIBLE, PARALLEL WITH STRUCTURAL MEMBERS, SUPPORTED ON APPROVED TYPES OF GALVANIZED TRAPEZES, HANGERS, OR STRAPS.
11. LIQUID-TIGHT FLEXIBLE METAL CONDUIT SHALL BE USED FOR EQUIPMENT CONNECTIONS, BUT NOT AS A WIRING METHOD OTHERWISE.
12. DISCONNECT SWITCHES SHALL BE HEAVY-DUTY TYPE WITH REJECTION-TYPE FUSE CLIPS AND SUITABLE FOR 75°C CONDUCTOR TERMINATION.
13. COMBINATION STARTER UNIT SHALL CONSIST OF A MAGNETIC CONTROLLER AND THERMAL MAGNETIC CIRCUIT BREAKER IN A COMMON ENCLOSURE. CIRCUIT BREAKER SHALL BE MOLDED-CASE AUTOMATIC THERMAL-MAGNETIC TYPE, CALIBRATED FOR 40°C OR AMBIENT COMPENSATING AND SUITABLE FOR 75°C CONDUCTOR TERMINATIONS. COMBINATION STARTER SHALL HAVE A SHORT CIRCUIT INTERRUPTING RATING OF NOT LESS THAN 22,000 SYMMETRICAL AMPERES. CONTROLLER SHALL HAVE A STATIONARY ELECTROMAGNETIC CORE AND COIL ASSEMBLY, MOVABLE ARMATURE, YOKE WITH MOVABLE CONTACTS, STATIONARY CONTACTS, AUXILIARY CONTACTS, LINE AND LOAD TERMINAL CONNECTORS AND OVERCURRENT PROTECTIVE DEVICES. THE CORE AND COIL ASSEMBLY SHALL BE CAPABLE OF OPERATING SATISFACTORILY WITH VOLTAGES WITHIN 85% TO 110% OF THE VOLTAGE RATING. THE STATIONARY AND MOVABLE CONTACTS SHALL BE NON-CORRODING, NON-WELDING SILVER ALLOY CONTACTS. MOTOR CONTROLLERS SHALL BE PROVIDED WITH TWO NORMALLY OPEN AND ONE NORMALLY CLOSED AUXILIARY CONTACTS UNLESS OTHERWISE INDICATED. PUSH BUTTONS, SELECTOR SWITCHES, PILOT LIGHTS, AND REMOTE PUSH BUTTON STATIONS SHALL BE PROVIDED AS SCHEDULED ON DRAWINGS OR AS INDICATED. PUSHBUTTON STATIONS AND OTHER CONTROL DEVICES SHALL BE THE OIL-TIGHT HEAVY DUTY TYPE. PILOT LIGHTS SHALL BE LONG LIFE TYPE RATED 7500 HOURS MINIMUM. PROVIDE OWNER WITH TWO SPARE PILOT LIGHTS OF EACH SIZE AND TYPE USED. CONTROLLER SHALL INCLUDE MOTOR OVERLOAD PROTECTION IN EACH PHASE CONDUCTOR. OPERATING COILS SHALL BE FOR 115 VOLTS. CONTROLLER SHALL BE PROVIDED WITH MANUAL OVERLOAD RESET MOUNTED ON ENCLOSURE COVER.
14. A CONTINUOUS GREEN GROUND WIRE SHALL BE RUN WITH EACH CIRCUIT.
15. UPDATE PANEL DIRECTORY TO REFLECT ALL CHANGES REQUIRED BY THIS WORK.

McKNIGHT · SMITH
WARD · GRIFFIN
ENGINEERS, INCORPORATED
4223 South Boulevard
Tomball, TX 77375
714/282-0900

21-161

JOB NUMBER: 21-161

DESIGNER: MSB/ACK

CHECKED BY: JCM/MPA

DATE: 1-18-2022

REVISION DATES

JOB TITLE: LORIS HIGH SCHOOL COOLING TOWER REPLACEMENT Horry County School District

SOUTH CAROLINA

SCHEDULES AND DIAGRAMS

LORIS

SHEET TITLE

SHEET

ME-3

6 OF 6