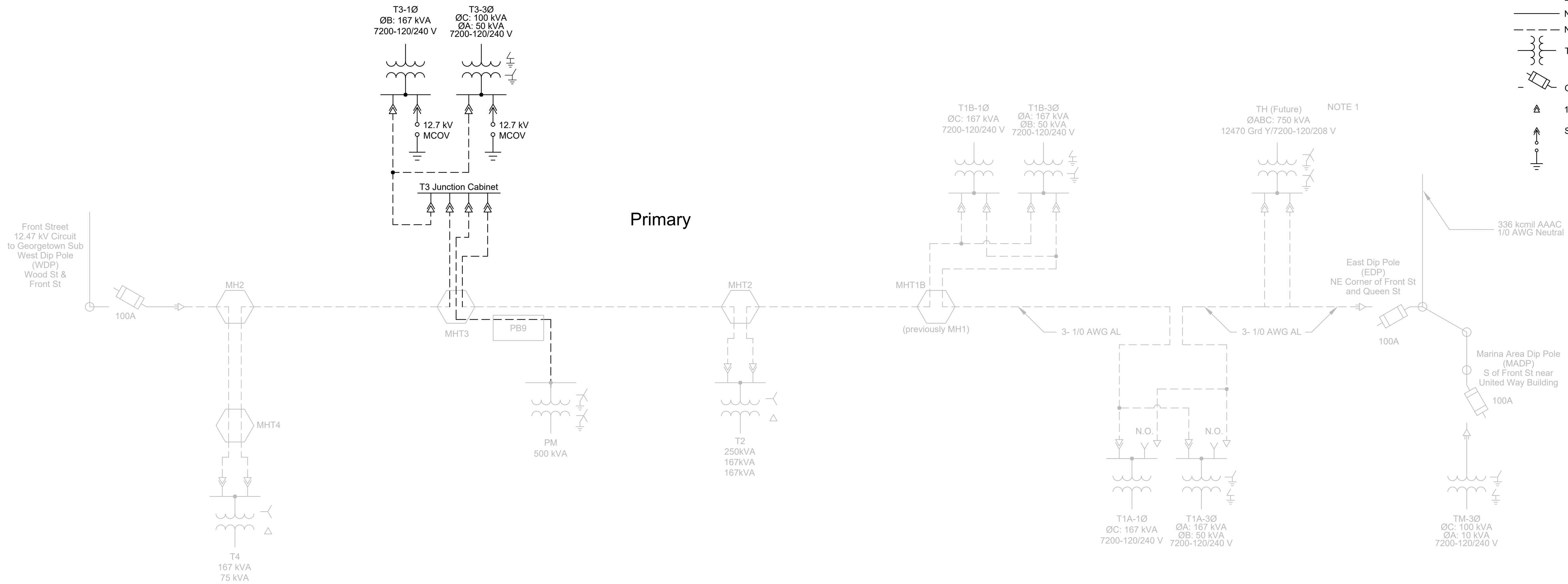


NOTES:

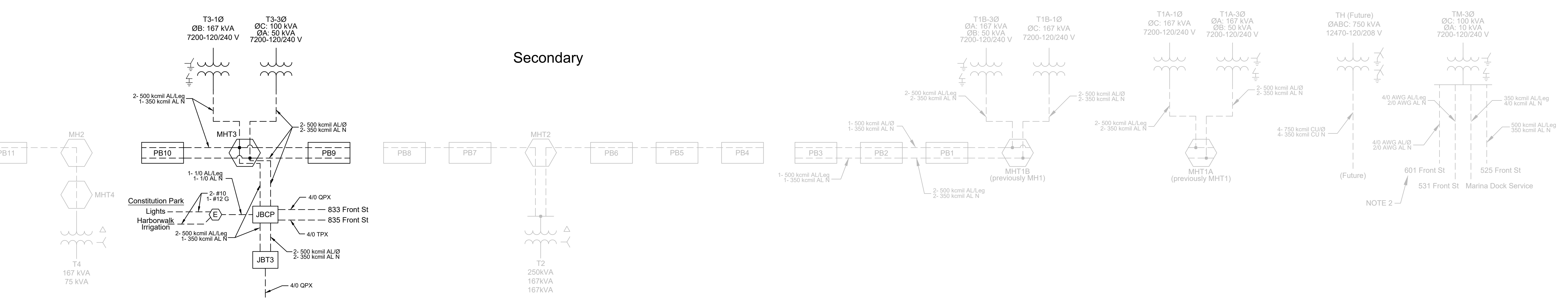
1. TRANSFORMER TO BE INSTALLED LATER BY OWNER. PRIMARY CONDUCTORS ARE IN TEMPORARY ELBOW JUNCTION CABINET.
2. 3Ø CIRCUIT TO 601 FRONT STREET NOT IN USE. CONDUCTORS ARE DEAD-ENDED IN SECONDARY PEDESTAL AT BASE OF OVERHEAD 1Ø SERVICE DIP POLE.

LEGEND:

- EXISTING EQUIPMENT
- - - EXISTING CABLE
- NEW EQUIPMENT
- - - NEW CABLE
- TRANSFORMER
- OVERHEAD FUSE
- ▲ 15 KV LOADBREAK ELBOW
- ⬆ SURGE ARRESTER



Primary



Secondary

<p>PRELIMINARY NOT TO BE USED FOR CONSTRUCTION</p>			<p>CITY OF GEORGETOWN GEORGETOWN, SC FRONT ST ELECTRIC UPGRADE - PH. 2 ONE-LINE DIAGRAM NEW</p>		
<p>REVISION 11/30/22</p>			<p>UTEC UTILITY TECHNOLOGY ENGINEERS - CONSULTANTS, PLLC P.O. Box 2629 • Asheboro, North Carolina • 27204</p>		
0	BID ISSUE	12/01/22	DWG. NO.	E2100-2	
NO.	REVISIONS	DATE	SCALE: NONE	JOB NO. 220901	SHEET NO. 2 OF 2

Dec 01, 2022, 9:43 am X:\Georgetown\Phase 2\E2100-2_1P2S11 One-Line New Rev.dwg Layer: E2100-2