

NOTE: This document contains a list of questions posed by vendor representatives after Addendum 1 was distributed and prior to 12/22/22. Vendors are encouraged to continue to reach out with questions up to the January 4, 2023 deadline, answers will be given in the form of additional addenda.

### **Bid/RFP Related Questions**

Q: Who are the decision makers for this RFP?

A: The evaluation team will work with the University upper administration to arrive at a final decision.

### **Operations Related Questions**

Q: What are the last two years of meal plan counts?

A: See Attachment A below.

Q: Do you have current meal plan daily rates?

A: See Attachment B on Addendum 1.

### **Facility & Maintenance Related Questions**

Q: Can we get a copy of the floor plans of retail and residential dining spaces?

A: See attached CAD drawings.

### **Retail Dining & Catering Related Questions**

Q: Do summer camps fall into the catering revenue?

A: This is handled on a case by case basis. Depending on the needs of the specific camp it may fall under either the dining hall or catering services. However, there is very little catering done for summer camps.

**Attachment A**  
**Meal Plan Counts**

**Spring 2021**

	<b>7</b>	<b>5</b>	<b>160</b>	<b>Total</b>	<b>\$1,000</b>
	<b><u>Day</u></b>	<b><u>Day W/D\$</u></b>	<b><u>Block W/D\$</u></b>	<b><u>Board</u></b>	<b><u>D\$</u></b>
Spring 2021	330	257	14	601	54

**Fall 2021**

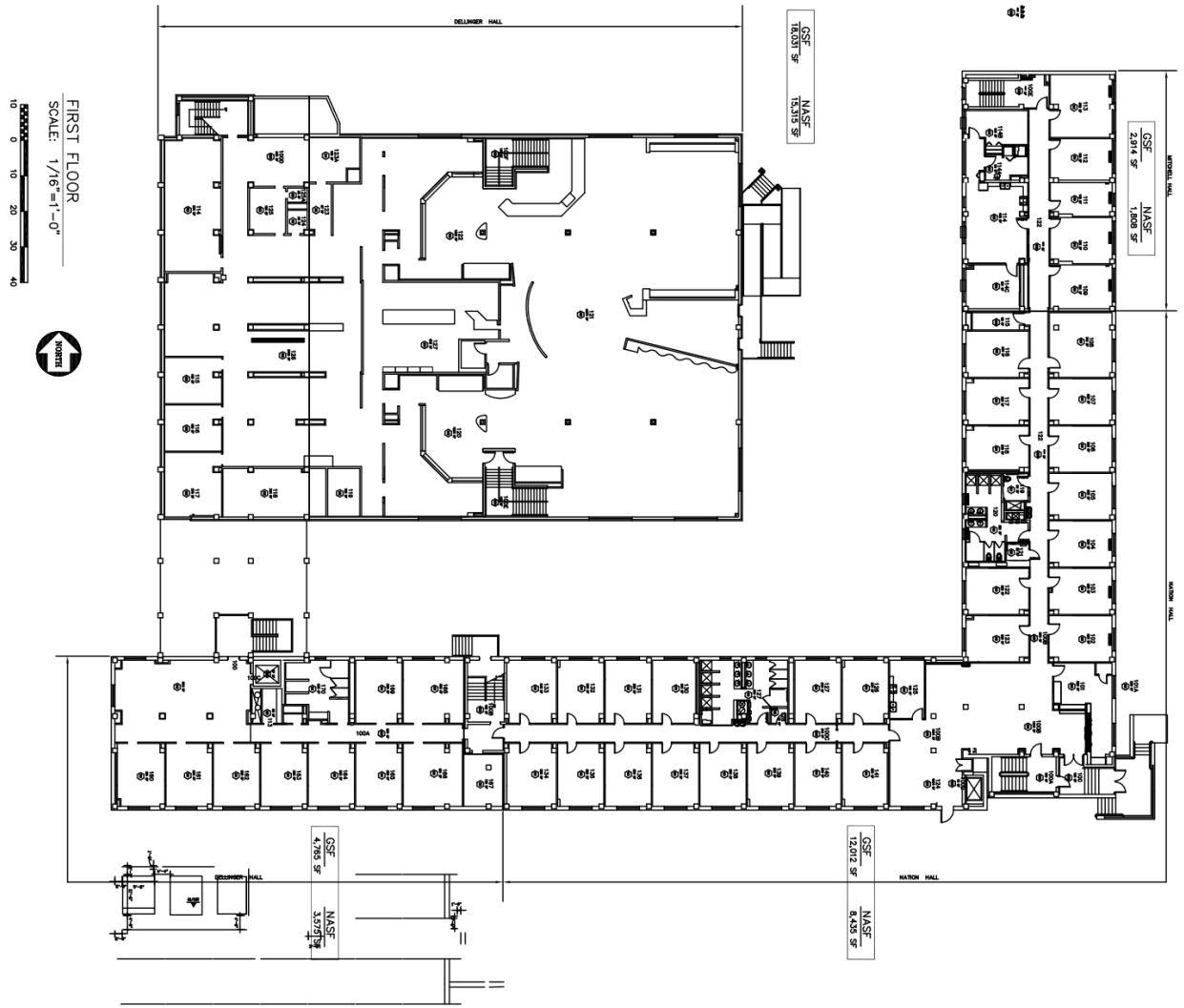
	<b>7</b>	<b>5</b>	<b>Total</b>	<b>\$1,000</b>
	<b><u>Day</u></b>	<b><u>Day W/D\$</u></b>	<b><u>Board</u></b>	<b><u>D\$</u></b>
Fall 2021	475	289	764	61

**Spring 2022**

	<b>7</b>	<b>5</b>	<b>Total</b>	<b>\$1,000</b>
	<b><u>Day</u></b>	<b><u>Day W/D\$</u></b>	<b><u>Board</u></b>	<b><u>D\$</u></b>
Spring 2022	393	322	714	79

**Fall 2022**

	<b>7</b>	<b>5</b>	<b>Total</b>	<b>\$1,000</b>
	<b><u>Day</u></b>	<b><u>Day W/D\$</u></b>	<b><u>Board</u></b>	<b><u>D\$</u></b>
Fall 2022	434	340	774	76





FIRST FLOOR  
 SCALE: 1/16"=1'-0"  
 10 0 10 20 30 40

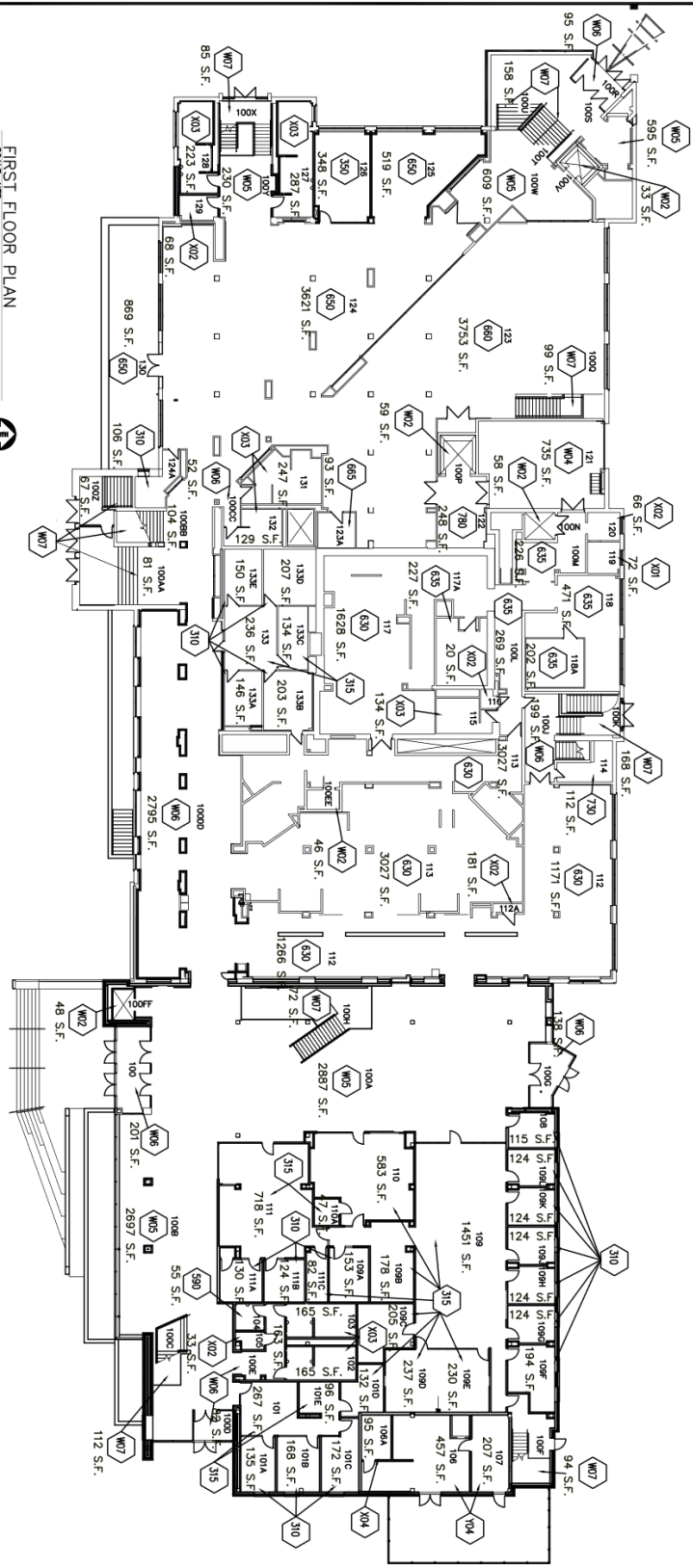
GENERAL NOTES:

**LEGEND**

210	Inventory Room
0940	Actual Room N.
097	Room Area (Sq
CSF	Gross Square Ft
NASF	Net Square Feet
	Room Use Code



OF SHEETS THIS DRAWING	SHEET NO. A-XX 2 of 5		Number (square Feet) :			Date: _____ Revision: _____
			GCR NO. RIDG. NO. SEE NOTES DRAWN BY XXX REVISION BY KTF DATE 12-14-16	<b>PITTSBURG STATE UNIVERSITY</b> <b>SOUTH RESIDENCE HALL COMPLEX</b> <b>FIRST FLOOR</b> 1701 S. BROADWAY      PITTSBURG, KS 66762		



FIRST FLOOR PLAN  
 SCALE: 1/8" = 1'-0"  
 0 10 20 30 40  
 GSF: 44,923 SF  
 NASF: 26,135 SF

GENERAL NOTES:

**LEGEND**

210 Inventory Room  
 000 Actual Room Sq  
 000 Room Area Sq  
 GSF Gross Square Footage  
 NASF Net Square Footage  
 Room Use Code

TOTAL BUILDING AREA  
 GSF 44,923 SF  
 NASF 26,135 SF



DATE	REVISION



**PITTSBURG STATE UNIVERSITY**  
**OVERMAN STUDENT CENTER**  
**FIRST FLOOR**

1701 S. BROADWAY      PITTSBURG, KS 66762

Number  
 (in feet)  
 1

CGR NO.

BUILD. No.  
 385-00-003

DRAWN BY  
 XXX

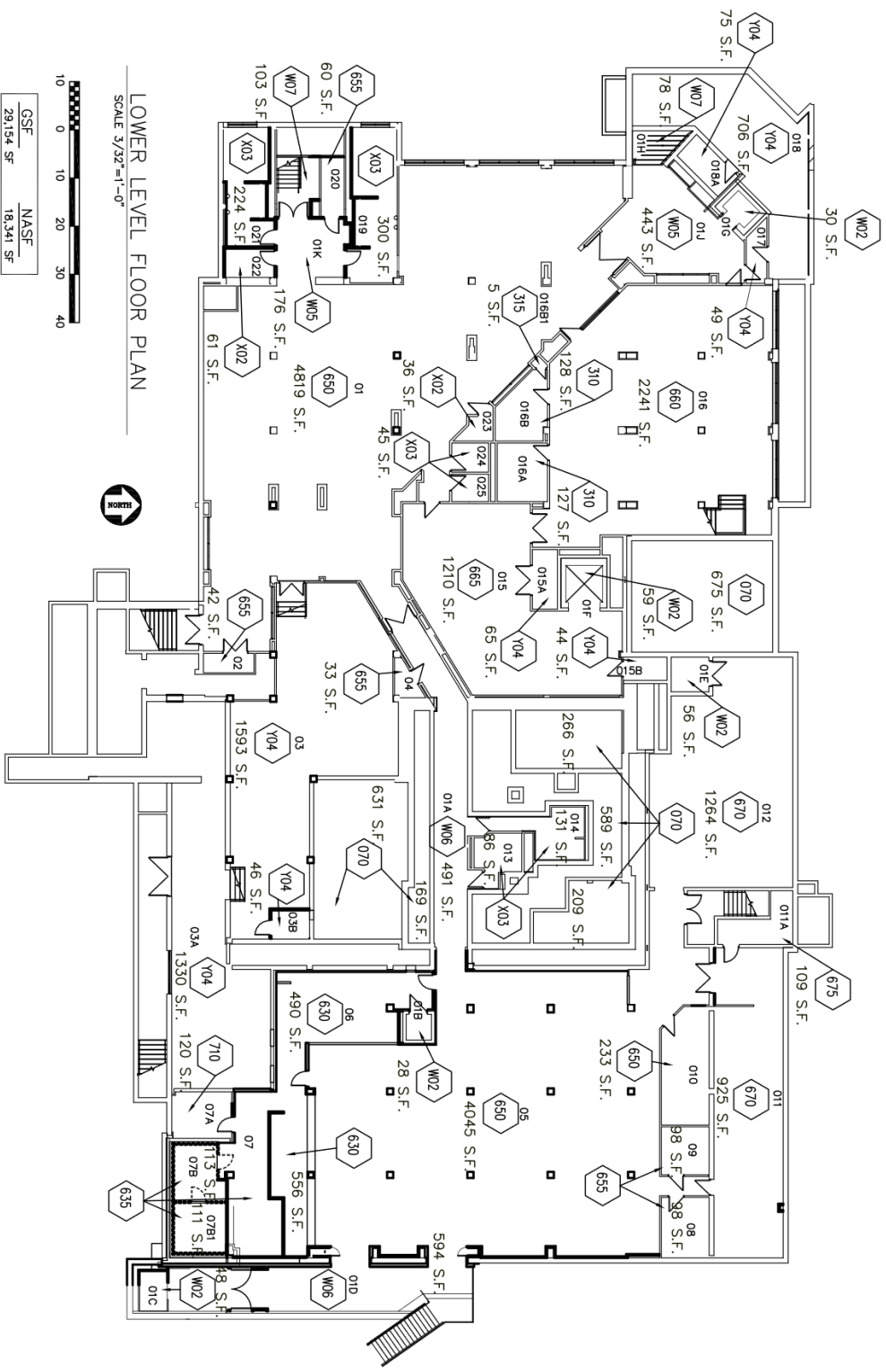
REVISION BY  
 AMS

DATE  
 2-5-16



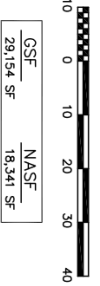
**OF**  
**SHEETS**  
**THIS**  
**DRAWING**

**SHEET NO.**  
**A-KK**  
 2 of 3



LOWER LEVEL FLOOR PLAN

SCALE 3/32"=1'-0"



GENERAL NOTES:



**LEGEND**

210	Inventory Room Number
640	Actual Room Number
67	Room Area (Square Feet)
GSF	Gross Square Feet
NASF	Net Square Feet
Room Use Code	

TOTAL BUILDING AREA  
GSF 291,154  
NASF 18,341



**OFFICE OF FACILITIES PLANNING**

	
<p align="center"><b>PITTSBURG STATE UNIVERSITY</b> OVERMAN STUDENT CENTER LOWER LEVEL</p> <p align="center">1701 S. BROADWAY      PITTSBURGH, KS 66762</p>	
CCR No. BLDG. No. DRAWN BY REVISION BY DATE	(Sheet of Feet)
385-00-003 XXX AMS 2-03-16	:A F OT
	
<p align="center"><b>SHEET NO.</b> <b>A-KK</b> 1 of 3</p>	