

Expand from existing plan for paving in all directions per page 2  
Revised path of travel for ADA on West side from diagonal to right angles  
Revised drainage on West and East sides



C 1.1 Grading Plan

Page 2 OH View

- Paving
- Concrete
- Path of Travel



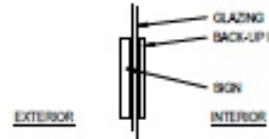
New Kitchen

Dining Hall



**GENERAL NOTES**

1. FOR SIGNAGE APPLICATION TO GLASS, PROVIDE A MATCHING BACK-UP PLATE & MOUNT TO INTERIOR SURFACE OF GLASS WITH ADHESIVE.



- VERIFY ALL SIGN TEXT WITH [DISTRICT] PRIOR TO ORDERING SIGNAGE.
- PROVIDE AN ADDITIONAL 10 BUILDING SIGNS WITH 40 CHARACTERS PER SIGN TO BE DETERMINED DURING CONSTRUCTION PER THE [DISTRICT]'S DIRECTION.

**ACCESSIBLE SIGNAGE**

1. THE INTERNATIONAL SYMBOL OF ACCESSIBILITY SHALL BE THE STANDARD USED TO IDENTIFY FACILITIES THAT ARE ACCESSIBLE TO AND USABLE BY PHYSICALLY DISABLED PERSONS AS SET FORTH AND AS SPECIFICALLY REQUIRED IN THESE NOTES. THE FOLLOWING ELEMENTS AND SPACES OF ACCESSIBLE FACILITIES SHALL BE IDENTIFIED BY THE INTERNATIONAL SYMBOL OF ACCESSIBILITY:

- ACCESSIBLE PARKING SPACES.
- ACCESSIBLE AREA OF REFUGE.
- ACCESSIBLE PASSENGER LOADING ZONES.
- ACCESSIBLE TOILET AND BATHING FACILITIES.
- ALL MAIN ENTRY DOORS.

- OTHER SIGNS:
  - IN ASSEMBLY AREAS, A SIGN NOTIFYING THE GENERAL PUBLIC OF THE AVAILABILITY OF ASSISTIVE LISTENING SYSTEMS SHALL BE PROVIDED AT TICKET OFFICES OR SIMILARLY PROMINENT LOCATIONS WHERE THERE IS NO TICKET OFFICE.
  - EACH DOOR TO AN EXIT SHALL HAVE A TACTILE SIGN INCLUDING RAISED LETTERS AND BRAILLE, STATING "EXIT" AND SHALL COMPLY WITH CALIFORNIA A117.1 AND CBC 11B-703.2.
  - AT EXITS AND ELEVATORS SERVING A REQUIRED ACCESSIBLE SPACE, BUT NOT PROVIDING AN APPROVED ACCESSIBLE MEANS OF EGRESS, SIGNS SHALL BE INSTALLED INDICATING THE LOCATION OF ACCESSIBLE MEANS OF EGRESS.

3. COLOR OF SYMBOL: THE SYMBOL SPECIFIED ABOVE SHALL CONSIST OF A WHITE FIGURE ON A BLUE BACKGROUND. THE BLUE SHALL BE EQUAL TO COLOR NO. 15050 IN FEDERAL STANDARD 595C.

4. BRAILLE SYMBOLS: CALIFORNIA CONTRACTED GRADE 2 BRAILLE SHALL BE USED WHEREVER BRAILLE SYMBOLS ARE SPECIFICALLY REQUIRED. DOTS SHALL BE 1/10 INCH ON CENTER IN EACH CELL WITH 2/10 INCH SPACE BETWEEN CELLS. DOTS SHALL BE RAISED 0.025 TO 0.037 (9/64 TO 1/8) INCH ABOVE THE BACKGROUND. CBC TABLE 11B-703.3.1. RECOMMENDED ROUNDED OR DOMED CALIFORNIA BRAILLE DOTS, EACH DISTINCT AND SEPARATE.



4. CHARACTER PROPORTION: CHARACTER PROPORTIONS LETTERS AND NUMBERS ON SIGNS SHALL BE SELECTED FROM FONTS WHERE THE WIDTH OF UPPERCASE LETTER "O" IS BETWEEN 80% AND 110% THE HEIGHT OF THE UPPERCASE LETTER "I", AND THE STROKE THICKNESS OF THE UPPERCASE LETTER "I" IS 10% TO 20% MAXIMUM OF THE HEIGHT OF THE CHARACTER. CBC SECTION 11B-703.5.4. CREATE A TEMPLATE TO TEST PROPORTIONS. PLACE THE TEMPLATES 1:1 SQUARE OVER THE X OF O, WHICHEVER IS NARROWER. IF THE CHARACTER IS NOT WIDER THAN THE 110% RECTANGLE, NOR NARROWER THAN THE 80% RECTANGLE, THE PROPORTIONS ARE CORRECT. USE THE 1:10 RECTANGLE TO DETERMINE IF THE STROKE OF THE I IS TOO BROAD, AND THE 1:20 RECTANGLE TO SEE IF IT IS TOO NARROW. IF ALL TESTS ARE PASSED, THE TYPESTYLE IS COMPLIANT WITH PROPORTION CODE. LOWER CASE CHARACTERS ARE PERMITTED.



5. VISUAL CHARACTER HEIGHT - CHARACTERS AND NUMBERS ON SIGNS SHALL BE SIZED ACCORDING TO THE VIEWING DISTANCE FROM WHICH THEY ARE TO BE READ, PER TABLE 11B-703.5.5 (REPRODUCED BELOW). THE HEIGHT IS MEASURED USING AN UPPERCASE "T". LOWERCASE CHARACTERS ARE PERMITTED.

TABLE 11B-703.5.5 VISUAL CHARACTER HEIGHT

HEIGHT TO FINISH FLOOR OR GROUND FROM BASELINE OF CHARACTER	HORIZONTAL VIEWING DISTANCE	MINIMUM CHARACTER HEIGHT
40 INCHES TO 72 INCHES	LESS THAN 72 INCHES	5/8 INCH
	72 INCHES AND GREATER	5/8 INCH, PLUS 1/8 INCH PER FOOT OF VIEWING DISTANCE ABOVE 72 INCHES
GREATER THAN 72 INCHES TO 120 INCHES	LESS THAN 180 INCHES	2 INCHES
	180 INCHES AND GREATER	2 INCHES, PLUS 1/8 INCH PER FOOT OF VIEWING DISTANCE ABOVE 180 INCHES
GREATER THAN 120 INCHES	LESS THAN 21 FEET	3 INCHES
	21 FEET AND GREATER	3 INCHES, PLUS 1/8 INCH PER FOOT OF VIEWING DISTANCE ABOVE 21 FEET

6. FINISH AND CONTRAST OF SYMBOL: CHARACTERS AND SYMBOLS SHALL CONTRAST WITH THEIR BACKGROUND, EITHER LIGHT CHARACTERS ON A DARK BACKGROUND OR DARK CHARACTER ON A LIGHT BACKGROUND. CBC 11B-703.5.1

7. RAISED CHARACTERS AND PICTORIAL SYMBOL SIGNS: WHEN RAISED CHARACTERS OR SYMBOLS ARE USED, THEY SHALL CONFORM TO THE FOLLOWING:

- TYPE: LETTER TYPE: LETTERS AND NUMBERS ON SIGNS SHALL BE RAISED 1/32 INCH MINIMUM AND SHALL BE SANS SERIF UPPERCASE CHARACTERS ACCOMPANIED BY CALIFORNIA CONTRACTED GRADE 2 BRAILLE. CBC SECTION 11B-703.2 (SEE NOTE 3).
- SIZE: RAISED CHARACTERS OR SYMBOLS SHALL BE A MINIMUM OF 5/8" HIGH AND A MAXIMUM OF 2" HIGH.
- PICTORIAL SYMBOL SIGN (PICTOGRAMS): PICTORIAL SYMBOL SIGN (PICTOGRAMS) SHALL BE ACCOMPANIED BY THE EQUIVALENT VERBAL DESCRIPTION PLACED DIRECTLY BELOW THE PICTOGRAM. THE FIELD OF THE PICTOGRAM SHALL BE A MINIMUM OF 8 INCHES IN HEIGHT. PICTOGRAMS SHALL HAVE A NON-GLARE FINISH AND SHALL CONTRAST WITH THEIR FIELD. SPACING: CHARACTER SPACING SHALL BE 1/16 INCH MINIMUM AND 4 TIMES THE STROKE WIDTH MAXIMUM AT THE BASE, AND 1/8" MINIMUM AND 4 TIMES THE STROKE WIDTH MAXIMUM AT THE TOP. LINED SPACING SHALL BE 135% TO 170% OF THE RAISED CHARACTER HEIGHT. CBC 11B-703.2.

8. ENTRANCE SIGNS: ALL BUILDING ENTRANCES THAT ARE ACCESSIBLE TO AND USABLE BY PERSONS WITH DISABILITIES SHALL BE IDENTIFIED WITH AT LEAST ONE STANDARD SIGN AND WITH ADDITIONAL DIRECTIONAL SIGNS, WHEN ACCESSIBLE ROUTE DIVERGES FROM THE REGULAR CIRCULATION PATH. SIGNS SHALL BE VISIBLE TO PERSONS ALONG APPROACHING PEDESTRIAN WAYS.

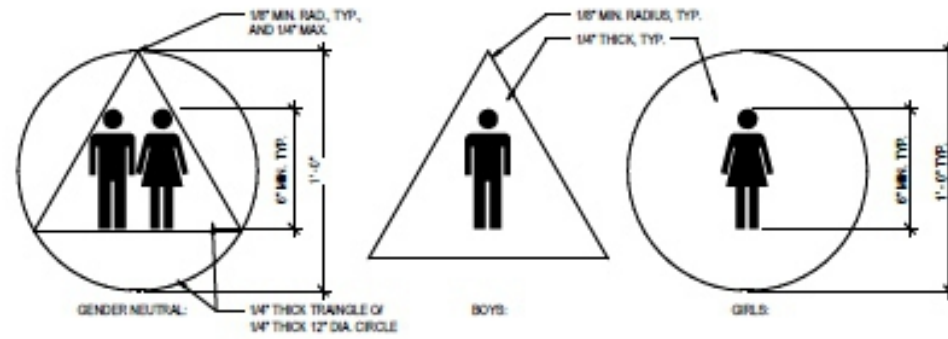
9. INFORMATION POSTED: BUILDINGS THAT HAVE BEEN REMODELED TO PROVIDE SPECIFIC SANITARY FACILITIES AND/OR ELEVATORS FOR PUBLIC USE THAT CONFORM TO THESE BUILDING STANDARDS SHALL HAVE THIS INFORMATION POSTED IN THE BUILDING LOBBY, PREFERABLY AS PART OF THE BUILDING DIRECTORY.

10. MOUNTING LOCATION AND HEIGHT FOR TACTILE SIGNAGE: WHERE DIRECTION OR IDENTIFICATION SIGNS ARE PROVIDED FOR INTERIOR OR EXTERIOR ROOMS, SPACES, OR FACILITIES, RAISED LETTERS SHALL ALSO BE PROVIDED AND SHALL BE ACCOMPANIED BY BRAILLE. CBC SECTION 11B-215.2. WHERE A TACTILE SIGN IS PROVIDED AT A DOOR, THE SIGN SHALL BE LOCATED ALONGSIDE THE DOOR AT THE LATCH SIDE. WHERE A TACTILE SIGN IS PROVIDED AT DOUBLE DOORS WITH TWO ACTIVE LEAFS, THE SIGN SHALL BE LOCATED TO THE RIGHT OF THE RIGHT HAND DOOR. WHERE THERE IS NO WALL SPACE ON THE LATCH SIDE OF A SINGLE DOOR OR THE RIGHT SIDE OF DOUBLE DOORS, SIGNS SHALL BE LOCATED ON THE NEAREST ADJACENT WALL. EXIT SIGNAGE SHALL BE LOCATED ON THE APPROACH SIDE OF THE DOOR AS ONE EXITS THE SPACE. MOUNTING HEIGHT SHALL BE 80 INCHES MAXIMUM ABOVE THE FINISH FLOOR TO THE BASELINE OF THE HIGHEST LINE OF RAISED CHARACTERS AND 48" MINIMUM ABOVE FINISHED FLOOR TO THE BASELINE OF THE LOWEST BRAILLE CELLS. MOUNTING LOCATION SHALL BE DETERMINED SO THAT AN 18" X 18" CLEAR SPACE IS PROVIDED CENTERED ON THE TACTILE CHARACTERS AND BEYOND ANY DOOR SWING. CBC SECTION 11B-703.4.

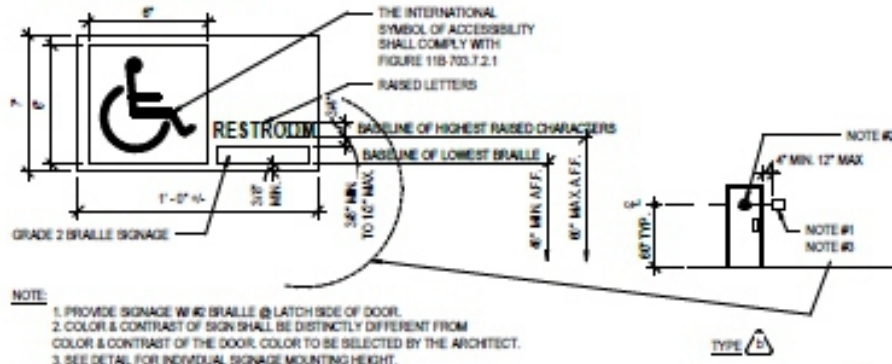
11. ALL SIGNS (AT MAIN ENTRANCES, TOILETS, PERMANENT ROOMS AND ASSISTIVE LISTENING SYSTEMS), ETC.] SHALL COMPLY WITH TITLE 24, INCLUDING SECTION 11B-703.



SIGNAGE - TYPE a 3' = 1'-0" 1

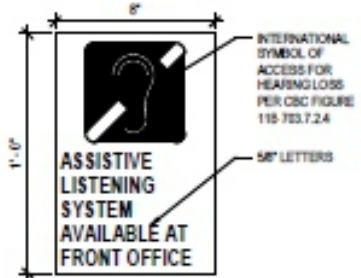


NOTE #1: MOUNT ON DOOR, SEE MOUNTING INSTRUCTION  
NOTE #2: COLOR OF TRIANGLE SHALL CONTRAST WITH THE COLOR OF THE CIRCLE. SIGN COLOR SHALL CONTRAST WITH DOOR COLOR. COLORS TO BE SELECTED BY THE ARCHITECTS.



NOTE: 1. PROVIDE SIGNAGE WITH BRAILLE @ LATCH SIDE OF DOOR.  
2. COLOR & CONTRAST OF SIGN SHALL BE DISTINCTLY DIFFERENT FROM COLOR & CONTRAST OF THE DOOR. COLOR TO BE SELECTED BY THE ARCHITECT.  
3. SEE DETAIL FOR INDIVIDUAL SIGNAGE MOUNTING HEIGHT.

SIGNAGE - TYPE c 3' = 1'-0" 8



NOTE: VERIFY SIGN TEXT PRIOR TO FABRICATION.

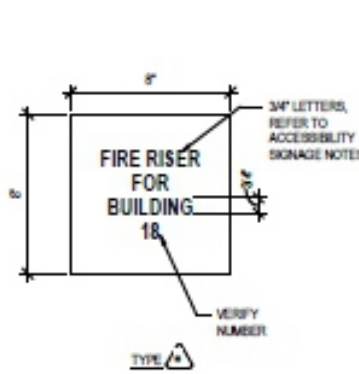
SIGNAGE - TYPE d 3' = 1'-0" 13



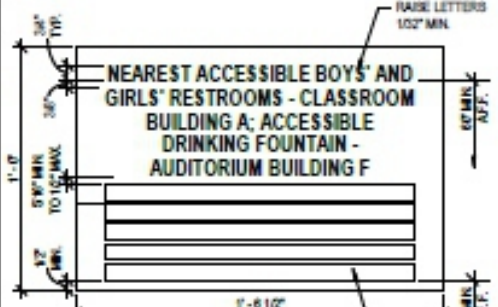
NOTE: 1. ARROW WHERE OCCURS, ROTATE ARROW AS REQ'D TO DIRECT TO ACCESSIBLE ENTRY

SIGNAGE - TYPE I 3' = 1'-0" 3

SIGNAGE - TYPE b 3' = 1'-0" 10



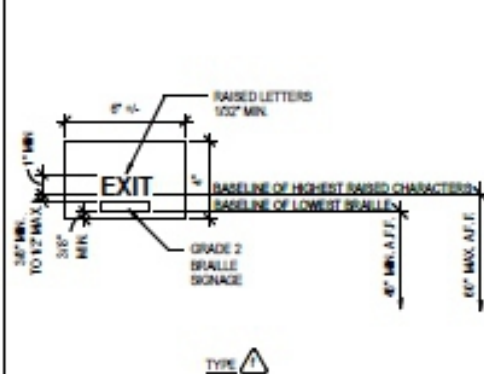
SIGNAGE - TYPE e 3' = 1'-0" 14



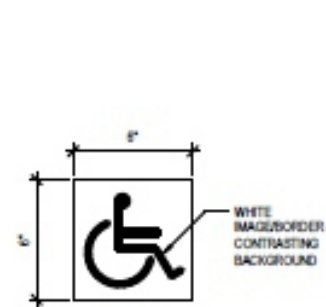
NOTE: VERIFY SIGN TEXT PRIOR TO FABRICATION.

SIGNAGE - TYPE H 3' = 1'-0" 2

SIGNAGE - TYPE f 3' = 1'-0" 15



SIGNAGE - TYPE g 3' = 1'-0" 20



ACCESSIBILITY SIGNAGE REQUIREMENTS 3' = 1'-0" 17

IDENTIFICATION STAMP  
DIV. OF THE STATE ARCHITECT  
APP. 03-119630 INC.  
REVISED FOR  
DATE: 7/11/2019

Roelwing Nakamura  
Terada Architects  
285 N Van Ness Ave # 102  
SAN FRANCISCO, CALIFORNIA  
P. 415.434.4330  
F. 415.434.4330  
www.RNTArchitect.com



DINING HALL AND KITCHEN (BLDG B) AT MATILJA JUNIOR HIGH SCHOOL

CONSTRUCTION DOCUMENTS

Revision No.	Description	Date

TYPICAL SIGNAGE DETAILS

Rev#	17750-04
Date	02/04/2019
Drawn by	JR
Checked by	TB
Sheet Number	