

1 INTEGRATED SECURITY SYSTEMS FLOOR PLAN  
X1.01 SCALE: 1/8"=1'-0"

**New Jail and Existing Prison Renovation PACKAGE**

COPYRIGHT & REPRODUCTION OF THIS DRAWING IS THE PROPERTY OF HGBD, INTERNATIONAL AND IS NOT TO BE REPRODUCED OR COPIED IN WHOLE OR IN PART. IT IS NOT TO BE USED ON ANY OTHER PROJECT. DO NOT SCALE DIMENSIONS FROM PRINTS. PLANS AND DETAILS ARE NOT ALWAYS DRAWN TO SCALE. USE DIMENSIONS GIVEN OR CONSULT THE ARCHITECT FOR FURTHER CLARIFICATION.

<b>X1.01</b>	<b>DRAWING NUMBER</b>	DESIGNED	DRAWN	CHECKED
		7/77	7/77	7/77
		DATE: February 4, 2013		
		JOB NO. 211 9100 05		
SCALE: AS SHOWN		REVISIONS:		

**PHASE I**

**Effingham County Sheriff's Office and Jail**  
Effingham County, Georgia

**FIRST FLOOR PLAN WEST HOUSING**



**HUSSEY, GAY, BELL & DEYOUNG INC.**  
ARCHITECTS and ENGINEERS

POST OFFICE BOX 14247  
SAVANNAH, GEORGIA  
31416-1247

329 COMMERCIAL DRIVE  
OFFICE (912) 354-4626  
TELEFAX (912) 352-1692

www.hgbd.com

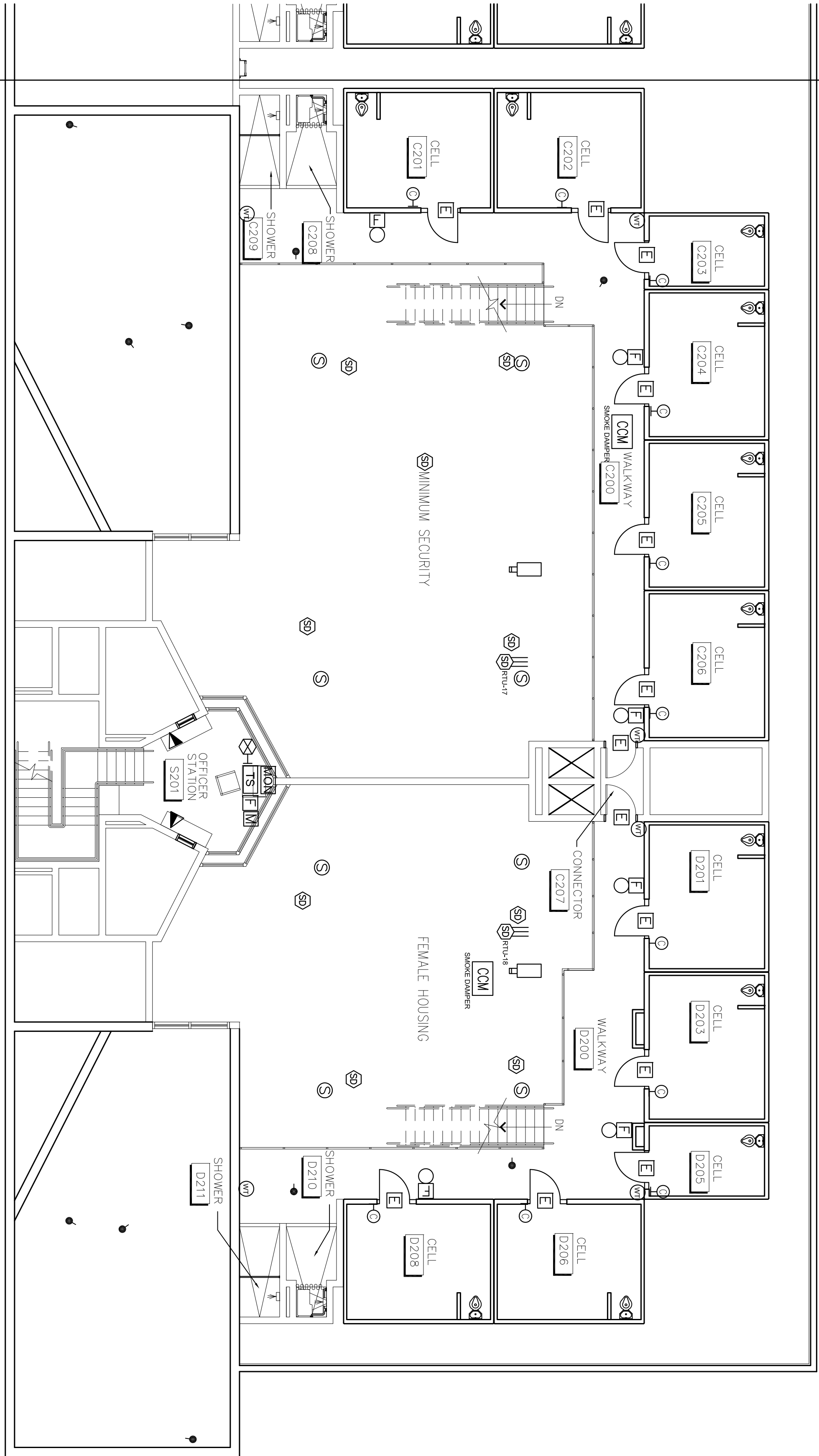
**ROSSER**

Professional Registration No. 12553  
12553 VICTORIAN BLVD. NE  
DUBLIN, GA 31006  
(404) 486-3800

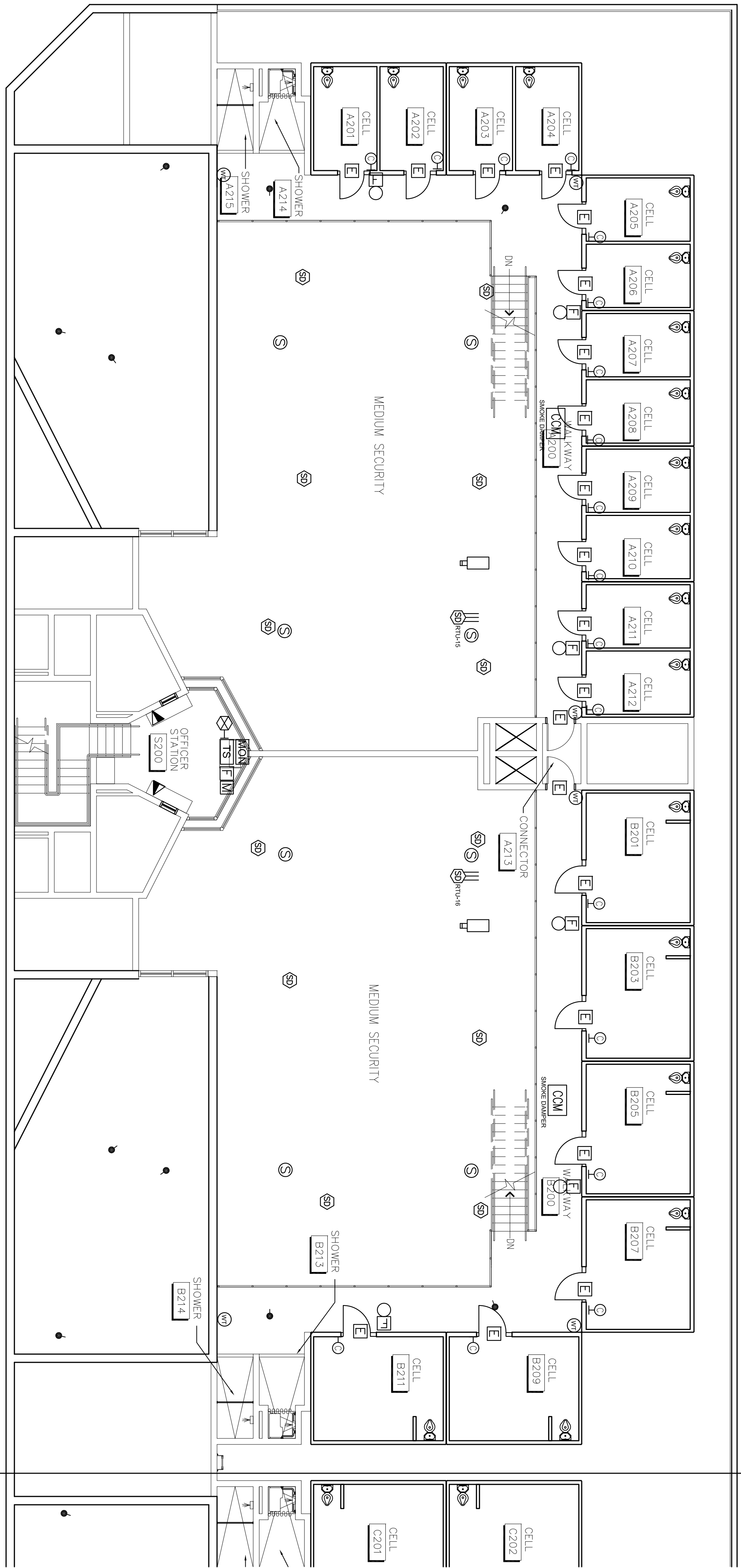


X1.02  
X1.02  
MATCH LINE

X1.02  
INTEGRATED SECURITY SYSTEMS FLOOR PLAN  
SCALE: 1/8"=1'-0"



X1.02  
X1.02  
MATCH LINE



### New Jail and Existing Prison Renovation PACKAGE

COPYRIGHT & REPRODUCTION OF DRAWINGS This Drawing is the property of H.G.B.D., INTERNATIONAL and is not to be reproduced or copied in whole or in part. It is not to be used on any other project. Do not scale dimensions from prints. Plans and details are not always drawn to scale. Use dimensions given or consult the Architect for further clarification.

X1.02

DRAWING NUMBER

SCALE: AS NOTED

JOB NO. 211 9100 05

DATE: February 4, 2013

DESIGNED BY: 777

DRAWN BY: 777

CHECKED BY: 777

REVISIONS:

PHASE I

Effingham County Sheriff's Office and Jail  
Effingham County, Georgia

MEZZANINE FLOOR PLAN HOUSING



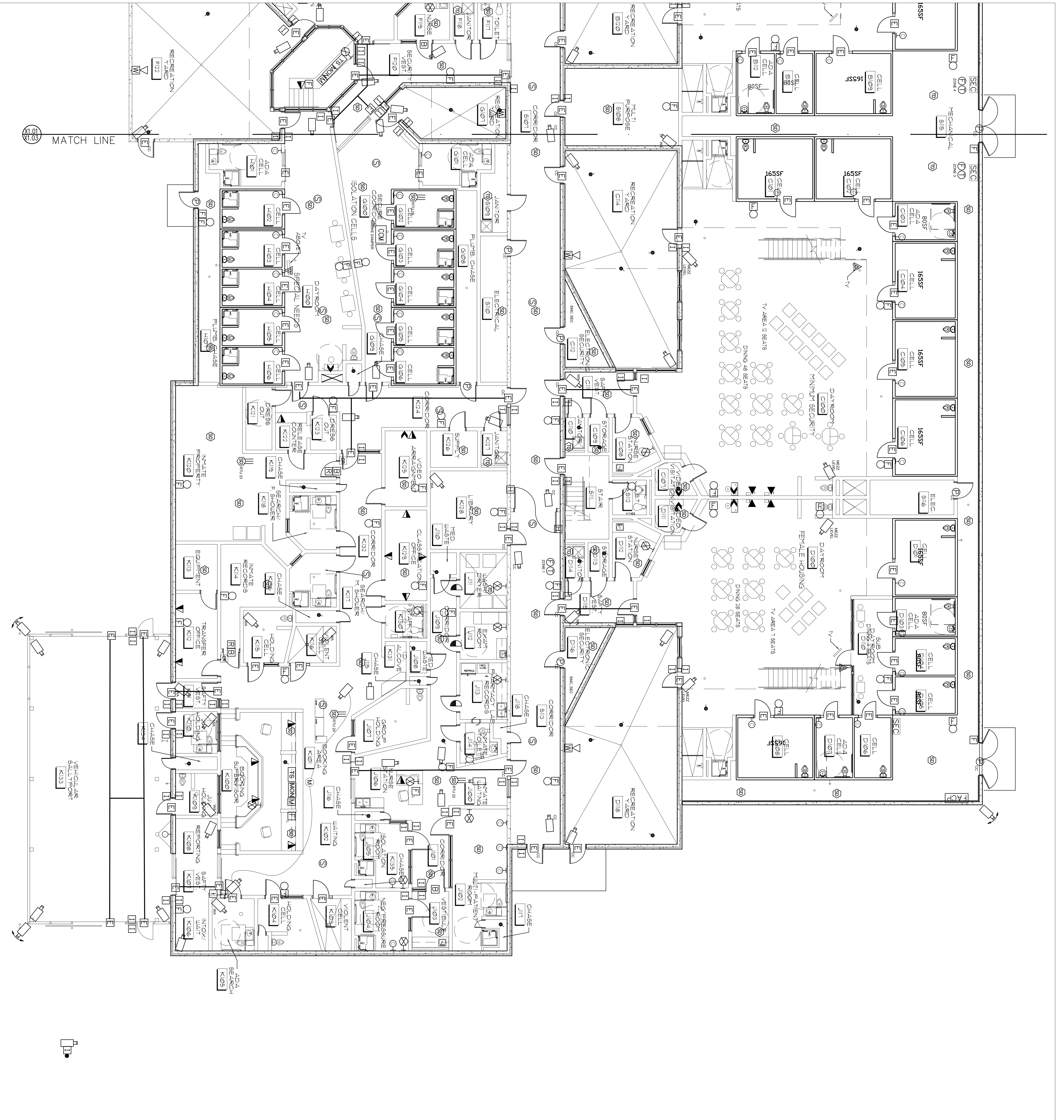
HUSSEY, GAY, BELL & DEYOUNG INC.  
ARCHITECTS and ENGINEERS

POST OFFICE BOX 14247  
SAVANNAH, GEORGIA  
31416-1247

www.hgbd.com

329 COMMERCIAL DRIVE  
OFFICE (912) 354-4626  
TELEFAX (912) 352-1692





INTEGRATED SECURITY SYSTEMS FLOOR PLAN  
 X1.03 SCALE: 1/8"=1'-0"

COPYRIGHT & REPRODUCTION This Drawing is the property of H&B.D. INTERNATIONAL and is not to be reproduced or copied in whole or in part. It is not to be used on any other project. Do not scale dimensions from prints. Plans and details are not always drawn to scale. Use dimensions given or consult the Architect for further clarification.

X1.03

DRAWING NUMBER

SCALE:

JOB NO. 211 9100 05

DATE: September 05, 2012

DESIGNED: SHAW 777

REVISIONS:

777

777

Effingham County  
 Sheriff's Office and Jail  
 Effingham County, Georgia

FIRST FLOOR PLAN EAST HOUSING



HUSSEY, GAY, BELL & DEYOUNG INC.  
 ARCHITECTS and ENGINEERS

POST OFFICE BOX 14247  
 SAVANNAH, GEORGIA  
 31416-1247

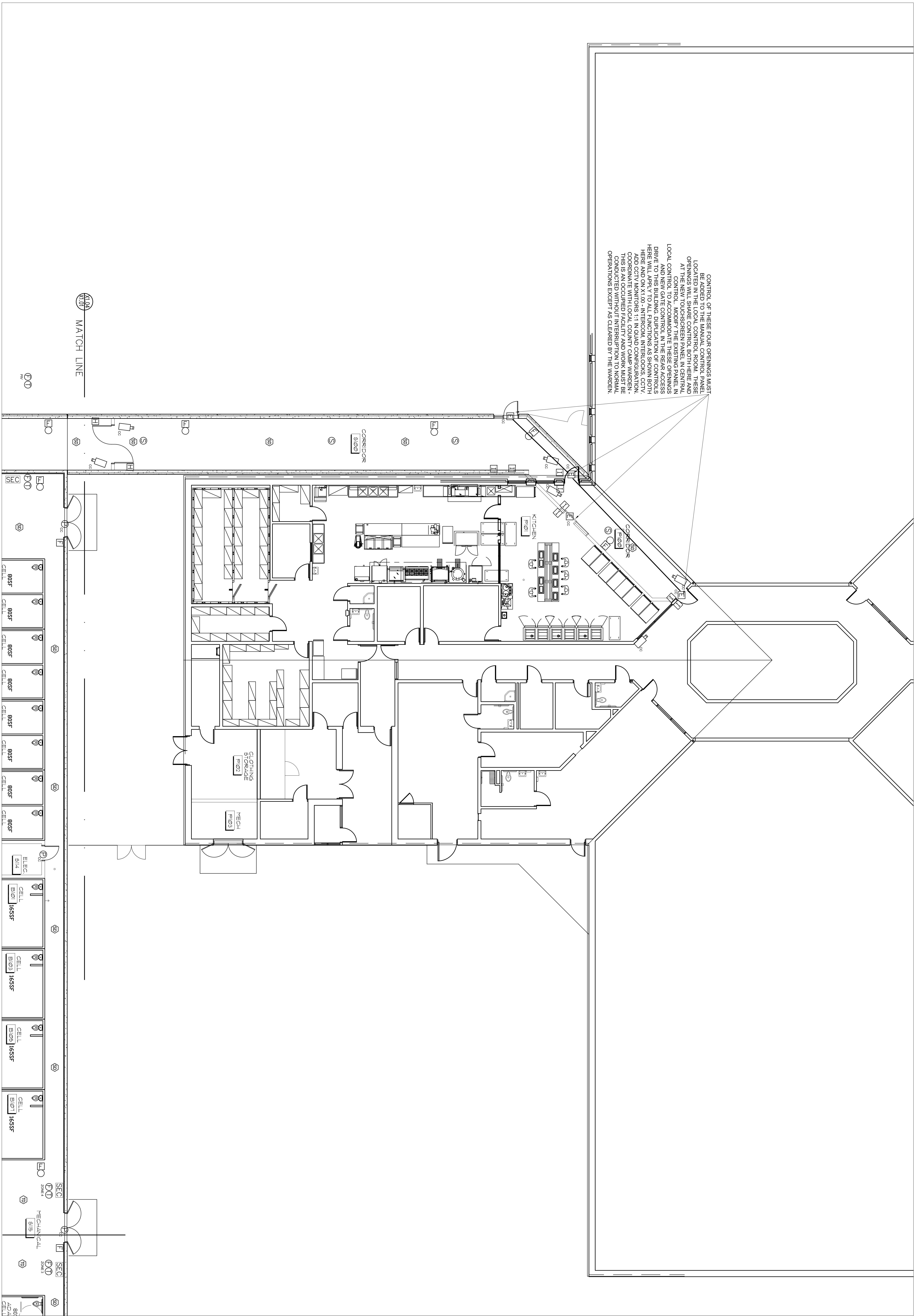
www.hgbd.com

329 COMMERCIAL DRIVE  
 OFFICE (912) 354-4626  
 TELEFAX (912) 352-1692

ROSSER  
 REGISTERED PROFESSIONAL ENGINEER  
 LICENSE NO. 32000  
 EXPIRES 12/31/2012



CONTROL OF THESE FOUR OPENINGS MUST BE ADDED TO THE MANUAL CONTROL PANEL LOCATED IN THE LOCAL CONTROL ROOM. THESE OPENINGS WILL SHARE CONTROL WITH THESE AND OTHER OPENINGS IN THE LOCAL CONTROL ROOM. AT LOCAL CONTROL, MODIFY THE EXISTING PANEL IN LOCAL CONTROL TO ACCOMMODATE THESE OPENINGS AND NEW GATE CONTROL IN THE REAR ACCESS PRIME AND NEW GATE CONTROL IN THE REAR ACCESS HERE WILL APPLY TO ALL FUNCTIONS AS SHOWN BOTH HERE AND ON X1.00 - INTERCOM, INTERLOCKS, CCTV, ADD CCTV MONITORS 1:1 IN QUAD CONFIGURATION. THIS IS AN EMERGENCY SITUATION AND WORKSHOPS WILL BE CONDUCTED WITHOUT INTERRUPTION TO NORMAL OPERATIONS EXCEPT AS CLEARED BY THE WARDEN.



MATCH LINE

1 INTEGRATED SECURITY SYSTEMS FLOOR PLAN  
X1.04 SCALE: 1/8"=1'-0"

COPYRIGHT & REPRODUCTION OF DRAWINGS: This Drawing is the property of H&B, INTERNATIONAL and is not to be reproduced or copied in whole or in part. It is not to be used on any other project. Do not scale dimensions from prints. Plans and details are not always drawn to scale. Use dimensions given or consult the Architect for further clarification.

X1.04

DRAWING NUMBER

SCALE:

JOB NO. 211 9100 05

DATE: September 05, 2012

DESIGNED BY: SHAW 772

CHECKED BY: CHICAGO 772

REVISIONS:

Effingham County  
Sheriff's Office and Jail  
Effingham County, Georgia

FIRST FLOOR PLAN NORTH CORRIDOR



HUSSEY, GAY, BELL & DEYOUNG INC.  
ARCHITECTS and ENGINEERS

POST OFFICE BOX 14247  
SAVANNAH, GEORGIA  
31416-1247

www.hgbd.com

329 COMMERCIAL DRIVE  
OFFICE (912) 354-4626  
TELEFAX (912) 352-1692

ROSSER  
REGISTERED PROFESSIONAL ARCHITECT  
STATE OF GEORGIA  
NO. 10000

