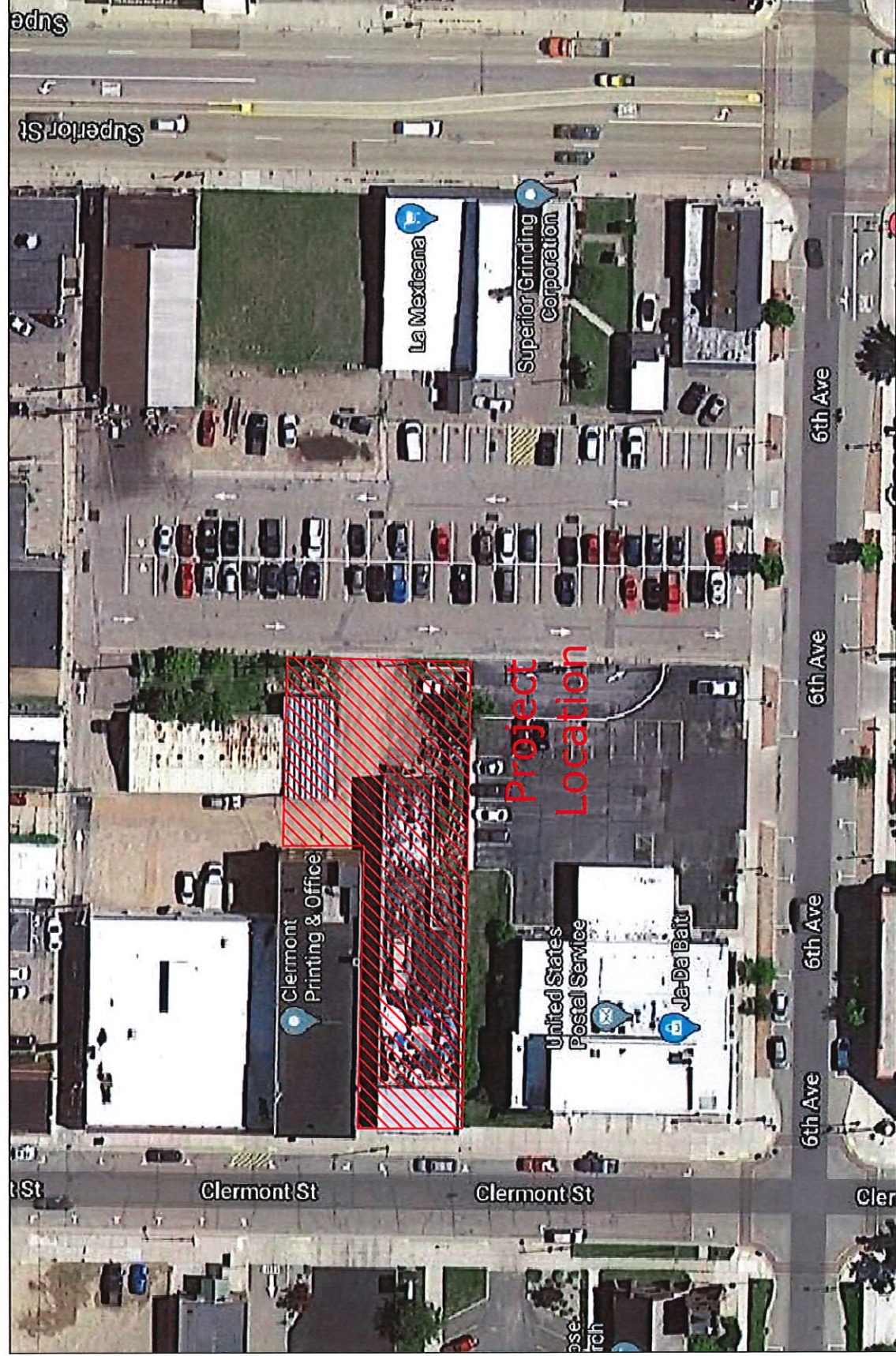


City of Antigo Post Office Parking Lot Expansion



Utility Contacts

City Gas
602 5th Ave
Antigo WI 54409
715-627-4351

Wisconsin Public
Service
PO Box 1166
Wausau WI 54401
715-627-3011
Don Lutzow

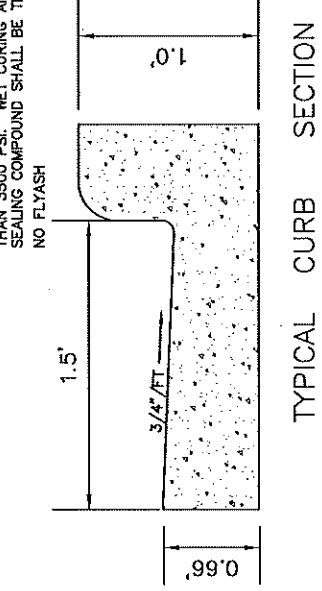
Frontier
2689 N.
Clermont St
Antigo WI 54409
608-346-0667
Craig Banczak

City of Antigo
700 Edison St
Antigo WI 54409
715-623-3633
Charley
Brinkmeier

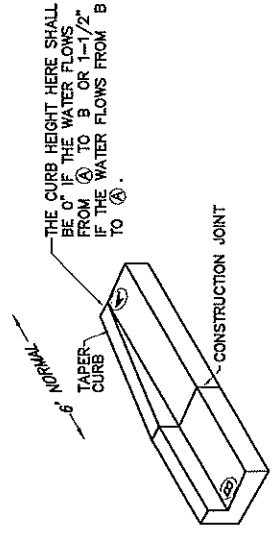
Charter
Communications
PO Box 1818
Wausau WI 54402
715-842-3910
Ken Zalewski



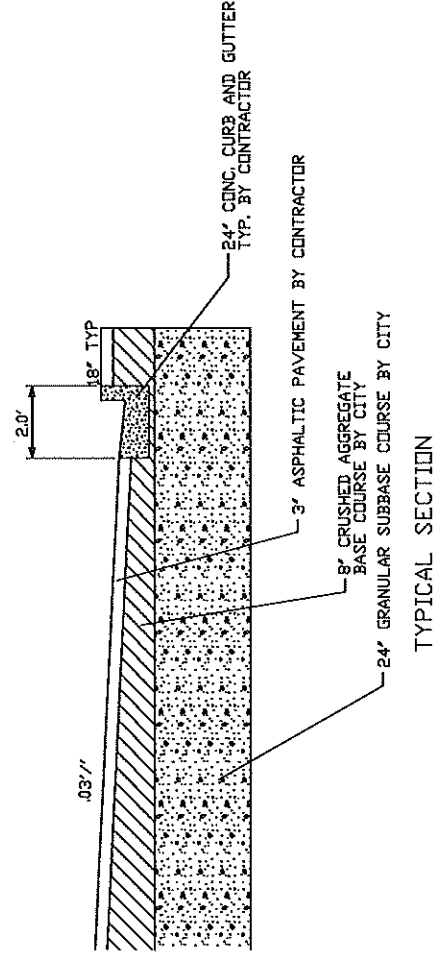
CONCRETE SHALL BE 6.0 BAG AIR
ENTRAINED FIDMIX, W/ 28 DAY
COMPRESSIVE STRENGTH OF NOT LESS
THAN 3500 P.S.I. WE CURING AND
SEALING COMPOUND SHALL BE TK 290.
NO FLYASH



TYPICAL CURB SECTION

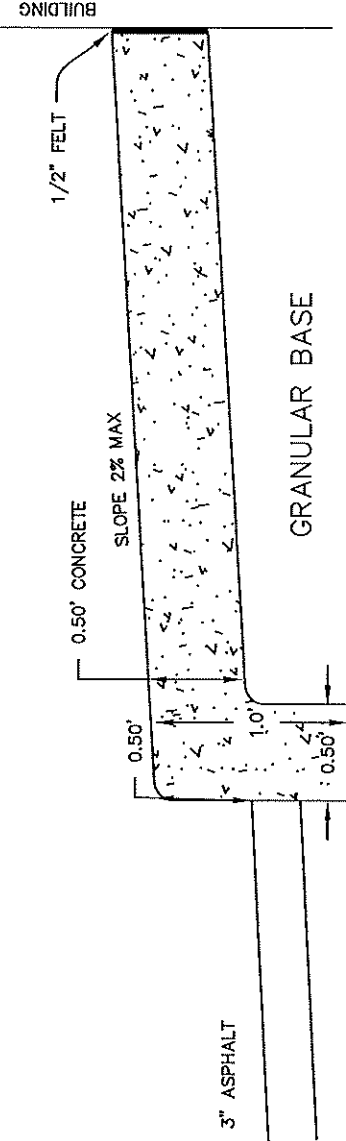


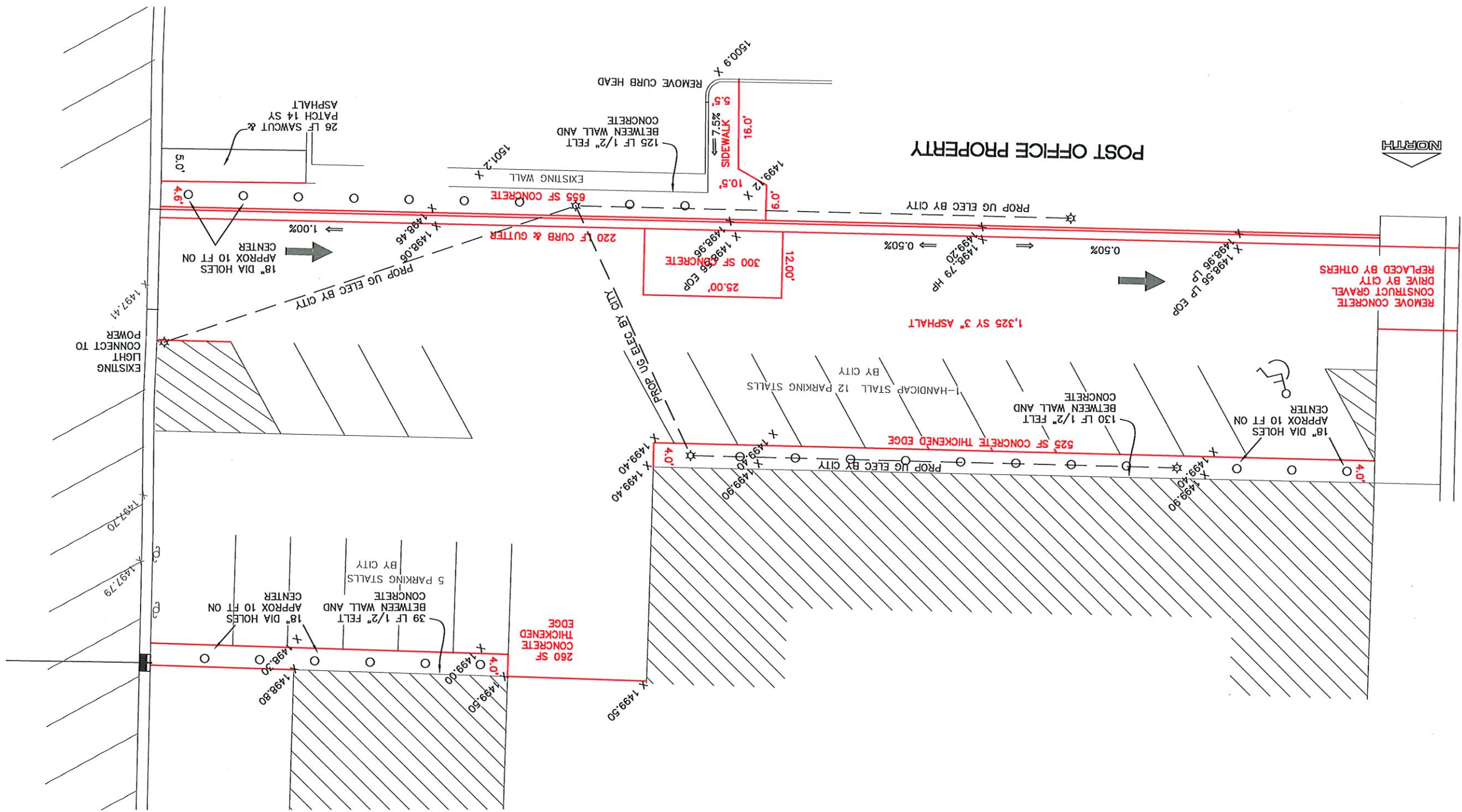
STANDARD CURB & GUTTER TERMINI



TYPICAL SECTION

THICKENED EDGE CONCRETE DETAIL





CLEMONT ST

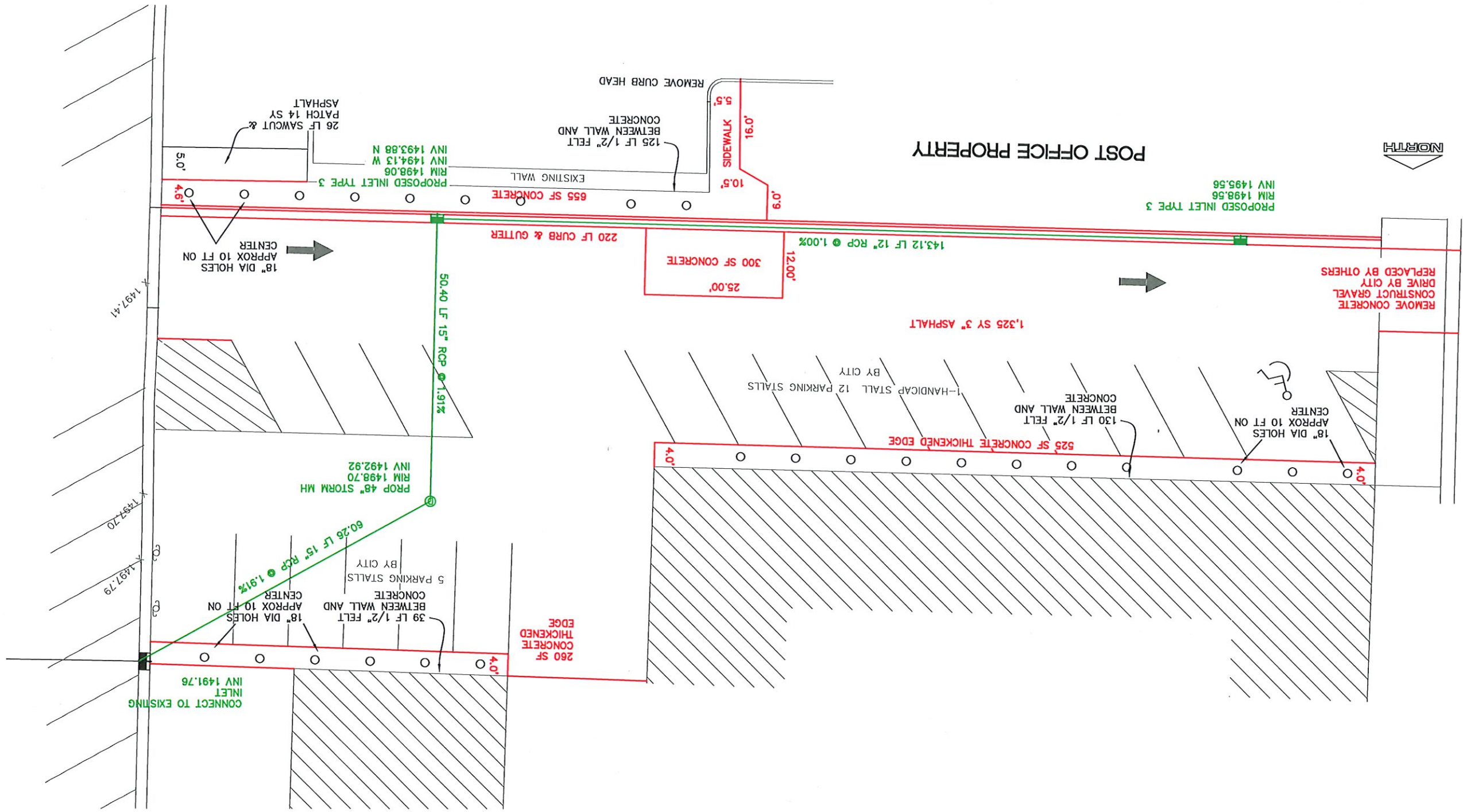
SCALE 1" = 20'

DATE: 3/15/2020

REVISION DATE:

City of Antigo
Post Office Parking Lot

SHEET
3
OF 4 SHEETS



CLERMONT ST



DATE: 3/15/2020	SCALE 1" = 20'
REVISION DATE:	

City of Antigo
Post Office Parking Lot

SHEET
4
OF 4 SHEETS