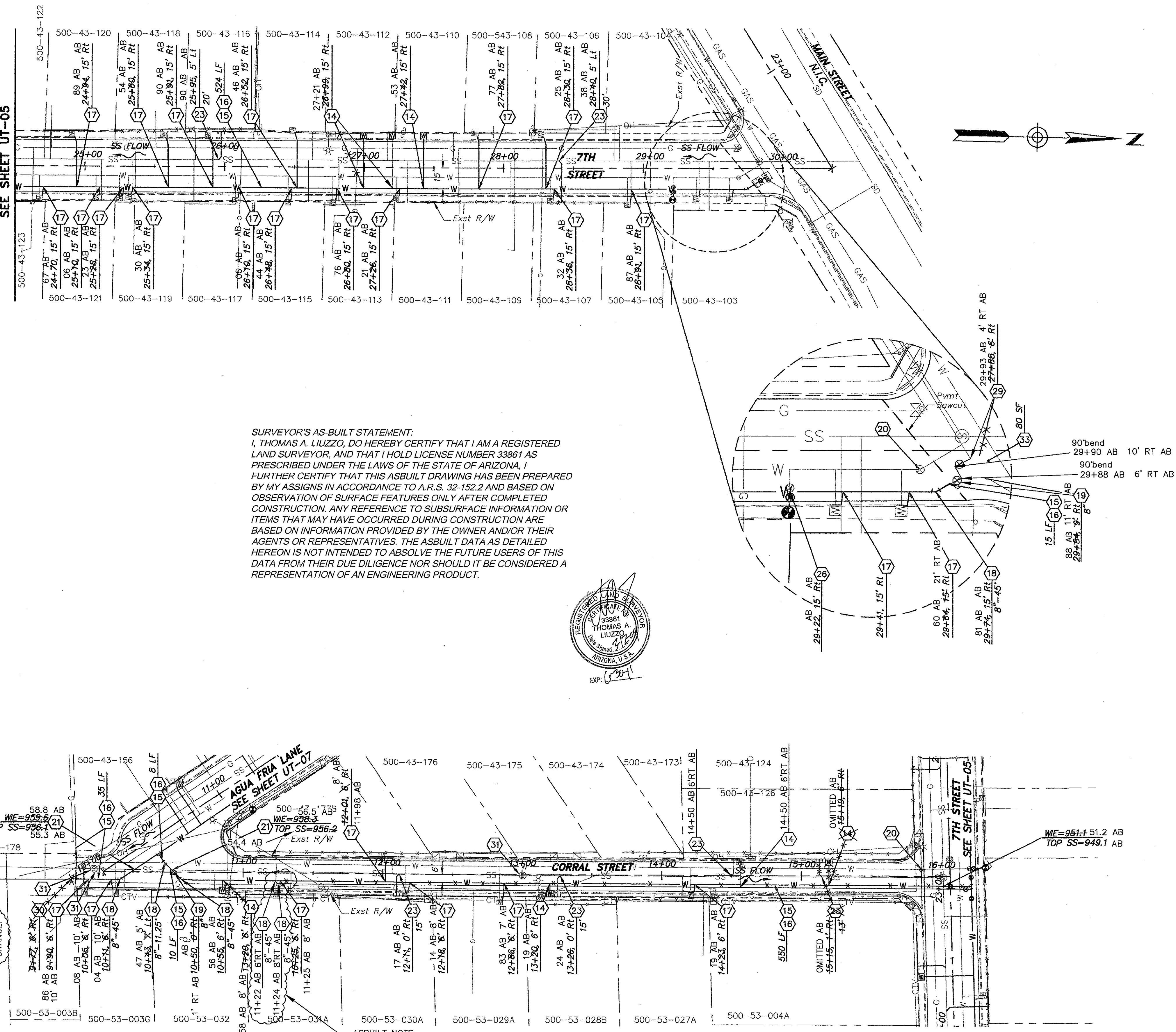
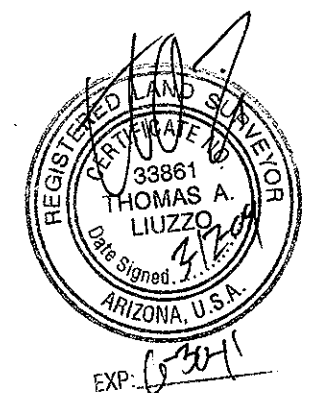


\\WEVPC01\Project\181323002-A\Arch\Site\181323002\UT05.dwg, Feb. 05, 2008, lison.merkham
 XREFS: X1232002AE01, X1232002AE02, X1232002AE03, X1232002AE04, X1232002AE05, X1232002AE06, X1232002AE07, X1232002AE08, X1232002AE09, X1232002AE10, X1232002AE11, X1232002AE12, X1232002AE13, X1232002AE14, X1232002AE15, X1232002AE16, X1232002AE17, X1232002AE18, X1232002AE19, X1232002AE20, X1232002AE21, X1232002AE22, X1232002AE23, X1232002AE24, X1232002AE25, X1232002AE26, X1232002AE27, X1232002AE28, X1232002AE29, X1232002AE30, X1232002AE31, X1232002AE32, X1232002AE33, X1232002AE34, X1232002AE35, X1232002AE36, X1232002AE37, X1232002AE38, X1232002AE39, X1232002AE40, X1232002AE41, X1232002AE42, X1232002AE43, X1232002AE44, X1232002AE45, X1232002AE46, X1232002AE47, X1232002AE48, X1232002AE49, X1232002AE50, X1232002AE51, X1232002AE52, X1232002AE53, X1232002AE54, X1232002AE55, X1232002AE56, X1232002AE57, X1232002AE58, X1232002AE59, X1232002AE60, X1232002AE61, X1232002AE62, X1232002AE63, X1232002AE64, X1232002AE65, X1232002AE66, X1232002AE67, X1232002AE68, X1232002AE69, X1232002AE70, X1232002AE71, X1232002AE72, X1232002AE73, X1232002AE74, X1232002AE75, X1232002AE76, X1232002AE77, X1232002AE78, X1232002AE79, X1232002AE80, X1232002AE81, X1232002AE82, X1232002AE83, X1232002AE84, X1232002AE85, X1232002AE86, X1232002AE87, X1232002AE88, X1232002AE89, X1232002AE90, X1232002AE91, X1232002AE92, X1232002AE93, X1232002AE94, X1232002AE95, X1232002AE96, X1232002AE97, X1232002AE98, X1232002AE99, X1232002AE100

MATCHLINE STA 24+50
SEE SHEET UT-05

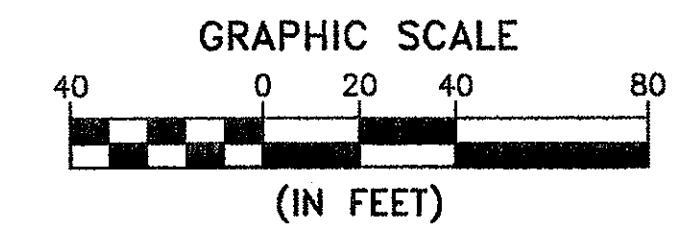


SURVEYOR'S AS-BUILT STATEMENT:
 I, THOMAS A. LIUZZO, DO HEREBY CERTIFY THAT I AM A REGISTERED LAND SURVEYOR, AND THAT I HOLD LICENSE NUMBER 33861 AS PRESCRIBED UNDER THE LAWS OF THE STATE OF ARIZONA. I FURTHER CERTIFY THAT THIS ASBUILT DRAWING HAS BEEN PREPARED BY MY ASSIGNS IN ACCORDANCE TO A.R.S. 32-152.2 AND BASED ON OBSERVATION OF SURFACE FEATURES ONLY AFTER COMPLETED CONSTRUCTION. ANY REFERENCE TO SUBSURFACE INFORMATION OR ITEMS THAT MAY HAVE OCCURRED DURING CONSTRUCTION ARE BASED ON INFORMATION PROVIDED BY THE OWNER AND/OR THEIR AGENTS OR REPRESENTATIVES. THE ASBUILT DATA AS DETAILED HEREON IS NOT INTENDED TO ABSOLVE THE FUTURE USERS OF THIS DATA FROM THEIR DUE DILIGENCE NOR SHOULD IT BE CONSIDERED A REPRESENTATION OF AN ENGINEERING PRODUCT.



AS-BUILT NOTE:
FIELD REVISION MOVES WATERLINE FROM 6' RT TO 8' RT OFF CENTERLINE

* NOTE: Location of existing sewer service line unknown, contractor to locate and verify location before construction.



CONSTRUCTION NOTES

- | DESCRIPTION | QUANTITY |
|---|----------------------------|
| 14 Install New 1" Water Service Connection to New 8" Water Line as Per COA Detail. Install Meter Box W/ Cover and Cap End within ROW Next to Property Line. Do Not Install Meter. | 5 EA |
| 15 Install 8" Ductile Iron Pipe (D.I.P.) Class 350 Water Polyethylene Wrapped Per MAG 610 - 5' Min. Depth. Restrain Per MAG Std Dtl 303. | 1142 LF |
| 16 Contractor to Install Waterline After AC Pmnt Removal and Prior to New AC Pmnt Placement. | N.P.I. |
| 17 Remove Existing Water Service Connection. Contractor to Field Verify Exact Location. Connect to New 8" Waterline W/ 1" Double Strap Bronze Service Saddle Per COA Detail. Connect New 1" Service Line to Existing Meter. | 25 EA |
| 18 Install D.I.P. Elbow Bend. Restrain Per MAG Std Dtl 303. Size and Angle as Indicated. | N.P.I. |
| 19 Install Gate Valve with Valve Box and Cover Per COA Detail. Size as Indicated.
- 6" Gate Valve with Box and Cover
- 8" Gate Valve with Box and Cover
- 10" Gate Valve with Box and Cover | - 1 EA
- 2 EA
- 1 EA |
| 20 Remove Existing Valve Box and Cover. | 2 EA |
| 21 Contractor to Field Verify Exact Location of Utility and Protect In Place and Ensure Minimum 2' Separation Between Waterline/Sewer line and Utility. | N.P.I. |
| 23 Install New Sewer Lateral - 4" Ductile Iron Pipe (D.I.P.) Class 350 with Protecto 401 Ceramic Epoxy Lining. | 5 EA |
| 24 Install D.I.P. Tee. Restrain Per MAG Std Dtl 303. Size as Indicated. | N.P.I. |
| 26 Disconnect and Remove Existing Fire Hydrant, Line and Valve. Replace per MAG Std Dtl 360. Hydrant to be Clow Model #850, Wet Barrel Hydrant with LBI Model #400 Breakaway Check Valve or Approved COA Equivalent. Hydrant will have a 2'x2' Class A Concrete Base. | 1 EA |
| 29 Install 8"x6" Tee and Gate Valve. Tapping Sleeve to be JCM-412 ESS or Approved Equal and Installed per MAG Std Dtl 340. Valve Box to be Per COA Detail. | N.P.I. |
| 30 Plug Per C.O.P. Std Dtl 1343 | 2 EA |
| 31 Contractor to Replace Manhole Per MAG Std Dtl 420-1,2 Flat Top. This Item to be Included as Bid Alternate and Determination for Replacement will be made During Construction by COA Staff. | 80 SF |
| 33 Contractor to Provide Pavement Cut for Removal/Replacement Per MAG Std Dtl 200 "T-Top" and as Modified Per COA Construction Specifications | |

"AS-BUILT"

SHEET NOTES

Dimensions and Station/Offsets are Referenced from Roadway C.

ENGINEERS NOTE TO THE CONTRACTOR

THE EXISTENCE AND LOCATION OF ANY UNDERGROUND UTILITIES, PIPES AND/OR STRUCTURES SHOWN ON THESE PLANS WERE OBTAINED BY A SEARCH OF AVAILABLE RECORDS. TO THE BEST OF OUR KNOWLEDGE, THERE ARE NO EXISTING UTILITIES EXCEPT AS SHOWN ON THESE PLANS. THE CONTRACTOR SHALL ASCERTAIN THE TRUE VERTICAL AND HORIZONTAL LOCATION AND SIZE OF ANY UNDERGROUND UTILITIES AND SHALL BE RESPONSIBLE FOR DAMAGE TO PUBLIC OR PRIVATE UTILITIES SHOWN OR NOT SHOWN HEREON.

CALL THE BIDDING DAYS BEFORE YOU BID
1-800-263-1100
1-800-STAKE-IT
(OUTSIDE MARICOPA COUNTY)

DRAWN BY: JP CHECKED BY: RDB DATE: UT-06 DESIGNED BY: AS SHOWN	 © 2007 KIMLEY-HORN AND ASSOCIATES, INC. 125 South Avenida Boulevard, Suite 115 Avondale, Arizona 85323 (623) 907-1155
PAVEMENT RECONSTRUCTION CDBG STREETS AND SIDEWALKS IMPROVEMENTS UTILITY PLAN - 7TH STREET- 24+50 TO 30+35 & CORRAL STREET	
ORIGINAL PLAN DATE: 12/05/07 LATEST REVISION DATE:	
SHEET NUMBER: 32 OF 33 PROJECT NUMBER: 06-ST1162	