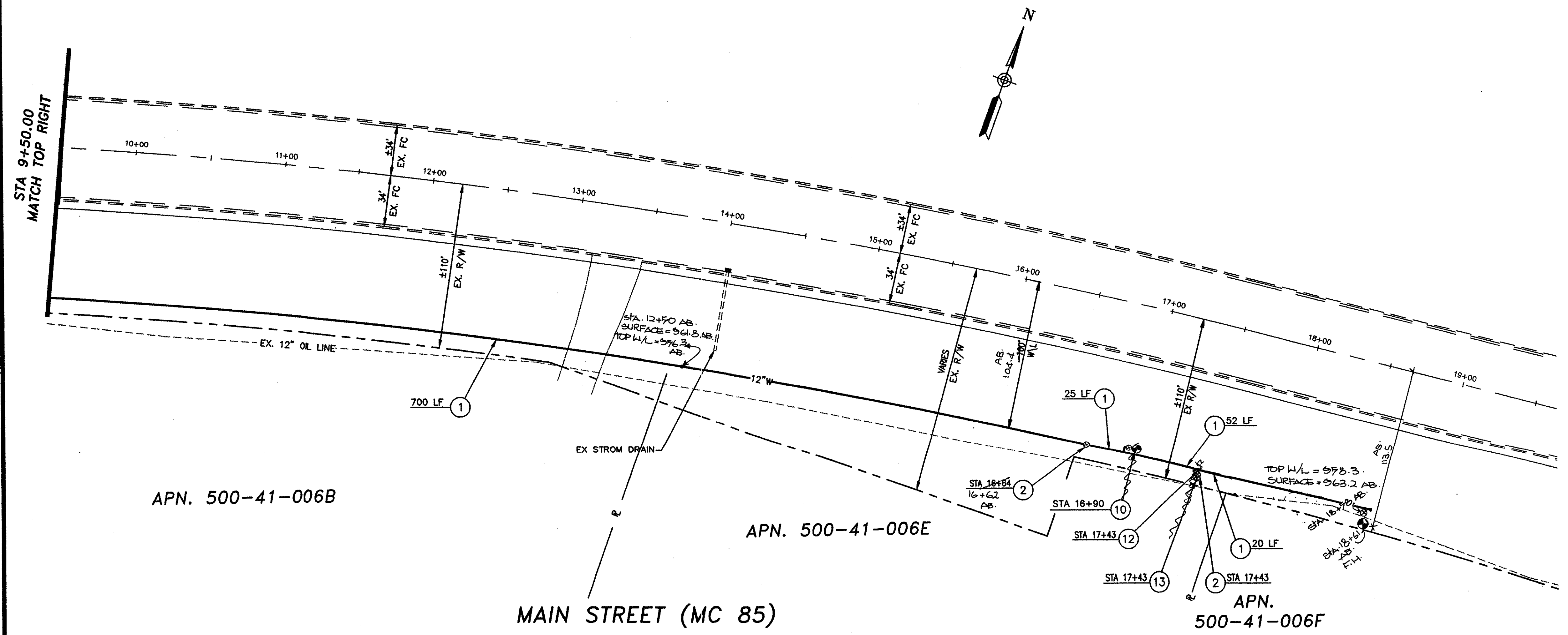
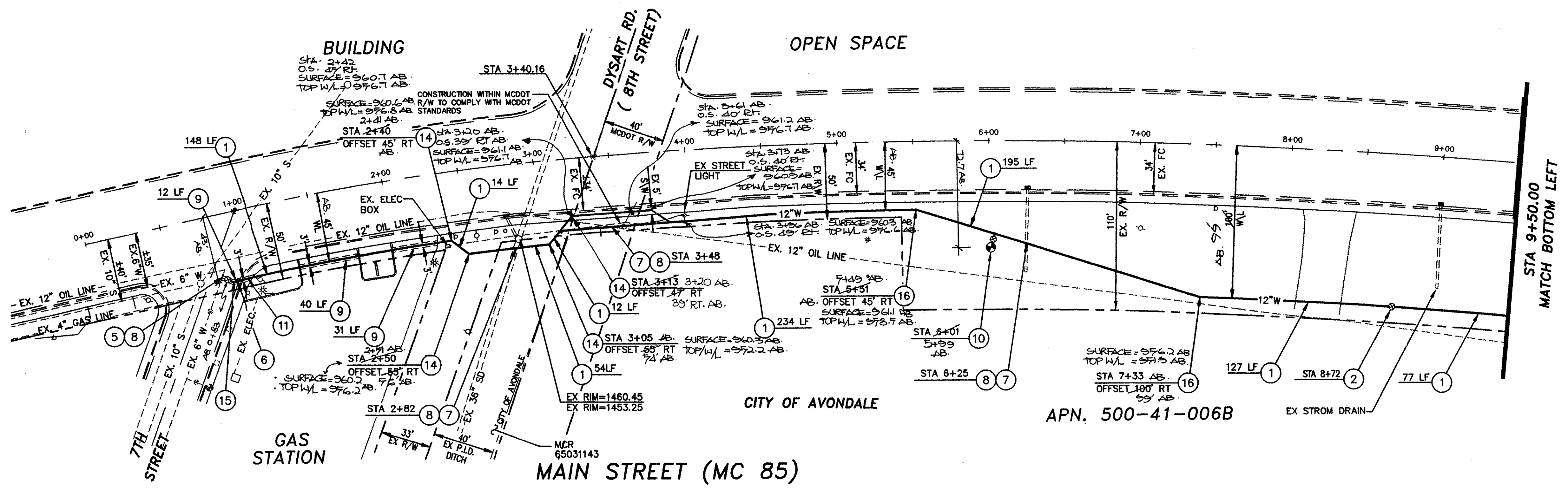


WATER NOTES

- 1 INSTALL 12" D.I.P. OR C-900 WATER LINE. 4' MIN. COVER.
- 2 INSTALL 12" VALVE, BOX & COVER PER MAG STD DTL 391-1 TYPE "C" RESILIENT SEATED GATED VALVE.
- 3 INSTALL 12" 45° BEND.
- 4 INSTALL 12" BLOWOFF PER MAG STD DTL 390.
- 5 INSTALL 6" TAPPING SLEEVE, VALVE, BOX & COVER PER MAG STD DTL 340. RESILIENT SEATED GATED VALVE DTL 340. RESILIENT SEATED GATED VALVE.
- 6 INSTALL 6" x 12" REDUCER.
- 7 DIP WATERLINE PER MAG STD DET 370. THRUST BLOCKS PER MAG STD DTL 381. MAINTAIN 2' VERTICAL SEPARATION.
- 8 LOCATE AND VERIFY HORIZONTAL AND VERTICAL ALIGNMENT BEFORE TRENCHING. NOTIFY ENGINEER OF ANY DISCREPANCY.
- 9 SAWCUT, REMOVE AND REPLACE EXISTING ASPHALT PER MAG STD DTL 200 TYPE "T" W/100% COMPACTION AND 1 SACK SLURRY.
- 10 INSTALL COMPLETE FIRE HYDRANT ASSEMBLY PER MAG STD DTL 360 & 362.
- 11 SAWCUT, REMOVE AND REPLACE EXISTING CURB, GUTTER AND SIDEWALK.
- 12 INSTALL 12" x 12" x 12" TEE.
- 13 INSTALL 12" PLUG.
- 14 INSTALL 12" 45° BEND.
- 15 INSTALL 6" 22.5° BEND.
- 16 INSTALL 12" 22.5° BEND.



MAIN ST. WATER LINE EXTENSION WATER PLAN

AMERICAN ENGINEERING CO.
 consulting engineers/surveyors
 21442 NORTH 30TH AVENUE • PHOENIX, ARIZONA 85027 • 505-5595

	LAYOUT	DRAFTED	CHECKED
	RES	RES	SML
	DRAWING SCALE(S)	1" = 40'	
	ORIGINAL PLAN DATE	APR/1998	
LATEST REVISION	6/18/98	2	
PROJECT NUMBER	97446	OF 2 SHEETS	

AS BUILT

6: \SIS\PROJ\197446\1746102.dwg F1 Aug 14 09:18:35 1998 JED