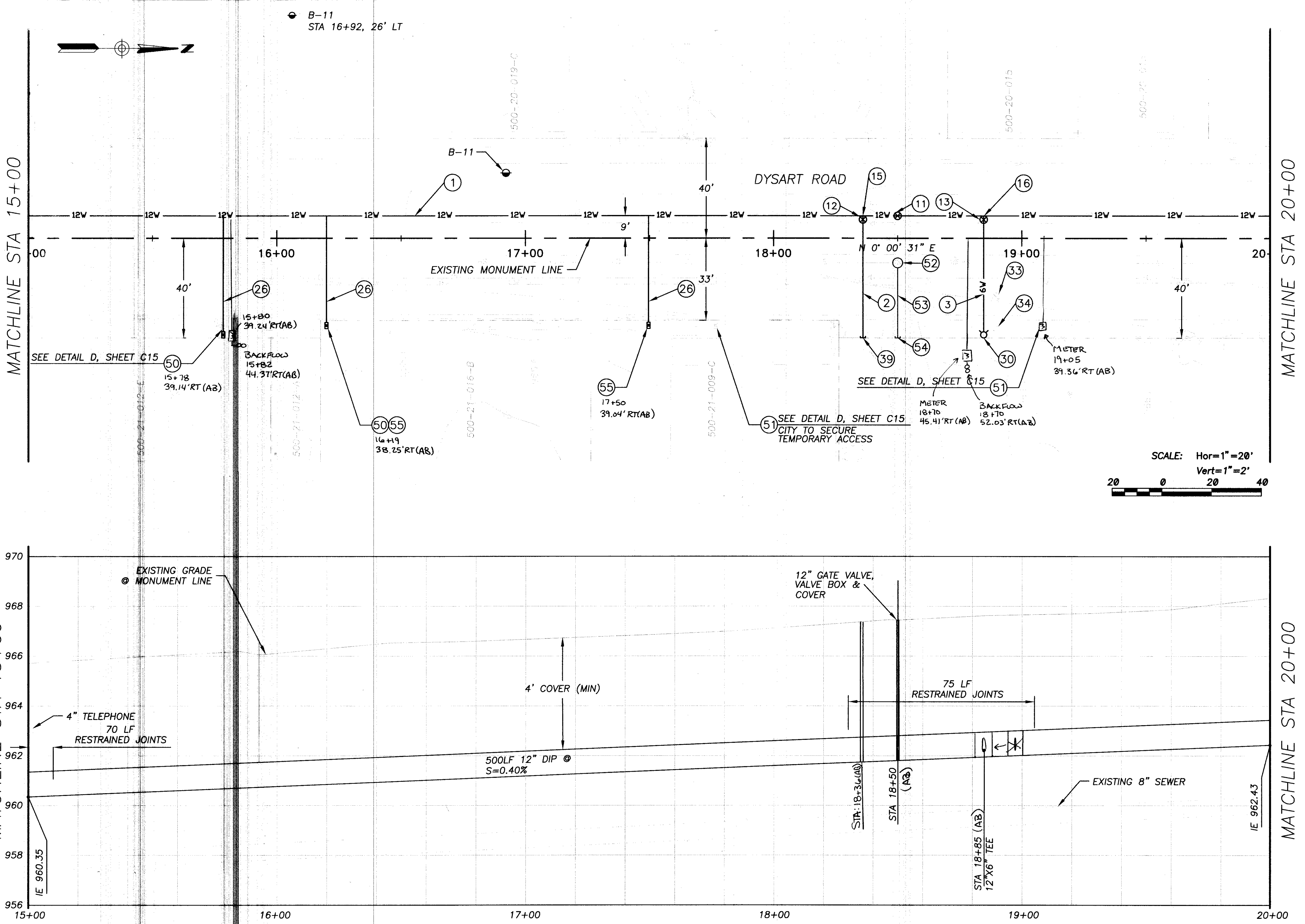
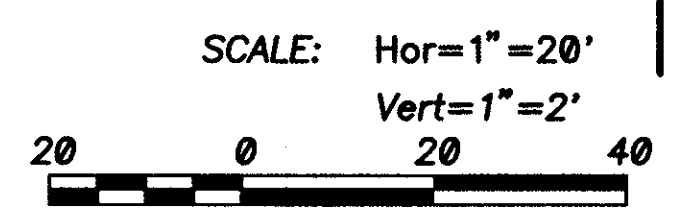


XREFS: 18259_BDR; right-of-way; Avondale Waterline Survey; 18259_000; 18259_PROF; existing utilities; 18259_KC2MAP_STA_18259_PROF_WL; 18259_GEO_STA_0



- Construction Notes:**
- 1) 12" DIP WATER PER MAG STD SPEC 75C 500 LF
 - 2) 8" DIP WATER (RESTRAIN ALL JOINTS) PER MAG STD SPEC 75C 49 LF
 - 3) 6" DIP WATER (RESTRAIN ALL JOINTS) PER MAG STD SPEC 75C 49 LF
 - 11) STA 18+50, 9' LT 12" GATE (AB) 1 EA VALVE, W/ VALVE BOX & COVER
 - 12) STA 18+36, -8' LT 8" GATE 7.33' LT (AB) EA VALVE, W/ VALVE BOX & COVER
 - 13) STA 18+85, 8' LT 6" GATE 8.29' LT (AB) EA VALVE, W/ VALVE BOX & COVER
 - 15) STA 18+36, 9' LT 12"x8" TEE (AB) 1 EA
 - 16) STA 18+85, 9' LT 12"x6" TEE (AB) 1 EA
 - 26) STA 15+78, 2" WATER SERVICE (AB) 3 EA (CITY TO PROVIDE METER)
STA 16+20, 2" WATER SERVICE 16+19 (AB) (CITY TO PROVIDE METER)
STA 17+50, 2" WATER SERVICE (AB) (CITY TO PROVIDE METER)
 - 30) STA 18+85, 39' RT FIRE 38.63' RT (AB) EA HYDRANT ASSEMBLY, PER DTL G SHT C16
 - 33) REMOVE VALVE BOX PER DTL B SHT C15
 - 34) REMOVE HYDRANT, PER DTL A SHT C15
 - 39) STA 18+36, 49' RT 8" CURB (AB) 1 EA STOP W/ FLUSHING PIPE PER MAG STD DTL 390, TYPE "B"
 - 50) REMOVE EXISTING METER AND METER BOX 2 EA
 - 51) REMOVE METER BOX AND CAP SERVICE LINE 2 EA
 - 52) STA 18+50, 10' RT (AB) 1 EA INSTALL SEWER MANHOLE PER MAG DTL 420-2, TYPE "B"
 - 53) INSTALL 6" SERVICE LINE PER MAG DTL 440-1, CONTRACTOR TO MATCH CROWNS 30 LF
 - 54) INSTALL SEWER CAP WITH LOCATOR WIRE 18+50.49 RT (AB) 1 EA
 - 55) INSTALL NEW WATER METER ON PRIVATE PROPERTY (CITY TO SECURE TEMPORARY ACCESS) 2 EA



NO.	REVISIONS	DWN	APVD	APVD	DATE

Stanley Consultants INC.
1661 East Camelback Road, Suite 400, Phoenix, Arizona 85016
www.stanleygroup.com

CITY OF AVONDALE
DYSART ROAD WATER LINE IMPROVEMENTS
VAN BUREN STREET TO WESTERN AVENUE

**PLAN AND PROFILE
STA 15+00 TO STA 20+00**

CALL TWO WORKING DAYS BEFORE YOU DIG
(602) 263-1100
1-800-STAKE-IT
(OUTSIDE MARICOPA COUNTY)

DESIGNED MB	SCALE: 1"=20'
DRAWN RCM	NO.
CHECKED JM	REV.
APPROVED BED	C2
DATE FEBRUARY 2007	-

AS-BUILT