

# PORTERVILLE UNIFIED SCHOOL DISTRICT

*Creating Opportunities: Changing Lives*

## DISTRICT BOARD OF TRUSTEES

PETE LARA, JR.  
President

LILLIAN DURBIN  
Vice President

SHARON GILL  
Clerk

600 West Grand Avenue  
Porterville, CA 93257  
(559) 793-2400

NATE NELSON, Ed.D.  
DISTRICT SUPERINTENDENT  
(559) 793-2455  
(559) 793-1088 FAX

## DISTRICT BOARD OF TRUSTEES

DAVID DePAOLI  
Member

FELIPE MARTINEZ  
Member

TOMAS VELASQUEZ  
Member

BRAD ROHRBACH, Ed.D.  
Asst. Superintendent  
Business Services  
(559) 793-2450  
(559) 781-8386 FAX

ANDY BUKOSKY, Ed.D.  
Asst. Superintendent  
Human Resources  
(559) 793-2480  
(559) 791-0401 FAX

MARTHA STUEMKY, Ed.D.  
Asst. Superintendent  
Instructional Services  
(559) 793-2452  
(559) 793-1083 FAX

School Site Address: Multiple School Sites **ASPHALT SEAL COAT, STRIPING, ASPHALT REPLACEMENT, CONCRETE REPLACEMENT AND DIRT GRADING 2021**

Job Walk: **December 21, 2020 @ 1:00 PM** MONACHE HIGH SCHOOL  
960 N NEWCOMB ST - PORTERVILLE, CA 93257

Bids Due: **December 28, 2020 @ 1:00 PM**

Anticipated Start date if approved **Mid-January**

## SCOPE OF WORK PER SITE:

MONACHE HIGH SCHOOL  
960 N NEWCOMB ST  
PORTERVILLE, CA 93257:

1. Basketball Courts: Remove debris from cracks and fill w/rubberized crack filler & apply (2) coats of "TUF-COTE" and re- stripe existing scheme on basketball courts  
66,000 +/- Sq./Ft  
= \$ \_\_\_\_\_

SEQUOIA MIDDLE SCHOOL  
1450 W CASTLE AVE  
PORTERVILLE, CA 93257:

1. Admin Parking Lot: Remove debris from cracks and fill w/rubberized crack filler & apply (2) coats of "TUF-COTE" and re- stripe existing scheme on basketball courts  
3,000 +/- Sq/Ft  
= \$ \_\_\_\_\_
2. Basketball Courts: Remove debris from cracks and fill w/rubberized crack filler & apply (2) coats of "TUF-COTE" and re- stripe existing scheme on basketball courts  
25,500 +/- Sq/Ft = \$ \_\_\_\_\_

MONTE VISTA ELEMENTARY  
701 W WESTFIELD AVE  
PORTERVILLE, CA 93257:

1. Admin Parking Lot: Remove debris from cracks and fill w/rubberized crack filler & apply (2) coats of "TUF-COTE" and re- stripe existing scheme on parking lot 24,800 +/- Sq/Ft  
= \$ \_\_\_\_\_
2. Basketball Courts: Remove debris from cracks and fill w/rubberized crack filler & apply (2) coats of "TUF-COTE" and re- stripe existing scheme on basketball/thederball courts 20,600 +/- Sq/Ft = \$ \_\_\_\_\_
3. Fire Lane: Remove debris from cracks and fill w/rubberized crack filler & apply (2) coats of "TUF-COTE" and re- stripe as required 13,200 +/- Sq/Ft
4. Demo and replace asphalt basketball area with new 2" of asphalt per the attached picture.  
= \$ \_\_\_\_\_
5. Replace Asphalt Basketball court area with new 5" concrete 5.5 sack mix and 1-1/2" rock.  
= \$ \_\_\_\_\_
6. Demo and grade site for 5" of concrete. Install 6" Base rock that will need to be installed and compacted to 95% Testing of Base rock will be handled by CTL Testing lab PUSD shall cover all testing lab cost. Concrete shall match existing concrete grades.  
= \$ \_\_\_\_\_

SANTA FE ELEMENTARY SCHOOL  
286 E ORANGE AVE  
PORTERVILLE, CA 93257:

1. Admin Parking Lot: Remove debris from cracks and fill w/rubberized crack filler & apply (2) coats of "TUF-COTE" and re- stripe existing scheme on parking lot 33,200 +/- Sq/Ft. Saw cut and remove a 24'x24' area of asphalt and replace with 3" thick and skim patch area with asphalt. Will also include painting of existing curbs in parking lot.  
= \$ \_\_\_\_\_

LOS ROBLES ELEMENTARY SCHOOL  
500 E MULBERRY AVE  
PORTERVILLE, CA 93257:

7. Demo and replace asphalt basketball area with new 2" of asphalt per the attached picture.  
= \$ \_\_\_\_\_
8. Replace Asphalt Basketball court area with new 5" concrete 5.5 sack mix and 1-1/2" rock.  
= \$ \_\_\_\_\_
9. Demo and grade site for 5" of concrete. Install 6" Base rock that will need to be installed and compacted to 95% Testing of Base rock will be handled by CTL Testing lab PUSD shall cover all testing lab cost. Concrete shall match existing concrete grades.  
= \$ \_\_\_\_\_

PORTERVILLE HIGH SCHOOL  
465 W OLIVE AVE  
PORTERVILLE, CA 93257:

1. Grade site as noted on attached drawing. Install 6" of Decompose Granite and compact with a wheel roller approximately 15,000sf +/-.  
= \$ \_\_\_\_\_

If you should have any questions, please feel free to contact me @ (559) 310-9274.

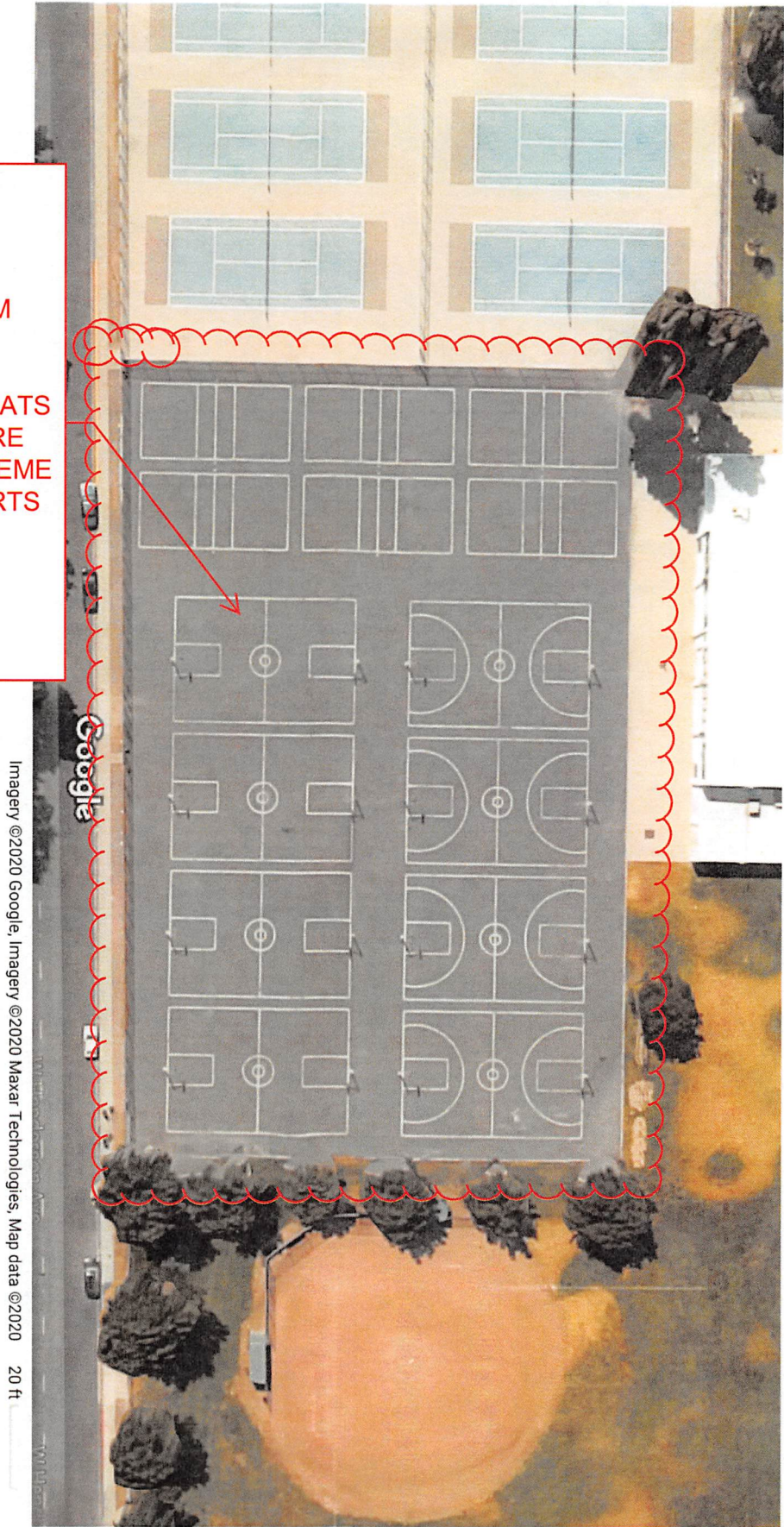
Thank you

Omar Flores  
Project Manager  
Porterville Unified School District  
(559) 782-7066 ext. 4641  
[omarflores@portervilleschools.org](mailto:omarflores@portervilleschools.org)



PUSD-MONACHE HIGH SCHOOL

REMOVE DEBRIS FROM  
CRACKS AND WILL W/  
RUBBERIZED CRACK  
FILLER & APPLY (2) COATS  
OF "TUFF COTE" AND RE  
STRIPE EXISTING SCHEME  
ON BASKETBALL COURTS

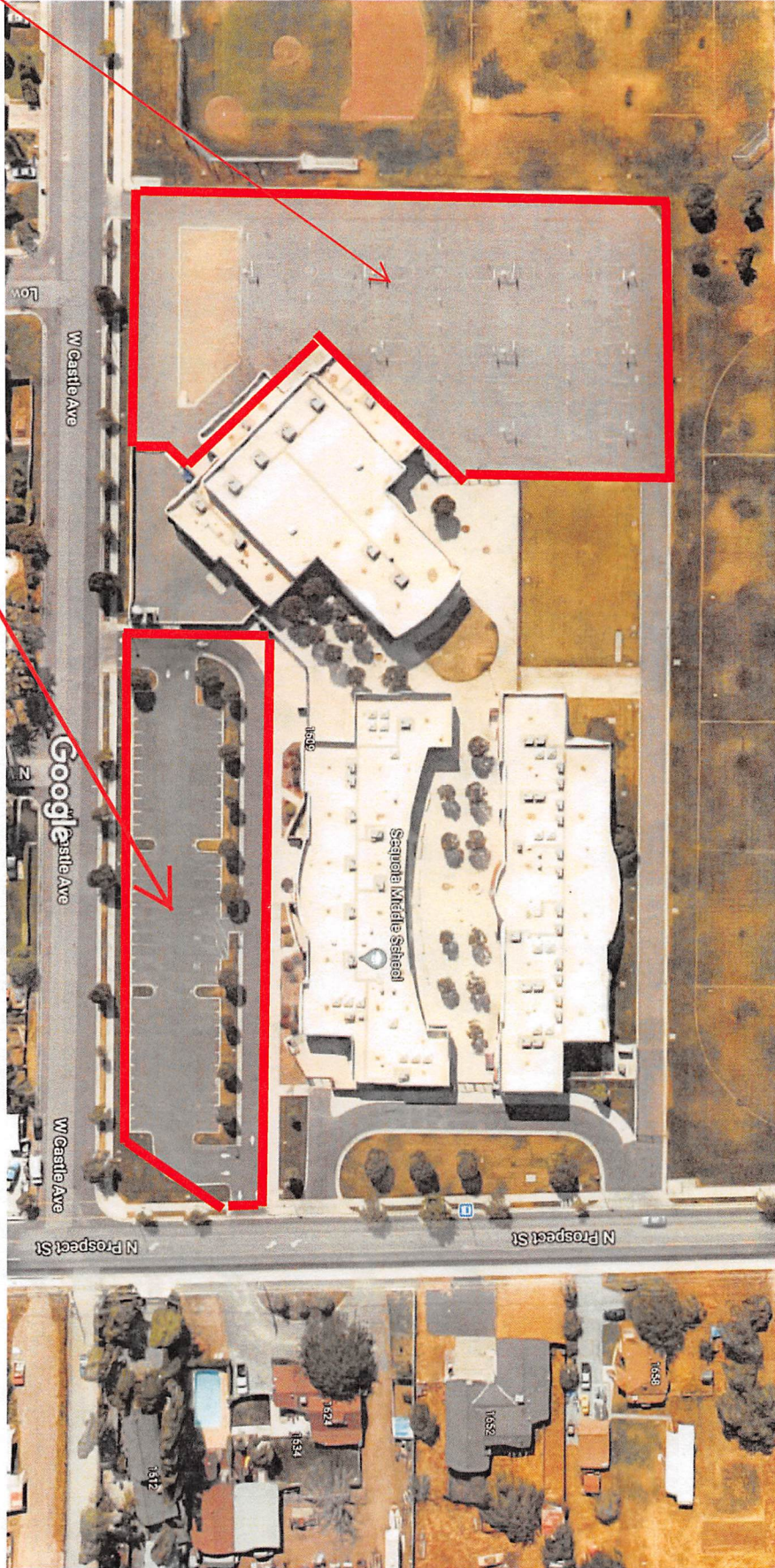




SEQUOIA MIDDLE SCHOOL

REMOVE DEBRIS FROM CRACK AND FILL W/ RUBBERIZED CRACK FILLER & APPLY (2) COATS OF "TUF COAT AND RE STRIPE EXISTING SCHEME

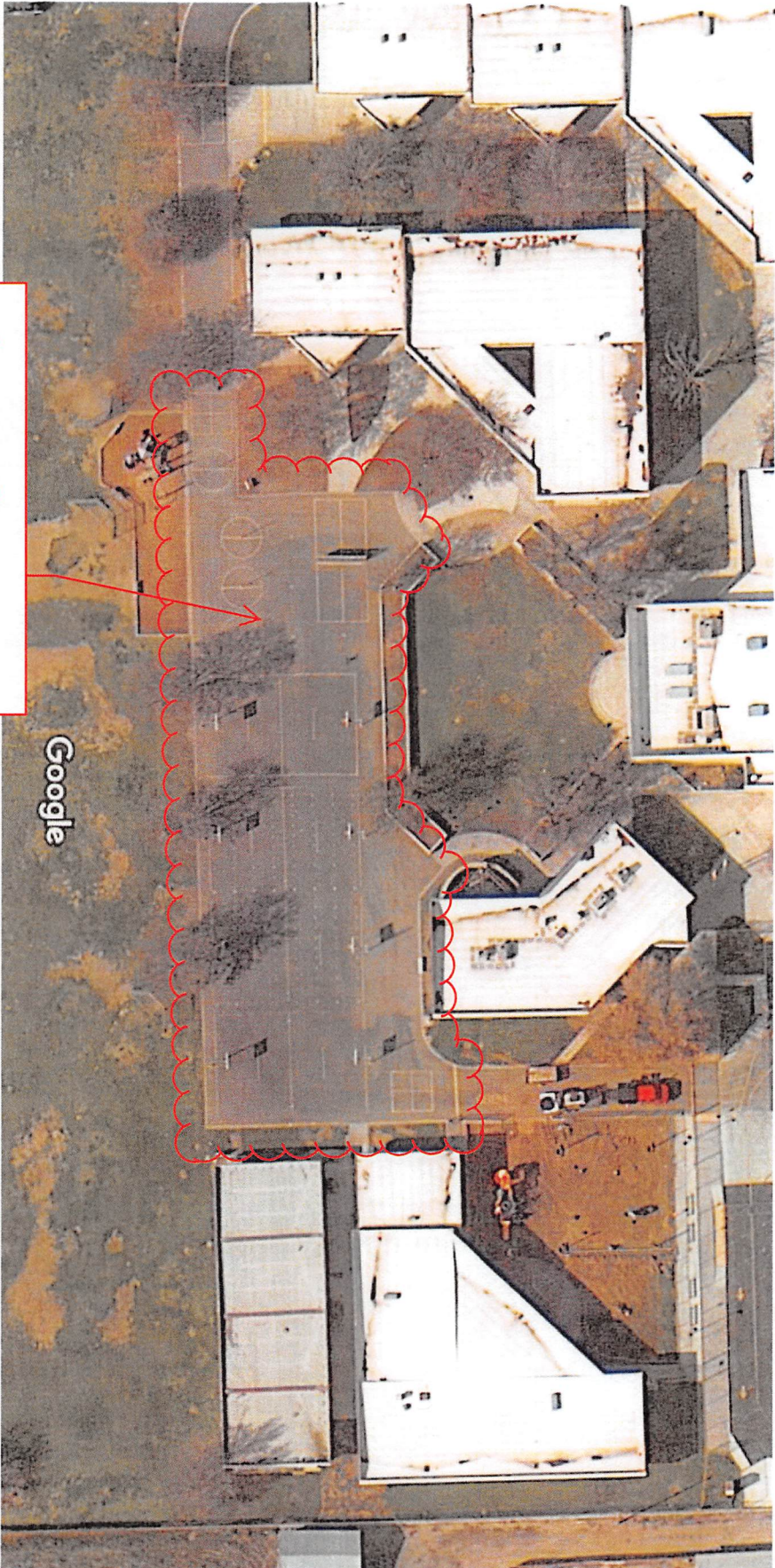
Imagery ©2020 Google, Imagery ©2020 Maxar Technologies, Map data ©2020 50 ft





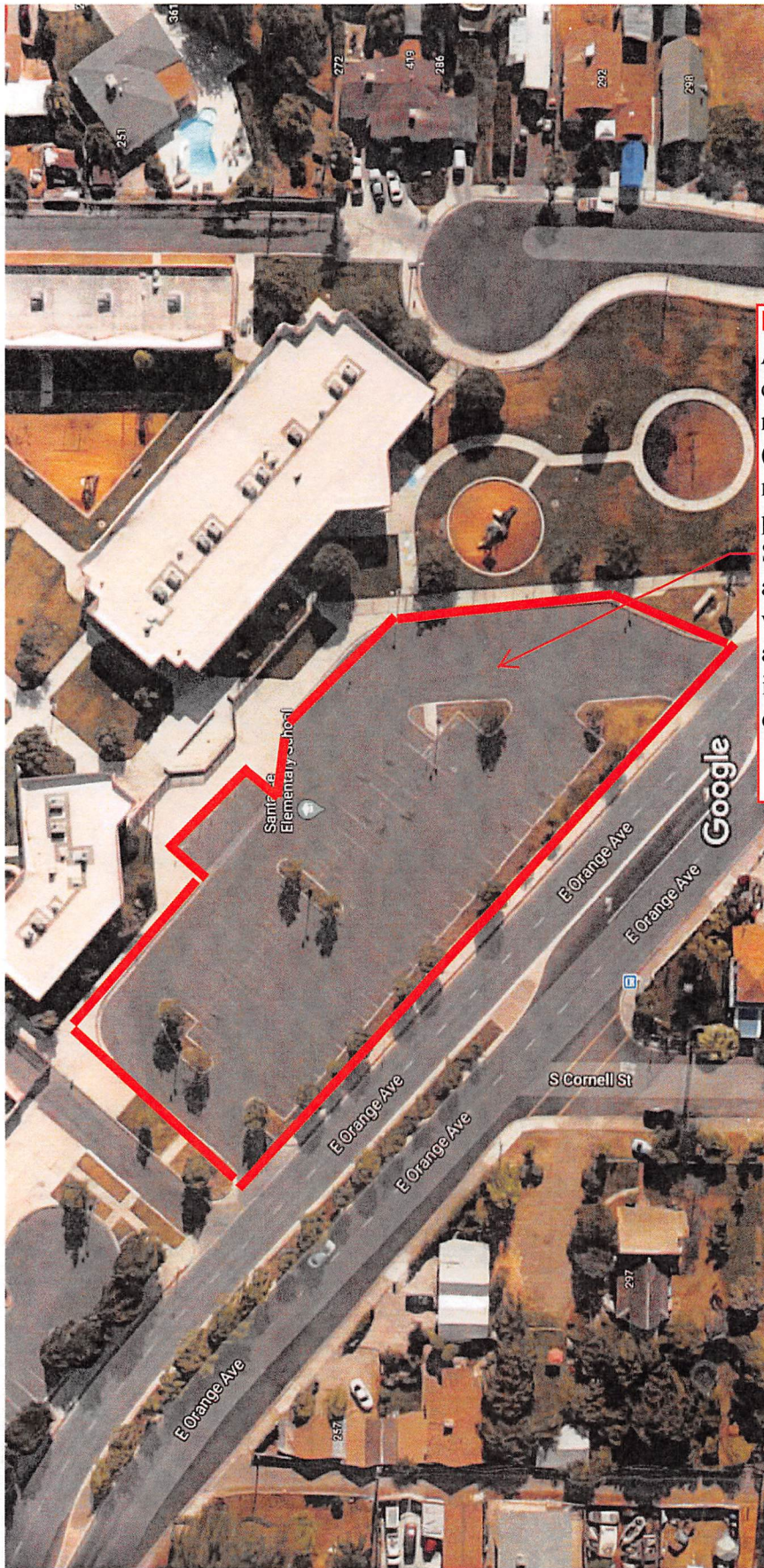
PUSD- MONTE VISTA  
ELEMENTARY SCHOOL.

DEMO AND REPLACE  
EXISTING ASPHALT AS  
CLOUDED WITH NEW 2"  
ASPHALT  
RE-STRIPE EXISTING  
SCHEME ON  
BASKETBALL COURTS  
AND THEDERBALL  
COURTS.



Google





### PUSD- SANTA FE

Admin Parking Lot: Remove debris from cracks and fill w/ rubberized crack filler & apply (2) coats of "TUF-COTE" and re- stripe existing scheme on parking lot 33,200 +/- Sq/Ft. Saw cut and remove a 24'x24' area of asphalt and replace with 3" thick and skim patch area with asphalt. Will also include painting of existing curbs in parking lot.

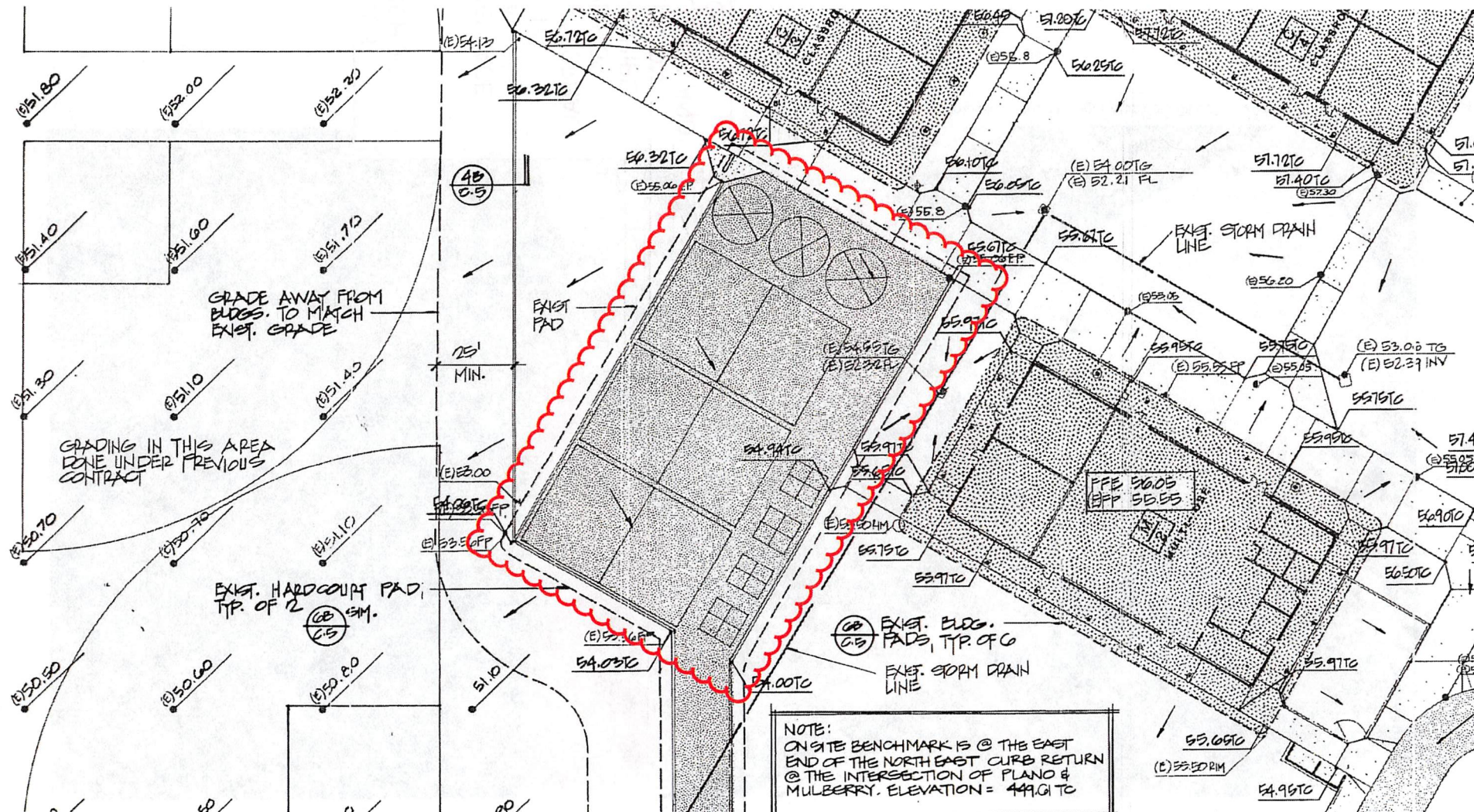


PUSD-LOS ROBLES  
ELEMENTARY SCHOOL

REMOVE AND REPLACE  
EXISTING ASPHALT  
PROVIDE PRICE TO  
REPLACE WITH 2" ASPHALT  
OR REPLACE WITH 5"  
CONCRETE. RE-STRIPE  
EXISTING SCHEME ON  
BASKETBALL COURTS AND  
THERDERBALL COURTS.

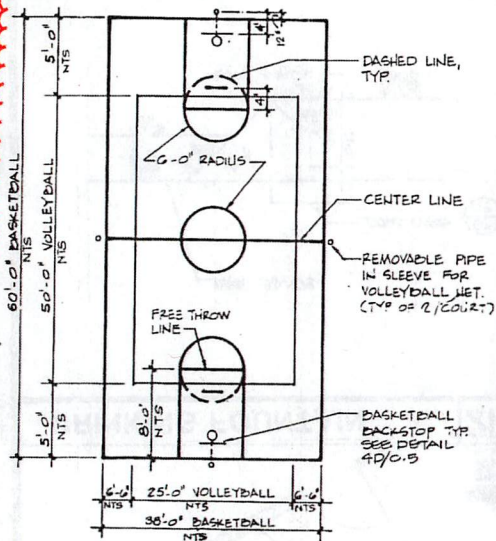








SEE (BD/C4) FOR COURT EQUIPMENT



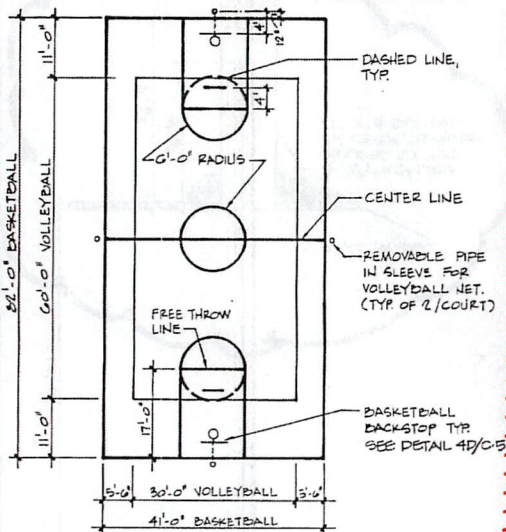
BASKETBALL COURT MARKINGS:  
2" WIDE PAINTED LINES  
VOLLEYBALL COURT MARKINGS:  
1 1/2" WIDE PAINTED LINES

COMBINATION BASKETBALL/  
VOLLEYBALL COURT

NO SCALE

### COURT EQUIPMENT

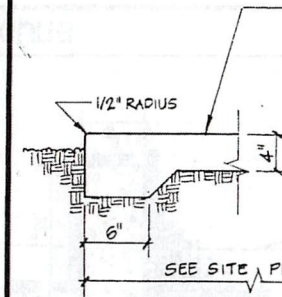
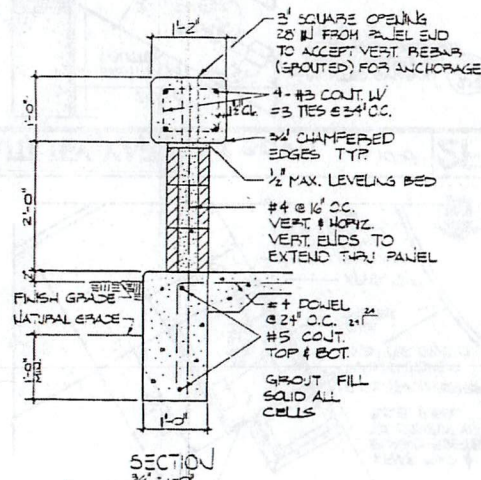
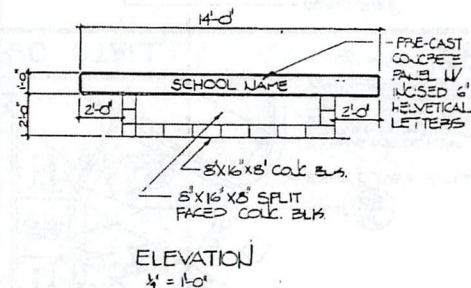
1. BASKETBALL BACKSTOP:  
PATTERSON-WILLIAMS MODEL 1533 (SINGLE POST W/ ONE 4' OFFSET)  
OR APPROVED EQUAL.
2. VOLLEYBALL POSTS:  
PATTERSON-WILLIAMS MODEL 2214-00, 2 7/8" O.D. (SIDE POSTS)  
AND MODEL 2214-31, 2 7/8" O.D. (CENTER POSTS); EACH W/  
GROUND SLEEVES MODEL 2202-30 OR APPROVED EQUAL.



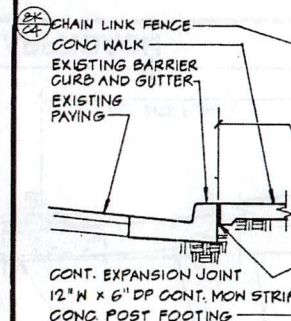
BASKETBALL COURT MARKINGS:  
2" WIDE PAINTED LINES  
VOLLEYBALL COURT MARKINGS:  
1 1/2" WIDE PAINTED LINES

COMBINATION BASKETBALL/  
VOLLEYBALL COURT

1/8" = 1'-0"



### WALK



CONT. EXPANSION JOINT  
12" W x 6" DP CONT. MON STRIP  
CONC. POST FOOTING

GAME COURT

8B

GAME COURT

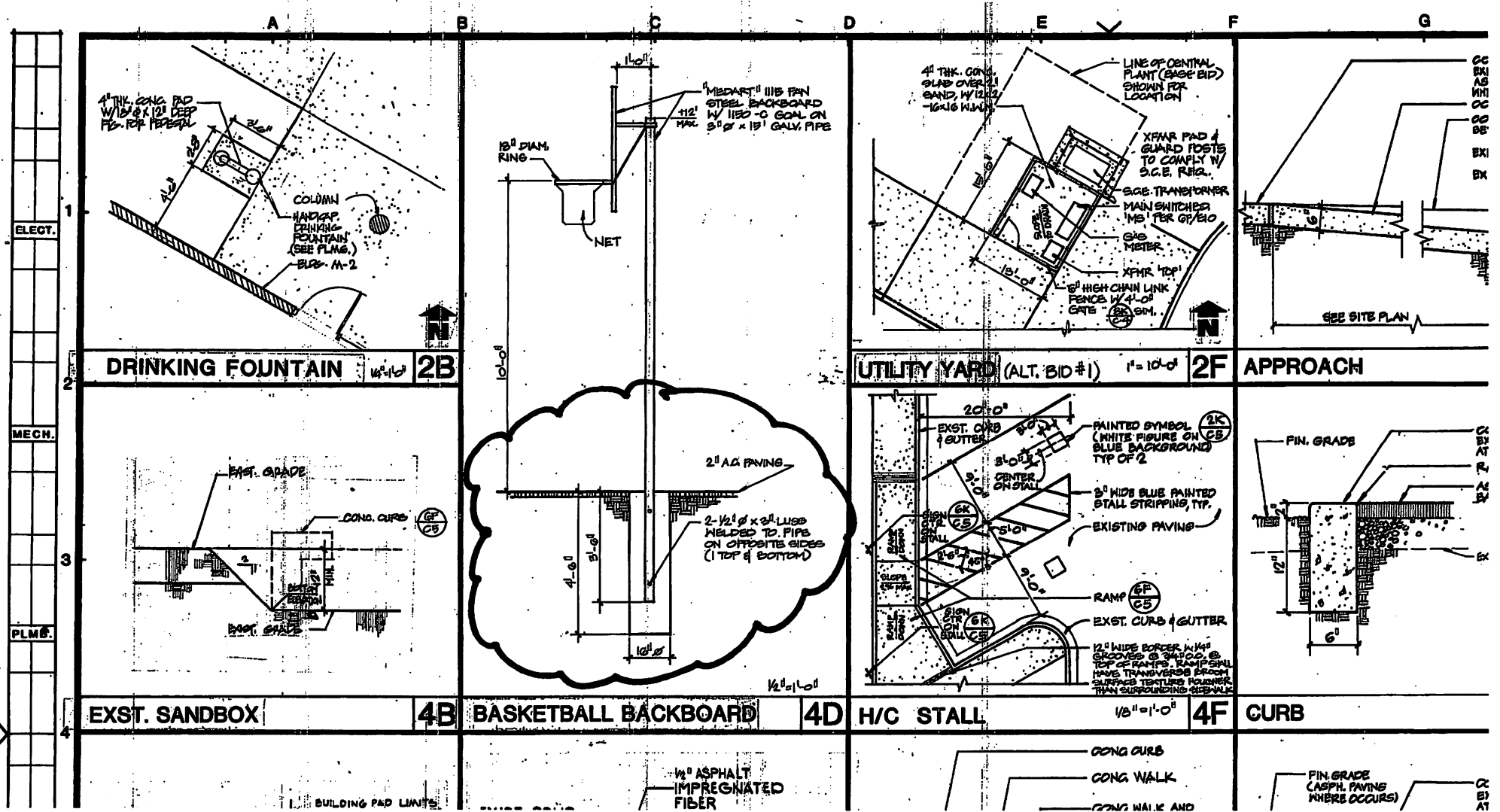
8D

SIGN

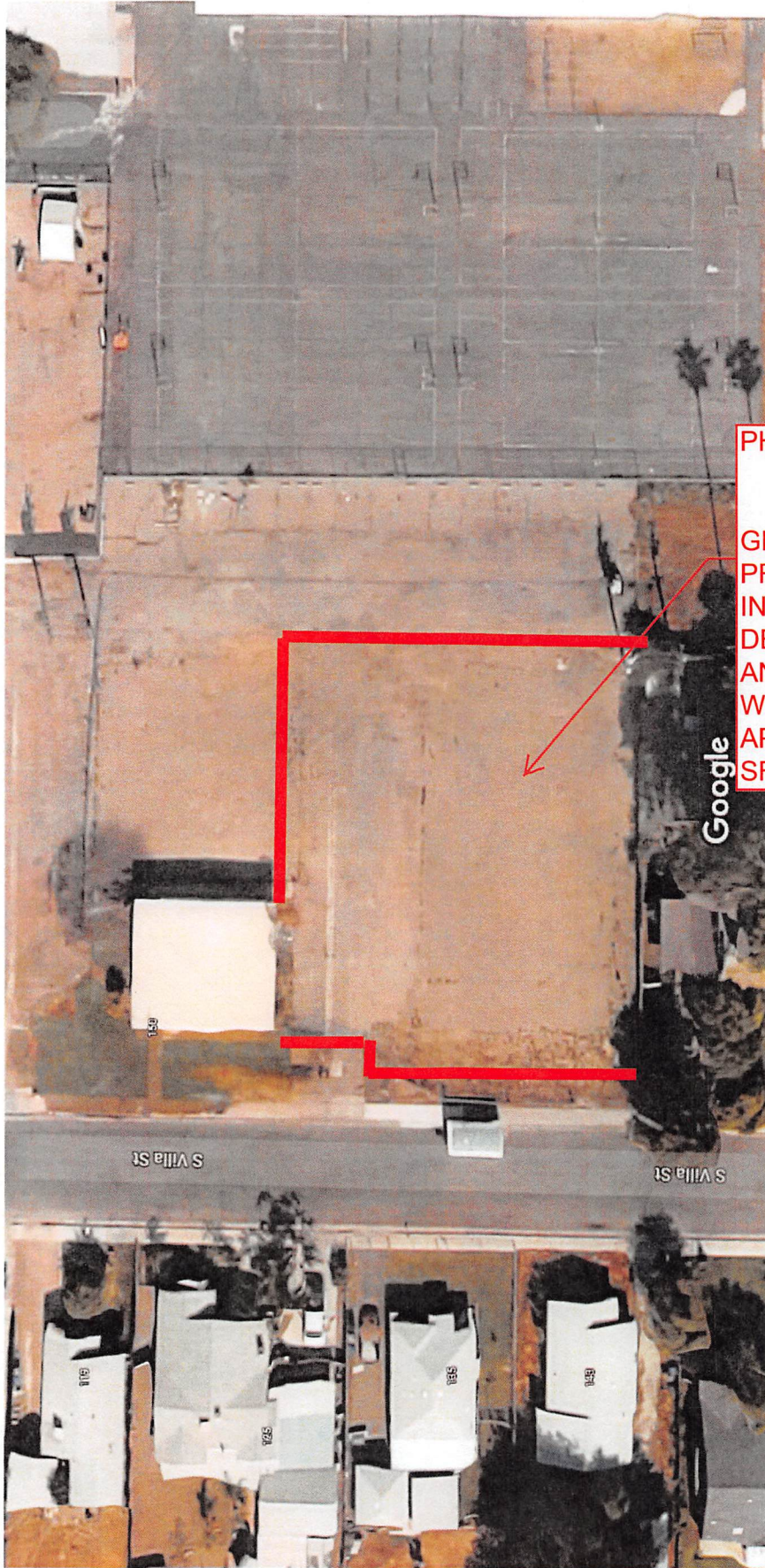
8F

SIDEWALK PROFILE









PHS PARKING LOT

GRADE SITE FOR  
PROPER DRAINAGE AND  
INSTALL 6" OF  
DECOMPOSE GRANITE  
AND COMPACT WITH A  
WHEEL ROLLER.  
APPROXIMATELY 15,000  
SF+/-