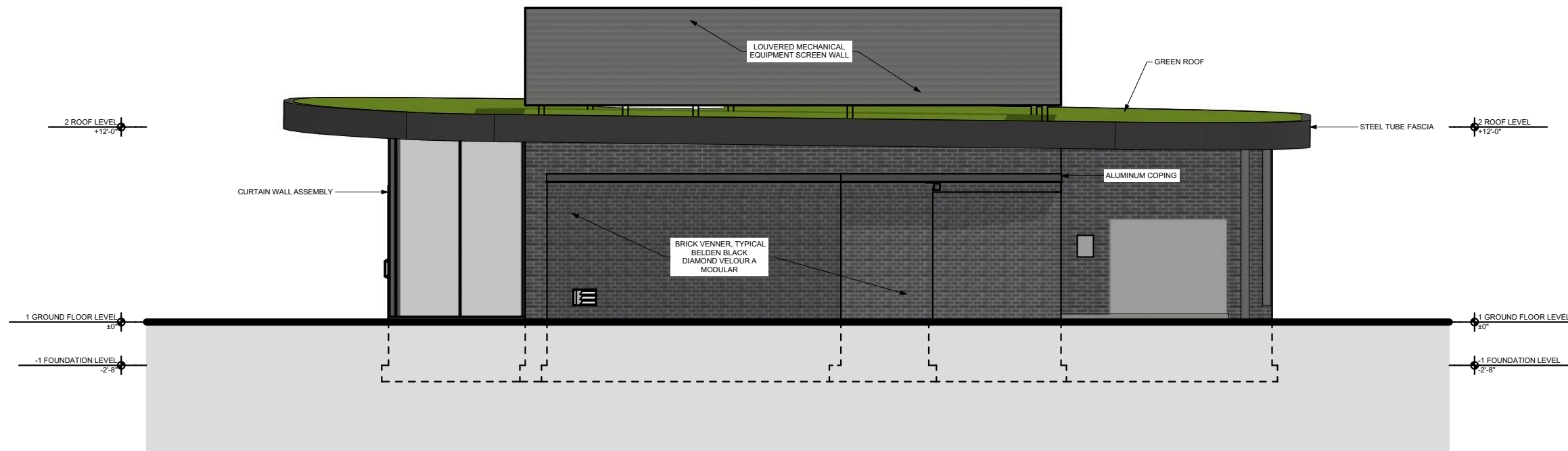


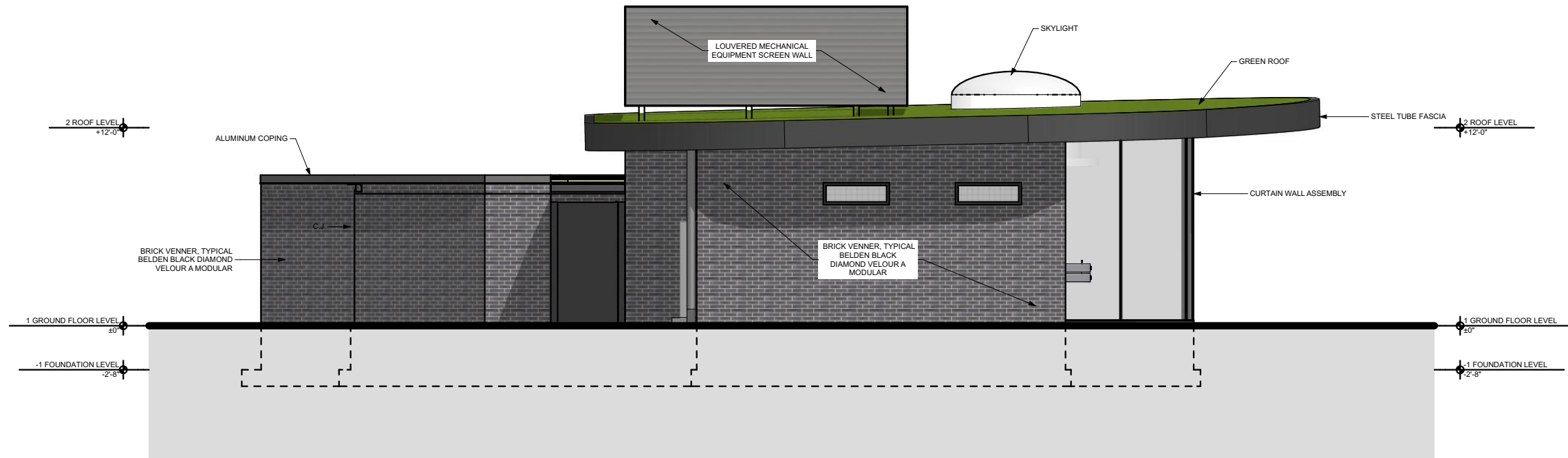
# SOUTH ELEVATION

SCALE: 1/8" = 1'-0"



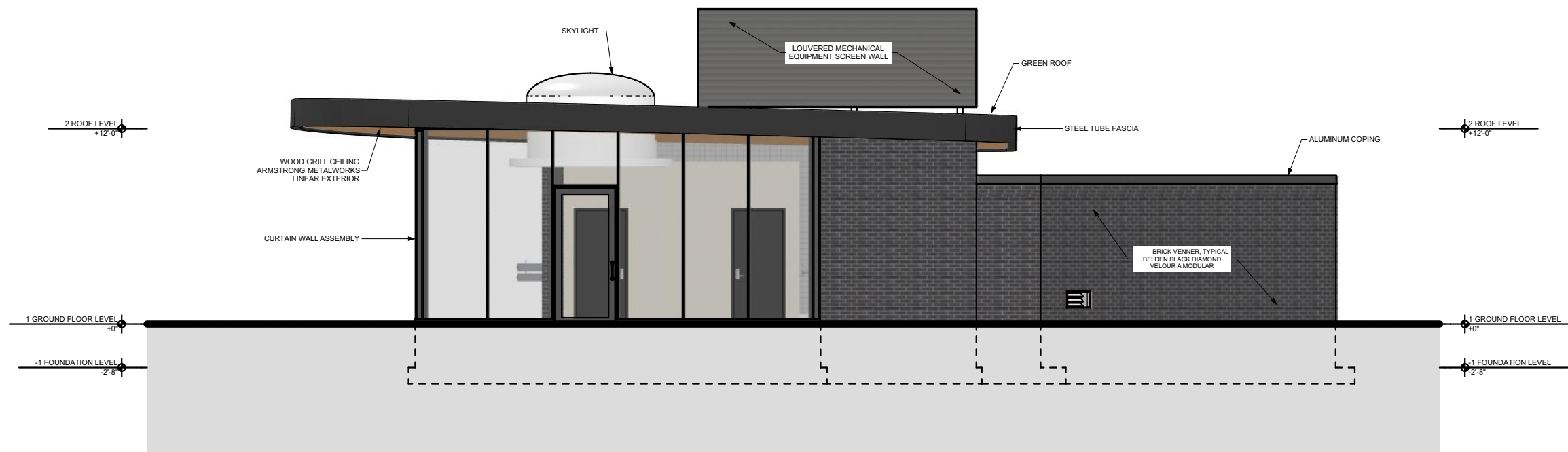
# NORTH ELEVATION

SCALE: 1/8" = 1'-0"



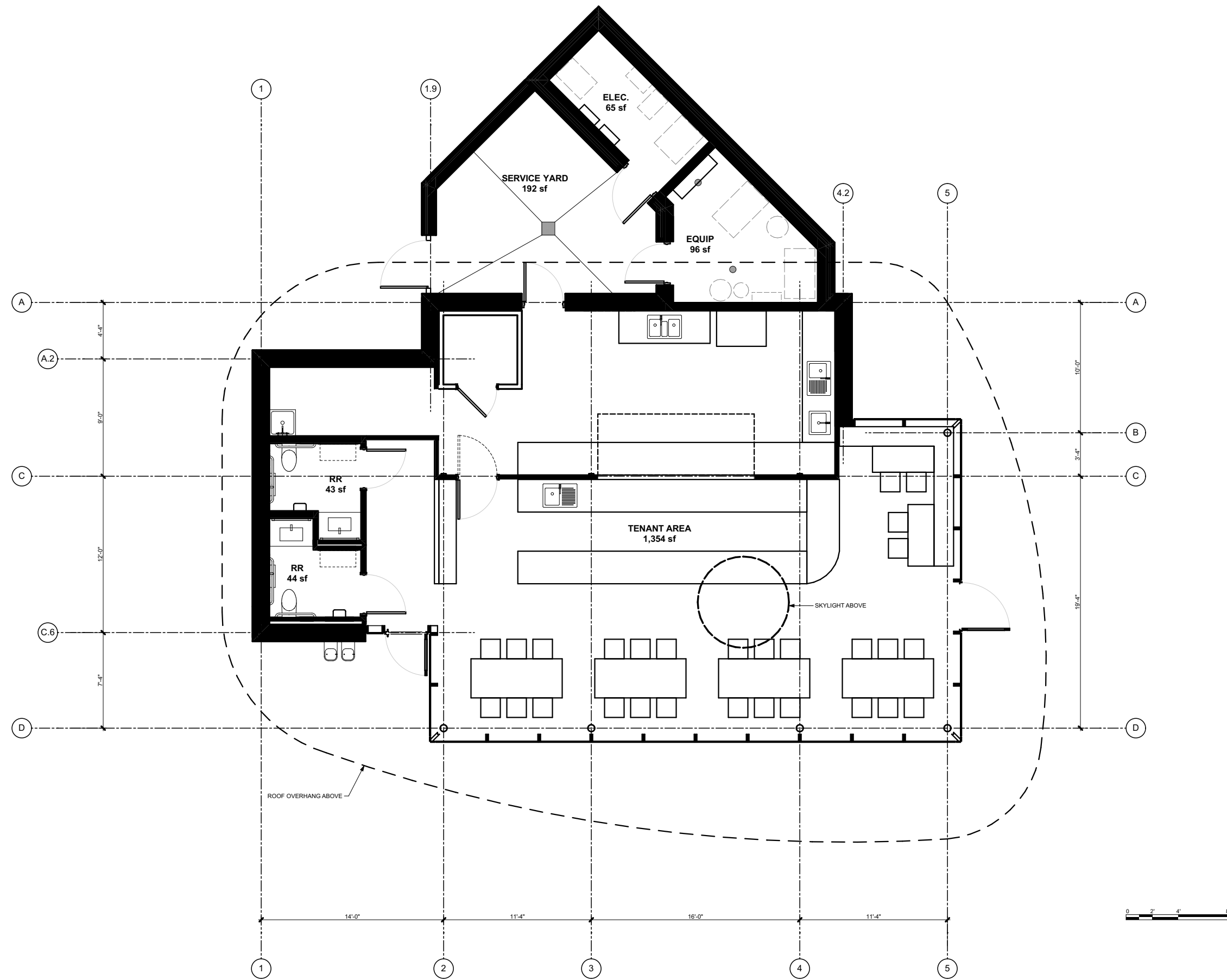
## WEST ELEVATION

SCALE: 1/8" = 1'-0"



## EAST ELEVATION

SCALE: 1/8" = 1'-0"



# GROUND FLOOR LEVEL

SCALE: 1/8" = 1'-0"