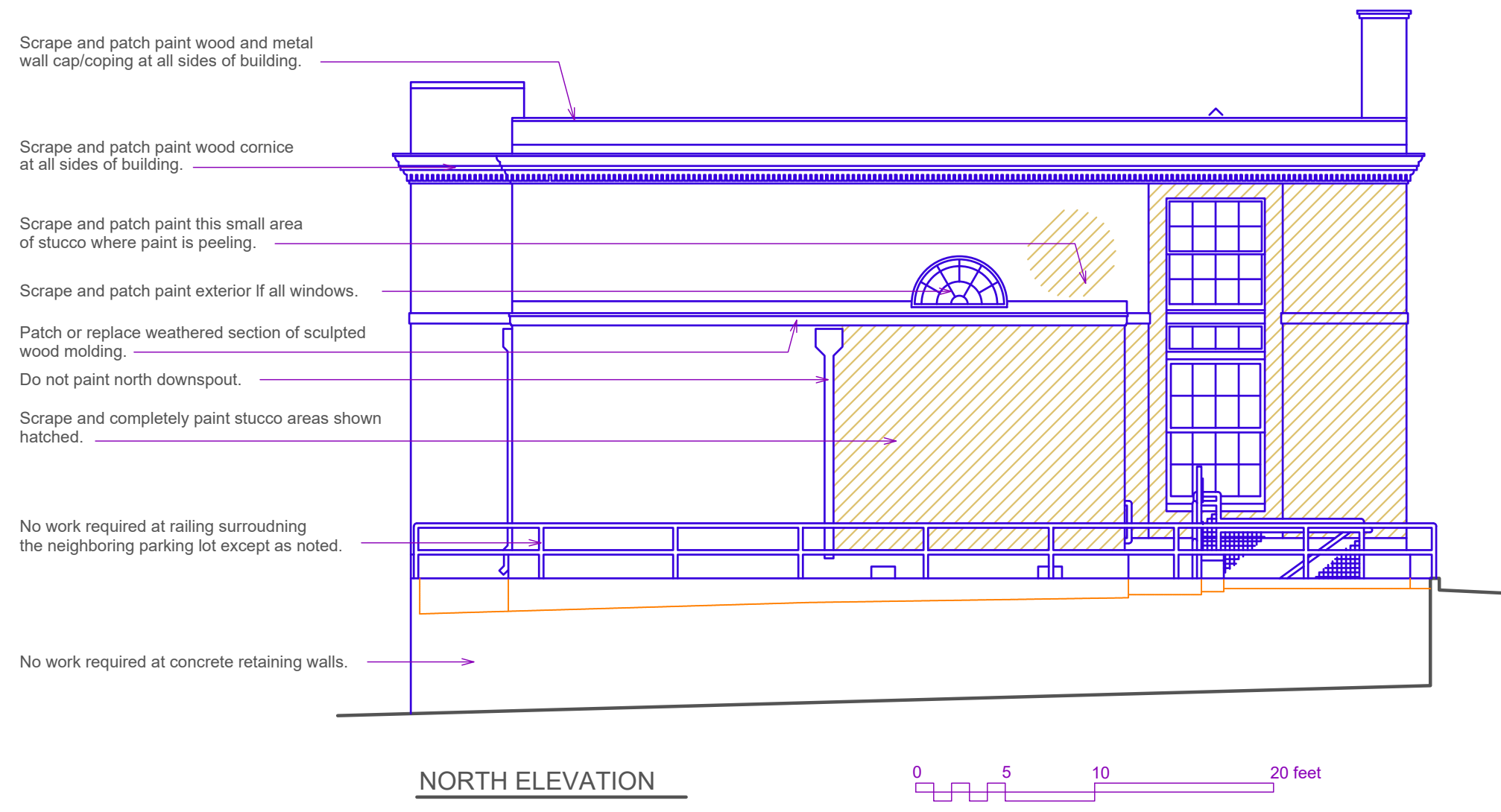
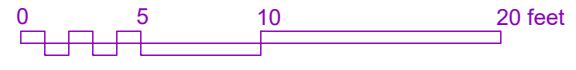


REVISIONS			
NO.	DATE	CHANGES	BY



- Scrape and patch paint wood and metal wall cap/coping at all sides of building.
- Scrape and patch paint wood cornice at all sides of building.
- Scrape and patch paint this small area of stucco where paint is peeling.
- Scrape and patch paint exterior of all windows.
- Patch or replace weathered section of sculpted wood molding.
- Do not paint north downspout.
- Scrape and completely paint stucco areas shown hatched.
- No work required at railing surrounding the neighboring parking lot except as noted.
- No work required at concrete retaining walls.

**NORTH ELEVATION**



**Alpha Design ARCHITECTS**  
 108 Cook Ave.  
 P.O. Box 241  
 Raton, NM 87740  
 phone (575) 445-4235  
 Email: alphadesign@bacevalley.com



- Scrape and completely paint stucco areas shown hatched.
- Temporarily remove sign over door to paint wood header. Replace same sign after painting wood behind sign.
- Scrape, prime, paint exterior of metal door and frame.
- Scrape and paint steel railing and mesh at ramp and basement steps.
- Scrape and repaint blue and white pavement markings and parking bumper at accessible parking space. Leave reflective tape.
- Sand wood sills at these two windows to make the weathered sills less weathered before painting.
- Sand and paint interior and exterior surfaces of white exterior door frame.
- Scrape and patch paint outside of wood and steel bars above exterior stairs to basement (not shown). Clean debris from bottom of stairs. Clean this window glass. No other work required at basement stairs.
- Scrape and re-weld failed welds between steel posts and embedded sleeves at railing posts near back door, ramp, and steps. Steel work at railing is part of Alternate Bid #1. Painting at steel railing is included in the Base Bid.
- Scrape and paint outside of windows not shown in window wells. 3 at west wall and 1 at east wall. Remove, scrape, and paint steel grates over window wells then replace. Provide hoist if needed for grate removal. Clean window wells of debris.
- Remove obsolete cable from face of exterior wall.
- See south elevation regarding flagpole painting.

**WEST ELEVATION**

**EXTERIOR PAINT  
 ARTHUR JOHNSON MEMORIAL LIBRARY  
 RATON, NEW MEXICO**

DATE 8-9-24

SHEET NUMBER  
**2**