

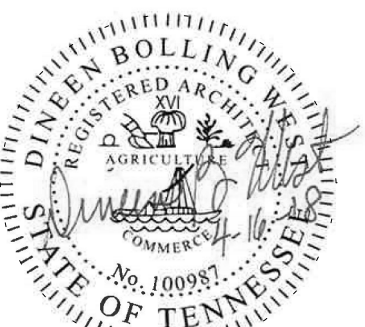
MATERIALS KEYING LEGEND

GENERAL GLAZING NOTES

- A. PROVIDE 1/2" INSULATED GLASS WITH LOW E CLEAR COATING FOR TYPICAL EXTERIOR GLASS, U.N.O.
- B. PROVIDE CLEAR FLOAT GLASS FOR TYPICAL INTERIOR GLASS U.N.O.
- C. SEE FLOOR PLANS FOR DOOR AND FRAME LOCATIONS.
- D. OVERALL HORIZONTAL AND VERTICAL FRAME DIMENSIONS ARE TO MASONRY OPENINGS.
- E. ALL LABELED DOORS SHALL BE GLAZED WITH SAFETY FIRE-RATED GLASS, U.N.O.
- F. VIEW LIGHTS IN ALL NON-LABELED DOORS SHALL BE TEMPERED GLASS, U.N.O.
- G. ALL INTERIOR WINDOWS SHALL BE GLAZED WITH TEMPERED GLASS U.N.O.
- H. CONTRACTOR SHALL LEAVE ALL STICKERS ON GLASS IN THE WINDOWS FOR THE PROJECT UNTIL OSF HAS INSPECTED THE JOB.
- I. BLINDS SHALL NOT BE LOCATED WHERE OPERABLE EGRESS WINDOWS ARE INDICATED.
- J. PROVIDE FIRE RATED GLASS WHERE DOOR LOCATED IN FIRE RATED WALL.
- K. SEE DOOR SCHEDULE FOR APPLICABLE DOOR TYPES.

SHEET NOTES

- 1. AT GYM D201, ALL GLAZING OF THIS ASSEMBLY SHALL BE LABELED IN ACCORDANCE WITH IBC 2408.3 WHICH INDICATES GLAZING AT SUCH SPACE IS REQUIRED TO MEET CATEGORY II OF THE U.S. CONSUMER PRODUCTS SAFETY COMMISSION'S FEDERAL SAFETY REGULATION, SAFETY STANDARD FOR ARCHITECTURAL GLAZING MATERIALS, CODIFIED AT 16 CFR PART 1201.



MEMBERS OF THE AMERICAN INSTITUTE OF ARCHITECTS

COPYRIGHT 2018 ALL RIGHTS RESERVED
PRINTED OR ELECTRONIC DRAWINGS AND DOCUMENTATION MAY NOT BE REPRODUCED IN ANY FORM WITHOUT WRITTEN PERMISSION FROM LS3P ASSOCIATES LTD.

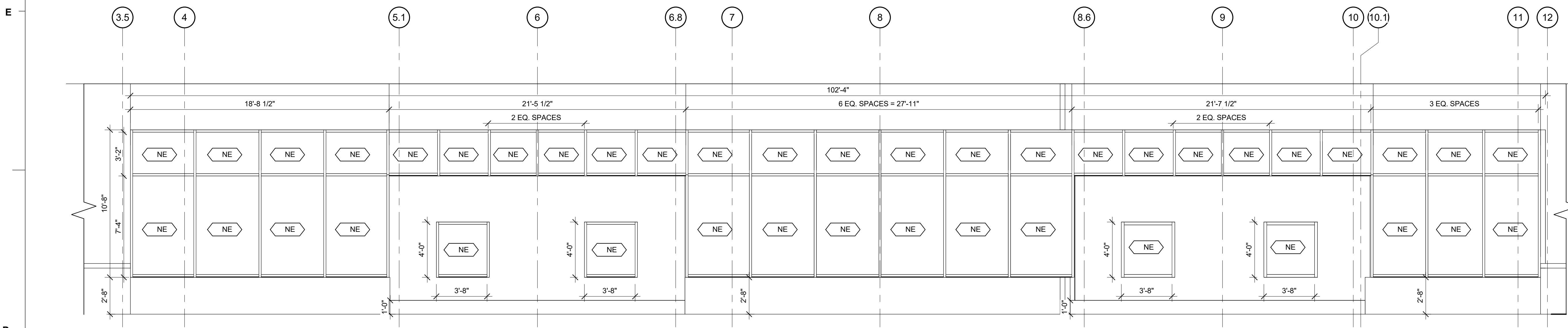
REVISIONS:

No.	Description	Date
-----	-------------	------

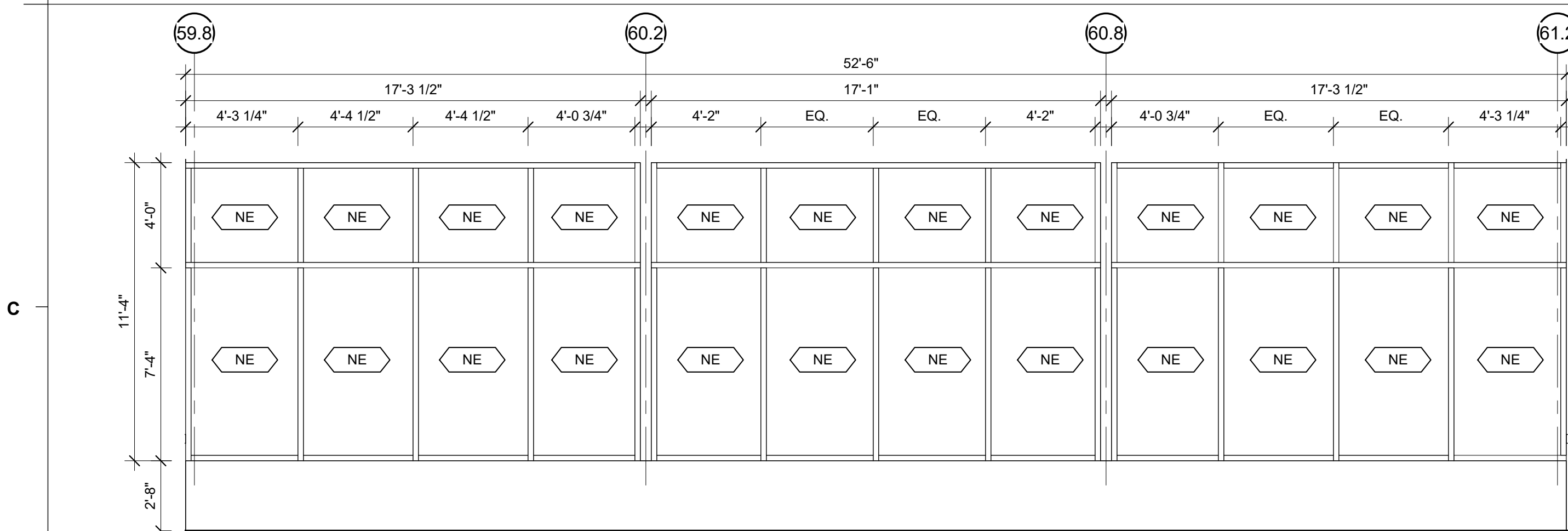
PROJECT: 2201-169090
DATE: MAY 25, 2018
DRAWN BY: Author
CHECKED BY: Checker

ALUMN. EXT. STOREFRONT ELEVATIONS

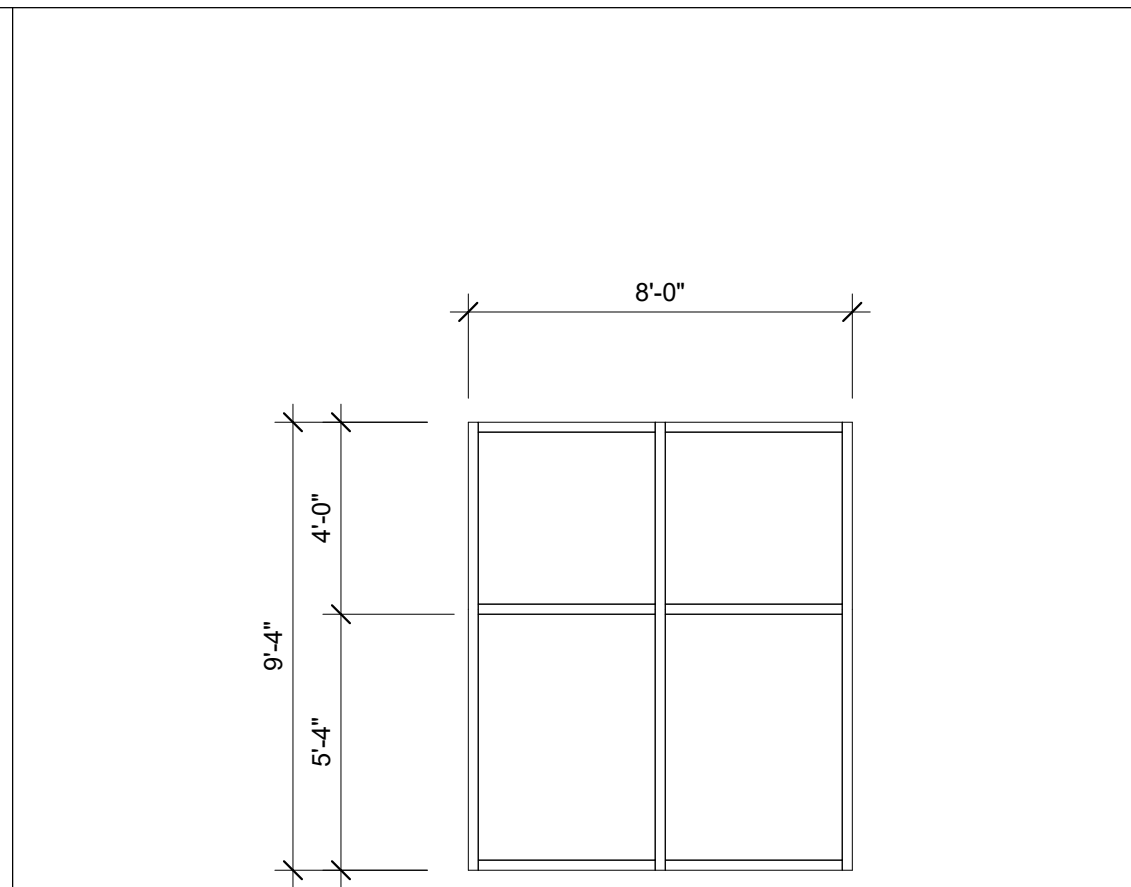
A-610



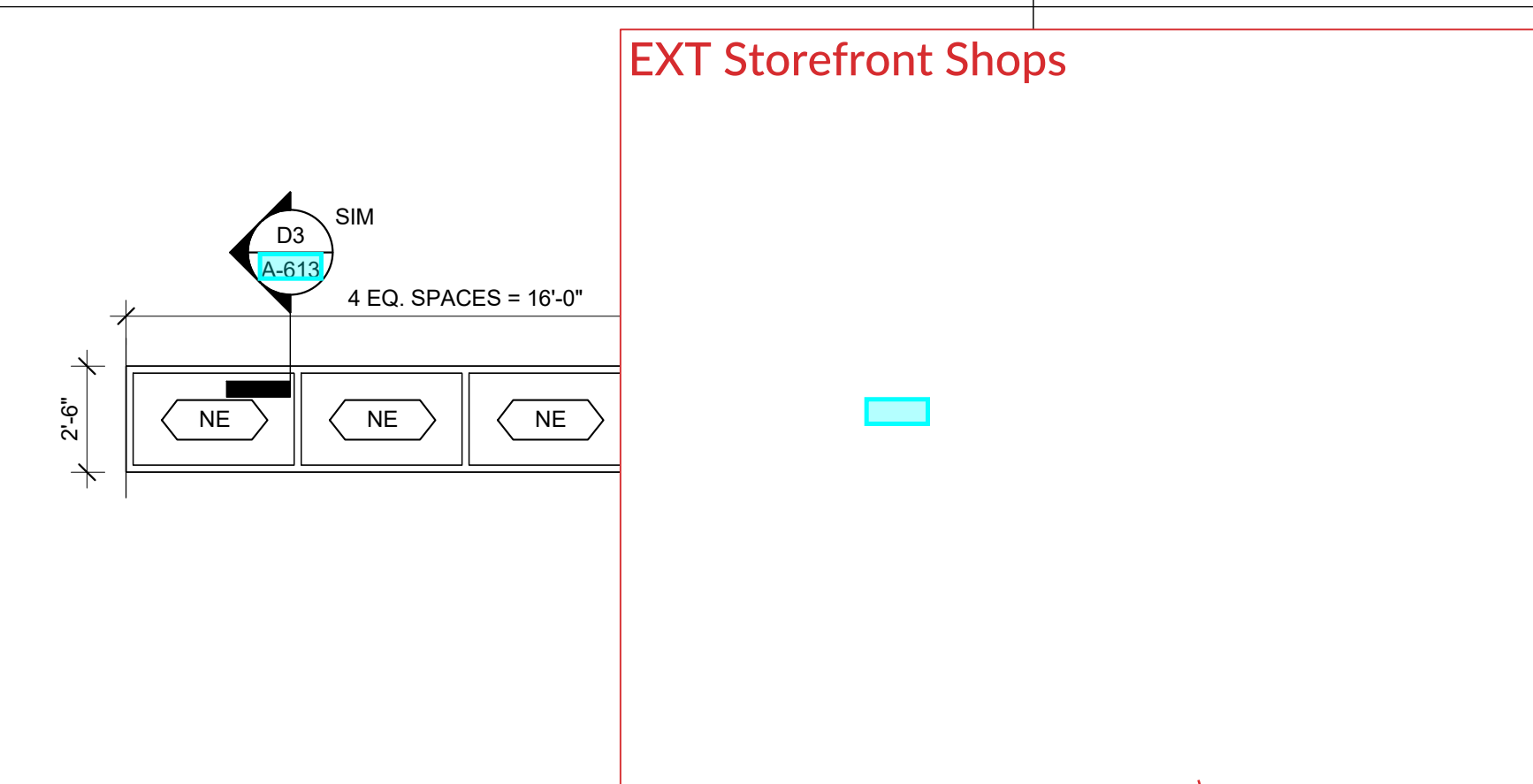
D1 EXT STOREFRONT @ FRONT ENTRY SOUTH
1/4" = 1'-0"



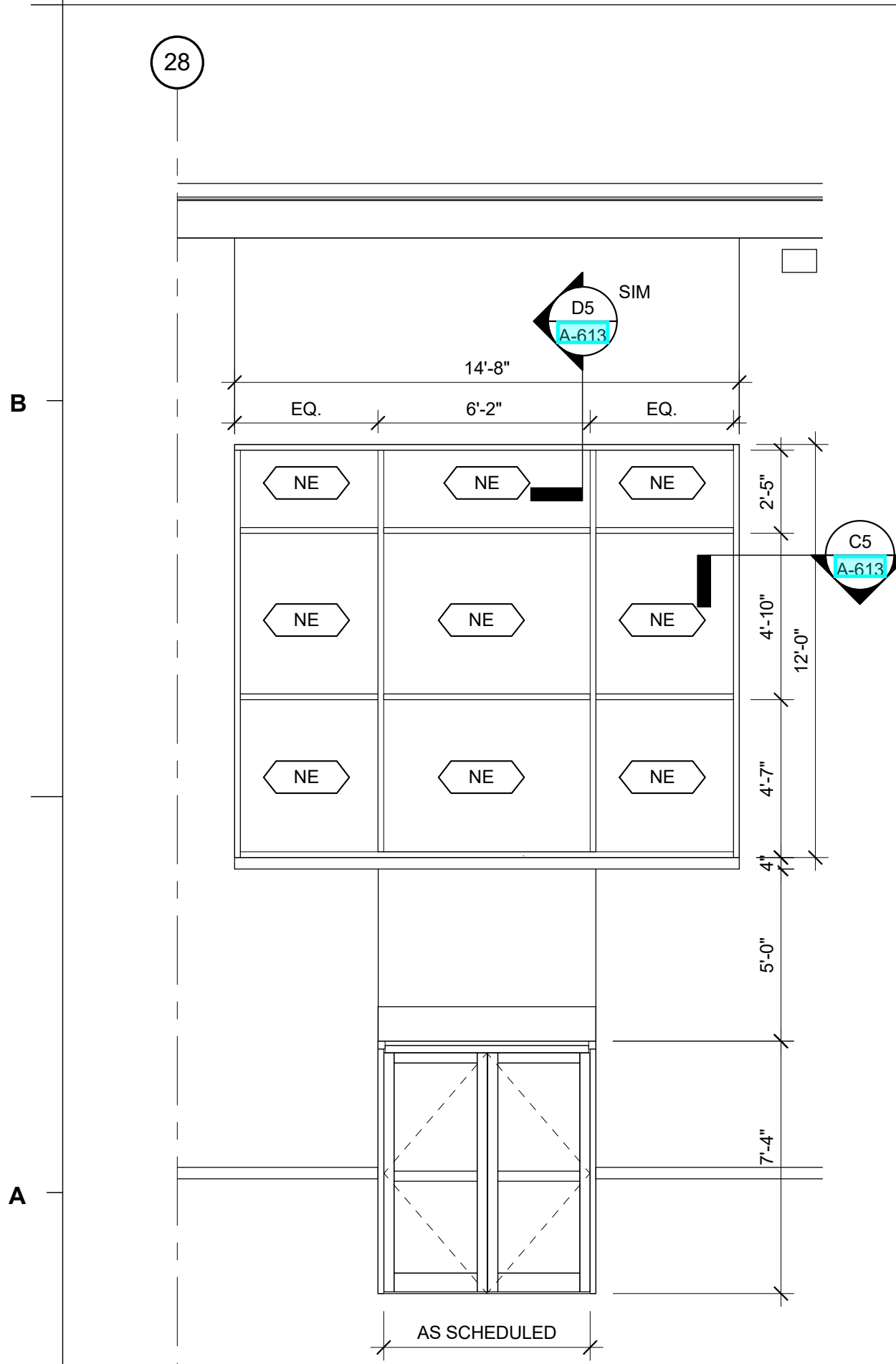
C1 EXT STOREFRONT @ AUDITORIUM ENTRANCE
1/4" = 1'-0"



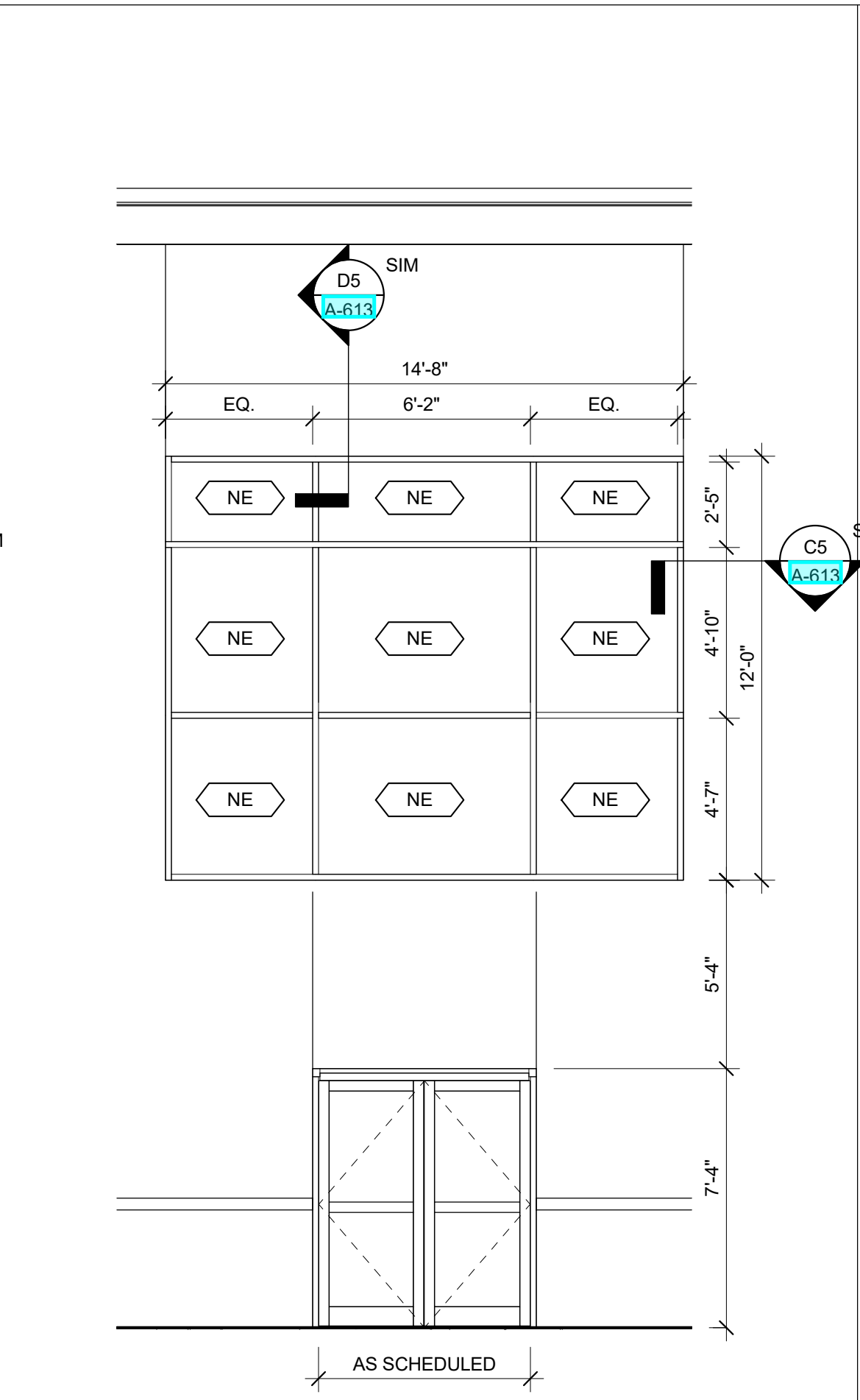
C4 EXT STOREFRONT @ END OF CORRIDOR
1/4" = 1'-0"



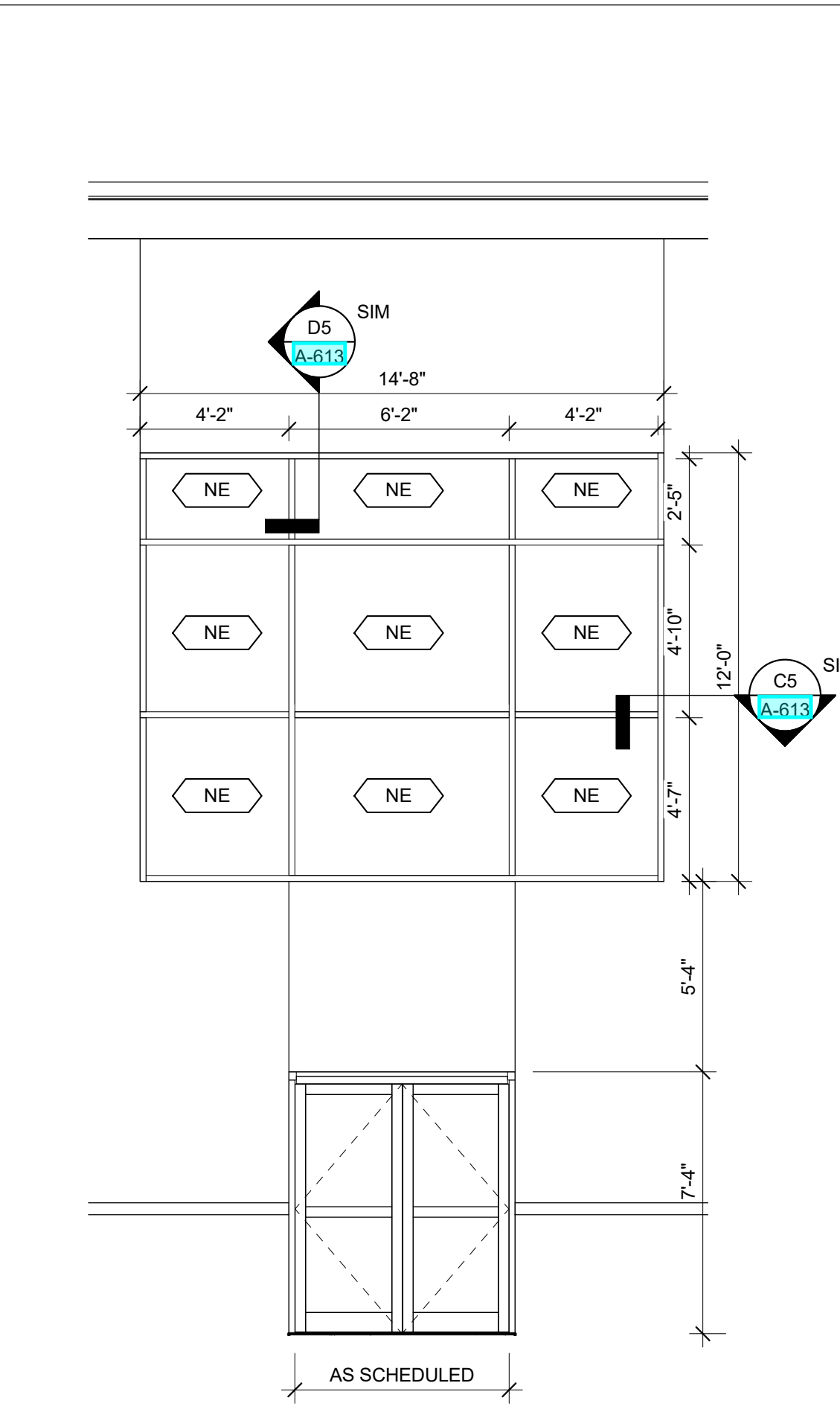
C5 EXT STOREFRONT @ SCIENCE LABS
1/4" = 1'-0"



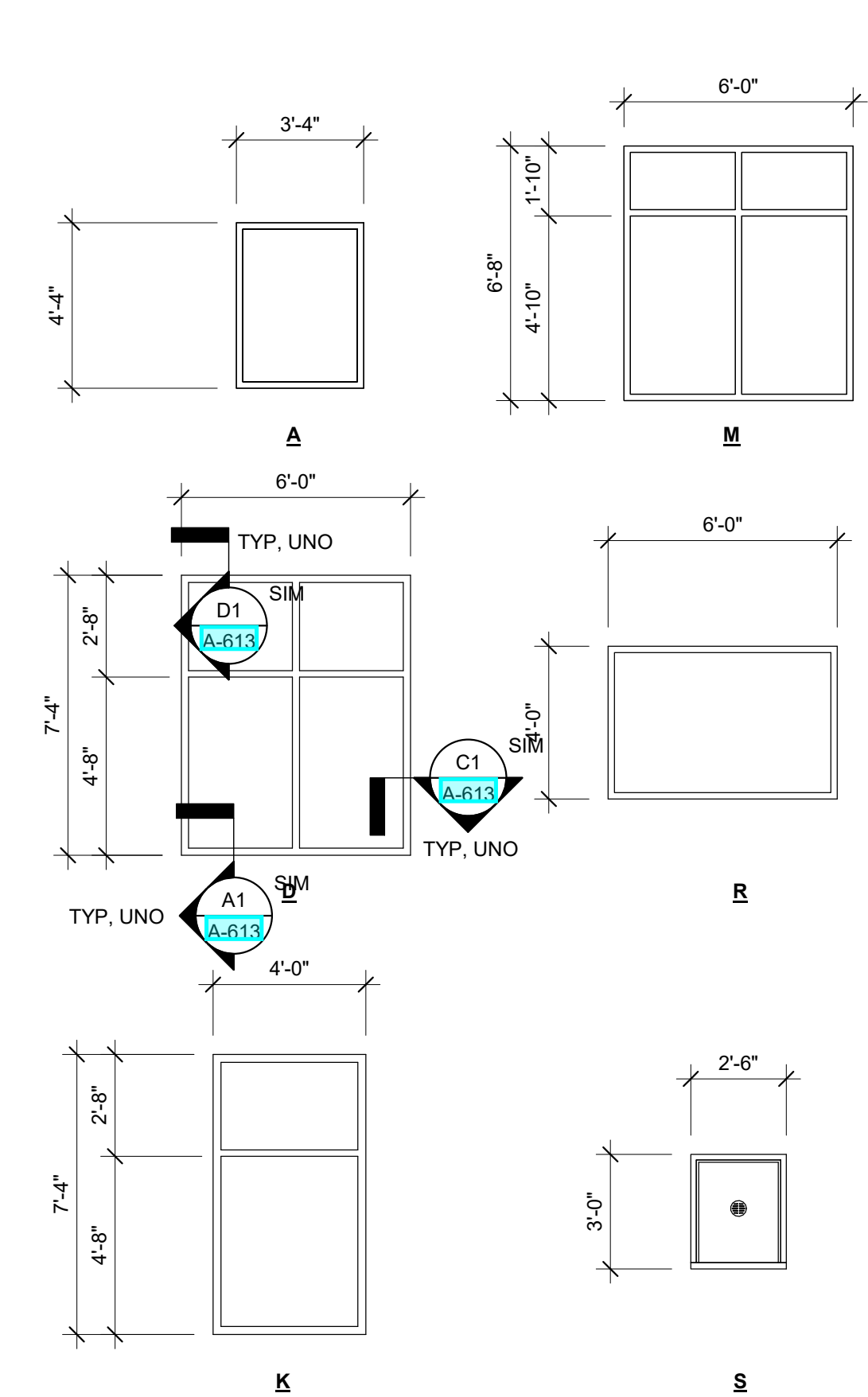
A1 EXT STOREFRONT @ STAIR S100
1/4" = 1'-0"



A3 EXT STOREFRONT @ STAIR S103
1/4" = 1'-0"

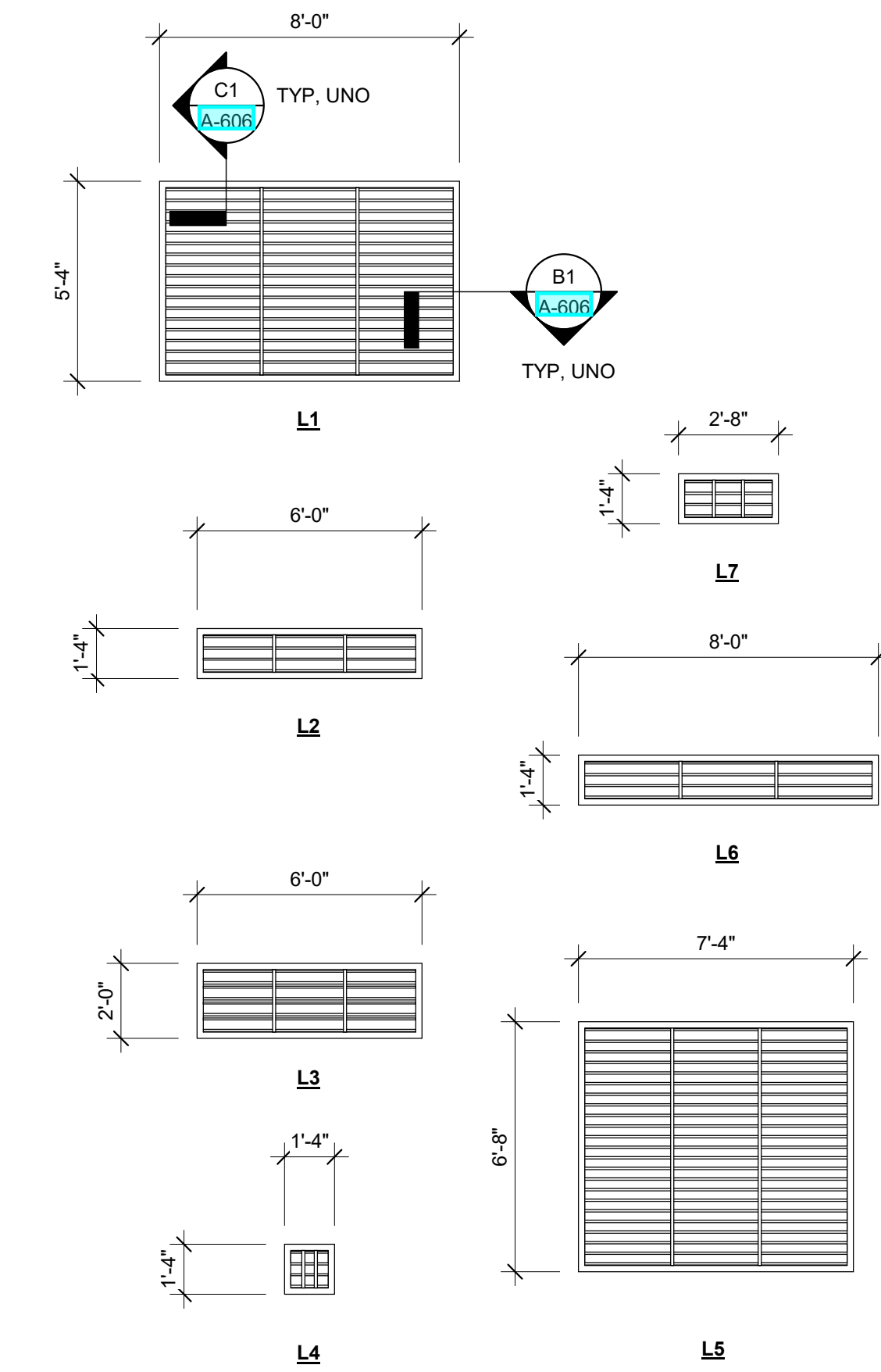


A4 EXT STOREFRONT @ STAIR S106
1/4" = 1'-0"



WINDOWS

WINDOW AND LOUVERS
1/4" = 1'-0"



EXTERIOR LOUVERS



LEGEND

- REL OPAQUE
- CLEAR
- REL CLEAR

S 084113-1.0