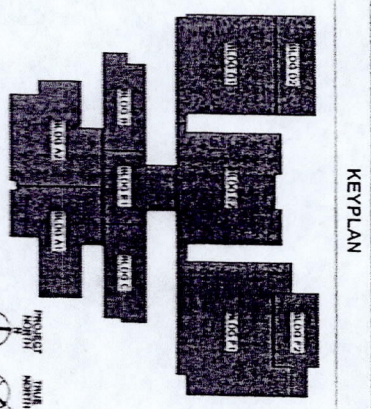
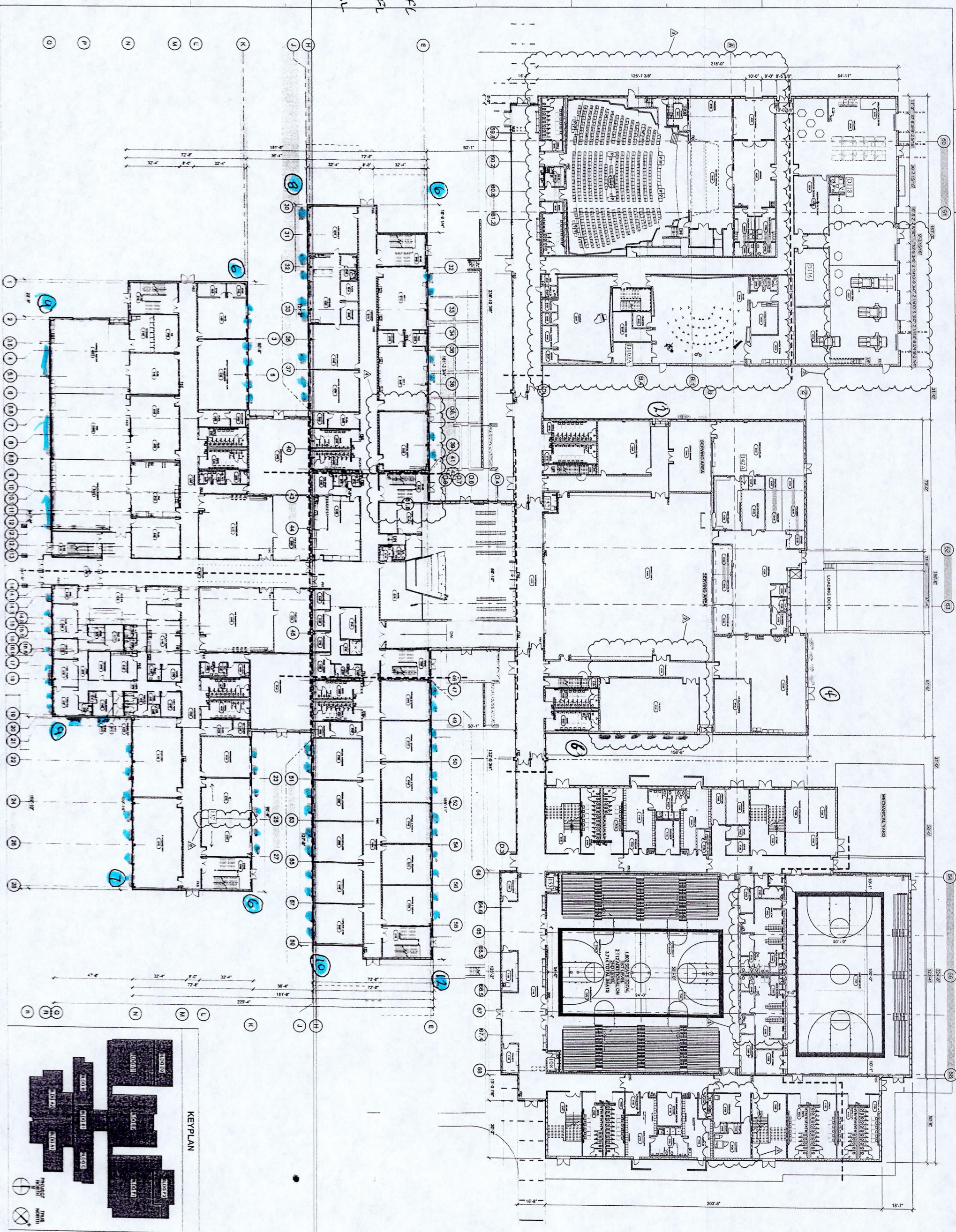


2686946
 2686946
 85
 69
 154 TOTAL



REVISIONS:

No.	Description	Date
1	ADD ROOMS	05/27/08
2	ADD ROOMS	05/28/08
3	ADD ROOMS	05/28/08
4	ADD ROOMS	05/28/08
5	ADD ROOMS	05/28/08

COPYRIGHT 2018 ALL RIGHTS RESERVED
 PRINTED OR ELECTRONIC DRAWING AND
 MAY BE FORWARDED WITHOUT PERMISSION
 FROM LSP ASSOCIATES LTD.



701 A LADY STREET 2001
 COLUMBIANA, TN 38506
 TEL: 661.262.2419 FAX: 661.262.2418
 WWW.LSP.COM

LSP

Gain Rash West
 ARCHITECT

SULLIVAN COUNTY SCHOOLS
 WEST RIDGE HIGH SCHOOL

PROJECT: 3511-1804
 DATE: MAY 21, 2018
 DRAWN BY: JMC
 CHECKED BY: AMT
 DESIGNER: STEVEN THORNTON

OVERALL FIRST FLOOR PLAN

A-011



MEMBER OF THE AMERICAN INSTITUTE OF ARCHITECTS
COPYRIGHT 2012. ALL RIGHTS RESERVED.
PRINTED ON ELECTRONIC DRAWINGS AND
DOCUMENTATION MAY NOT BE REPRODUCED
FROM LSP ASSOCIATES LTD.

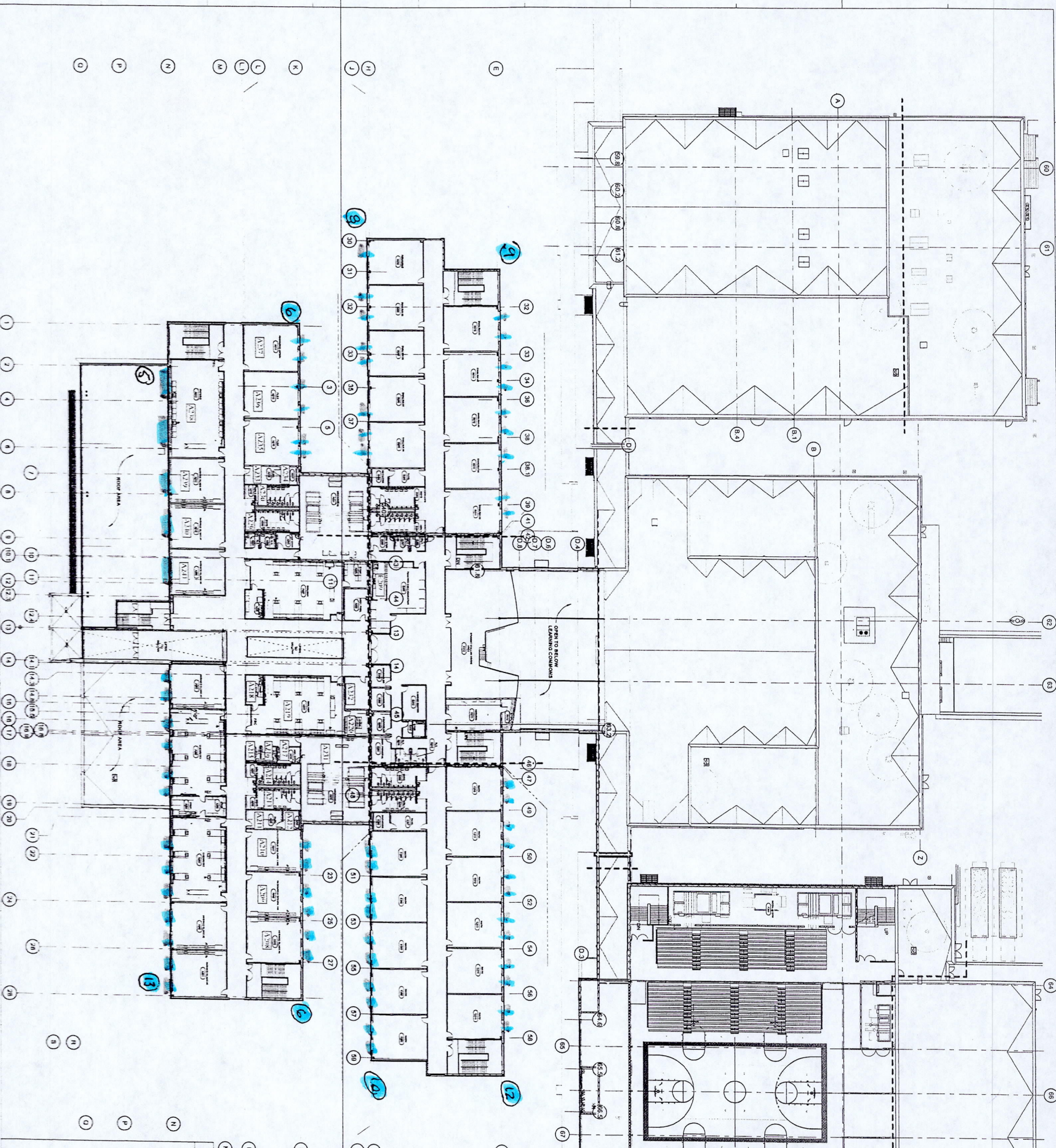
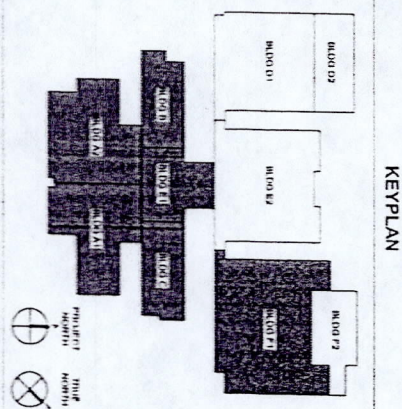
REVISIONS:

No.	Description	Date

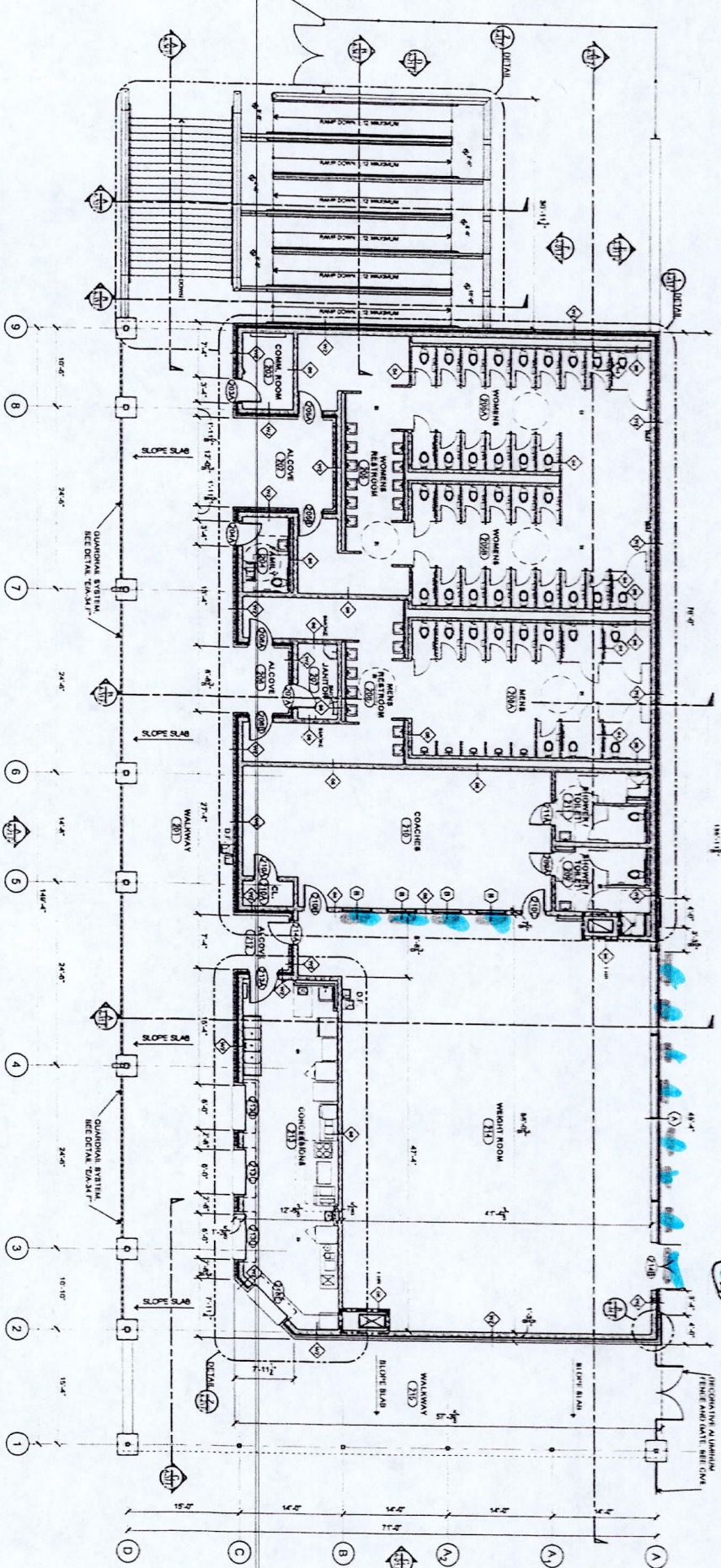
PROJECT: 2201-180008
DATE: MAY 24, 2018
DRAWN BY: JML
CHECKED BY: AMT

OVERALL SECOND FLOOR PLAN

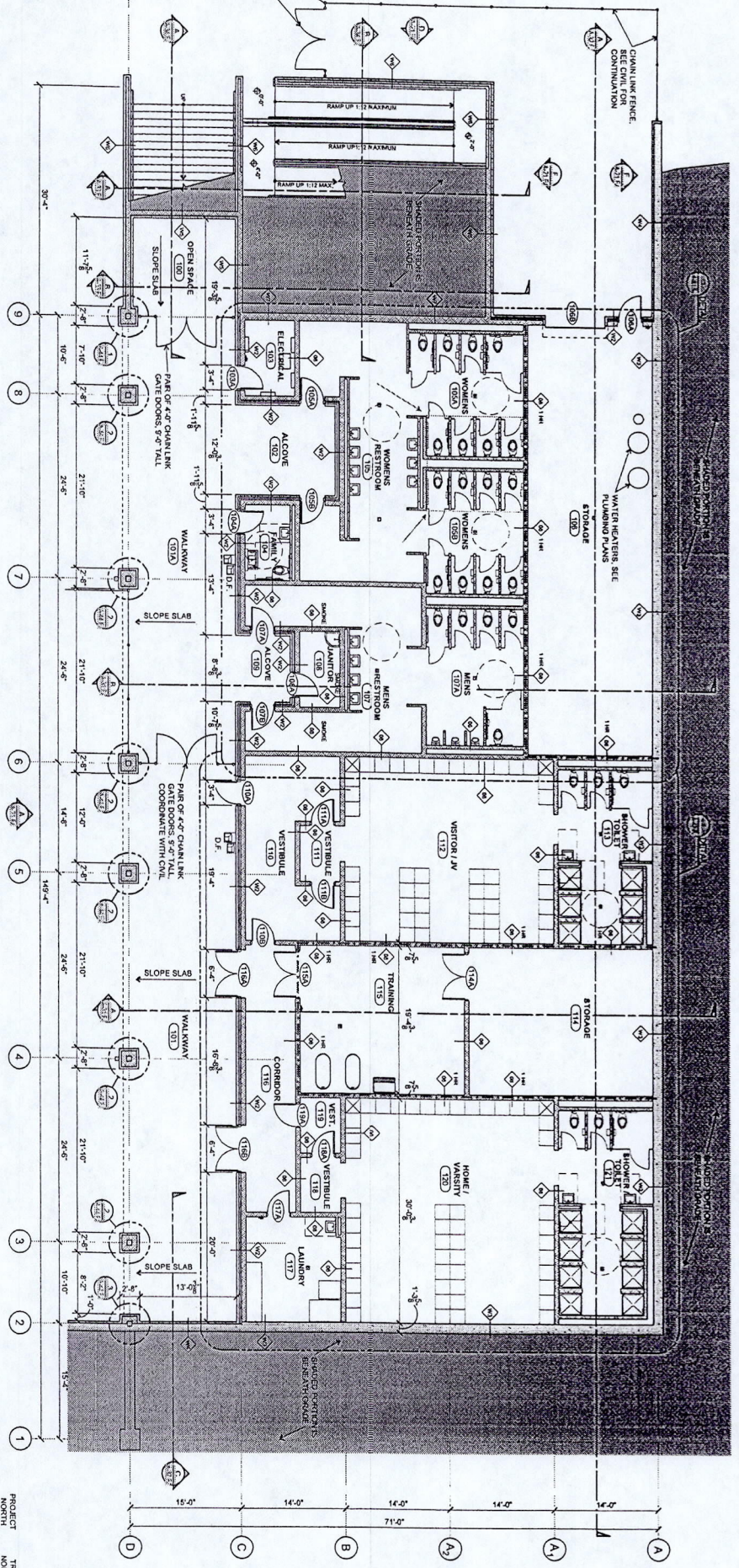
A-012



9 8 6 5 12 10 6 13 69



2 SECOND FLOOR PLAN
1/8\"/>



1 FIRST FLOOR PLAN
1/8\"/>

FLOOR PLAN SHEET NOTES

1. EXISTING DIMENSIONS AT VERTICAL VIEWS ARE TO FACE OF BARRELS.
2. PARTITION DIMENSIONS ARE TO FACE OF FINISH FACE OF BRICK.
3. PARTITION DIMENSIONS ARE TO FACE OF FINISH FACE OF BRICK.
4. ALL WALLS ARE TO BE CONCRETE TO THE TOP OF BRICK.
5. SEE SHEET A-11.1 FOR CONSTRUCTION DETAILS FOR PARTITION WALLS.
6. SEE SHEET A-11.1 FOR CONSTRUCTION DETAILS FOR PARTITION WALLS.
7. SEE SHEET A-11.1 FOR CONSTRUCTION DETAILS FOR PARTITION WALLS.
8. SEE SHEET A-11.1 FOR CONSTRUCTION DETAILS FOR PARTITION WALLS.
9. SEE SHEET A-11.1 FOR CONSTRUCTION DETAILS FOR PARTITION WALLS.
10. SEE SHEET A-11.1 FOR CONSTRUCTION DETAILS FOR PARTITION WALLS.
11. SEE SHEET A-11.1 FOR CONSTRUCTION DETAILS FOR PARTITION WALLS.
12. SEE SHEET A-11.1 FOR CONSTRUCTION DETAILS FOR PARTITION WALLS.

PARTITION NOTES

1. ALL NEW AND EXISTING PARTITION WALLS SHALL BE CONCRETE TO THE TOP OF BRICK.
2. CONSTRUCTION SHALL BE IN ACCORDANCE WITH THE ARCHITECTURAL CONTRACT DOCUMENTS.
3. CONSTRUCTION SHALL BE IN ACCORDANCE WITH THE ARCHITECTURAL CONTRACT DOCUMENTS.
4. CONSTRUCTION SHALL BE IN ACCORDANCE WITH THE ARCHITECTURAL CONTRACT DOCUMENTS.
5. CONSTRUCTION SHALL BE IN ACCORDANCE WITH THE ARCHITECTURAL CONTRACT DOCUMENTS.
6. CONSTRUCTION SHALL BE IN ACCORDANCE WITH THE ARCHITECTURAL CONTRACT DOCUMENTS.
7. CONSTRUCTION SHALL BE IN ACCORDANCE WITH THE ARCHITECTURAL CONTRACT DOCUMENTS.
8. CONSTRUCTION SHALL BE IN ACCORDANCE WITH THE ARCHITECTURAL CONTRACT DOCUMENTS.
9. CONSTRUCTION SHALL BE IN ACCORDANCE WITH THE ARCHITECTURAL CONTRACT DOCUMENTS.
10. CONSTRUCTION SHALL BE IN ACCORDANCE WITH THE ARCHITECTURAL CONTRACT DOCUMENTS.
11. CONSTRUCTION SHALL BE IN ACCORDANCE WITH THE ARCHITECTURAL CONTRACT DOCUMENTS.
12. CONSTRUCTION SHALL BE IN ACCORDANCE WITH THE ARCHITECTURAL CONTRACT DOCUMENTS.

PARTITION LEGEND

- 1. 1/2\"/>

MILLIKEN COUNTY
WEST RIDGE
HIGH SCHOOL
ATHLETIC
BUILDINGS



LSP

701 N. LAY STREET
COLUMBIANA, MISSISSIPPI 39016
TEL: 601.924.2414 FAX: 601.924.2414
WWW.LSP.COM



MEMBER OF THE AMERICAN INSTITUTE OF ARCHITECTS
COPYRIGHT © 2018 ALL RIGHTS RESERVED
PRINTED ON ELECTRONIC DRAWINGS AND
IN ANY FORM WITHOUT WRITTEN PERMISSION
FROM LSP ASSOCIATES LTD.

REVISIONS:

No.	Description	Date
1	ISSUED FOR PERMIT	05-31-18

PROJECT: 200-18090
DATE: June 1, 2018
DRAWN BY: STONE
CHECKED BY: JOHN

FLOOR PLANS -
FIELD HOUSE

A-11.F