

**NEW BUILDING DESCRIPTION**

OCCUPANCY GROUP: E  
CONSTRUCTION TYPE: V, N  
HEIGHT: ±13'-0"  
AREA: 1200 sq. FT.

**LOCAL FIRE AUTHORITY**

ACCESS ROAD & GATE ENTRANCE APPROVAL

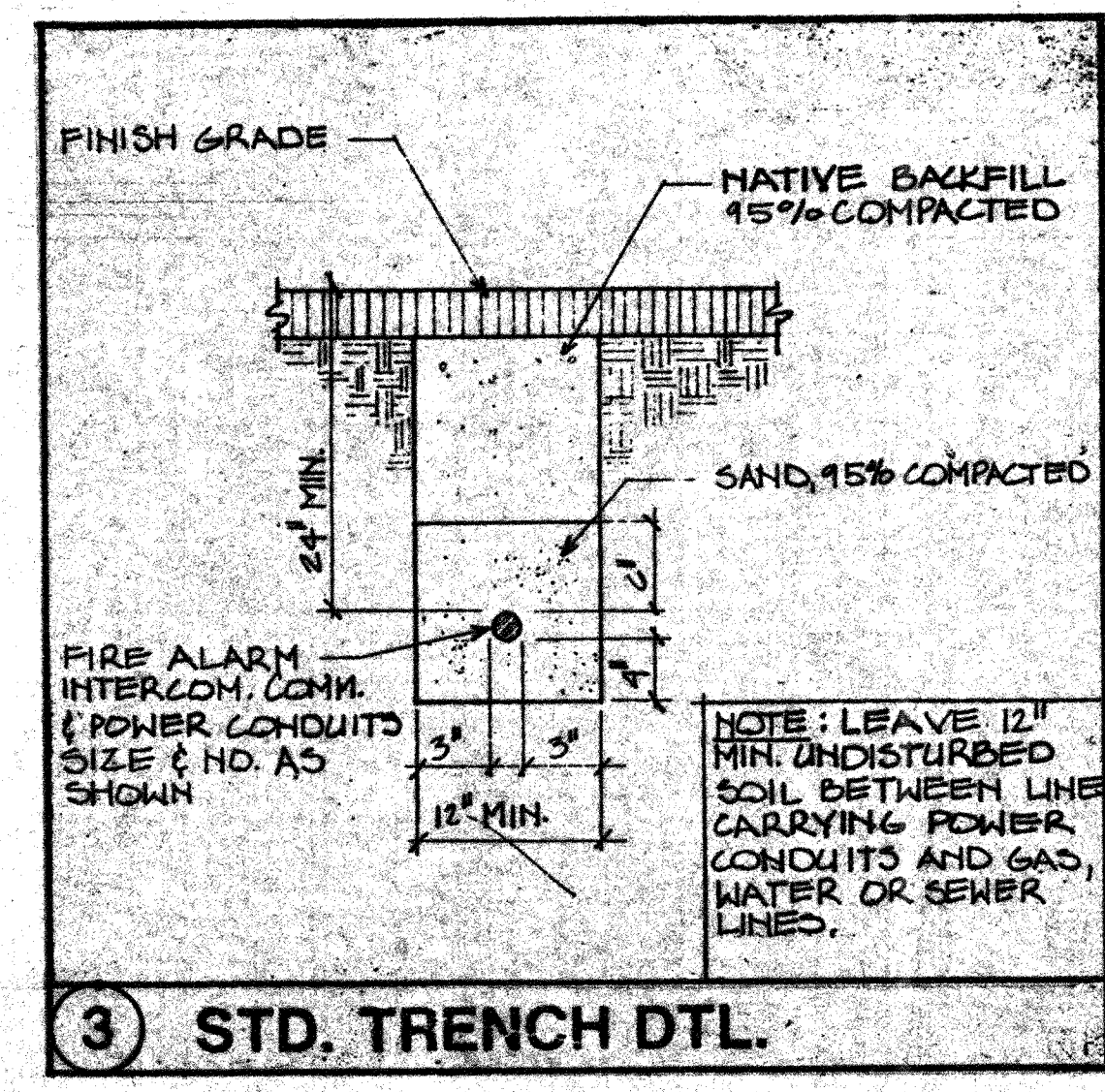
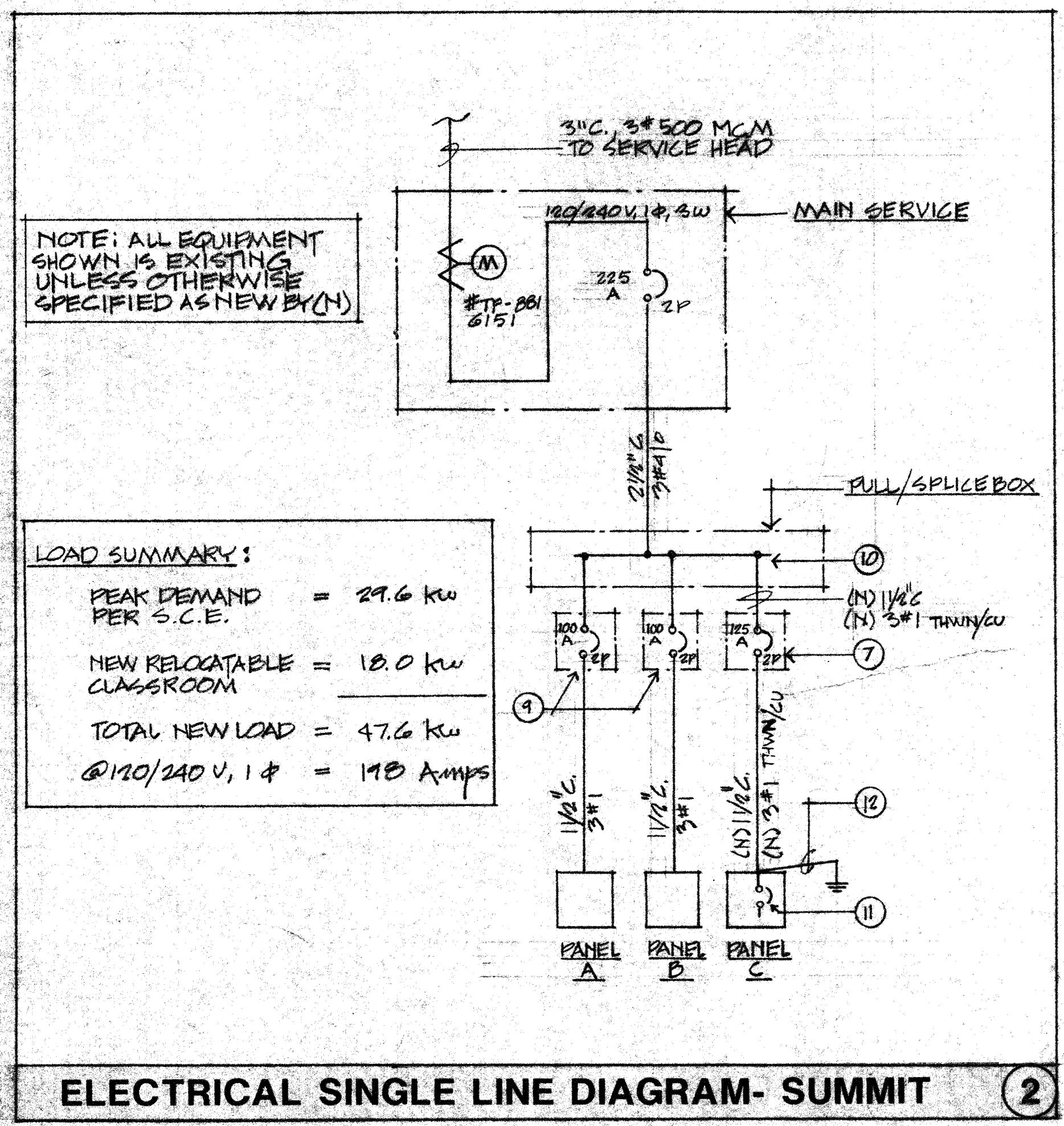
Local Fire Authority: Ventura County Fire Department  
Address: 395 Willis Avenue  
Camarillo, California 93010  
City/State/Zip: Camarillo, California 93010  
Approval Issued By: [Signature] Rank/Title: [Signature]  
Date: 1/28/89 Phone Number: (805) 388-2529

**NOTES**

**ELECTRICAL NOTES**

- (B) service size: 225 Amp, 120/240 volt, 1Ø, 3W mounted in weatherproof enclosure, w/225 Amp main switch, see (2)
- (B) 18" x 12" x 4" pull/splice box, make (N) tap as required for (N) feeder, see (2)
- (B) panel A = (B) portable classroom  
(B) panel B = (B) portable classroom  
(N) panel C = (N) portable classroom. Provide (N) nema 3Ø power pull box on classroom exterior for (N) feeder
- (B) 2 1/2", (B) 3" 4/0
- Provide (N) wall MTD 125 A, 2p, 250 volt circuit breaker in nema 3Ø enclosure, enclosure to be lockable type, mount (N) circuit breaker adjacent to (B) pull/splice box, see (2)
- (N) 1 1/2", (N) 3" 1 thwn/cu, see (2)
- Existing 100A, 2p, wall MTD circuit breaker  
Make (N) tap = (B) pull/splice box for (N) 125 A feeder
- Provide (N) panel "C" w/125Amp, 2p, 250Volt main circuit breaker
- Run 1/2" & 1" 6 cu ground conductor to the following:  
1. Buried 5/8" x 8" copper clad ground rod  
2. Metallic cold water pipe  
3. Building structural steel  
Make all req'd ground connections per N.E.C. Article 250
- (B) F.A. pull station
- Provide (N) manual F.A. pull station = interior classroom exit and provide (N) F.A. bell = classroom. Make all conduit and wiring connections as req'd  
Manual Station: Simplex No. 2099-9201  
S.F.M. No. 7150-026-11  
Bells: Simplex No. 2901-9002  
S.F.M. No. 7135-026-138  
Verify that (N) F.A. components are compatible w/(B) F.A. system prior to installation
- Run (N) 3/4" & #14 F.A. conductors as req'd to tie into (B) F.A. system = (B) relocatable classroom, verify exact connection point in field, provide all req'd conduits, conductors & boxes as req'd for complete installation

1 PLOT PLAN - SUMMIT



State Fire Marshal

O.S.A.

Access Compliance

Project Title: NEW MODULAR CLASSROOM BUILDINGS SUMMIT MIRA MEINERS OAKS TOPA MONTA

Structural Engineer: Mechanical Engineer COAST VILLAGE ENGINEERING CORP. 315 W. HALEY ST. SUITE 101 SANTA BARBARA, CA 93101

Electrical Engineer: TOLER AND ASSOCIATES G 111 CAMARILLO, CA 93010

Architect: James B. Tremaine AIA 19 E. Mission St., Suite A Santa Barbara, California 93101 805 563-1228

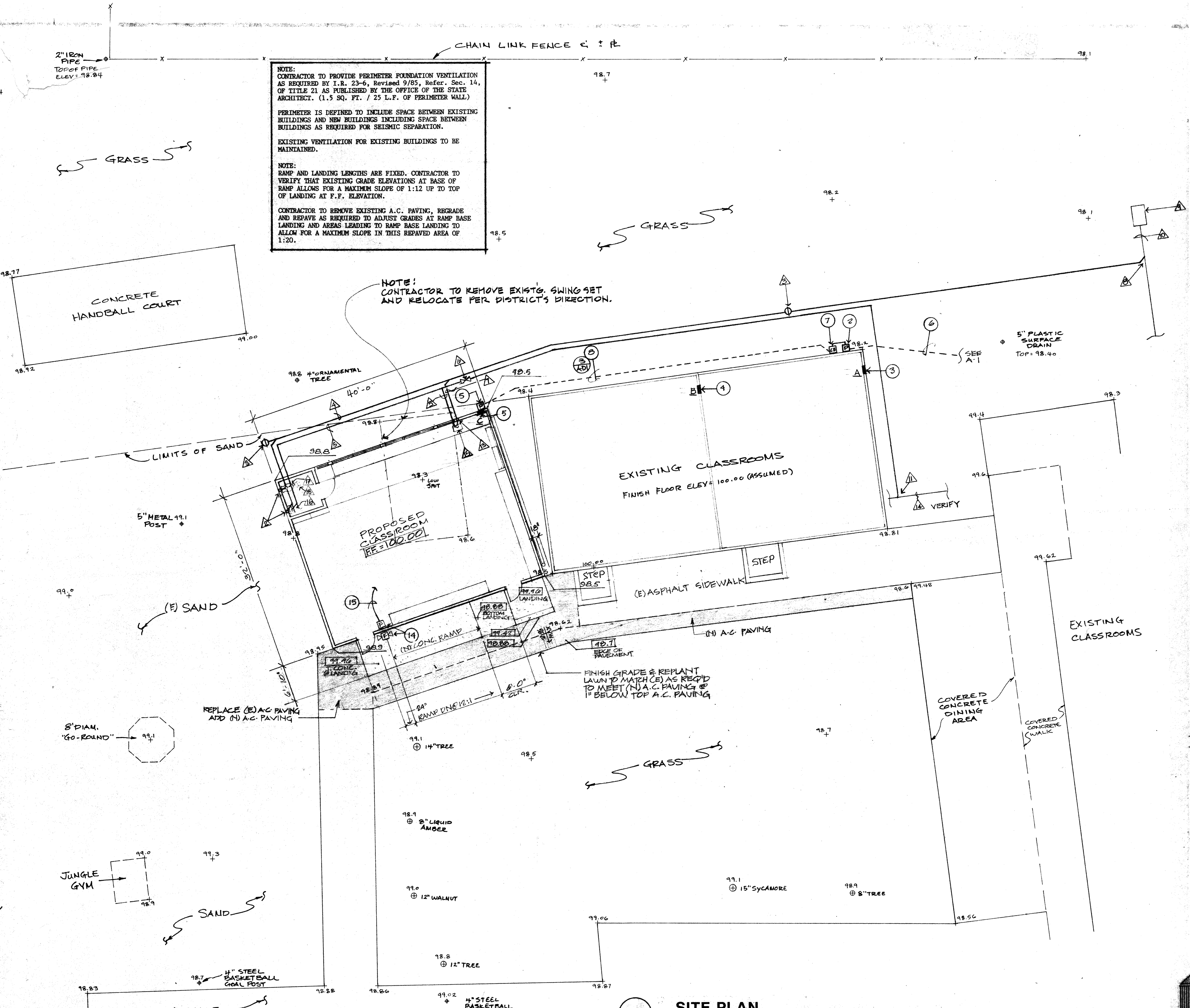
Job No. 8821 Date 2/15/89 Drawn By Revisions

Sheet No. A-D1 of Sheets

#4  
A# 52586  
1989

A# 52586, 1989





**NOTE:**  
 CONTRACTOR TO PROVIDE PERIMETER FOUNDATION VENTILATION AS REQUIRED BY I.R. 23-6, Revised 9/85, Refer. Sec. 14, OF TITLE 21 AS PUBLISHED BY THE OFFICE OF THE STATE ARCHITECT. (1.5 SQ. FT. / 25 L.F. OF PERIMETER WALL)

PERIMETER IS DEFINED TO INCLUDE SPACE BETWEEN EXISTING BUILDINGS AND NEW BUILDINGS INCLUDING SPACE BETWEEN BUILDINGS AS REQUIRED FOR SEISMIC SEPARATION.

EXISTING VENTILATION FOR EXISTING BUILDINGS TO BE MAINTAINED.

**NOTE:**  
 RAMP AND LANDING LENGTHS ARE FIXED. CONTRACTOR TO VERIFY THAT EXISTING GRADE ELEVATIONS AT BASE OF RAMP ALLOWS FOR A MAXIMUM SLOPE OF 1:12 UP TO TOP OF LANDING AT F.F. ELEVATION.

CONTRACTOR TO REMOVE EXISTING A.C. PAVING, REGRADE AND REPAVE AS REQUIRED TO ADJUST GRADES AT RAMP BASE LANDING AND AREAS LEADING TO RAMP BASE LANDING TO ALLOW FOR A MAXIMUM SLOPE IN THIS REPAVED AREA OF 1:20.

**NOTE!**  
 CONTRACTOR TO REMOVE EXISTG. SWING SET AND RELOCATE PER DISTRICT'S DIRECTION.

**NOTES**

- ELECTRICAL NOTES**
- (B) service size : 225 Amp, 120/240 volt, 1Ø, 3W mounted in weatherproof enclosure, w/225 Amp main switch, see (2)
  - (B) 18" x 12" x 4" pull/splice box, make (N) tap as required for (N) feeder, see (2)
  - (B) panel A (B) portable classroom
  - (B) panel B (B) portable classroom
  - (N) panel C (N) portable classroom. Provide (N) nema 3R power pull box on classroom exterior for (N) feeder
  - (B) 2 1/2"C., (B) 3# 4/0
  - Provide (N) wall MTD 125 A, 2p, 250 volt circuit breaker in nema 3R enclosure, enclosure to be lockable type, mount (N) circuit breaker adjacent to (B) pull/splice box, see (2)
  - (N) 1 1/2"C., (N) 3# 1 thwn/cu, see (2)
  - Existing 100A, 2p, wall MTD circuit breaker
  - Make (N) tap (B) pull/splice box for (N) 125 A feeder
  - Provide (N) panel "C" w/125Amp, 2p, 250VOLT main circuit breaker
  - Run 1/2"C. & 1#6 cu ground conductor to the following :  
 1. Burried 5/8" x 8' copper clad ground rod  
 2. Metallic cold water pipe  
 3. Building structural steel  
 Make all req'd ground connections per N.E.C. Article 250
  - (B) F.A. pull station
  - Provide (N) manual F.A. pull station (B) interior classroom exit and provide (N) F.A. bell (B) classroom. Make all conduit and wiring connections as req'd  
 Manual Station : Simplex No. 2099-9201  
 S.F.M. No. 7150-026:11  
 Bells : Simplex No. 2901-9002  
 S.F.M. No. 7135-026:138  
 Verify that (N) F.A. components are compatible w/(B) F.A. system prior to installation
  - Run (N) 3/4"C. & #14 F.A. conductors as req'd to tie into (B) F.A. system (B) relocatable classroom, verify exact connection point in field, provide all req'd conduits, conductors & boxes as req'd for complete installation

**MECHANICAL NOTES**

- Water closet : Kohler primary K 4319-BT w/K 4526-A tank & K 4686-C seat
- 2" V.T.R.
- G.C.O.
- 3" waste line
- 3/4" C.W.
- S.O.V.
- 2" waste line
- Connect to (B) 3" W at septic tank
- Exist'g septic tank (approximate location only)
- Exist'g waste line
- Connect to (B) 3/4" C.W. supply
- 2" V.T.R.
- 1 1/2" V.T.R.
- (B) C.W. - To verify
- Sink : Commercial enameling cat. No. 710, 30" x 20" x 6" W/ Moen International Faucet Model No. 50721.
- Lav. : AM. SDT. 0355.012 W/MOEN 50721
- Water closet : Kohler primary K 4319-BT w/K4526-4 tank & K4686-C seat
- Exh. fan - switch with light

State Fire Marshal

O.S.A.

Access Compliance

Project Title  
**NEW MODULAR CLASSROOM BUILDINGS**  
**MIRA MEINERS SUMMIT**  
**TOPA TOPA MONTE OAKS**

918 MTN. VIEW AVE. 1216 LOMA DR. 400 S. LOMITA AVE.  
 SANTA PAULA, CALIF. 93023 OJAI, CA. 93023 OJAI, CA. 93023

Prepared For  
 OJAI UNIFIED SCHOOL DISTRICT  
 414 E. OJAI AVE.  
 OJAI, CA. 93023

Structural Engineer  
 Mechanical Engineer  
 COAST VILLAGE ENGINEERING CORP.  
 517 SUITE 101  
 SANTA BARBARA, CA. 93101

Electrical Engineer  
 TOLER AND ASSOCIATES  
 1115 AVENIDA ACASO SUITE G  
 CAMARILLO, CA. 93010

James B. Tremaine AIA  
 Architecture  
 19 E. Mission St., Suite A  
 Santa Barbara, California 93101  
 805 563-1228

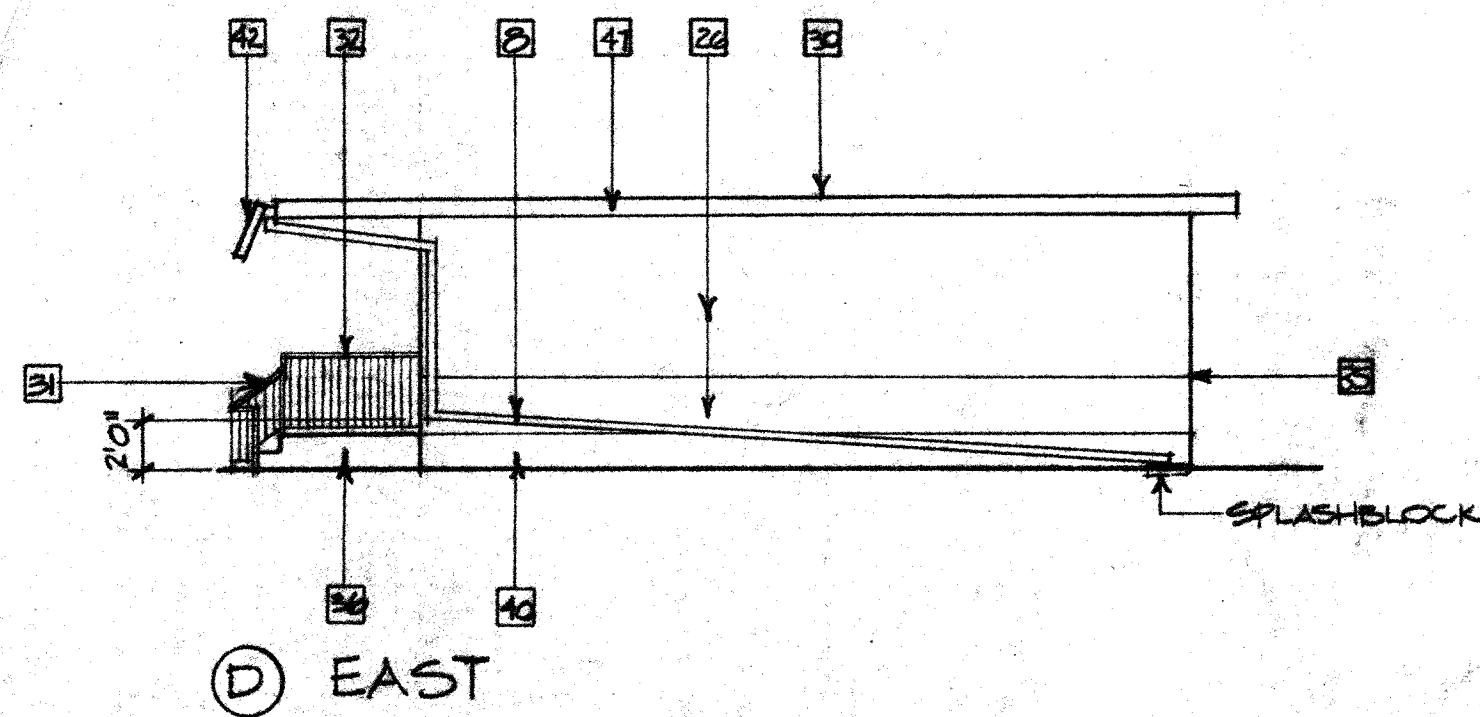
Job No. 8621  
 Date 2/15/89  
 Drawn By  
 Revisions

Sheet No.  
**A-D2**  
 of Sheets

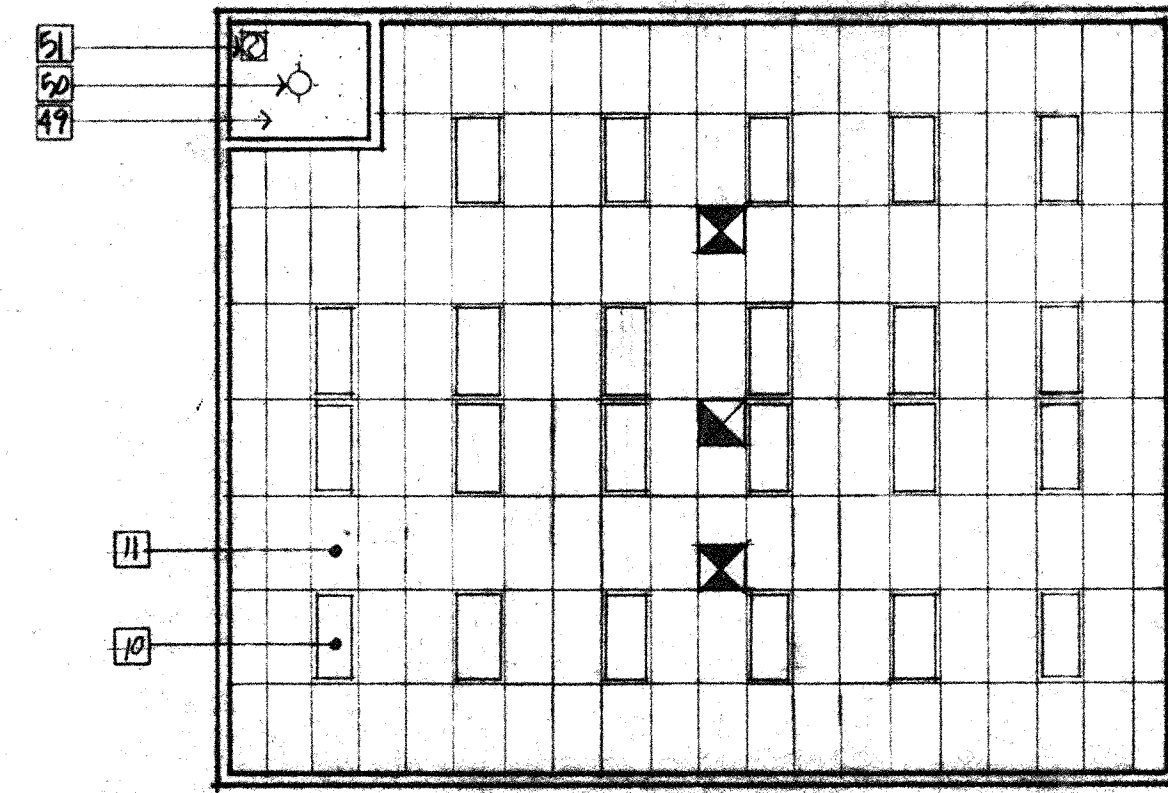
**1 SITE PLAN**

1/8"=1'-0"





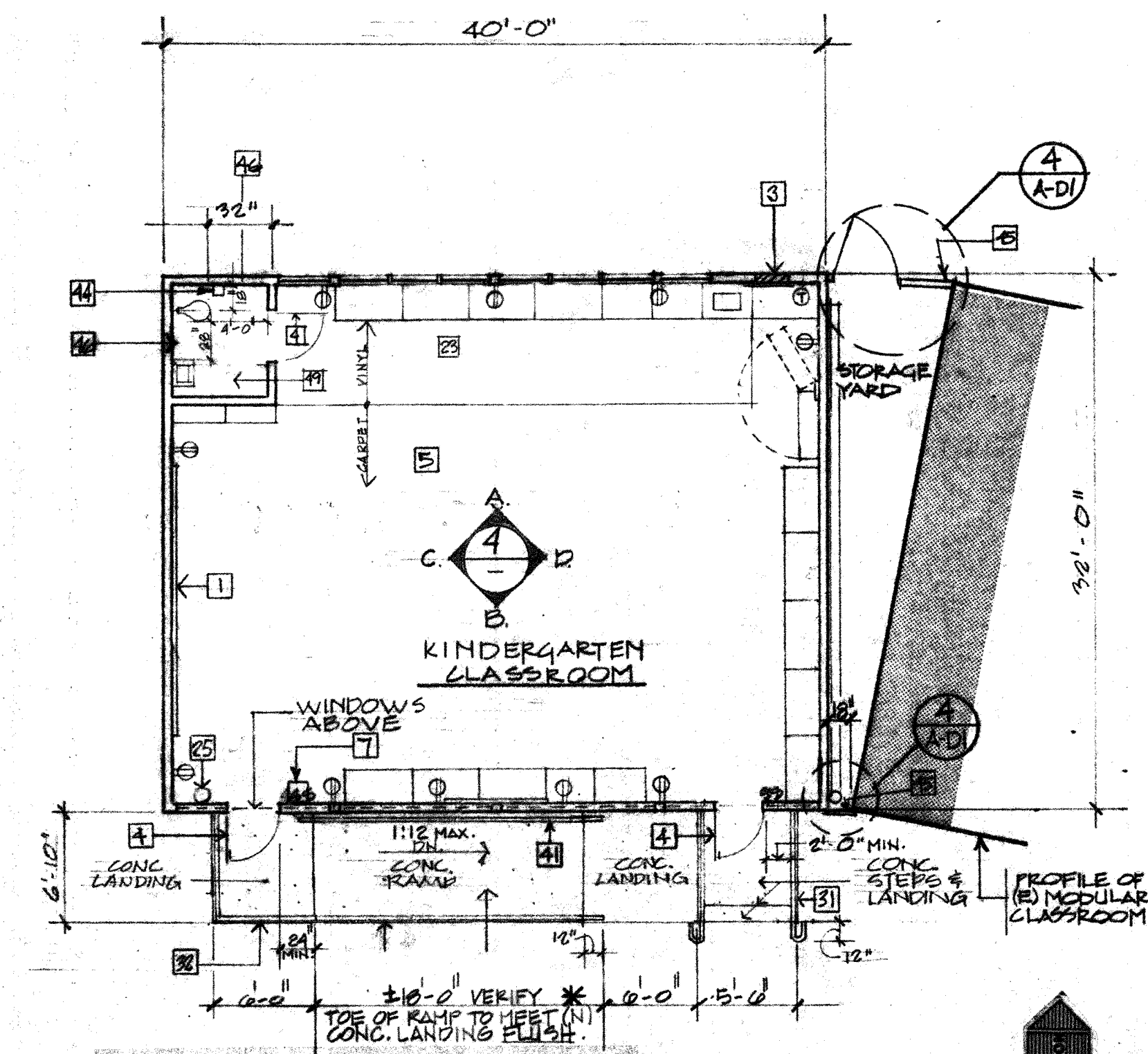
5 EXTERIOR ELEVATION-SUMMIT  
1/8"=1'-0"



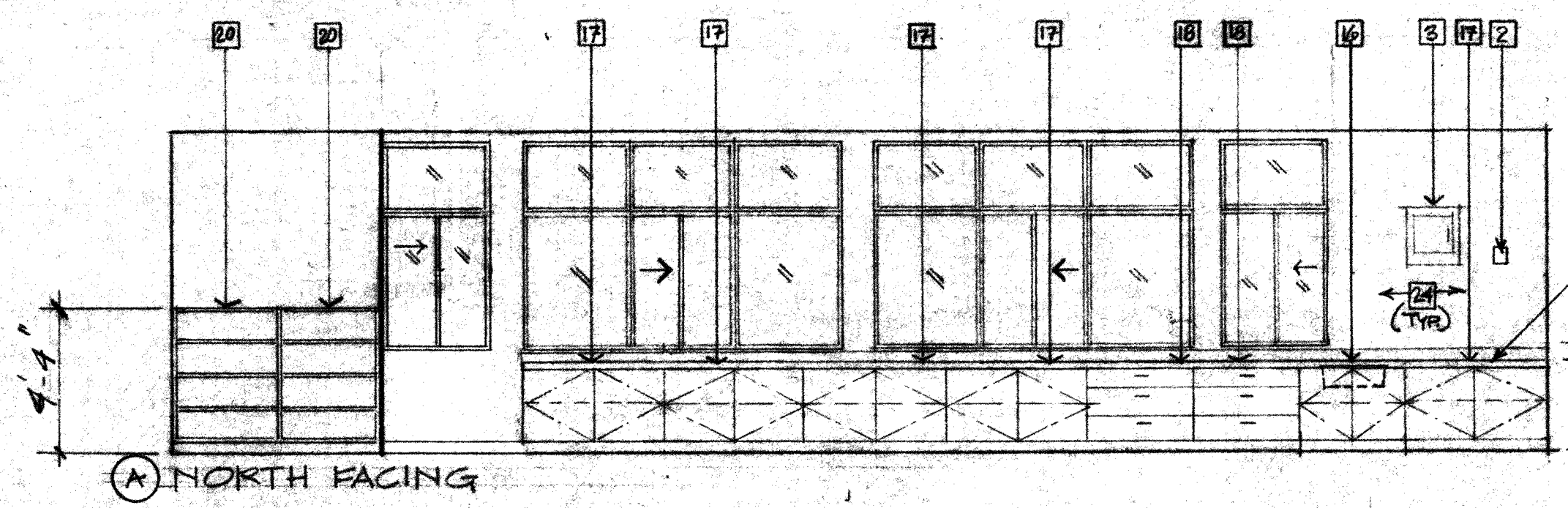
3 REFLECTED CEILING PLAN- SUMMIT  
1/8"=1'-0"

\*NOTE:  
CONTRACTOR TO PROVIDE PERIMETER FOUNDATION VENTILATION AS REQUIRED BY I.R. 23-6, Revised 9/85, Refer. Sec. 14, OF TITLE 21 AS PUBLISHED BY THE OFFICE OF THE STATE ARCHITECT. (1.5 SQ. FT. / 25 L.F. OF PERIMETER WALL)  
PERIMETER IS DEIGNED TO INCLUDE SPACE BETWEEN EXISTING BUILDINGS AND NEW BUILDINGS INCLUDING SPACE BETWEEN BUILDINGS AS REQUIRED FOR SEISMIC SEPARATION.  
EXISTING VENTILATION FOR EXISTING BUILDINGS TO BE MAINTAINED.

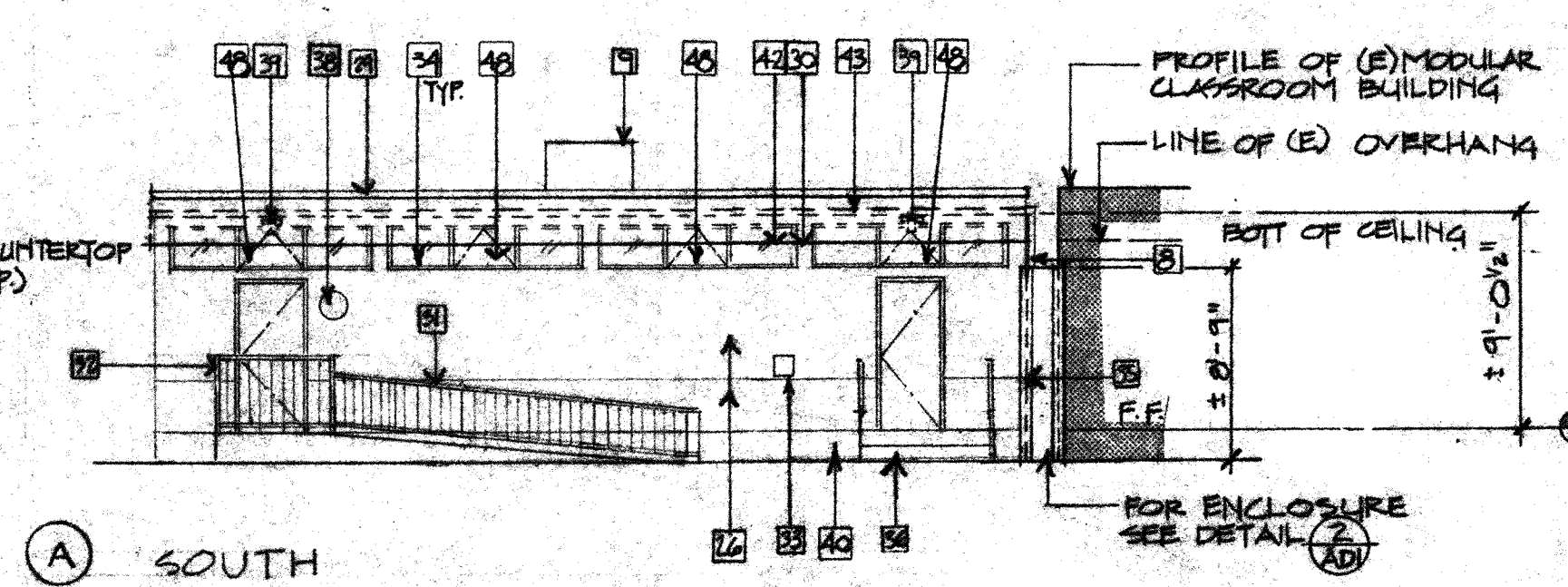
\*NOTE:  
RAMP AND LANDING LENGTHS ARE FIXED. CONTRACTOR TO VERIFY THAT EXISTING GRADE ELEVATIONS AT BASE OF RAMP ALLOWS FOR A MAXIMUM SLOPE OF 1:12 UP TO TOP OF LANDING AT P.F. ELEVATION.  
CONTRACTOR TO REMOVE EXISTING A.C. PAVING, REGRADE AND REPAVE AS REQUIRED TO ADJUST GRADES AT RAMP BASE LANDING AND AREAS LEADING TO RAMP BASE LANDING TO ALLOW FOR A MAXIMUM SLOPE IN THIS REPAVED AREA OF 1:20.



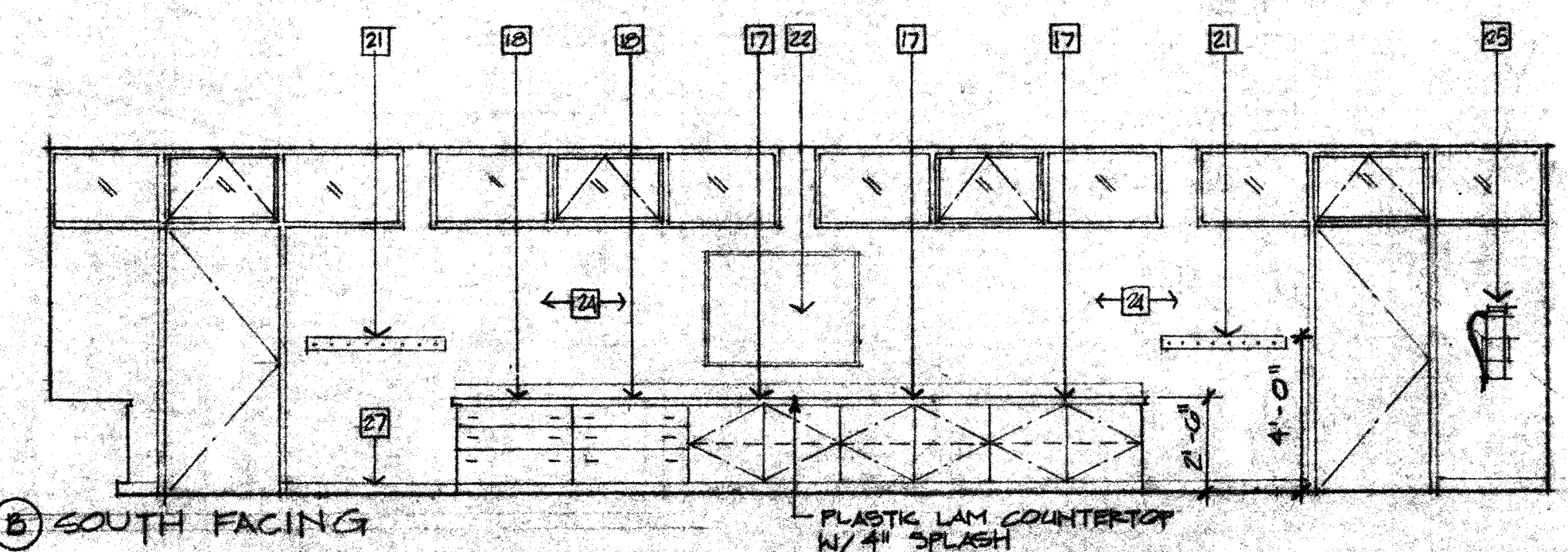
1 FLOOR PLAN- SUMMIT  
(ON "PERMANENT" CONCRETE CURB FOUNDATION \*)  
1/8"=1'-0"



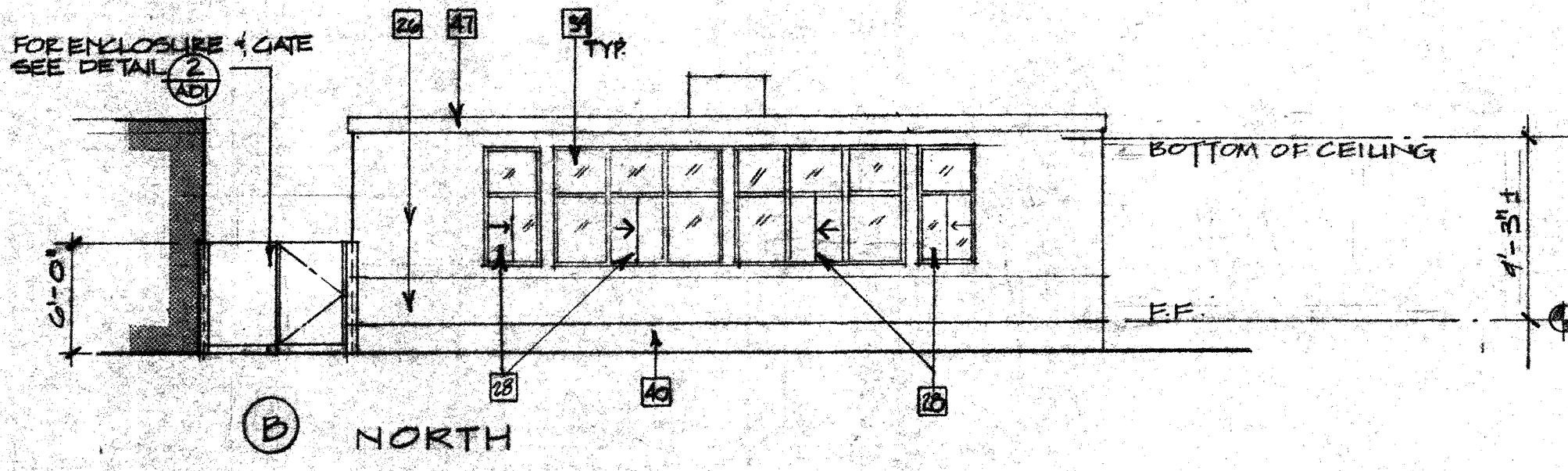
A NORTH FACING



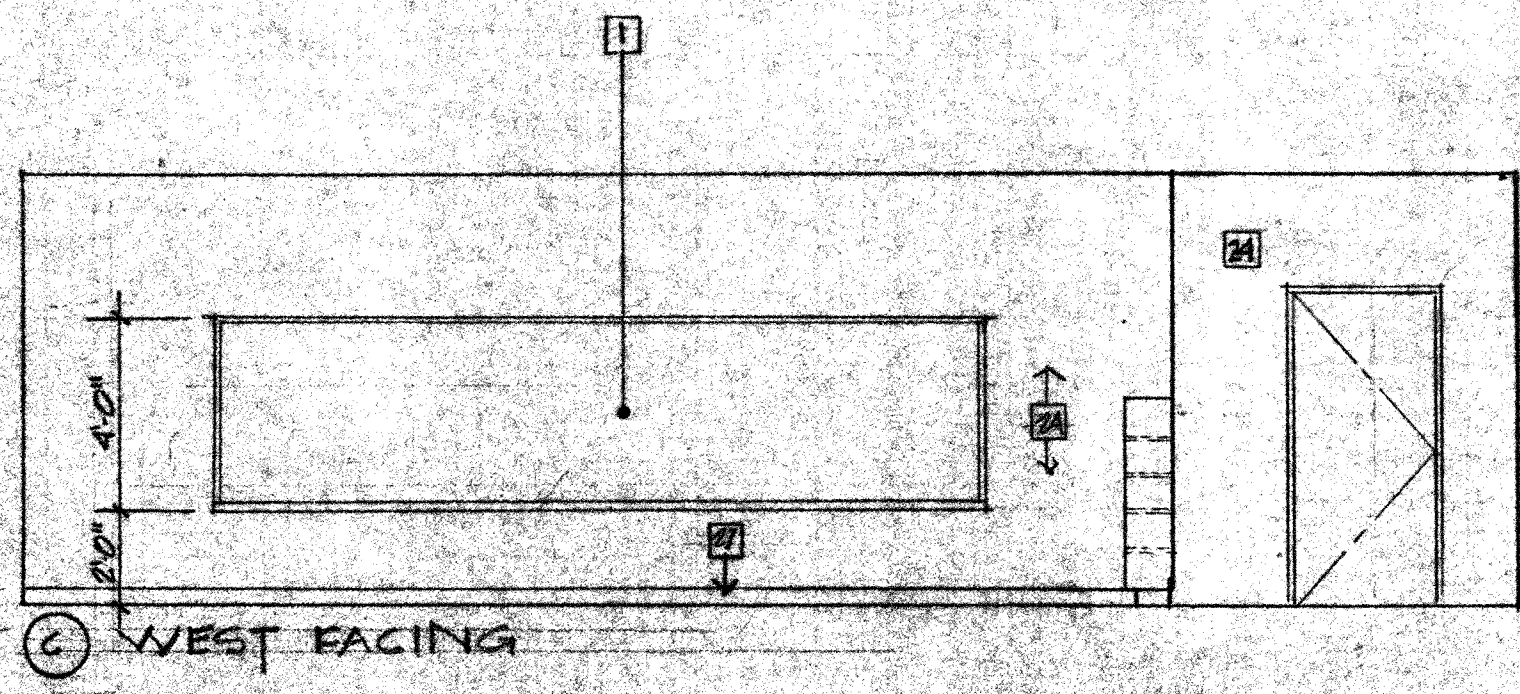
A SOUTH



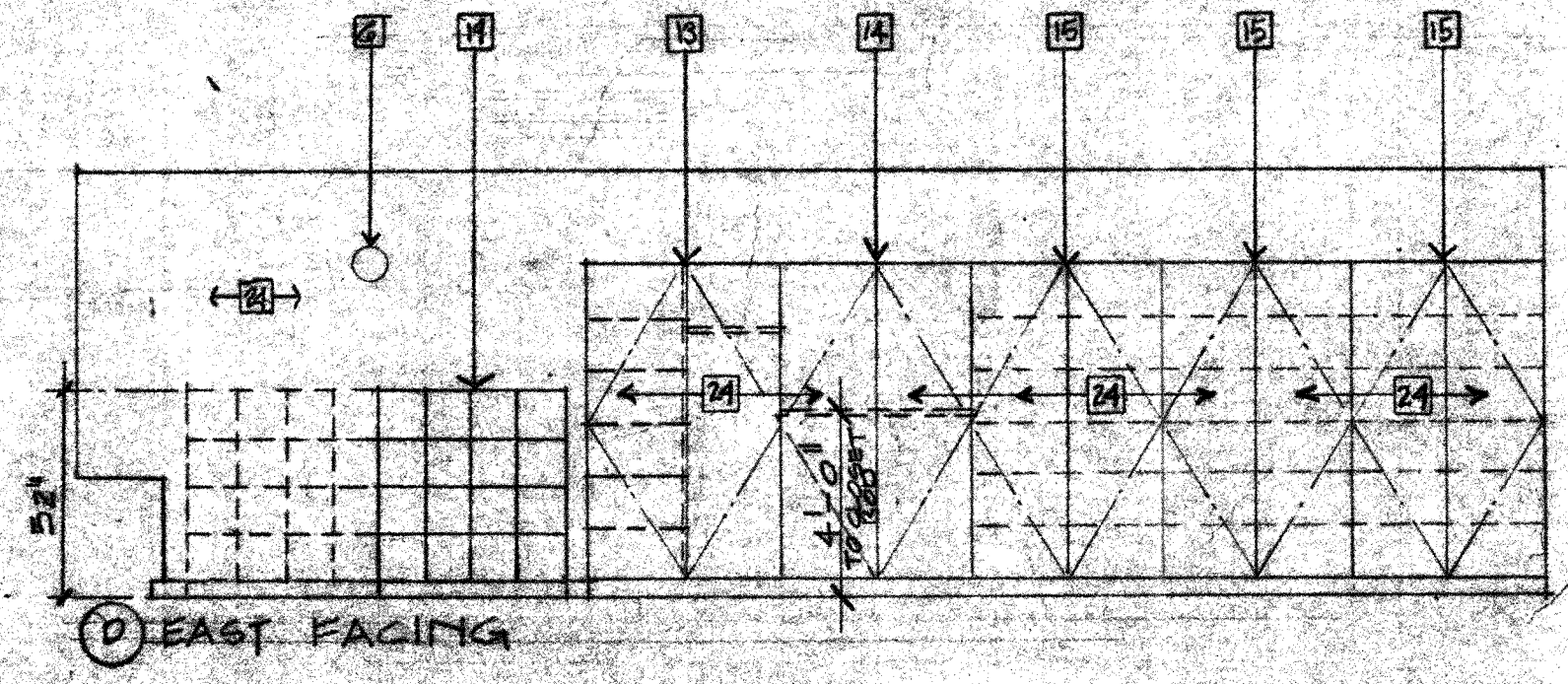
B SOUTH FACING



B NORTH

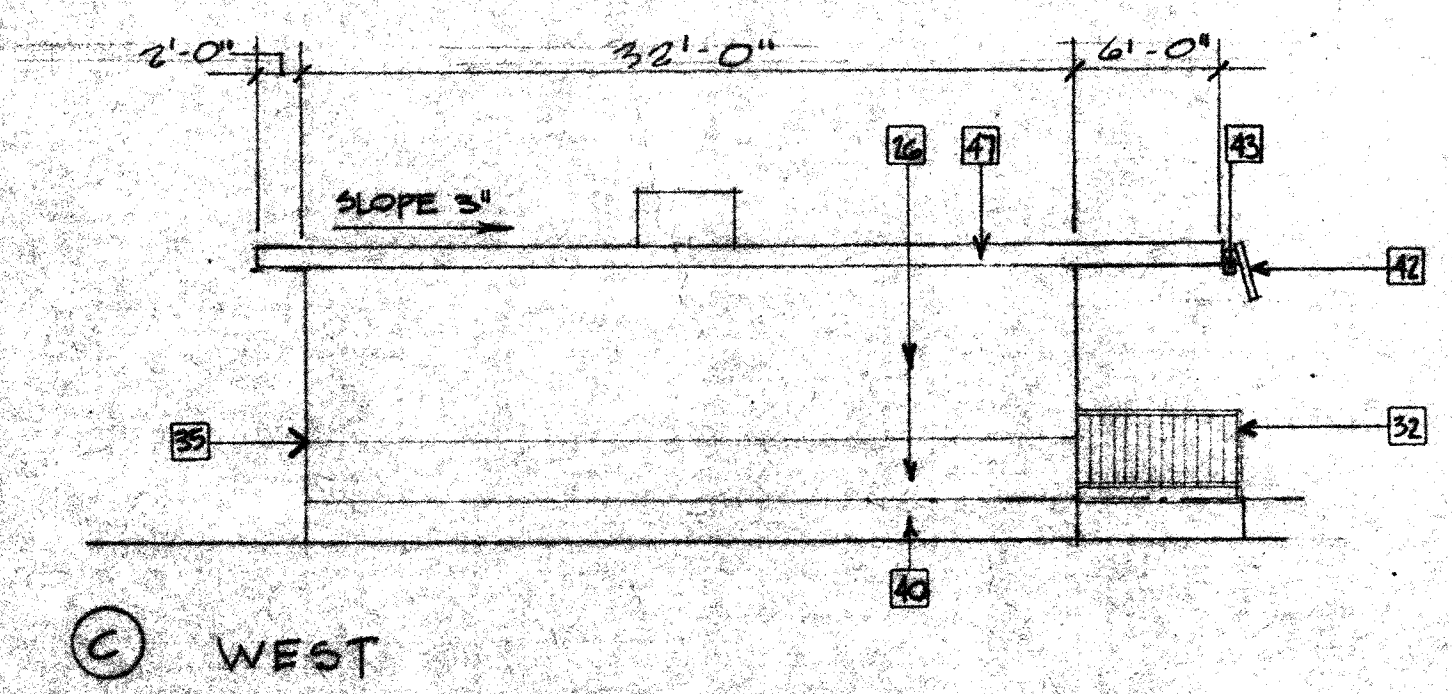


C WEST FACING



C EAST FACING

4 INTERIOR ELEVATIONS - SUMMIT  
1/4"=1'-0"



C WEST

2 EXTERIOR ELEVATIONS- SUMMIT  
1/8"=1'-0"

- ### NOTES
- ARCHITECTURAL
- Chalkboard 16'-0" x 4'-0"
  - T. stat w/locking cover
  - Power panel
  - 3'-0" x 7'-0" H.M. dr. & frame
  - Carpet
  - Clock - Verify location with (B) modular classroom bldg.
  - F/A pull box
  - Downspout w/splash block
  - Air conditioner
  - 2 x 4 Fluorescent light fixtures
  - 2 x 4 Suspended lay-in-ceiling
  - Conc. ramp - Rough texture broom finish - Slope 12:1 max.
  - Wardrobe & storage WIC # 511
  - Wardrobe WIC # 502
  - Tall storage cabinet WIC #412
  - Base cabinet #162 includes: 25" x 17" x 6 1/2" deep sink with lever faucets and insulated H.W. pipe and drain w/27" clear knee space below w/no base per H.C. requirements.
  - Base cabinet WIC #102
  - Drawer base cabinet WIC #240
  - Folding cubicles WIC #544
  - Book shelves WIC #601
  - Coathooks WIC #540
  - Liquid chalkboard 4'-0" x 3'-0"
  - Vinyl flooring
  - Tackable wall surface (typ. four walls)
  - Fire extinguisher
  - 5/8" ext. grade P.W. with "V" grooves at 8" o.c. & textured stucco finish. To match (B) modular classroom bldgs.
  - 4" Rubber base
  - Dark anodized alum. sliding windows - Typ. To match existing modular classroom bldg.
  - Builtup roofing - Match existing modular classroom bldg.
  - Line of overhang - Match & align with existing overhang
  - Metal railing 30" high - Extend 12" beyond bottom of railing
  - Metal guardrail 42" high
  - H/C sign by School District
  - Dark anodized alum. fixed windows - Typical
  - Change in color at siding. Match existing modular classrooms
  - Concrete stairs & landing
  - Metal toilet partitions
  - F/A bell
  - Ext. lighting - Match existing modular classroom bldg.
  - Conc. foundation
  - Metal handrail - extend 12" beyond top & bottom of ramp
  - 22 GA S.M. sloped fascia - To match & align with existing fascia
  - 22 GA galv. gutter - To match existing
  - Toilet paper holder
  - Ventilated closure strip between new & exist'g bldgs. - Expansion joint to accommodate 2" seismic separation
  - Wainscot 4'-0" high
  - GSM flashing
  - DARK ANODIZED ALUM ANKING WINDOWS
  - 5/8" W.P.GYP. BD.-CEIL & WALL
  - INCANDESCENT LIGHT
  - EXHAUST FAN

State Fire Marshal

O.S.A.

Access Compliance

Project Title  
NEW MODULAR CLASSROOM BUILDINGS

MIRA MEINERS SUMMIT  
TOPA OAKS MONTE TOPEKA

916 WTN. VIEW AVE. 1216 LOMA DR. 400 S. LOWMYA AVE.  
OJAI, CA. 93023 OJAI, CA. 93023 OJAI, CA. 93023

Sheet Title  
FLOOR PLAN  
EXTERIOR ELEVATIONS  
REFLECT CEILING PLAN  
INTERIOR ELEVATIONS

Prepared For  
OJAI UNIFIED SCHOOL DISTRICT  
414 E. OJAI AVE.  
OJAI, CA. 93023

Structural Engineer  
MECHANICAL ENGINEER  
ELECTRICAL ENGINEER

COAST VILLAGE ENGINEERING CORP.  
315 W. HALEY ST. SUITE 101  
SANTA BARBARA, CA. 93101

TOLENER AND ASSOCIATES G  
1115 AVENIDA ACASO SUITE G  
CAMARILLO, CA. 93010

James B. Tremaine AIA  
Architecture

19 E. Mission St., Suite A  
Santa Barbara,  
California 93101  
805 563-1228

Job No. 8821  
Date 2/15/89  
Drawn By.  
Revisions

Sheet No.  
A-D3  
of Sheets