

| NO. | REVISION DESCRIPTION | BY | DATE |
|-----|----------------------|----|------|
|     |                      |    |      |
|     |                      |    |      |
|     |                      |    |      |
|     |                      |    |      |
|     |                      |    |      |
|     |                      |    |      |
|     |                      |    |      |
|     |                      |    |      |
|     |                      |    |      |
|     |                      |    |      |

**811**  
 Know what's below.  
 Call before you dig.



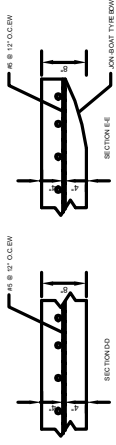
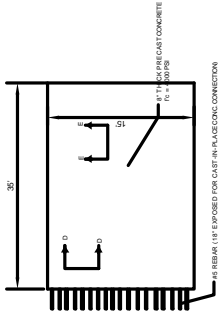
**EFFINGHAM COUNTY BOARD OF COMMISSIONERS PUBLIC WORKS**  
 300 HIGHWAY 119 SOUTH  
 EFFINGHAM, GA 31029  
 P-31212 1549589

*Tri-Venture County Seals*

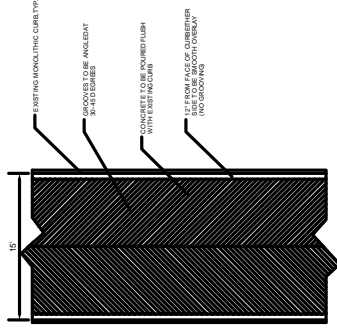
**CONSTRUCTION DETAILS**  
**STEEL BRIDGE BOAT LANDING**  
 SITE IMPROVEMENTS  
 EFFINGHAM COUNTY, GEORGIA  
 Prepared for:  
 EFFINGHAM COUNTY BOARD OF COMMISSIONERS

PROJECT NO.:  
 DESIGNED BY:  
 DRAWN BY:  
 CHECKED BY:  
 SCALE:  
 DATE:

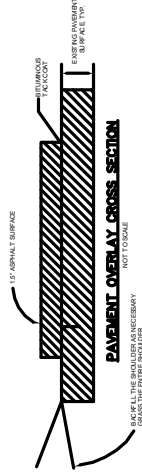
**SHEET**  
**2**  
**OF**  
**2**



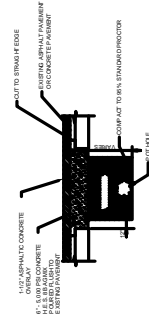
**SUBMERGED BOAT RAMP SECTION (PUSH SLAB)**  
 NOT TO SCALE



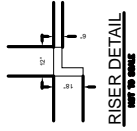
**PLAN VIEW OF BOAT RAMP OVERLAY (WITH CHEVRON-STYLE GROOVING)**  
 NOT TO SCALE



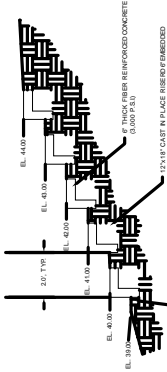
**PAVEMENT OVERLAY CROSS SECTION**  
 NOT TO SCALE



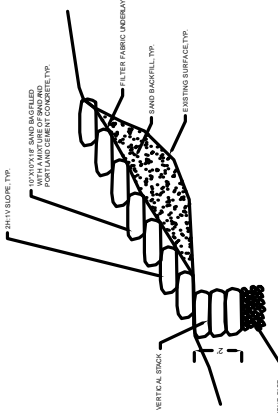
**POT HOLE REPAIR**  
 NOT TO SCALE



**RISER DETAIL**  
 NOT TO SCALE



**CAST IN PLACE RISER DETAIL**  
 NOT TO SCALE



**CONCRETE FILLED SANDBAG RETAINING WALL**  
 NOT TO SCALE

- NOTES:**
1. THE ENTRANCE ROAD FROM HIGHWAY 119 TO THE BOTTOM OF THE SLOPE SHALL BE OVERLAD WITH 1" OF ASPHALT PER THE WRITTEN SPECIFICATIONS.
  2. ALL POT HOLES OF OTHER SURFACE DEFICIENCIES SHALL BE REPAIRED PER THE WRITTEN SPECIFICATIONS.
  3. THE CONTRACTOR SHALL BACKFILL THE ROADWAY SHOULDER AS NECESSARY. THE ENTIRE SHOULDER SHALL BE GRASSSED.

| NO. | REVISION DESCRIPTION | DATE |
|-----|----------------------|------|
|     |                      |      |
|     |                      |      |
|     |                      |      |
|     |                      |      |
|     |                      |      |
|     |                      |      |
|     |                      |      |
|     |                      |      |
|     |                      |      |
|     |                      |      |
|     |                      |      |
|     |                      |      |
|     |                      |      |
|     |                      |      |
|     |                      |      |
|     |                      |      |
|     |                      |      |
|     |                      |      |
|     |                      |      |
|     |                      |      |
|     |                      |      |
|     |                      |      |
|     |                      |      |

**811**  
Know what's below.  
Call before you dig.



**EFFINGHAM COUNTY BOARD OF COMMISSIONERS PUBLIC WORKS**  
Effingham County Board of Commissioners  
500 HIGHLAND AVE. SUITE 200  
SAVANNAH, GA 31404  
P: 912.335.5555 F: 912.335.5555

**SITE DEVELOPMENT PLAN**  
**STEEL BRIDGE BOAT LANDING**  
SITE IMPROVEMENTS  
EFFINGHAM COUNTY, GEORGIA  
Prepared for:  
EFFINGHAM COUNTY BOARD OF COMMISSIONERS

|             |  |
|-------------|--|
| PROJECT NO. |  |
| DESIGNED BY |  |
| DRAWN BY    |  |
| CHECKED BY  |  |
| SCALE       |  |
| DATE        |  |

**SHEET 1 OF 2**

**CSMCC** GEORGIA SOL. 480.0000  
CONTRACTOR  
Level 1 Contracting Professional  
ANTHONY T. ALLEN  
CERTIFICATION NUMBER 30000088  
ISSUED 09/20/2008 EXPIRES 09/20/2012

