

WATER QUALITY CALCULATIONS AND NARRATIVE:

ADDED "IMPERVIOUS" PARKING SURFACE: 10489 SF
 SUBTRACTED IMPERVIOUS (OLD BOAT RAMP): 272 SF

WATER REQUIRED FOR TREATMENT:
 (10489 SF - 272 SF) * 1.2 IN/12 IN/FT = 1049 CF - 27 CF = 1022 CF

VOLUME PROVIDED (BIORETENTION AREA): 789 CF

THUS, THE BIORETENTION AREA TREATS 77% OF THE FIRST FLUSH STORM WATER FOR NEW NET IMPERVIOUS AREA. MOREOVER, THE STREAM BUFFER FOR THE AREA SOUTH OF THE BOAT RAMP WITHIN EFFINGHAM COUNTY'S PROPERTY HAS BEEN EXPANDED FROM 25' TO 50'. THE MITIGATIVE EFFORTS SHOULD SERVE TO REDUCE NON-POINT RUNOFF POLLUTANTS FROM ENTERING THE RIVER.

TOTAL CONSTRUCTION MATERIAL BELOW HW:

PRESTRESSED CONCRETE PILES: 28 LF * 2' DEPTH * 10' WIDTH = 560 CF = 20.75 CY

CONCRETE SAND BAGS: (97 LF TOTAL * 2.35' TOTAL DEPTH * 9' AVG WIDTH) + BASE(97*3*1.5) = 2488 CF = 92 CY

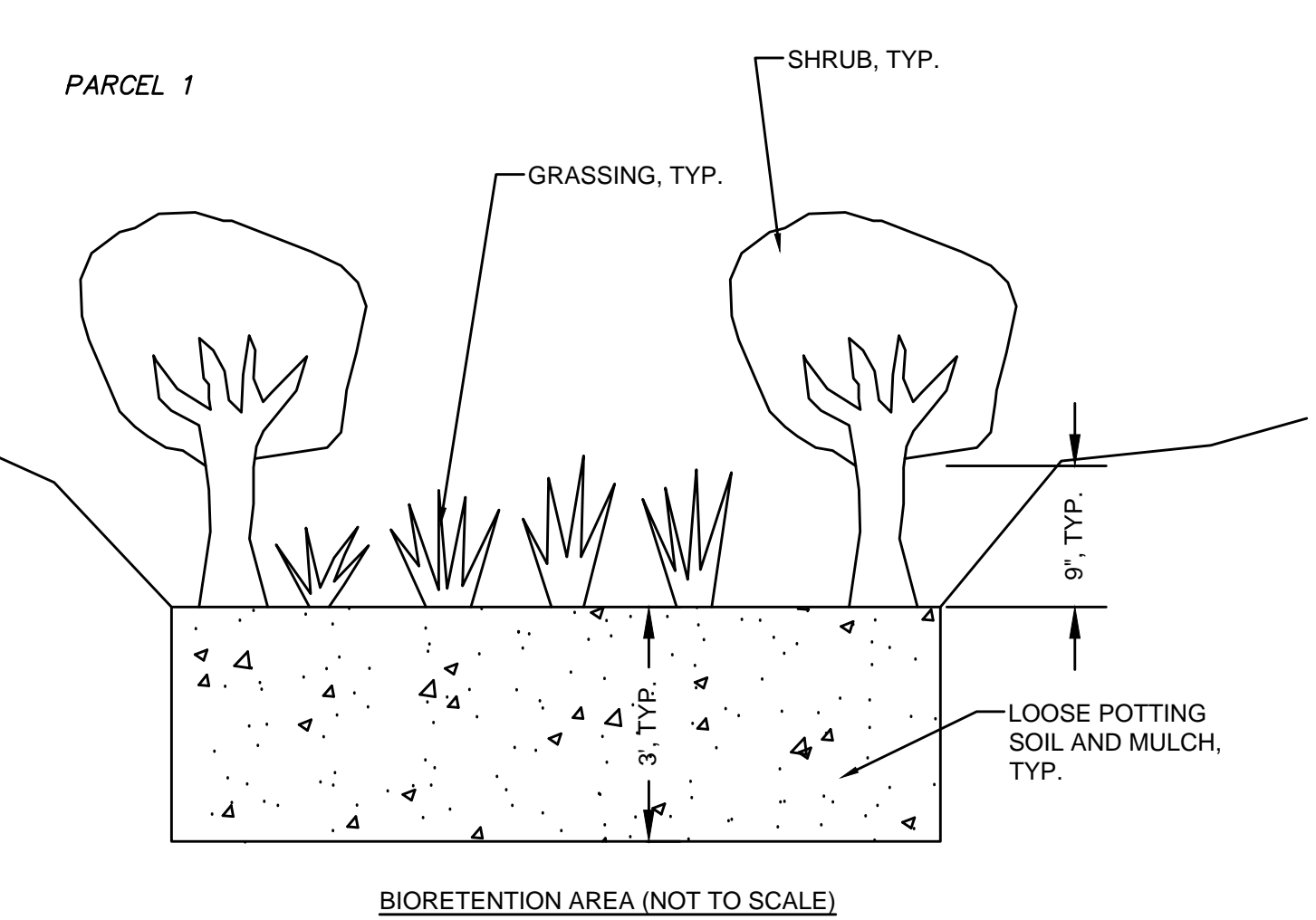
BOAT RAMP: 1.5' DEPTH * 15' * 35' = 1050 CF = 29 CY

TOTAL MATERIAL: 20.75+92+29 = 142 CY

TOTAL RIVER FRONTAGE OF CONSTRUCTION (FROM END OF SAND BAGS NORTH TO EDGE OF BOAT RAMP SOUTH)=164 LF

MATERIAL/LF = 0.87 CY/LF

ADDITIONALLY, 13 CY OF CONCRETE IS BEING REMOVED FROM BANK.



- NOTES:**
1. THE ENTRANCE ROAD FROM HIGHWAY 119 TO THE BOTTOM OF THE SLOPE SHALL BE OVERLAID WITH 1 1/2" OF ASPHALT PER THE WRITTEN SPECIFICATION.
 2. ALL "POT HOLES" OF OTHER SURFACE DEFICIENCIES SHALL BE REPAIRED PRIOR TO COMMENCING OVERLAY.
 3. THE CONTRACTOR SHALL BACKFILL THE ROADWAY SHOULDER AS NECESSARY. THE ENTIRE SHOULDER SHALL BE GRASSED.

CERTIFICATION: I HEREBY CERTIFY UNDER PENALTY OF LAW THAT THIS PLAN WAS PREPARED AFTER A SITE VISIT TO THE LOCATIONS DESCRIBED HEREIN BY MYSELF OR MY AUTHORIZED AGENT, UNDER MY DIRECT SUPERVISION.

Anthony Allen

GSWCC GEORGIA SOIL AND WATER CONSERVATION COMMISSION

ANTHONY T. ALLEN
 Level II Certified Design Professional

CERTIFICATION NUMBER 0000044936
 ISSUED 04/20/2016 EXPIRES 04/20/2019

NO.	REVISION DESCRIPTION	BY	DATE

811

Know what's below.
 Call before you dig.

Professional Seal: ANTHONY T. ALLEN, PROFESSIONAL ENGINEER, STATE OF GEORGIA, LICENSE NO. 22161

GRAPHIC SCALE: 1"=20'-0"

EFFINGHAM COUNTY BOARD OF COMMISSIONERS PUBLIC WORKS

505 HIGHWAY 119 SOUTH
 SPRINGFIELD, GA 31209
 PH: (912) 754-2141
 FX: (912) 754-9950

EFFINGHAM COUNTY GEORGIA

SITE DEVELOPMENT PLAN

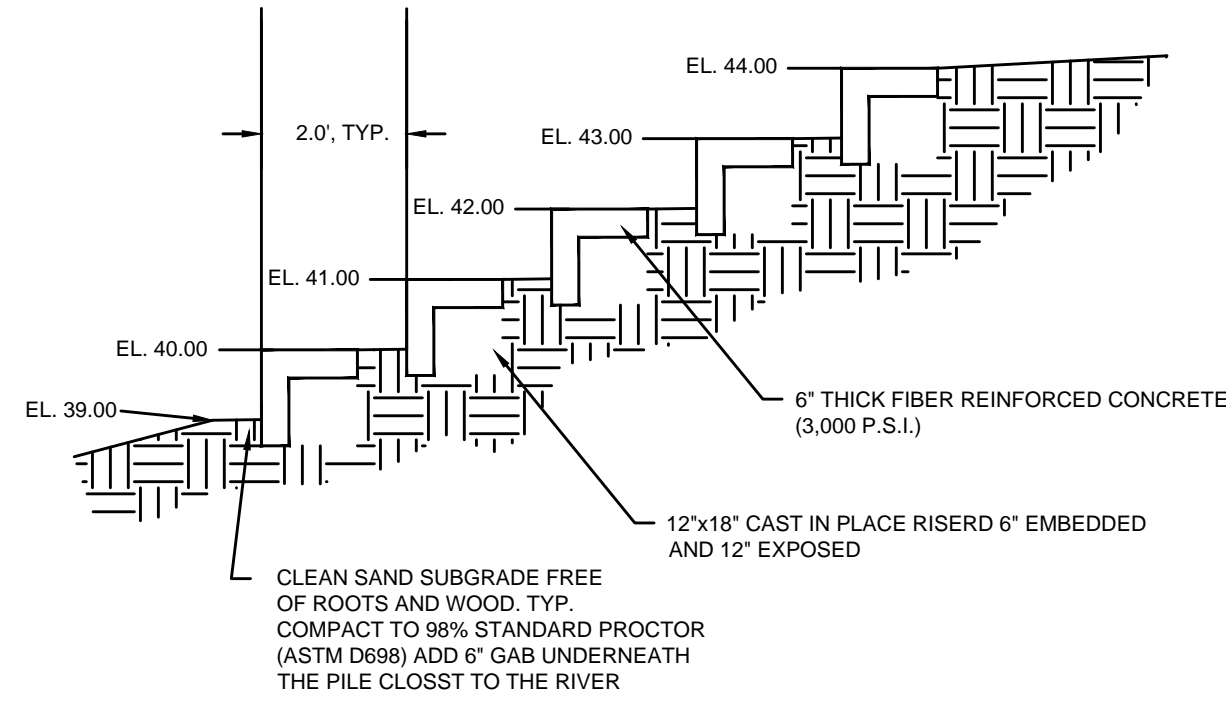
STEEL BRIDGE BOAT LANDING

SITE IMPROVEMENTS
 EFFINGHAM COUNTY, GEORGIA

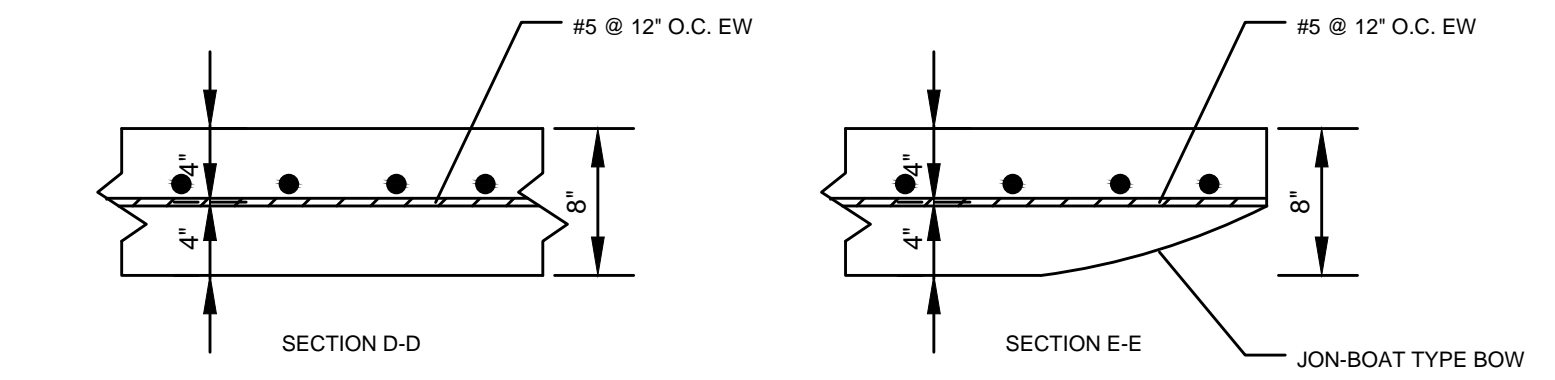
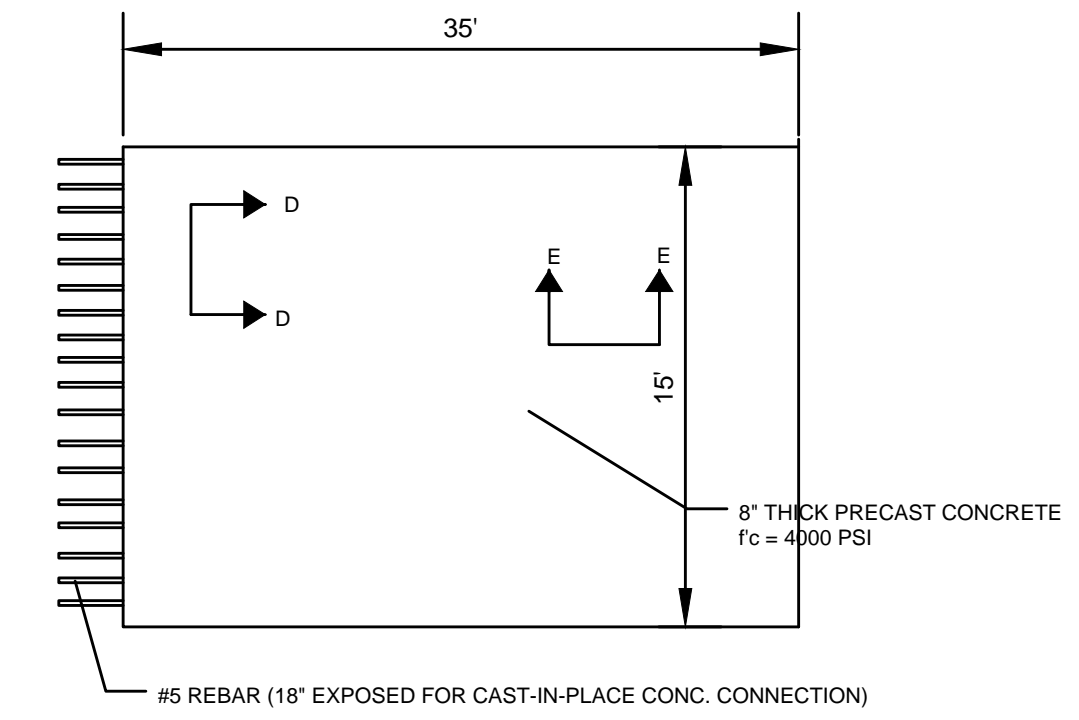
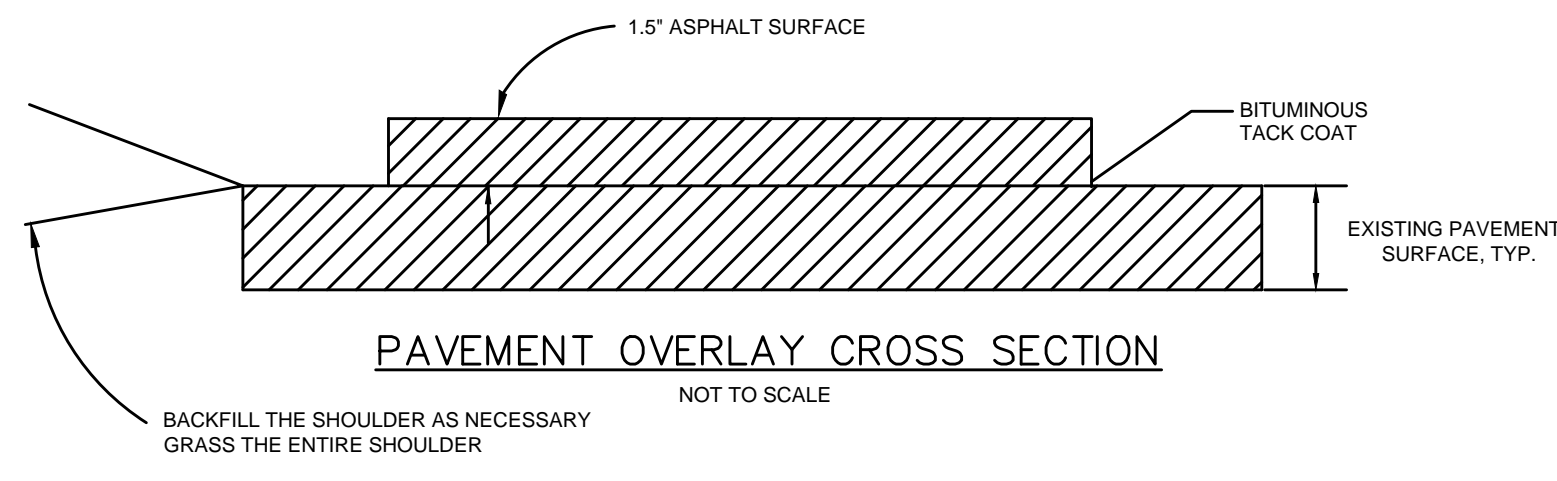
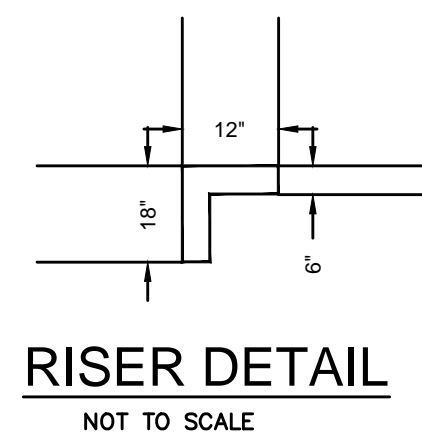
Prepared for:
 EFFINGHAM COUNTY BOARD OF COMMISSIONERS

PROJECT NO.: 15-012
 DRAWN BY: ATA
 DESIGNED BY: ATA
 SURVEYED BY: EMC
 SURVEY DATE: 9/23/2009
 CHECKED BY: ATA
 SCALE: 1" = 20'
 DATE: 2/08/2017

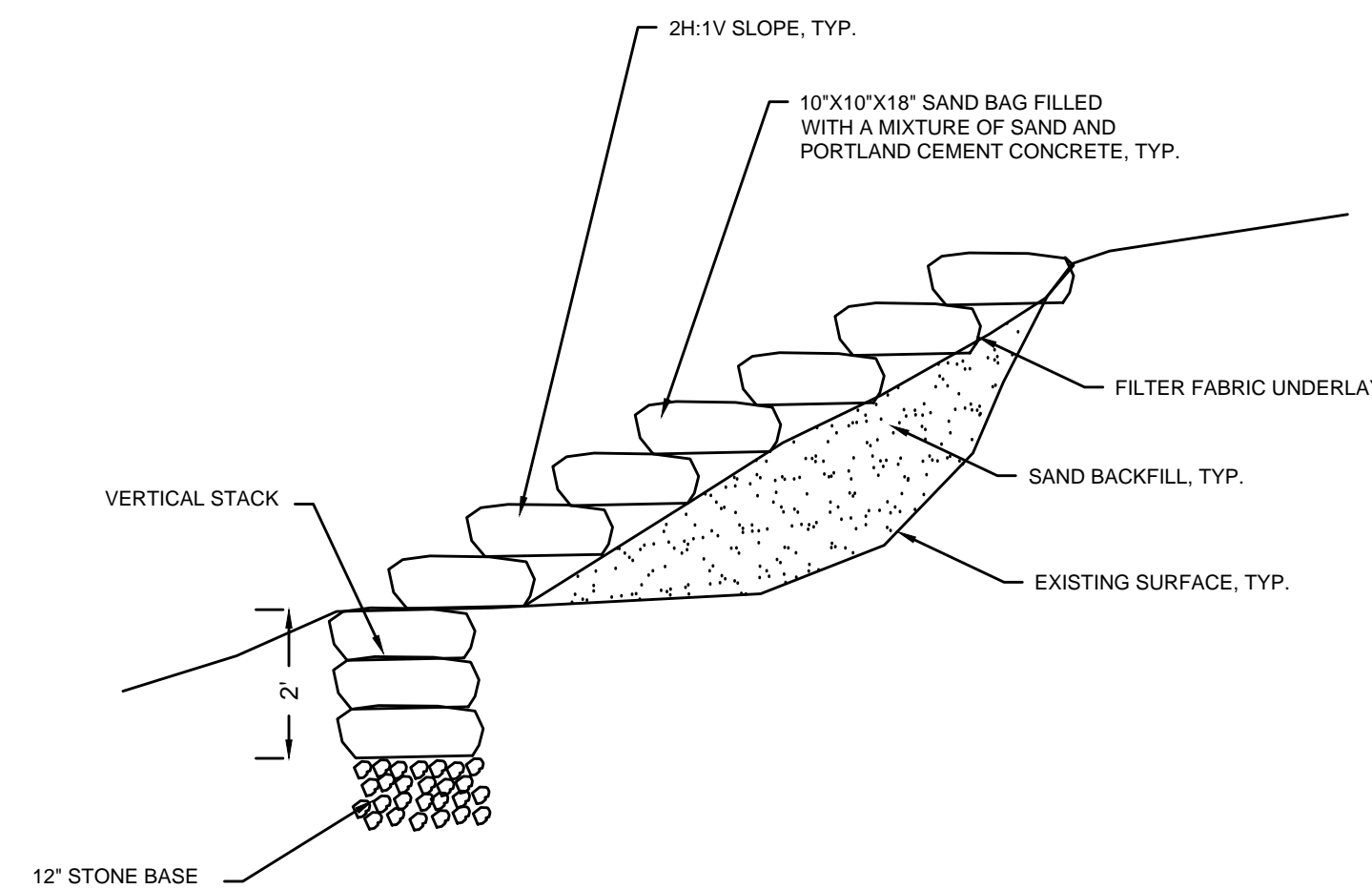
SHEET
1
 OF 2



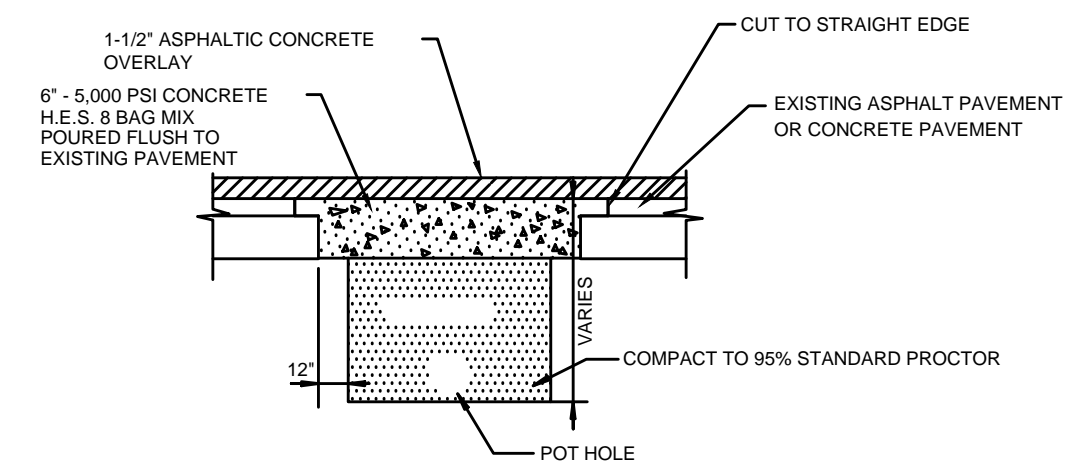
CAST IN PLACE RISER DETAIL
NOT TO SCALE



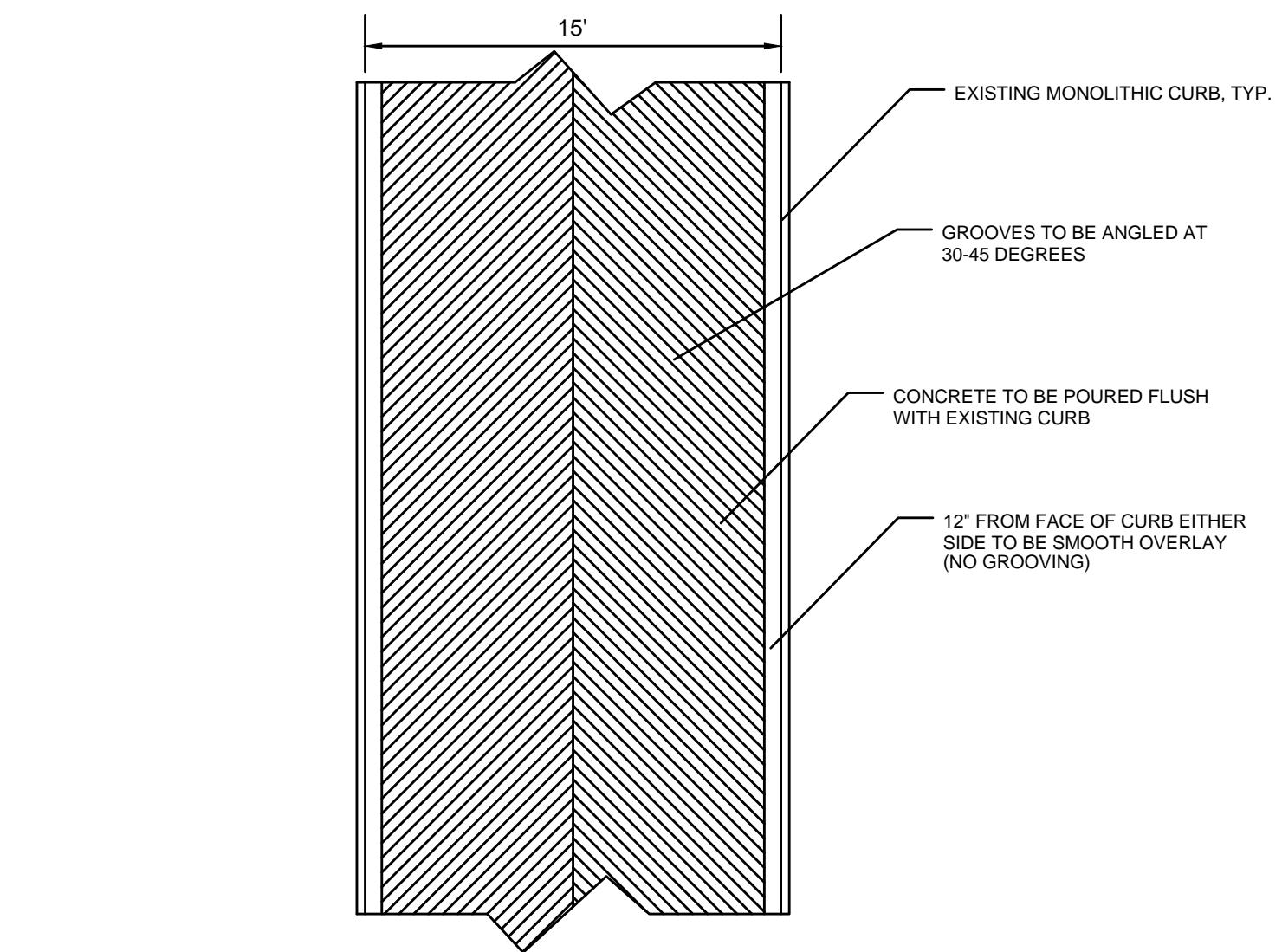
SUBMERGED BOAT RAMP SECTION (PUSH SLAB)
NOT TO SCALE



CONCRETE FILLED SANDBAG RETAINING WALL
NOT TO SCALE

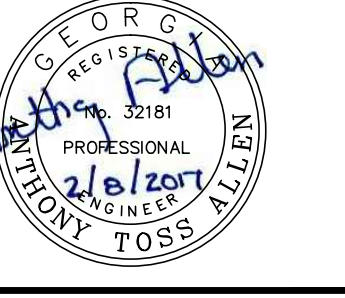


POT HOLE REPAIR
NOT TO SCALE

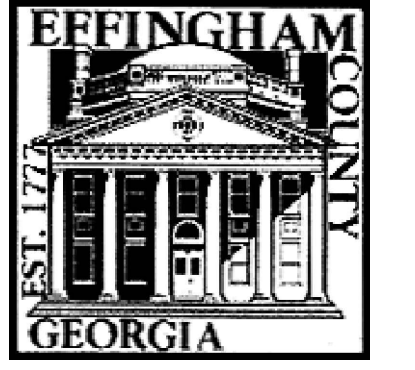


PLAN VIEW OF BOAT RAMP OVERLAY (WITH CHEVRON-STYLE GROOVING)
NOT TO SCALE

NO.	REVISION DESCRIPTION	BY	DATE



EFFINGHAM COUNTY BOARD OF COMMISSIONERS PUBLIC WORKS
505 HIGHWAY 145 SOUTH SPRINGFIELD, GA 31209
PH: (912) 754-2141
FX: (912) 754-9950



CONSTRUCTION DETAILS
STEEL BRIDGE BOAT LANDING SITE IMPROVEMENTS
EFFINGHAM COUNTY, GEORGIA
Prepared for:
EFFINGHAM COUNTY BOARD OF COMMISSIONERS

PROJECT NO.:	15-012
DRAWN BY:	ATA
DESIGNED BY:	ATA
SURVEYED BY:	EMC
SURVEY DATE:	9/23/2009
CHECKED BY:	ATA
SCALE:	N.T.S.
DATE:	2/08/2017

SHEET
2
OF 2

GSWCC GEORGIA SOIL AND WATER CONSERVATION COMMISSION
ANTHONY T. ALLEN
Level II Certified Design Professional
CERTIFICATION NUMBER 0000044936
ISSUED 08/21/2007 EXPIRES 08/21/2019