



Morgan Square v 6.5

THE NEXT EVOLUTION

PRE-SUBMITTAL MEETING

AUGUST 17, 2022

CITY OF SPARTANBURG, SOUTH CAROLINA

Agenda

History of the Square

Key Project Issues

Key Project Goals

Next Steps & RFQ Overview

A historical black and white photograph of a busy street scene, likely from the late 19th or early 20th century. The street is filled with numerous horse-drawn carriages and wagons. In the background, several multi-story brick buildings line the street. Visible storefront signs include "FURNITURE.", "CUD", "ANDERSON", "P.A. GARDNER", and "BAR ROOM". The overall atmosphere is one of a bustling, commercial district.

What

IS THE HISTORY OF THE SQUARE?

MORGAN SQUARE TIMELINE

FUTURE EVOLUTION

1787

PUBLIC SQUARE CREATED

1881

General Daniel Morgan statue erected and area renamed Morgan Square



1900

Streetcars, horses, and the first private automobiles interact in the Square



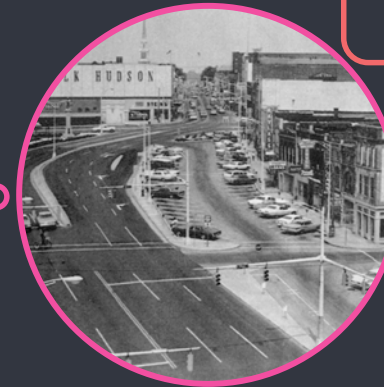
1940

Bandstand for Sunday afternoon concerts installed



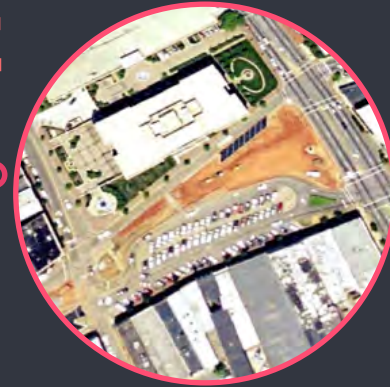
1960

Area used primarily as a parking lot in various configurations

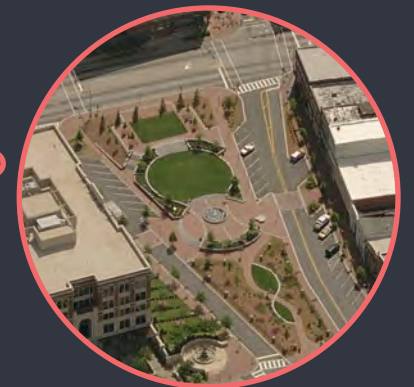


1995

Transformation into a focal public space for downtown



2006



2022

An aerial photograph of a city street grid, showing buildings, roads, and parking lots. The image is overlaid with a semi-transparent blue and white geometric pattern. Large white text is centered over the image.

What

Are the Key Issues?

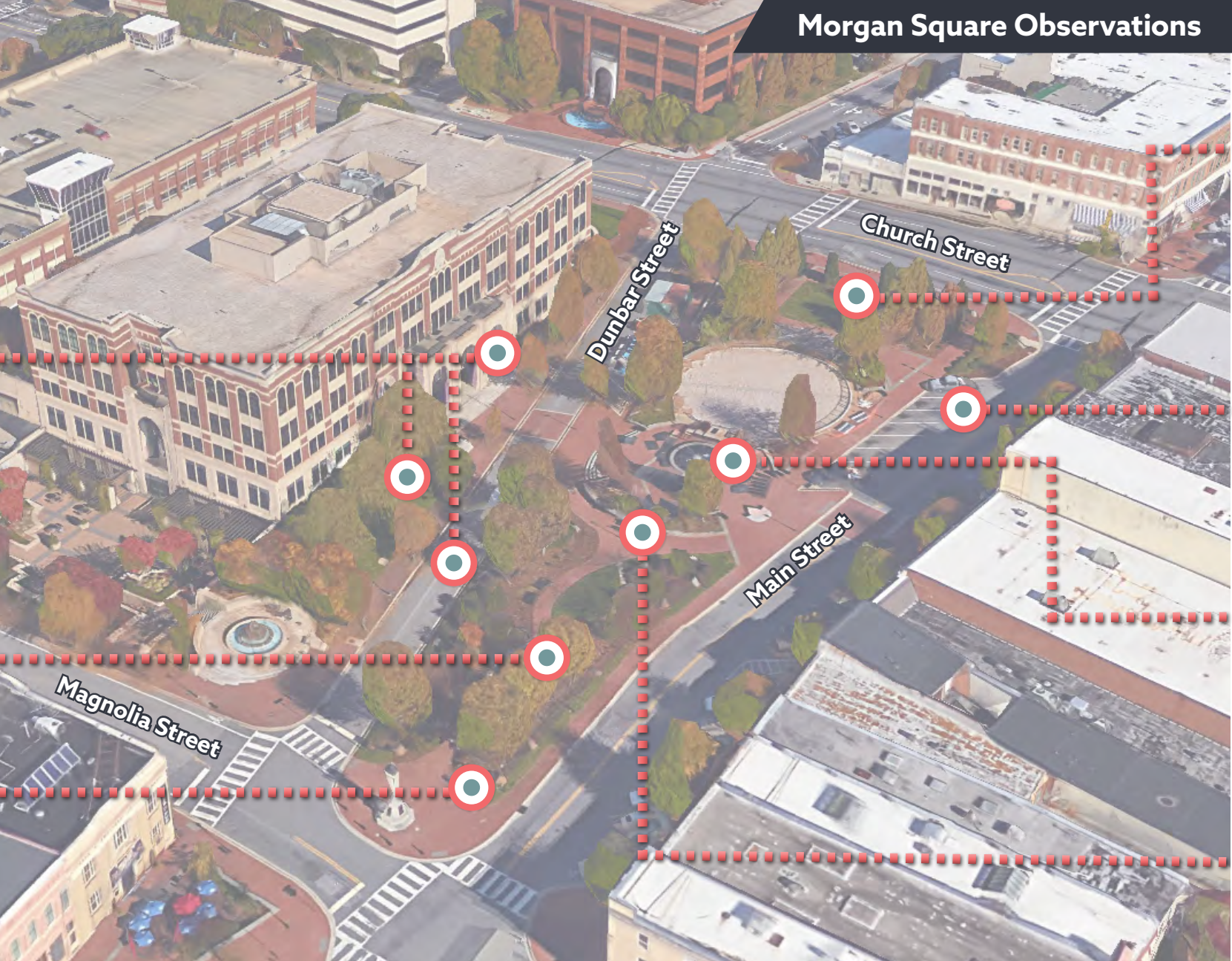
Project Site Information: Primary Boundary



Project Site Information: Overall Study Area



Morgan Square Observations



1 Missing active ground floors with urban sidewalks, elevated plazas, and a curbsless street to encourage cross-square pedestrian activity

2 Limiting access to areas under tree canopy due to excess understory plantings

3 Limiting flexibility with fixed furnishings; creating impermeable edge and limiting access/visibility with fencing

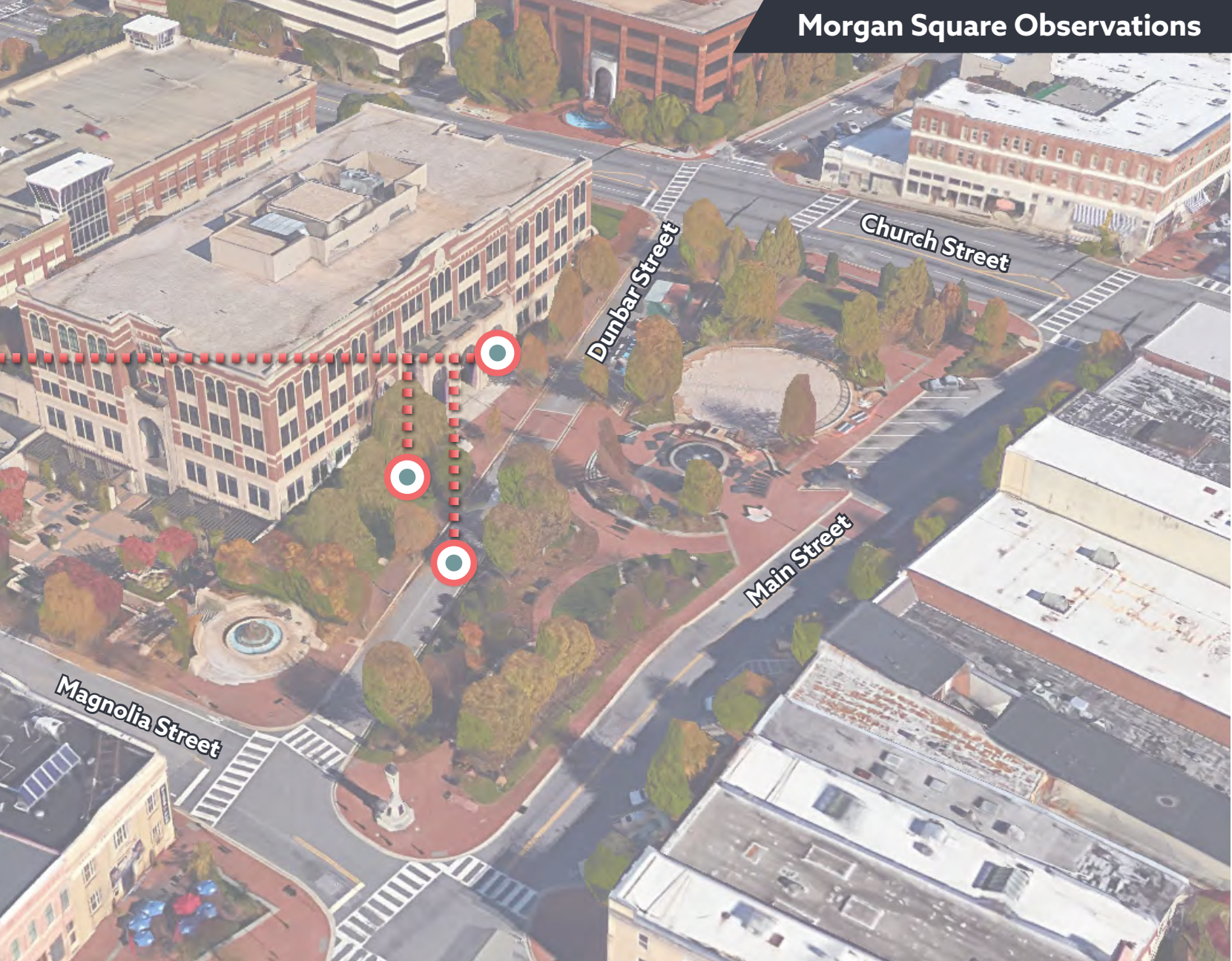
4 Lacking iconic structure/kiosk along Church Street for vendors and/or flexible programming elements

5 Should Main Street be open, closed, or somewhere in between?

6 Missing the opportunity for an interactive water element with existing static fountain

7 Complicating pedestrian routes with walls; need to carve staircase for access

Morgan Square Observations



Missing active ground floors with urban sidewalks, elevated plazas, and a curbsless street to encourage cross-square pedestrian activity

Limiting access to areas under tree canopy due to excess understory plantings

Limiting flexibility with fixed furnishings; creating impermeable edge and limiting access/visibility with fencing

Lacking iconic structure/kiosk along Church Street for vendors and/or flexible programming elements

Should Main Street be open, closed, or somewhere in between?

Missing the opportunity for an interactive water element with existing static fountain

Complicating pedestrian routes with walls; need to carve staircase for access

1

One Morgan Square & Dunbar Street

- Lack of ground floor activity
- Inadequate sidewalk width for outdoor dining
- Awkward topography
- Curbs do not permit zero-step accessibility for the disabled and mothers with strollers



Morgan Square Observations



Missing active ground floors with urban sidewalks, elevated plazas, and a curbsless street to encourage cross-square pedestrian activity

1

Limiting access to areas under tree canopy due to excess understory plantings

2

Limiting flexibility with fixed furnishings; creating impermeable edge and limiting access/visibility with fencing

3

Lacking iconic structure/kiosk along Church Street for vendors and/or flexible programming elements

4

Should Main Street be open, closed, or somewhere in between?

5

Missing the opportunity for an interactive water element with existing static fountain

6

Complicating pedestrian routes with walls; need to carve staircase for access

7

2 The Tree Canopy

- Fantastic tree canopy to preserve
- Understory shrub plantings that reduce the amount of usable places for people



Morgan Square Observations



Missing active ground floors with urban sidewalks, elevated plazas, and a curbsless street to encourage cross-square pedestrian activity

Limiting access to areas under tree canopy due to excess understory plantings

Limiting flexibility with fixed furnishings; creating impermeable edge and limiting access/visibility with fencing

4 Lacking iconic structure/kiosk along Church Street for vendors and/or flexible programming elements

5 Should Main Street be open, closed, or somewhere in between?

6 Missing the opportunity for an interactive water element with existing static fountain

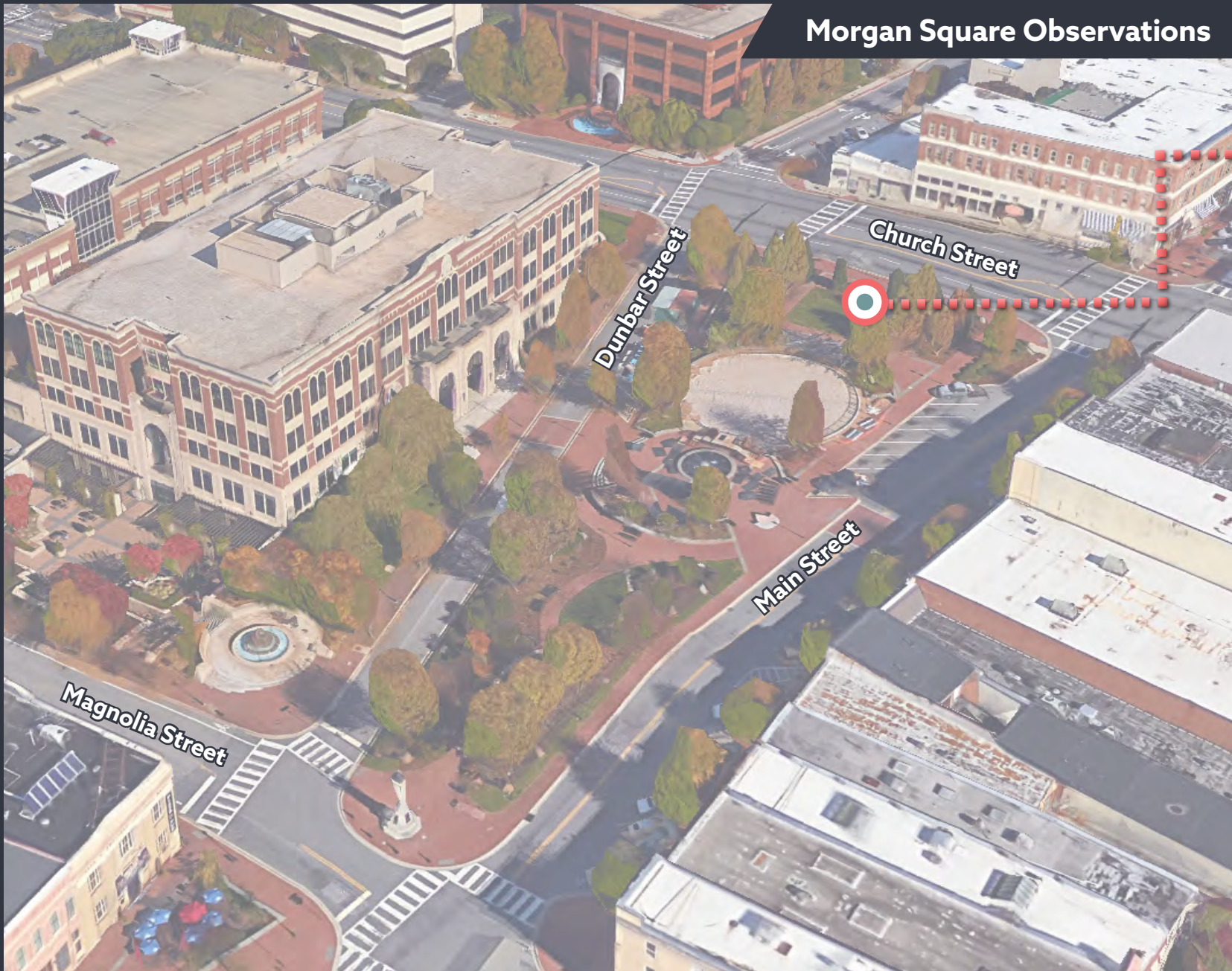
7 Complicating pedestrian routes with walls; need to carve staircase for access

3 The Western Entry

- Fixed benches as only seating option is limiting
- Fencing reduces overall visibility and access



Morgan Square Observations



Missing active ground floors with urban sidewalks, elevated plazas, and a curbsless street to encourage cross-square pedestrian activity

1

Limiting access to areas under tree canopy due to excess understory plantings

2

Limiting flexibility with fixed furnishings; creating impermeable edge and limiting access/visibility with fencing

3

Lacking iconic structure/kiosk along Church Street for vendors and/or flexible programming elements

4

Should Main Street be open, closed, or somewhere in between?

5

Missing the opportunity for an interactive water element with existing static fountain

6

Complicating pedestrian routes with walls; need to carve staircase for access

7

4 The Eastern Entry

- Vegetation prevents clear visibility into the Square
- No permanent structure for civic use/programming



Morgan Square Observations



Missing active ground floors with urban sidewalks, elevated plazas, and a curbsless street to encourage cross-square pedestrian activity

1

Limiting access to areas under tree canopy due to excess understory plantings

2

Limiting flexibility with fixed furnishings; creating impermeable edge and limiting access/visibility with fencing

3

Lacking iconic structure/kiosk along Church Street for vendors and/or flexible programming elements

4

Should Main Street be open, closed, or somewhere in between?

5

Missing the opportunity for an interactive water element with existing static fountain

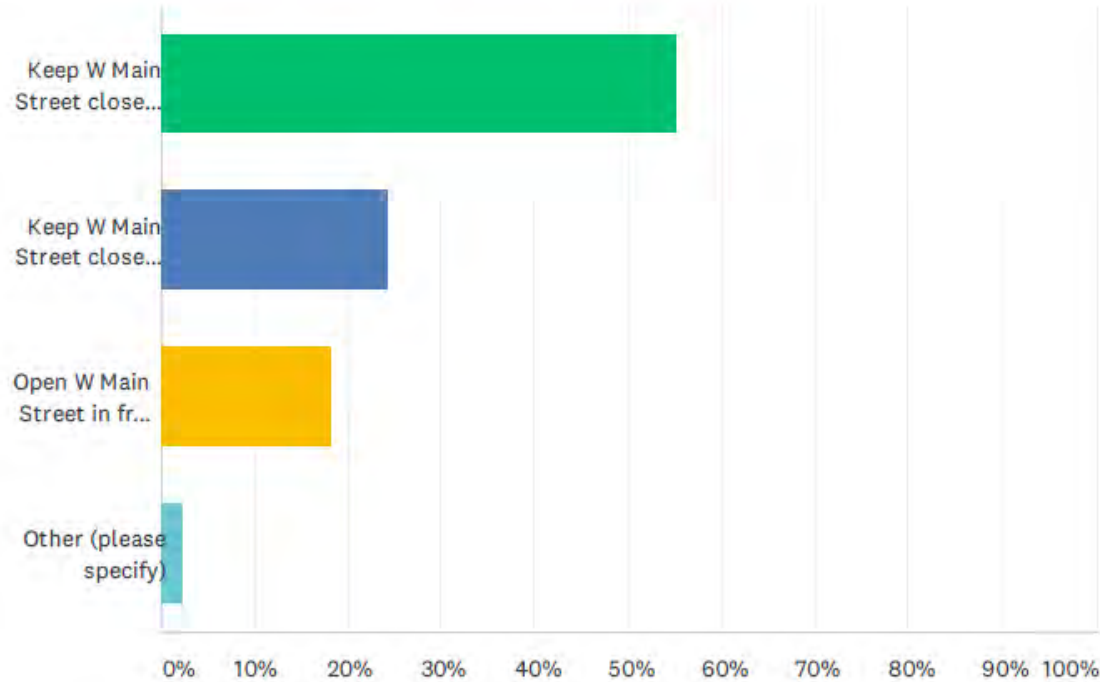
6

Complicating pedestrian routes with walls; need to carve staircase for access

7

Q17 Which of these options do you favor most for the Morgan Square area?

Answered: 3,233 Skipped: 212



ANSWER CHOICES

RESPONSES

Keep W Main Street closed to vehicle traffic in front of the square full-time indefinitely for expanded pedestrian use.

55.24%

1,786

Keep W Main Street closed to vehicle traffic in front of the square on weekends (Friday-Sunday) for expanded pedestrian use and open to vehicle traffic on weekdays (Monday-Thursday).

24.28%

785

Open W Main Street in front of the square to vehicle traffic.

18.25%

590

Other (please specify)

2.23%

72

TOTAL

3,233

- Online survey completed this summer after a 2 year temporary closure
- Clear public support (~75%) for some level of closure (full or hybrid)
- In August, City Council endorse a continued closure for 2 year pending the results of this design (and allowing for a potential construction period)

5

Main Street Opportunities: OPTION A - SIDEWALK EXPANSION

- Close or expand the sidewalk zone and reuse some or all parking for parklets and outdoor dining



5

Main Street Opportunities: OPTION B - FESTIVAL STREET

- Festival street that can be opened or closed through the use of bollards
- Curbless pavers give additional flexibility and accessibility for this block



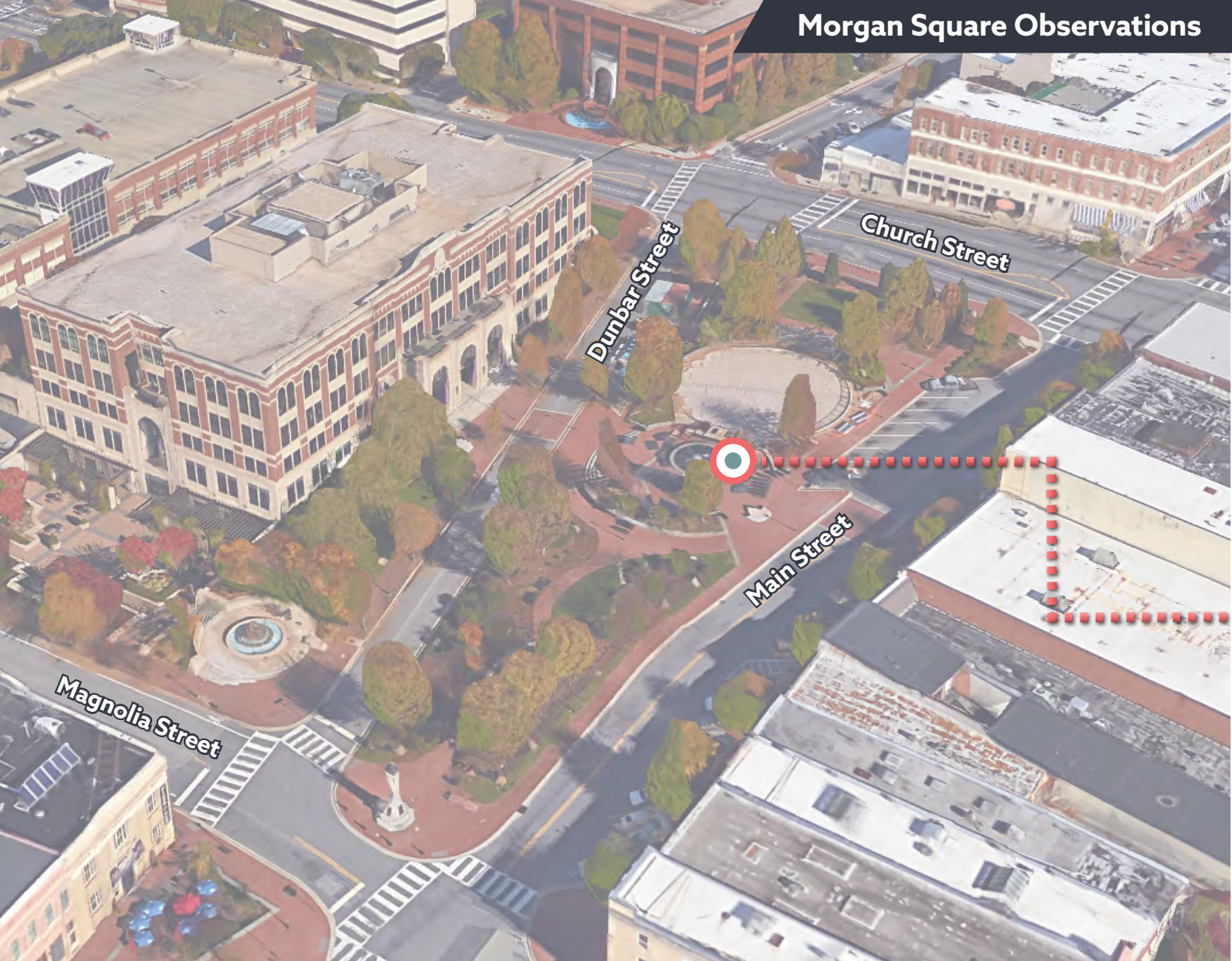
5

Main Street Opportunities: OPTION C - MAIN STREET

- Expand size of square to encompass Main Street right-of-way
- Non-traversable by regular vehicular traffic but possible access for fire trucks in emergency situations



Morgan Square Observations



1 Missing active ground floors with urban sidewalks, elevated plazas, and a curbsless street to encourage cross-square pedestrian activity

2 Limiting access to areas under tree canopy due to excess understory plantings

3 Limiting flexibility with fixed furnishings; creating impermeable edge and limiting access/visibility with fencing

4 Lacking iconic structure/kiosk along Church Street for vendors and/or flexible programming elements

5 Should Main Street be open, closed, or somewhere in between?

6 Missing the opportunity for an interactive water element with existing static fountain

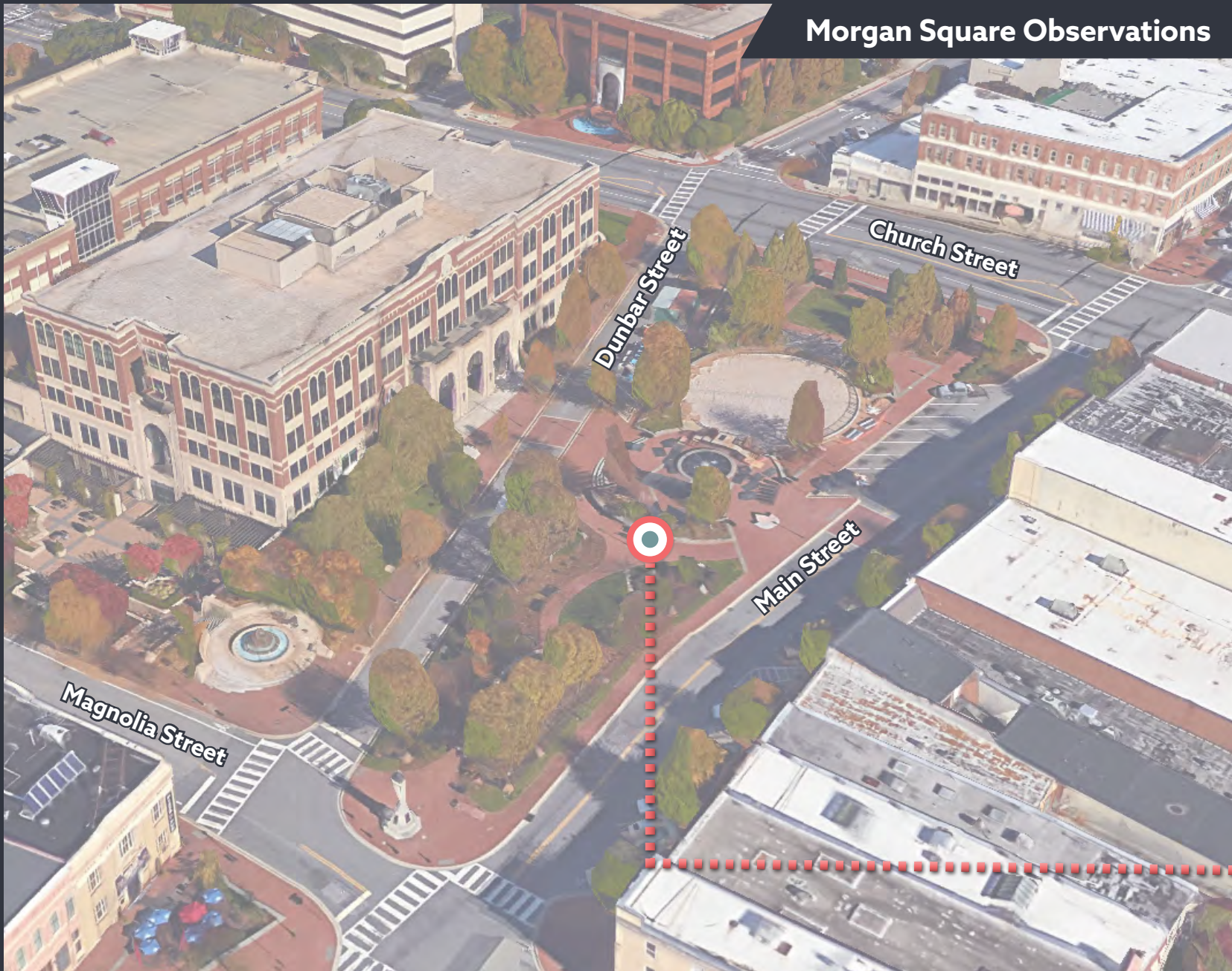
7 Complicating pedestrian routes with walls; need to carve staircase for access

6 The Fountain

- Existing fountain creates a physical barrier and makes the plaza inflexible for event programming
- Fountain lacks the ability to be interactive for the community
- The noise of the water fills the space when it is vacant



Morgan Square Observations



Missing active ground floors with urban sidewalks, elevated plazas, and a curbsless street to encourage cross-square pedestrian activity

1

Limiting access to areas under tree canopy due to excess understory plantings

2

Limiting flexibility with fixed furnishings; creating impermeable edge and limiting access/visibility with fencing

3

Lacking iconic structure/kiosk along Church Street for vendors and/or flexible programming elements

4

Should Main Street be open, closed, or somewhere in between?

5

Missing the opportunity for an interactive water element with existing static fountain

6

Complicating pedestrian routes with walls; need to carve staircase for access

7

7

The Upper and Lower Square Transition

- Wall is a barrier between the upper and lower square areas
- Lack of direct pedestrian route



A blue-tinted photograph of a city street intersection. In the foreground, a street sign for 'Main St' with '500' and an arrow pointing left is visible. A traffic light and a sign with a left-turn arrow and an up arrow labeled 'ONLY' are also present. The background features a large, multi-story building with a clock tower and a public square with a fountain and benches. The text 'What' is written in a large, white, sans-serif font, underlined, and 'Are the Key Goals?' is written in a similar font below it.

What

Are the Key Goals?

Key Project Goals



Activate the edges and establish ease of movement between Morgan Square and Main/Dunbar Streets.



Eliminate visual and physical barriers to entry, movement, and use.



Introduce interactive features and other design elements that will animate the Square and encourage exploration and fun.



Integrate lighting in support of a safe and secure environment, as well as to create a warm and friendly ambiance.



Achieve a comfortable balance between sun and shade to promote comfort and use, taking advantage of the Square's mature canopy trees.



Accommodate flexible programming, incorporating moveable site furnishings and seating.



Honor the history of downtown Spartanburg and Morgan Square; accentuate local character and tell the story of the place through appropriate material selection, interpretive signage, public art, etc.

A man with a beard and short hair, wearing a light-colored jacket over a white t-shirt, is riding a bicycle on a paved sidewalk. He is smiling and looking towards the camera. The background shows a building with large windows and a row of trees. The entire image has a teal/cyan color cast and a geometric pattern of overlapping triangles.

How

Do We Get There?

MORGAN SQUARE VERSION 6.5

STEP 1

Pre-RFP Vision and Identity Session



STEP 2

Issue RFP & Hire Design Consultant



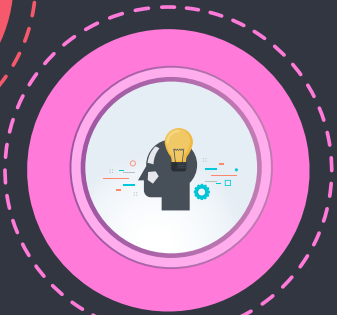
STEP 3

Schematic Design Process



STEP 4

Public Input on Schematic Design Options



STEP 5

Design Development & Construction Documents



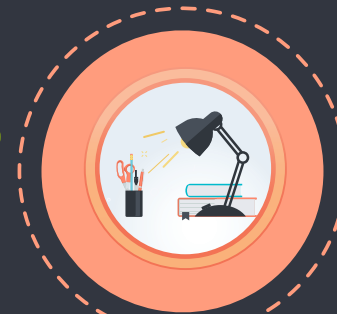
STEP 8

Construction of Design Improvements



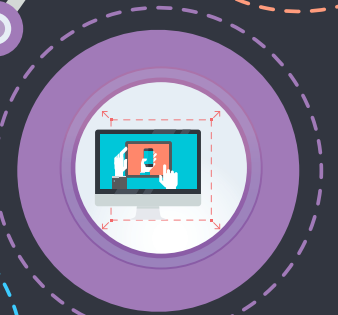
STEP 7

Public Bid of Project



STEP 6

Public Information Session



Project Team Structure



Project Scope Tasks

1

Project Management

4

Re-visioning & Schematic Design

2

Data Collections & Field Surveys

5

Design Development & Construction Documentation

3

Stakeholder & Community Engagement

6

Bidding and Construction Support Phase

RFQ General Information

Submission Method:

Electronic via the city bid portal at...

<https://www.cityofspartanburg.org/bid-opportunities>

Submission Schedule:



Format of Quals

- Maximum of **25 pages** excluding front and back covers, full resumes (not exceeding 1 page per person), and required Exhibits
- No section dividers
- Format the documents as facing pages for two-sided printing
- Appendices other than resumes are not allowed and will not be reviewed
- Weblinks to external relevant material may be included.
- 50 MB size limit

Content of Quals

- Cover Letter
- Project Management and Staffing
- Summary of Qualifications
- Project Understanding
- Project Approach and Schedule
- Project References
- Required Exhibits A-E

RFQ Exhibits

- **Exhibit A:** Bidder Conflict of Interest Disclosure and Government Compliance Certification Form
- **Exhibit B:** Drug Free Workplace Act Statement
- **Exhibit C:** Certification Regarding Debarment, Suspension, And Other Responsibility Matters
- **Exhibit D:** Affidavit Of Non-Collusion
- **Exhibit E:** Certification Regarding
- **M/WBE Compliance:** M/WBE Good Faith Effort Participation Commitment Contract **OR** Intent to Perform Contract with Own Workforce



Each proposer shall attest that they engaged in good faith efforts in an endeavor to achieve the City's M/WBE goal of 15%.

Thank You.

Q & A