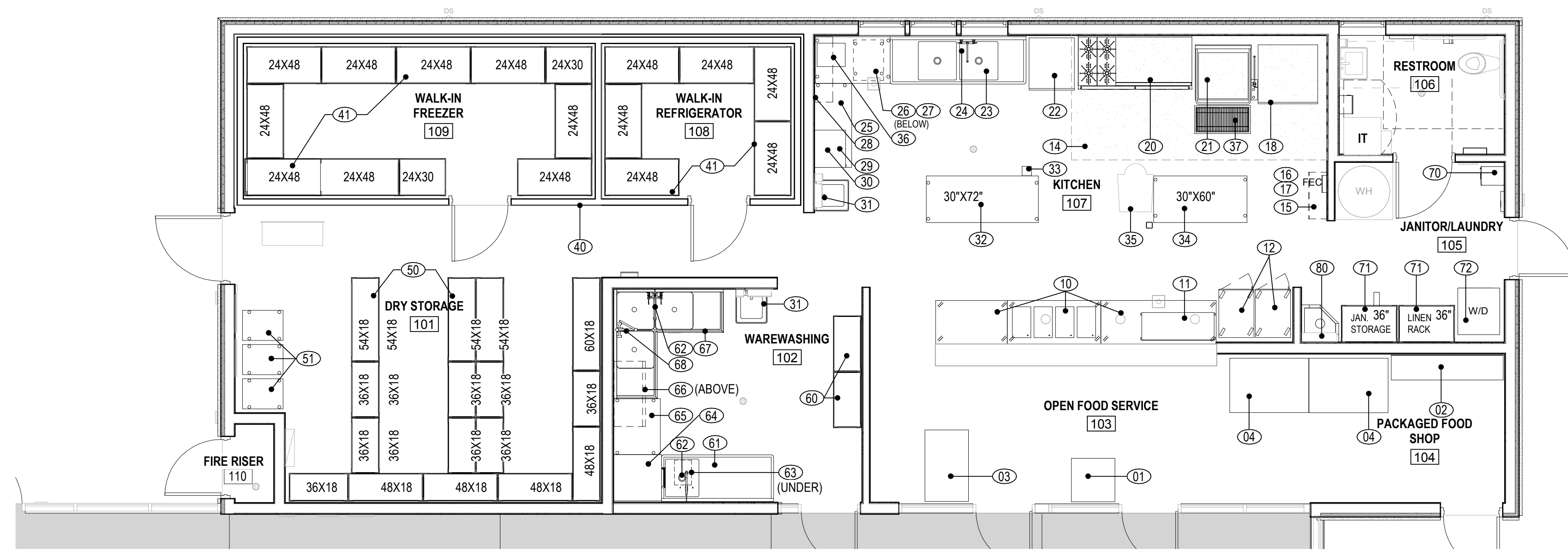
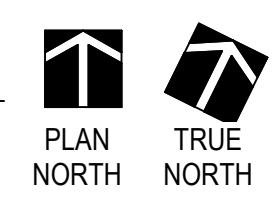


All ideas, arrangements and notes indicated on this drawing are owned by, and the property of, Roesling Nakamura Terada Architects, Inc. and were created, developed, for use on and in connection with the project. None of such ideas, arrangements, or notes shall be used by any person, firm, or corporation for any purpose whatsoever without the written permission of Roesling Nakamura Terada Architects, Inc. Filing of these drawings or applications with any public agency is not a publication of same. No reproduction is therefore permissible without the written consent of RNT.



1 PROPOSED EQUIPMENT PLAN
1/4" = 1'-0"



KITCHEN EQUIPMENT NOTES:

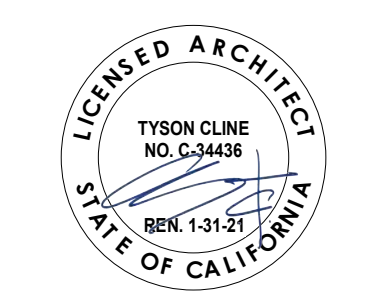
- ALL HARDWARE AND GAS KITCHEN EQUIPMENT SHALL BE INSTALLED WITH SEISMIC RESTRAINTS PER GUIDELINES FOR SEISMIC RESTRAINTS OF KITCHEN EQUIPMENT AS PUBLISHED BY SMACNA.
- WHERE ANCHORAGES ARE NOT SHOWN ON DRAWINGS OR IN THE GUIDELINES, THE FIELD INSTALLATION SHALL BE SUBJECT TO THE APPROVAL OF THE ARCHITECT.
- PROVIDE TYPICAL BACKING AT WALL MOUNTED ITEMS AND ITEMS SECURED TO WALL, REFER TO 15/AD-1.1.
- LEGS OF FIXED TABLES AND SINKS TO BE PROVIDED WITH FLANGE FEET AND FASTENED TO FLOOR. REFER TO 3/AD-1.2.
- SHELVES INSTALLED ON A WALL SHALL HAVE AT LEAST A ONE-INCH OPEN SPACE BETWEEN THE BACK EDGE OF THE WALL AND THE SHELF, OR THE BACK EDGE OF THE SHELF SHALL BE SEALED TO THE WALL WITH SILICONE SEALANT.
- SHELVES MOUNTED ON THE FLOOR SHALL BE INSTALLED ON ROUND, SIX-INCH TALL, METAL EQUIPMENT LEGS WITH A CLEAR UNOBSTRUCTED AREA BELOW, OR ON A PERMANENT, MINIMUM FOUR-INCH HIGH SELF-COVERED BASE.
- THERE SHALL BE MINIMUM 6" CLEAR BETWEEN THE LOWEST SHELF AND THE FLOOR.
- ALL EQUIPMENT SHALL BE CERTIFIED OR CLASSIFIED FOR SANITATION BY AN ANSI-ACCREDITED CERTIFICATION PROGRAM SUCH AS NSF INTERNATIONAL, ETL, UL, CSA, OR IAPMO.
- ALL SHOW AND DISPLAY CASES, COUNTERS, SHELVES, TABLES, REFRIGERATION EQUIPMENT, SINKS, AND OTHER EQUIPMENT USED IN CONNECTION WITH THE STORAGE, PREPARATION, SERVICE, AND DISPLAY OF FOOD, SHALL BE MADE OF NON-TOXIC, NON-CORROSIVE MATERIALS AND CONSTRUCTED AND INSTALLED TO BE READILY CLEANED.
- ALL EQUIPMENT SHALL BE INSTALLED ON SIX-INCH HIGH, ROUND, METAL LEGS OR APPROVED CASTERS; ATTACHED TO THE WALL WITH A MINIMUM SIX-INCH SPACE UNDERNEATH; OR SEALED TO THE FLOOR.
- ALL FLOOR SINKS SHALL BE INSTALLED FLUSH WITH THE FINISH FLOOR SURFACE, WITH APPROPRIATE GRATES.
- CONDENSATE SHALL BE DRAINED TO FLOOR SINK VIA A LEGAL AIRGAP. RUNS OF DRAIN LINES SHALL DESCEND AT MIN. 1/4" PER FOOT, SHALL BE AT LEAST 3/4" FROM THE WALL AND 6" OFF THE FLOOR, AND SHALL TERMINATE MIN. 1" ABOVE THE RIM OF THE FLOOR SINK.
- PROVIDE SPLASHGUARD WHERE HANDWASH SINK IS LESS THAN 24 INCHES FROM ADJACENT EQUIPMENT.
- REFRIGERATOR COOLING COILS, RELATED ELECTRICAL, DRAINAGE, AND REFRIGERANT LINES SHALL BE INSTALLED IN A SAFE, EASILY CLEANABLE MANNER. DRAINAGE AND REFRIGERANT LINES SHALL BE OF NON-TOXIC MATERIALS OR PROPERLY INSULATED OR COVERED WITH AN APPROVED, EASILY CLEANABLE AND NON-TOXIC MATERIAL.
- PLUG CONNECTIONS ARE NEMA 5-15P U.N.O.
- EQUIPMENT NOTED TO BE MOUNTED ON SEISMIC FEET, REFER TO STRUCTURAL FOR ATTACHMENT.

IDENTIFICATION STAMP
DIV. OF THE STATE ARCHITECT
OFFICE OF REGULATION SERVICES
03-119638

ACS _____ FLS _____ SS _____



Roesling Nakamura
Terada Architects
285 N Ventura Ave # 102
Ventura, California
P: 805.626.5330
F: 805.626.5350
www.RNTArchitects.com



OJAI UNIFIED SCHOOL DISTRICT

DINING HALL AND KITCHEN (BLDG B) AT MATILIJIA JUNIOR HIGH SCHOOL

CONSTRUCTION DOCUMENTS

Revisions

No.	Description	Date

Sheet Name
EQUIPMENT PLAN & SCHEDULE

RNT Job No. 17759.04
Date 02/04/2019
Drawn by EV
Checked by TB
Sheet Number

A-1.4

EQUIPMENT SCHEDULE

MARK	QUANTITY	DESCRIPTION	MANUFACTURER / MODEL / NOTES	ELECTRICAL	WATER	WASTE	GAS	BASE/MOUNTING
01	1	CASH REGISTER STAND WITH CUSTOMER TRAY SLIDE	VOLLRATH / 37015	120V 10.0A PLUG	-	-	-	CASTERS
02	3	WALL SHELVES, STAINLESS STEEL	JOHN BOOS / PB-SRW-82	-	-	-	-	WALL MOUNTED MAX. 48" A.F.F.
03	1	CASH REGISTER STAND WITH CUSTOMER TRAY SLIDE	VOLLRATH / 37021	120V 10.0A PLUG	-	-	-	CASTERS
04	2	OPEN MERCHANDISER	TURBO AIR / TOM-50LW-N	115V 6.9A PLUG	-	SELF-CONT.	-	CASTERS
10	1	MODULAR SERVING COUNTER WITH HOT FOOD WELLS	VOLLRATH / SIGNATURE SERVER - MODEL 37023; MODEL 37040; MODEL 37021 / INCLUDES INTEGRAL SNEEZE GUARD WITH SIDE PANELS AT HOT FOOD WELLS	120V 11.2A PLUG NEMA 5-30P	-	SELF-CONT.	-	CASTERS
11	1	DISPLAY MERCHANDISER, HEATED	HATCO / GRPWS-4818T	208-240V 16.0A PLUG NEMA L14-20P	-	-	-	ON SERVING COUNTER
12	2	CABINET, COOK/HOLD/OVEN	CRES COR / 1000-CH-SS-SPLIT-DE	208-240V 14.0A	-	-	-	CASTERS
14	1	VENTILATION HOOD WITH MAKEUP AIR	CAPTIVEAIRE / 6012SND-2-PSP-F	DC CONTROLS	-	-	-	N/A
15	1	HOOD FIRE SUPPRESSION SYSTEM	ANSUL - 3.0/3.0	110V	-	-	-	WALL MOUNTED
17	1	HOOD SUPPLY AND EXHAUST FANS	EXHAUST FAN MODEL DU180HFA - 3 HP, 3150 CFM; SUPPLY MODEL AD-20D 3150 CFM, 3 HP FAN	208V 9.5A / 3.8A	-	-	-	ROOF MOUNTED
18	1	CONVECTION OVEN, DOUBLE DECK	BLODGETT / ZEPH-200-G-DBL	115V 6.0A PLUG	-	-	3/4"	6" LEGS / SEISMIC FEET
20	1	RANGE WITH GRIDDLE	SOUTHBEND / 4721DD-3TR	115V 11.8A PLUG	-	-	3/4"	6" LEGS / SEISMIC FEET
21	1	TILTING SKILLET	SOUTHBEND / BGLTS-30 / INCLUDES OPTIONAL FAUCET WITH HOT AND COLD PRESSURIZED WATER	115V 4.0A PLUG	3/8" HOT/COLD	-	3/4"	6" LEGS / SEISMIC FEET
22	1	HEATED HOLDING CABINET	METRO / C569L-SDC-U	120V 12.0A PLUG NEMA 5-20P	-	-	-	CASTERS
23	1	TWO (2) COMPARTMENT SINK	JOHN BOOS / 2PB244-2D24	-	-	1-1/2" INDIRECT	-	6" LEGS
24	1	MIXING FAUCET	JOHN BOOS / PBF-14-SLF-X	-	1/2" HOT/COLD	-	-	SPLASH MOUNTED
25	1	STAINLESS STEEL CORNER PREP TABLE	JOHN BOOS / ST6R-Q077097-001 CUSTOM DIMENSIONS 54"L X 30"W X 84"L X 24"W. CUSTOM SPLASH GUARD PANEL AT LEFT SIDE.	-	-	-	-	6" LEGS
26	1	ICE CUBER WITH BIN	SCOTSMAN / CU2026MA-1	115V 5.8A	3/8" FLARE INLET	3/4" INDIRECT	-	6" LEGS
27	1	WATER FILTER (FOR ICE CUBER)	SCOTSMAN / AP1-P / INSTALL IN LINE BEFORE ICE CUBER ITEM 26	-	-	-	-	WALL MOUNTED
28	1	WALL SHELVES, STAINLESS STEEL	JOHN BOOS / BHS1248-16/304	-	-	-	-	WALL MOUNTED
29	1	MICROWAVE SHELF	JOHN BOOS / BMS2024 / MOUNT AT 65" A.F.F.	-	-	-	-	WALL MOUNTED
30	1	MICROWAVE	AMANA COMMERCIAL / RCS10DSE / LEFT HINGE	120V/13A PLUG	-	-	-	ON SHELF
31	2	HAND SINK	JOHN BOOS PBHS-W-1416ADA	-	1/2" HOT/COLD	1-1/2" INDIRECT	-	WALL MOUNTED

MARK	QUANTITY	DESCRIPTION	MANUFACTURER / MODEL / NOTES	ELECTRICAL	WATER	WASTE	GAS	BASE/MOUNTING
32	1	WORK TABLE, STAINLESS STEEL, WITH POT RACK	JOHN BOOS / ST6-3072SSK	-	-	-	-	6" LEGS
33	1	CAN OPENER, MANUAL	EDLUND / S-11	-	-	-	-	MOUNT TO WORK TABLE
34	1	WORK TABLE, STAINLESS STEEL, WITH OVERSHELF	JOHN BOOS / ST6-3060SSK	-	-	-	-	6" LEGS
35	1	PLANETARY MIXER	HOBART / HL400-4STD	100-120 V 9.3A	-	-	-	6" LEGS
36	1	FOOD PROCESSOR	ROBOT COUPE / R2 DICE CLR	120V 7A PLUG	-	-	-	ON WORK TABLE
37	1	FLOOR TROUGH	JOHN BOOS / FTFG	-	-	3"	-	FLOOR, REF. 14/AD-1.2
40	1	BUILT-IN COMBO WALK-IN FREEZER / COOLER	DURACOLD, EMBOSSED GALV. STL. REFER TO A-1.41, WITH COPELAND REFRIGERATOR 2HP SCROLL COMPRESSOR ZS15KAE-TF5 AND EVAPORATOR LCA6 / FREEZER 6HP SCROLL COMPRESSOR ZF18K4E-TF5 AND EVAPORATOR LCE6	230V, 9.5A AND 19.6A COMPRESSORS / 115V, 2.9A AND 2.0A EVAPORATORS	-	INDIRECT	-	FLOOR MOUNTED
41	17	PLASTIC SHELVING UNIT	CAMBRO / CBU244872V4580 (4 TIER, QTY. 5) / CBA243072V4580 (4 TIER, QTY. 2) / CBA244872V4580 (4 TIER, QTY. 7)	-	-	-	-	6" LEGS
50	19	WIRE DRY STORAGE SHELVING	FOCUS FOODSERVICE / CMSV1860 (4 TIER, QTY. 1) / CMSV1836 (4 TIER, QTY. 10) / CMSV1848 (4 TIER, QTY. 4) / CMSV1854 (4 TIER, QTY. 4)	-	-	-	-	6" LEGS
51	6	CABINET, ENCLOSED	CAMBRO / UPC300110 / WITH CAMDOLLY CD300110 QTY. 3 AND CAMCHILLER CP1220159 QTY. 6	-	-	-	-	CASTERS
60	2	WIRE SHELVING (MOBILE DISH RACK)	THUNDER GROUP / CMSV1836 (4 TIER, QTY. 2)	-	-	-	-	6" LEGS
61	1	SOILED DISHTABLE	JOHN BOOS / SDT6-S725BK-L	-	-	-	-	6" LEGS
62	1	PRE-RINSE FAUCET ASSEMBLY FOR SOILED DISHTABLE AND 3-COMP SINK	T&S BRASS & BRONZE WORKS / 5PR-8W00	-	1/2" HOT/COLD	-	-	SPLASH MOUNTED
63	1	SOILED DISHTABLE STRAINER UNIT	COMMERCIAL STRAINERS CO. / GDR-A18	-	-	2" INDIRECT	-	MOUNTED TO SINK
64	1	DISHWASHER	HOBART / AM15VLT-BUILDUP	208-240V 43.0A	1/2" HOT/COLD	1-1/2" INDIRECT	-	6" SEISMIC FEET
65	1	CLEAN DISHTABLE	JOHN BOOS / CDT6-S365BK-R WITH UNDERSHELF CDT6-LS24SSK	-	-	-	-	6" LEGS
66	1	DISHTABLE SORTING SHELF	JOHN BOOS / PB-SRW-42	-	-	-	-	WALL MOUNTED
67	1	3 COMPARTMENT SINK WITH SPLASH MOUNT FAUCET	JOHN BOOS / 3PB244-2D24 (SINK) WITH PBF-14-SLF (FAUCET). CUSTOM SPLASH GUARD PANEL AT RIGHT SIDE.	-	1/2" HOT/COLD	1-1/2" INDIRECT	-	6" LEGS
68	1	PRE-RINSE FAUCET FOR 3-COMP SINK	T&S BRASS & BRONZE WORKS / B-0133-ADF10-B	-	1/2" HOT/COLD	-	-	SPLASH MOUNTED
70	1	LOCKER	WINHOLT / WL-66/15 (6-TIER)	-	-	-	-	FLOOR MOUNTED
71	2	WIRE SHELVING (LINEN AND JANITORIAL RACKS)	THUNDER GROUP / CMSV2436 (4 TIER, QTY. 2)	-	-	-	-	6" LEGS
72	1	COMMERCIAL STACKED WASHER AND DRYER	SPEED QUEEN LTGESASP115TW01	120V PLUG	3/4" HOT/COLD	2" STANDPIPE	1/2"	FLOOR MOUNTED
80	1	MOP RACK	PB-MSS824-X / 24" RACK WITH (3) HOOKS AND (2) LOCKING CAM HOLDERS	-	-	-	-	WALL MOUNTED