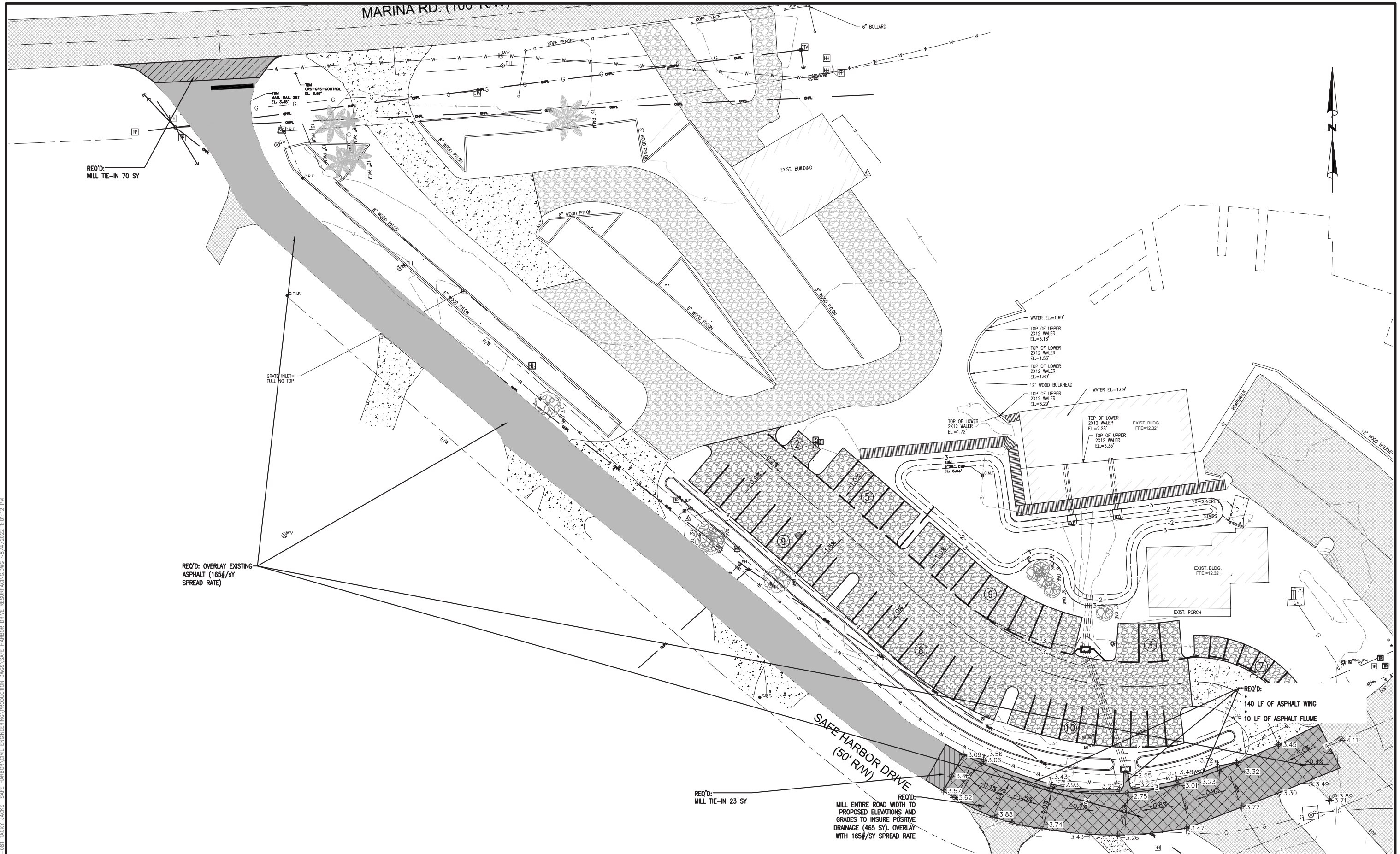


DWG INFO: S:\1-CLIENTS\22-081-TACKY JACKS - SAFE HARBOR\CIVIL\ENGINEERING\PRODUCTION\DWG\SAFE HARBOR_DRIVE_RESURFACING.DWG - 8/4/2022 11:01:12 PM



REQ'D: MILL TIE-IN 70 SY

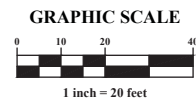
REQ'D: OVERLAY EXISTING ASPHALT (165#/SY SPREAD RATE)

REQ'D: MILL TIE-IN 23 SY

REQ'D: MILL ENTIRE ROAD WIDTH TO PROPOSED ELEVATIONS AND GRADES TO INSURE POSITIVE DRAINAGE (465 SY). OVERLAY WITH 165#/SY SPREAD RATE

REQ'D: 140 LF OF ASPHALT WING
10 LF OF ASPHALT FLUME

NUMBER:	REVISION:	DATE:



30673 Sgt. E. I. "Boots" Thomas Drive, Spanish Fort, AL 36527 Phone: (251) 544-7900

OVERALL LAYOUT
SAFE HARBOR DRIVE IMPROVEMENTS
CITY OF ORANGE BEACH, AL

SCALE: NTS
DATE: 8/03/2022
DRAWN BY: JHR
CHECKED BY: JHR
SHEET: 1 OF 1