

INDIAN RIVER COUNTY

BOARD OF COUNTY COMMISSIONERS

FDOT FPN# 431759-2-54-01

PUBLIC WORKS DIRECTOR:
RICHARD B. SZPYRKA, P.E.

COUNTY ENGINEER:
JAMES W. ENNIS, P.E.



57TH STREET BRIDGE AT 66TH AVENUE

Sheet List Table

Sheet Number	Sheet Title
C-1	COVER SHEET
B-1	PROPOSED BRIDGE CROSS SECTION
B-2	GENERAL NOTES, PRESTRESSED MEMBERS NOTES AND CONSTRUCTION NOTES
B-3	SUMMARY OF QUANTITIES
B-4	PROPOSED BRIDGE PLAN
B-5	EXISTING AND PROPOSED BRIDGE CROSS SECTIONS
B-6	PARTIAL SIDEWALK DEMOLITION PLAN
B-7	ENLARGED SLAB PLAN AT SIDEWALK
B-8	APPROACH SLAB PLANS
B-9	MISCELLANEOUS DETAILS
B-10	MISCELLANEOUS DETAILS (2)
B-11	LOAD RATING CHART

F.D.O.T. Standard Sheets

Sheet Number	Sheet Title
410	CONCRETE BARRIER WALL (CANTILEVERED WALL), (SHEET 4 OF 25)
420	TRAFFIC RAILING BARRIER - (32" F SHAPE), (SHEETS 1 - 4)
423	TRAFFIC RAILING BARRIER - (32" VERTICAL SHAPE), (SHEETS 1 - 3)
821	ALUMINUM PEDESTRIAN/BICYCLE BULLET RAILING DETAILS FOR TRAFFIC RAILING BARRIER - (32" F SHAPE)
822	ALUMINUM PEDESTRIAN/BICYCLE BULLET RAILING DETAILS (SHEETS 1 - 3)
20910	APPROACH SLABS (RIGID PAVEMENT APPROACHES) (SHEETS 1 - 2)



THESE PLANS HAVE BEEN PREPARED IN ACCORDANCE WITH AND ARE GOVERNED BY THE STATE OF FLORIDA, DEPARTMENT OF TRANSPORTATION, DESIGN STANDARDS. (BOOKLET DATED JANUARY, 2016)

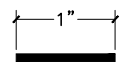
GOVERNING SPECIFICATIONS: THE FLORIDA DEPARTMENT OF TRANSPORTATION, STANDARD SPECIFICATIONS FOR ROAD AND BRIDGE CONSTRUCTION, DATED 2016, AND SPECIAL PROVISIONS THERETO IF IN NOTED IN THE CONTRACT SPECIFICATIONS FOR THIS PROJECT.

ATTENTION IS DIRECTED TO THE FACT THAT THESE PLANS MAY HAVE BEEN ALTERED IN SIZE BY REPRODUCTION. THIS MUST BE CONSIDERED WHEN OBTAINING SCALED DATA.

ENGINEER'S CERTIFICATION: I HEREBY CERTIFY THAT THE ATTACHED PLANS AND DESIGN ARE IN GENERAL COMPLIANCE WITH THE DESIGN STANDARDS AND CRITERIA IN EFFECT ON THIS DATE FOR INDIAN RIVER COUNTY ENGINEERING DEPARTMENT AND THE STATE OF FLORIDA DEPARTMENT OF TRANSPORTATION.

DATE _____ PROFESSIONAL ENGINEER # _____

VERIFY SCALE



BAR IS ONE INCH ON ORIGINAL DRAWINGS. ADJUST SCALES AS NECESSARY.

NOTE: THE SCALE OF THESE DRAWINGS MAY HAVE CHANGED DUE TO REPRODUCTION.



DATE: Dec 17, 2020 - 10:02am C:\working\wg1\craig.burkhardt\40399621\COVER SHEET.dwg



NO.	REVISION	DATE	BY



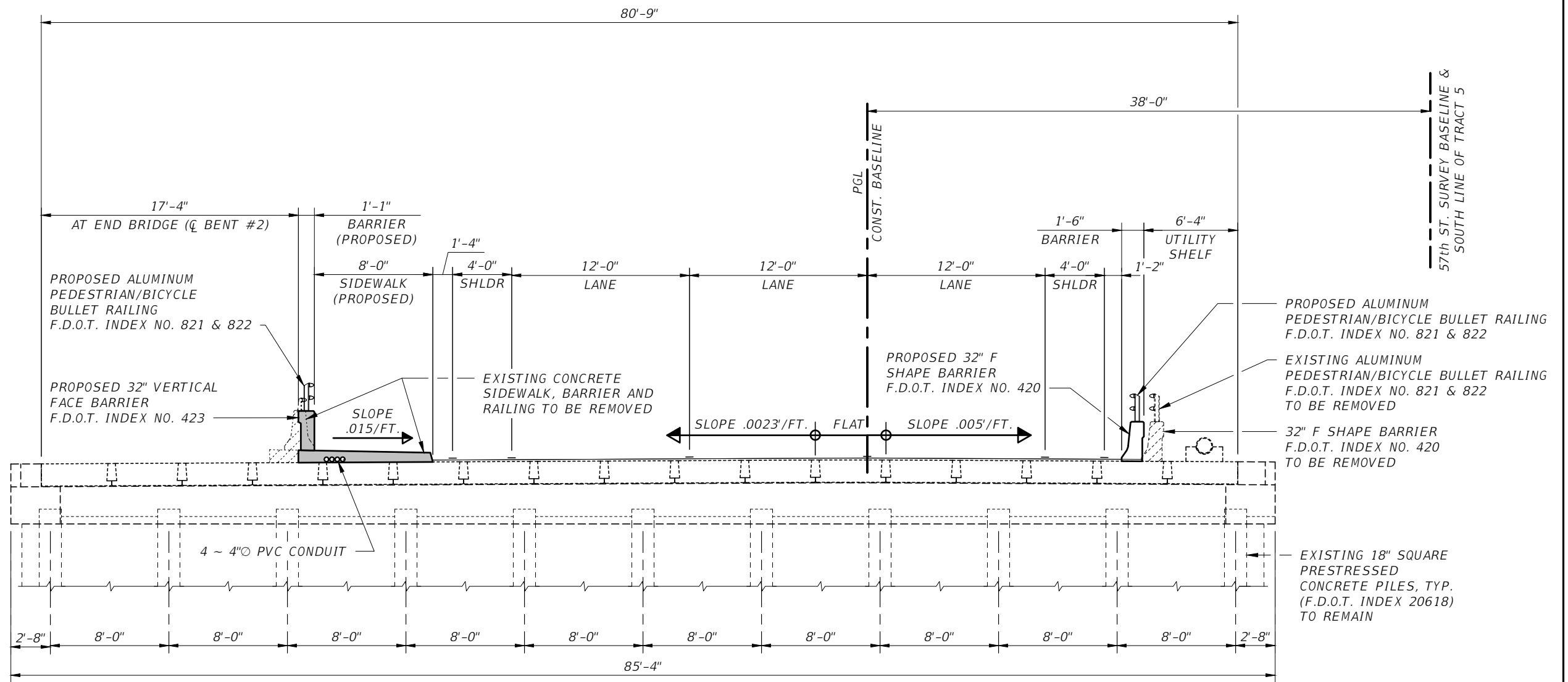
DEPARTMENT OF PUBLIC WORKS
ENGINEERING DIVISION

Scale: AS NOTED
Approved:
Drawn: C.A.B.
Checked: T.A.D.
Date: DECEMBER 2020
Field Book No:

PROJECT:
PROPOSED BRIDGE MODIFICATIONS FOR:
66th AVENUE - PHASE 1A
IRC 1505
INDIAN RIVER COUNTY, FLORIDA

SEAL
Timothy Alan DeLand-71588
FLORIDA P.E. NAME & NUMBER

SHEET
C-1
PROJECT NO.
16162296.00

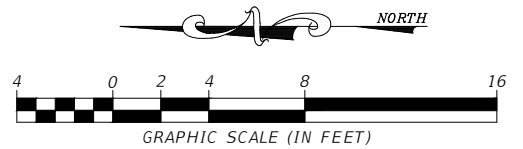


BRIDGE CROSS SECTION LOOKING EAST

VERIFY SCALE

 BAR IS ONE INCH ON ORIGINAL DRAWINGS. ADJUST SCALES AS NECESSARY.

NOTE: THE SCALE OF THESE DRAWINGS MAY HAVE CHANGED DUE TO REPRODUCTION.



WGL
 2035 Vista Parkway
 West Palm Beach, FL 33411
 Phone No. 561.687.2220
 Fax No. 561.687.1110
 Cert No. 6091 - LB No. 7055

NO.	REVISION	DATE	BY

DEPARTMENT OF PUBLIC WORKS
 ENGINEERING DIVISION

Scale: AS NOTED
 Approved:
 Drawn: C.A.B.
 Checked: T.A.D.
 Date: DECEMBER 2020
 Field Book No:

PROJECT:
**PROPOSED BRIDGE MODIFICATIONS FOR:
 66th AVENUE - PHASE 1A
 IRC 1505
 INDIAN RIVER COUNTY, FLORIDA**

SEAL
 Timothy Alan DeLand-71588
 FLORIDA P.E. NAME & NUMBER

SHEET
B-1
 PROJECT NO.
16162296.00

DATE: Dec 17, 2020 - 10:03am C:\pwworking\wgl\craig.burkhardt\16162296\PROPOSED BRIDGE CROSS SECTION.dwg

GENERAL NOTES

GENERAL SPECIFICATIONS:

FLORIDA DEPARTMENT OF TRANSPORTATION STANDARD SPECIFICATION FOR ROAD AND BRIDGE CONSTRUCTION (2015 EDITION).

DESIGN SPECIFICATION:

7TH EDITION OF THE AASHTO LRFD BRIDGE DESIGN SPECIFICATIONS 2014 WITH CURRENT INTERIMS. 2015 EDITION OF THE F.D.O.T. STRUCTURE DESIGN GUIDELINES WITH CURRENT INTERIMS.

DESIGN LOADING:

LIVE LOAD:	HL-93 WITH DYNAMIC LOAD ALLOWANCE	
DEAD LOAD:	REINFORCED CONCRETE	0.15 K.C.F.
	NORTH SIDEWALK	1.02 K/FT
	32" VERTICAL SHAPE AND ALUMINUM RAILING	0.395 K/FT
CONSTRUCTION LOAD:	TEMPORARY TYPE "K" BARRIER	0.9 K/FT
UTILITY LOAD:	12" O D.I.P.	0.05 K.L.F.

CONCRETE:

NOTE: CONCRETE TO BE IN COMPLIANCE WITH F.D.O.T. SPECIFICATIONS 346.

CONCRETE CLASS	MINIMUM 28 DAY COMPRESSIVE STRESS (KSI)	LOCATION OF CONCRETE IN STRUCTURE
CLASS II	FC' = 3.4	CAST-IN-PLACE SIDEWALK, BARRIER
CLASS II (BRIDGE DECK)	FC' = 4.5	APPROACH SLABS

CONCRETE:

- PROVIDE 3/4 INCH CHAMFERS ON ALL EXPOSED EDGES AND CORNERS EXCEPT AS OTHERWISE NOTED.
- CONSTRUCTION JOINTS WILL BE PERMITTED ONLY AT THE LOCATIONS INDICATED ON THE PLANS, ADDITIONAL CONSTRUCTION JOINTS OR ALTERATIONS TO THOSE SHOWN SHALL REQUIRE APPROVAL BY THE ENGINEER.

REINFORCEMENT:

- REINFORCEMENT SHALL BE ASTM A-615, GRADE 60. SPIRAL TIES FOR PRESTRESSED CONCRETE PILES SHALL BE MANUFACTURED FROM COLD DRAWN STEEL WIRE MEETING THE REQUIREMENTS OF ASTM A82.
- ALL DIMENSIONS PERTAINING TO LOCATION OF REINFORCING ARE TO CENTERLINE OF BARS EXCEPT WHERE THE CLEAR DIMENSION IS SHOWN TO FACE OF CONCRETE.
- REINFORCEMENT DETAIL DIMENSIONS ARE OUT-TO-OUT OF BARS.

MINIMUM CONCRETE COVER:

CIP SUPERSTRUCTURE = 2 IN. (TYPICAL EXCEPT AS NOTED).

CIP SUBSTRUCTURE/BENT CAP = 4 1/2 IN. FOR EXTERNAL SURFACES CAST AGAINST EARTH.
CIP SUBSTRUCTURE/BENT CAP = 4 IN. FOR OTHER EXTERNAL SURFACES.

DESIGN METHOD:

ALL ELEMENTS WERE DESIGNED USING THE LRFD (LOAD AND RESISTANCE FACTOR DESIGN).

SURFACE FINISH:

ALL EXPOSED SURFACES OF END BENT WING WALLS, BARRIERS AND SUPERSTRUCTURE FASCIA SHALL RECEIVE A "CLASS 5 APPLIED FINISH COATING". SEE CLASS 5 FINISH DETAIL.

ENVIRONMENT:

SUPERSTRUCTURE:	SLIGHTLY AGGRESSIVE
SUBSTRUCTURE:	SLIGHTLY AGGRESSIVE
LOCATION:	INLAND

DATUM:

ALL ELEVATIONS SHOWN ARE IN N.A.V.D. 88, UNLESS NOTED OTHERWISE.

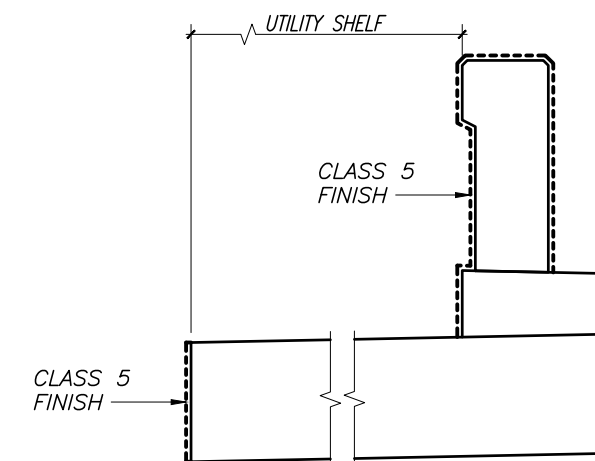
CONSTRUCTION NOTES

EQUIPMENT ON UNITS:

BEFORE HEAVY CONSTRUCTION EQUIPMENT IS PERMITTED ON THE STRUCTURE DURING CONSTRUCTION, SKETCHES SHOWING THE AXLE SPACING AND ANTICIPATED LOADINGS SHALL BE SUBMITTED TO AND APPROVED BY THE ENGINEER.

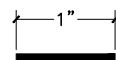
MISCELLANEOUS NOTES

- FLOATING TURBIDITY BARRIER WITH FINE MESH SHALL BE USED IN ACCORDANCE WITH F.D.O.T. STANDARD SPECIFICATIONS, SECTION 104.
- ALL DIMENSIONS IN THESE PLANS ARE MEASURED IN FEET EITHER HORIZONTALLY OR VERTICALLY. U.O.N.



CLASS 5 FINISH DETAIL
NO SCALE

VERIFY SCALE



BAR IS ONE INCH ON ORIGINAL DRAWINGS. ADJUST SCALES AS NECESSARY.

NOTE: THE SCALE OF THESE DRAWINGS MAY HAVE CHANGED DUE TO REPRODUCTION.



2035 Vista Parkway
West Palm Beach, FL 33411
Phone No. 561.687.2220
Fax No. 561.687.1110
Cert No. 6091 - LB No. 7055

NO.	REVISION	DATE	BY



DEPARTMENT OF PUBLIC WORKS
ENGINEERING DIVISION

Scale: AS NOTED
Approved:
Drawn: C.A.B.
Checked: T.A.D.
Date: DECEMBER 2020
Field Book No:

PROJECT:
PROPOSED BRIDGE MODIFICATIONS FOR:
66th AVENUE - PHASE 1A
IRC 1505
INDIAN RIVER COUNTY, FLORIDA

SEAL
Timothy Alan DeLand-71588
FLORIDA P.E. NAME & NUMBER

SHEET
B-2
PROJECT NO.
16162296.00

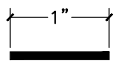
Contractor shall verify all dimensions and quantities prior to construction and fabrication. Discrepancies shall be brought to the attention of the Engineer before construction.

SUMMARY OF QUANTITIES

ITEM NO.	ITEM	NO. REQUIRED	UNIT	QUANTITY	AS BUILT
	BRIDGE				
110-3	DEMOLITION AND REMOVAL OF EXISTING SIDEWALKS AND BARRIERS		L. S.	1	
521-5-1	CONCRETE TRAFFIC RAILING BARRIER - (32" F SHAPE)		L. F.	41'-0"	
521-5-4	CONCRETE TRAFFIC RAILING BARRIER - (32" VERTICAL SHAPE)		L. F.	41'-0"	
521-72-3	SHOULDER CONCRETE BARRIER WALL (INDEX 410 - CANTILEVER WALL)		L. F.	47'-4"	
460-70-2	ALUMINUM PEDESTRIAN/BICYCLE BULLET BARRIER RAILING		L. F.	41'-0"	
	(SIDEWALKS)				
400-2-4	CLASS II CONCRETE		Cu. Yds.	6.0	
415-1-9	REINFORCING STEEL		Lbs.	2,553	
	(APPROACH SLABS)				
400-2-10	CLASS II CONCRETE		Cu. Yds.	58.0	
415-1-9	REINFORCING STEEL		Lbs.	11,380	
715-2117	4"Ø PVC CONDUIT		L. F.	156'-0"	


DATE: Dec. 17, 2020 - 10:02am C:\pwworking\wgl\craig.burkhardt\16162296\SUMMARY OF QUANTITIES.dwg

VERIFY SCALE




BAR IS ONE INCH ON ORIGINAL DRAWINGS. ADJUST SCALES AS NECESSARY.

NOTE: THE SCALE OF THESE DRAWINGS MAY HAVE CHANGED DUE TO REPRODUCTION.

2035 Vista Parkway
West Palm Beach, FL 33411
Phone No. 561.687.2220
Fax No. 561.687.1110
Cert No. 6091 - LB No. 7055

NO.	REVISION	DATE	BY



DEPARTMENT OF PUBLIC WORKS
ENGINEERING DIVISION

Scale: AS NOTED
Approved:
Drawn: C.A.B.
Checked: T.A.D.
Date: DECEMBER 2020
Field Book No:

PROJECT:
PROPOSED BRIDGE MODIFICATIONS FOR:
66th AVENUE - PHASE 1A
IRC 1505
INDIAN RIVER COUNTY, FLORIDA

SEAL

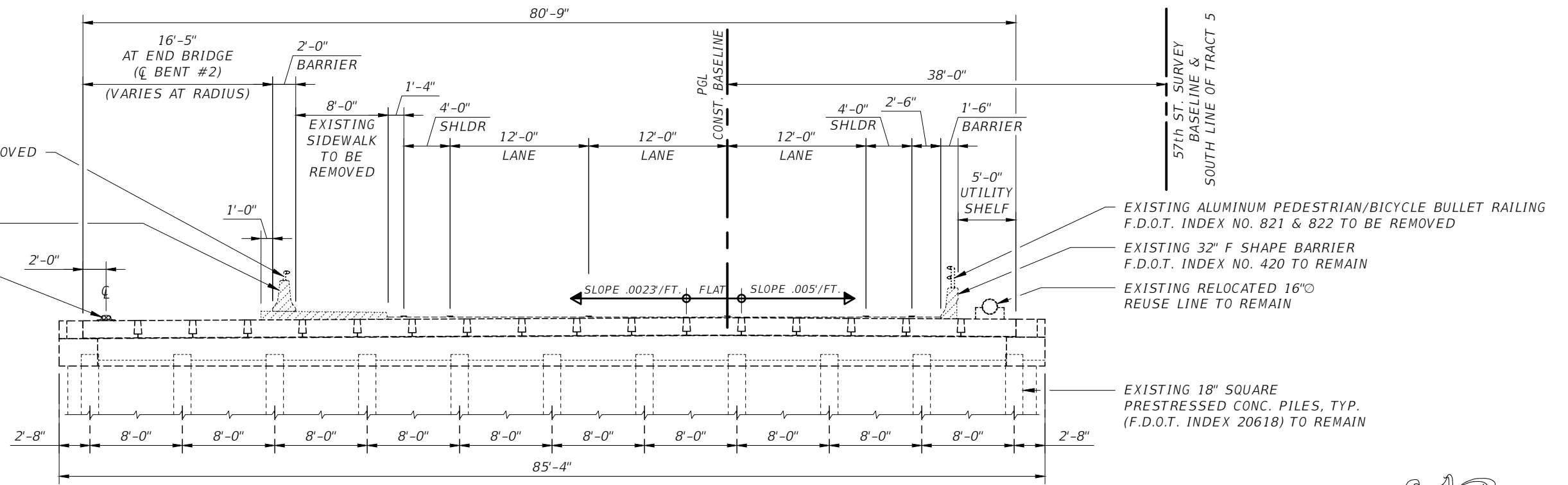
Timothy Alan DeLand-71588

FLORIDA P.E. NAME & NUMBER

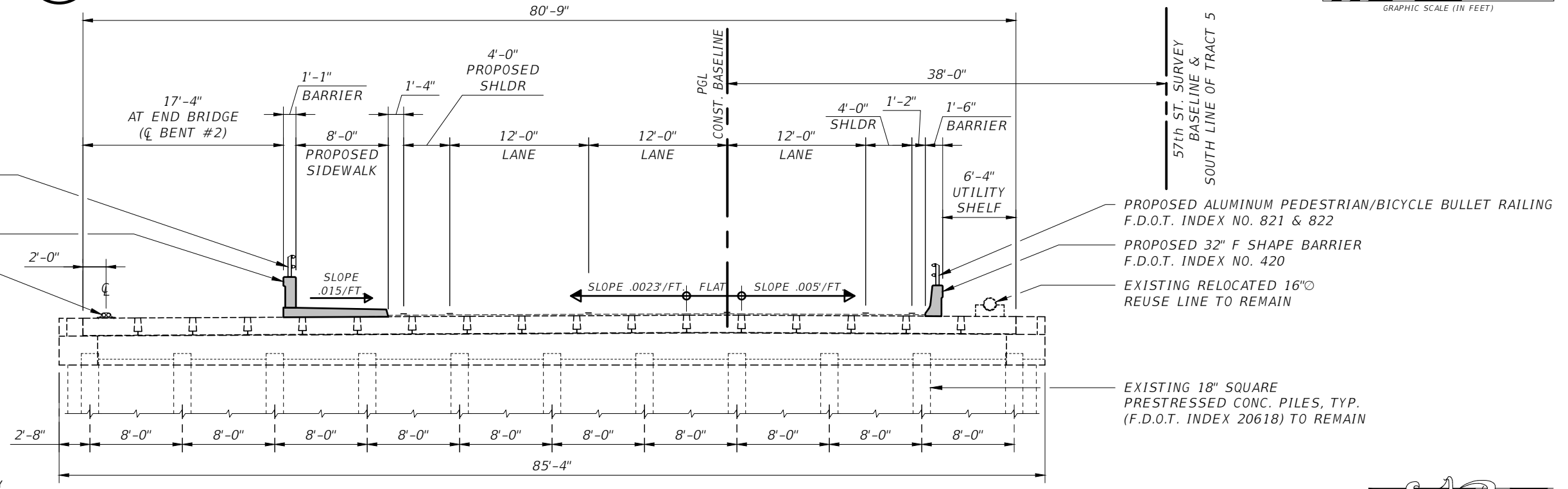
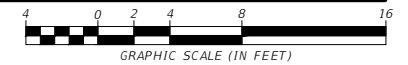
SHEET

B-3

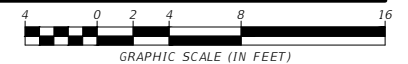
PROJECT NO.
16162296.00



A EXISTING BRIDGE CROSS SECTION LOOKING EAST



B PROPOSED BRIDGE CROSS SECTION LOOKING EAST



EXISTING ALUMINUM PEDESTRIAN BULLET RAILING F.D.O.T. INDEX NO. 822 TO BE REMOVED
 EXISTING TEMPORARY CONCRETE BARRIER F.D.O.T. INDEX NO. 415 TO BE REMOVED
 2 ~ 4" SCH. 40 TEMPORARY PVC SLEEVES

EXISTING ALUMINUM PEDESTRIAN/BICYCLE BULLET RAILING F.D.O.T. INDEX NO. 821 & 822 TO BE REMOVED
 EXISTING 32" F SHAPE BARRIER F.D.O.T. INDEX NO. 420 TO REMAIN
 EXISTING RELOCATED 16" REUSE LINE TO REMAIN

PROPOSED ALUMINUM PEDESTRIAN BICYCLE BULLET RAILING F.D.O.T. INDEX NO. 821 & 822
 PROPOSED 32" VERTICAL SHAPE BARRIER F.D.O.T. INDEX NO. 423
 2 ~ 4" SCH. 40 TEMPORARY PVC SLEEVES

PROPOSED ALUMINUM PEDESTRIAN/BICYCLE BULLET RAILING F.D.O.T. INDEX NO. 821 & 822
 PROPOSED 32" F SHAPE BARRIER F.D.O.T. INDEX NO. 420
 EXISTING RELOCATED 16" REUSE LINE TO REMAIN

EXISTING 18" SQUARE PRESTRESSED CONC. PILES, TYP. (F.D.O.T. INDEX 20618) TO REMAIN

VERIFY SCALE

 BAR IS ONE INCH ON ORIGINAL DRAWINGS. ADJUST SCALES AS NECESSARY.

NOTE: THE SCALE OF THESE DRAWINGS MAY HAVE CHANGED DUE TO REPRODUCTION.

2035 Vista Parkway
 West Palm Beach, FL 33411
 Phone No. 561.687.2220
 Fax No. 561.687.1110
 Cert No. 6091 - LB No. 7055

NO.	REVISION	DATE	BY

DEPARTMENT OF PUBLIC WORKS
 ENGINEERING DIVISION

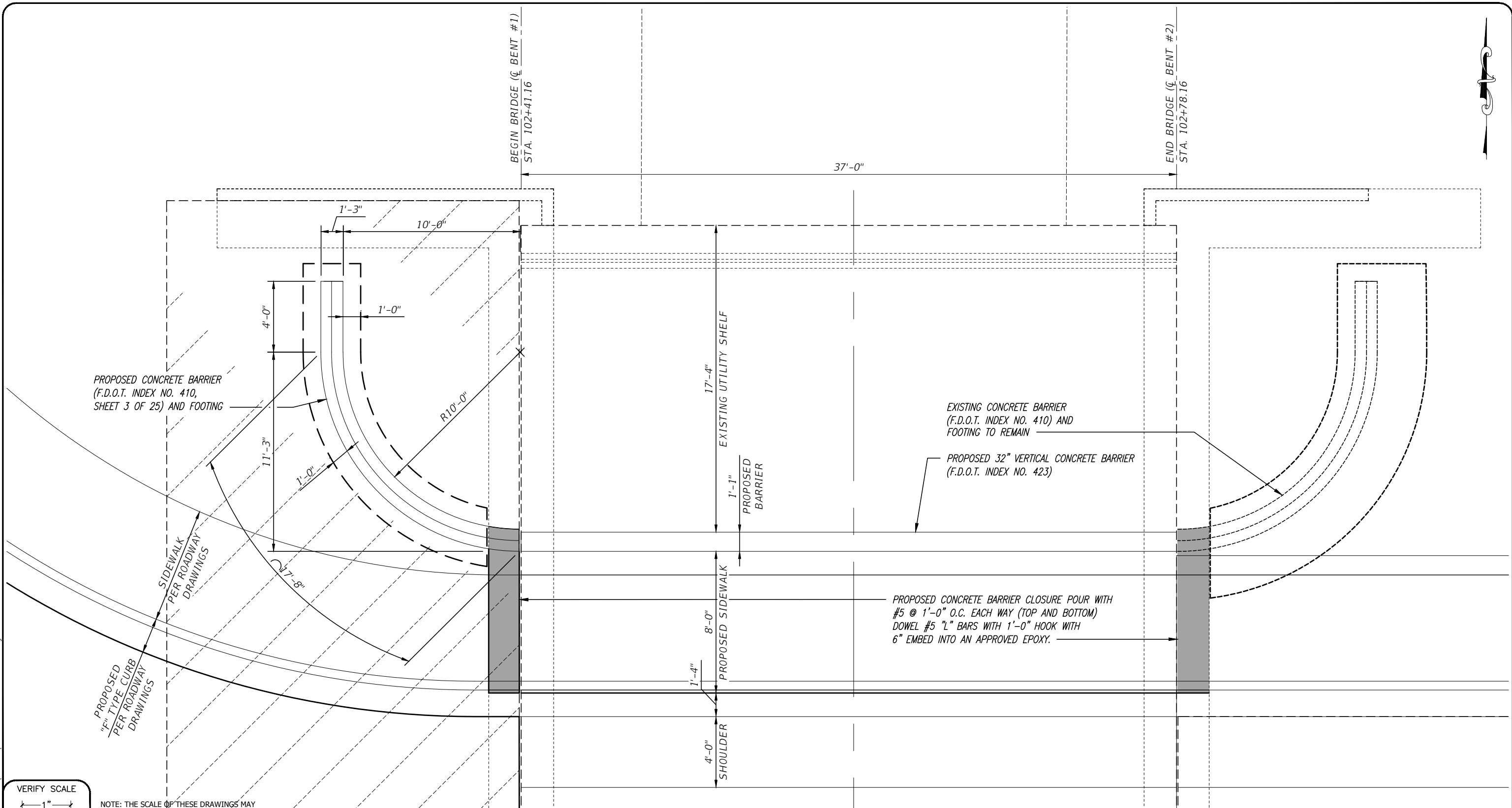
Scale: AS NOTED
 Approved:
 Drawn: C.A.B.
 Checked: T.A.D.
 Date: DECEMBER 2020
 Field Book No:

PROJECT:
 PROPOSED BRIDGE MODIFICATIONS FOR:
 66th AVENUE - PHASE 1A
 IRC 1505
 INDIAN RIVER COUNTY, FLORIDA

SEAL
 Timothy Alan DeLand-71588
 FLORIDA P.E. NAME & NUMBER

SHEET
 B-5
 PROJECT NO.
 16162296.00

DATE: Dec 17, 2020 - 10:04am C:\pwworking\wgl\craig.burkhardt\0099621\EXISTING AND PROPOSED SECTIONS.dwg



BEGIN BRIDGE (C BENT #1)
STA. 102+41.16

37'-0"

END BRIDGE (C BENT #2)
STA. 102+78.16

PROPOSED CONCRETE BARRIER
(F.D.O.T. INDEX NO. 410,
SHEET 3 OF 25) AND FOOTING

EXISTING CONCRETE BARRIER
(F.D.O.T. INDEX NO. 410) AND
FOOTING TO REMAIN

PROPOSED 32" VERTICAL CONCRETE BARRIER
(F.D.O.T. INDEX NO. 423)

PROPOSED CONCRETE BARRIER CLOSURE POUR WITH
#5 @ 1'-0" O.C. EACH WAY (TOP AND BOTTOM)
DOWEL #5 "L" BARS WITH 1'-0" HOOK WITH
6" EMBED INTO AN APPROVED EPOXY.

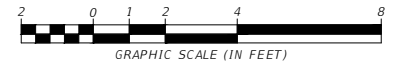
SIDEWALK
PER ROADWAY
DRAWINGS

"F" TYPE CURB
PER ROADWAY
DRAWINGS

VERIFY SCALE

NOTE: THE SCALE OF THESE DRAWINGS MAY
HAVE CHANGED DUE TO REPRODUCTION.

A PARTIAL PLAN AT PROPOSED SIDEWALK



2035 Vista Parkway
West Palm Beach, FL 33411
Phone No. 561.687.2220
Fax No. 561.687.1110
Cert No. 6091 - LB No. 7055

NO.	REVISION	DATE	BY

DEPARTMENT OF PUBLIC WORKS
ENGINEERING DIVISION

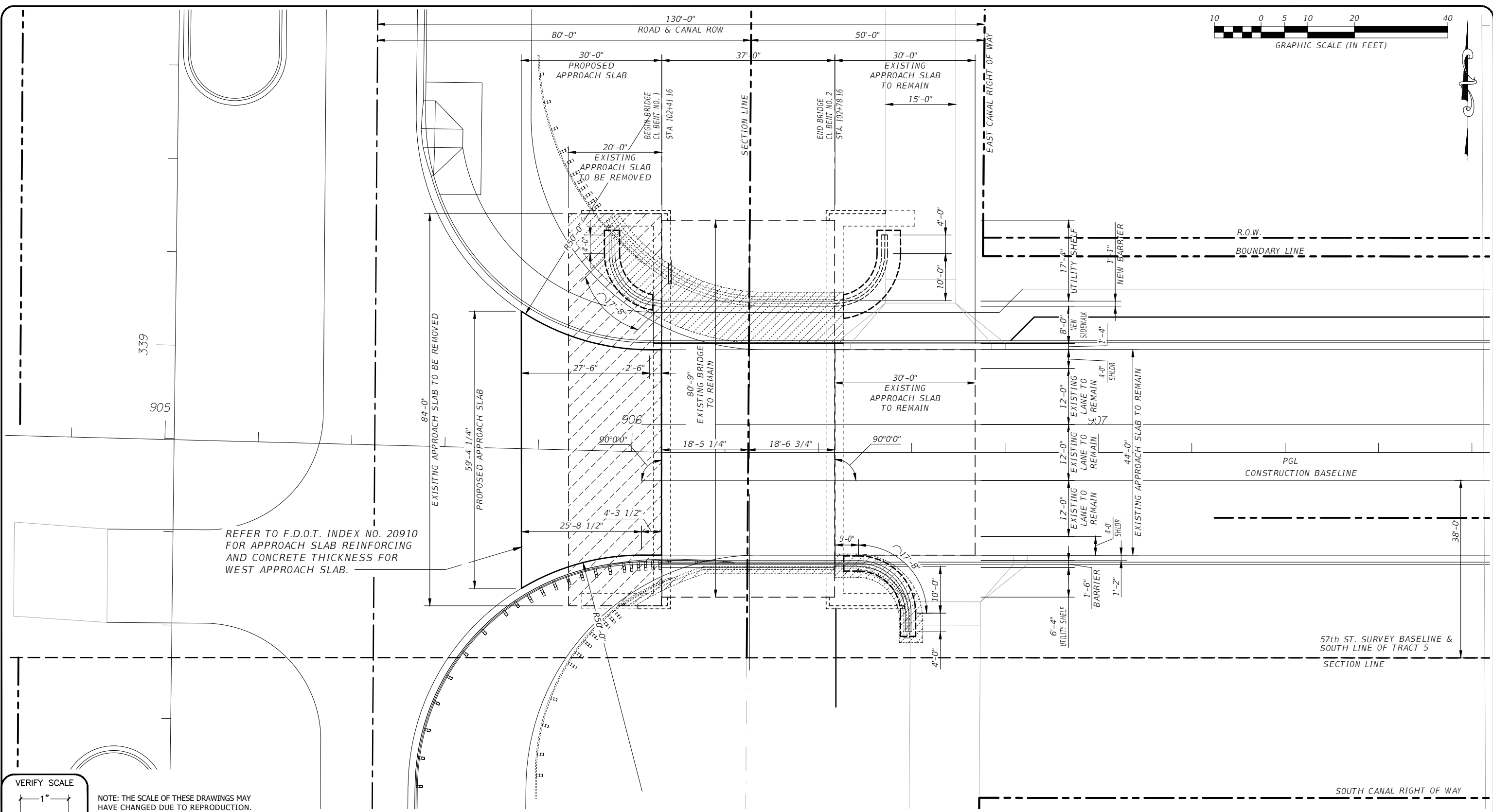
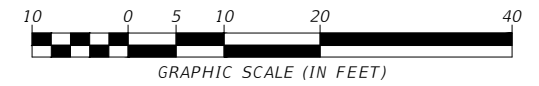
Scale: AS NOTED
Approved:
Drawn: C.A.B.
Checked: T.A.D.
Date: DECEMBER 2020
Field Book No:

PROJECT:
PROPOSED BRIDGE MODIFICATIONS FOR:
66th AVENUE - PHASE 1A
IRC 1505
INDIAN RIVER COUNTY, FLORIDA

SEAL
Timothy Alan DeLand-71588
FLORIDA P.E. NAME & NUMBER

SHEET
B-7
PROJECT NO.
16162296.00

DATE: Dec 17, 2020 - 10:04am C:\pwworking\wgl\craig.burkhardt\60399621\ENLARGED_SLAB_PLAN_AT_SIDEWALK.dwg



REFER TO F.D.O.T. INDEX NO. 20910 FOR APPROACH SLAB REINFORCING AND CONCRETE THICKNESS FOR WEST APPROACH SLAB.

VERIFY SCALE

NOTE: THE SCALE OF THESE DRAWINGS MAY HAVE CHANGED DUE TO REPRODUCTION.

BAR IS ONE INCH ON ORIGINAL DRAWINGS. ADJUST SCALES AS NECESSARY.

A APPROACH SLAB PLANS

2035 Vista Parkway
West Palm Beach, FL 33411
Phone No. 561.687.2220
Fax No. 561.687.1110
Cert No. 6091 - LB No. 7055

NO.	REVISION	DATE	BY

DEPARTMENT OF PUBLIC WORKS
ENGINEERING DIVISION

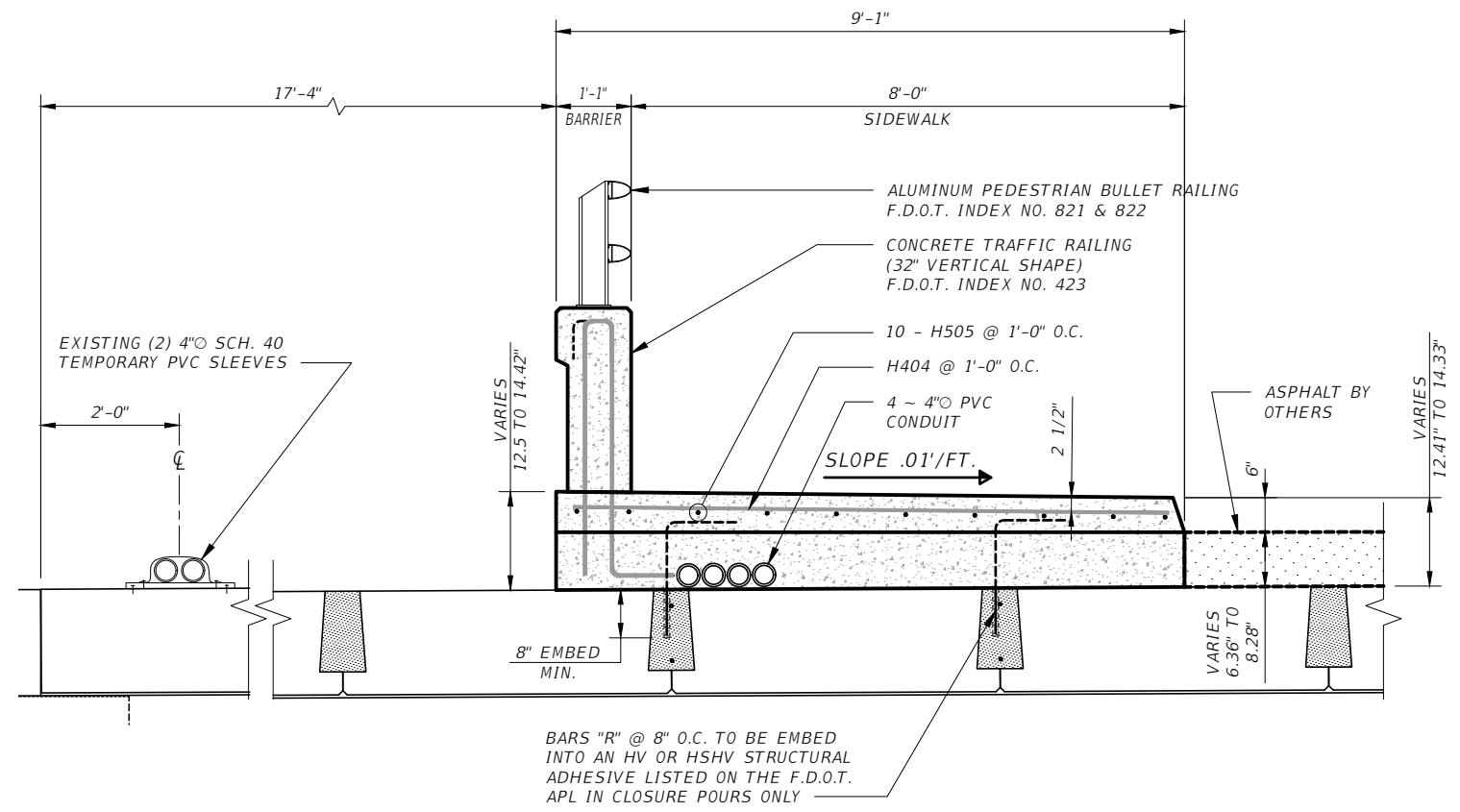
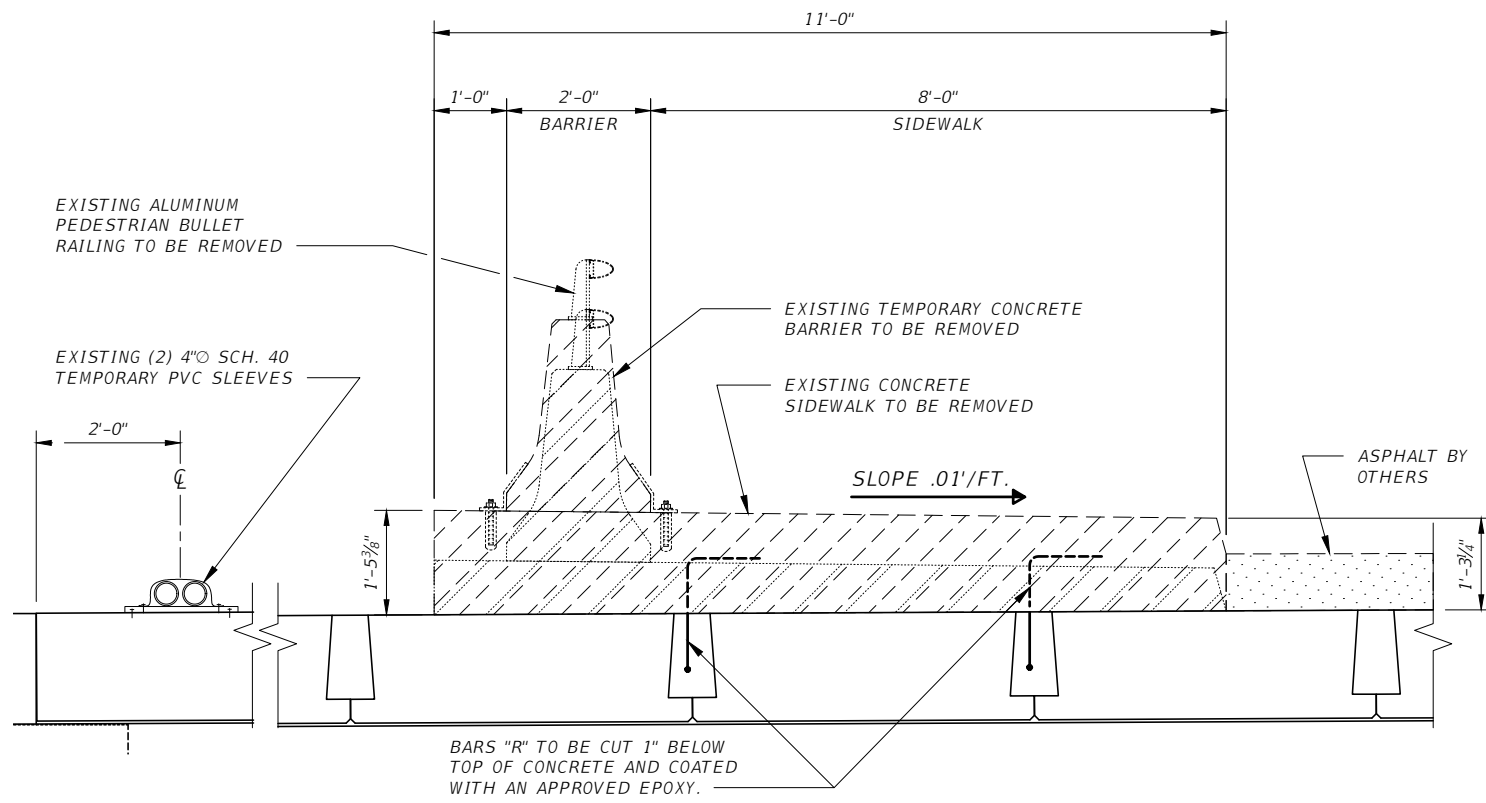
Scale: AS NOTED
Approved:
Drawn: C.A.B.
Checked: T.A.D.
Date: DECEMBER 2020
Field Book No:

PROJECT:
PROPOSED BRIDGE MODIFICATIONS FOR:
66th AVENUE - PHASE 1A
IRC 1505
INDIAN RIVER COUNTY, FLORIDA

SEAL
Timothy Alan DeLand-71588
FLORIDA P.E. NAME & NUMBER

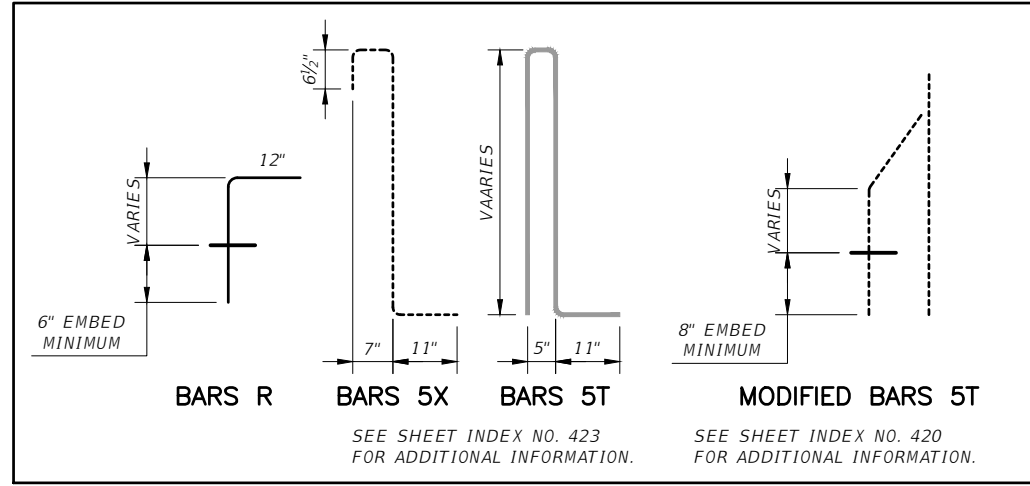
SHEET
B-8
PROJECT NO.
16162296.00

DATE: Dec 17, 2020 - 10:05am C:\pwworking\wgl\craig.burkhardt\16162296\APPROACH SLAB PLANS.dwg



1 SECTION AT EXISTING SIDEWALK/TEMPORARY BARRIER (NEAR END BENT #2)

2 SECTION AT PROPOSED SIDEWALK/TEMPORARY BARRIER (NEAR END BENT #2)



Estimated Misc. Quantities			
Item	Required	Unit	Quantity
Class II Concrete (Sidewalks)		Cu. Yds.	6.0
Reinforcing Steel (Sidewalks)		lbs.	2553

Misc. Bill of Reinforcing Steel					
Mark	Size	Number Required	Total Length	Bending	Weight (lbs.)
SIDEWALKS (TOTAL)					
H404	4	92	40'-2"	Straight	2468
H505	5	10	8'-1"	Straight	84

VERIFY SCALE

 BAR IS ONE INCH ON ORIGINAL DRAWINGS. ADJUST SCALES AS NECESSARY.

NOTE: THE SCALE OF THESE DRAWINGS MAY HAVE CHANGED DUE TO REPRODUCTION.

2035 Vista Parkway
 West Palm Beach, FL 33411
 Phone No. 561.687.2220
 Fax No. 561.687.1110
 Cert No. 6091 - LB No. 7055

NO.	REVISION	DATE	BY

DEPARTMENT OF PUBLIC WORKS
 ENGINEERING DIVISION

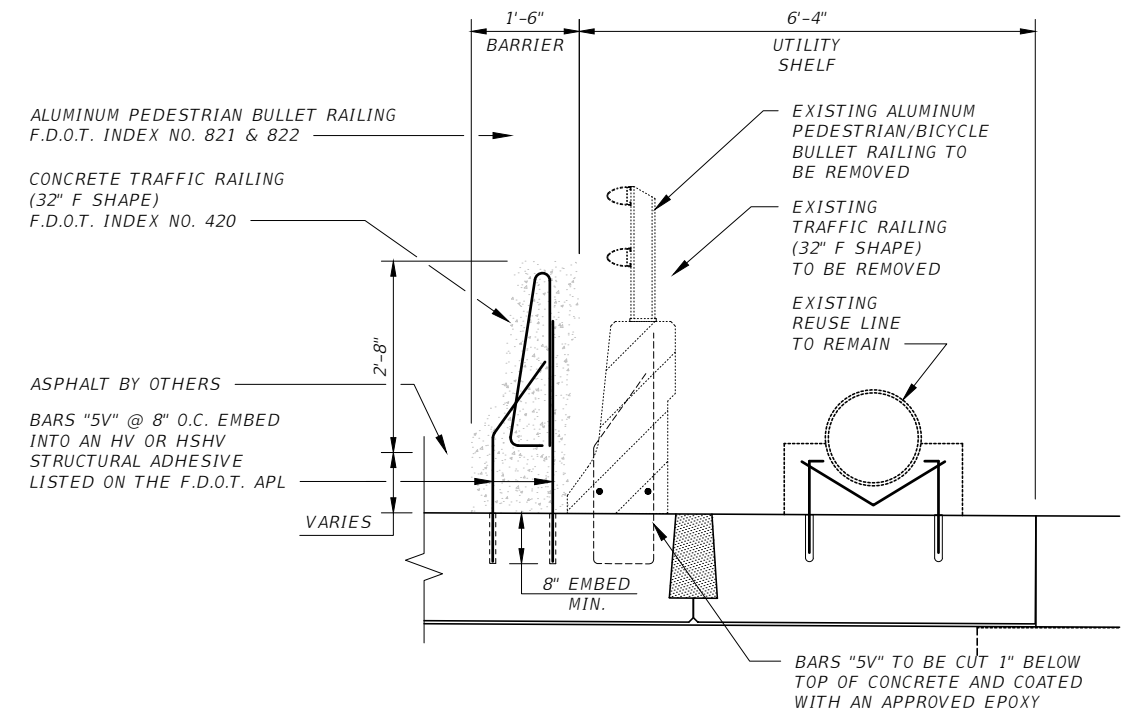
Scale: AS NOTED
 Approved:
 Drawn: C.A.B.
 Checked: T.A.D.
 Date: DECEMBER 2020
 Field Book No:

PROJECT:
 PROPOSED BRIDGE MODIFICATIONS FOR:
 66th AVENUE - PHASE 1A
 IRC 1505
 INDIAN RIVER COUNTY, FLORIDA

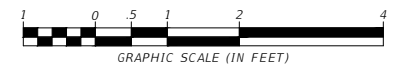
SEAL
 Timothy Alan DeLand-71588
 FLORIDA P.E. NAME & NUMBER

SHEET
 B-9
 PROJECT NO.
 16162296.00

DATE: Dec 17, 2020 - 10:05am C:\pwworking\wgl\craig.barkhardt\1616229621\MISCELLANEOUS DETAILS.dwg



1 SECTION AT BARRIER (NEAR END BENT #2)
B-10



DATE: Dec 17, 2020 - 10:05am C:\pwworking\wgl\craig.barkhara\160399621\MISCELLANEOUS DETAILS.dwg

VERIFY SCALE

NOTE: THE SCALE OF THESE DRAWINGS MAY HAVE CHANGED DUE TO REPRODUCTION.

BAR IS ONE INCH ON ORIGINAL DRAWINGS. ADJUST SCALES AS NECESSARY.

2035 Vista Parkway
West Palm Beach, FL 33411
Phone No. 561.687.2220
Fax No. 561.687.1110
Cert No. 6091 - LB No. 7055

NO.	REVISION	DATE	BY

DEPARTMENT OF PUBLIC WORKS
ENGINEERING DIVISION

Scale: AS NOTED
Approved:
Drawn: C.A.B.
Checked: T.A.D.
Date: DECEMBER 2020
Field Book No:

PROJECT:
PROPOSED BRIDGE MODIFICATIONS FOR:
66th AVENUE - PHASE 1A
IRC 1505
INDIAN RIVER COUNTY, FLORIDA

SEAL
Timothy Alan DeLand-71588
FLORIDA P.E. NAME & NUMBER

SHEET
B-10
PROJECT NO.
16162296.00

Load Rating Summary Details for Prestressed Concrete Bridges (Flat Slab and Deck/Girder)

Table Date 07-19-13

Table 2 - LRFR using Part A³

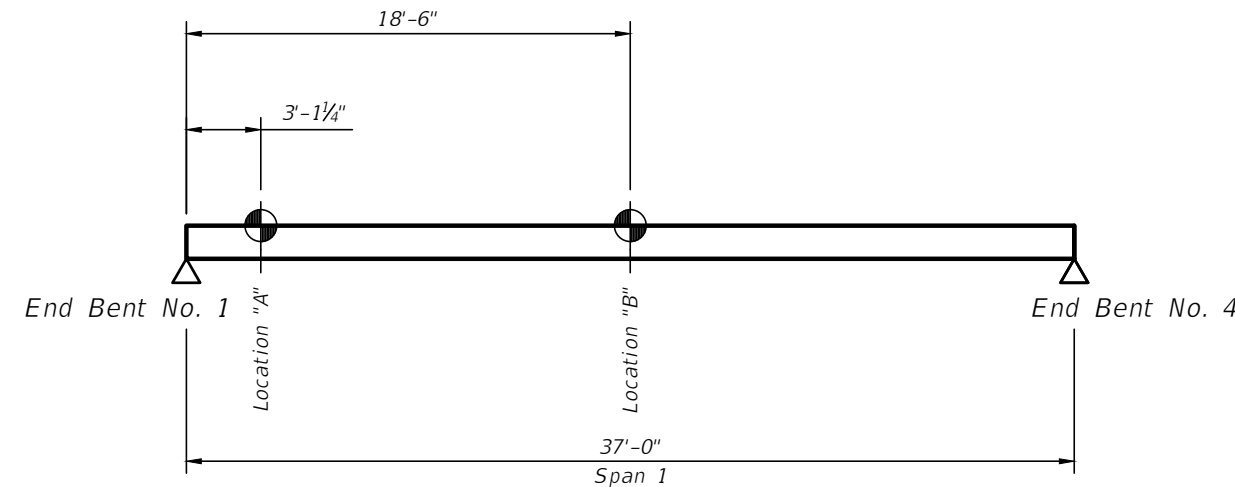
Level	Limit State	Vehicle	Weight (tons)	Load Factors			Moment (Strength) or Stress (Service)				Shear (Strength)				Comments:		
				LL	DC	DW	Distribution Factor (DF)	Rating Factor	Tons	Location	Dimension	Distribution Factor (DF)	Rating Factor	Tons		Location	Dimension
Design Load Rating	Strength I (Inv)	HL-93	-	1.75	1.25	1.50	0.46	1.24	-	0.5L	17.75	0.60	4.14	-	Transfer	2.25	Interior/exterior beam DF Method if other than LRFD. Other appropriate comments
	Strength I (Op)	HL-93	-	1.35	1.25	1.50	0.46	1.60	-	0.5L	17.75	0.60	5.49	-	Transfer	2.25	
	Service III (Inv)	HL-93	-	0.80	1.00	1.00	0.46	1.09	-	0.5L	17.75	-	-	-	-	-	
	Service III (Op)	HL-93	-	0.80	1.00	1.00	0.46	1.45	-	0.5L	17.75	-	-	-	-	-	
Legal Load Rating	Strength I	SU4 Truck	40.00	1.35	1.25	1.50	0.46	2.14	85.49	0.5L	17.75	0.60	7.30	291.89	Transfer	2.25	
	Strength I	C5 Truck	40.00	1.35	1.25	1.50	0.46	2.24	89.78	0.5L	17.75	0.60	7.78	311.02	Transfer	2.25	
	Strength I	ST5 Truck	35.00	1.35	1.25	1.50	0.46	1.67	58.44	0.5L	17.75	0.60	5.95	208.09	Transfer	2.25	
	Service III	SU4 Truck	40.00	0.80	1.00	1.00	0.46	1.94	77.52	0.5L	17.75	-	-	-	-	-	
	Service III	C5 Truck	40.00	0.80	1.00	1.00	0.46	2.04	81.41	0.5L	17.75	-	-	-	-	-	
	Service III	ST5 Truck	35.00	0.80	1.00	1.00	0.46	1.51	52.99	0.5L	17.75	-	-	-	-	-	
Permit Load Rating	Strength II	FL120	60.00	1.35	1.25	1.50	0.46	1.26	75.46	0.5L	17.75	0.60	3.68	220.82	Transfer	2.25	
	Service III	FL120	60.00	1.00	1.00	1.00	0.46	1.44	86.31	0.5L	17.75	-	-	-	-	-	

Abbreviations:
Inv - Inventory
Op - Operating

General Notes:
1. This table is based on the requirements established in the January 2011 "Structures Manual".

Table 2 Notes:
1. Permit capacity is determined by using the permit vehicle in all lanes.
2. If the Design Operating Load Rating is greater than 1.4, Load Rating using Legal Vehicles SU4, C5, and ST5 is not required.
3. Service III Design Inventory tensile stress limits = $6\sqrt{f'c}$, Service III Design Operating, Legal, and Permit tensile stress limits = $7.5\sqrt{f'c}$.
4. Has the AASHTO LRFD Specifications Article 5.8.3.5 longitudinal reinforcement been satisfied? Yes No

Controlling Load Rating			
Limit State	Vehicle	Weight (Tons)	Rating Factor
Service III (Inv)	HL-93	-	1.09



RATING LOCATIONS

VERIFY SCALE
1" = 1"
NOTE: THE SCALE OF THESE DRAWINGS MAY HAVE CHANGED DUE TO REPRODUCTION.
Sunshine811

WGL
2035 Vista Parkway
West Palm Beach, FL 33411
Phone No. 561.687.2220
Fax No. 561.687.1110
Cert No. 6091 - LB No. 7055

NO.	REVISION	DATE	BY

INDIAN RIVER COUNTY FLORIDA
DEPARTMENT OF PUBLIC WORKS
ENGINEERING DIVISION

Scale: AS NOTED
Approved:
Drawn: C.A.B.
Checked: T.A.D.
Date: DECEMBER 2020
Field Book No:

PROJECT:
PROPOSED BRIDGE MODIFICATIONS FOR:
66th AVENUE - PHASE 1A
IRC 1505
INDIAN RIVER COUNTY, FLORIDA

SEAL
Timothy Alan DeLand-71588
FLORIDA P.E. NAME & NUMBER

SHEET
B-11
PROJECT NO.
16162296.00

DATE: Dec 17, 2020 - 10:05am C:\working\wg\craig.burkhart\16162296\LOAD RATING CHART.dwg