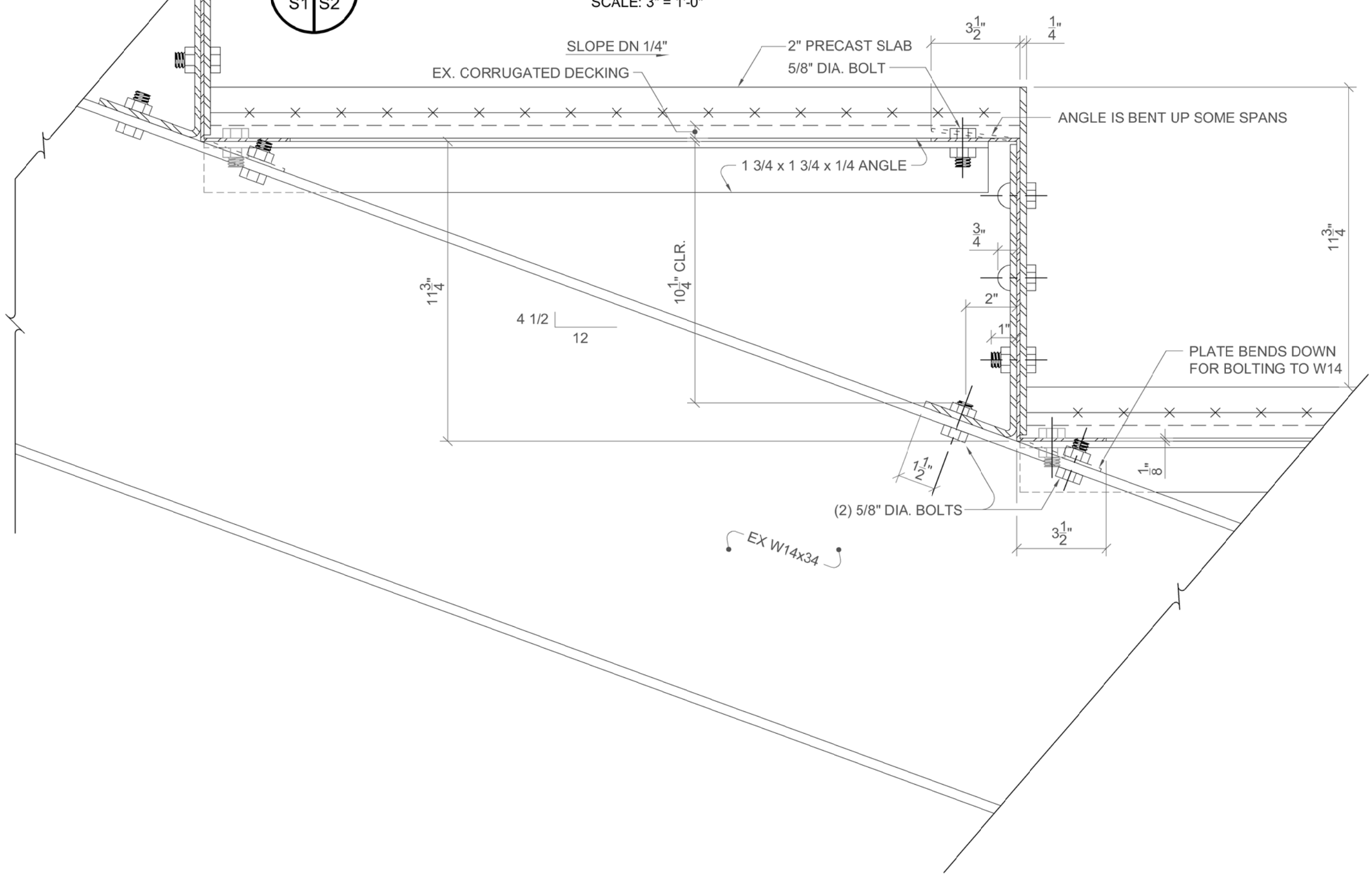


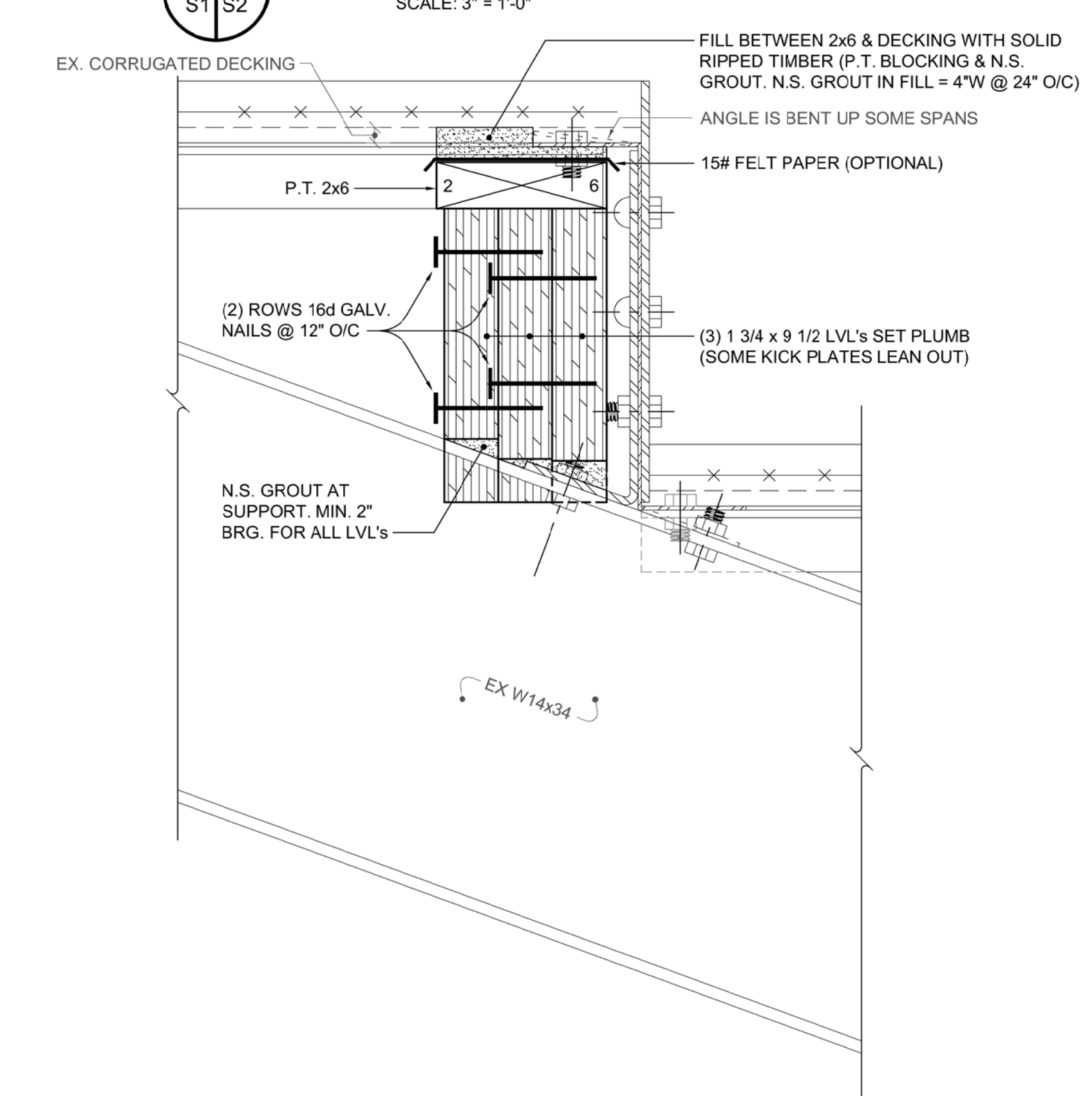
REVISIONS	
NO.	DESCRIPTION

Applan
CONSULTING ENGINEERS, P.A.
CIVIL, MUNICIPAL &
STRUCTURAL ENGINEERS
COMPREHENSIVE
ENVIRONMENTAL SERVICES
154 Roundabout Ct.
Rocky Mount, N.C. 27804
Phone: (252) 972-7703
Fax: (252) 972-7638
www.applanengineers.com
admin@applanengineers.com

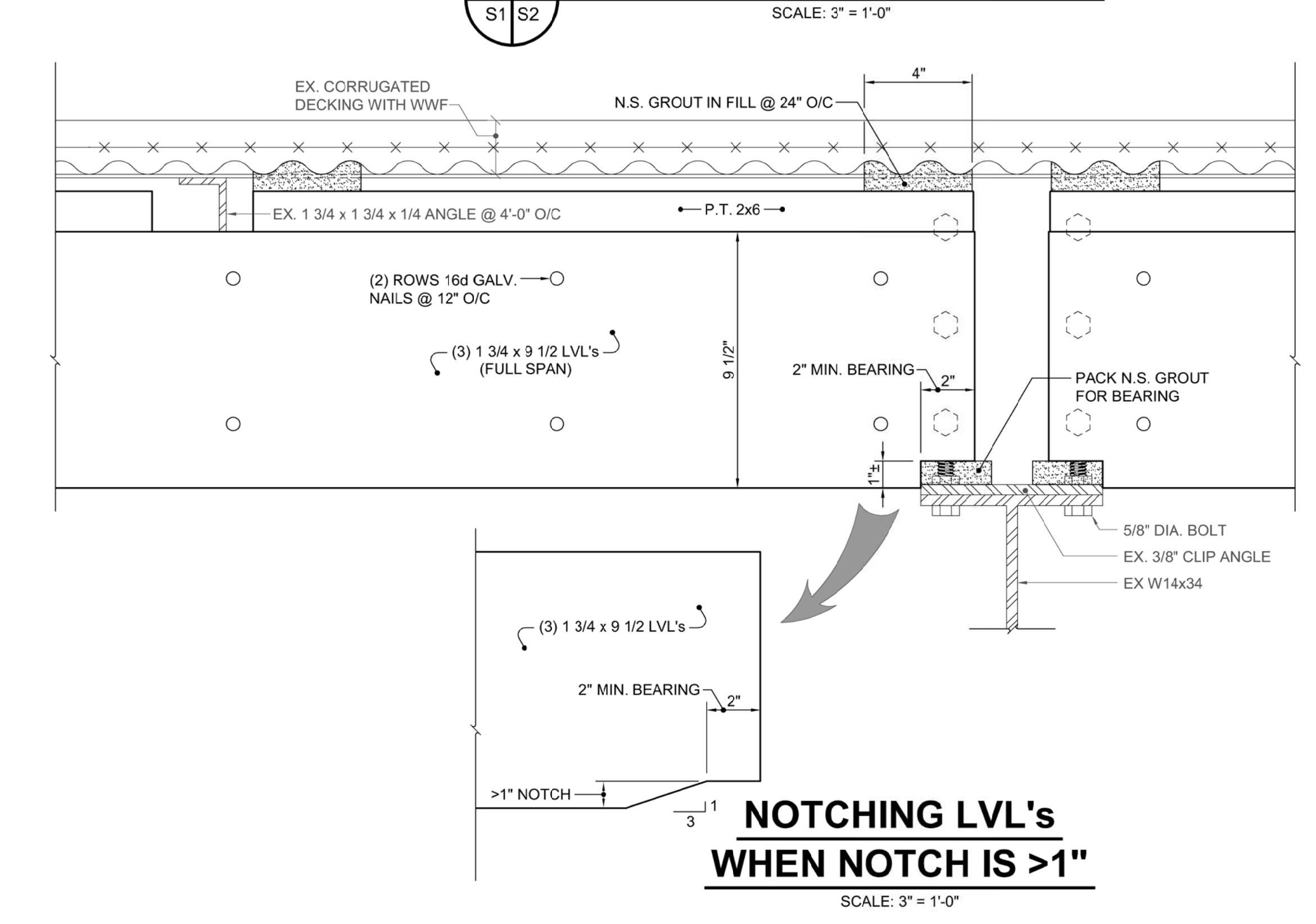
100 EX. BLEACHERS SEAT BEARING



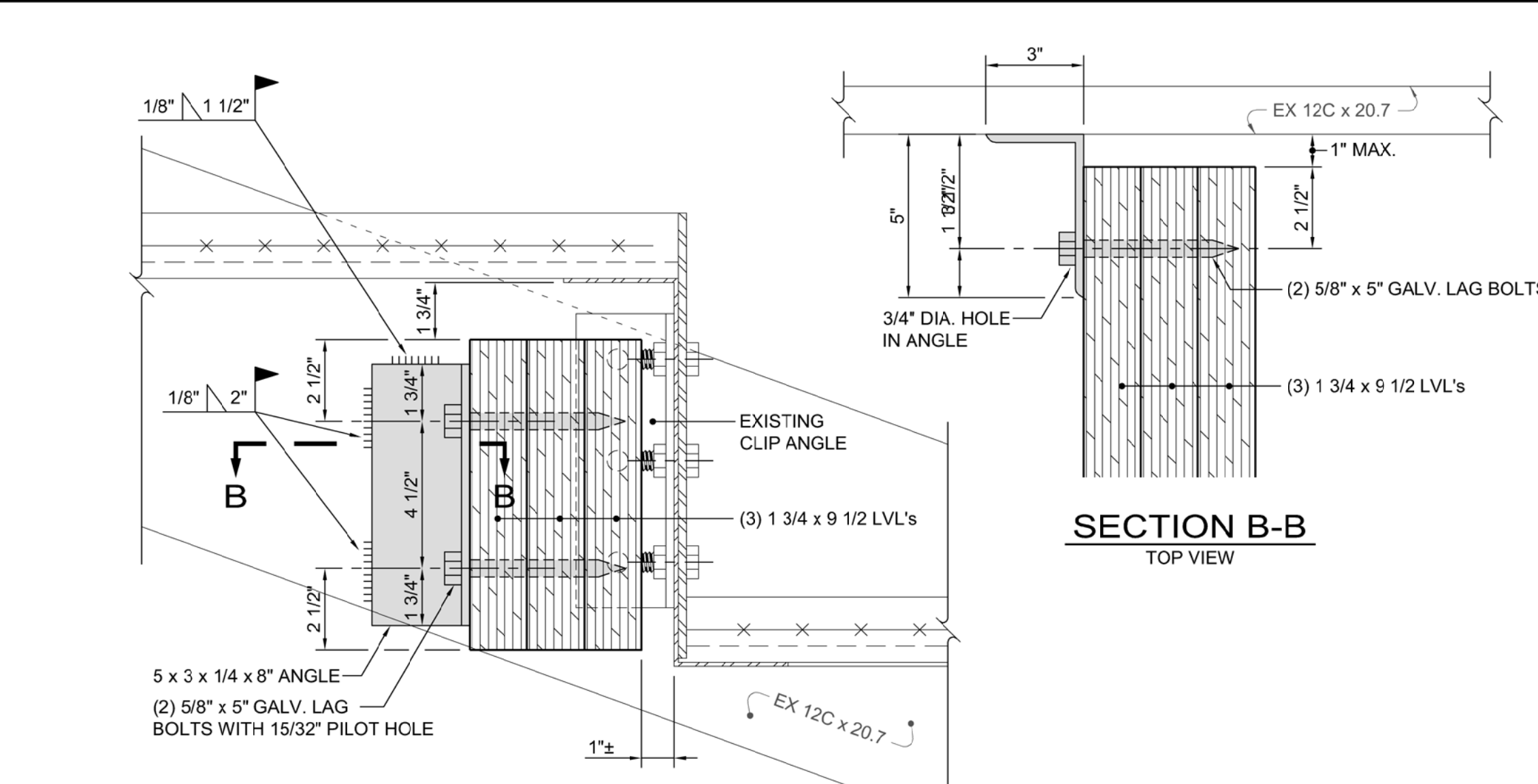
101 LVL's at BEARING



102 NOTCHING LVL's - 1" NOTCH

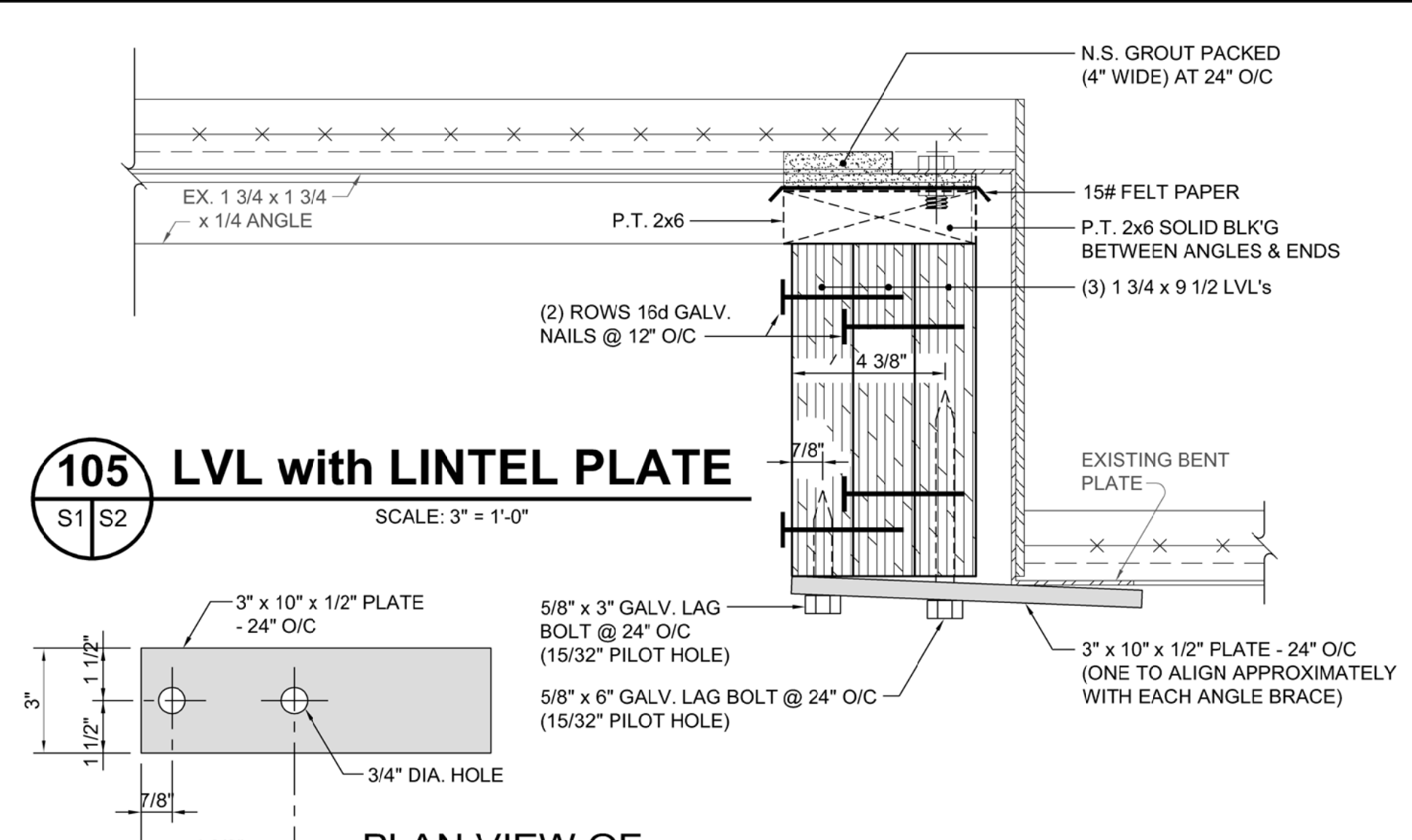


NOTCHING LVL's WHEN NOTCH IS >1"
SCALE: 3" = 1'-0"



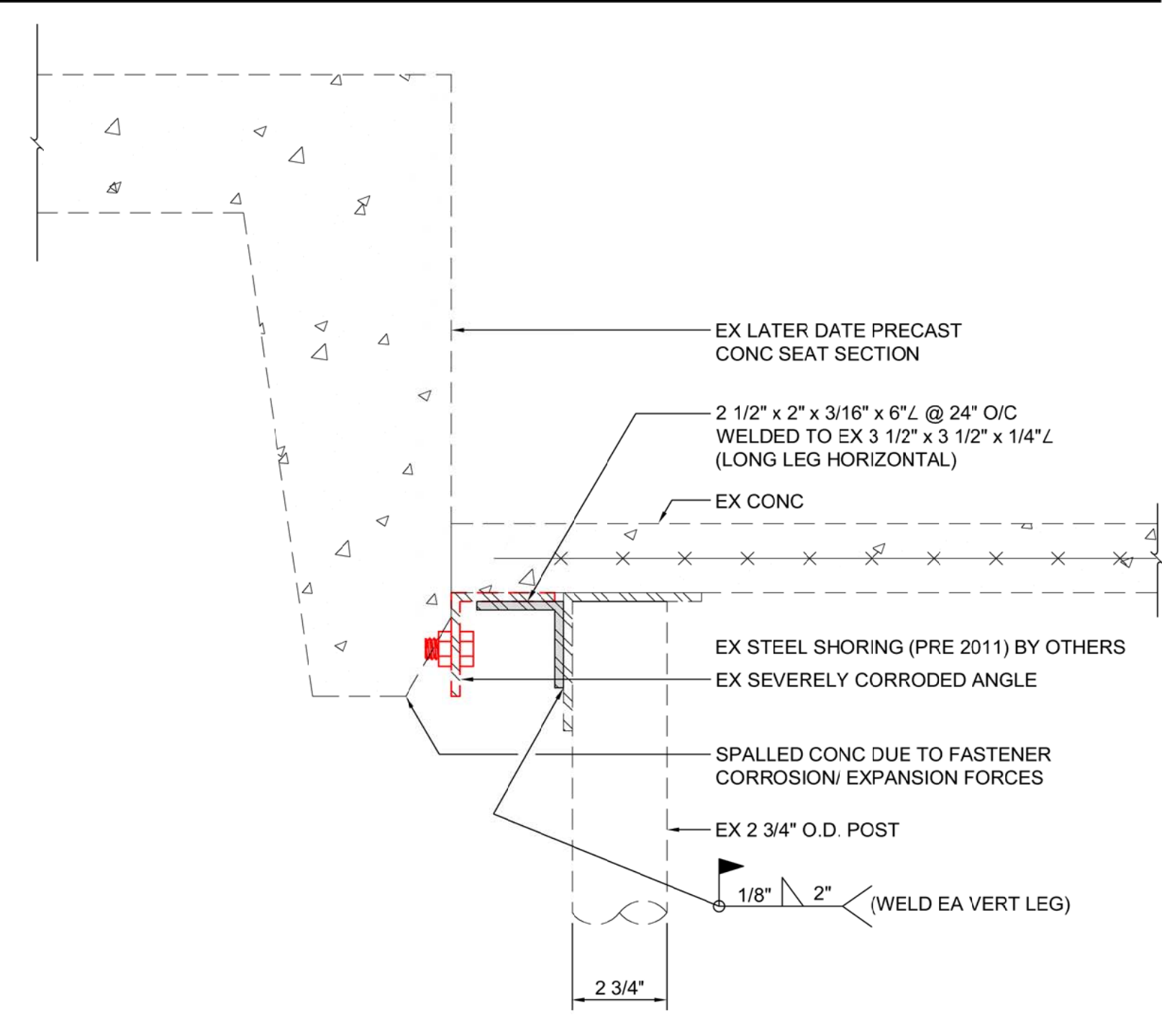
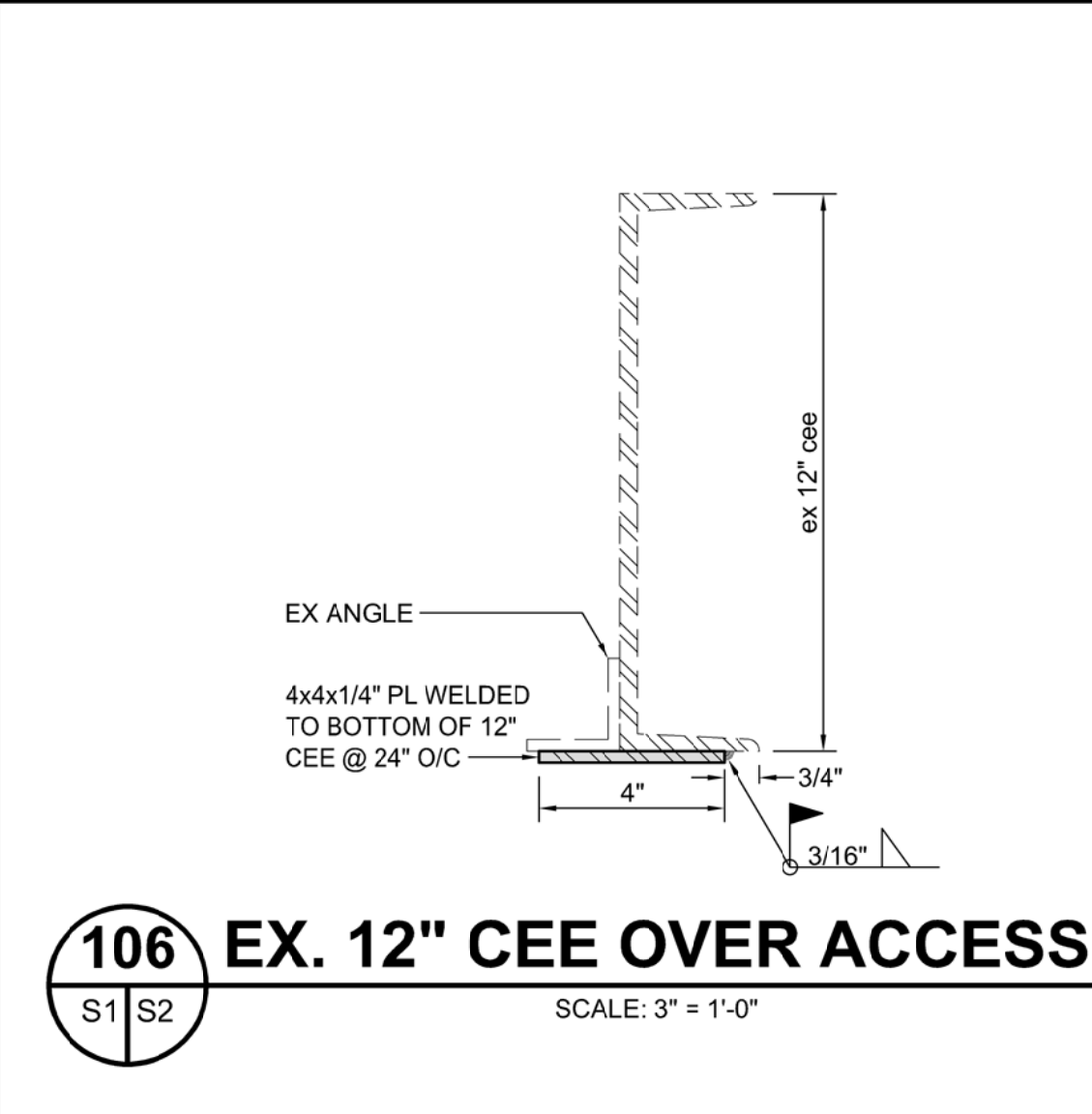
103 SHORT SPAN LVL ATTACHMENT TO C12 x 20.7

SCALE: 3" = 1'-0"



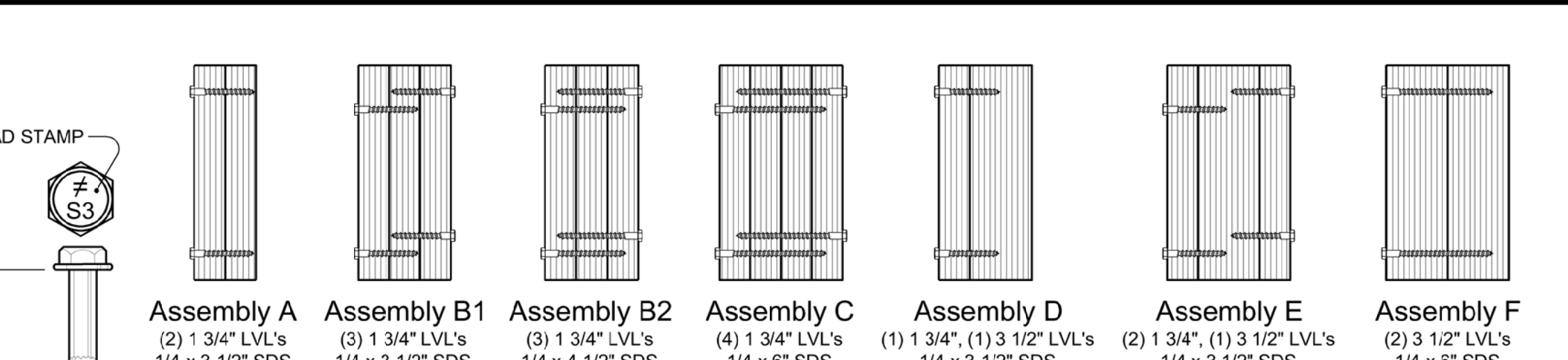
105 LVL with LINTEL PLATE

SCALE: 3" = 1'-0"



108 SHORING FAILED CLIP ANGLE

SCALE: 3" = 1'-0"



Assembly	L1	T	Head Stamp	
Assembly A	1/4 x 3 1/2 SDS	3 1/2"	2 1/4"	S3.5
Assembly B1	1/4 x 3 1/2 SDS	4 1/2"	2 3/4"	S4.5
Assembly B2	1/4 x 4 1/2 SDS	6"	3 1/4"	S6
Assembly C	(2) 1 3/4" LVL's / 1/4 x 3 1/2" SDS	3 1/2"	2 1/4"	S3.5
Assembly D	(3) 1 3/4" LVL's / 1/4 x 3 1/2" SDS	4 1/2"	2 3/4"	S4.5
Assembly E	(3) 1 3/4" LVL's / 1/4 x 6" SDS	6"	3 1/4"	S6
Assembly F	(2) 3 1/2" LVL's / 1/4 x 8" SDS	-	-	-

Assembling Multiple Plies of LVL Timber

(To achieve maximum transition of loads between plies):

- Fastener Spacing:
 - a. Beams < or = to 14 inches: Fasten multiple members with 2 rows of 1/4" SDS screws at 12" o/c.
 - b. Beams 16" and deeper: Fasten multiple members with 3 rows of 1/4" SDS screws at 12" o/c.
- Minimum Edge and End Distances for 1/4" SDS fasteners (Wide Face)
 - a. End distance: 4"
 - b. Edge distance: 1 1/2"
 - c. Spacing parallel to grain: 4"
 - d. Spacing perpendicular to grain: 2"
- Fastener Length: See schematic above (ref Simpson Strong Tie).

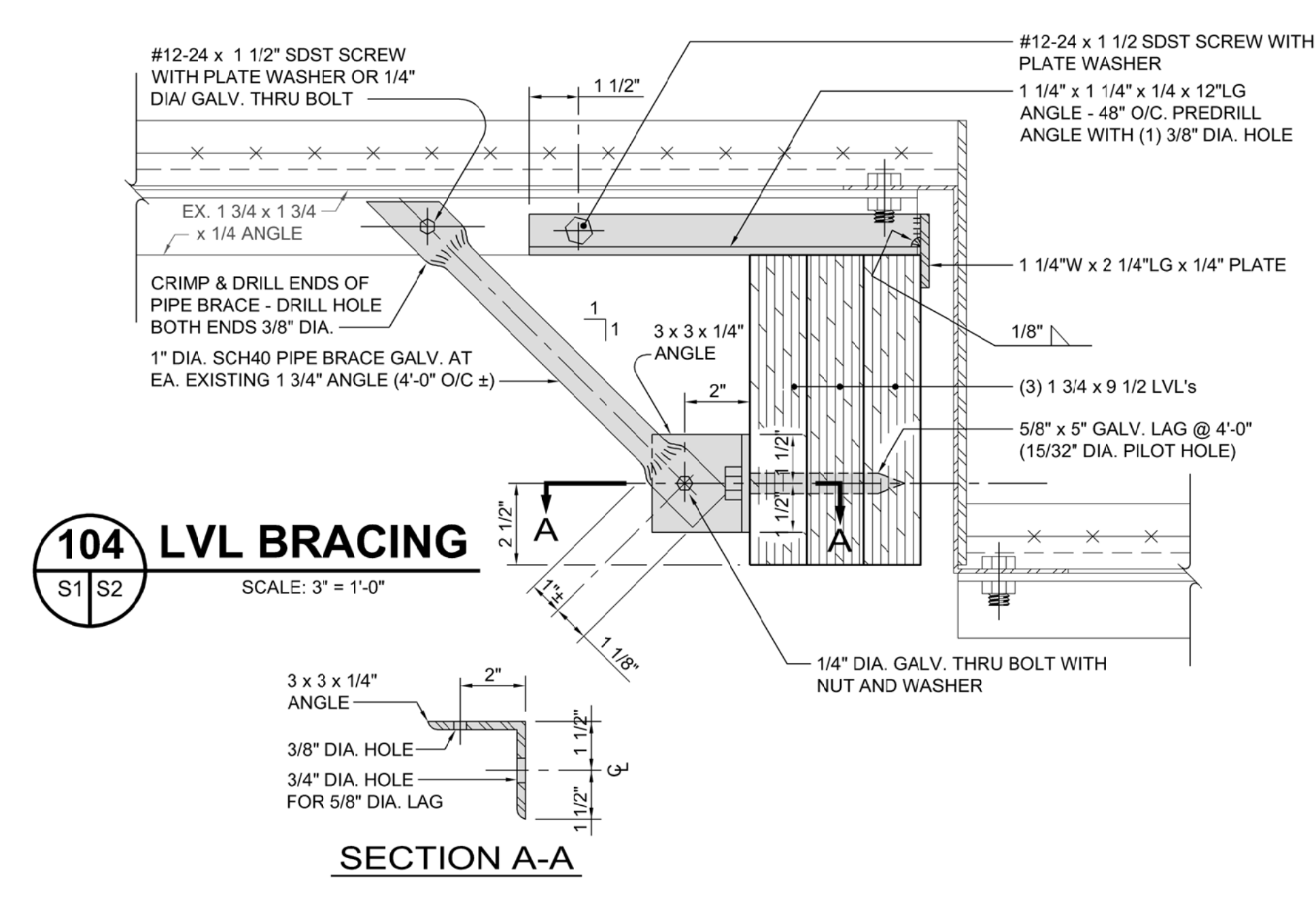
FASTENING SPACING

- 2 PLY BEAMS:
 - a. 2 ROWS OF 10D (0.148"Ø) x 3" HDG NAILS
- 3-PLY OR GREATER BEAMS:
 - a. 2 ROWS OF 16D (0.162"Ø) x 3 1/2" HDG NAILS
- IF BEAM IS PRESSURE TREATED, USE STAINLESS STEEL NAILS!
- CENTER TO CENTER LONGITUDINAL C/L SPACING = 16" O/C STAGGER SPACED

MINIMUM EDGE DISTANCE

- END EDGE DISTANCE = 4"
- EDGE DISTANCE = 1 1/2"

ASSEMBLING PLYS OF SOLID SAWN LUMBER
NOT TO SCALE DATE: 7-31-18
Details Developed by APPLAN Consulting Engineers



104 LVL BRACING

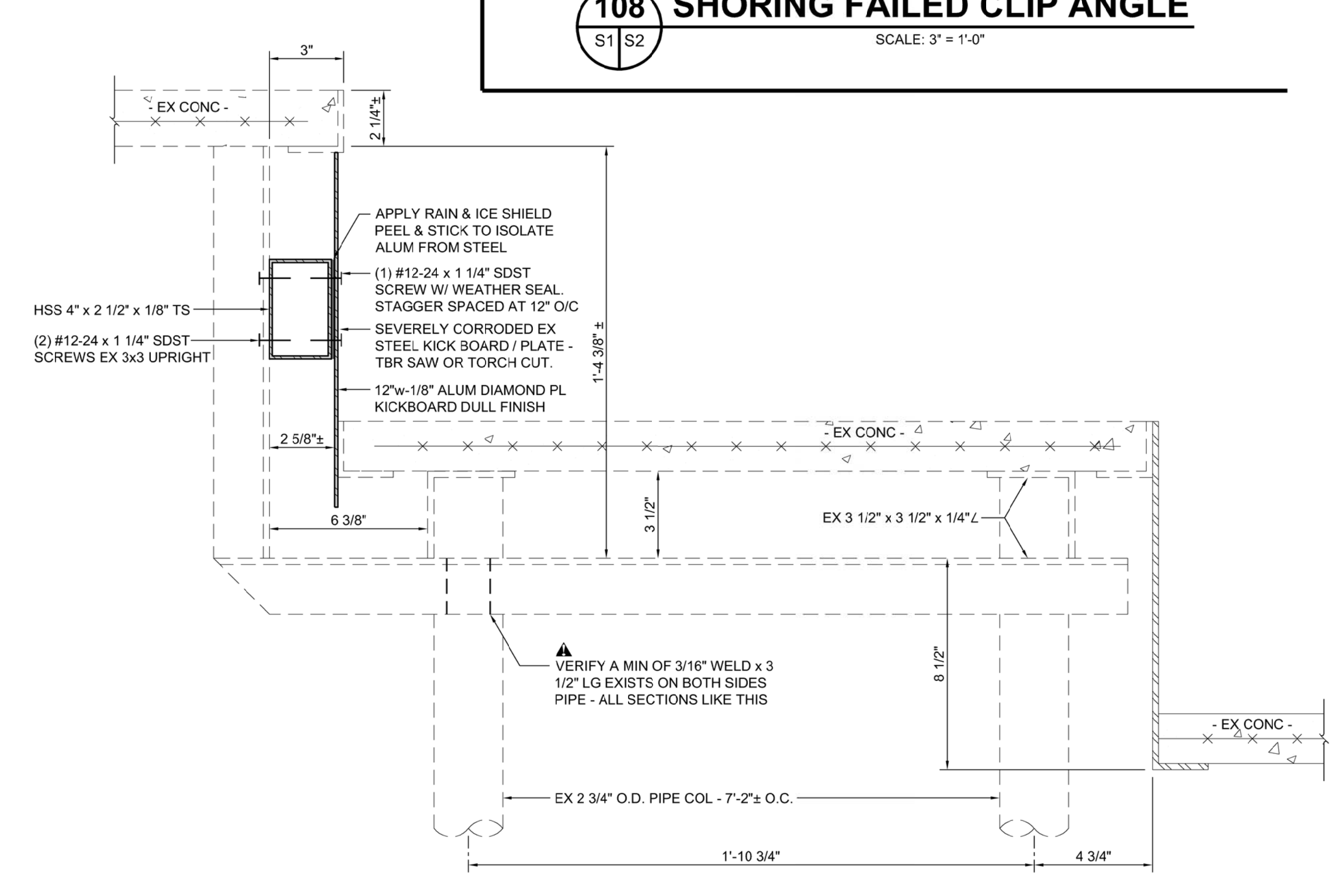
SCALE: 3" = 1'-0"

RECORD DRAWINGS:
These drawings are believed to be a correct representation of actual field conditions but are not warranted as such.
By: _____ Date: _____

CONSTRUCTION SAFETY:
These drawings do not contain the requirements for job safety. All provisions for safety shall be the sole responsibility of the contractor.

EXISTING CONDITIONS:
The contractor shall be responsible for reviewing all existing job conditions. Any adverse existing conditions affecting work shown on these drawings shall be brought to the attention of the engineer for possible clarification or reconciliation.

ADA AND LEGAL DISCLAIMER:
This document is not represented to comply with all requirements contained in the ADA or other laws. Engineers are not licensed to interpret laws or give advice concerning laws, the owner should have this document reviewed by his attorney to determine legal compliance.



107 EX RETROFIT STEEL CHASSIS

SCALE: 3" = 1'-0" (EAST END SECTION 101, ROW E)

CONSTRUCTION DETAILS
Fleming Stadium
Wilson, N.C.

98-000
D-0000
S2