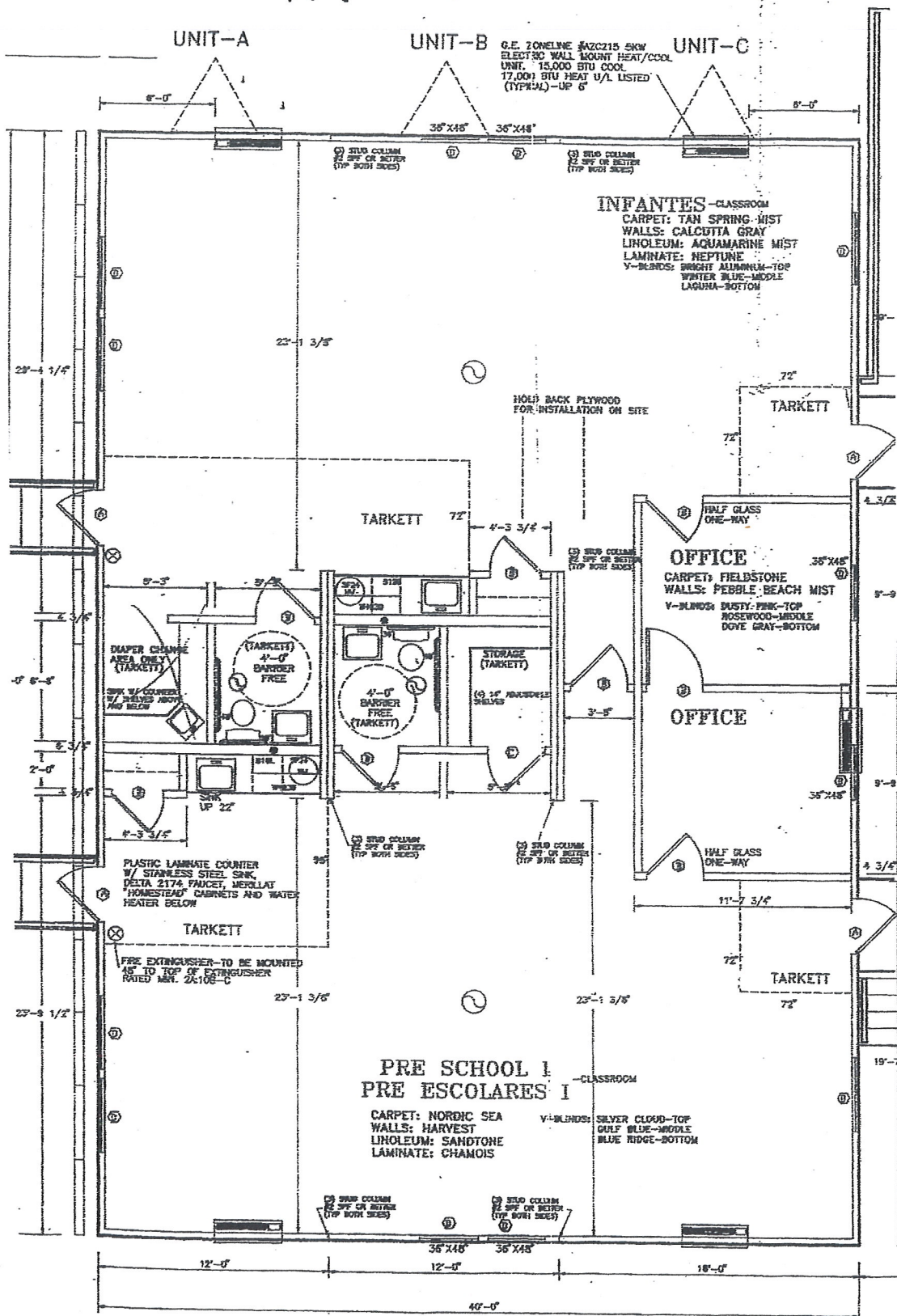


Pullman, MI 49450

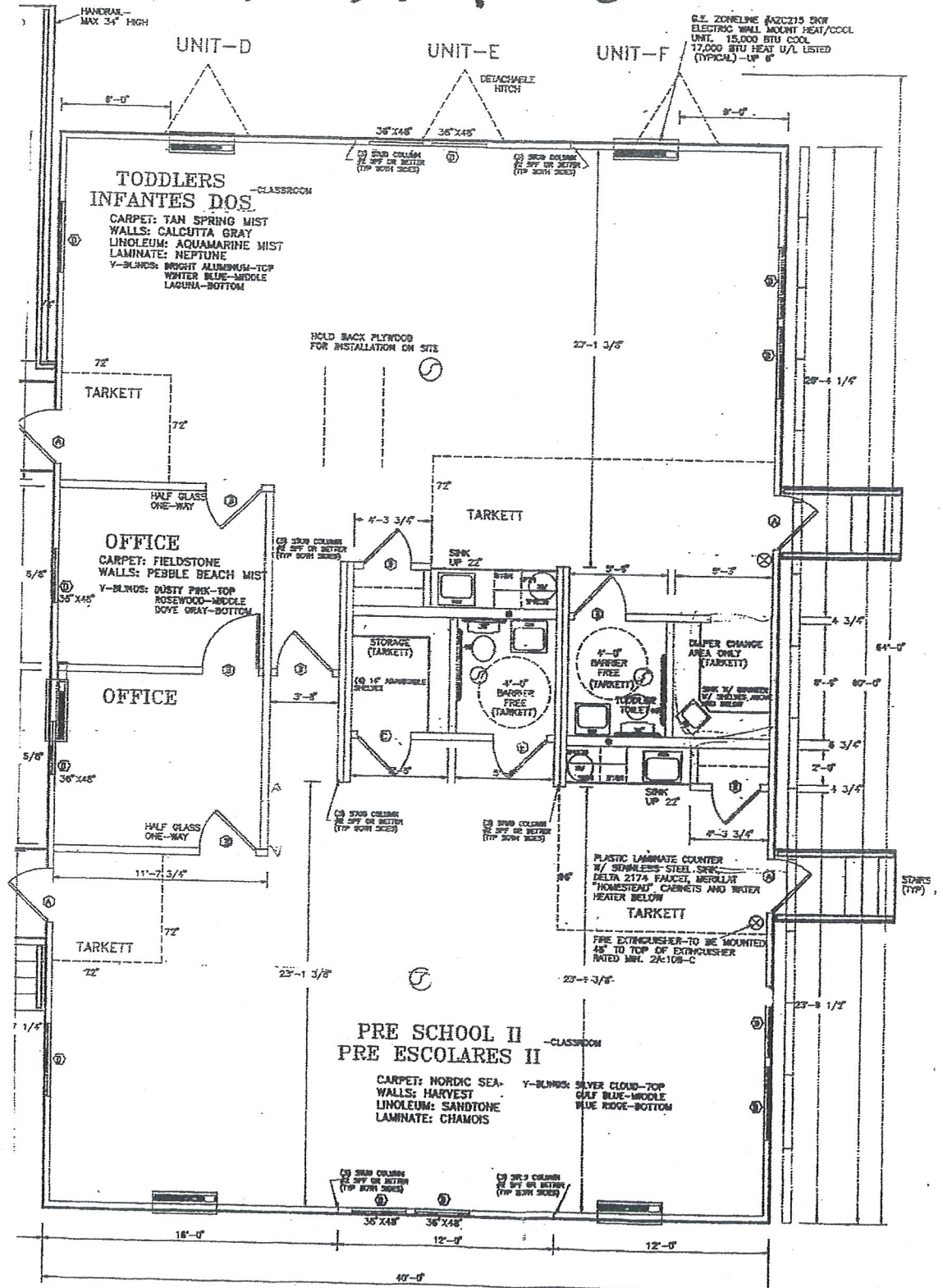
MODULATZ 1



2 of 3

Pullman, MI 49450

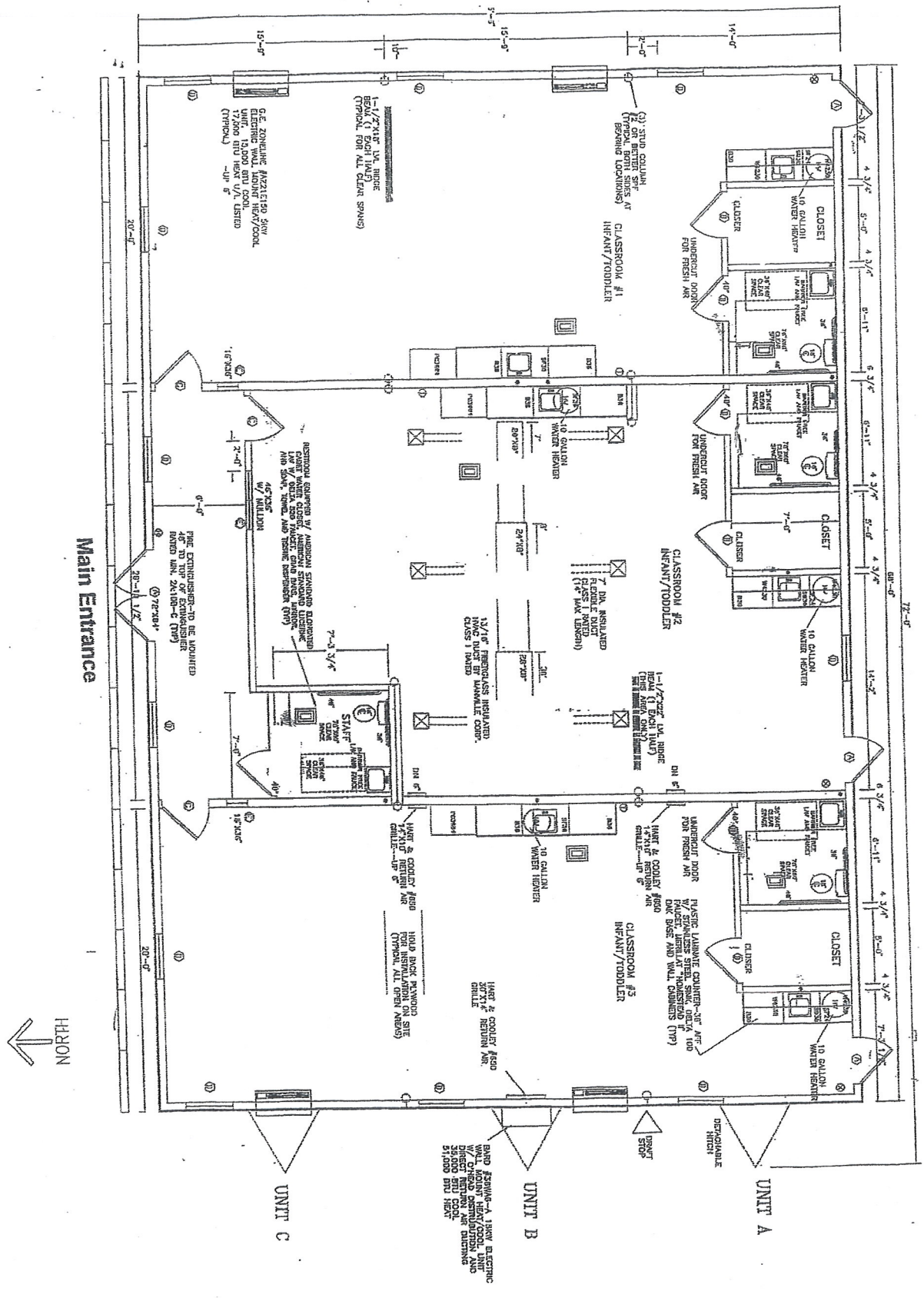
MODULAR \mathbb{Z}

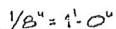


893 55th Street
Pullman, MI 49450

MODULAR 3

3 of 3

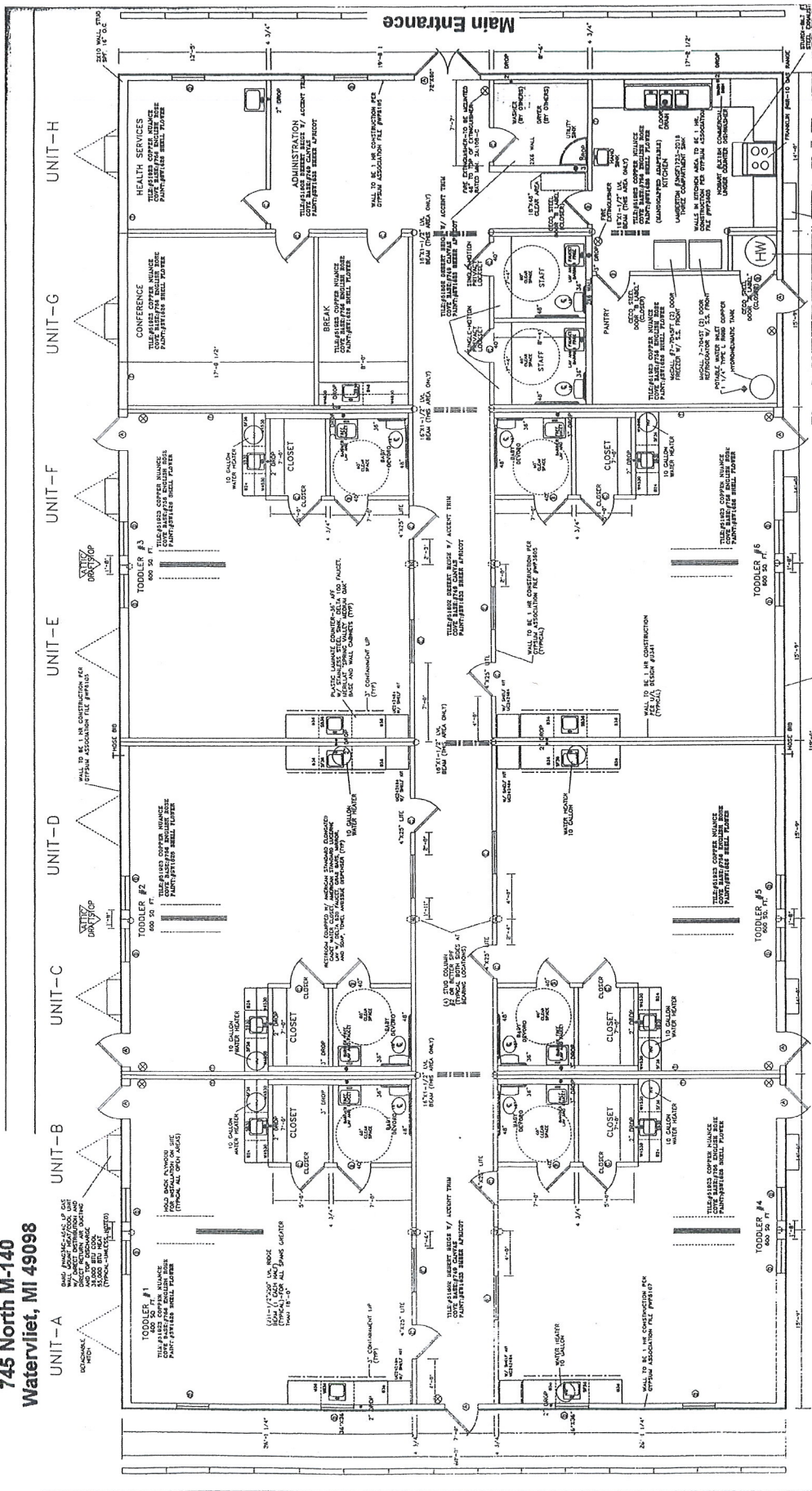




F L O O R P L A N

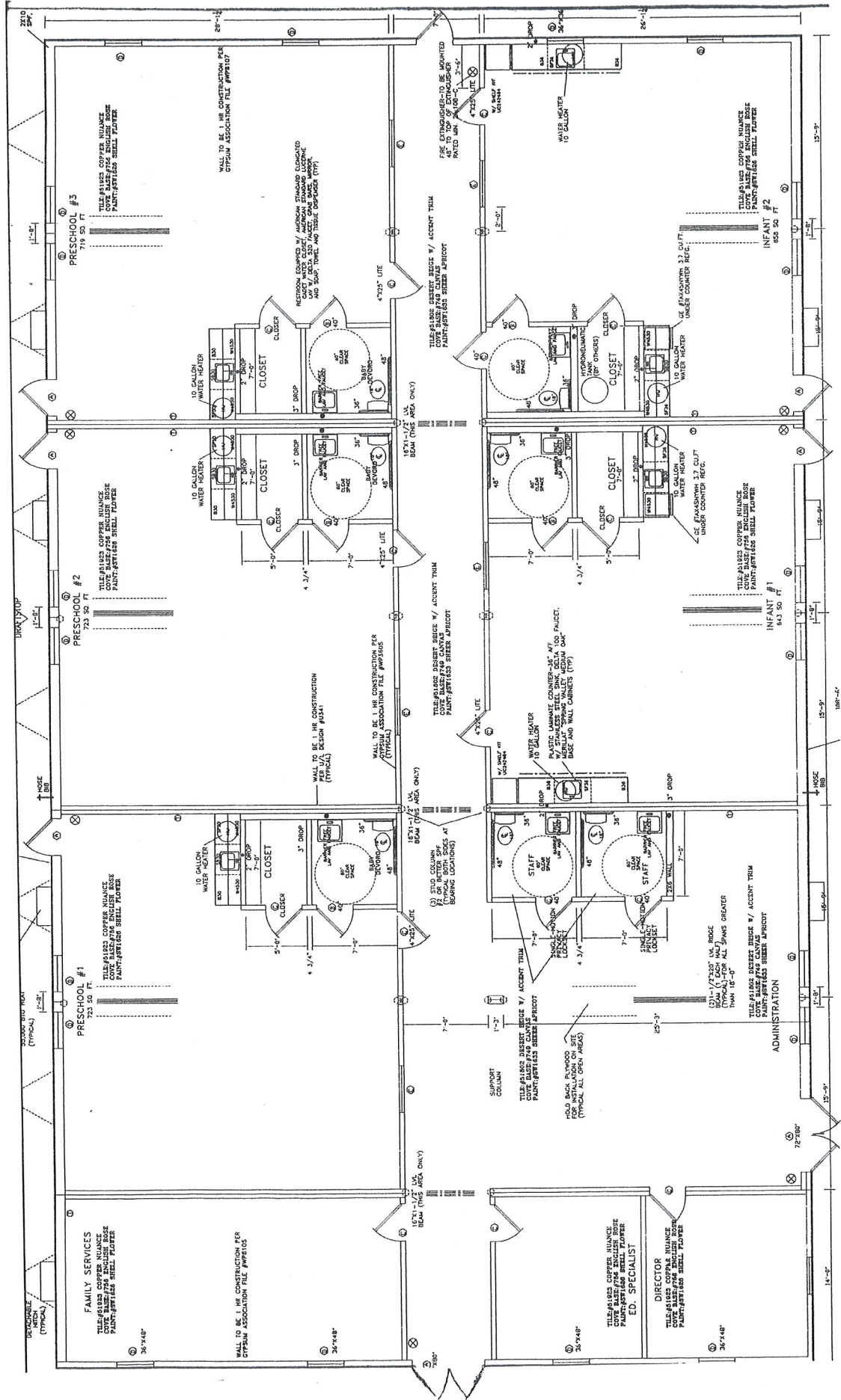
Watervliet, MI 49098

UNIT-A



Watervliet Migrant Head Start
SOUTH BUILDING
745 North M-140
Watervliet, MI 49098

2 of 2

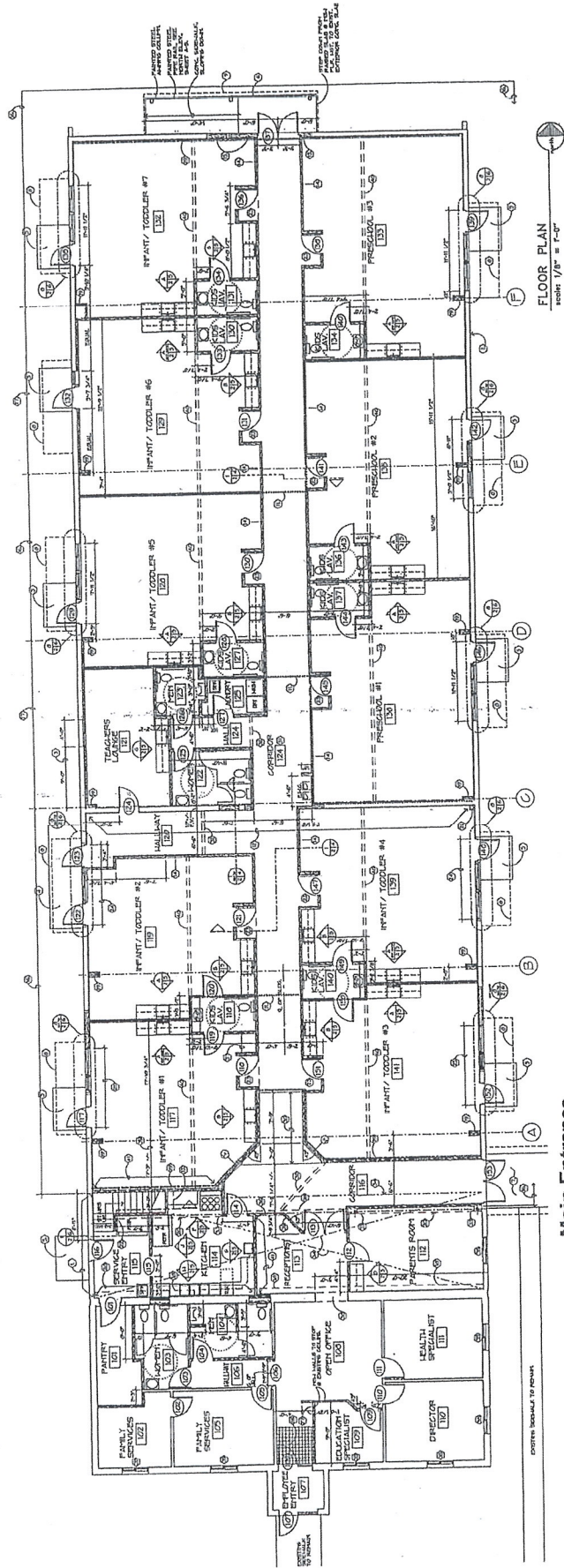


Main Entrance

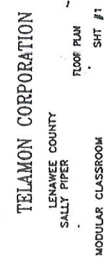
Kent City Migrant Head Start
 3385 Rusco Road
 Kent City, MI 49330

**DAYCARE ROOM APPROX.
 NET SQUARE FOOTAGES**

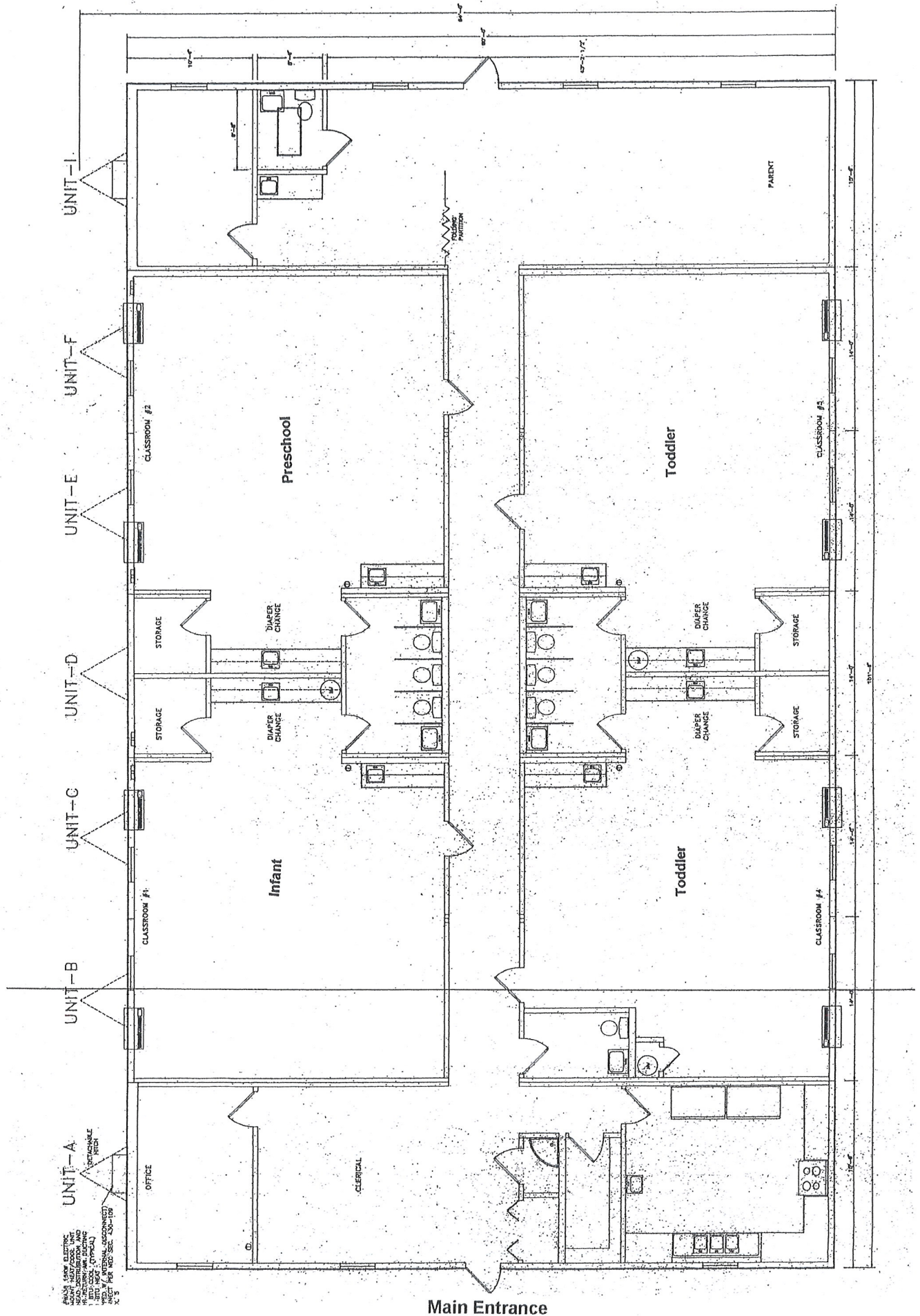
INFANT/ TODDLER #1	535 SQ. FT.
INFANT/ TODDLER #2	508 SQ. FT.
INFANT/ TODDLER #3	613 SQ. FT.
INFANT/ TODDLER #4	612 SQ. FT.
INFANT/ TODDLER #5	608 SQ. FT.
INFANT/ TODDLER #6	605 SQ. FT.
INFANT/ TODDLER #7	606 SQ. FT.
PRESCHOOL #1	707 SQ. FT.
PRESCHOOL #2	707 SQ. FT.
PRESCHOOL #3	707 SQ. FT.



1372 N. Adrian Highway
Adrian, MI 49221



Hart Migrant Head Start
 2354 East Polk Road
 Hart, MI 49420



NEW ERA MIGRANT HEAD START

3656 West Grant Road

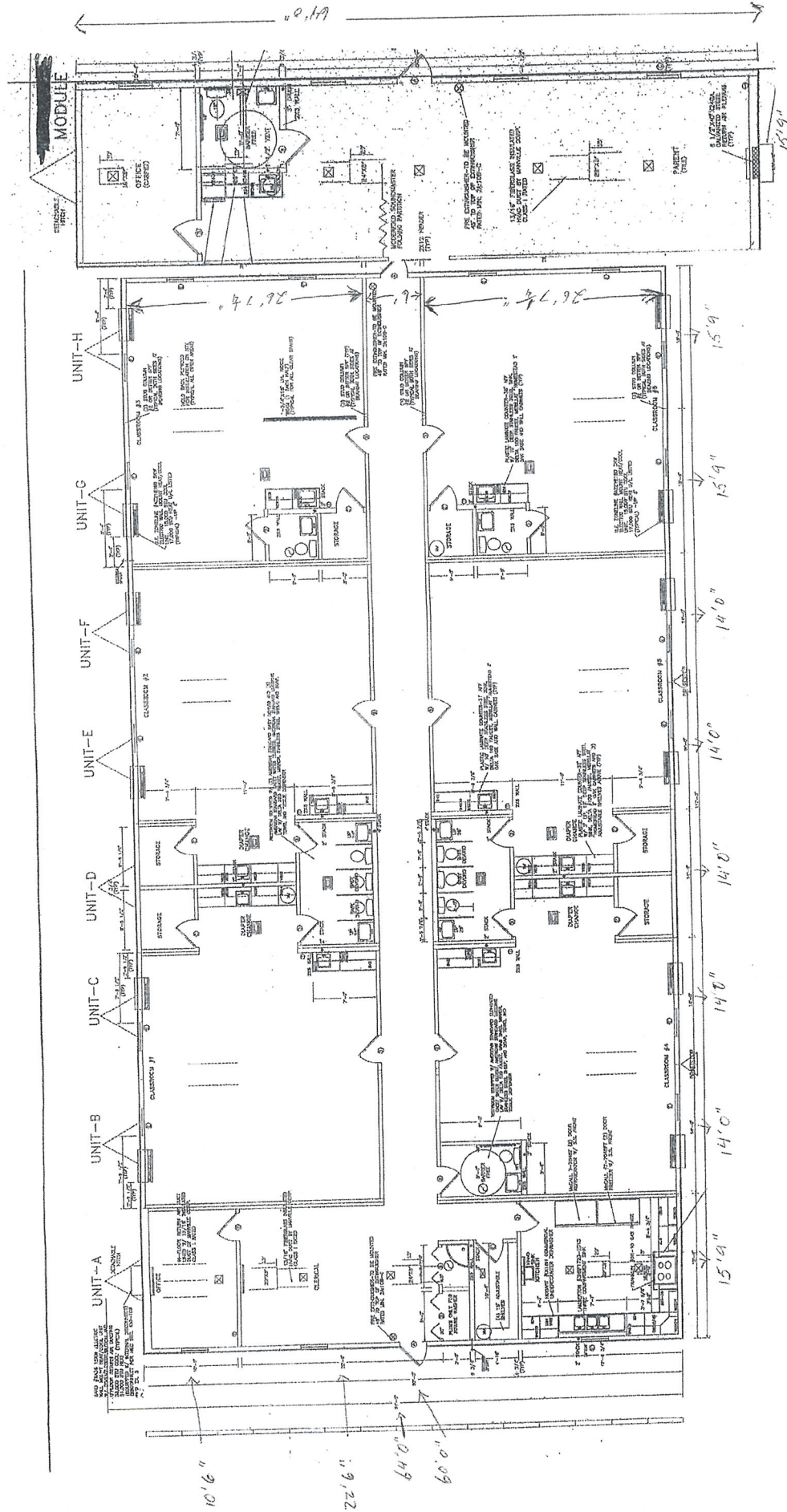
New Era, MI 49446



GROSS BUILDING AREA = 13,002 S.F.
OCCUPANT LOAD = 27 STAFF + MAX. 100 CHILDREN
USE GROUP = 1-2 CONSTR. TYPE = 5-A

BUILDING CODE OVERVIEW PLAN
SCALE: 1/8" = 1'-0"

Decatur Migrant Head Start
80195 County Road 358
Decatur, MI 49045



Keeler Migrant Head Start
89210 County Road 687
Hartford, MI 49057



GROSS BUILDING AREA = 13,002 S.F.
OCCUPANT LOAD = 27 STAFF + MAX. 100 CHILDREN
USE GROUP = 1-2 CONSTR. TYPE = 5-A

BUILDING CODE OVERVIEW PLAN
SCALE: 1/4" = 1'-0"