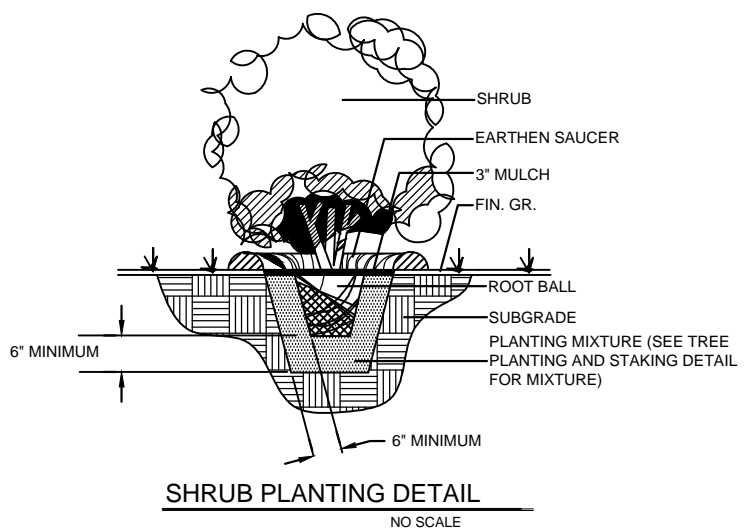


**LOCATION MAP
NOT TO SCALE**

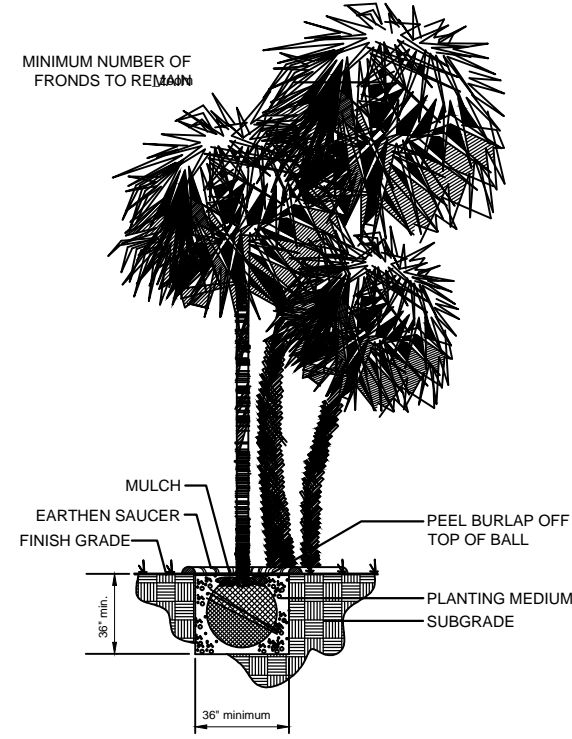
PLANT SPECIFICATIONS					
BOTANICAL NAME	COMMON NAME	ROOT	QTY.	UNIT	EXT.
<i>Sabal palmetto</i>	PALMETTO (HURRICANE CUT)	bare root	30		
<i>Rhaphiolepis 'Majestic Beauty'</i>	MAJESTIC BEAUTY HAWTHORN	3 GALLON	112		
<i>Juniperus davurica 'Parsoni'</i>	PARSONS JUNIPER	3 GALLON	226		
<i>Miscanthus sinensis 'Adagio'</i>	ADAGIO GRASS	3 GALLON	102		
<i>Muhlenbergia capillaris</i>	SWEET GRASS	3 GALLON	228		
	PINE STRAW MULCH (1 PER 40 SQFT)	BALE	82		
	WATERING OF PLANT MATERIAL	PER EVENT	25		
	BED PREPARATION	LUMP SUM	1		
				TOTAL BID	

PLANTING NOTES:

- * THE LANDSCAPE CONTRACTOR WILL BE HELD RESPONSIBLE FOR VERIFYING THE QUANTITY OF PLANTS SHOWN ON THE PLANTING PLAN. THE QUANTITY SHOWN IN THE PLANT MATERIAL LIST IS FOR CONVENIENCE ONLY.
- * CONTRACTOR VERIFIES THAT ALL PLANT MATERIAL IS DETERMINED AVAILABLE AS SPECIFIED WHEN BID/PROPOSAL IS SUBMITTED.
- * ANY DEVIATIONS FROM THE PLANT MATERIALS LIST MUST BE APPROVED PRIOR TO BIDDING, ORDERING, AND INSTALLATION BY THE LANDSCAPE ARCHITECT.
- * THE LANDSCAPE ARCHITECT RETAINS THE RIGHT TO REFUSE ALL PLANTS THAT DO NOT MEET ALL MINIMUM SPECIFICATIONS IN THE PLANT MATERIAL LIST.
- * ALL TREES, SHRUBS, AND GROUNDCOVERS SHALL MEET ALL MINIMUM SPECIFICATIONS FOR HEIGHT, WIDTH, AND STRUCTURE FOR THE ENTIRE PLANT.
- * ALL PLANT MATERIAL SIZES SHALL MEET OR EXCEED CURRENT AMERICAN STANDARDS FOR NURSERY STOCK.
- * DEAD OR DAMAGED LIMBS AND FRONDS ARE TO BE REMOVED FROM ALL EXISTING TREES THROUGHOUT THE SITE AND DISPOSED OF OFF SITE BY CONTRACTOR.
- * ALL LANDSCAPE AREAS ARE TO BE TREATED WITH HERBICIDE AND PRE-EMERGENCE PRIOR TO PLANT MATERIAL INSTALLATION.
- * ALL LANDSCAPE BEDS & NATURAL AREAS ARE TO RECEIVE PINE STRAW MULCH AT AN AVERAGE DEPTH OF NO LESS THAN 4 INCHES
- * THE LANDSCAPE CONTRACTOR WILL BE RESPONSIBLE FOR STAKING AND LAYOUT OF PLANTINGS ON THIS PROJECT. THE LANDSCAPE ARCHITECT OR OWNER SHALL BE ADVISED WHEN STAKES ARE READY FOR INSPECTION ON VARIOUS PLANTING AREAS. ALL LAYOUT WORK SHALL BE INSPECTED AND APPROVED BY THE LANDSCAPE ARCHITECT PRIOR TO OPENING ANY PLANT PITS. PLANTING BEDS TO START NO LESS THAN 100' FROM MEDIAN CROSSINGS.
- * NO EXCAVATION OR PLANTING PIT SHALL BE LEFT OPEN OVERNIGHT.
- * FINE HAND GRADING TO INCLUDE REMOVING DEBRIS AND PROVIDING A SMOOTH RAKED SURFACE FOR ALL AREAS RECEIVING PLANTINGS, SOD/SEED, AND PINE STRAW MULCH.
- * CONTRACTOR SHALL BE RESPONSIBLE FOR VERIFYING ALL UTILITY LOCATIONS. CONTACT PUPS (PALMETTO UTILITY PROTECTION SERVICE) @ 1-800-922-0983 AT LEAST 3 WORKING DAYS PRIOR TO DIGGING. CONTRACTOR SHALL BEAR ALL RESPONSIBILITY FOR FEES AND ANY DAMAGES DONE TO UTILITIES DURING CONSTRUCTION.
- * THE LANDSCAPE CONTRACTOR IS RESPONSIBLE FOR MAINTENANCE FOR A MINIMUM OF 30 DAYS AFTER DATE OF FINAL ACCEPTANCE.
- * ALL PLANT MATERIAL WILL BE GUARANTEED FOR ONE CALENDAR YEAR FROM DATE OF FINAL ACCEPTANCE. PLANTS MUST BE IN SATISFACTORY CONDITION AT THE END OF THE GUARANTEED PERIOD. LANDSCAPE CONTRACTOR IS RESPONSIBLE FOR WATERING PLANTINGS AS NECESSARY DURING ONE YEAR WARRANTY.
- * THE OWNER IS RESPONSIBLE FOR PROPER MAINTENANCE DURING THE WARRANTY PERIOD. THE CONTRACTOR SHALL NOTIFY THE OWNER IN WRITING IF MAINTENANCE IS UNSATISFACTORY. CONTINUATION OF IMPROPER MAINTENANCE OR ACTS OF GOD OR VANDALISM WILL VOID WARRANTY. CONTRACTOR SHALL PROVIDE MAINTENANCE INSTRUCTIONS TO THE OWNER BEFORE FINAL PAYMENT IS MADE. OWNER WILL HOLD 5% RETAINAGE UNTIL END OF WARRANTY PERIOD. RETAINAGE WILL BE RELEASED WHEN ALL PLANT REPLACEMENTS HAVE BEEN SATISFIED.



SHRUB PLANTING DETAIL
NO SCALE



PALMETTO PLANTING DETAIL
NO SCALE



P.O. Box 213
1066 Petigru Dr.
Pawleys Island, SC 29585
843-237-2224
843-237-1116 fax

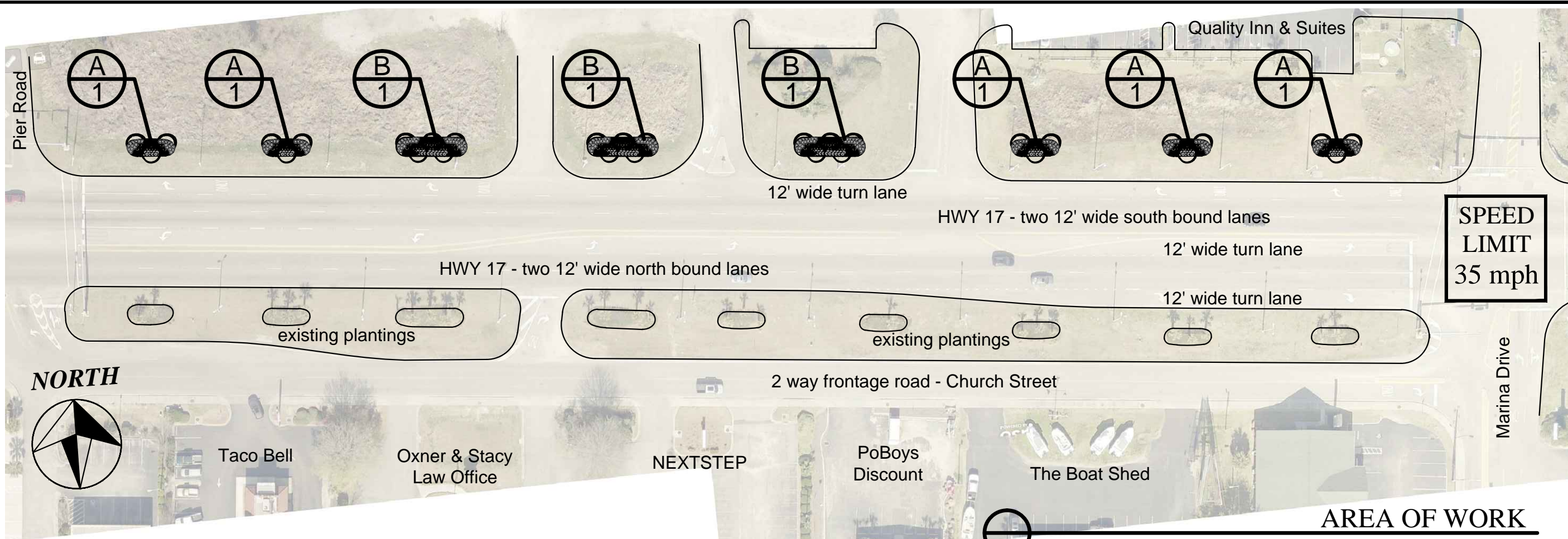
HWY 17 NORTH ENTRY ROADSIDE PLANTINGS
CITY OF GEORGETOWN
GEORGETOWN, SOUTH CAROLINA

SHEET TITLE:
DETAILS & PLANT SCHEDULE
DRAWN BY:
JCR/CB
DATE:
1/18/19

REVISIONS:

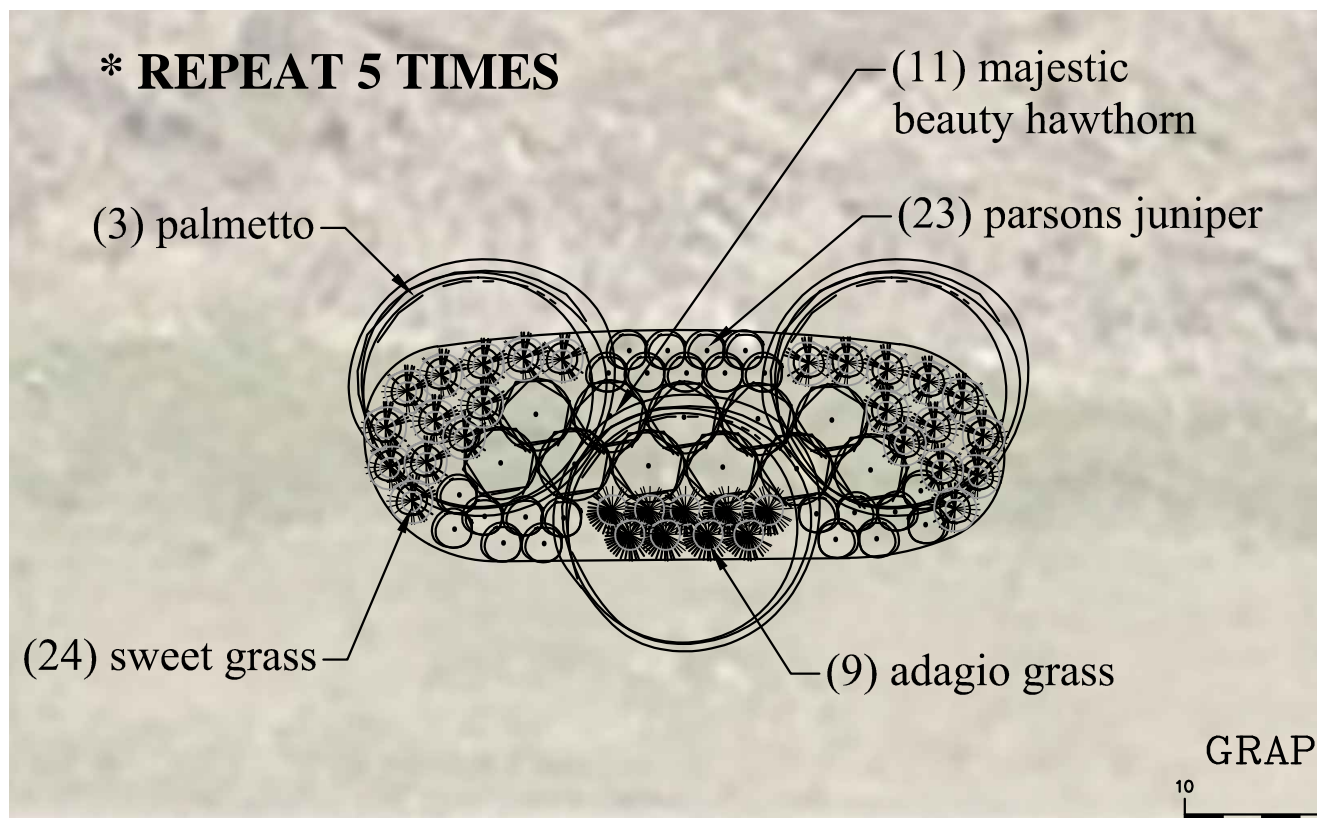
SHEET NUMBER
1
OF 2

NOTE: THIS PLAN IS THE PROPERTY OF WACCAMAW LANDSCAPING AND CONSTRUCTION CO., INC., PAWLEYS ISLAND, SOUTH CAROLINA.

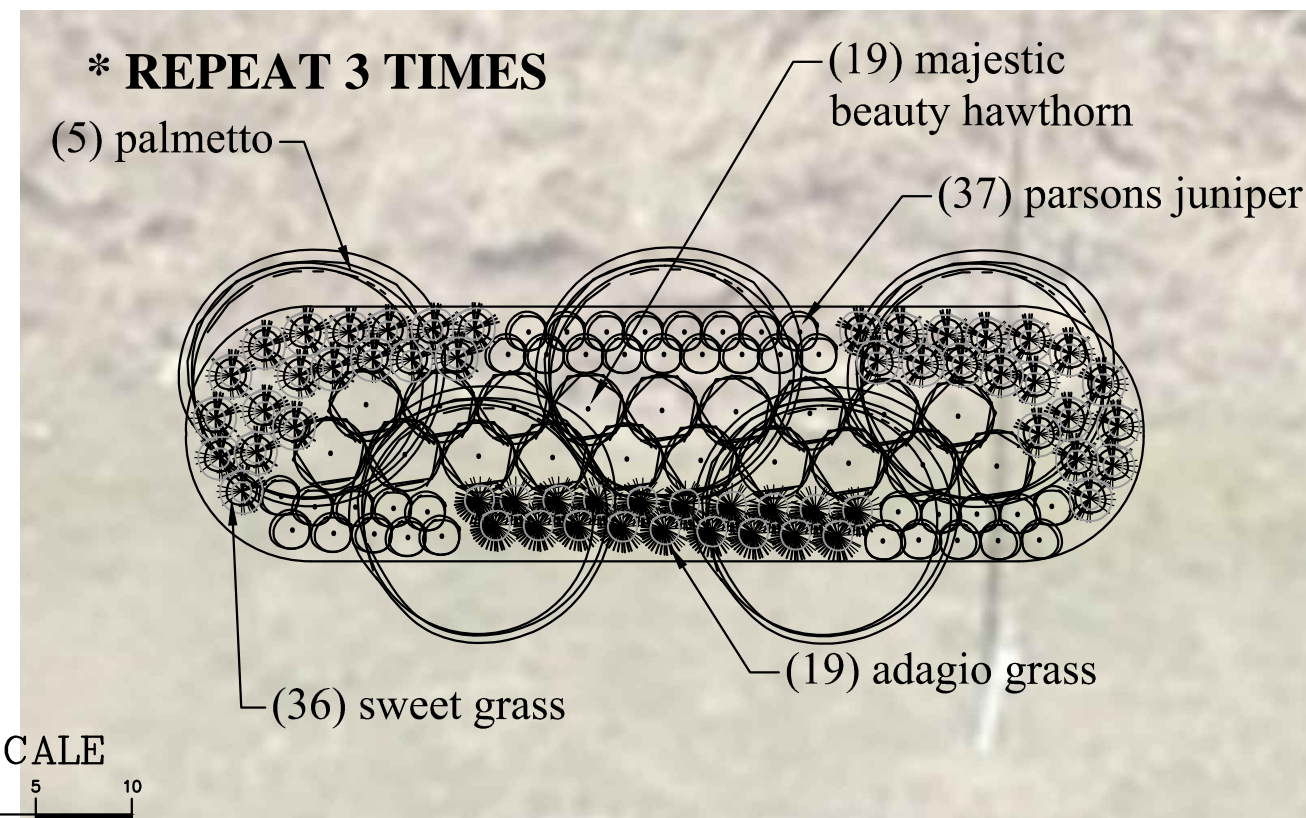
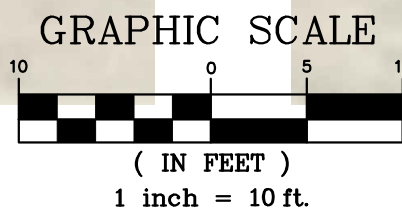


*** TRAFFIC VOLUME = 24,000 ADT**

**AREA OF WORK
NOT TO SCALE**



A
1 PLANTING BED #1
SCALE: 1" = 10'



B
1 PLANTING BED #1
SCALE: 1" = 10'



P.O. Box 213
1066 Petigru Dr.
Pawleys Island, SC 29585
843-237-2224
843-237-1116 fax

HWY 17 NORTH ENTRY ROADSIDE PLANTINGS
CITY OF GEORGETOWN
GEORGETOWN, SOUTH CAROLINA

SHEET TITLE:
LANDSCAPE PLAN

DRAWN BY:
JCR/CB

DATE:
1/18/19

REVISIONS:

SHEET NUMBER

2

OF 2