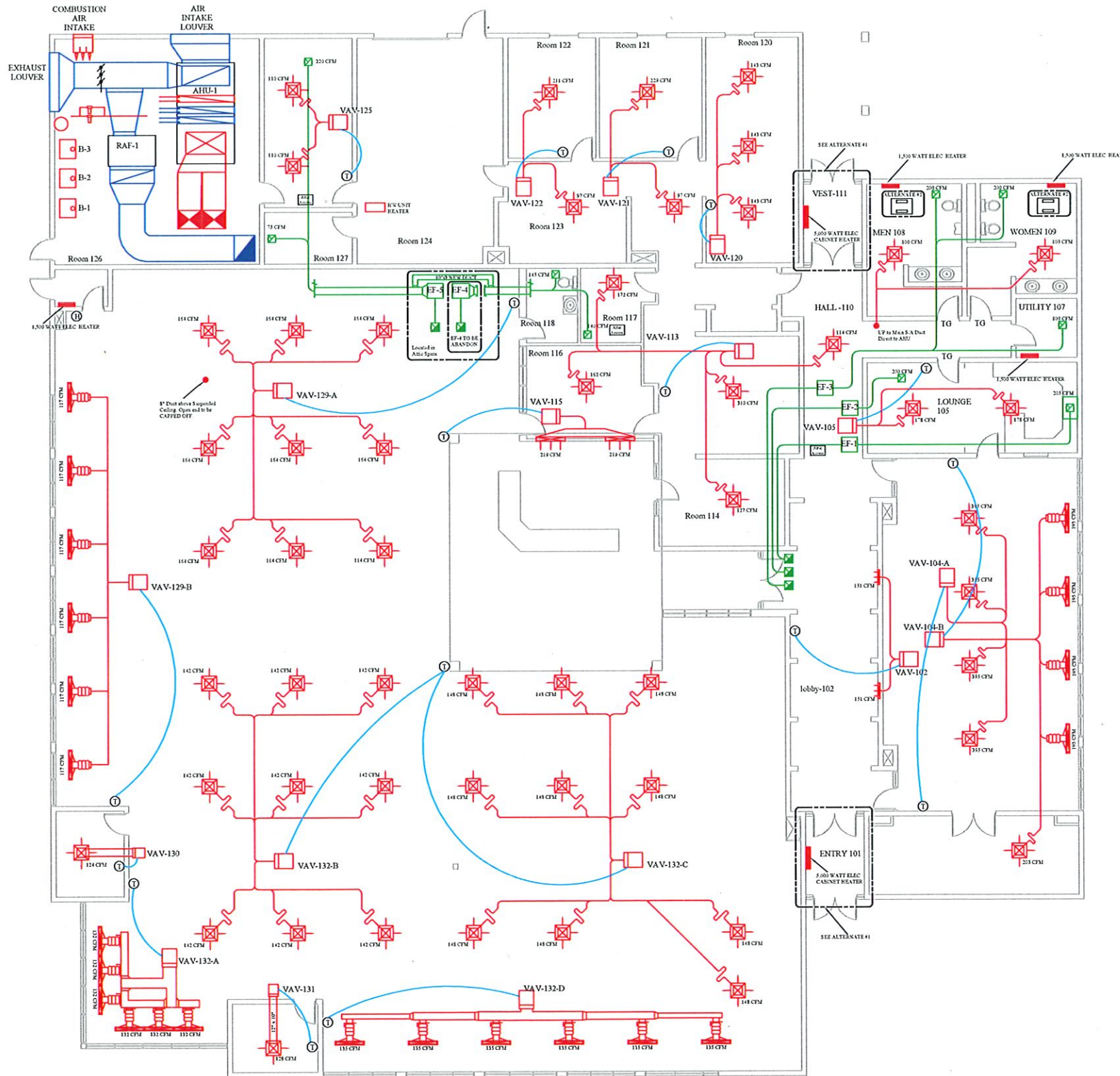


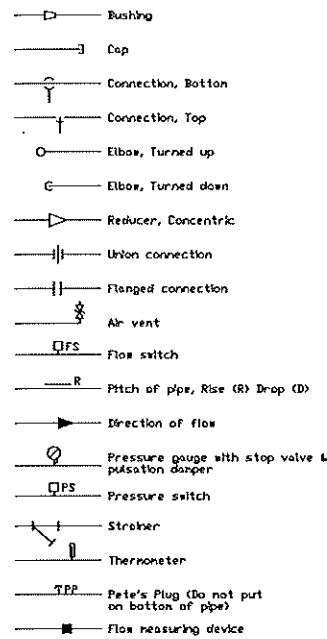
- DUCTWORK SYMBOLS**
- Indicates installation of new or reused ductwork.
  - 14' wide, 8' deep duct
  - 6" round duct
  - 6" round duct
  - Supply or outside air duct
  - Return air duct
  - Exhaust air duct
  - Duct up thru roof or floor
  - Lines indicate a duct transition or joint
  - Square to round transition
  - Change in elevation. Rise (R) Drop (D)
  - Duct transition - Flat on top
  - Duct transition - Flat on bottom
  - Access door
  - Canvas connection
  - Standard branch, supply or return, no splitter, with 45 flare
  - Standard branch, supply or return, no splitter, with 45 flare
  - Duct turning vanes
  - Manual volume damper in duct. Provide ceiling access for adjustment. Provide external quadrant & thumb screw for setting & determining position of damper blade.
  - Fire damper in duct. Provide ceiling & duct access for service.
  - Smoke damper in duct. Provide ceiling & duct access for service.
  - Motor operated damper. Provide ceiling & duct access for service.
  - Supply diffuser. Type indicated by enclosed letter. (See schedule). 100 is CFM. Arrows shown when not 4-way blow.
  - Wall supply air. Same designation as ceiling diffuser. (See schedule)
  - Ceiling return air or exhaust grille. Type indicated by enclosed letter. (See schedule)



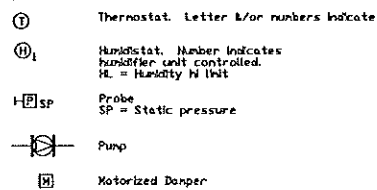
HVAC PLAN VIEW 1/8"=1'

<p style="text-align: center;">SHEET INDEX</p> <table border="1" style="width: 100%; border-collapse: collapse;"> <tr><td style="width: 50%; height: 20px;"> </td><td style="width: 50%; height: 20px;"> </td></tr> <tr><td style="width: 50%; height: 20px;"> </td><td style="width: 50%; height: 20px;"> </td></tr> <tr><td style="width: 50%; height: 20px;"> </td><td style="width: 50%; height: 20px;"> </td></tr> </table>							<p style="text-align: center;">SHEET INDEX</p> <table border="1" style="width: 100%; border-collapse: collapse;"> <tr><td style="width: 50%; height: 20px;"> </td><td style="width: 50%; height: 20px;"> </td></tr> <tr><td style="width: 50%; height: 20px;"> </td><td style="width: 50%; height: 20px;"> </td></tr> <tr><td style="width: 50%; height: 20px;"> </td><td style="width: 50%; height: 20px;"> </td></tr> </table>						
<p>ANTIGO CITY LIBRARY Antigo Wisconsin</p> <p style="font-size: small;">REVISIONS: STANLEY A. GRAY, JR.</p>	<p>HEATING &amp; VENTILATING PLAN VIEW</p> <p>DETAILS</p> <p>NOTES AND SCHEDULES</p>												
<p>Product: Refrigeration Control Systems, Inc.        711 Washington Street        P.O. Box 1532        Rhinelander, Wisconsin 54851        715-865-0208</p>													
<p><b>HVAC PLAN VIEW</b></p>													
<p>DATE: 6-22-2020</p>	<p>NO: HV-1</p>												

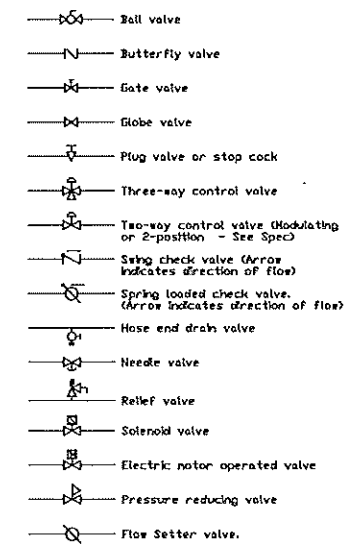
PIPING SYMBOLS



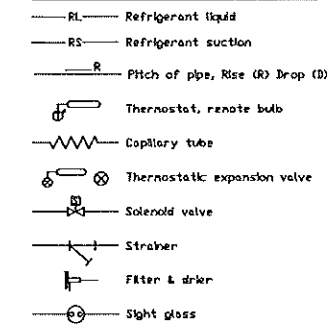
MISCELLANEOUS SYMBOLS



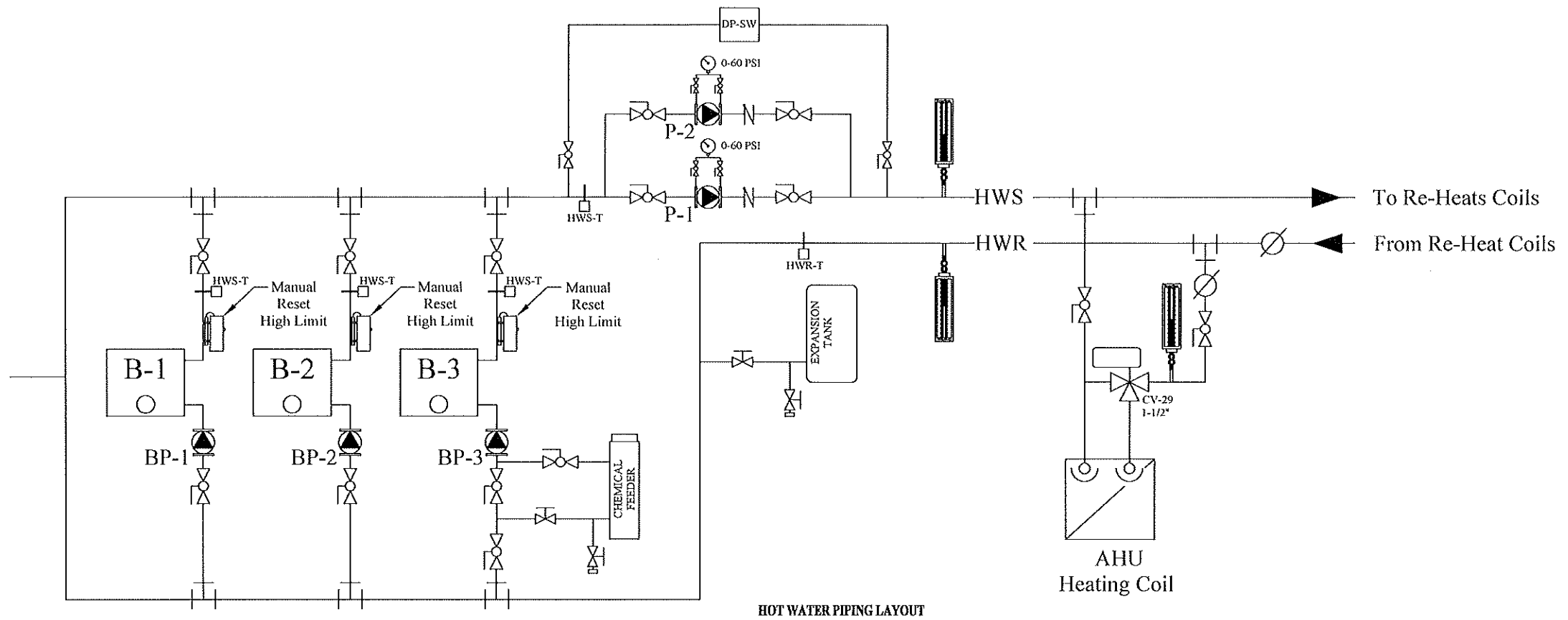
VALVE SYMBOLS



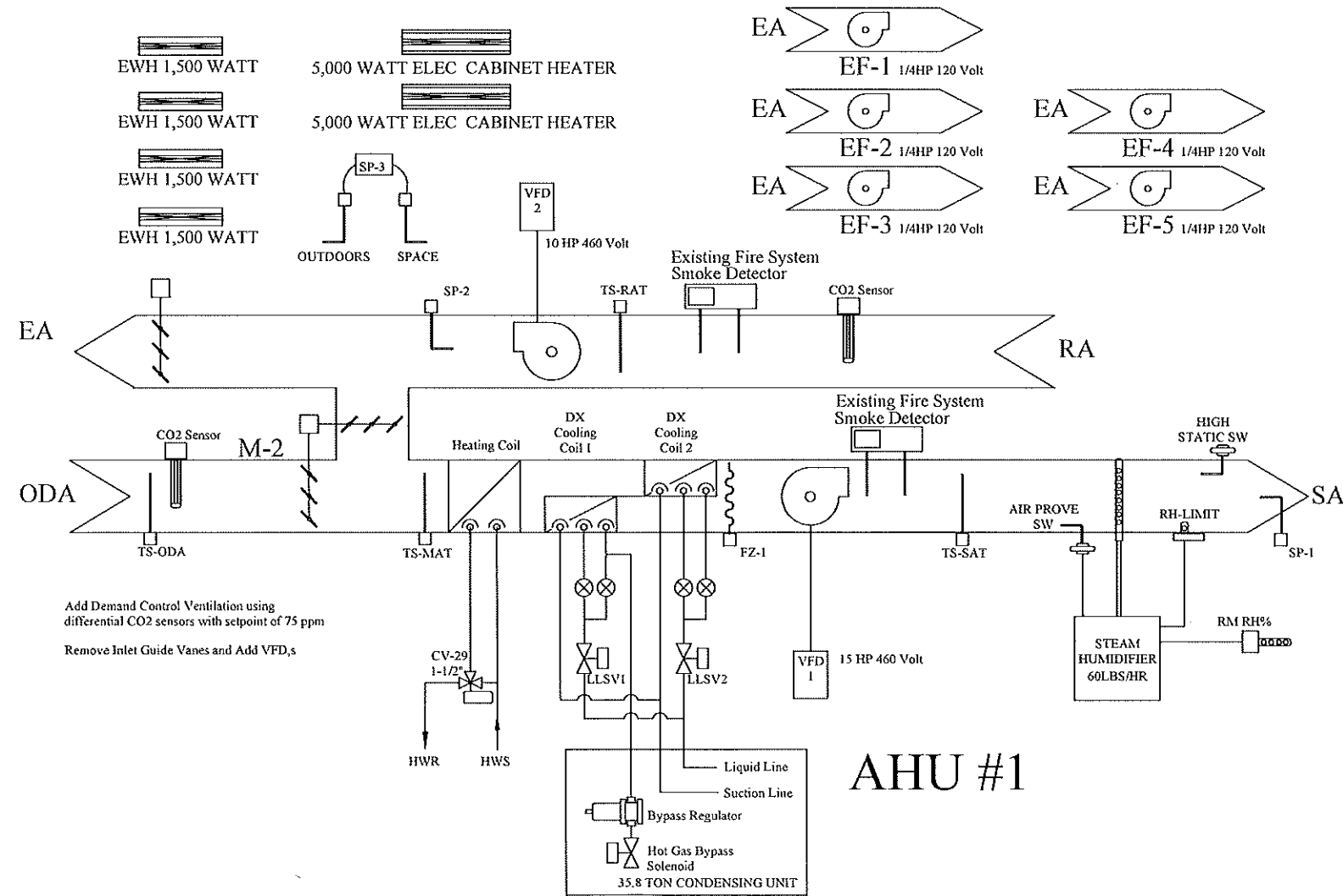
REFRIGERATION SYMBOLS



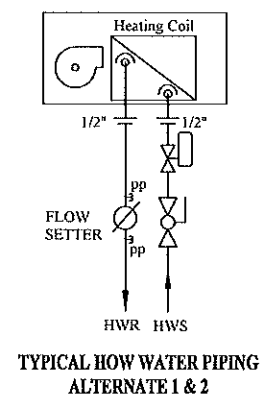
Note: All symbols may not be



HOT WATER PIPING LAYOUT



AHU #1



TYPICAL HOW WATER PIPING ALTERNATE 1 & 2

SHEET INDEX  
 Heating & Ventilating Plan View  
 ANTIGO CITY LIBRARY Antigo, Wisconsin  
 PROJECT: STANLEY A. GRYS, JR.  
 PREPARED BY: Stanley A. Gry's, Jr.  
 714 Washington Street  
 PO Box 1423  
 Antigo, Wisconsin 54611  
 715-254-2529  
 HVAC DETAILS  
 HV-2

