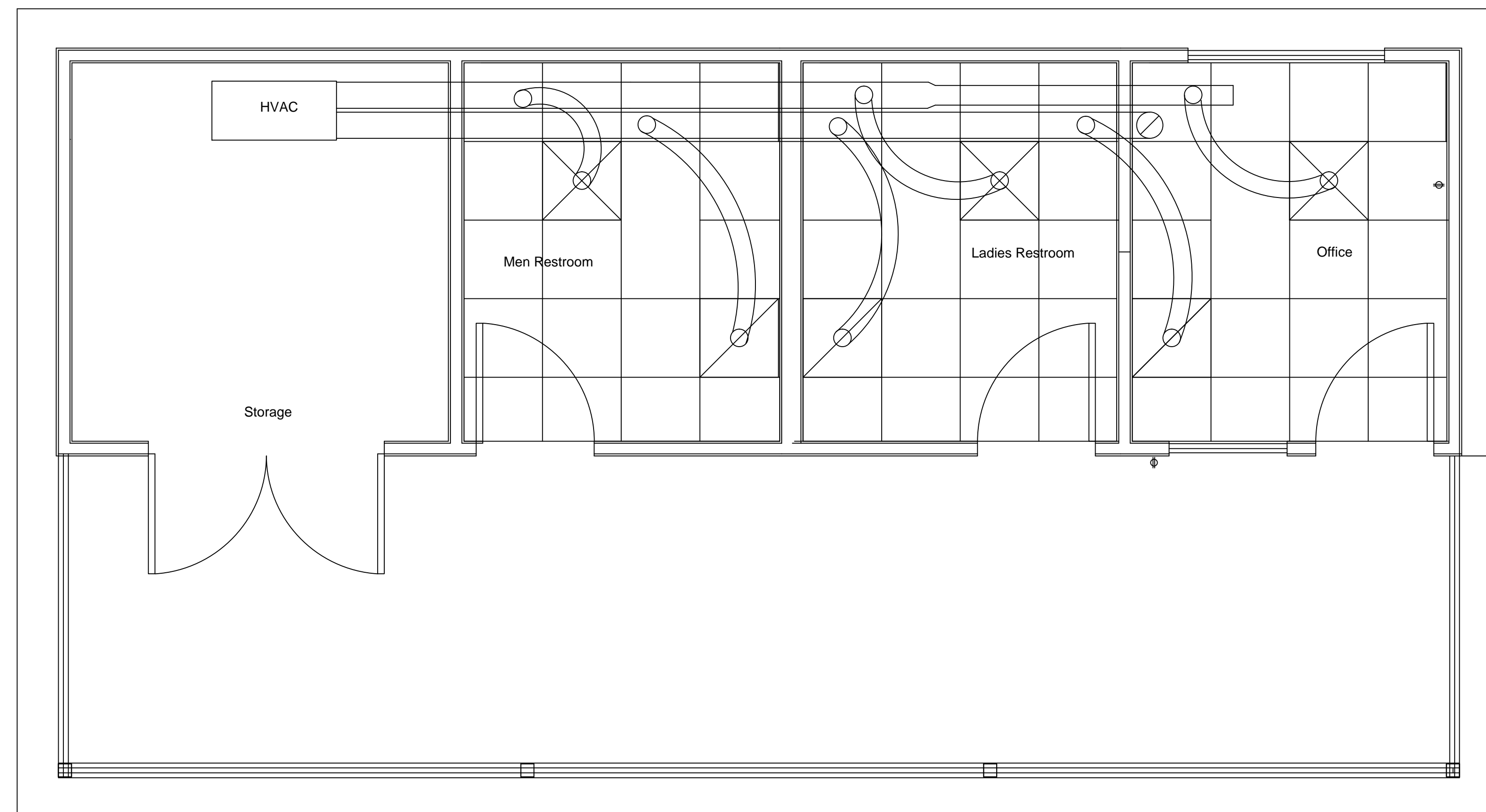


Notes:

1. Contractor to install 1-1.5 ton HVAC split system and place on bottom truss chord in Storage Room.
2. Contractor to install 1-1.5 ton split system 13 seer.
3. The condenser will be placed in a location in masonry structure. (exact location to be determined)
4. Contractor to install metal insulated duct primary lines and branch line can be flexible duct.



NOT TO SCALE

Drawn By	DC	REV.	DESCRIPTION	DATE	BY
Checked By	SP				
App'd By	DC				
Date	AUG/16/2017				

**CITY OF SPARTANBURG  
CONSTRUCTION MANAGEMENT**

HOT SPOT SKATE PARK  
BUILDING REPLACEMENT

DESCRIPTION; Mechanical Plan	Dwg. No.
Scale : NTS	M-1 2 of