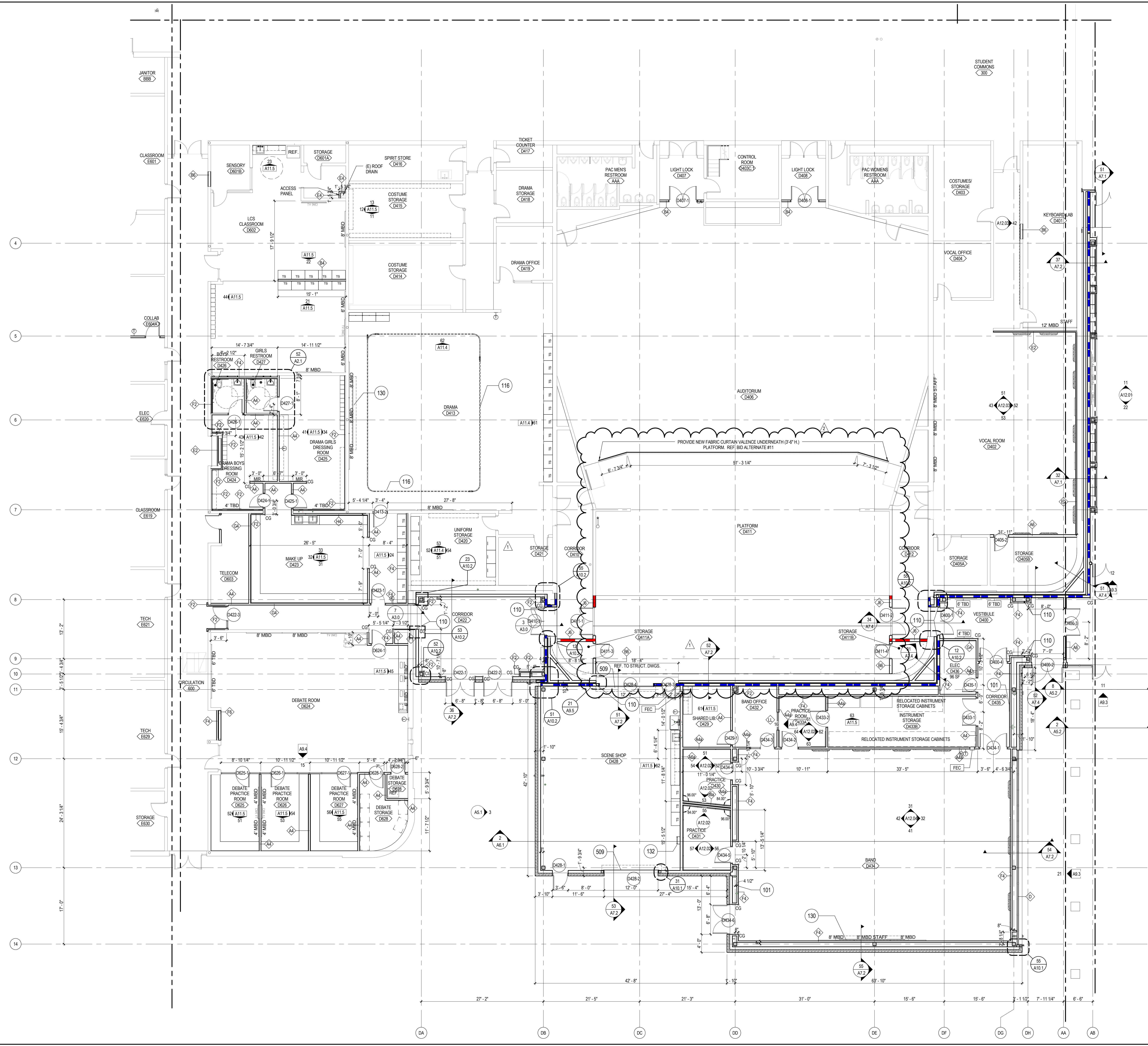


C:\Revit\2\171930_AR_2016_CENTRAL_investments\10\1A.rvt
3/9/2016 3:04:45 PM



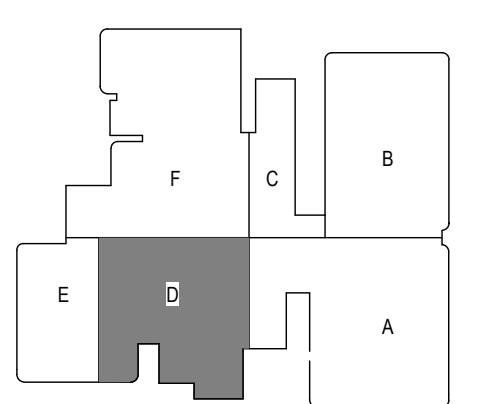
LEGEND NOTES

- EXISTING WALL OR PARTITION
- NEW WALL, REFER TO WALL TYPE
- NEW FIRE RATED WALL, REFER TO WALL TYPE
- NEW CONCRETE WALL, REFER TO STRUCT.

KEYNOTE LEGEND - FLOOR PLAN

101	ACCESS PANEL
110	EXPANSION JOINT
116	FABRIC CURTAIN WITH CEILING TRACK. REFER TO SPECIFICATIONS.
130	PROJECTION SCREEN. REFER TO SPECIFICATIONS & INTERIOR ELEVATIONS
132	ROOF ACCESS LADDER. REFER TO SPECIFICATIONS

KEY PLAN



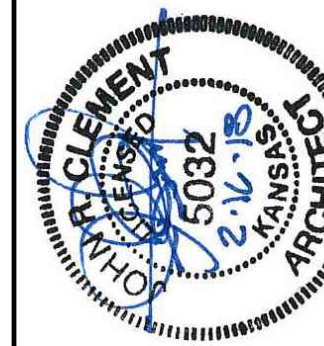
**FLOOR PLAN - AREA D
PITTSBURG HIGH SCHOOL
PITTSBURG USD NO. 250**

A1.4
12-177119-00



1873 E. 4TH ST.
PITTSBURG, KS 66762

PLAN NORTH
TRUE NORTH



1879 E. 4TH ST.
PITTSBURG, NC 28662

FIRST LEVEL FINISH FLOOR PLAN - AREA D

PITTSBURG HIGH SCHOOL

PITTSBURG USD NO. 250

A13.4
12-17-19-00
Revision
DATE
BY

CGA
Construction Graphics Associates
1000 S. W. 10th St.
P.O. Box 1000
Pittsburg, NC 28662
919.236.3134 441.726.3137

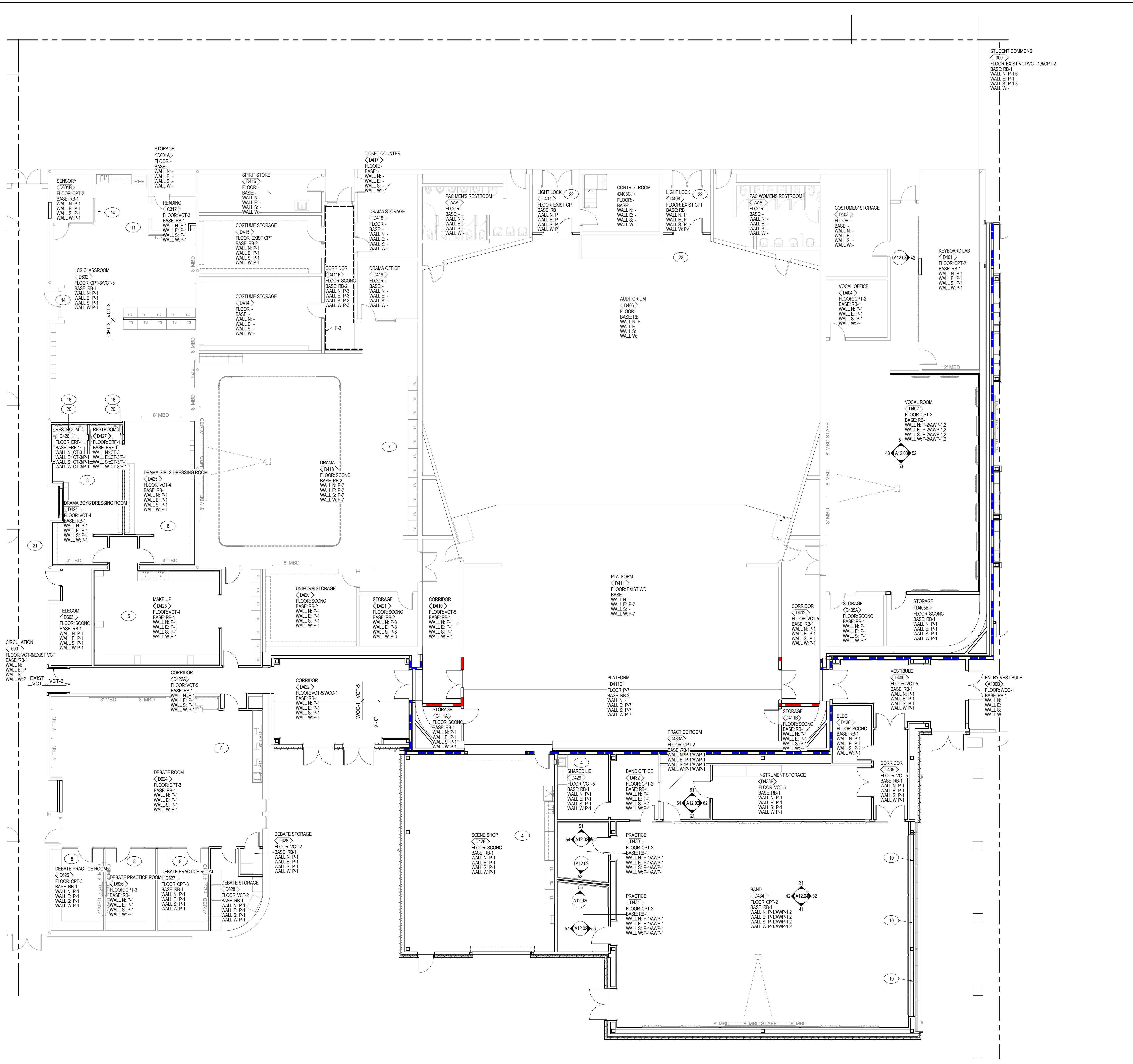
DJR Group
Architecture Engineering Planning Interiors
© DJR Group, Inc. a Texas corporation. All rights reserved.

FINISH PLAN LEGEND

ACP	ACOUSTICAL CEILING PANELS
AWP	ACOUSTICAL WALL PANELS
CPT	CARPET
CT	CERAMIC TILE
DSP	DETENTION SURFACE PADDING
DWC	DRY ERASE WALLCOVERING
EP	EPOXY PAINT
ERF	EPOXY RESIN FLOORING
EXP STR	EXPOSED STRUCTURE
EXIST BR	EXISTING BRICK
FB	FACE BRICK
GL	GLASS
GWB	GYPSUM WALL BOARD
GWC	GRAPHIC WALL COVERING
P	PAINT
PCP	POLYCARBONATE PANELS
PL	PLASTIC LAMINATE
PLYWD	PLYWOOD
PT	PORCELAIN TILE
RB	RUBBER BASE
SSCONC	SEALED CONCRETE
SSCONC	SATIN TOP COAT SEALED CONCRETE
SS	SOLID SURFACE
TWF	TACK WALL
VCT	VINYL COMPOSITION TILE
WD	WOOD
WSP	WALL SAFETY PADS
WOC	WALK-OFF CARPET

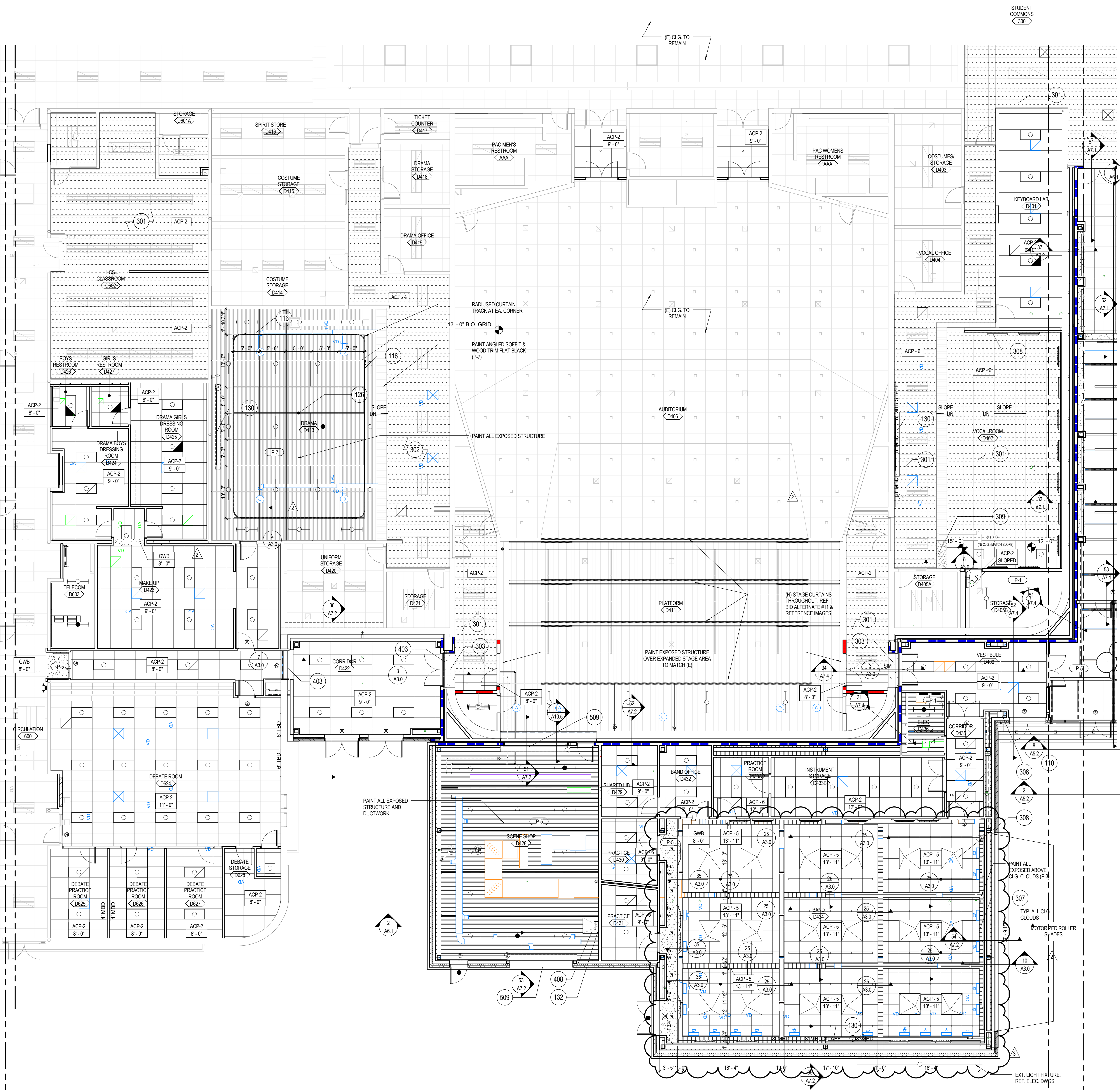
- FINISH PLAN GENERAL NOTES**
- SEE SPECIFICATIONS FOR PAINTING OF ITEMS NOT NOTED IN THE ROOM FINISH SCHEDULE.
 - EXPOSED CONCRETE FLOOR SLABS NOT SCHEDULED TO RECEIVE A FINISH SHALL RECEIVE A CURING AND SEALING COMPOUND UNLESS OTHERWISE NOTED.
 - ALL GYPSUM WALLBOARD BULKHEADS SHALL BE PAINTED UNLESS OTHERWISE NOTED.
 - CEILING HEIGHTS, AS NOTED ON THE REFLECTED CEILING PLANS ARE MEASURED FROM THE FINISH FLOOR OF THE ROOM. CONTRACTOR SHALL FURNISH AND INSTALL WALL BASE AROUND CASEWORK AND MILLWORK.
 - WHERE FLOOR FINISH CHANGES FROM ONE ROOM TO ANOTHER, SET JOINT OF THE MATERIALS AT THE CENTER OF THE COMMUNICATING DOOR.
 - WHERE EXPOSED STRUCTURE IS NOTED TO BE PAINTED, PAINT TRUSSES, METAL BECK, PIPES, DUCTS, ETC.
 - DO NOT APPLY RUBBER BASE TO FACE BRICK.
 - DO NOT PAINT FACE BRICK UNLESS OTHERWISE NOTED.
 - PAINT DOOR FRAMES P-3, UNLESS OTHERWISE NOTED. PAINT NEW DOORS AND FRAMES IN EXISTING CORRIDORS TO MATCH ADJACENT DOOR FRAMES.
 - PAINT STEEL COLUMNS EP-3, UNLESS OTHERWISE NOTED.
 - SEE FINISH PLANS FOR FLOOR AND/OR WALL FINISH LOCATIONS.
 - SEE INTERIOR ELEVATIONS AND/OR CASEWORK/MILLWORK ELEV. FOR MATERIAL AND FINISH LOCATIONS.
 - SEE REFLECTED CEILING PLANS FOR PAINT AND MATERIAL LOCATIONS.
 - WHERE ROOM WALL FINISH IS PLYWD, INSTALL PLYWOOD SHEATHING 2'-0" A.F.F. TO 8'-0" A.F.F. WITH GWB ABOVE AND BELOW. PAINT AS SCHEDULED.

- FINISH PLAN SPECIFIC NOTES**
- PLASTIC LAMINATE UPPER, LOWER AND TALL CABINETS TO BE PL-1, COUNTER TOP TO BE PL-2.
 - PLASTIC LAMINATE UPPER, LOWER AND TALL CABINETS TO BE PL-1, COUNTER TOP TO BE PL-3.
 - PLASTIC LAMINATE UPPER, LOWER AND TALL CABINETS TO BE PL-4, COUNTER TOP TO BE PL-5.
 - PLASTIC LAMINATE UPPER, LOWER AND TALL CABINETS TO BE PL-1, COUNTER TOP TO BE PL-6.
 - PLASTIC LAMINATE UPPER, LOWER AND TALL CABINETS TO BE PL-12, COUNTER TOP TO BE PL-13.
 - PLASTIC LAMINATE UPPER, LOWER, AND TALL CABINETS TO BE PL-8, COUNTER TOP TO BE BLACK EPOXY RESIN.
 - PLASTIC LAMINATE CABINETS TO BE PL-10.
 - PLASTIC LAMINATE TO BE PL-6.
 - SEE INTERIOR ELEVATIONS.
 - WINDOW SHADES, SEE SPECIFICATIONS.
 - PLASTIC LAMINATE UPPER, LOWER, AND TALL CABINETS TO BE PL-1, COUNTER TOP TO BE PL-14.
 - PLASTIC LAMINATE CABINETS, PL-8, COUNTER TOP AT WALL TO BE PL-6, ISLAND COUNTER TOP TO BE PL-2.
 - INSTALL CT-2 FULL HEIGHT ON WET WALL, HORIZONTAL STACKBOND. INSTALL CT-1 TO 48" HIGH ON THREE WALLS, HORIZONTAL STACKBOND, PAINT ABOVE.
 - PAINT EXISTING MASONRY AT UPPER PART OF ROOM TO MATCH ADJACENT WALL COLOR. PAINT MASONRY IN DOOR TRANSOM TO MATCH DOOR FRAME COLOR.
 - PANT WALL TO MATCH EXISTING COLOR ON ADJACENT WALLS.
 - INSTALL CT-3 FULL HEIGHT ON WET WALL. INSTALL CT-3 TO 48" HIGH, PAINT ABOVE ON THREE WALLS.
 - PLASTIC LAMINATE UPPER, LOWER, AND TALL CABINETS PL-15, COUNTER TOP TO BE BLACK EPOXY RESIN.
 - WOOD LABORATORY CABINETS WITH BLACK EPOXY RESIN COUNTER TOPS. ALTERNATE NO. 6.
 - PANT ENTIRE CORRIDOR WALL, MATCH EXISTING CORRIDOR PAINT. PAINT ACCENT PAINT AS NOTED.
 - SATIN SEALED CONCRETE, SSSCONC WITH CERAMIC TILE BASE, ALTERNATE NO. 5.
 - PAINT NEW DOOR FRAMES, SLEDGELIGHTS AND WALL TO MATCH EXISTING CORRIDOR FINISHES.
 - PANT WALLS TO MATCH ADJACENT WALLS. MATCH EXISTING RUBBER BASE. FLOOR FINISH TO REMAIN.
 - PLASTIC LAMINATE UPPER, LOWER AND TALL CABINETS TO BE PL-6, WALL COUNTER TOP TO BE PL-2, ISLAND COUNTER TOPS TO BE SOLID SURFACE SS-2.



FINISHED FLOOR PLAN AREA D
SCALE: 1/8" = 1'-0"
NORTH

C:\Revit\2018\1719_00_AR_2018_CENTRAL_invest\sheet\1719_00_A1.vrt
3/12/2018 11:19:28 PM



1 FIRST LEVEL REFLECTED CEILING PLAN - AREA D
SCALE: 1/8" = 1'-0"

LEGEND NOTES

REFLECTED CEILING PLAN NOTES
REFLECTED CEILING PLAN GENERAL NOTES APPLY TO ALL REFLECTED CEILING PLAN SHEETS. ALL CEILING GRIDS/PANELS SHALL BE CENTERED IN EACH ROOM UNLESS NOTED OTHERWISE. CEILING HEIGHTS ARE AS NOTED ON THE REFLECTED CEILING PLAN UNLESS NOTED OTHERWISE.
ALL ELECTRICAL FIXTURES, SPEAKERS, SMOKE AND THERMAL DETECTORS, MECHANICAL GRILLES, SPRINKLER HEADS, ETC., SHALL BE CENTERED BETWEEN CEILING GRIDS UNLESS NOTED OTHERWISE. SPRINKLER HEADS SHALL BE WITHIN A 7" RADIUS, CENTERED BETWEEN CEILING GRIDS. IN ACOUSTICAL CEILING PANELS WITH SCORE IN THE CENTER, CENTER DEVICES REFERENCED IN NOTED, IN ONE HALF OF THE TILE. DO NOT LOCATE ON THE SCORE. FOR APC WITH MULTIPLE SCORED PATTERNS, COORDINATE LOCATION WITH ARCHITECT.
PROVIDE SUSPENSION SYSTEM AROUND ELECTRICAL FIXTURES, MECHANICAL GRILLES, DIFFUSERS, ETC. AT ACOUSTICAL PANEL CEILING. ALL DIMENSIONS ON REFLECTED CEILING PLANS ARE ACTUAL AND ARE TO THE FOLLOWING UNLESS NOTED OTHERWISE:
1. FACE OF FINISHED WALL
2. FACE OF FINISHED BULKHEADS
3. CENTERLINE OF COLUMNS
4. CENTERLINE OF TEES
IN AREAS WITH EXPOSED STRUCTURE CEILING, COORDINATE EXACT LOCATIONS OF MECHANICAL GRILLES, DIFFUSERS, DUCTWORK AND ELECTRICAL FIXTURES WITH EACH RESPECTIVE SUBCONTRACTOR.
ALL WALLS EXTEND TO UNDERSIDE OF DECK EXCEPT THOSE SHOWN SHADED IN WHICH GYPSUM BOARD OR MASONRY EXTENDS MIN. 4" ABOVE FINISHED CEILING. ALL METAL STUDS EXTEND TO UNDERSIDE OF STRUCTURE.

NOTE: MODIFY (E) CEILING TILE AS NECESSARY FOR (N) AUTOMATIC SPRINKLER SYSTEM. REFER TO PLUMBING DRAWINGS FOR EXTENTS OF WORK.

STAGE CURTAIN REFERENCE IMAGES



PROVIDE (N) STAGE CURTAINS PER SPECIFICATIONS. REF. BID ALTERNATE #11



PROVIDE (N) STAGE CURTAINS THROUGHOUT. REF. SPECIFICATIONS & BID ALTERNATE #11. WALL TO BE DEMOD PER AD1.4



RELOCATE (E) TRACK PER AS.4. WALL TO BE DEMOD PER AD1.4

CEILING PLAN LEGEND

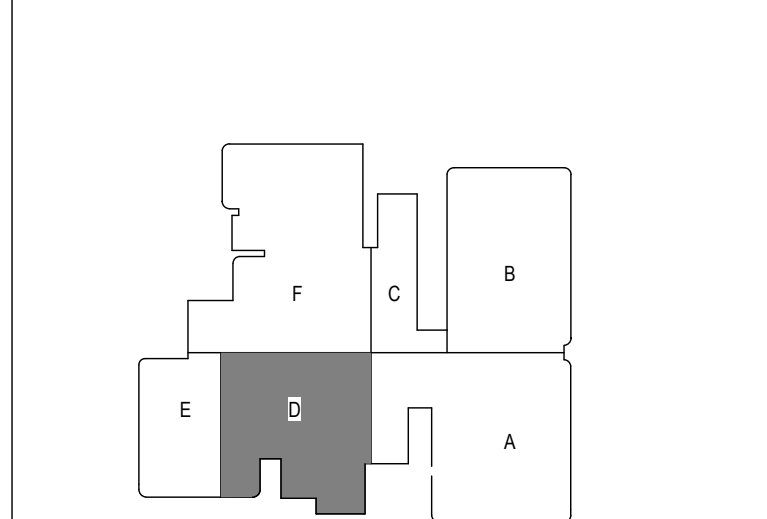
- [Symbol] EXPOSED DECKING - PAINTED
- [Symbol] NEW ACP (REFER TO SPECIFICATIONS)
ACP-1 2'X2' ACOUSTICAL CEILING PANEL
ACP-2 2'X4' ACOUSTICAL CEILING PANEL
ACP-3 2'X4' ANTIMICROBIAL CEILING PANEL
ACP-4 2'X4' BLACK CEILING PANEL
ACP-5 2'X2' HIGH NRC CEILING PANEL
ACP-6 2'X4' HIGH NRC CEILING PANEL
- [Symbol] EXISTING ACP TO REMAIN
- [Symbol] EXISTING CEILING GRID TO BE PAINTED AND RECEIVE NEW CEILING TILE PER KEYNOTES AND SPECIFICATIONS
- [Symbol] GWB - PAINTED GYP. BOARD CEILING

- [Symbol] EXISTING WALL OR PARTITION
- [Symbol] NEW WALL REFER TO WALL TYPE
- [Symbol] NEW FIRE RATED WALL REFER TO WALL TYPE
- [Symbol] NEW CONCRETE WALL. REFER TO STRUCT.

KEYNOTE LEGEND - CEILING PLAN

- 110 EXPANSION JOINT
- 116 FABRIC CURTAIN WITH CEILING TRACK. REFER TO SPECIFICATIONS.
- 126 SUSPENDED PIPE GRID. REFER TO SPECIFICATIONS AND SHEET A3.0 FOR DETAILS
- 130 PROJECTION SCREEN. REFER TO SPECIFICATIONS & INTERIOR ELEVATIONS
- 132 ROOF ACCESS LADDER. REFER TO SPECIFICATIONS
- 301 PAINT EXISTING SUSPENDED CEILING GRID WHITE. PROVIDE NEW ACOUSTICAL CEILING TILE PER SPECIFICATION
- 302 PAINT EXISTING CEILING GRID FLAT BLACK. CEILING GRID TO RECEIVE NEW ACOUSTICAL CEILING TILE (BLACK). REFER TO SPECIFICATIONS.
- 303 RATED CEILING ASSEMBLY. REFER TO DETAIL.
- 307 CEILING CLOUD EDGE TRIM. REFER TO SPECIFICATIONS
- 308 ACOUSTIC DIFFUSER PANEL
- 309 NEW ANGLD GYPSUM BOARD SOFFIT. MATCH ANGLE OF EXISTING ADJACENT SOFFIT. REFER TO DETAIL.
- 403 EXPANSION JOINT
- 408 ROOF ACCESS HATCH

KEY PLAN



REFLECTED CEILING PLAN - AREA D
PITTSBURG HIGH SCHOOL
PITTSBURG USD NO. 250

A3.4
12-1719-00

CGA
Construction Graphics Associates
1719 E. 44th St.
Pittsburgh, PA 15203
412.238.3134

DJR Group
Architecture Engineering Planning Interiors
© DJR Group Inc. a Kansas corporation. ALL RIGHTS RESERVED

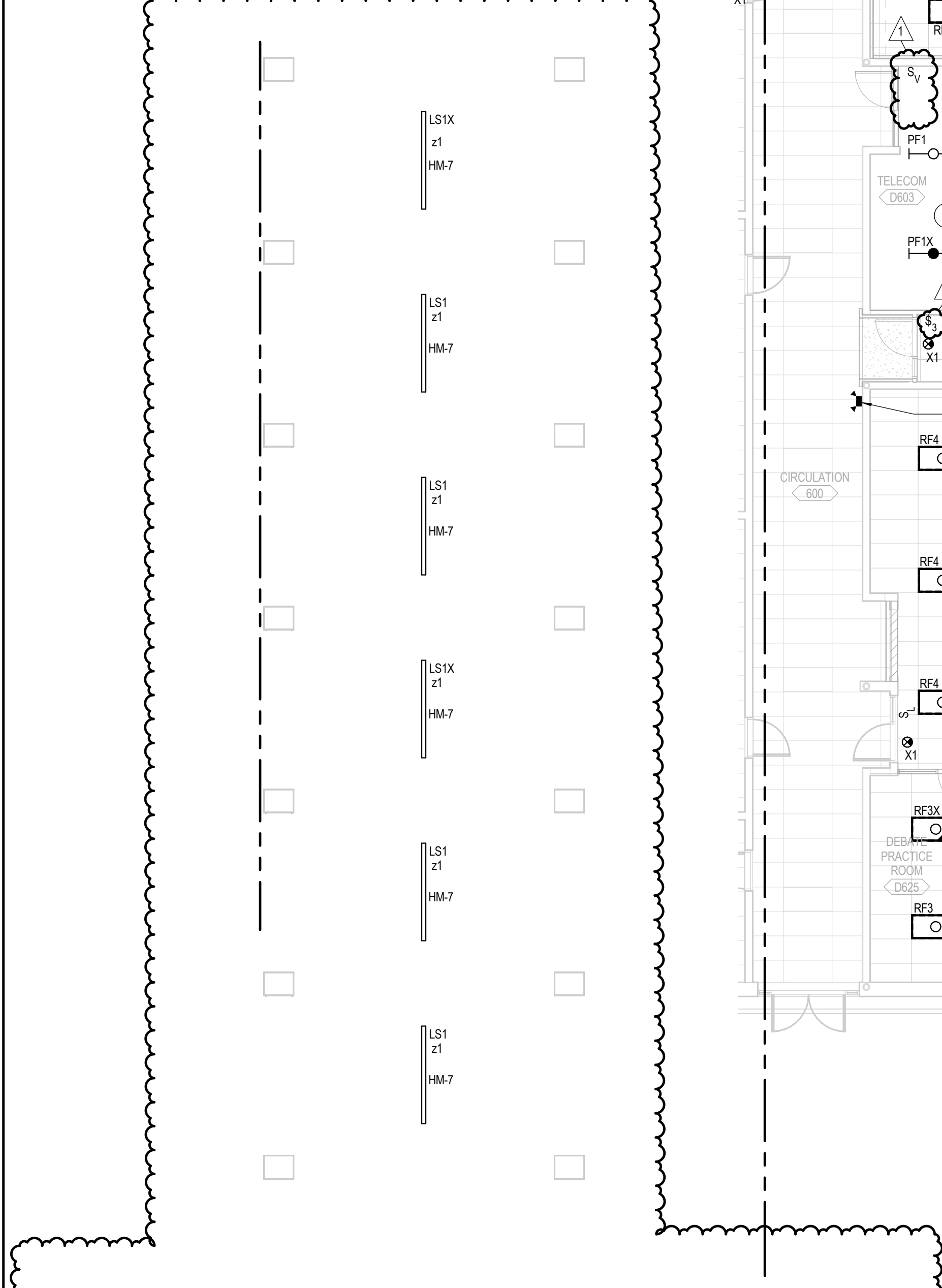


1879 E. 44TH ST.
PITTSBURG, KS 66762

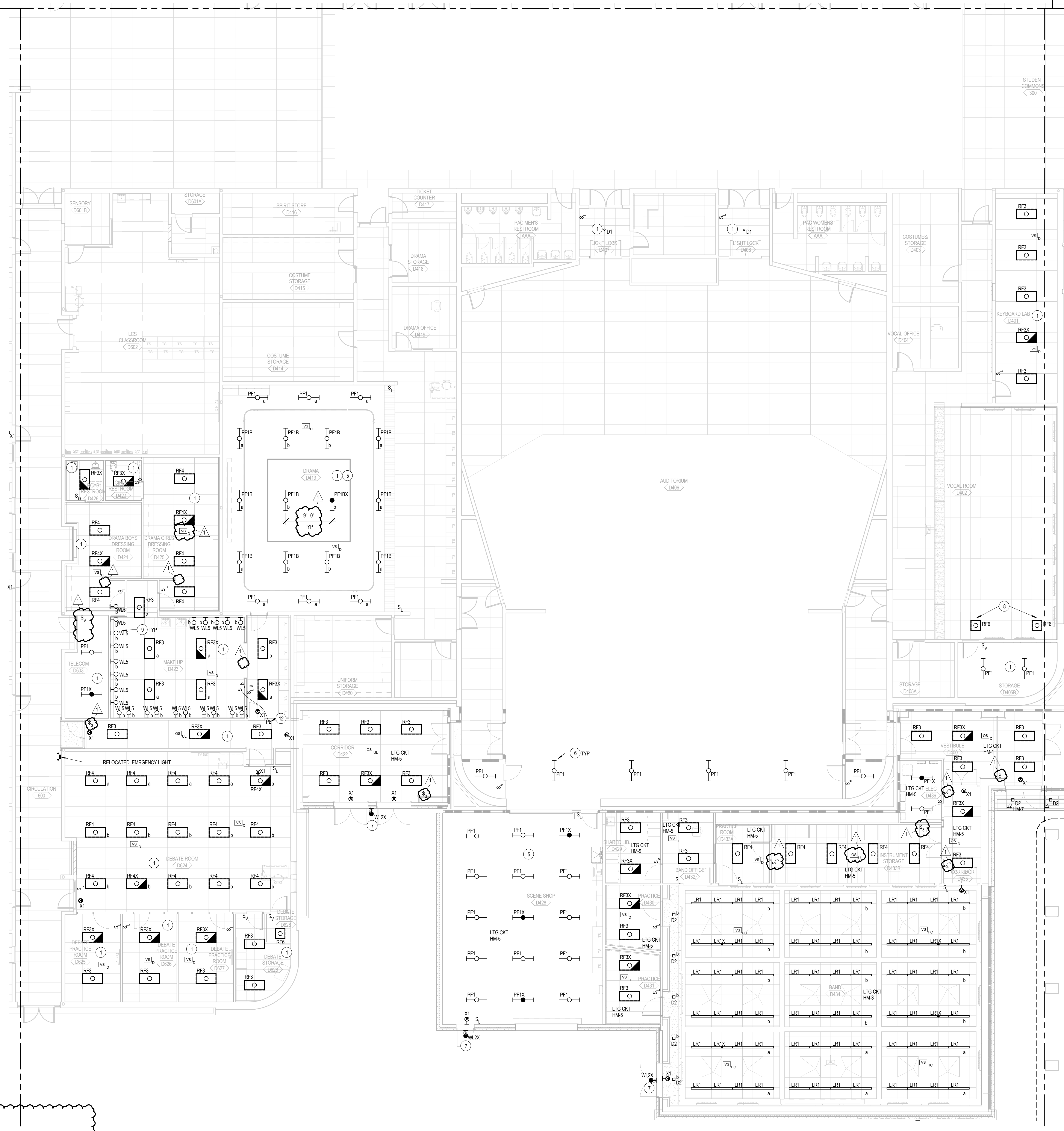
PLAN NORTH
TRUE NORTH

C:\Users\1217119\OneDrive\Desktop\2016_CENTRAL_lighting\PT34.rvt
3/2/2016 4:40:01 PM

LIGHTING PLAN, EXTERIOR - AREA A BREEZEWAY
NORTH SCALE: 1/8" = 1'-0"



LIGHTING PLAN, FIRST LEVEL - AREA D
NORTH SCALE: 1/8" = 1'-0"



LEGEND NOTES

LEGEND NOTES ARE COMMON TO ALL SHEETS. SOME NOTES MAY NOT APPLY TO THIS SHEET.

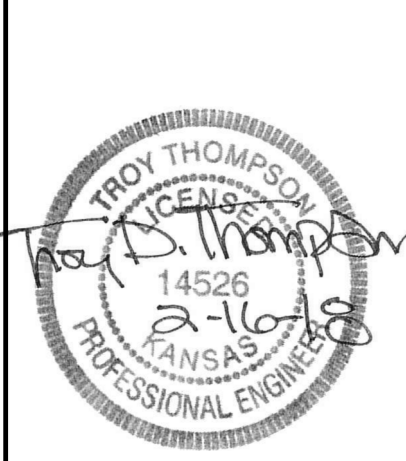
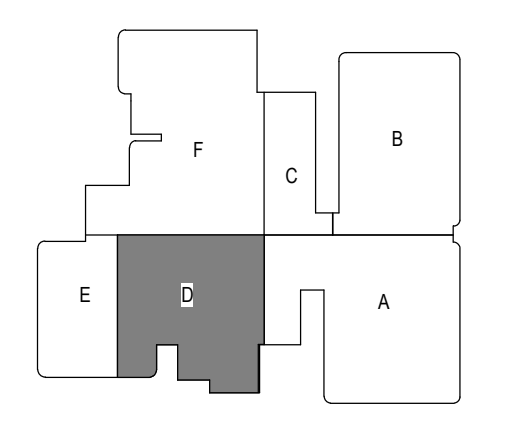
LIGHTING NOTES

- CONNECT TO EXISTING LIGHTING CIRCUIT FEEDING ROOM/AREA. RUN NEW WIRING FROM THE JUNCTION BOX FEEDING THE ROOM. EXISTING CONDUIT MAY BE REUSED IF IT MEETS SPECIFICATIONS.
- MODIFY EXISTING LIGHT FIXTURES IN EXISTING CEILING TO NEW LIGHT FIXTURE LAYOUT. CONNECT TO EXISTING LIGHTING CIRCUIT IN ROOM. PROVIDE NEW OCCUPANCY SENSOR AND LIGHTING CONTROLS AS INDICATED.
- PROVIDE SWITCH WITH PILOT LIGHT.
- INSTALL NEW CONTROLS (LOW VOLTAGE DIMMER AND VACANCY SENSOR) AS SHOWN WITH 2 ZONES OF LIGHT. ROW OF EXISTING FIXTURES CLOSEST TO TEACHING WALL SHALL BE ON ONE ZONE AND THE REST OF THE EXISTING FIXTURES ON ANOTHER ZONE. SEE SPECIFICATIONS FOR LIGHTING CONTROLS.
- MOUNT FIXTURES IN THIS ROOM AS HIGH AS POSSIBLE BUT LOWER THAN ANY PLUMBING OR DUCTWORK.
- CONNECT TO EXISTING LIGHTING CIRCUIT AND CONTROLS IN THIS AREA.
- SEE ARCHITECTURAL ELEVATIONS FOR MOUNTING HEIGHTS. ADJUST EXISTING LIGHTING CONTROL TO MATCH NEW ROOM LAYOUT.
- VANITY LIGHTS. MOUNT CENTERED BETWEEN AND ABOVE MIRRORS. SEE ARCHITECTURAL ELEVATIONS FOR MOUNTING LOCATIONS.
- UNDER ALTERNATE BID 2. ADD PROVISIONS TO ILLUMINATE THE POWER UP GRAPHIC ON EXTERIOR FACADE AS SHOWN. UNDER BASE BID. DELETE THESE PROVISIONS.
- SWITCH CONTROLS ALL DISPLAY CASE LIGHTING. SEE ARCHITECTURAL DETAILS FOR MOUNTING INSIDE CASE.
- PROVIDE PILOT LIGHT OUTSIDE OF ROOM INDICATING STATUS OF VANITY LIGHTS. LABEL "VANITY LIGHTS".

CONTRACTOR OPTION TO PROVIDE ONE EMERGENCY LIGHTING POWER SUPPLY FOR EACH EMERGENCY LIGHTING FIXTURE OR TO REDUCE SEVERAL UNITS INTO A FEW LARGER CAPACITY UNITS. ALL EMERGENCY POWER SUPPLIES SHALL BE FULLY CONTAINED WITHIN A METAL ENCLOSURE MOUNTED TO A WALL ABOVE THE ACCESSIBLE CEILING WITH A REMOTE TEST STATION/MONITORING DEVICE MOUNTED FLUSH IN CEILING TILE DIRECTLY BELOW.

REFER TO LOW VOLTAGE SWITCHES DETAIL FOR INFORMATION ON SINGLE AND TWO-ZONE SWITCHES.

KEY PLAN

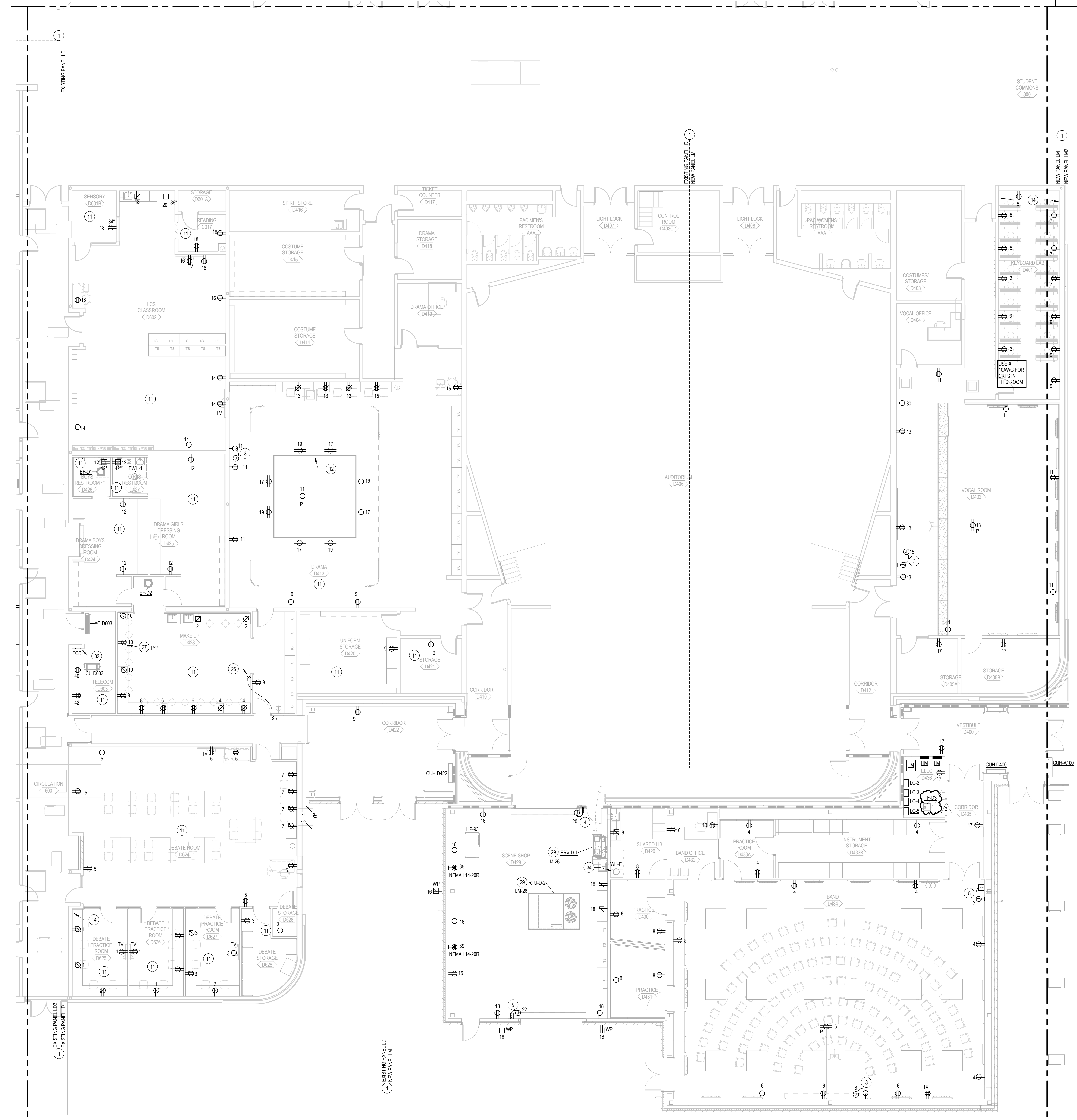


1976 E. 4TH ST.
PITTSBURG KS 66762

**LIGHTING PLAN - AREA D
PITTSBURG HIGH SCHOOL - BUILDING ADDITION
PITTSBURG USD NO. 250**

E1.4
12-17119-00
02/16/18
ARCHITECT

C:\Users\1217119\OneDrive\Desktop\2016_CENTRAL_jessie@PTTS4.rvt
3/20/16 2:49:37 PM

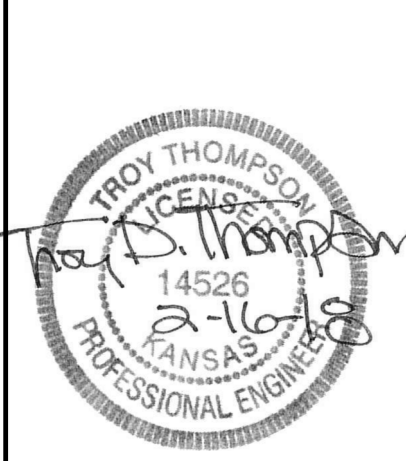


LEGEND NOTES

LEGEND NOTES ARE COMMON TO ALL SHEETS. SOME NOTES MAY NOT APPLY TO THIS SHEET.

ELECTRICAL NOTES

1. RECEPTACLES AND OTHER 120V OR 208V LOADS LOCATED WITHIN THE INDICATED BOUNDARIES SHALL BE CIRCUITED TO THE PANEL DESIGNATED FOR THAT AREA, UNLESS OTHERWISE NOTED.
2. CONNECT TO EXISTING RECEPTACLE CIRCUIT IN THIS ROOM.
3. CONTROLLER FOR POWERED PROJECTOR SCREEN. MAKE ALL REQUIRED CONNECTIONS FOR POWER AND CONTROLS.
4. COILING FIRE DOOR. MAKE ALL REQUIRED CONNECTIONS TO MOTOR, DOOR OPERATOR AND FIRE ALARM SYSTEM. SEE SPECIAL SYSTEMS PLAN FOR FURTHER DETAILS.
5. MOTORIZED SHADES. MAKE ALL REQUIRED CONNECTIONS TO MOTOR AND CONTROLLER. COORDINATE WITH MANUFACTURER.
6. POWER POLE. INSTALL WITH NUMBER OF RECEPTACLES AS INDICATED.
7. RETRACTABLE CORD REEL WITH TWO (2) DUPLEX RECEPTACLES (BACK-TO-BACK) AT END OF CORD IN A WHITE CAST ALUMINUM BOX. SEE DETAIL.
8. INSTALL POWER METER ON EXISTING MAIN ELECTRICAL SERVICE. SEE SPECIFICATIONS FOR DETAILS.
9. COILING DOOR. MAKE ALL REQUIRED CONNECTIONS FOR POWER AND CONTROL. COORDINATE EXACT REQUIREMENTS WITH MANUFACTURER.
10. DISHWASHER. PROVIDE CORD, PLUG AND GFI DUPLEX RECEPTACLE BELOW THE ADJACENT SINK. DRILL GROMMETS THROUGH CABINET PARTITIONS BELOW COUNTER THROUGH WHICH TO ROUTE CORD.
11. CIRCUIT NUMBERS INDICATED IN THIS AREA ARE TO SHOW WHAT IS CONNECTED TO EACH CIRCUIT NOT NECESSARILY THE EXACT CIRCUIT. CONTRACTOR TO VERIFY AVAILABLE EXISTING CIRCUITS FROM EXISTING PANEL WHICH ARE SPARES OR SPACES OR WHICH ARE AVAILABLE AFTER DECKLUTION.
12. PROVISIONS SHOWN FOR FUTURE LIGHT PIPE GRID ARE PRELIMINARY. PRIOR TO ROUGH-IN, COORDINATE DIRECTLY WITH OWNER TO DETERMINE DESIRED QUANTITIES, LOCATIONS, CONFIGURATION, AND LAYOUT.
13. MAKE REQUIRED CONNECTIONS TO FUME HOOD. COORDINATE REQUIREMENTS WITH MANUFACTURER. SEE EXHAUST FAN CONNECTIONS SCHEDULE FOR PROVISIONS REGARDING FAN CONTROL, AT HOOD.
14. INSTALL WIREMOLD AND RUN DOWN WALL IN LOCATION SHOWN AND THEN RUN HORIZONTALLY FOR THE RECEPTACLES LOCATED ON THE SAME WALL.
15. PUSHBUTTON (PUSH-TO-LOCK/RELEASE-TO-UNLOCK) TO ENERGIZE MAGNETIC DOOR LOCK. ALSO PROVIDE INTERFACE WITH FIRE ALARM CONTROL. MODULE TO OPEN CIRCUIT UPON GENERAL ALARM. COORDINATE WIRING REQUIREMENTS WITH HARDWARE CONTRACTOR.
16. MAKE ALL REQUIRED ELECTRICAL CONNECTIONS TO DOOR ASSIST SYSTEM, INCLUDING ROUGH-IN CONDUIT, 120V POWER, INSTALLATION AND WIRING OF PUSHBUTTON OPERATORS PER MANUFACTURER'S SPECIFICATIONS. COORDINATE WITH DOOR ASSIST CONTRACTOR.
17. MAKE ALL REQUIRED CONNECTIONS TO OWNER PROVIDED POWER POLES.
18. RUN POWER TO INSIDE CABINET. SEE ARCHITECTURAL ELEVATIONS FOR EXACT LOCATIONS AND DETAILS.
19. MICROWAVE RECEPTACLE INSIDE UPPER CABINET AS SHOWN ON ARCHITECTURAL DETAILS. COORDINATE EXACT LOCATION PRIOR TO ROUGH-IN.
20. ELECTRIC RANGE. PROVIDE CORD, PLUG & RECEPTACLE. NEMA 14-50R CONFIGURATION. 125/250V, 50A, 3-POLE, 4-WIRE GROUNDING. HUBBELL #R450A. MOUNT RECEPTACLE AT 6" AFF TO CENTER OF DEVICE AND ROTATED SO THE PLUG AND CORD ARE PARALLEL WITH THE FLOOR TO ALLOW PLUG TO BE INSERTED EASILY AND TO ALLOW RANGE TO BE PUSHED TIGHT AGAINST THE WALL. PRIOR TO ROUGH-IN, COORDINATE REQUIREMENTS WITH ACTUAL EQUIPMENT SUPPLIER.
21. PUSHBUTTON TO UNLOCK DOOR WITH-1. COORDINATE EXACT REQUIREMENTS WITH DOOR HARDWARE CONTRACTOR. TIE INTO ACCESS CONTROL.
22. ELECTRONIC ELAPSE TIMER SWITCH TO CONTROL SCIENCE ROOM EXHAUST FAN. SEE EXHAUST FANS CONNECTIONS SCHEDULE FOR REQUIREMENTS.
23. MOUNT RECEPTACLE ABOVE BACK OF SEAT. COORDINATE WITH MILLWORK.
24. UNDER BASE BID, MOVE USB POWER OUTLET TO WALL AT 18" AFF. UNDER ALTERNATE BID 9, INSTALL OUTLET IN FRONT BASE OF BENCH SEATING CASEWORK AS SHOWN.
25. COORDINATE WITH ARCHITECTURAL DRAWINGS.
26. UNDER ALTERNATE BID 7, DELETE RECEPTACLES TO ALLOW FOR FOLDING PANEL PARTITION BETWEEN CLASSROOMS 307 AND 308 IN LIEU OF STUD WALL.
27. SINGLE-POLE LIGHT SWITCH. CONTROLLING DRESSING ROOM RECEPTACLES. SEE ELECTRICAL DETAIL SHEET. PROVIDE LABEL INDICATING "VANITY RECEPTACLES" PROVIDE PILOT LIGHT OUTSIDE OF ROOM WITH LABEL.
28. MOUNT RECEPTACLES ABOVE COUNTER, BELOW LIGHTS.
29. GAS UTILITY SHUT-OFF CABINET. 120V CONNECTION. COORDINATE EXACT MOUNTING HEIGHT AND ROUGH-IN REQUIREMENTS WITH PLUMBING CONTRACTOR.
30. PROVIDE 120V CONNECTION FROM BRANCH CIRCUIT INDICATED TO CONVENIENCE RECEPTACLE AT ROOFTOP MECHANICAL UNIT.
31. EXISTING HEAT PUMP TO BE REMOVED TEMPORARILY AND LATER REINSTALLED AT A DIFFERENT LOCATION NEARBY. COORDINATE WITH MECHANICAL CONTRACTOR FOR EXACT REQUIREMENTS. TEMPORARILY REMOVE ELECTRICAL CONNECTIONS AND LATER RECONNECT AT NEW LOCATION. EXTEND AND/OR REPLACE EXISTING CIRCUITING AS NECESSARY. FIELD-VERIFY EXISTING CONDITIONS PRIOR TO BIDDING.
32. RECEPTACLE FOR CONNECTION TO UV GOOGLE CABINET. COORDINATE EXACT POSITION AND MOUNTING HEIGHT PRIOR TO ROUGH-IN.
33. SEE TELECOM ROOM GROUNDING DETAIL 10E6.2.
34. EXTEND NEAREST 120V RECEPTACLE CIRCUIT FOR ADJACENT ROOM TO ABOVE ACCESSIBLE CEILING AS SHOWN. RELOCATE EXISTING ELECTRICAL PROVISIONS AND MODIFY EXISTING FEEDER TO ACCOMMODATE NEW LOCATION. FIELD-VERIFY TO DETERMINE REQUIREMENTS PRIOR TO BIDDING.



1976 E. 4TH ST
PITTSBURG KS 66762

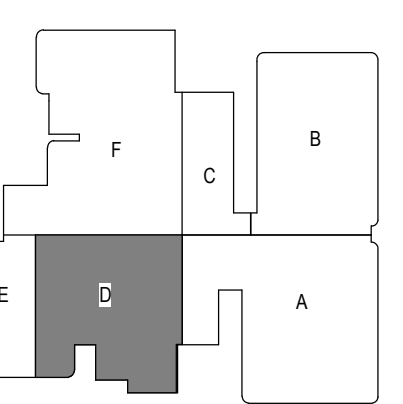
POWER PLAN - AREA D
PITTSBURG HIGH SCHOOL - BUILDING ADDITION
PITTSBURG USD NO. 250

E2.4
12-17119-00
02/16/18
1. AECOM/DF
1. AECOM/DF

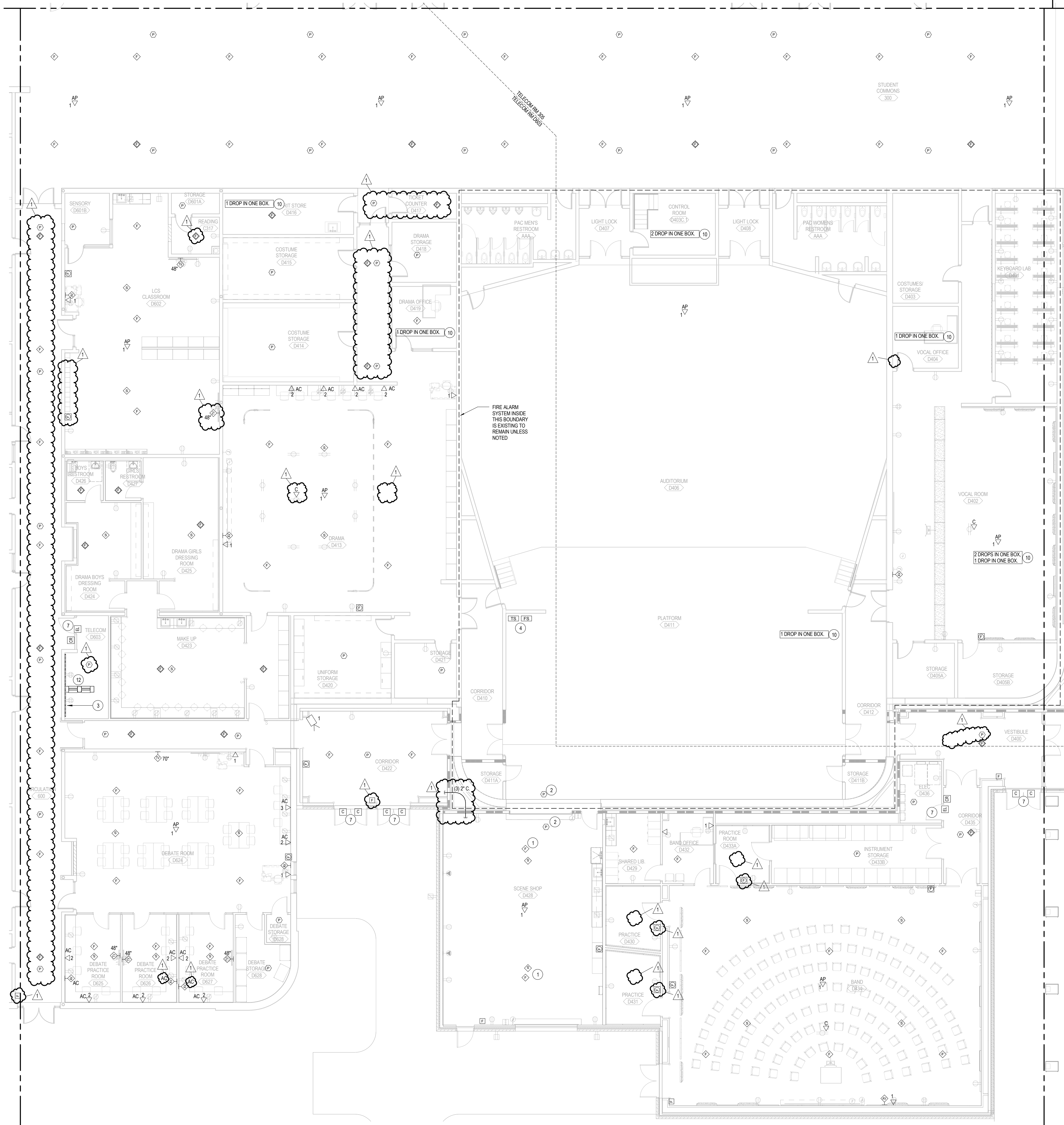
DLR Group
Architecture Engineering Planning Interiors
© 2018, DLR Group Inc. - a Kansas corporation. ALL RIGHTS RESERVED.

POWER PLAN, FIRST LEVEL - AREA D
SCALE: 1/8" = 1'-0"
NORTH

KEY PLAN



C:\Users\12-17119-00_MEP_2016_CENTRAL_jmestg\PTT34.rvt
3/2/2018 4:42:18 PM



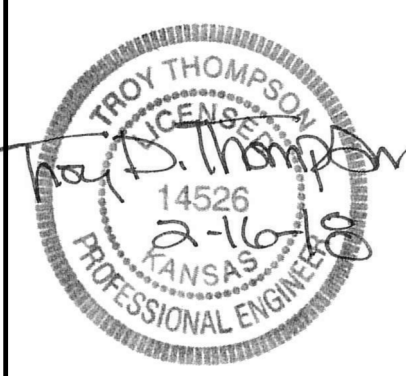
LEGEND NOTES

LEGEND NOTES ARE COMMON TO ALL SHEETS. SOME NOTES MAY NOT APPLY TO THIS SHEET.

SPECIAL SYSTEMS NOTES

1. PROVIDE BACK BOX FOR DEVICES LOCATED IN OPEN CEILING AREAS.
2. SMOKE DETECTOR DEDICATED TO CLOSE CEILING DOOR UPON ACTIVATION. TIE INTO FIRE ALARM SYSTEM.
3. FURNISH 8'-0" HIGH 3/4" TREATED FIRE-RETARDANT PLYWOOD PAINTED WITH (2) COATS GRAY ENAMEL. WIDTH SHALL BE AS SHOWN ON THE PLAN. PROVIDE SCREW FASTENERS AT 18" SPACING ALONG THE PERIMETER OF EACH PLYWOOD SHEET.
4. REFER TO FIRE PROTECTION DRAWINGS FOR QUANTITIES AND LOCATIONS OF TAMPER SWITCHES AND FLOW SWITCHES. PROVIDE INTERFACE TO FIRE ALARM SYSTEM IN ACCORDANCE WITH THE OPERATIONS MATRIX AND SPECIFICATIONS.
5. PROVIDE INTERFACE TO FIRE ALARM SYSTEM IN ACCORDANCE WITH THE OPERATIONS MATRIX AND SPECIFICATIONS.
6. INSTALL I.T. OUTLET IN POWERDATA POLE. SEE POWER PLAN.
7. FIRE PROTECTION SPRINKLER EXTERIOR NOTIFICATION APPLIANCE. COORDINATE WITH DIVISION 21 FIRE PROTECTION CONTRACTOR.
8. MAKE ALL REQUIRED CONNECTIONS FOR DOOR HARDWARE. SEE DETAIL SHEET. COORDINATE EXACT REQUIREMENTS WITH DOOR HARDWARE CONTRACTOR.
9. UNDER BASE BID, MOVE AV OUTLET TO WALL AT 18" AFF. UNDER ALTERNATE BID, INSTALL AV OUTLET IN FRONT BASE OF BENCH SEATING CASEWORK AS SHOWN. COORDINATE WITH ARCHITECTURAL DRAWINGS.
10. INSTALL FLUSH DOUBLE-GANG J-BOX AT 18" AFF WITH STAINLESS STEEL COVERPLATE TO SERVE AS PULL BOX FOR CABLING FROM CASHIER COMPUTER FLOOR BOXES. ROUTE (3) 3/4" CONDUITS, ONE FROM EACH FLOOR BOX, TO PULL BOX UP WALL AND STUBBED OUT ABOVE THE ACCESSIBLE CEILING.
11. PROVIDE QUANTITY OF TELECOM DROPS AND BOXES AS INDICATED. CABLE TO TELECOM ROOM PER AREA-BOUNDARY LINES. UTILIZE EXISTING BACKBOXES AND CONDUITS IF POSSIBLE AND SPECIFICATIONS ARE MET. COORDINATE EXACT LOCATION OF DROPS WITH OWNER. SEE DETAILS FOR BOX REQUIREMENTS.
12. EXISTING TECHNOLOGY EQUIPMENT TO REMAIN.
13. RELOCATED TECHNOLOGY EQUIPMENT.
14. RUN 1" CONDUIT UNDERGROUND FROM POS TO OFFICE C307 FOR TECHNOLOGY CABLING.
15. INSTALL OWNER-PROVIDED POWERDATA POLE. INSTALL I.T. OUTLETS, CABLING, AND CONNECTORS IN POLE.
16. RELOCATE EXISTING INTERCOM MASTER STATION TO NEW RECEPTION DESK.

FIRE ALARM SYSTEM NOTE
PROVIDE A COMPLETELY NEW FIRE ALARM / EMERGENCY COMMUNICATIONS SYSTEM (WITH VOICE NOTIFICATION THROUGHOUT). CONTRACTOR HAS THE OPTION TO REUSE THE EXISTING ALARM INITIATING DEVICES AND VISUAL NOTIFICATION APPLIANCES (STROBES) IF THEY ARE FULLY COMPATIBLE WITH THE NEW SYSTEM AND MEET THE REQUIREMENTS OF THE CONTRACT SPECIFICATIONS AND CODES. SEE SECTION 283111 FOR ADDITIONAL INFORMATION.

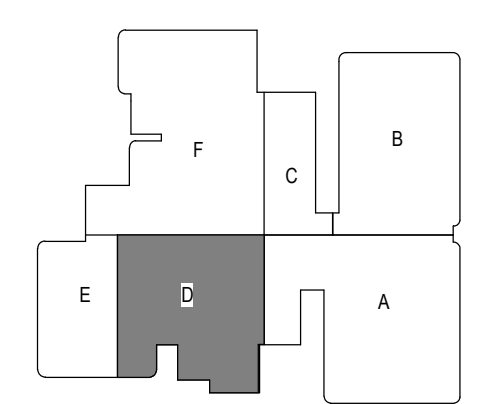


1976 E. 4TH ST
PITTSBURG KS 66762

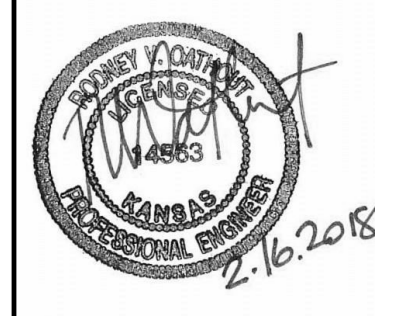
**SPECIAL SYSTEMS PLAN - AREA D
PITTSBURG HIGH SCHOOL - BUILDING ADDITION
PITTSBURG USD NO. 250**

E3.4
12-17119-00
02/16/18
ARCHITECT

KEY PLAN



SPECIAL SYSTEMS PLAN, FIRST LEVEL - AREA D
SCALE: 1/8" = 1'-0"
NORTH



LEGEND NOTES

LEGEND NOTES ARE COMMON TO ALL SHEETS. SOME NOTES MAY NOT APPLY TO THIS SHEET.

MECHANICAL KEYNOTES

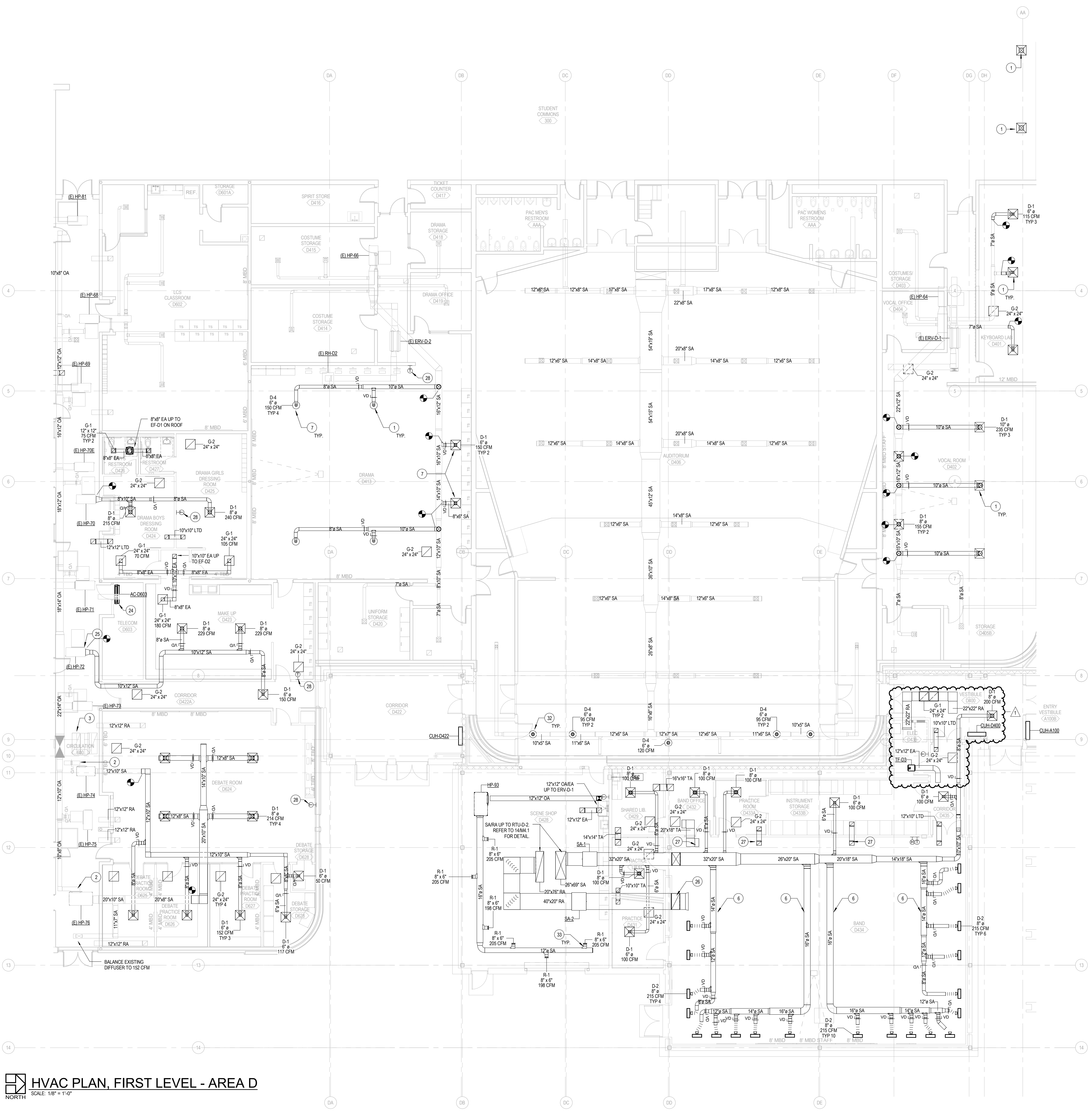
- REPLACE EXISTING DIFFUSERS WITH NEW D-1 DIFFUSERS. TIE INTO EXISTING DUCTWORK & REBALANCE TO EXISTING CFM.
- REBALANCE OUTSIDE AIR CFM TO VALUE LISTED PER HEAT PUMP SCHEDULE.
- REBALANCE DOAS FAN SETTINGS TO MATCH NEW VENTILATION REQUIREMENTS PER HEAT PUMP SCHEDULE.
- INSTALL ACCURATE RESIDENTIAL FIRE READY HOOD (DOORS) FOR RANGE. REFER TO RAMP FOR DETAIL.
- ROUTE DUCTWORK THROUGH JUST OPENINGS. REFER TO STRUCTURAL DRAWINGS AND 2006.2 FOR DETAIL.
- NEW DRAMA DIFFUSERS TO MATCH NEW CEILING GRID COLOR (BLACK). COORDINATE FINISH COLOR WITH ARCHITECT.
- PROVIDE ANGLE & 10' RESTRAINT FIRE SUPPRESSION SYSTEM IN ADDITION TO GREASE HOOD. SEE MANUFACTURER RECOMMENDATIONS FOR INSTALLATION.
- ROUTE 1/2" GREASE DUCT UP TO EXHAUST FAN ON ROOF AND PROVIDE 4" FIRE WRAP INSULATION. REFER TO 2006.1 FOR ROOF PENETRATION DETAIL.
- UNIT NOT IN CONTRACT. HEAT PUMP TO BE PROVIDED BY TRANE COMPANY.
- 6" EA UP TO EXISTING EXHAUST FAN ON ROOF.
- 6" EA UP TO EF-E1 ON ROOF.
- 6" EA UP TO EF-A2 ON ROOF.
- INSTALL DRYER EXHAUST UP THROUGH ROOF. DRYER PROVIDED BY OTHERS.
- 10" EA UP TO EF-C1.
- UTILIZE EXISTING TRANSFER DUCT FOR RETURN AIR PATH. PROVIDE NEW TRANSFER DUCT IF NECESSARY.
- OWNER TO PURCHASE UNITS THROUGH FRAME SEPARATELY. CONTRACTOR RESPONSIBLE FOR INSTALLATION OF EQUIPMENT PER PLANS AND DETAILS.
- REMOVE EXISTING RETURN GRILLE AND REPLACE WITH NEW RETURN GRILLE PER PLANS. EXISTING TRANSFER DUCT TO CORRIDOR TO REMAIN.
- UTILIZE EXISTING H.L.O. EXHAUST AND CONTROLS IN SCIENCE ROOMS. PROVIDE VOLUME DAMPER IN DROP.
- CONTRACTOR TO FIELD VERIFY EXISTING CORRIDOR WALL DOES NOT GO UP TO DECK. IF WALL DOES GO UP TO DECK, PROVIDE TRANSFER AIR PATH.
- WATER HEATER COMBUSTION AIRVENT UP THRU ROOF. MOUNT BOTTOM OF AC UNIT AT 8" ABOVE FINISHED FLOOR TO ALLOW CONDENSATE TO DRAIN BY GRAVITY. SEE P1.2 FOR CONCRETE PIPING.
- ADJUST EXISTING HP LOCATION TO ACCOMMODATE A TRANSITION AND AN ELBOW. DO NOT DUCT THROUGH TELECOM SPACE.
- ROUTE RETURN DUCTWORK UP IN SOFFIT SPACE. TERMINATE WITH BELLMOUTH IN THE CLOUD SPACE IN BAND ROOM.
- ROUTE TRANSFER AIR IN CLOUD SPACE.
- REINSTALL EXISTING THERMOSTAT TO LOCATION SHOWN.
- REINSTALL EXISTING HEAT PUMP TO LOCATION SHOWN.
- COORDINATE WALL OPENINGS WITH STRUCTURAL. PRIOR TO INSTALLATION. REFER TO 1100.1 FOR SHELTER WALL PENETRATION DETAIL.
- COORDINATE ROOF PENETRATIONS WITH DOUBLE TEE ROOF STRUCTURE. PRIOR TO INSTALLATION. REFER TO 1100.1 FOR SHELTER ROOF PENETRATION DETAIL.
- MOUNT DIFFUSERS AT TYPICAL HEIGHT OF OTHER DIFFUSERS IN SPACE. PROVIDE VOLUME DAMPER.
- ANGLE DIFFUSER DOWNWARD AT 45 DEGREE ANGLE.
- COORDINATE WALL OPENINGS WITH STRUCTURAL PRIOR TO INSTALLATION.

1975 E. 47TH ST.
PITTSBURG, MO 65676

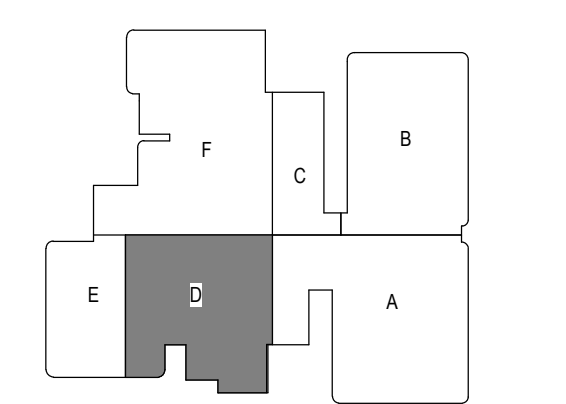
HVAC PLAN, FIRST LEVEL - AREA D PITTSBURG HIGH SCHOOL - BUILDING ADDITION PITTSBURG USD NO. 250

M1.4
12-17-19-00
02/16/18
Revision
Approved
Accomplished

DLR Group
Architecture Engineering Planning Interiors
© 2018, DLR Group, Inc. All Rights Reserved.



KEY PLAN



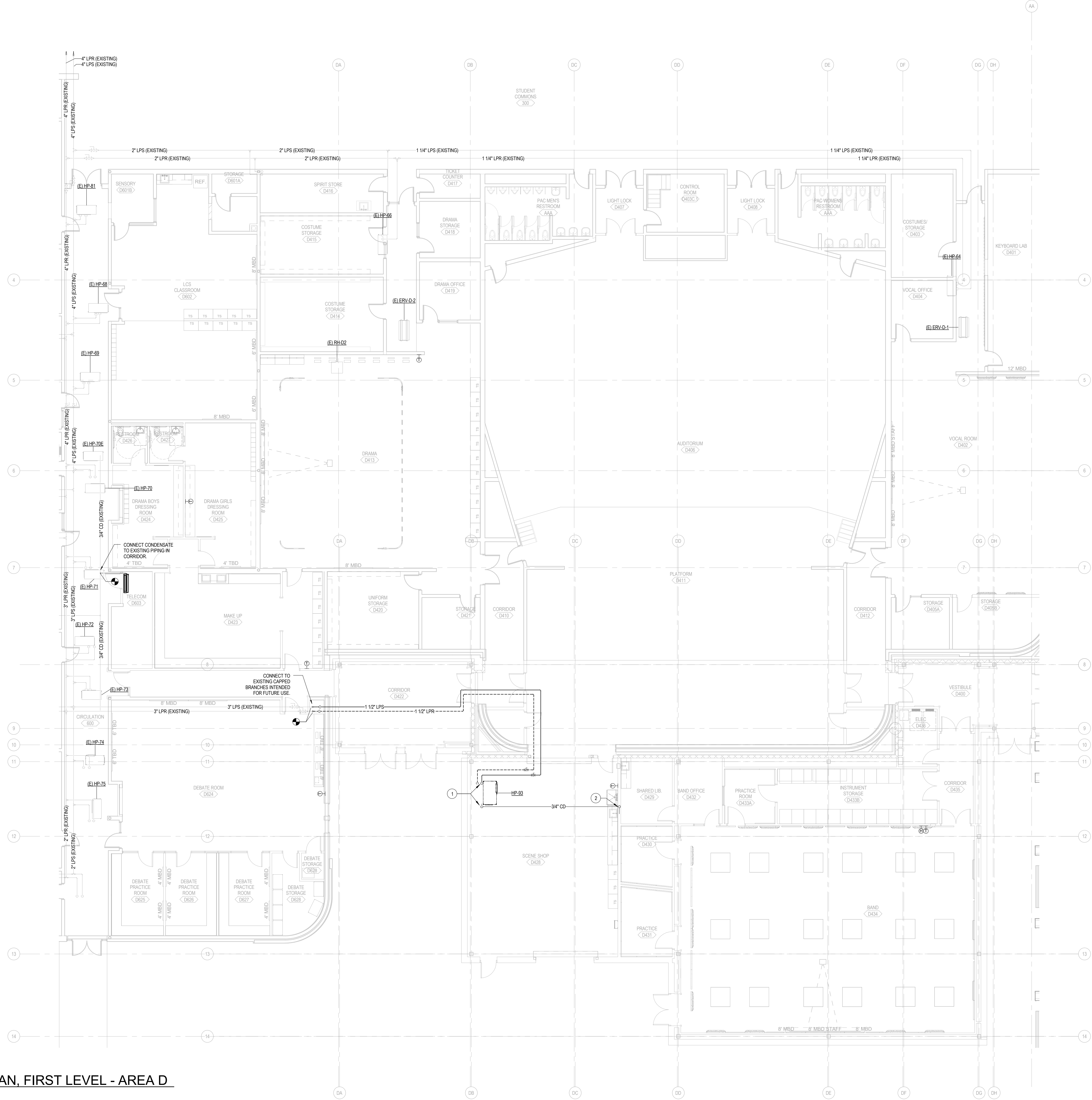
HVAC PLAN, FIRST LEVEL - AREA D
SCALE: 1/8" = 1'-0"

C:\Revit\2-17-19-00_MEP_2016_CENTRAL_ames.nc
3/2/2018 8:48:18 PM

C:\Revit\2-17-19-00_MEP_2016_CENTRAL_annotated.rvt
2/20/2018 4:27:47 PM

PIPING PLAN, FIRST LEVEL - AREA D

SCALE: 1/8" = 1'-0"



LEGEND NOTES

LEGEND NOTES ARE COMMON TO ALL SHEETS. SOME NOTES MAY NOT APPLY TO THIS SHEET.

MECHANICAL PIPING KEYNOTES

- PIPELINE CONNECTIONS TO HEAT PUMP WILL BE THE TRANE COMPANY. COORDINATE INSTALLATION WITH THE TRANE COMPANY.
- REFER TO 1205.1 FOR AIR BREAK FITTING DETAIL.
- RELOCATED HEAT PUMP (EXISTING). TIE INTO EXISTING HYDRONIC LOOP AND CONDENSATE PIPING AS SHOWN.
- RELOCATED HEAT PUMP (EXISTING). PROVIDE NEW BRANCH PIPING TO ACCOMMODATE FLOW. TIE INTO CONDENSATE PIPING AS SHOWN.
- INSTALL NEW PIPING AS SHOWN ON PLAN. RELOCATE ZONE SHUT OFF VALVES TO ACCOMMODATE NEW PIPING BRANCH.



1975 E. 4TH ST.
PITTSBURG, KS 66762

PIPING PLAN, FIRST LEVEL - AREA D

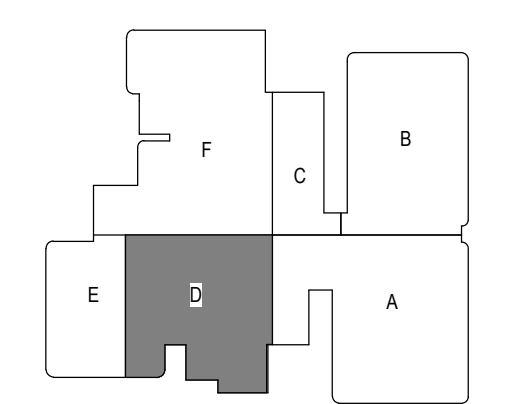
PITTSBURG HIGH SCHOOL - BUILDING ADDITION

PITTSBURG USD NO. 250

M2.4
12-17-19-00
ISSUE FOR BID
Revisions

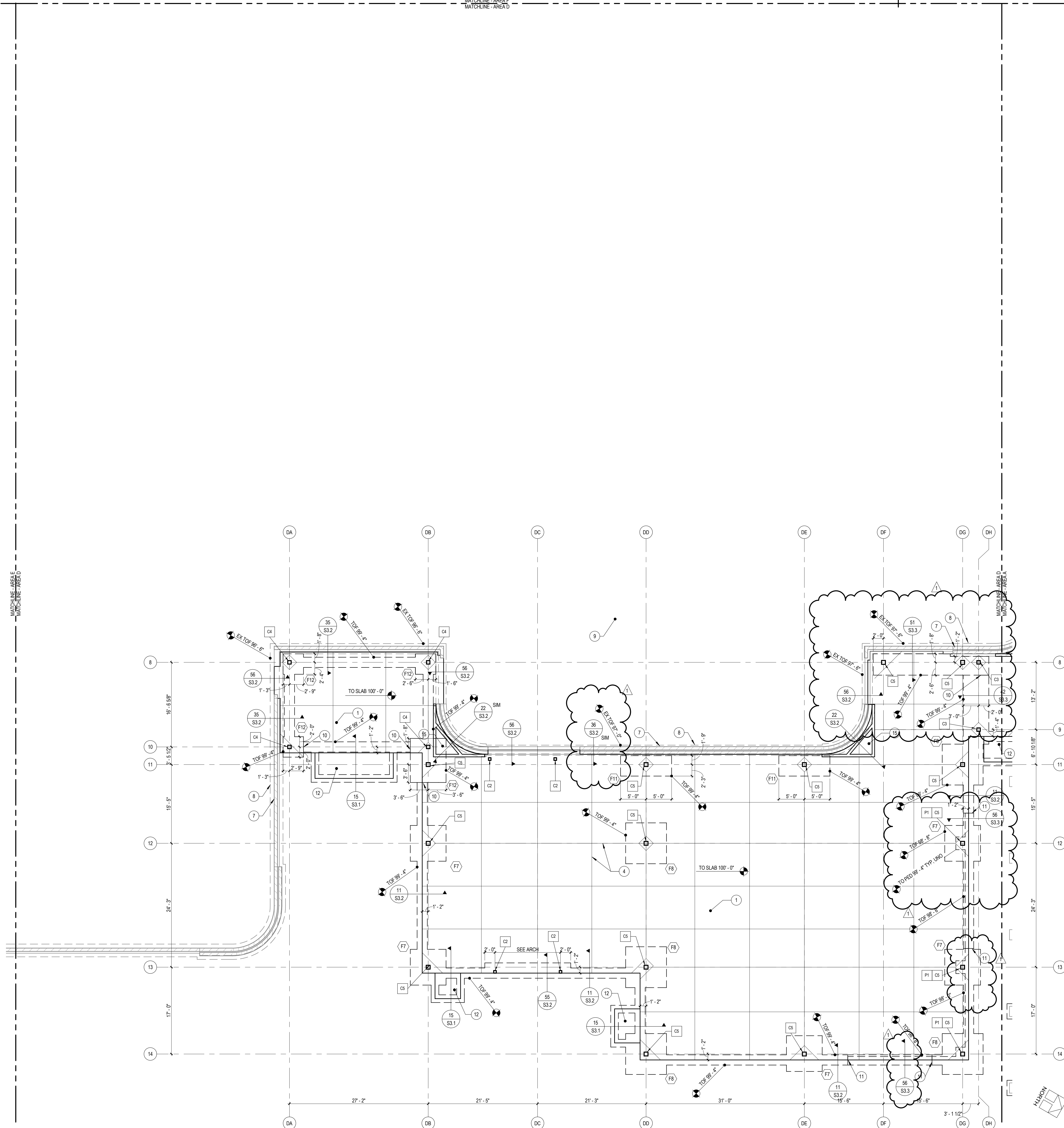
DLR Group
Architecture Engineering Planning Interiors
© 2018, DLR Group Inc. A Kansas corporation. ALL RIGHTS RESERVED.

KEY PLAN



C:\Revit\2016\1719-00_ST_2016_CENTRAL_mzd\1719-00.dwg
3/2/2016 2:39:08 PM

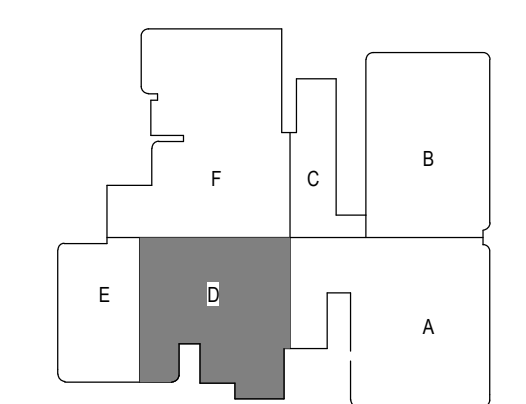
MATCHLINE - AREA F
MATCHLINE - AREA D



FOUNDATION NOTES

1. FINISHED FLOOR ELEVATION VARIES PER PLAN, 100'-0" EQUAL TO SURVEY ELEVATION = 824.67'-4" (F.V.)
2. SEE ARCHITECTURAL DRAWINGS FOR LOCATION OF SLOPED, RAISED AND DERESSED SLABS AND DRAINS.
3. REFER TO GENERAL NOTES SHEET S0.1 AND S0.2 FOR GENERAL NOTES, ABBREVIATIONS AND SYMBOLS.
4. REFER TO SPECIFICATIONS FOR ALL SUBGRADE PREPARATION REQUIREMENTS.
5. REFER TO ARCHITECTURAL DRAWINGS FOR OVERALL BUILDING GEOMETRY, PARTITION WALL LOCATIONS AND REQUIREMENTS.
6. COORDINATE ALL PENETRATIONS THROUGH FOUNDATIONS WITH MECHANICAL DRAWINGS. REFER TO TYPICAL FOUNDATION DETAILS FOR SLEEVE INFORMATION.
7. ALL EXTERIOR EXPOSED STEEL AND STEEL IN UNCONDITIONED SPACE SHALL BE GALVANIZED.
8. COORDINATE SLAB-ON-GRADE EDGE DIMENSIONS AT STOREFRONT LOCATIONS WITH ARCHITECTURAL DETAILS.
9. SHADED REGION DENOTES LOCATION OF HARDENED AREA. REFER TO S0.4 FOR STRUCTURAL CRITERIA AND ADDITIONAL INFORMATION.

KEY PLAN



FOUNDATION PLAN - AREA D
SCALE: 1/8" = 1'-0"

LEGEND NOTES

- LEGEND NOTES ARE COMMON TO ALL FOUNDATION PLANS. SOME NOTES MAY NOT APPLY TO THIS SHEET.
1. 4" NORMAL WEIGHT CONCRETE SLAB-ON-GRADE ON 15 MIL VAPOR BARRIER ON 4" GRANULAR FILL. REINFORCE WITH 6#6 V2.1W2.1 WELDED WIRE REINFORCEMENT. SEE 21S3.1.
 2. 4" NORMAL WEIGHT CONCRETE SLAB ON 15 MIL VAPOR BARRIER ON 4" GRANULAR FILL ON EXTRUDED POLYSTYRENE FOAM. REINFORCE SLAB WITH 6#6 V2.1W2.1 WELDED WIRE REINFORCEMENT.
 3. 10" PRECAST CONCRETE WALL PANELS.
 4. CONTROL OR CONSTRUCTION JOINT. SEE 23S3.1.
 5. RECESSED SLAB. SEE 25S3.1.
 6. RECESSED SLAB FOR WALK-IN FREEZER. SEE 26S3.1. COORDINATE FREEZER LOCATION AND DIMENSIONS WITH EQUIPMENT SUPPLIER.
 7. EXISTING MASONRY WALL.
 8. EXISTING FOUNDATION WALL AND FOOTING.
 9. EXISTING CONCRETE SLAB-ON-GRADE. NOT ALL EXISTING INTERIOR FOUNDATIONS ARE SHOWN.
 10. STEP BOTTOM OF FOOTING TO MATCH EXISTING BOTTOM OF FOOTING ELEVATION. SEE 43S3.1.
 11. FOOTING STEP. SEE 42S3.1.
 12. 6" CONCRETE STOOP SLAB ON GRANULAR FILL. REINFORCE WITH #5 AT 1'-0" OC EACH WAY.
 13. EXISTING COLUMN AND FOOTING.
 14. EXISTING CANOPY COLUMN AND FOOTING. SEE ARCH SHEET A5.2 FOR LOCATIONS.
 15. 8" THICKENED SLAB. REINFORCE PER 22S3.2.
 16. 20" THICK PRECAST CONCRETE COLUMNS. FULL HEIGHT SUPPORTING 20" WIDE PRECAST BEAMS. CONNECT BEAMS TO COLUMNS AND COLUMNS TO FOUNDATIONS WITH MOMENT RESISTING CONNECTIONS TO CREATE LATERAL LOAD RESISTING MOMENT FRAME. BEAM DEPTH AND CONNECTIONS PER PRECAST SUPPLIER. PRECAST BEAMS SUPPORT 20" THICK PRECAST WALL PANELS TO ROOF.
 17. REMOVE & REPLACE EXISTING STOOP SLAB.

FOUNDATION PLAN - AREA D
PITTSBURG HIGH SCHOOL
PITTSBURG USD NO. 250

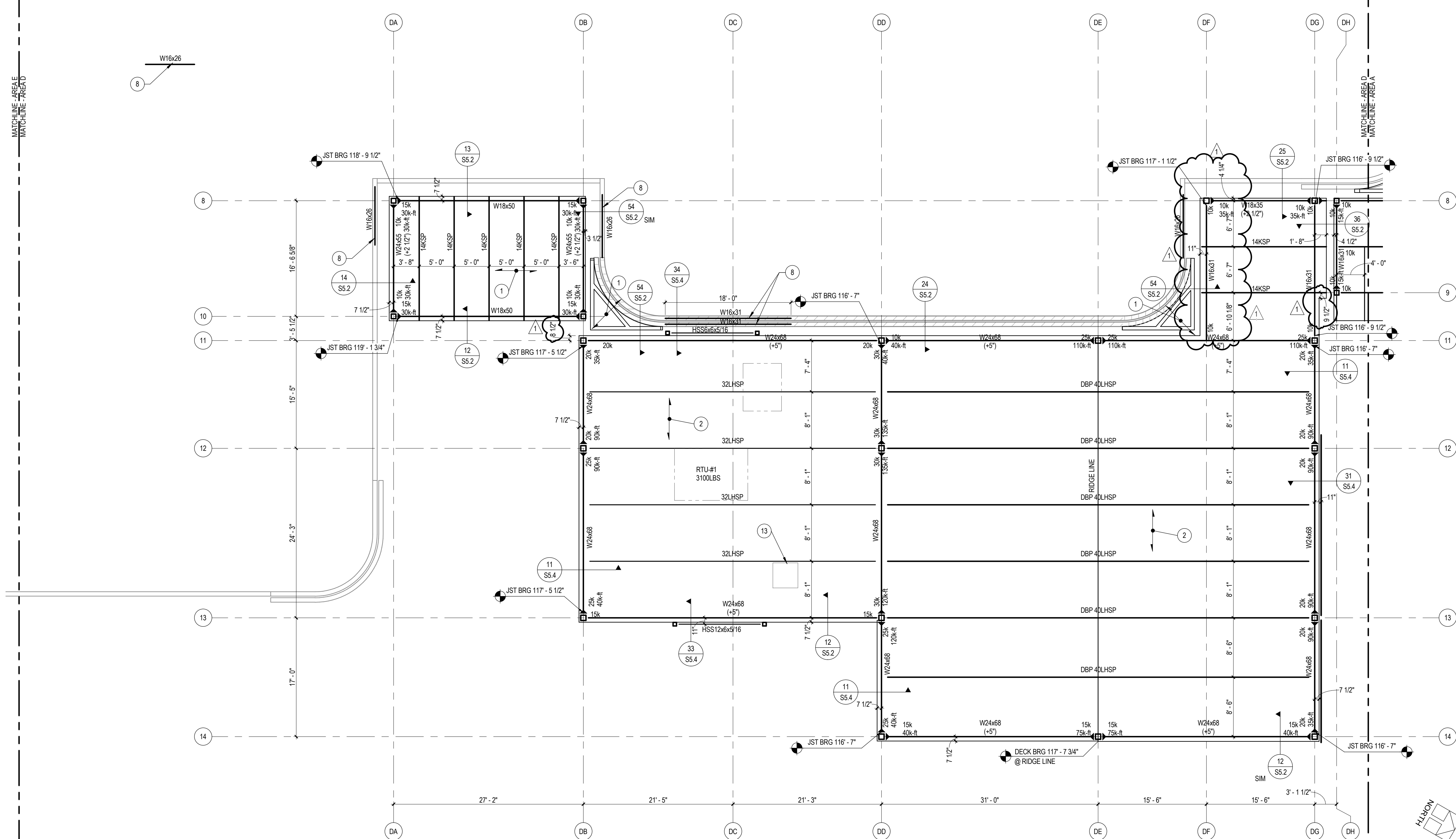
S1.4
12-17-19-00
Reason:
Addendum

CGA
CENTRAL GROUP ARCHITECTURE PLANNING INTERIORS
Center, Gable & Associates
714 West 10th Street
Pittsburg, KS 64571
6417.206.3134 6417.206.3137

DLR Group
Architecture Engineering Planning Interiors
© 2016, DLR Group, Inc. All Rights Reserved. All Rights Reserved.

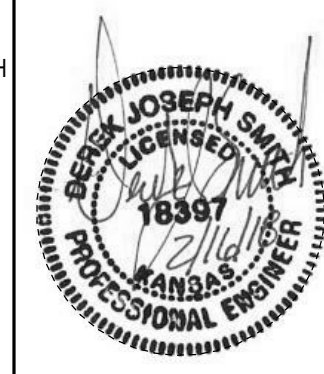


MATCHLINE - AREA F
MATCHLINE - AREA C



LEGEND NOTES

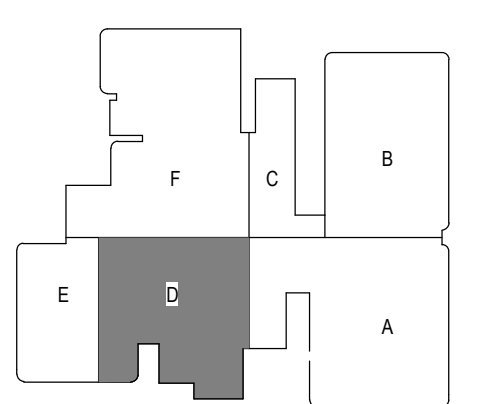
- LEGEND NOTES ARE COMMON TO ALL FRAMING PLANS.
SOME NOTES MAY NOT APPLY TO THIS SHEET.
- 1-1/2" DEEP 20 GAGE WIDE RIB PAINTED STEEL ROOF DECK. ATTACH TO FRAMING WITH 5/8"x3 PUDDLE WELDS IN A 3x5 PATTERN AND 3 #10 TEK SCREW SIDE LAPS PER SPAN. ALLOWABLE DIAPHRAGM SHEAR = 489 PLF
 - 2" DEEP x 20 GA. ACOUSTICAL DOVETAIL STEEL ROOF DECK. PROVIDE 1/2" (EFFECTIVE) ARC SPOT WELDS IN A 2x4 PATTERN AND 1 1/2" LONG ARC SEAM WELD SIDE LAP CONNECTIONS @ 18" OC. ALLOWABLE DIAPHRAGM SHEAR = 489 PLF
 - 4" (TOTAL THICKNESS) PRECAST CONCRETE PRETOPPED DOUBLE TEES WITH 4" MIN FLANGE THICKNESS. REINFORCE FLANGE WITH #4 @ 12" OC EA WAY MIN.
 - 10" PRECAST CONCRETE SOLID FLAT SLAB PLANK
 - EXISTING STEEL ROOF DECK
 - 1-1/2" DEEP 20 GAGE WIDE RIB GALVANIZED STEEL ROOF DECK. ATTACH TO FRAMING WITH #10 TEK SCREWS IN A 3x5 PATTERN AND 3 #10 TEK SCREW SIDE LAPS PER SPAN. ALLOWABLE DIAPHRAGM SHEAR = 489 PLF
 - COLD-FORMED METAL FRAMING @ 4" OC UNO
 - STEEL LINTEL IN EXISTING MASONRY WALL. SEE 414S.1.
 - EXISTING 3" TYPE N 18 GA STEEL ROOF DECK
 - HSS2-12x2-1/2x5/16 @ 5'-0" OC
 - HSS2-12x2-1/2x5/16
 - HSS6x6x1/4
 - ROOF HATCH. RE: ARCH
 - EXISTING H ROOF JOISTS @ 6'-6" OC (F.V.)
 - 3" TYPE N 18GA STEEL ROOF DECK, REF 14SS.4 FOR ATTACHMENT DETAILS



ROOF FRAMING NOTES

1. TOP OF STEEL ELEVATION AS SHOWN ON PLANS. TOP OF STEEL NOT SPECIFICALLY NOTED ON THE PLANS SHALL BE LINEARLY INTERPOLATED FROM TOP OF STEEL NOTED ON THE PLANS.
2. SEE SHEET SS.1 FOR TYPICAL DETAILS AND ADDITIONAL FRAMING INFORMATION.
3. JOSTI SUPPLIER TO COORDINATE MECHANICAL EQUIPMENT WEIGHTS AND LOCATIONS WITH MECHANICAL SUBCONTRACTOR.
4. REFER TO GENERAL NOTES SHEETS S0.1 AND S0.2 FOR GENERAL NOTES, ABBREVIATIONS AND SYMBOLS.
5. REFER TO ARCHITECTURAL DRAWINGS FOR OVERALL BUILDING GEOMETRY, WALL LOCATIONS AND PARTITION WALL REQUIREMENTS.
6. ALL HSS MEMBERS SHALL HAVE 1/4" CAP PLATES AT EACH END.
7. ALL EXTERIOR EXPOSED STEEL AND STEEL IN UNCONDITIONED SPACE SHALL BE GALVANIZED.
8. COORDINATE ALL ROOF DECK OPENINGS AND PENETRATIONS WITH MECHANICAL DRAWINGS. REINFORCE ROOF DECK PER TYPICAL DETAIL 44SS.1.
9. SHADED REGION INDICATES LOCATION OF HARDENED AREA. REFER TO SHEET S0.4 FOR ADDITIONAL INFORMATION.

KEY PLAN



ROOF FRAMING PLAN - AREA D
SCALE: 1/8" = 1'-0"

ROOF FRAMING PLAN - AREA D
PITTSBURG HIGH SCHOOL
PITTSBURG USD NO. 250

S2.4
12-17-19-00
Revision
ADJ

CGA
CENTRAL GROUP ASSOCIATES
PITTSBURG, KS
1718 W. GARDNER ST.
PITTSBURG, KS 66702
6417.206.3134 417.206.3137

DLR Group
Architecture Engineering Planning Interiors
© 2016, DLR Group, Inc. All Rights Reserved. All Rights Reserved.