

- FIRE ALARM EXISTING DEVICE LEGEND AND NOTES:**
- Ⓜ (S) (FS) DENOTES EXISTING FIRE ALARM SYSTEM INITIATING DEVICE OR OTHER FIRE ALARM SYSTEM DEVICE TO REMAIN, MAINTAIN EXISTING WIRING AS REQUIRED TO MAINTAIN OPERATION OF DEVICE.
 - Ⓜ (S) (FS) DENOTES EXISTING MANUAL PULL STATION TO REMAIN, TO BE LOWERED TO CORRECT HEIGHT, REFER TO FIRE ALARM PLANS.
 - Ⓜ (S) (FS) DENOTES EXISTING FIRE ALARM SYSTEM NOTIFICATION APPLIANCE AND ASSOCIATED WIRING AND CONDUIT NOT BEING REUSED TO BE REMOVED. PROVIDE JUMBO STAINLESS STEEL BLANK COVERPLATE OVER OPEN FIRE ALARM OUTLET BOXES RENDERED UNUSED BY DEMOLITION. EXISTING OUTLET BOX AND CONDUIT MAY BE REUSED WHERE LOCATION ALIGNS WITH NEW FIRE ALARM DEVICE BEING ADDED (DENOTED BY "EB" ON FIRE ALARM PLANS).
 - Ⓜ (S) (FS) DENOTES EXISTING DUCT MOUNTED SMOKE DETECTOR AND ASSOCIATED CONTROL MODULE AND KEYED SWITCH TO REMAIN. MAINTAIN EXISTING WIRING AS REQUIRED TO MAINTAIN OPERATION OF DEVICE AND SHUTDOWN OF HVAC UNIT AND/OR FIRE-SMOKE DAMPER. "D" DENOTES EXISTING HVAC UNIT DUCT DETECTOR. "FSD" DENOTES EXISTING DUCT DETECTOR LOCATED AT FIRE-SMOKE DAMPER. SEE EXISTING FIRE ALARM SYSTEM TESTING ON E001.
1. PHASING: DEMOLITION AND INSTALLATION ARE TO BE PHASED SO THAT ONLY ONE WING/AREA/SECTION OF SCHOOL IS OFFLINE AT A TIME. COORDINATE PHASING AND SCHEDULE WITH OWNER AND ENGINEER AT PRE-CONSTRUCTION MEETING PRIOR TO STARTING WORK. SUBMIT A WRITTEN PHASING PLAN AND SCHEDULE TO THE OWNER AND ENGINEER FOR REVIEW PRIOR TO STARTING WORK.
 2. EXISTING FIRE ALARM CONTROL PANEL(S) AND FIRE ALARM ANNUNCIATOR(S) TO REMAIN, INCLUDING ANY NOT INDICATED ON THESE DRAWINGS. MAINTAIN EXISTING WIRING, ETC. AS REQUIRED TO MAINTAIN OPERATION OF THE FIRE ALARM SYSTEM DURING DEMOLITION AND CONSTRUCTION.
 3. EXISTING SMOKE AND HEAT DETECTORS TO REMAIN UNLESS NOTED OTHERWISE.
 4. EXISTING FIRE ALARM DACT/IPDACT TO REMAIN UNLESS NOTED OTHERWISE.
 5. EXISTING MONITORING MODULES TO REMAIN UNLESS NOTED OTHERWISE.
 6. EXISTING MAGNETIC DOOR HOLDERS AND ASSOCIATED SMOKE DETECTORS AND CONTROL MODULES TO REMAIN UNLESS NOTED OTHERWISE.
 7. EXISTING MANUAL PULL STATIONS TO REMAIN UNLESS NOTED OTHERWISE. LOWER MANUAL PULL STATIONS WHERE NOTED.
 8. EXISTING DUCT MOUNTED SMOKE DETECTORS AND ASSOCIATED KEY SWITCHES AND CONTROL MODULES TO BE REMOVED AND REPLACED UNLESS NOTED OTHERWISE.
 9. EXISTING NOTIFICATION APPLIANCES (HORNS AND HORN/STROBES) TO BE REMOVED. EXISTING NAC PANELS NO LONGER IN USE TO BE REMOVED.
 10. PROVIDE JUMBO STAINLESS STEEL BLANK COVERPLATE OVER ALL OPEN FIRE ALARM OUTLET BOXES RENDERED UNUSED BY DEMOLITION. EXISTING OUTLET BOX AND CONDUIT MAY BE REUSED WHERE LOCATION ALIGNS WITH NEW FIRE ALARM DEVICES BEING ADDED, REFER TO E500 SHEETS.
 11. GENERAL NOTE: THE EXISTING FIRE ALARM SYSTEM IS TO REMAIN IN OPERATION DURING DEMOLITION AND DURING INSTALLATION OF NEW DEVICES. EXISTING CONDUIT, WIRING, AND BOXES FOR ITEMS BEING REMOVED MAY BE REUSED ONLY WHERE THEY COMPLY WITH THE REQUIREMENTS OF THE CONTRACT DOCUMENTS IN TERMS OF LOCATIONS, MOUNTING HEIGHTS, ROUTING, CONDUIT FILL, ETC.
 12. GENERAL NOTE: EXISTING FIRE ALARM DEVICES ARE SHOWN FOR INFORMATION PURPOSES ONLY AND ARE NOT INTENDED TO REFLECT ALL EXISTING DEVICES INSTALLED. DEVICES INDICATED ARE BASED ON AVAILABLE RECORD DRAWINGS AND A SITE VISIT PERFORMED BY SIMS GROUP ENGINEERS, INC. THE CONTRACTOR IS RESPONSIBLE FOR REMOVAL OF ALL EXISTING FIRE ALARM DEVICES AND ASSOCIATED WIRING AND CONDUIT NO LONGER IN USE WHETHER OR NOT THE DEVICES ARE INDICATED ON THESE PLANS. REFER TO DEMOLITION NOTES ON E001.

FIRE ALARM PLAN GENERAL NOTES:

- A. PROVIDE ALL EQUIPMENT, HARDWARE, PROGRAMMING, AMPLIFIERS, NAC PANELS, MODULES, ETC. NECESSARY TO PROVIDE A VOICE EVACUATION FIRE ALARM SYSTEM. NEW EQUIPMENT MUST BE COMPATIBLE WITH EXISTING EST FIRE ALARM SYSTEM.
- B. HVAC UNIT DUCT DETECTOR (UNIT PRICE #1) - PROVIDE DUCT SMOKE DETECTOR INSTALLED PER NFPA-72 AND REMOTE INDICATOR WITH KEYED TEST SWITCH. PROVIDE CONTROL MODULE PROGRAMMED FOR UNIT SHUT DOWN BASED ON ACTIVATION OF ASSOCIATED DUCT SMOKE DETECTOR. COORDINATE WITH HVAC CONTROLS AND PROVIDE ALL APPURTENANCES FOR A COMPLETE, OPERATIONAL SYSTEM.
- C. FIRE/SMOKE DAMPER (UNIT PRICE #2) - PROVIDE A DUCT SMOKE DETECTOR, OR SPOT SMOKE DETECTOR(S) PER NFPA-72, TABLE A.17.7.5.4.2.2a WHERE NO DUCT EXISTS WITHIN 12" OF DAMPER, AND REMOTE INDICATOR WITH KEYED TEST SWITCH. PROVIDE CONTROL MODULE PROGRAMMED FOR DAMPER ACTUATION BASED ON ACTIVATION OF ASSOCIATED SMOKE DETECTOR, RELAYS AND ALL APPURTENANCES REQUIRED AND COORDINATE WITH HVAC CONTROLS FOR A COMPLETE OPERATIONAL SYSTEM.

EXISTING POST INDICATOR VALVE (PIV) MONITORING MODULE(S), FIELD VERIFY LOCATION AND VERIFY PROPER OPERATION, TYPICAL.

EXISTING FLOW & TAMPER SWITCH MONITORING MODULES, VERIFY PROPER OPERATION, TYPICAL.

CONTROL MODULE FOR INTERFACE WITH AUDITORIUM SOUND SYSTEM, COORDINATE WITH RACK LOCATION AND SOUND SYSTEM REQUIREMENTS, FIELD VERIFY LOCATION PRIOR TO STARTING WORK.

EXISTING SMOKE DETECTORS, DOOR HOLDERS, AND CONTROL RELAY FOR RATED DOORS, VERIFY PROPER OPERATION, TYPICAL.

PROVIDE FIRE ALARM RECORD DOCUMENT CABINET ADJACENT TO FACP

PROVIDE ADA COMPLIANT PLACARD INSTALLED AT GUIDANCE SIDE OF DOOR. PLACARD SHALL BE PHENOLIC (WHITE WITH BLACK LETTERING) OR METALLIC AND ENGRAVED WITH "FIRE ALARM MAIN CONTROL PANEL LOCATION INSIDE".

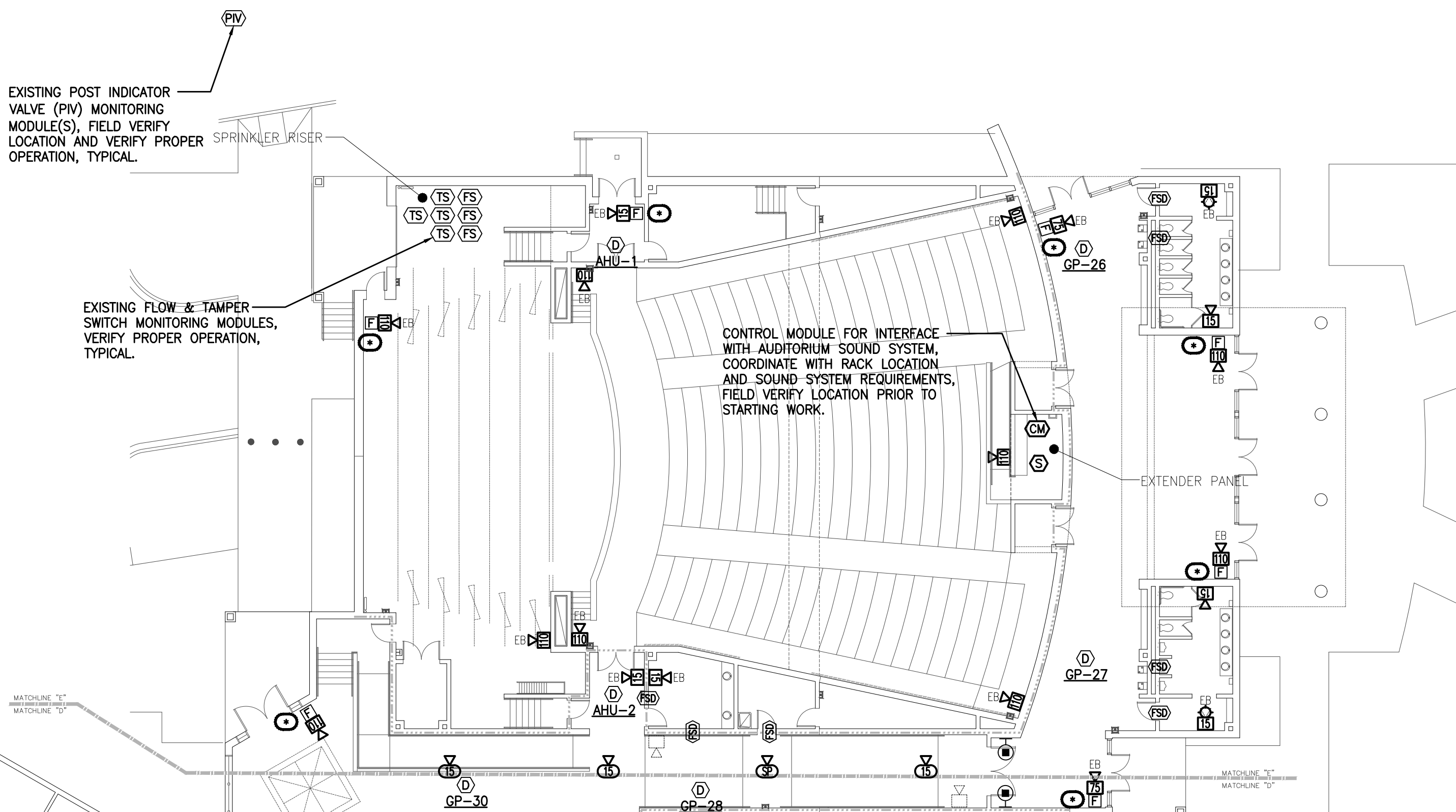
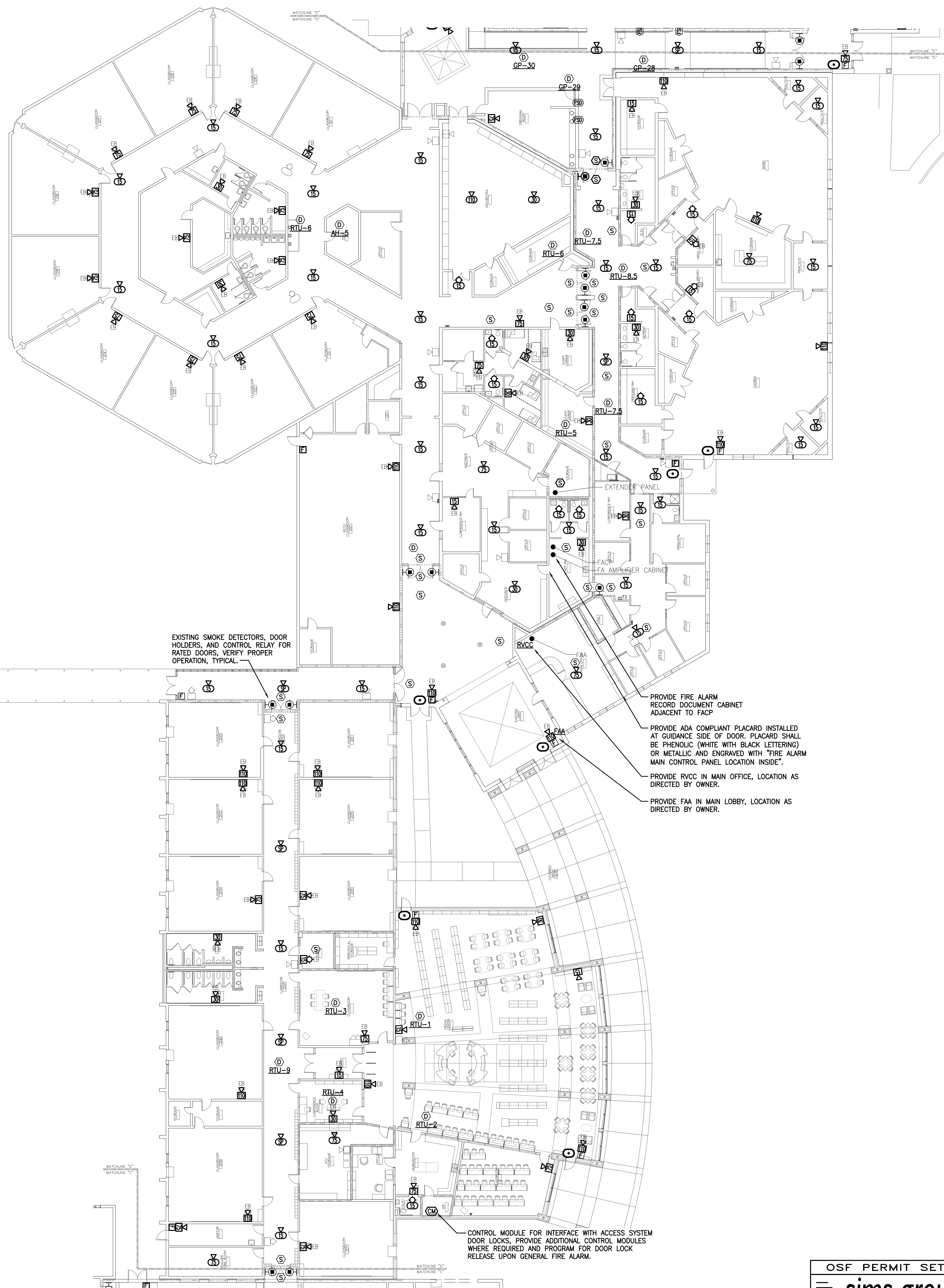
PROVIDE RVCC IN MAIN OFFICE, LOCATION AS DIRECTED BY OWNER.

PROVIDE FAA IN MAIN LOBBY, LOCATION AS DIRECTED BY OWNER.

CONTROL MODULE FOR INTERFACE WITH ACCESS SYSTEM DOOR LOCKS, PROVIDE ADDITIONAL CONTROL MODULES WHERE REQUIRED AND PROGRAM FOR DOOR LOCK RELEASE UPON GENERAL FIRE ALARM.

2 FIRE ALARM - AREA 'E'
SCALE: 1/16"=1'-0"

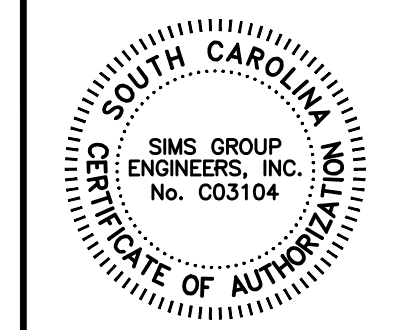
1 FIRE ALARM - AREA 'D'
SCALE: 1/16"=1'-0"



**Jumper
Carter
Sease**

ARCHITECTS

412 Meeting Street
West Columbia
South Carolina



08/30/2018

these drawings are the property of Jumper Carter Sease Architects (JCSA), and may not be reproduced, copied or used in whole or in part without written consent of the architect. Any infringement will be subject to legal action.

**FIRE ALARM REPLACEMENT
AIRPORT HIGH SCHOOL
LEXINGTON SCHOOL DISTRICT TWO**

OSF PERMIT SET

No	Description	Date

DRAWN BY: JMO

CHECKED BY: CLP

COMM NO: 18019

DATE: AUGUST 2018

SHEET TITLE:

FIRE ALARM
PLAN AREA 'D'
AND 'E'

SHEET NO:

E-504

OSF PERMIT SET C18030

sims group

SIMS GROUP ENGINEERS, INC.
800 Columbiana Drive, Suite 208
Irmo, South Carolina 29063
Phone: (803) 765-1007 Fax: (803) 765-1030
www.simgroupusa.com