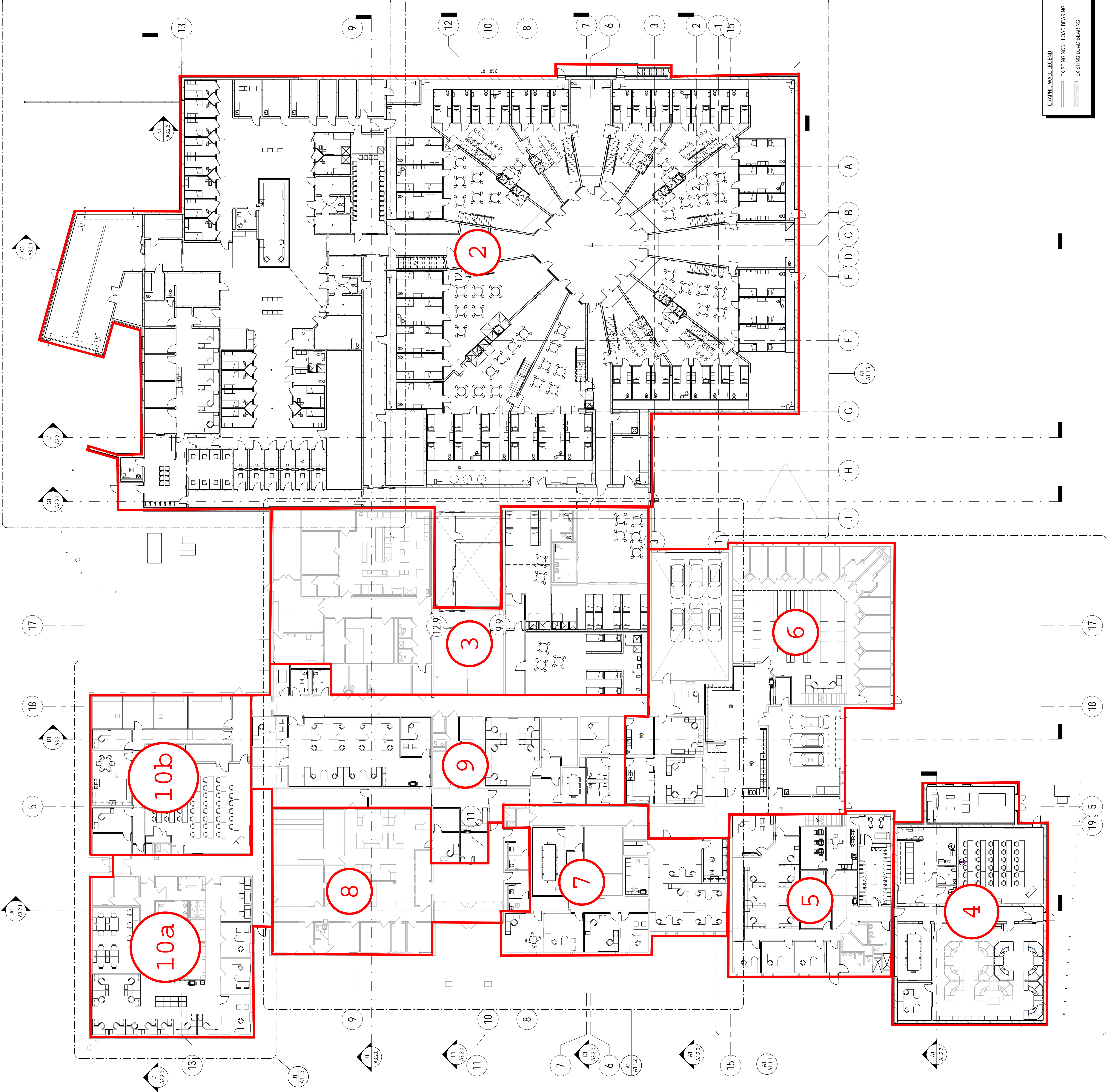


Area 1 = Site

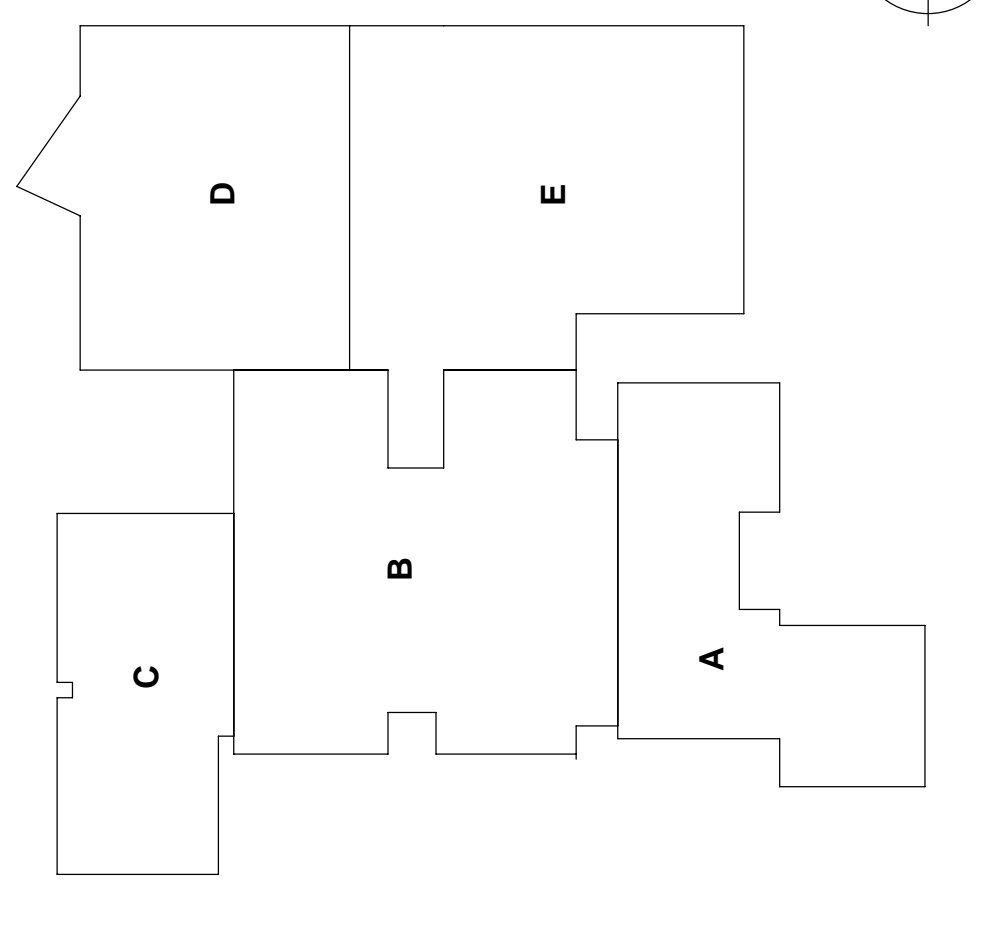


A1

OVERALL FIRST FLOOR PLAN
1/16" = 1'-0"

A21

KEY PLAN
NTS



SHEET NO.
A1-1.0

JOB NO. 18-262-01
© 2019 FGM ARCHITECTS, INC.

FRANKLIN COUNTY PUBLIC SAFETY FACILITY
FRANKLIN COUNTY
400 E. LOVELL
Union, MO 63084

OWNER:
Franklin County
Union, MO 63084

BP-2019-A3 DETENTION & SECURITY

OVERALL FIRST FLOOR PLAN

DATE: 02.01.19
DRAWN: LM
CHECKED: KM
APPROVED: JM

FGM Architect Inc.
Missouri Certificate of
Authority #000311

PROFESSIONAL SEAL
DATE: xx/xx/xx

THE INFORMATION
ON THIS
DOCUMENT IS
PRELIMINARY OR
INCOMPLETE, NOT
FOR CONSTRUCTION,
RECORDING OR
PURPOSES OR
IMPLEMENTATION

PG Name: Josh Mandell
PG Number: 18-262-01
EXPIRATION DATE: xx/xx/xx

MISSOURI STATE CERTIFICATE OF AUTHORITY #XXXXXXXXXX

ARCHITECTURE
Elevatus Architecture
111 East Wayne St., Suite 555
St. Louis, MO 63102
Phone: 314.850.0524
Fax: 314.850.0524

MISSOURI STATE CERTIFICATE OF AUTHORITY #XXXXXXXXXX

STRUCTURAL
KPF Consulting Eng.
1800 Drexel Ave., Suite 100
St. Louis, MO 63103
Phone: 314.850.0524
Fax: 314.850.0524

MISSOURI STATE CERTIFICATE OF AUTHORITY #XXXXXXXXXX

CIVIL
Cochran Engineering
10000 Olive St., Suite 101
Union, MO 63084
Phone: 635.584.0540
Fax: 635.584.0540

MISSOURI STATE CERTIFICATE OF AUTHORITY #XXXXXXXXXX

MECHANICAL/ELECTRICAL/PLUMBING
SCE Engineering Inc.
3800 Olive St., Suite 100
Chesterfield, MO 63005
Phone: 636.530.7770
Fax: 636.530.7770

MISSOURI STATE CERTIFICATE OF AUTHORITY #088311

FGM ARCHITECTS
10 South Broadway, Suite
St. Louis, MO 63102-1712
Phone: 314.439.1601
Fax: 314.439.1602

NO.	DATE	DESCRIPTION	ISSUANCE

KEY NUMBER	DESCRIPTION

L21 NOTATIONS

THE INFORMATION ON THIS DOCUMENT IS PRELIMINARY OR INCOMPLETE, NOT FOR CONSTRUCTION, RECORDING OR IMPLEMENTATION