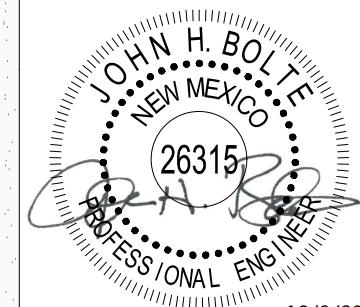




216 S. MAIN STREET  
 P.O. BOX 1538  
 JOPLIN, MISSOURI 64802  
 TEL: 417.624.2333  
 FAX: 417.624.2441  
 EMAIL: jbolte@small-arrow.com

SMALL ARROW ENGINEERING, LLC.  
 CERTIFICATES OF AUTHORIZATION:  
 MISSOURI: E-2010013647  
 KANSAS: E-1930  
 ARKANSAS: 2097  
 OKLAHOMA: 5937

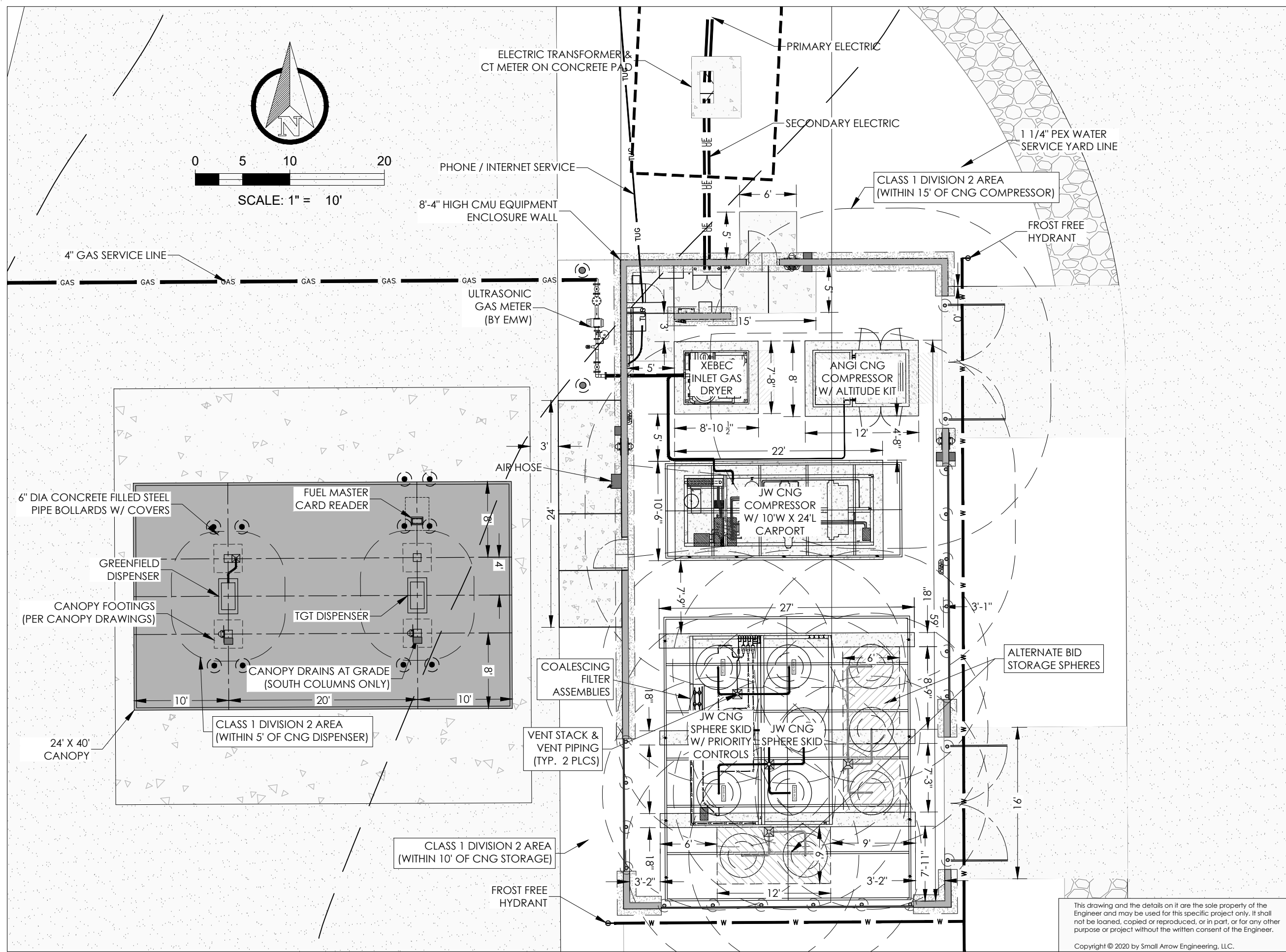


JOHN H. BOLTE - PROFESSIONAL ENGINEER  
 MO LIC E22511 OK LIC 18035  
 KS LIC 14094 AR LIC 14310

**PUBLIC ACCESS CNG STATION**  
**E.M.W. GAS ASSOCIATION**  
**614 U.S. Route 66 (W)**  
**MORIARTY, NM 87035**  
**CNG EQUIPMENT LAYOUT**

SURVEY BY: N/A PROJECT #: 20104  
 DRAWN BY: TED DATE: 10/08/2020  
 CHECKED BY: JHB SCALE: 1"=10'

PROJECT: PUBLIC CNG STATION  
 SHEET DESC: CNG EQUIPMENT LAYOUT  
 SHEET: 3 OF 27



This drawing and the details on it are the sole property of the Engineer and may be used for this specific project only. It shall not be loaned, copied or reproduced, or in part, or for any other purpose or project without the written consent of the Engineer.  
 Copyright © 2020 by Small Arrow Engineering, LLC.