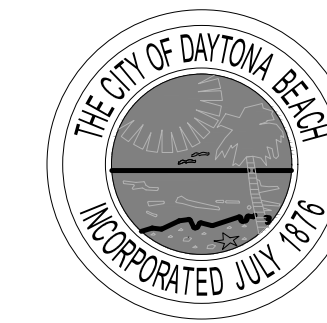


PENINSULA CLUB WINDOW AND DOOR REPLACEMENT

THE CITY OF DAYTONA BEACH



PUBLIC WORKS DEPARTMENT
TECHNICAL SERVICES

950 BELLEVUE AVENUE
DAYTONA BEACH, FL 32114

P 386 671 8610
F 386 957 6404

BRENT COHEN, ARCHITECT
FL LICENSE # AR93854

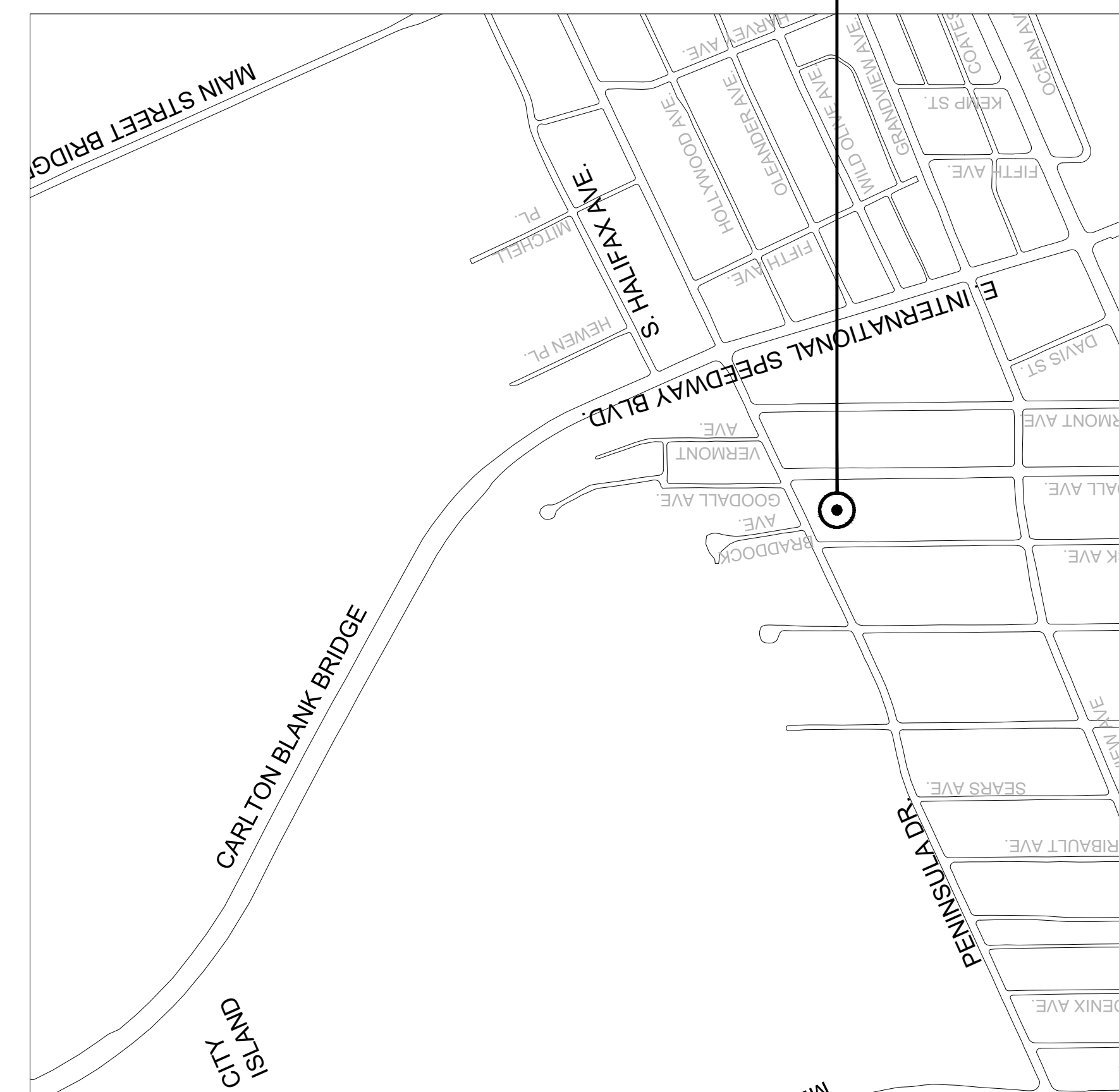
ISSUE	DATE
BID SET	9.27.19

JAMES V. CHISHOLM
ANDREW HOLMES, P.E.
DAVID WALLER
JIM NELSON, P.E.
BRENT COHEN, R.A.

CITY MANAGER
PUBLIC WORKS DIRECTOR
DEPUTY PUBLIC WORKS DIRECTOR
CITY ENGINEER
ARCHITECT

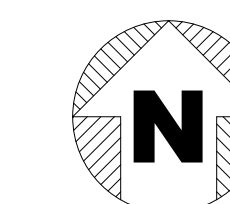
INDEX OF DRAWINGS	SHEET
COVER SHEET	A0.1
ARCHITECTURAL	
FLOOR PLAN + SCHEDULES	A2.1
DETAILS	A9.1

PROJECT LOCATION



VICINITY MAP

SCALE: NTS

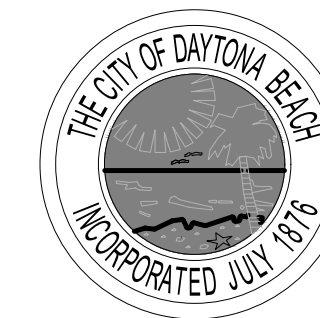


PENINSULA CLUB WINDOWS AND DOORS REPLACEMENT

415 SOUTH PENINSULA DRIVE
DAYTONA BEACH FL 32118

SCALE:	AS NOTED
DRAWN:	BCC
CHECKED:	BCC
PROJECT NO:	2019-007

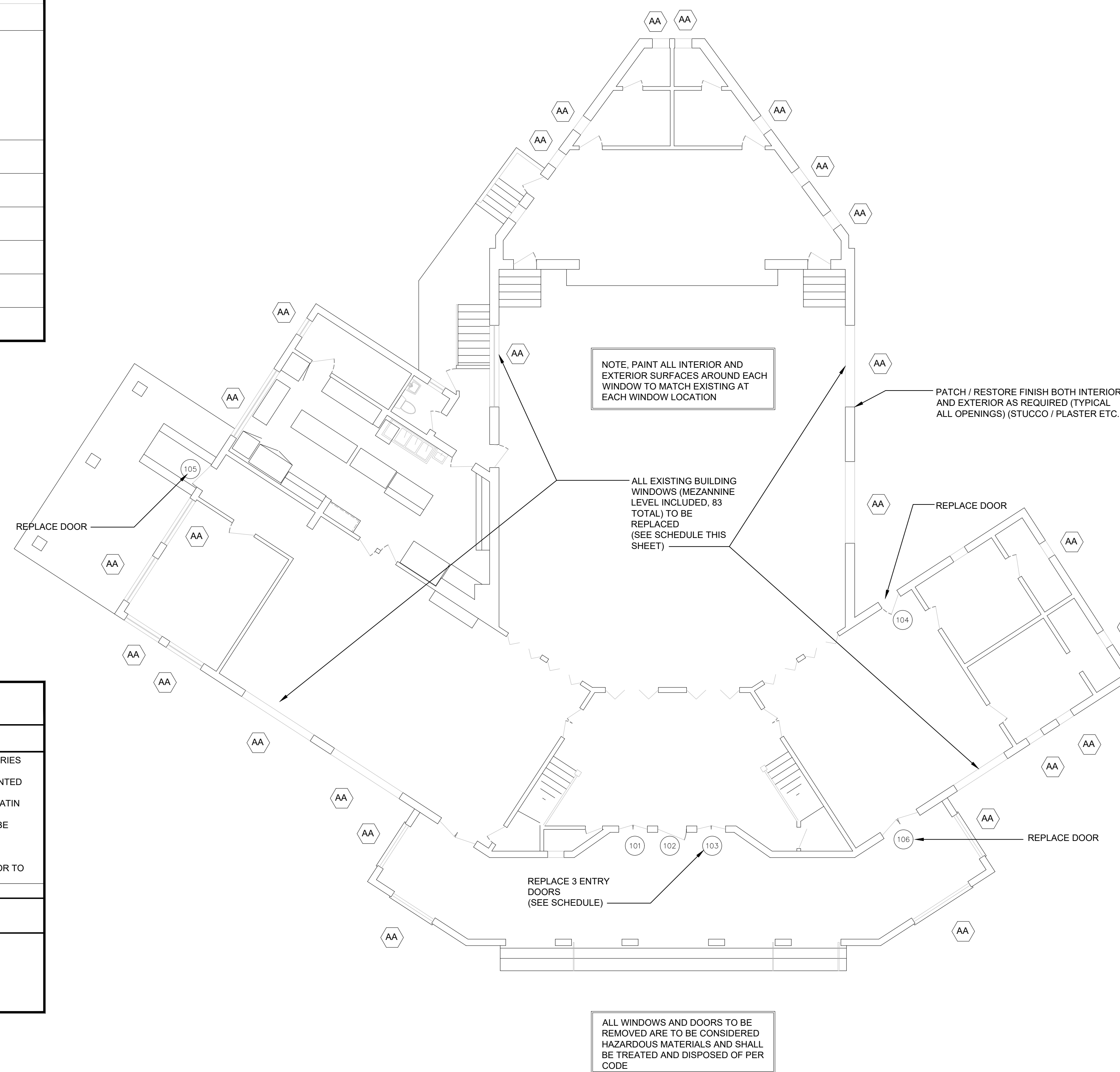
A0.1



DOOR SCHEDULE							
MARK	TYPE	DOOR			FINISH	MANUF. NUMBER WHEN APPLICABLE	REMARKS
		UNIT WIDTH	HEIGHT V.I.F.	MAT'L			
101	ALUM. CLAD	(PR) 3'-0"	6'-8"	ALUM. CLAD	WHITE	TBD	SEE GENERAL REMARKS ABOVE
102	ALUM. CLAD	3'-4 1/2"	7'-0"	ALUM. CLAD	WHITE	TBD	SEE GENERAL REMARKS ABOVE
103	ALUM. CLAD	(PR) 3'-0"	6'-8"	ALUM. CLAD	WHITE	TBD	SEE GENERAL REMARKS ABOVE
104	ALUM. CLAD	3'-0"	6'-8"	ALUM. CLAD	WHITE	TBD	SEE GENERAL REMARKS ABOVE
105	ALUM. CLAD	3'-0"	6'-8"	ALUM. CLAD	WHITE	TBD	SEE GENERAL REMARKS ABOVE
106	ALUM. CLAD	(PR) 2'-6"	7'-0"	ALUM. CLAD	WHITE	TBD	SEE GENERAL REMARKS ABOVE

WINDOW SCHEDULE							
MARK	FRAME SIZE (U.O.N.)			TYPE	MANUFACTURER	REMARKS	
	WIDTH	HEIGHT	MAT'L				
AA	VARIES	VARIES	ALUMINUM CLAD	WHITE	WHITE	FIXED CASEMENT	ANDERSEN E SERIES OR EQUAL

DOOR / WINDOW SCHEDULE NOTES	
1.	EXTERIOR DOOR AND WINDOW THICKNESS PER PRODUCT APPROVAL
2.	COORDINATE DIMENSIONS SHOWN ABOVE WITH MANUFACTURERS DIMENSION REQUIREMENTS.
3.	FACTORY PRIME +PAINT ALL DOORS AND DOOR FRAMES
4.	GENERAL CONTRACTOR AND WINDOW / DOOR SUPPLIER TO VERIFY ALL QUANTITIES AND PROVIDE SHOP DRAWINGS PRIOR TO ORDERING / FABRICATION



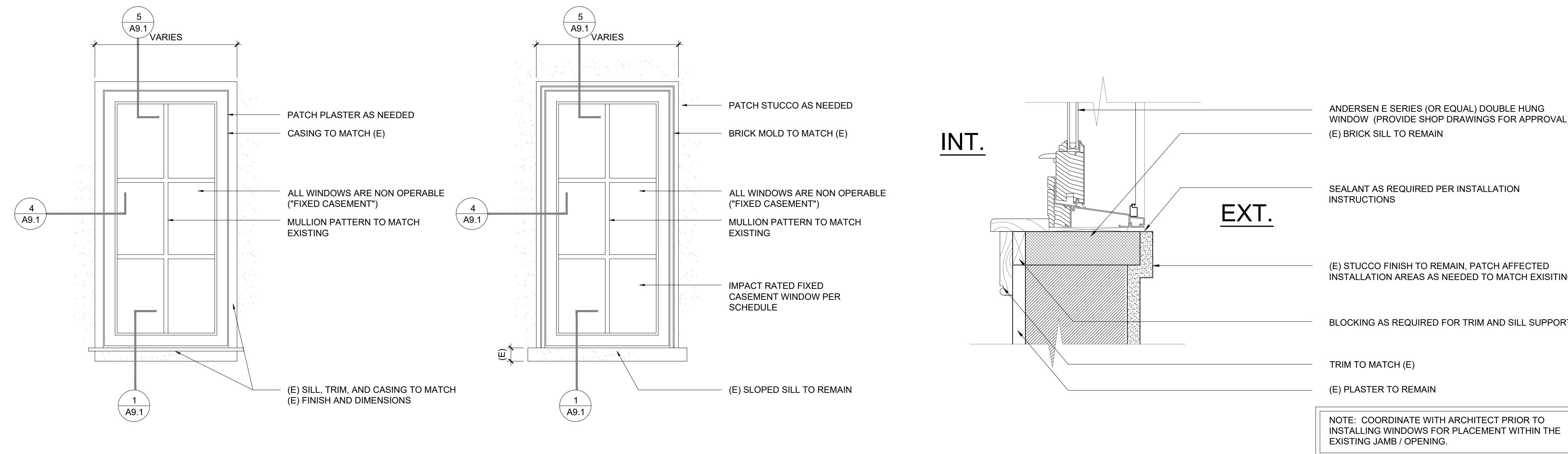
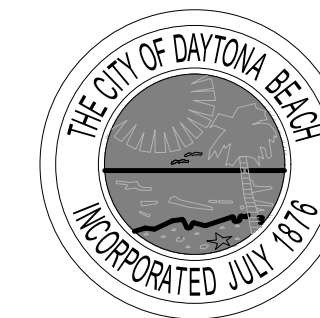
ISSUE	DATE
BID SET	9.27.19

**PENINSULA CLUB
WINDOWS AND DOORS
REPLACEMENT**

**415 SOUTH PENINSULA DRIVE
DAYTONA BEACH FL
32118**

SCALE:	AS NOTED
DRAWN:	BCC
CHECKED:	BCC
PROJECT NO:	2019-007

A2.1



ISSUE	DATE
BID SET	9.27.19

NOTE: COORDINATE WITH ARCHITECT PRIOR TO INSTALLING WINDOWS FOR PLACEMENT WITHIN THE EXISTING JAMB / OPENING.

3 TYPICAL ELEVATION DETAIL (INTERIOR)
SCALE: 3/4" = 1'-0"

2 TYPICAL ELEVATION DETAIL (EXTERIOR)
SCALE: 3/4" = 1'-0"

1 WINDOW SILL DETAIL (TYPICAL)
SCALE: 3" = 1'-0"

PENINSULA CLUB WINDOWS AND DOORS REPLACEMENT

415 SOUTH PENINSULA DRIVE DAYTONA BEACH FL 32118



SCALE:	AS NOTED
DRAWN:	BCC
CHECKED:	BCC
PROJECT NO:	2019-007

A9.1