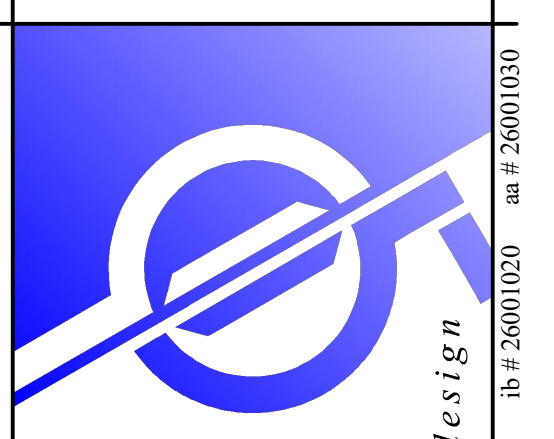
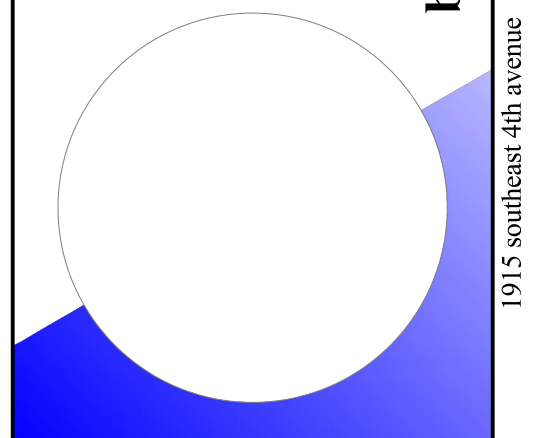


A1 SITE PLAN
 1/8" = 1'-0"
 0 4 8 16 32



SITE & BUILDING IMPROVEMENT:
 BCHA GRIFFIN GARDEN / TEQUESTA RESERVE
 APARTMENT PHASE II



barranco gonzalez • architecture • planning • interior design
 DAVIE, FL 33314
 phone: (954) 961-7675 fax: (954) 961-7685 mail@bgonline.com

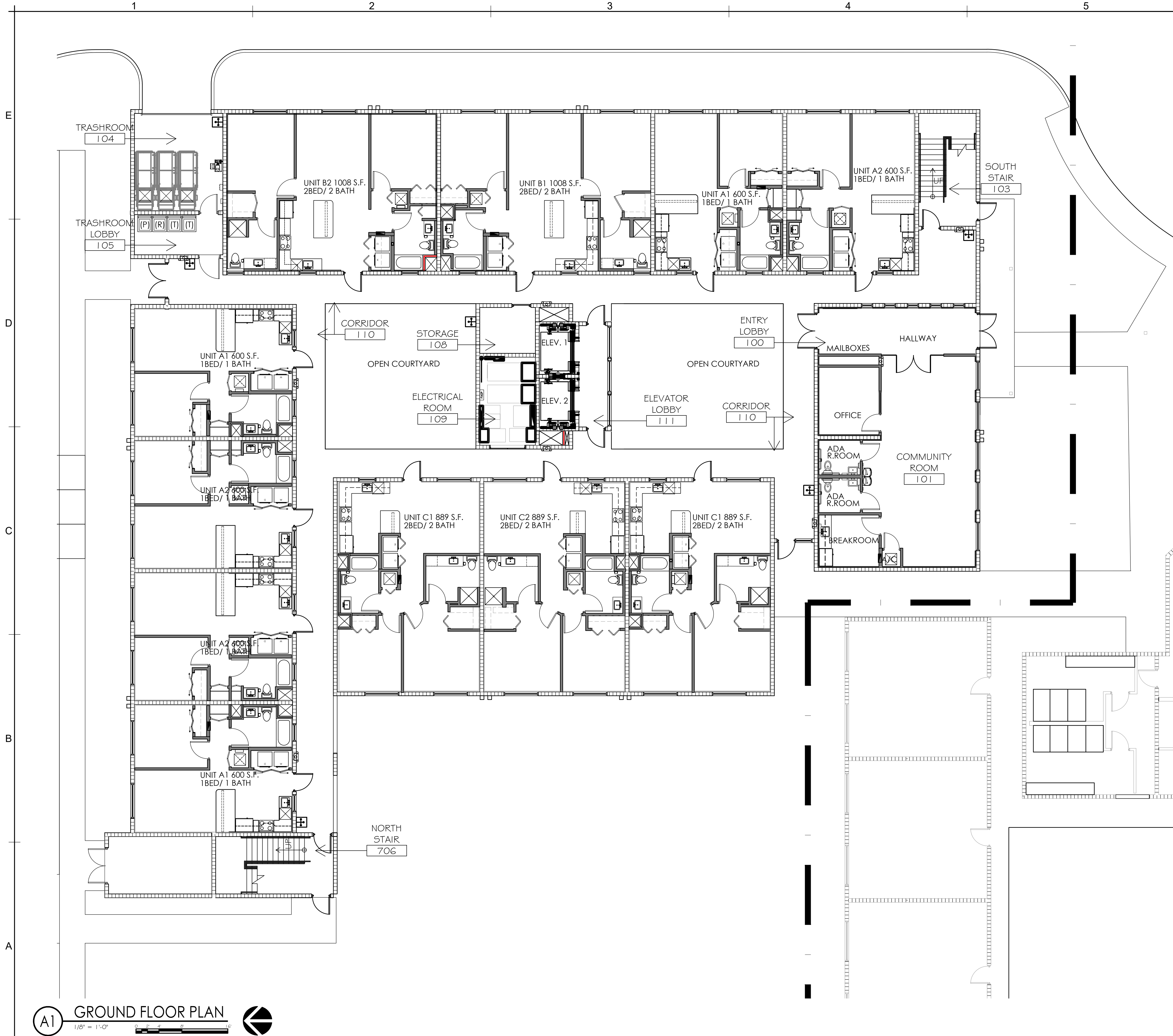
DESIGNED	DRAWN	CHECKED
CVG	JO	CVG
DATE:	COMM:	
01.05.22	211120	

REVISIONS

OVER ALL SITE PLAN

CONSTRUCTION DOCUMENTS

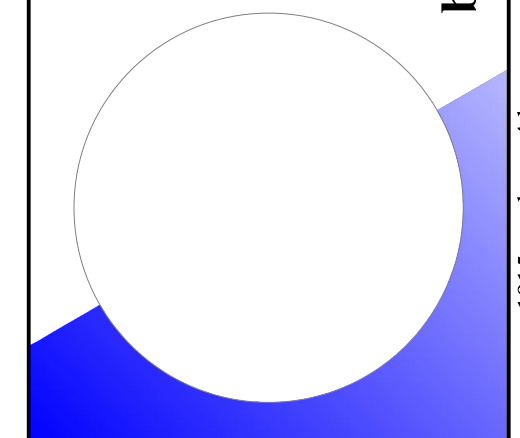
AS-102



A1 GROUND FLOOR PLAN
 1/8" = 1'-0"

A6 KEYNOTES

SITE & BUILDING IMPROVEMENT:
 BCHA GRIFFIN GARDEN / TEQUESTA RESERVE
 APARTMENT PHASE II



barranco gonzalez • architecture • planning • interior design
 DAVIE, FL 33314
 phone: (954) 961-7675 fax: (954) 961-7685 mail: info@bgaarchitecture.com

1915 southeast 4th avenue Fort Lauderdale, FL 33316 consultant

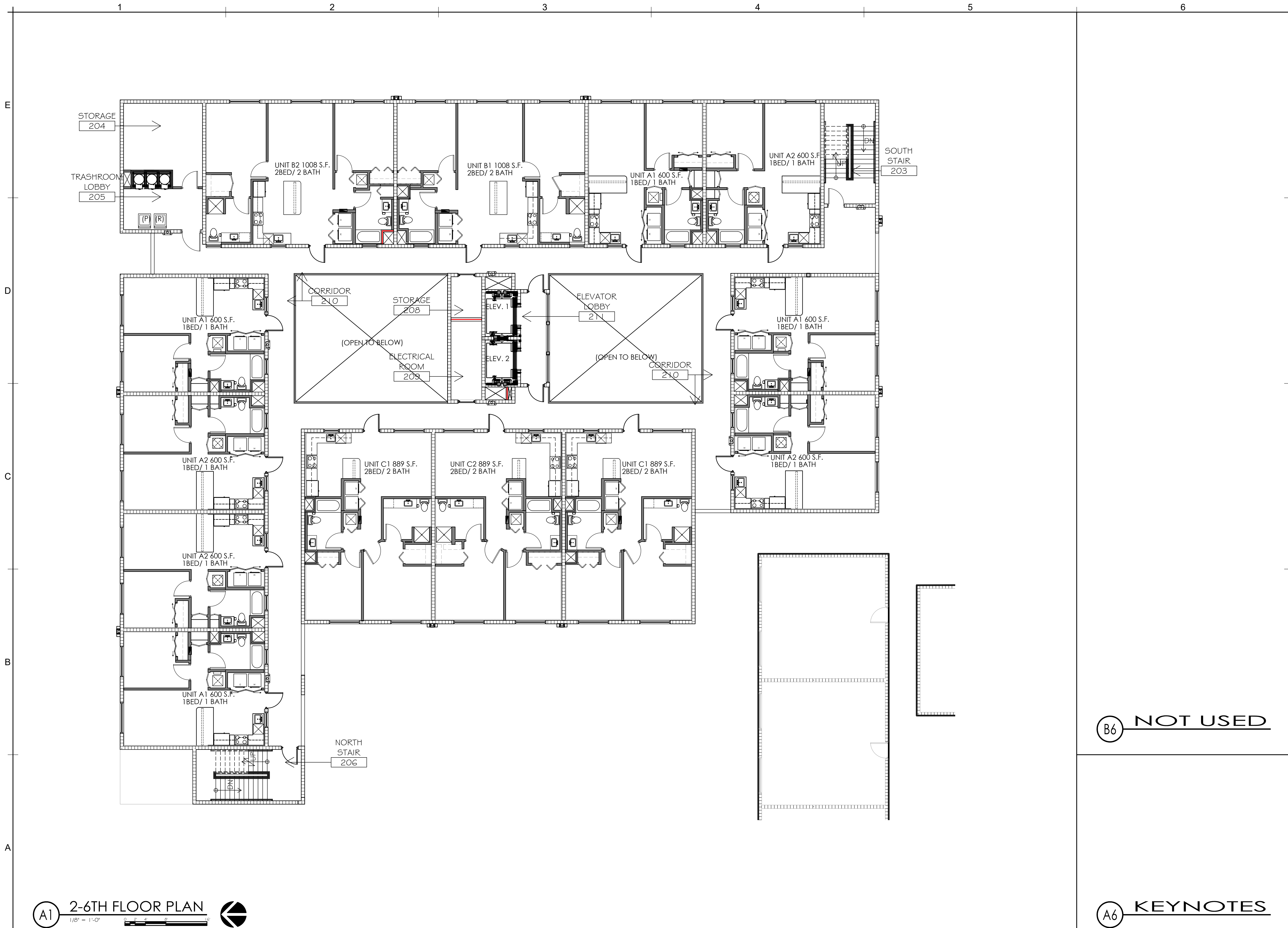
DESIGNED	DRAWN	CHECKED
CVG	JO	CVG
DATE:	01.05.22	COMM:
		211120

REVISIONS	

FLOOR PLAN

CONSTRUCTION DOCUMENTS

A-101

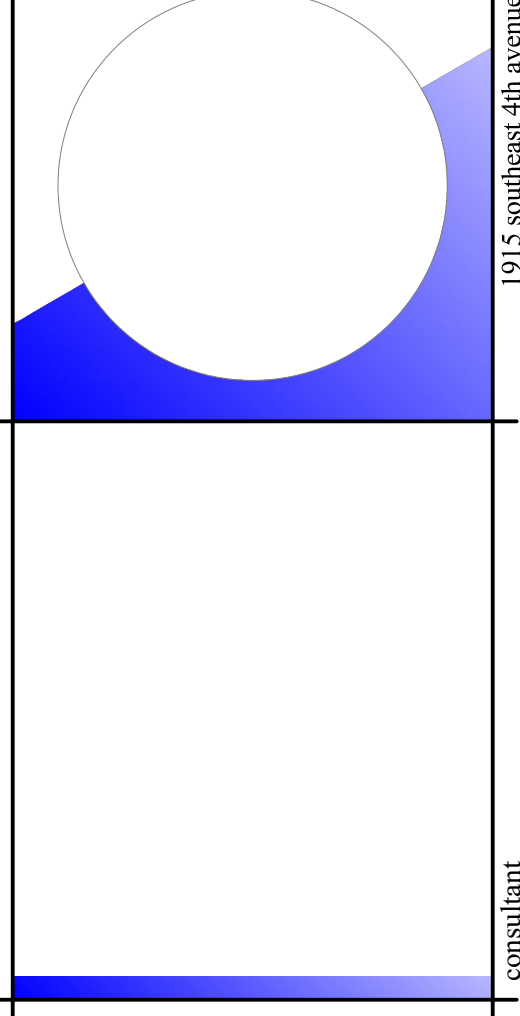


A1 2-6TH FLOOR PLAN
 1/8" = 1'-0"

B6 NOT USED

A6 KEYNOTES

SITE & BUILDING IMPROVEMENT:
 BCHA GRIFFIN GARDEN / TEQUESTA RESERVE
 APARTMENT PHASE II



DESIGNED	DRAWN	CHECKED
CVG	JO	CVG
DATE:	COMM:	
01.05.22	211120	

REVISIONS

FLOOR PLAN

CONSTRUCTION DOCUMENTS

A-102

barranco gonzalez • architecture • planning • interior design
 Fort Lauderdale, FL 33316 phone: (954) 961-7675 fax: (954) 961-7685 mail@bgonline.com
 1915 southeast 4th avenue consultant
 DAVIE, FL 33314
 # 26001020 # 26001030