

PORTAGE PUBLIC SCHOOLS

PORTAGE, MI

NORTH MIDDLE SCHOOL CLASSROOM AUDIO/VIDEO



PORTAGE NORTH MIDDLE SCHOOL
1100 WEST MILHAM AVE.
PORTAGE, MI 49024

DRAWING LIST:

- TC301 AUDIO/VIDEO LEGENDS, SCHEDULES & DETAILS
- TC302 CLASSROOM AUDIO/VIDEO CONNECTIVITY DIAGRAM
- TC303 CLASSROOM AUDIO/VIDEO CONNECTIVITY DIAGRAM
- TC401B NORTH MIDDLE SCHOOL FIRST FLOOR AUDIO/VIDEO PLAN - AREA B
- TC401C NORTH MIDDLE SCHOOL FIRST FLOOR AUDIO/VIDEO PLAN - AREA C
- TC402B NORTH MIDDLE SCHOOL SECOND FLOOR AUDIO/VIDEO PLAN - AREA B
- TC402C NORTH MIDDLE SCHOOL SECOND FLOOR AUDIO/VIDEO PLAN - AREA C
- TC403C NORTH MIDDLE SCHOOL THIRD FLOOR AUDIO/VIDEO PLAN - AREA C

Mark	Revision	Description
	ISSUED FOR BID	7/23/18

These drawings are the Property of the Designer and are not to be re-used or reproduced without the designer's permission.
CommTech Design

Date	7/23/2018
Project	1253_01
Sheet	COVER

COMMUNICATION SYMBOL LEGEND

SYMBOL	DESCRIPTION
◇	COMMUNICATIONS OUTLET IN WALL THROUGH EXISTING CONDUIT OR FUTURE CONDUIT
A	EQUIPMENT SCHEDULE, SEE COMMUNICATIONS EQUIPMENT SCHEDULES
1	CABLE SCHEDULE, SEE COMMUNICATIONS CABLE SCHEDULE
①	KEYNOTES. REFER TO NOTES ON THE SHEET FOR ADDITIONAL INFORMATION
Ⓢ _x	SPEAKERS. "X" REFERS TO SPEAKER TYPE
□	VIDEO PROJECTOR SHORT THROW LOCATION. SEE DETAILS ABOUT REQUIREMENTS
□ LCD	LCD FLAT PANEL DISPLAY. INCLUDE A MOUNT.

ABBREVIATIONS

ABBREV.	DESCRIPTION	ABBREV.	DESCRIPTION
2G	TWO-GANG BOX - PROVIDED BY EC	NIC	NOT IN CONTRACT
AC	ABOVE COUNTER - INSTALL BACKBOX SAME HEIGHT AS OTHER ELECTRICAL OUTLETS ABOVE THE COUNTER.	PBO	PROVIDED BY OTHERS
AFF	ABOVE FINISHED FLOOR	PCO-1	PATCH CORD ORGANIZER - 1 UNIT HIGH
AFG	ABOVE FINISHED GROUND	PCO-2	PATCH CORD ORGANIZER - 2 UNITS HIGH
AWG	AMERICAN WIRE GAUGE	PER	PROTECTED ENTRANCE TERMINAL
C-EMT	EMT TYPE CONDUIT	QTY	QUANTITY
EC	ELECTRICAL CONTRACTOR		

CLASSROOM AV EQUIPMENT SCHEDULE

MARK	DESCRIPTION	MANUFACTURER	PART NO.
VA	CLASSROOM VIDEO PROJECTOR SHORT THROW INTERACTIVE. SHALL BE A MINIMUM OF 3000 ANSI LUMENS, 1280X800 NATIVE RESOLUTION, INSTALL TO THE WALL	EPSON	685W
VB	AUDIO SYSTEM FOR A CLASSROOM. EQUIP WITH ALL SPEAKER CABLING. PROVIDE DROP CEILING SPEAKERS OR CEILING SPEAKERS DEPENDING ON CEILING TYPE. FIELD VERIFY.	LIGHTSPEED	ACCESS LINK
VC	DOCUMENT CAMERA	EXISTING	BY OWNER
VD	PLASTIC MESH CABLE PROTECTOR AND WRAP.	TECH FLEX	F6NXX
VE	NOT USED	NOT USED	NOT USED
VF	NOT USED	NOT USED	NOT USED
VG	HDMI SWITCHER, 2-PORT. EQUIPPED WITH AUDIO-DE-EMBEDDING	KEY DIGITAL	KD-PR02X1
VH	NOT USED	NOT USED	NOT USED
VI	CONTROL SYSTEM BREAKOUT FOR IN LECTERN -EXISTING	SP CONTROLS	TB-8
VX	METAL MESH MOUNTING PLATE WITH SPRING LOADED PINS FOR MOUNTING UNDERNEATH LECTERN.	WIREMOLD	ECB-SHELF

COMMUNICATION CABLE SCHEDULE

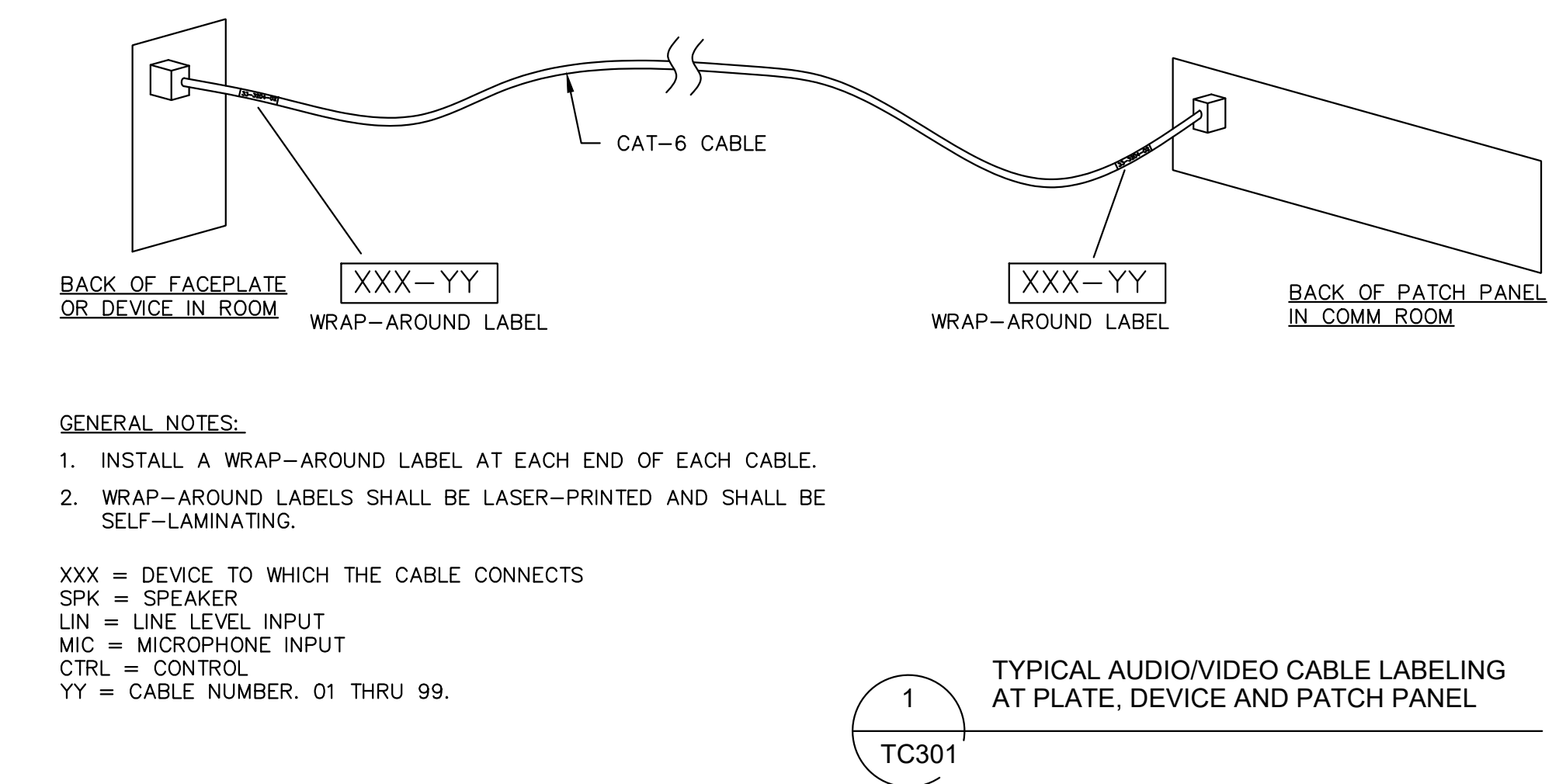
MARK	DESCRIPTION	MANUFACTURER	PART NO.
1	18 AWG TWISTED PAIR DISTRIBUTED SPEAKER CABLE	WEST PENN	25224B
2	CONTROL CABLE FOR AV CONTROLLER. -PLENUM	CONTRACTOR	CONTRACTOR
3	HDMI CABLE, MALE TO MALE -PLENUM 9ACTIVE FOR LONG DISTANCES WHERE REQ'D	CONTRACTOR	CONTRACTOR
4	CAT-6 PLENUM, BLACK IN COLOR FOR SPKR	GENERAL CABLE	7131807
5	CAT-6 PLENUM, GRAY IN COLOR FOR CONTROL	GENERAL CABLE	7231803

LCD DISPLAY EQUIPMENT SCHEDULE

MARK	DESCRIPTION	MANUFACTURER	PART NO.
XA	70" LCD EXISTING -REMOVE FROM EXISTING MS AND INSTALL IN NEW BLDG	SHARP	BY OWNER
XB	LCD WALL, PULLOUT SWING MOUNT	CHIEF	TS525TU

SPEAKER SCHEDULE

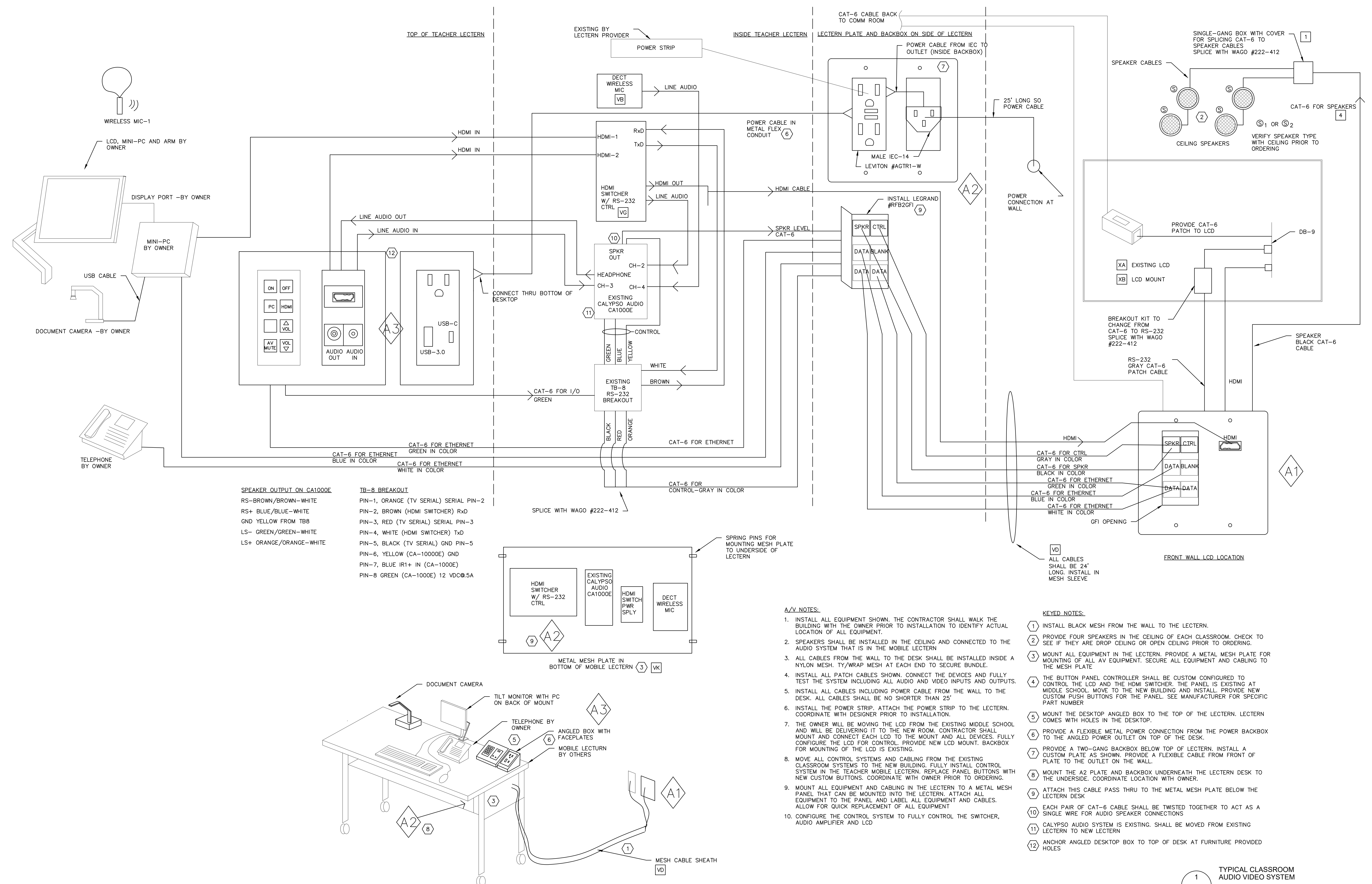
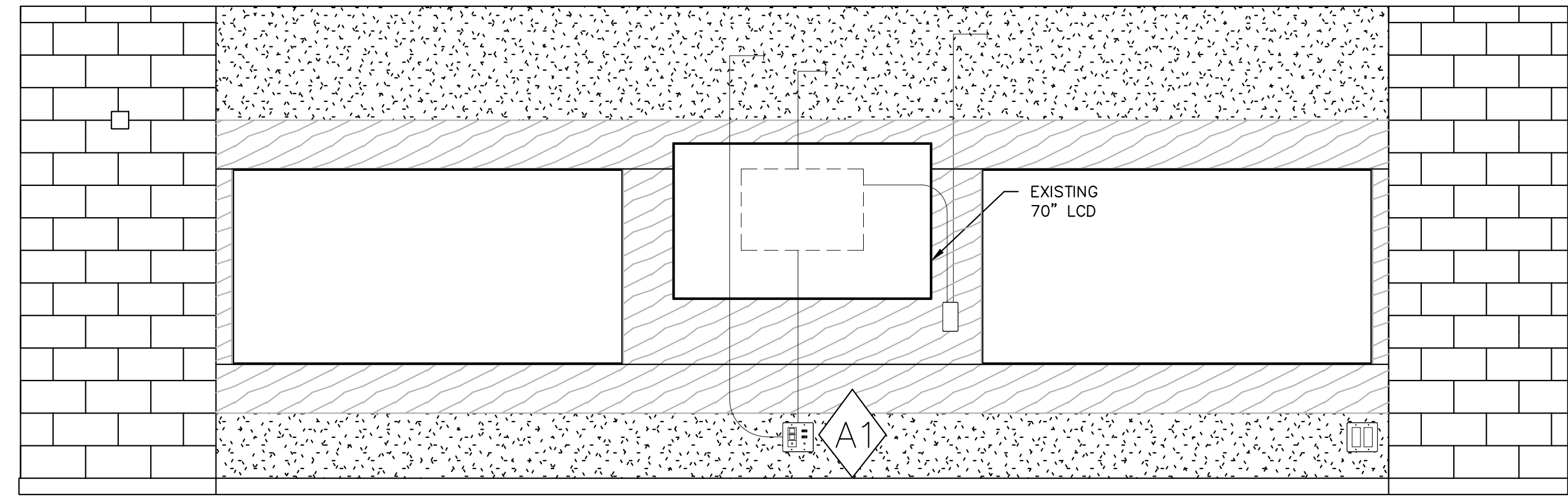
MARK	DESCRIPTION	MANUFACTURER	PART NO.
Ⓢ ₁	SPEAKER TYPE 1; DROP CEILING FOR AUDIO SYSTEM IN CLASSROOMS	ATLAS SOUND	FAP-40T
Ⓢ ₂	SPEAKER TYPE 2; OPEN CEILING SPEAKER FOR AUDIO SYSTEM IN CLASSROOMS. PENDANT STYLE	ATLAS SOUND	PM4FA-WH



Mark	Revision	Description
	ISSUED FOR BID	7/23/18

PARTS			CONNECTIVITY CODE		
QTY	DESCRIPTION	MANUFACTURER	PART #	QTY	DESCRIPTION
1	1-GANG SURFACE BOX	FSR	DSKB-1G	1	FACEPLATE
1	BLANK FOR FSR BOX	FSR	IPSB000D-BLK	1	DECORA/GFI OPENING
1	BLANK PLATE	LUTRON	CW1	1	HDMI PASS THRU
1	ELECTRICAL OUTLET	TOP GREENER	TU1152QCAC3	3	CAT-6 JACKS
1	2-GANG SURFACE BOX	FSR	DSKB-2G	1	CAT-6 SPKR-BLACK
1	BLANK FOR FSR BOX	FSR	IPSB000D-BLK	1	CAT-6 PATCH CORD
1	BLANK PLATE	LUTRON	CW2	1	CAT-6 RS-232-GRAY
1	CONTROLLER PIXIE	FRONT ROW	PIXE-DCM4-EXIST	1	CAT-6 PATCH CORD
1	PROVIDE NEW BUTTONS FROM FRONT ROW	AS REQUIRED	320-2110-006	1	CAT-6 PATCH CORD
1	CABLING	AS REQUIRED			
1	DECORAPLATE FOR AV	PANDUIT	CF64WH		
1	HDMI PASS THRU	PANDUIT	CMHDMWH		
2	AUDIO 3.5MM	PANDUIT	CM35MSCWHY		

PARTS			CONNECTIVITY CODE		
QTY	DESCRIPTION	MANUFACTURER	PART #	QTY	DESCRIPTION
1	120 VOLT POWER BOX	CONTRACTOR	CONTRACTOR	1	FACEPLATE
	SHALL HAVE TWO DECORA STYLE OPENINGS		MALE IEC-14	1	DECORA/GFI OPENING
	CONNECTOR FOR CONNECTION TO THE CORD TO THE WALL		LEVITON #AGTR1-W	1	HDMI PASS THRU
	EQUIP WITH "SO" TYPE CORD FOR CONNECTION TO WALL			1	CAT-6 JACKS
1	ANGLED METAL SUPPORT LEGRAND	RFB2GFI		1	CAT-6 SPKR-BLACK
1	6 POSITION PASS THRU	PANDUIT	CF66WH	1	CAT-6 PATCH CORD
1	CAT-6 SPKR-BLACK	PANDUIT	CJ688TGBL	1	CAT-6 RS-232-GRAY
1	CAT-6 CTRL-GRAY	PANDUIT	CJ688TGIG	1	CAT-6 PATCH CORD
1	CAT-6 PASS THRU	PANDUIT-WHITE	CC68BIW	1	CAT-6 PATCH CORD
1	CAT-6 PASS THRU	PANDUIT-BLUE	CC68BBU		
1	CAT-6 PASS THRU	PANDUIT-GREEN	CC68BGR		



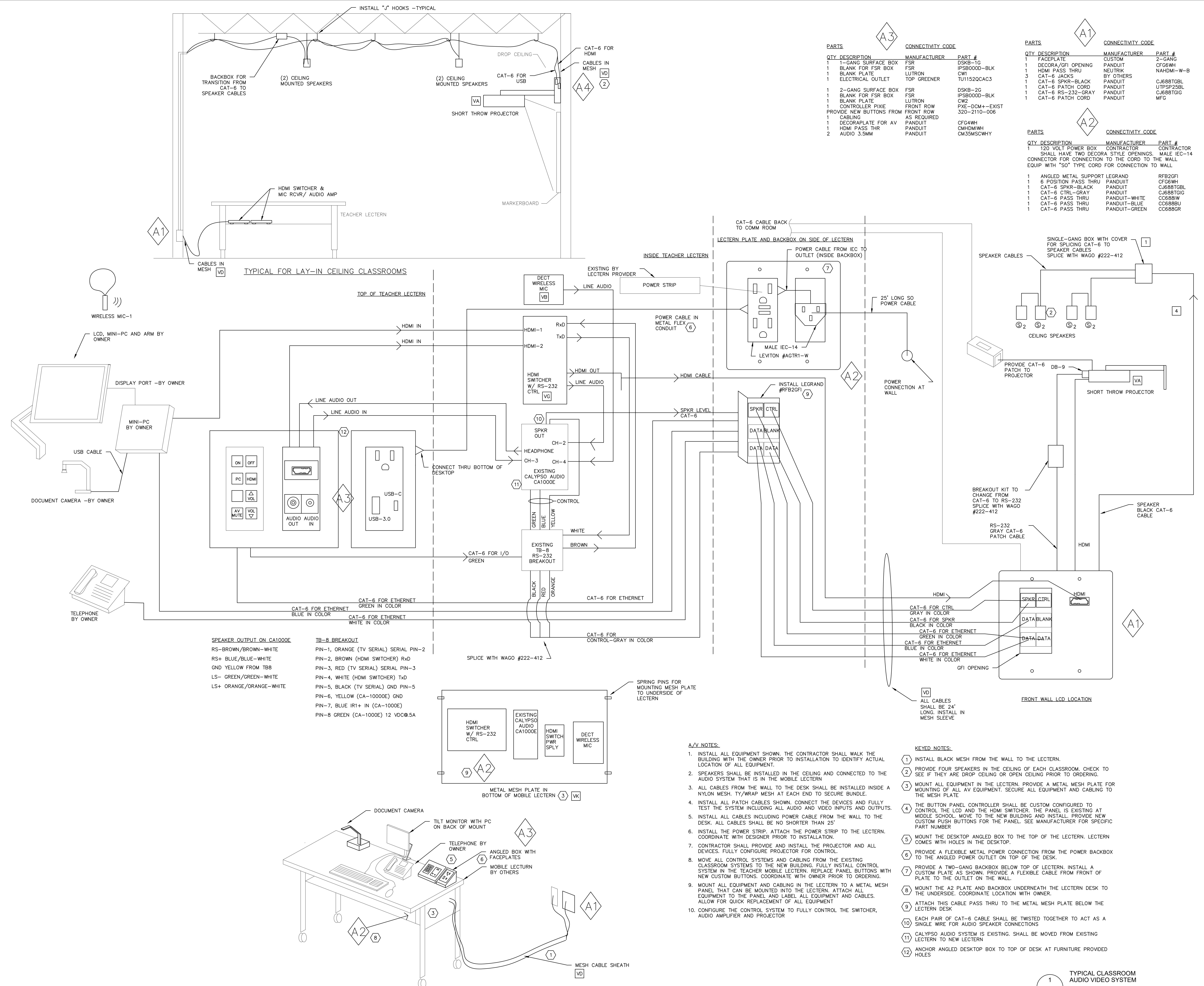
- SPEAKER OUTPUT ON CA1000E**
 RS- BROWN/BROWN-WHITE
 RS+ BLUE/BLUE-WHITE
 GND YELLOW FROM T8B
 LS- GREEN/GREEN-WHITE
 LS+ ORANGE/ORANGE-WHITE
- T8-B BREAKOUT**
 PIN-1, ORANGE (TV SERIAL) SERIAL PIN-2
 PIN-2, BROWN (HDMI SWITCHER) RxD
 PIN-3, RED (TV SERIAL) SERIAL PIN-3
 PIN-4, WHITE (HDMI SWITCHER) TxD
 PIN-5, BLACK (TV SERIAL) GND PIN-5
 PIN-6, YELLOW (CA-1000E) GND
 PIN-7, BLUE IR1+ IN (CA-1000E)
 PIN-8 GREEN (CA-1000E) 12 VDC@.5A

- AV NOTES:**
- INSTALL ALL EQUIPMENT SHOWN. THE CONTRACTOR SHALL WALK THE BUILDING WITH THE OWNER PRIOR TO INSTALLATION TO IDENTIFY ACTUAL LOCATION OF ALL EQUIPMENT.
 - SPEAKERS SHALL BE INSTALLED IN THE CEILING AND CONNECTED TO THE AUDIO SYSTEM THAT IS IN THE MOBILE LECTERN.
 - ALL CABLES FROM THE WALL TO THE LECTERN SHALL BE INSTALLED INSIDE A NYLON MESH, TY/WRAP MESH AT EACH END TO SECURE BUNDLE.
 - INSTALL ALL PATCH CABLES SHOWN. CONNECT THE DEVICES AND FULLY TEST THE SYSTEM INCLUDING ALL AUDIO AND VIDEO INPUTS AND OUTPUTS.
 - INSTALL ALL CABLES INCLUDING POWER CABLE FROM THE WALL TO THE DESK. ALL CABLES SHALL BE NO SHORTER THAN 25'
 - INSTALL THE POWER STRIP. ATTACH THE POWER STRIP TO THE LECTERN. COORDINATE WITH DESIGNER PRIOR TO INSTALLATION.
 - THE OWNER WILL BE MOVING THE LCD FROM THE EXISTING MIDDLE SCHOOL AND WILL BE DELIVERING IT TO THE NEW ROOM. CONTRACTOR SHALL MOUNT AND CONNECT EACH LCD TO THE MOUNT AND ALL DEVICES. FULLY CONFIGURE THE LCD FOR CONTROL. PROVIDE NEW LCD MOUNT. BACKBOX FOR MOUNTING OF THE LCD IS EXISTING.
 - MOVE ALL CONTROL SYSTEMS AND CABLING FROM THE EXISTING CLASSROOM SYSTEMS TO THE NEW BUILDING. FULLY INSTALL CONTROL SYSTEM IN THE TEACHER MOBILE LECTERN. REPLACE PANEL BUTTONS WITH NEW CUSTOM BUTTONS. COORDINATE WITH OWNER PRIOR TO ORDERING.
 - MOUNT ALL EQUIPMENT AND CABLING IN THE LECTERN TO A METAL MESH PANEL THAT CAN BE MOUNTED INTO THE LECTERN. ATTACH ALL EQUIPMENT TO THE PANEL AND LABEL ALL EQUIPMENT AND CABLES. ALLOW FOR QUICK REPLACEMENT OF ALL EQUIPMENT
 - CONFIGURE THE CONTROL SYSTEM TO FULLY CONTROL THE SWITCHER, AUDIO AMPLIFIER AND LCD

- KEYED NOTES:**
- INSTALL BLACK MESH FROM THE WALL TO THE LECTERN.
 - PROVIDE FOUR SPEAKERS IN THE CEILING OF EACH CLASSROOM. CHECK TO SEE IF THEY ARE DROP CEILING OR OPEN CEILING PRIOR TO ORDERING.
 - MOUNT ALL EQUIPMENT IN THE LECTERN. PROVIDE A METAL MESH PLATE FOR MOUNTING OF ALL AV EQUIPMENT. SECURE ALL EQUIPMENT AND CABLING TO THE MESH PLATE.
 - THE BUTTON PANEL CONTROLLER SHALL BE CUSTOM CONFIGURED TO CONTROL THE LCD AND THE HDMI SWITCHER. THE PANEL IS EXISTING AT MIDDLE SCHOOL. MOVE TO THE NEW BUILDING AND INSTALL. PROVIDE NEW CUSTOM PUSH BUTTONS FOR THE PANEL. SEE MANUFACTURER FOR SPECIFIC PART NUMBER
 - MOUNT THE DESKTOP ANGLED BOX TO THE TOP OF THE LECTERN. LECTERN COMES WITH HOLES IN THE DESKTOP.
 - PROVIDE A FLEXIBLE METAL POWER CONNECTION FROM THE POWER BACKBOX TO THE ANGLED POWER OUTLET ON TOP OF THE DESK.
 - PROVIDE A TWO-GANG BACKBOX BELOW TOP OF LECTERN. INSTALL A CUSTOM PLATE AS SHOWN. PROVIDE A FLEXIBLE CABLE FROM FRONT OF PLATE TO THE OUTLET ON THE WALL.
 - MOUNT THE A2 PLATE AND BACKBOX UNDERNEATH THE LECTERN DESK TO THE UNDERSIDE. COORDINATE LOCATION WITH OWNER.
 - ATTACH THIS CABLE PASS THRU TO THE METAL MESH PLATE BELOW THE LECTERN DESK
 - EACH PAIR OF CAT-6 CABLE SHALL BE TWISTED TOGETHER TO ACT AS A SINGLE WIRE FOR AUDIO SPEAKER CONNECTIONS
 - CALYPSO AUDIO SYSTEM IS EXISTING. SHALL BE MOVED FROM EXISTING LECTERN TO NEW LECTERN
 - ANCHOR ANGLED DESKTOP BOX TO TOP OF DESK AT FURNITURE PROVIDED HOLES

Mark	Revision	Description
	ISSUED FOR BID	7/23/18

PORTAGE PUBLIC SCHOOLS
NORTH MIDDLE SCHOOL
CLASSROOM AUDIO/VIDEO
 PORTAGE, MICHIGAN



PARTS A3

QTY	DESCRIPTION	MANUFACTURER	PART #
1	1-GANG SURFACE BOX	FSR	DSKB-1G
1	BLANK FOR FSR BOX	FSR	IPS8000-BLK
1	BLANK PLATE	LUTRON	CW1
1	ELECTRICAL OUTLET	TOP GREENER	TU1152QCAC3
1	2-GANG SURFACE BOX	FSR	DSKB-2G
1	BLANK FOR FSR BOX	FSR	IPS8000-BLK
1	BLANK PLATE	LUTRON	CW2
1	CONTROLLER PINE	FRONT ROW	FXE-DCM+-EXIST
1	CONTROLLER PINE	FRONT ROW	320-2110-006
1	CABLING	AS REQUIRED	
1	DECORAPLATE FOR AV	PANDUIT	
1	HDMI PASS THR	PANDUIT	
2	AUDIO 3.5MM	PANDUIT	

PARTS A1

QTY	DESCRIPTION	MANUFACTURER	PART #
1	FACEPLATE	CUSTOM	2-GANG
1	DECORA/GFI OPENING	PANDUIT	CF66WH
1	HDMI PASS THRU	NEUTRIK	NAHDMI-W-B
3	CAT-6 JACKS	BY OTHERS	
1	CAT-6 SPKR-BLACK	PANDUIT	CJ688TGBL
1	CAT-6 PATCH CORD	PANDUIT	UTPSP25BL
1	CAT-6 RS-232-GRAY	PANDUIT	CJ688TGIG
1	CAT-6 PATCH CORD	PANDUIT	MFG

PARTS A2

QTY	DESCRIPTION	MANUFACTURER	PART #
1	120 VOLT POWER BOX	CONTRACTOR	CONTRACTOR
SHALL HAVE TWO DECORA STYLE OPENINGS. MALE IEC-14 CONNECTOR FOR CONNECTION TO THE CORD TO THE WALL EQUIP WITH "SO" TYPE CORD FOR CONNECTION TO WALL			
1	ANGLED METAL SUPPORT LEGRAND	CF66WH	RFB2GFI
1	6 POSITION PASS THRU	PANDUIT	CF66WH
1	CAT-6 SPKR-BLACK	PANDUIT	CJ688TGBL
1	CAT-6 CTRL-GRAY	PANDUIT	CJ688TGIG
1	CAT-6 PASS THRU	PANDUIT-WHITE	C0688IW
1	CAT-6 PASS THRU	PANDUIT-BLUE	C0688BU
1	CAT-6 PASS THRU	PANDUIT-GREEN	C0688GR

- SPEAKER OUTPUT ON CA1000E**
- RS- BROWN/BROWN-WHITE
 - RS+ BLUE/BLUE-WHITE
 - GND YELLOW FROM T8B
 - LS- GREEN/GREEN-WHITE
 - LS+ ORANGE/ORANGE-WHITE
- TR-8 BREAKOUT**
- PIN-1, ORANGE (TV SERIAL) SERIAL PIN-2
 - PIN-2, BROWN (HDMI SWITCHER) RxD
 - PIN-3, RED (TV SERIAL) SERIAL PIN-3
 - PIN-4, WHITE (HDMI SWITCHER) TxD
 - PIN-5, BLACK (TV SERIAL) GND PIN-5
 - PIN-6, YELLOW (CA-1000E) GND
 - PIN-7, BLUE IR+ IN (CA-1000E)
 - PIN-8 GREEN (CA-1000E) 12 VDC@.5A

- AV NOTES:**
- INSTALL ALL EQUIPMENT SHOWN. THE CONTRACTOR SHALL WALK THE BUILDING WITH THE OWNER PRIOR TO INSTALLATION TO IDENTIFY ACTUAL LOCATION OF ALL EQUIPMENT.
 - SPEAKERS SHALL BE INSTALLED IN THE CEILING AND CONNECTED TO THE AUDIO SYSTEM THAT IS IN THE MOBILE LECTERN.
 - ALL CABLES FROM THE WALL TO THE DESK SHALL BE INSTALLED INSIDE A NYLON MESH, TY/WRAP MESH AT EACH END TO SECURE BUNDLE.
 - INSTALL ALL PATCH CABLES SHOWN. CONNECT THE DEVICES AND FULLY TEST THE SYSTEM INCLUDING ALL AUDIO AND VIDEO INPUTS AND OUTPUTS.
 - INSTALL ALL CABLES INCLUDING POWER CABLE FROM THE WALL TO THE DESK. ALL CABLES SHALL BE NO SHORTER THAN 25'
 - INSTALL THE POWER STRIP. ATTACH THE POWER STRIP TO THE LECTERN. COORDINATE WITH DESIGNER PRIOR TO INSTALLATION.
 - CONTRACTOR SHALL PROVIDE AND INSTALL THE PROJECTOR AND ALL DEVICES. FULLY CONFIGURE PROJECTOR FOR CONTROL.
 - MOVE ALL CONTROL SYSTEMS AND CABLING FROM THE EXISTING CLASSROOM SYSTEMS TO THE NEW BUILDING. FULLY INSTALL CONTROL SYSTEM IN THE TEACHER MOBILE LECTERN. REPLACE PANEL BUTTONS WITH NEW CUSTOM BUTTONS. COORDINATE WITH OWNER PRIOR TO ORDERING.
 - MOUNT ALL EQUIPMENT AND CABLING IN THE LECTERN TO A METAL MESH PLATE THAT CAN BE MOUNTED INTO THE LECTERN. ATTACH ALL EQUIPMENT TO THE PANEL AND LABEL ALL EQUIPMENT AND CABLES. ALLOW FOR QUICK REPLACEMENT OF ALL EQUIPMENT.
 - CONFIGURE THE CONTROL SYSTEM TO FULLY CONTROL THE SWITCHER, AUDIO AMPLIFIER AND PROJECTOR.

- KEYED NOTES:**
- INSTALL BLACK MESH FROM THE WALL TO THE LECTERN.
 - PROVIDE FOUR SPEAKERS IN THE CEILING OF EACH CLASSROOM. CHECK TO SEE IF THEY ARE DROP CEILING OR OPEN CEILING PRIOR TO ORDERING.
 - MOUNT ALL EQUIPMENT IN THE LECTERN. PROVIDE A METAL MESH PLATE FOR MOUNTING OF ALL AV EQUIPMENT. SECURE ALL EQUIPMENT AND CABLING TO THE MESH PLATE.
 - THE BUTTON PANEL CONTROLLER SHALL BE CUSTOM CONFIGURED TO CONTROL THE LCD AND THE HDMI SWITCHER. THE PANEL IS EXISTING AT MIDDLE SCHOOL. MOVE TO THE NEW BUILDING AND INSTALL. PROVIDE NEW CUSTOM PUSH BUTTONS FOR THE PANEL. SEE MANUFACTURER FOR SPECIFIC PART NUMBER.
 - MOUNT THE DESKTOP ANGLED BOX TO THE TOP OF THE LECTERN. LECTERN COMES WITH HOLES IN THE DESKTOP.
 - PROVIDE A FLEXIBLE METAL POWER CONNECTION FROM THE POWER BACKBOX TO THE ANGLED POWER OUTLET ON TOP OF THE DESK.
 - PROVIDE A TWO-GANG BACKBOX BELOW TOP OF LECTERN. INSTALL A CUSTOM PLATE AS SHOWN. PROVIDE A FLEXIBLE CABLE FROM FRONT OF PLATE TO THE OUTLET ON THE WALL.
 - MOUNT THE A2 PLATE AND BACKBOX UNDERNEATH THE LECTERN DESK TO THE UNDERSIDE. COORDINATE LOCATION WITH OWNER.
 - ATTACH THIS CABLE PASS THRU TO THE METAL MESH PLATE BELOW THE LECTERN DESK.
 - EACH PAIR OF CAT-6 CABLE SHALL BE TWISTED TOGETHER TO ACT AS A SINGLE WIRE FOR AUDIO SPEAKER CONNECTIONS.
 - CALYPSO AUDIO SYSTEM IS EXISTING. SHALL BE MOVED FROM EXISTING LECTERN TO NEW LECTERN.
 - ANCHOR ANGLED DESKTOP BOX TO TOP OF DESK AT FURNITURE PROVIDED HOLES.

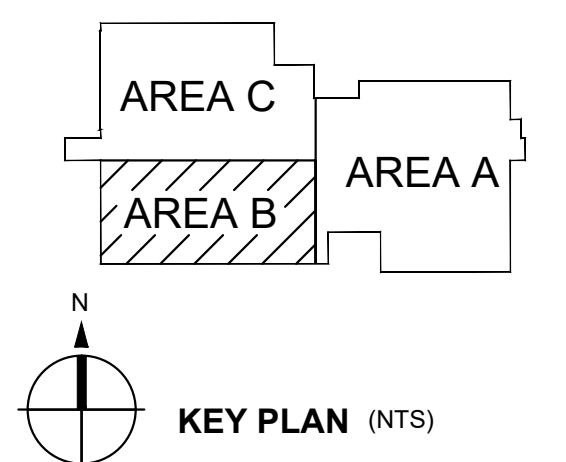
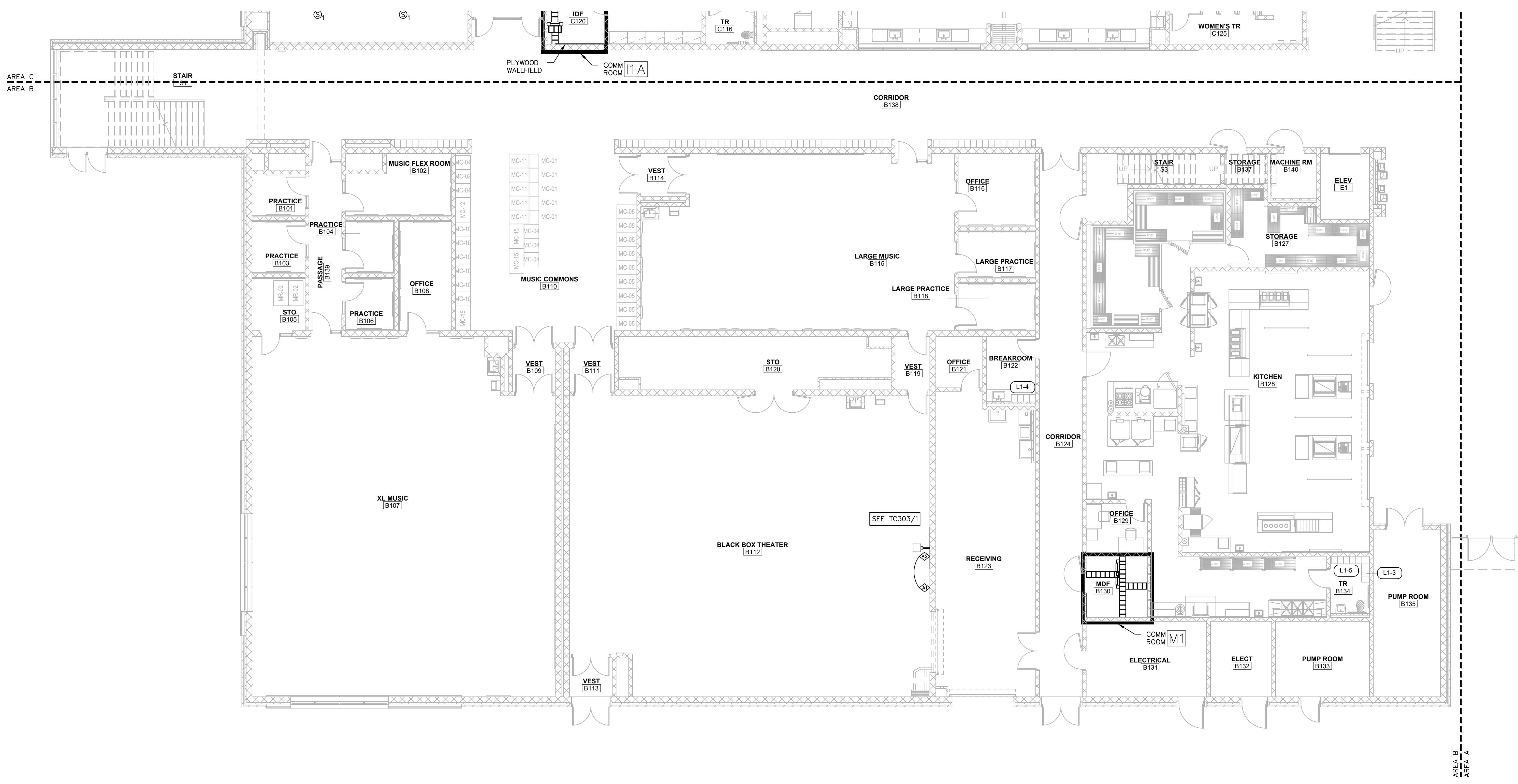
Mark	Revision	Description
	ISSUED FOR BID	7/23/18

PORTAGE PUBLIC SCHOOLS
NORTH MIDDLE SCHOOL
CLASSROOM AUDIO/VIDEO
 PORTAGE, MICHIGAN

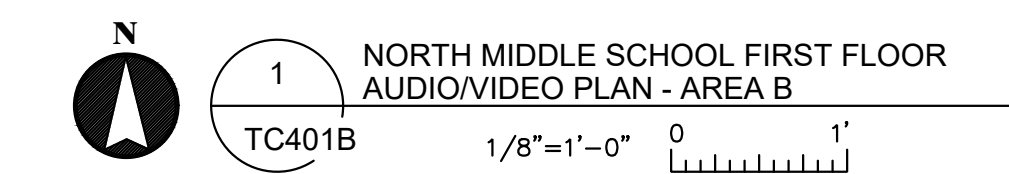
1
 TC303
 TYPICAL CLASSROOM AUDIO VIDEO SYSTEM

GENERAL AV NOTES

1. AV CONTRACTOR SHALL INSTALL ANY PASS-THRU'S REQUIRED FOR ROUTING CABLES AROUND THE BUILDING. FIRESTOP ALL PASS-THRU'S TO MEET APPLICABLE CODES.
2. CONTRACTOR SHALL COMPLETE A WALK-THRU OF THE SITE DURING CONSTRUCTION AND SHALL VERIFY ALL RACEWAYS ARE AS NOTED.
3. ALL CABLES SHALL BE SUPPORTED ABOVE THE DROP CEILING BY J-HOOKS. HOOKS SHALL BE LOCATED NO LESS THAN EVERY 5 FEET.
4. COORDINATE SPEAKERS TYPES WITH CEILINGS IN EACH ROOM.



KEY PLAN (NTS)



1 NORTH MIDDLE SCHOOL FIRST FLOOR AUDIO/VIDEO PLAN - AREA B
1/8"=1'-0"

Commtech Design
6581 BELDING RD NE STE 101
ROCKFORD, MICHIGAN 49341
WWW.COMMTECHDESIGN.COM

Mark	Revision	Description
	ISSUED FOR BID	7/23/18

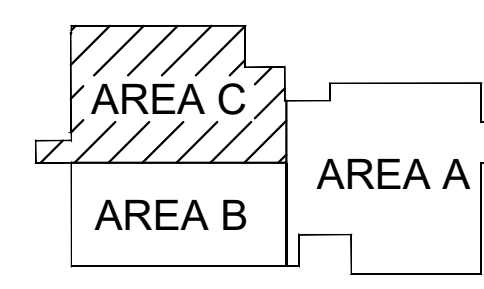
PORTAGE PUBLIC SCHOOLS
NORTH MIDDLE SCHOOL
CLASSROOM AUDIO/VIDEO
PORTAGE, MICHIGAN

These drawings are the Property of the Designer and are not to be re-used or reproduced without the designer's permission. CommTech Design

Date 7/23/2018
Project 1253_01
Sheet **TC401B**
NORTH MIDDLE SCHOOL
FIRST FLOOR AV/
PLAN - AREA B

GENERAL AV NOTES

1. AV CONTRACTOR SHALL INSTALL ANY PASS-THRU'S REQUIRED FOR ROUTING CABLES AROUND THE BUILDING. FIRESTOP ALL PASS-THRU'S TO MEET APPLICABLE CODES.
2. CONTRACTOR SHALL COMPLETE A WALK-THRU OF THE SITE DURING CONSTRUCTION AND SHALL VERIFY ALL RACEWAYS ARE AS NOTED.
3. ALL CABLES SHALL BE SUPPORTED ABOVE THE DROP CEILING BY J-HOOKS. HOOKS SHALL BE LOCATED NO LESS THAN EVERY 5 FEET.
4. COORDINATE SPEAKERS TYPES WITH CEILINGS IN EACH ROOM.



KEY PLAN (NTS)

1
NORTH MIDDLE SCHOOL FIRST FLOOR
AUDIO/VIDEO PLAN - AREA C
TC401C
1/8"=1'-0"

Commtech Design
6561 BELDING RD NE STE 101
ROCKFORD, MICHIGAN 49341
WWW.COMMTECHDESIGN.COM

Mark	Revision	Description
	ISSUED FOR BID	7/23/18

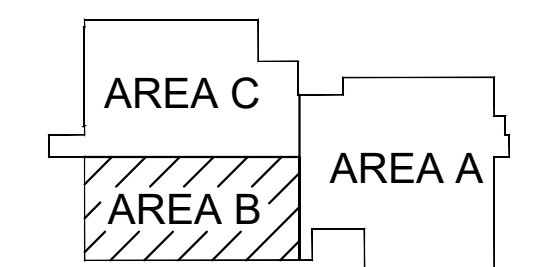
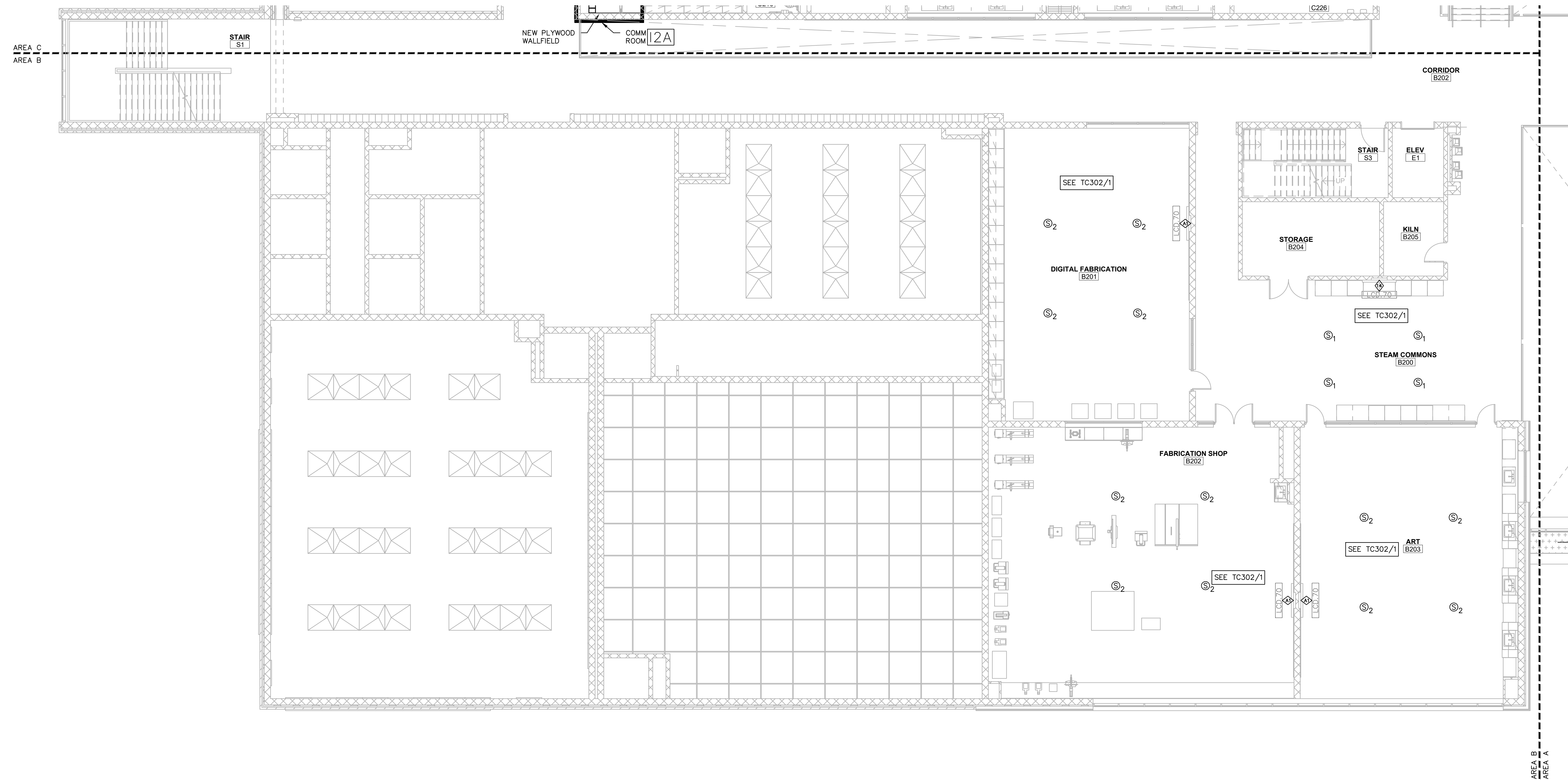
PORTAGE PUBLIC SCHOOLS
NORTH MIDDLE SCHOOL
CLASSROOM AUDIO/VIDEO
PORTAGE, MICHIGAN

These drawings are the Property of the Designer and are not to be re-used or reproduced without the designer's permission.
Comm Tech Design

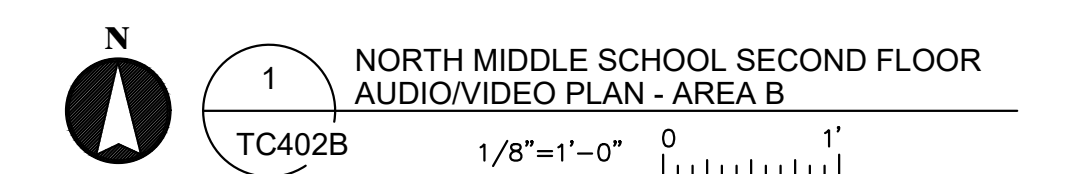
Date: 7/23/2018
Project: 1253_01
Sheet: **TC401C**
NORTH MIDDLE SCHOOL
FIRST FLOOR AV/
PLAN - AREA C

GENERAL AV NOTES

1. AV CONTRACTOR SHALL INSTALL ANY PASS-THRU'S REQUIRED FOR ROUTING CABLES AROUND THE BUILDING. FIRESTOP ALL PASS-THRU'S TO MEET APPLICABLE CODES.
2. CONTRACTOR SHALL COMPLETE A WALK-THRU OF THE SITE DURING CONSTRUCTION AND SHALL VERIFY ALL RACEWAYS ARE AS NOTED.
3. ALL CABLES SHALL BE SUPPORTED ABOVE THE DROP CEILING BY J-HOOKS. HOOKS SHALL BE LOCATED NO LESS THAN EVERY 5 FEET.
4. COORDINATE SPEAKERS TYPES WITH CEILINGS IN EACH ROOM.



KEY PLAN (NTS)



Commtech Design
 6561 BELDING RD NE STE 101
 ROCKFORD, MICHIGAN 49341
 WWW.COMMTECHDESIGN.COM

Mark	Revision	Description
	1	ISSUED FOR BID 7/23/18

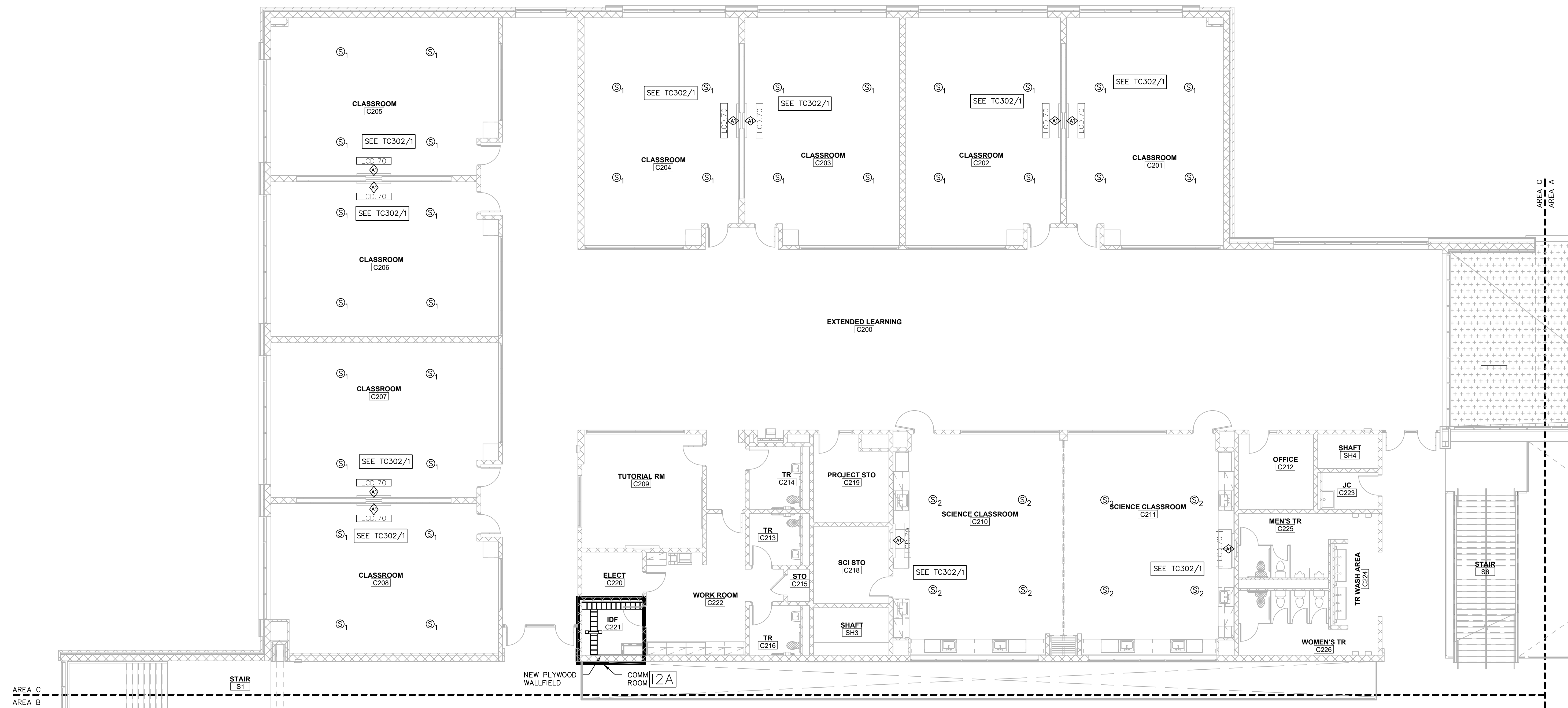
PORTAGE PUBLIC SCHOOLS
 NORTH MIDDLE SCHOOL
 CLASSROOM AUDIO/VIDEO
 PORTAGE, MICHIGAN

These drawings are the Property of the Designer and are not to be re-used or reproduced without the designer's permission.
 CommTech Design

Date 7/23/2018
 Project 1253_01
 Sheet **TC402B**
 NORTH MIDDLE SCHOOL
 SECOND FLOOR
 AV PLAN AREA - B

GENERAL AV NOTES

1. AV CONTRACTOR SHALL INSTALL ANY PASS-THRU'S REQUIRED FOR ROUTING CABLES AROUND THE BUILDING. FIRESTOP ALL PASS-THRU'S TO MEET APPLICABLE CODES.
2. CONTRACTOR SHALL COMPLETE A WALK-THRU OF THE SITE DURING CONSTRUCTION AND SHALL VERIFY ALL RACEWAYS ARE AS NOTED.
3. ALL CABLES SHALL BE SUPPORTED ABOVE THE DROP CEILING BY J-HOOKS. HOOKS SHALL BE LOCATED NO LESS THAN EVERY 5 FEET.
4. COORDINATE SPEAKERS TYPES WITH CEILINGS IN EACH ROOM.

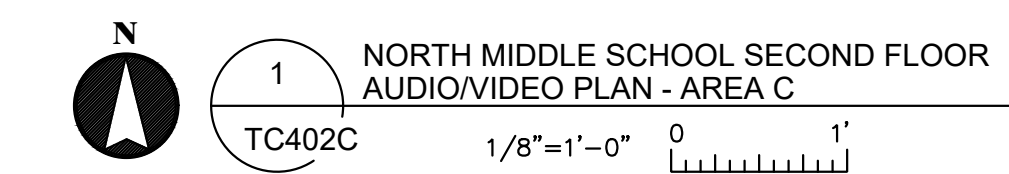
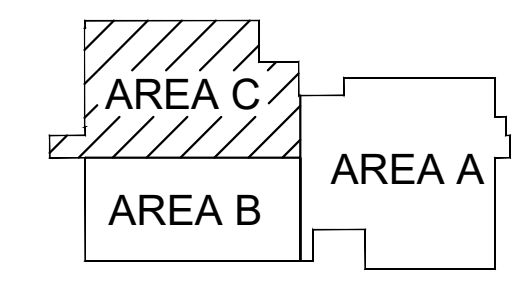


Mark	Revision	Description
	ISSUED FOR BID	7/23/18

PORTAGE PUBLIC SCHOOLS
 NORTH MIDDLE SCHOOL
 CLASSROOM AUDIO/VIDEO
 PORTAGE, MICHIGAN

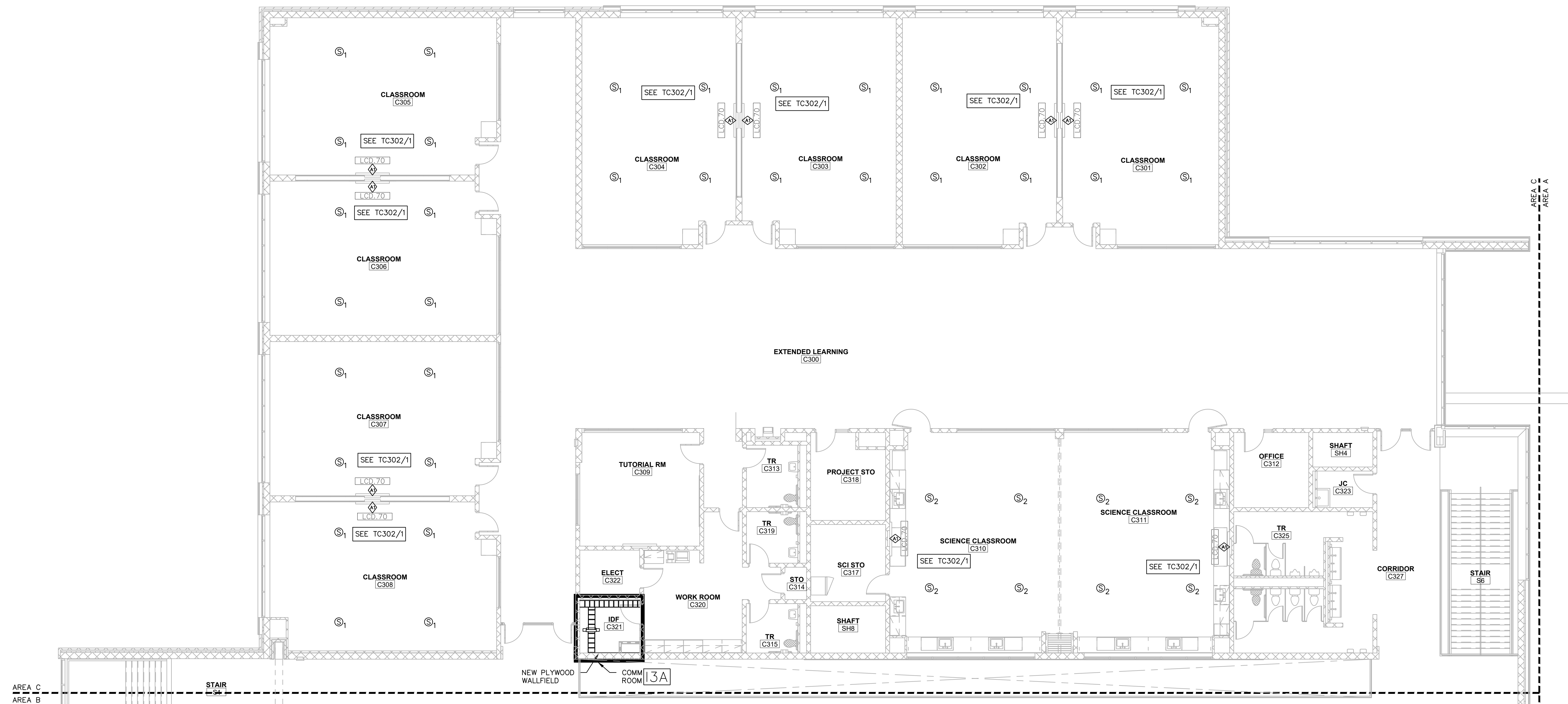
These drawings are the Property of the Designer and are not to be re-used or reproduced without the Designer's permission. Commtech Design

Date 7/23/2018
 Project 1253_01
 Sheet **TC402C**
 NORTH MIDDLE SCHOOL
 SECOND FLOOR
 AV PLAN AREA - C



GENERAL AV NOTES

1. AV CONTRACTOR SHALL INSTALL ANY PASS-THRU'S REQUIRED FOR ROUTING CABLES AROUND THE BUILDING. FIRESTOP ALL PASS-THRU'S TO MEET APPLICABLE CODES.
2. CONTRACTOR SHALL COMPLETE A WALK-THRU OF THE SITE DURING CONSTRUCTION AND SHALL VERIFY ALL RACEWAYS ARE AS NOTED.
3. ALL CABLES SHALL BE SUPPORTED ABOVE THE DROP CEILING BY J-HOOKS. HOOKS SHALL BE LOCATED NO LESS THAN EVERY 5 FEET.
4. COORDINATE SPEAKERS TYPES WITH CEILINGS IN EACH ROOM.

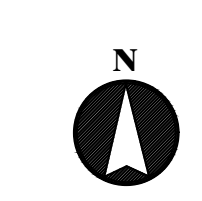
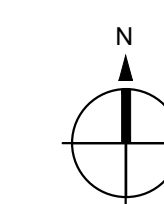
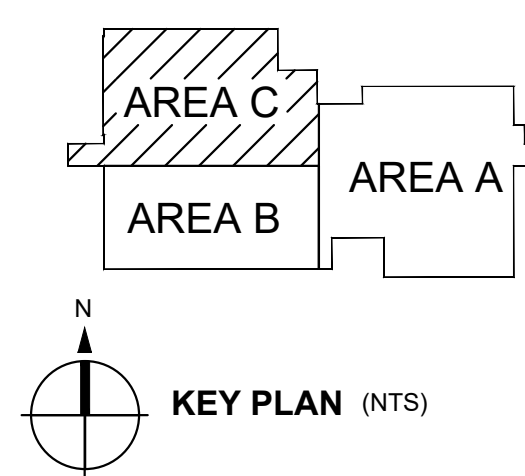


Mark	Revision	Description
	ISSUED FOR BID	7/23/18

PORTAGE PUBLIC SCHOOLS
NORTH MIDDLE SCHOOL
CLASSROOM AUDIO/VIDEO
 PORTAGE, MICHIGAN

These drawings are the Property of the Designer and are not to be re-used or reproduced without the designer's permission.
 CommTech Design

Date	7/23/2018
Project	1253_01
Sheet	TC403C
NORTH MIDDLE SCHOOL THIRD FLOOR AV PLAN AREA - C	



1 NORTH MIDDLE SCHOOL THIRD FLOOR
 AUDIO/VIDEO PLAN - AREA C
 1/8"=1'-0" 0' 1'