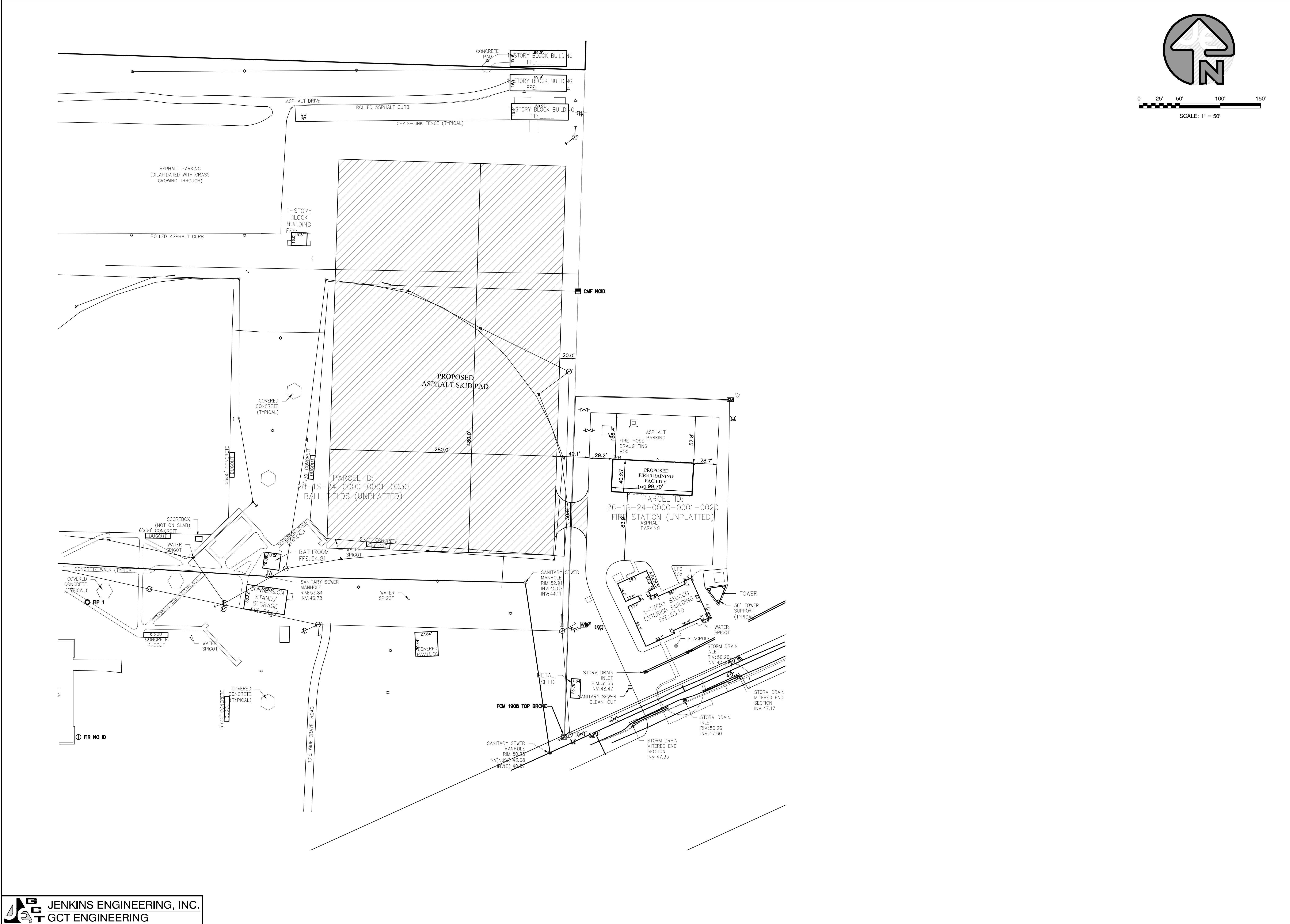
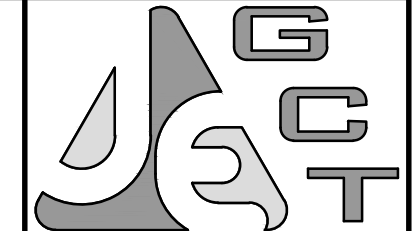


File: D:\Box Sync\Projects\2014\14-16-FWB General Engineering Services\14-16-010 Fire District Training Facility\Drawings\14-16-010 Fire District Training Facility.DWG Last Save: 1/11/2017 1:45 PM Last saved by: Mecotka
Last Plotted by: Marek Sconka Plot Style: --- Plot Scale: 1:2.5649 Plot Date: 1/11/2017 3:16 PM Plotter used: None



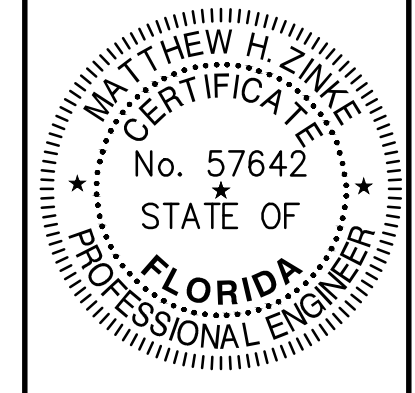
0 25' 50' 100' 150'
SCALE: 1" = 50'

JENKINS ENGINEERING, INC.
GCT ENGINEERING



JENKINS ENGINEERING, INC.
1234 AIRPORT ROAD, SUITE 126
NICEVILLE, FLORIDA 32541
PHONE 850.837.2448
FAX 850.837.2450

JEICIVIL.COM
C.O.A. NO. 9927 - L.B. NO. 8081



MATTHEW H. ZINKE, P.E.
FL. REGISTRATION NO. 57642

REV	DATE	DESCRIPTION
1		
2		
3		
4		
5		
6		
7		
8		

City of Fort Walton Beach
Fire District Training Facility
CITY OF FORT WALTON BEACH, FLORIDA
PRELIMINARY SITE PLAN
NOT VALID UNLESS BEARING ENGINEER'S ORIGINAL SIGNATURE

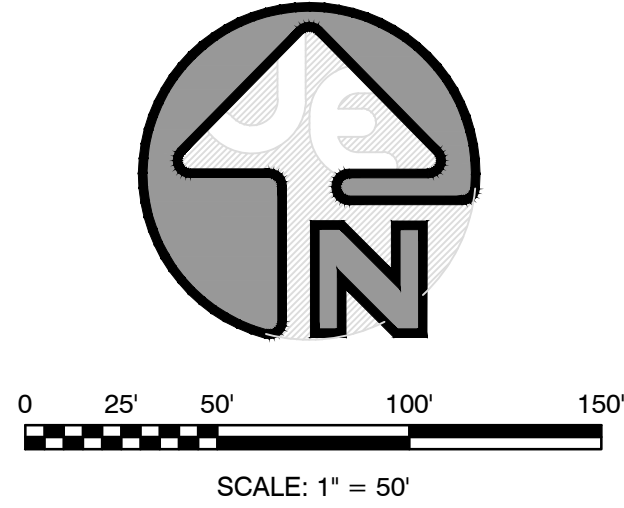
JOB: 14-16-010
DATE: 01-11-2017
DESIGNED: MS/MZ
DRAWN: MS

BAR IS ONE INCH ON ORIGINAL
IF NOT ONE INCH ON THIS SHEET
ADJUST SCALES ACCORDINGLY

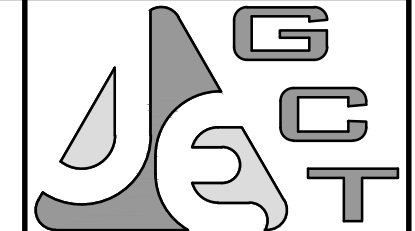
DRAWING NUMBER
1 OF 1

SHEET NUMBER
C01

File: D:\Box Sync\Projects\2014\14-16 FWB General Engineering Services\14-16-010 Fire District Training Facility\Drawings\14-16-010 Fire District Training Facility.DWG Last Save: 1/11/2017 1:45 PM Last saved by: Mecotka
 Last Plotted By: Marek Sconka Plot Style: --- Plot Scale: 1:2,5849 Plot Date: 1/11/2017 3:17 PM Plotter used: None



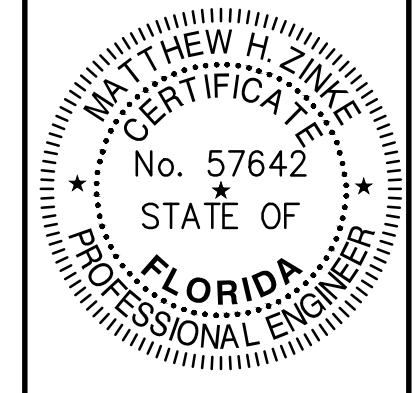
JENKINS ENGINEERING, INC.
GCT ENGINEERING



JENKINS ENGINEERING, INC.
 1234 AIRPORT ROAD, SUITE 128
 DESTIN, FLORIDA 32541
 PHONE 850.837.2448
 FAX 850.837.2450

121 HART STREET
 NICEVILLE, FLORIDA 32578
 PHONE 850.678.5141
 FAX 850.729.2460

JECIVIL.COM
 C.O.A. NO. 9927 - L.B. NO. 8081



MATTHEW H. ZINKE, P.E.
 FL. REGISTRATION NO. 57642

REV	DATE	DESCRIPTION
1		
2		
3		
4		
5		
6		
7		
8		

City of Fort Walton Beach
Fire District Training Facility
 CITY OF FORT WALTON BEACH, FLORIDA
PRELIMINARY SITE PLAN - AERIAL OVERLAY
NOT VALID UNLESS BEARING ENGINEER'S ORIGINAL SIGNATURE

JOB: 14-16-010
 DATE: 01-11-2017
 DESIGNED: MS/MZ
 DRAWN: MS

BAR IS ONE INCH ON ORIGINAL
 1"
 IF NOT ONE INCH ON THIS SHEET
 ADJUST SCALES ACCORDINGLY

DRAWING NUMBER
 1 OF 1

SHEET NUMBER
C01