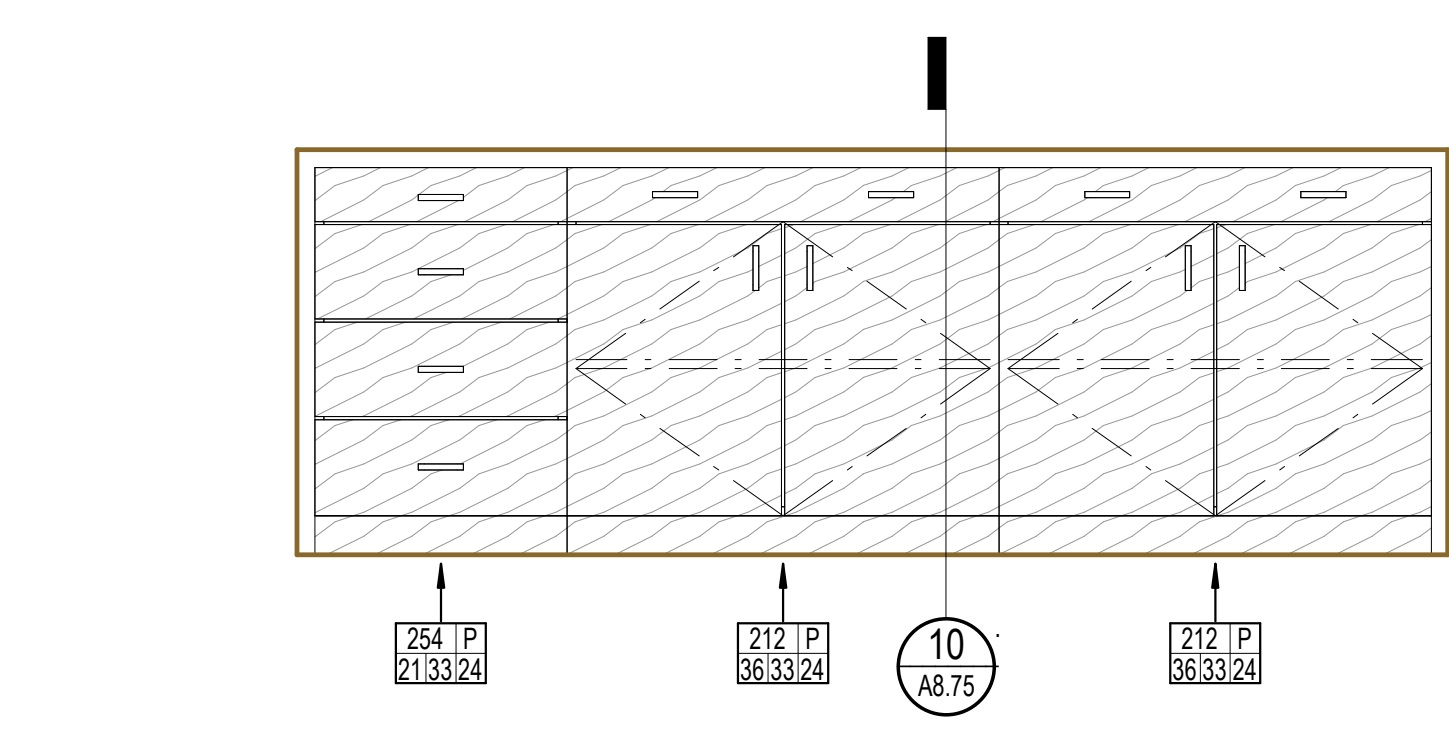
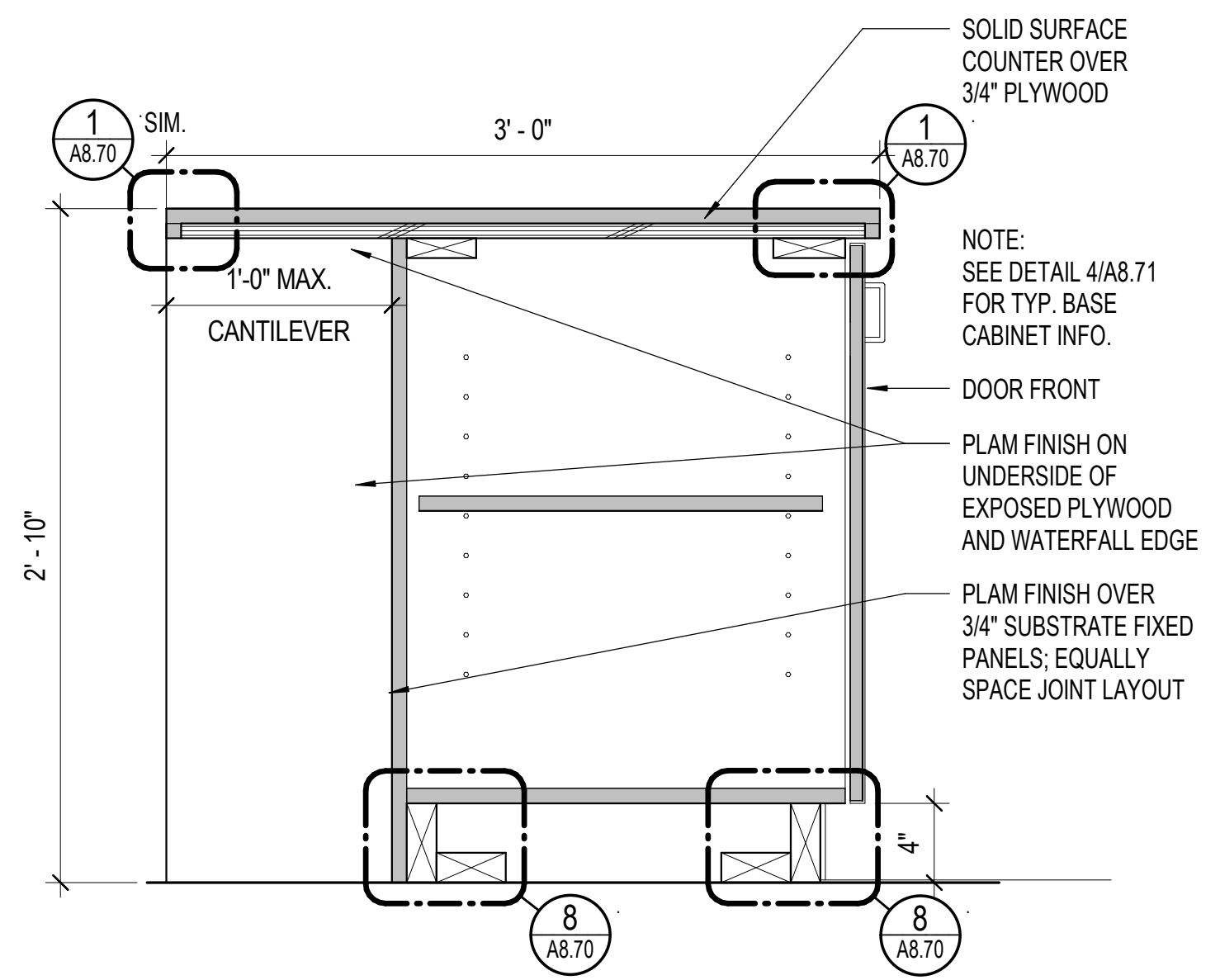


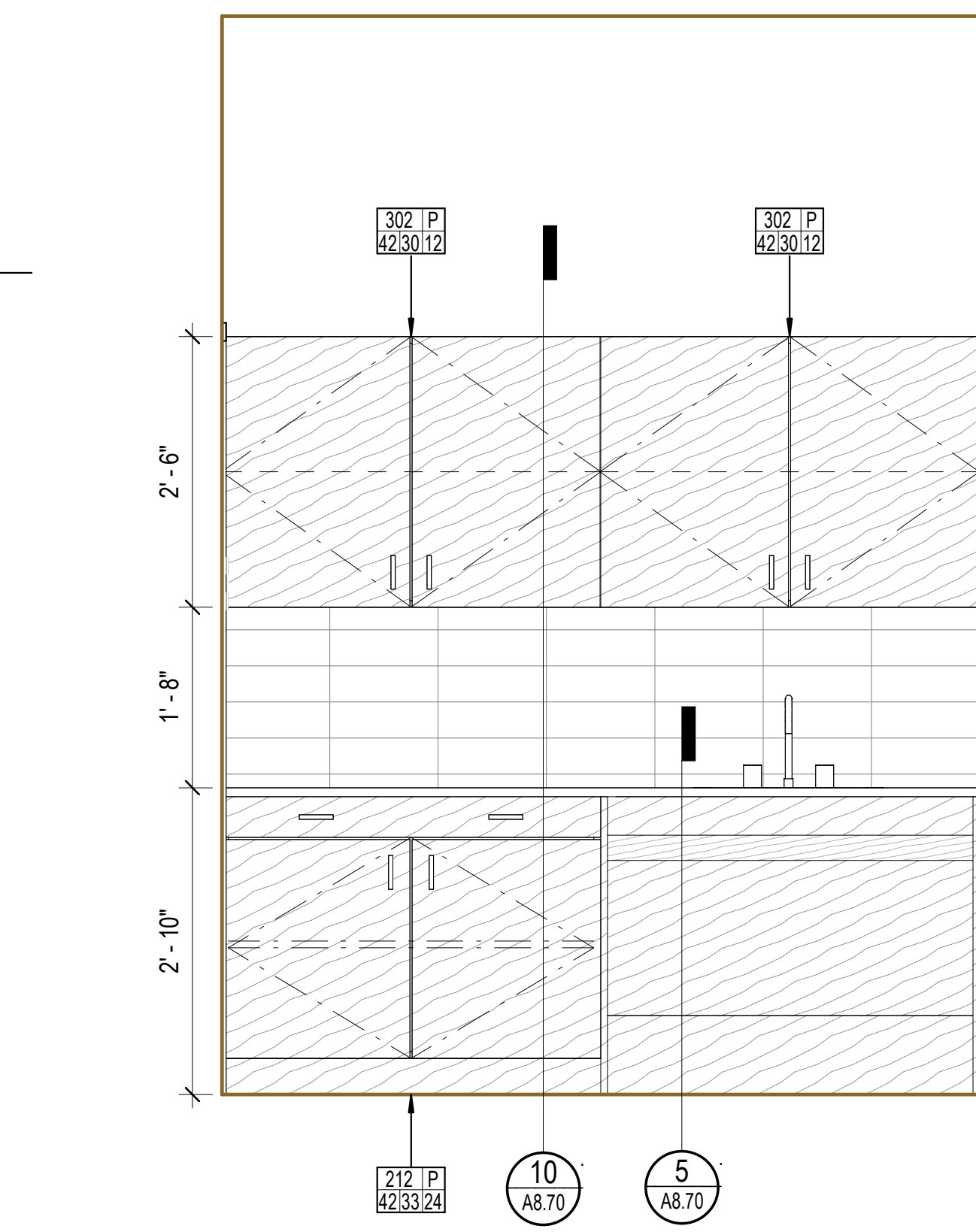
11 CASEWORK KEY LEGEND
A8.75 3/4" = 1'-0"



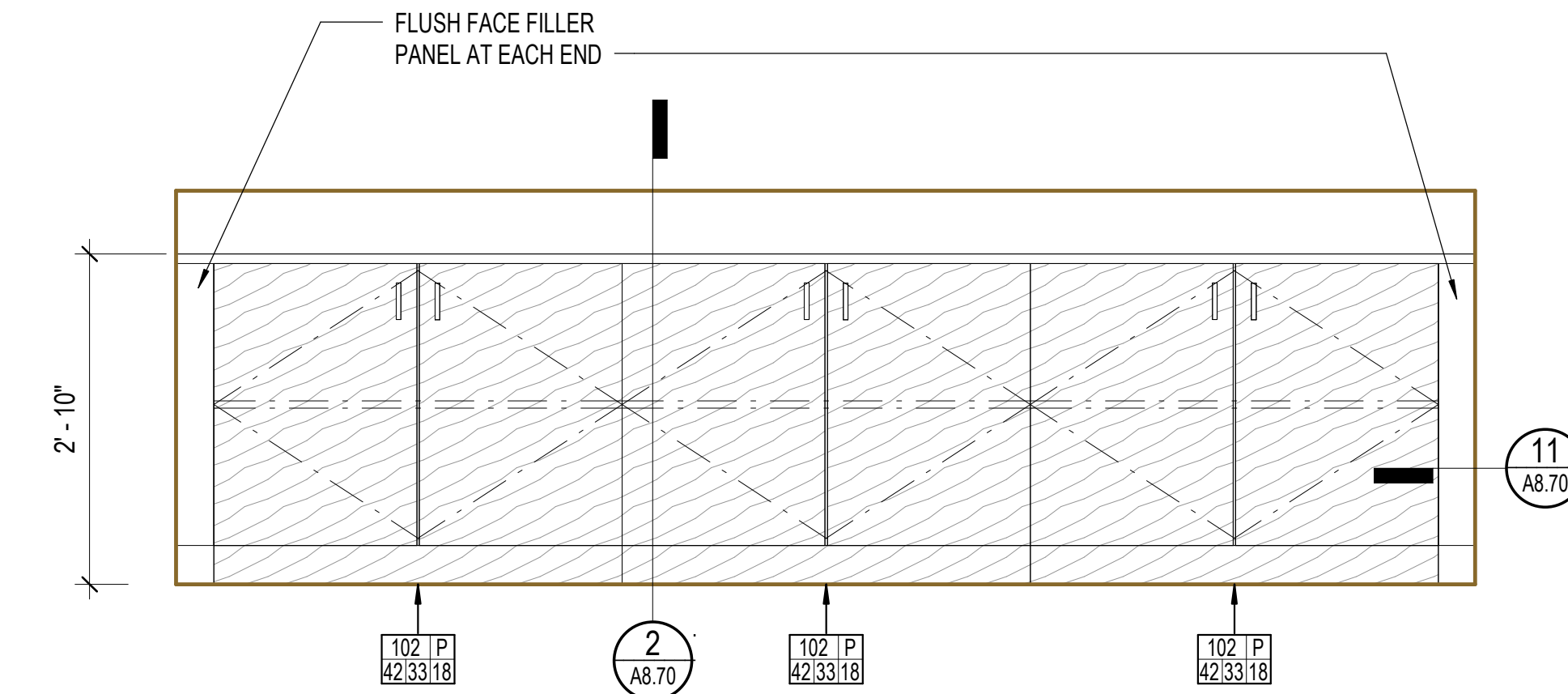
12 KITCHEN ISLAND - WEST
A8.75 3/4" = 1'-0"



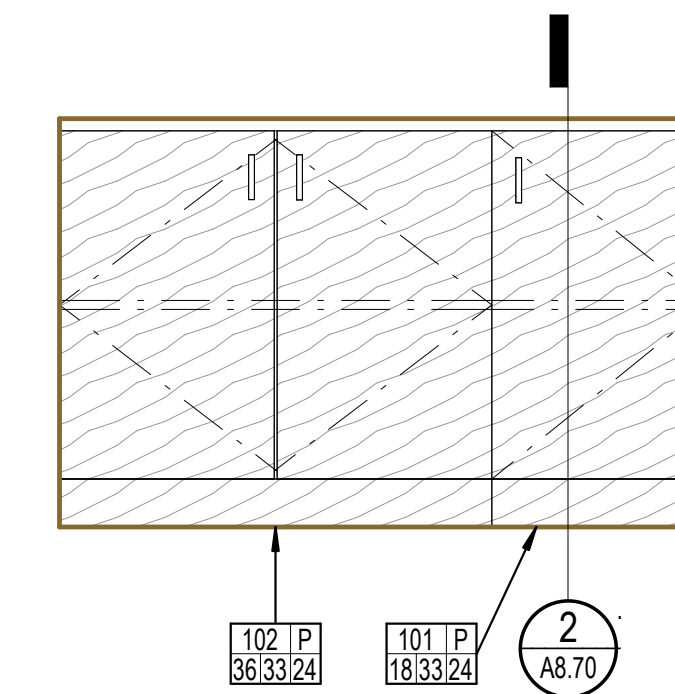
10 KITCHEN ISLAND
A8.75 1 1/2" = 1'-0"



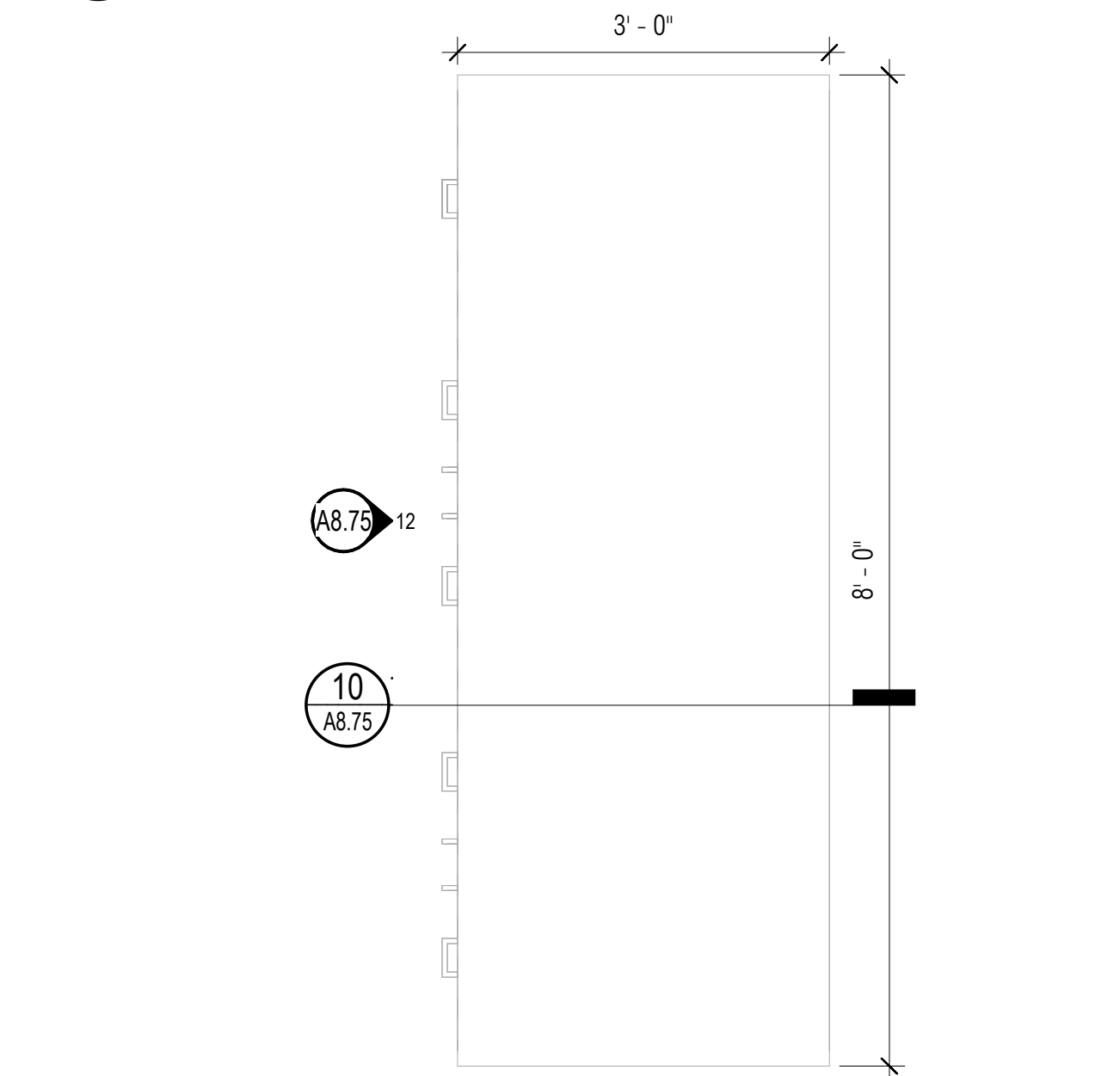
4 TECH SERVICES KITCHENETTE
A8.75 3/4" = 1'-0"



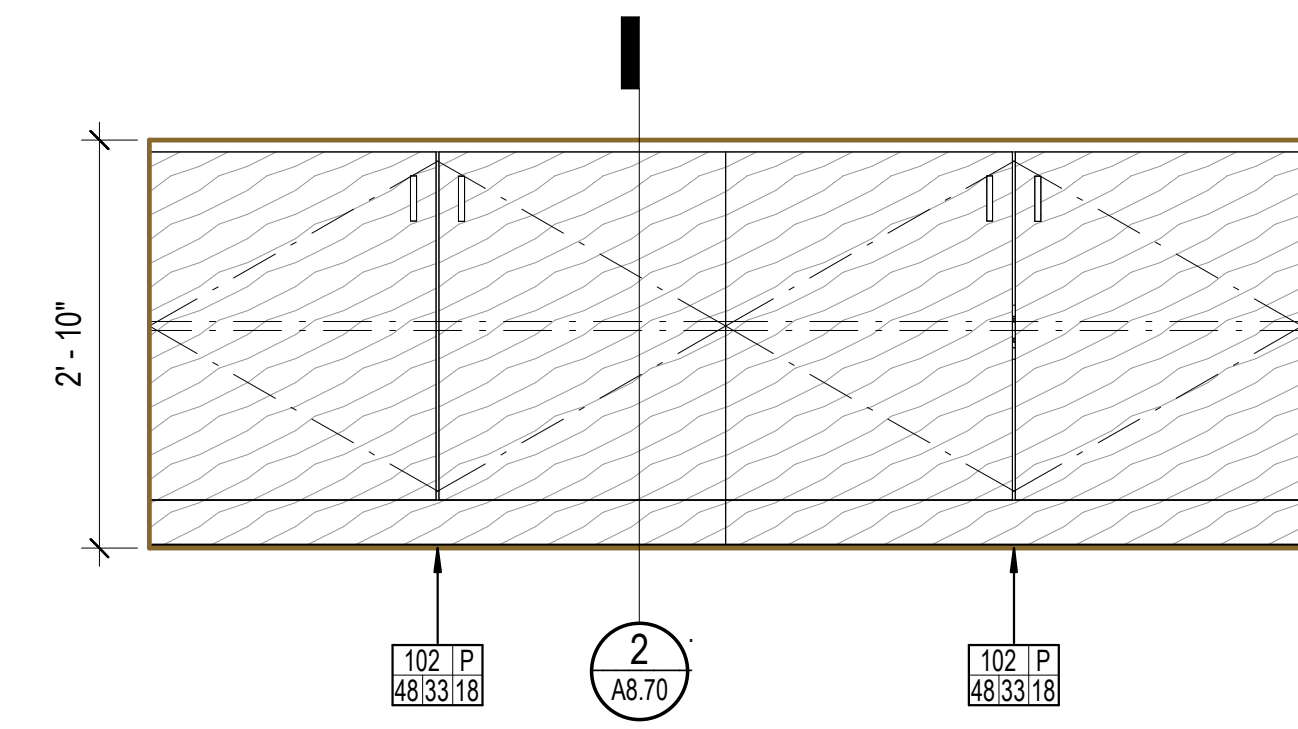
1 STAFF ENTRY - SOUTH
A8.75 3/4" = 1'-0"



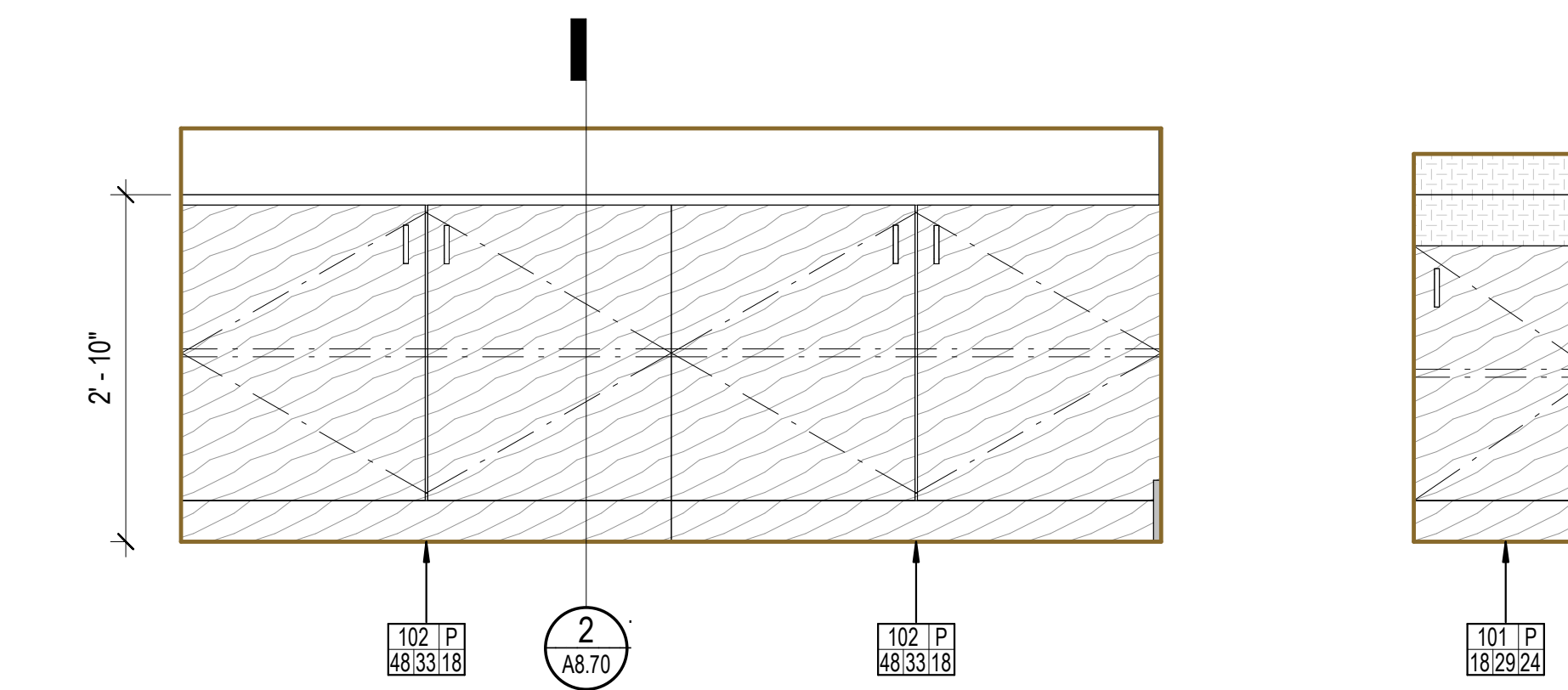
2 LAB 150 - WEST
A8.75 3/4" = 1'-0"



6 PLAN - STAFF LOUNGE - ISLAND CASEWORK
A8.75 3/4" = 1'-0"

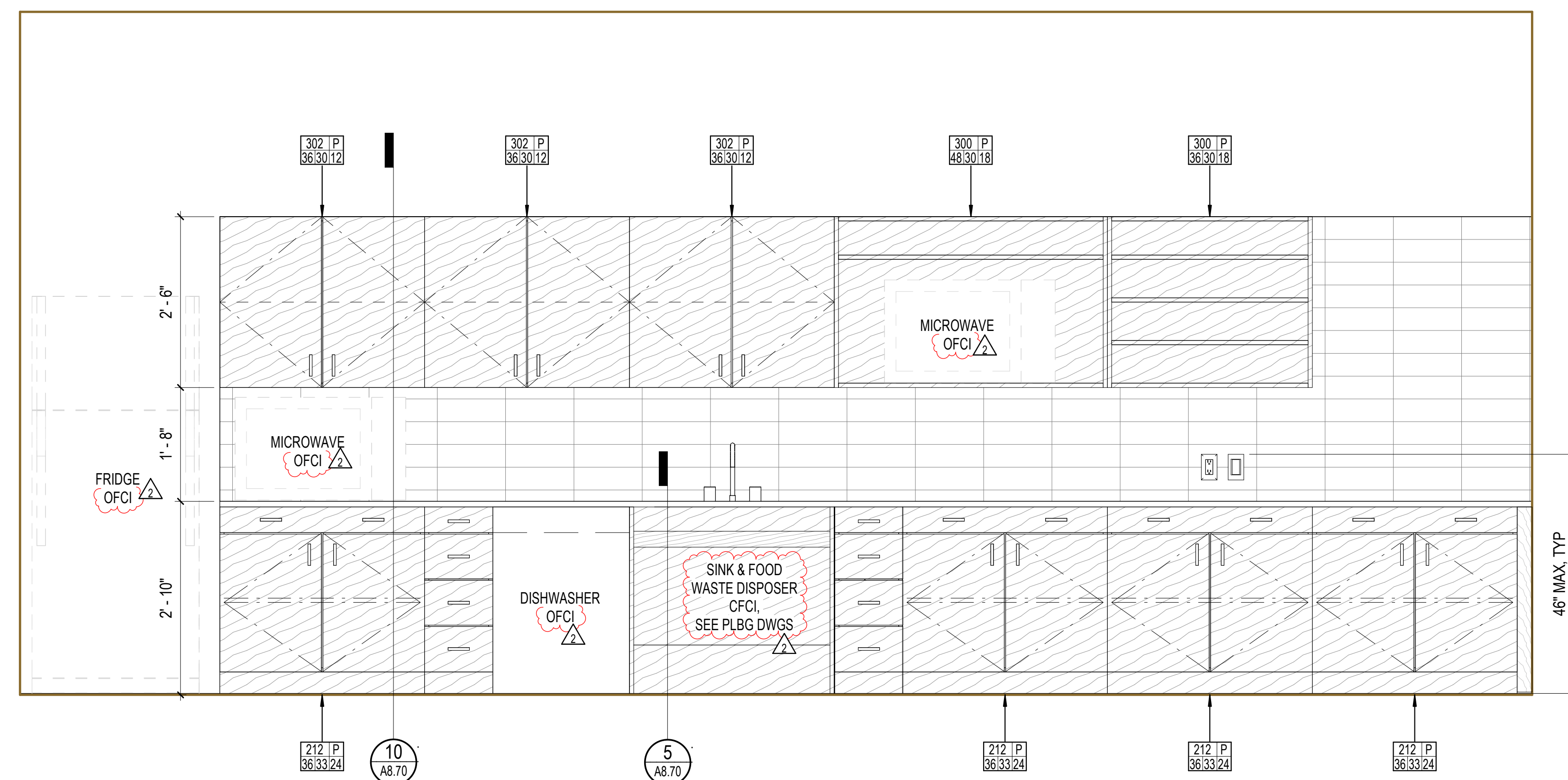


8 LAB 203 - EAST
A8.75 3/4" = 1'-0"

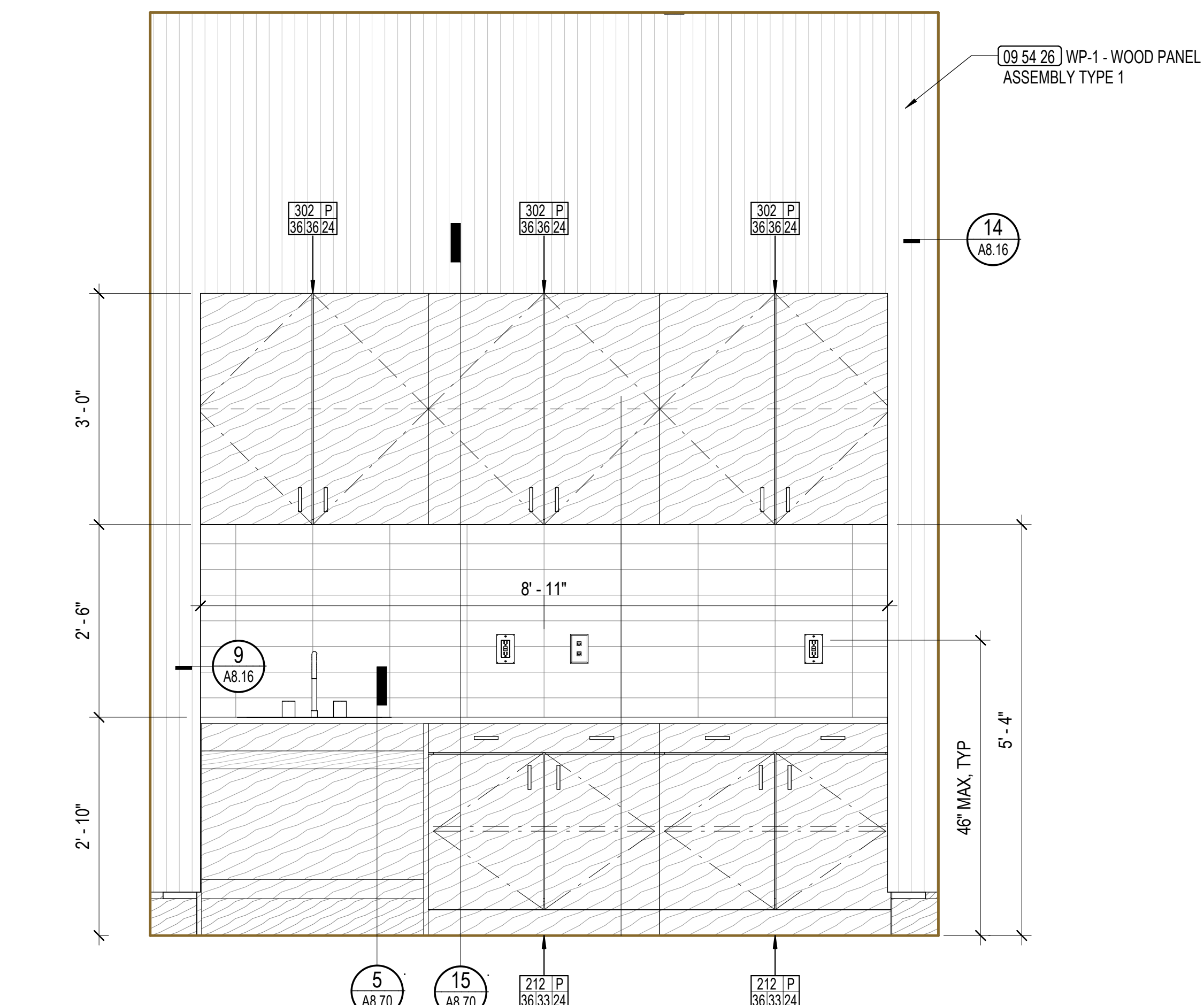


7 COPY PRINT CENTER - CASEWORK
A8.75 3/4" = 1'-0"

9 LACTATION ROOM - EAST
A8.75 3/4" = 1'-0"

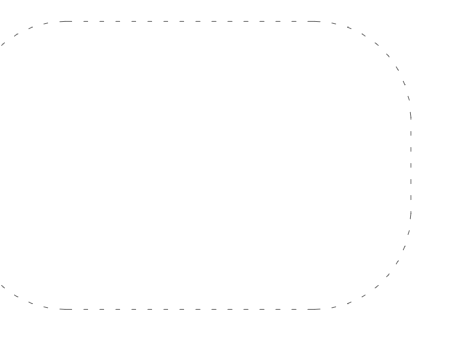


5 STAFF ROOM - KITCHENETTE
A8.75 3/4" = 1'-0"



3 LIBRARY CLASSROOM - KITCHENETTE
A8.75 3/4" = 1'-0"

APPROVALS

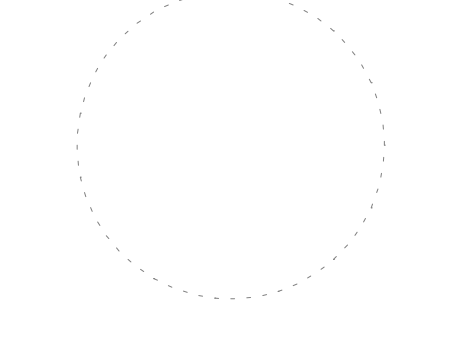


NOLL & TAM
ARCHITECTS

729 Heinz Avenue
Berkeley, CA 94710
tel 510.542.2200
fax 510.542.2201



SEAL



PROJECT TITLE

**Peralta Community College District
Laney Library & Learning Resource Center
(Building 100 Replacement)**

900 Fallon Street, Oakland, CA 94607

ISSUE FOR BID

ISSUE DATE	03/31/23
NAT. JOB NUMBER	21942
REVISIONS	
DATE	DESCRIPTION
2 05/03/2024	Addendum No. 02

SHEET TITLE
INTERIOR - CASEWORK PLANS & ELEVATIONS

SHEET NUMBER

A8.75