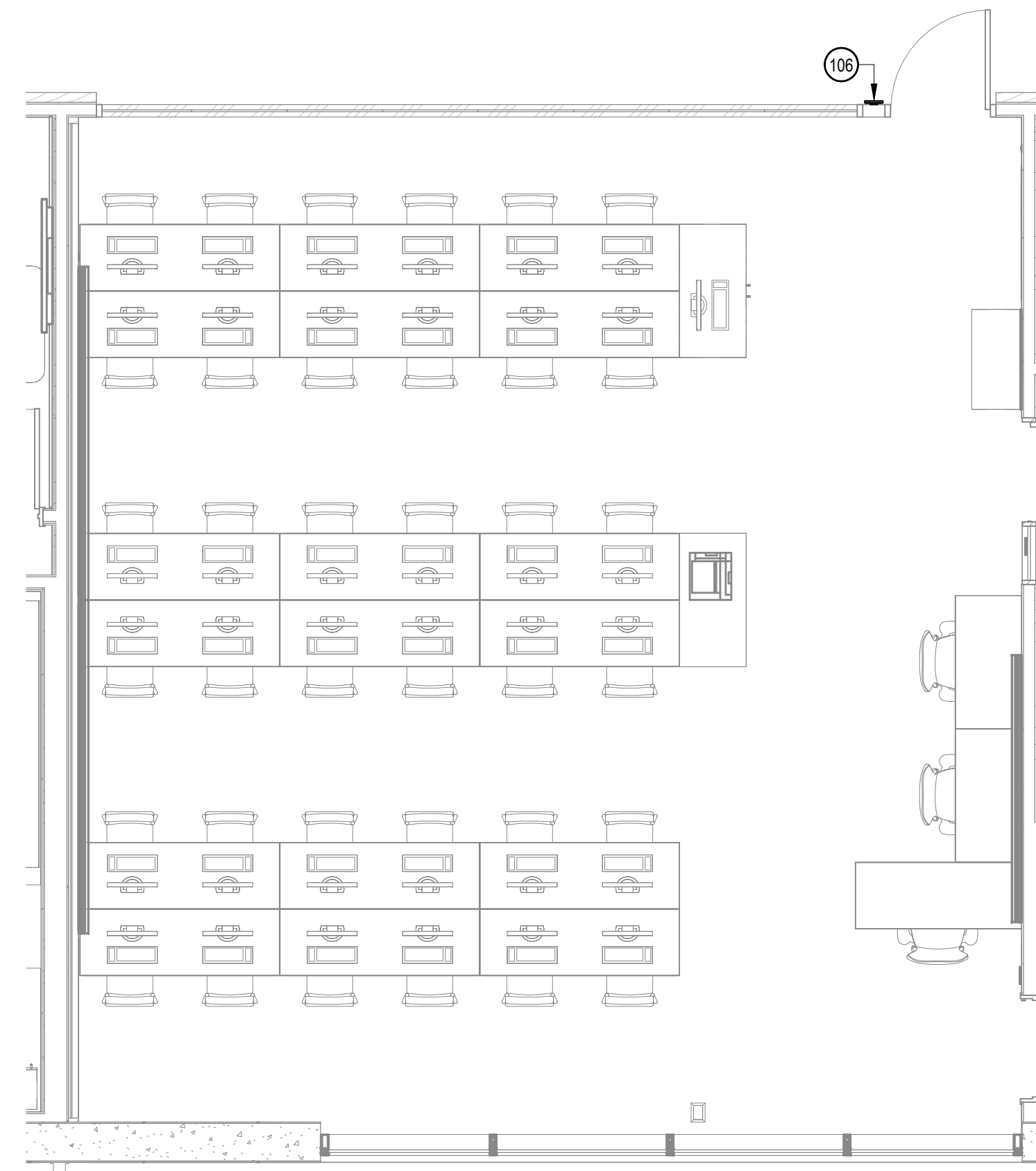
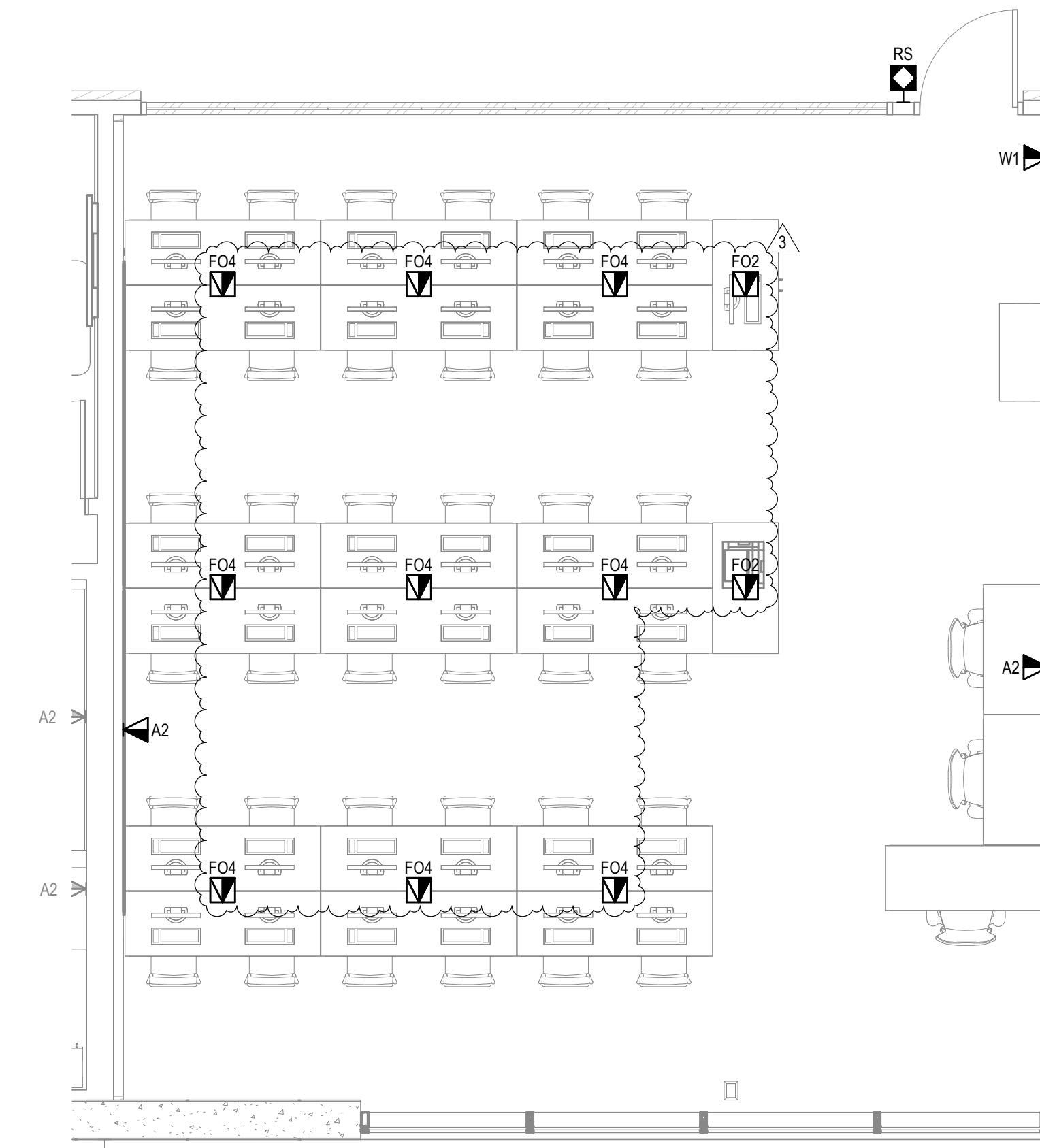


3 REFLECTED CEILING PLAN  
SCALE: 1/4"=1'-0"



2 EQUIPMENT PLAN  
SCALE: 1/4"=1'-0"



1 INFRASTRUCTURE PLAN  
SCALE: 1/4"=1'-0"

SHEET NOTES

1. REFER TO ARCHITECTURAL PLANS FOR EXACT LOCATIONS OF OUTLETS, DEVICES, AND EQUIPMENT. ALSO REFER TO ELECTRICAL PLANS TO COORDINATE FINAL LOCATIONS OF OUTLETS, DEVICES, AND EQUIPMENT.
2. REFER TO OVERALL PLANS FOR TELECOM DEVICES SERVING LOCATIONS.
3. REFER TO SHEET T02 FOR PATHWAY REQUIREMENTS.
4. ALIGN CENTER OF DISPLAY TO CENTERLINE OF FURNITURE. REFER TO ARCHITECTURAL DRAWINGS FOR THE FURNITURE LOCATION.
5. SEE INSTALLATION DETAIL IN THIS SET.

APPROVALS

**NOLL & TAM**  
ARCHITECTS

729 Heinz Avenue  
Berkeley, CA 94710  
tel 510.542.2200  
fax 510.542.2201

**CAVAGNERO**  
MARK CAVAGNERO ASSOCIATES ARCHITECTS  
1845 KATEWALK STREET, SUITE 200 T. 415.388.8844  
SAN FRANCISCO, CALIFORNIA 94111 F. 415.388.8943  
www.cavagnero.com

SEAL

**TEECOM**  
1222 Broadway  
Oakland, CA  
94612  
510.332.2800  
www.teecom.com

PROJECT TITLE

**Peralta Community  
College District  
Laney Library &  
Learning  
Resource Center  
(Building 100  
Replacement)**

900 Fallon Street, Oakland, CA  
94607

ISSUE FOR BID

ISSUE DATE	03/31/2023
NAT. JOB NUMBER	21942
REVISIONS	
DATE	DESCRIPTION
3 05/16/2024	Addendum No. 03

DRAWN BY: **JA** CHECKED BY: **DM**  
SHEET TITLE  
**ENLARGED ROOM PLAN  
- WRITING CENTER LAB  
(DROP-IN)**

SHEET NUMBER

**T5.22**