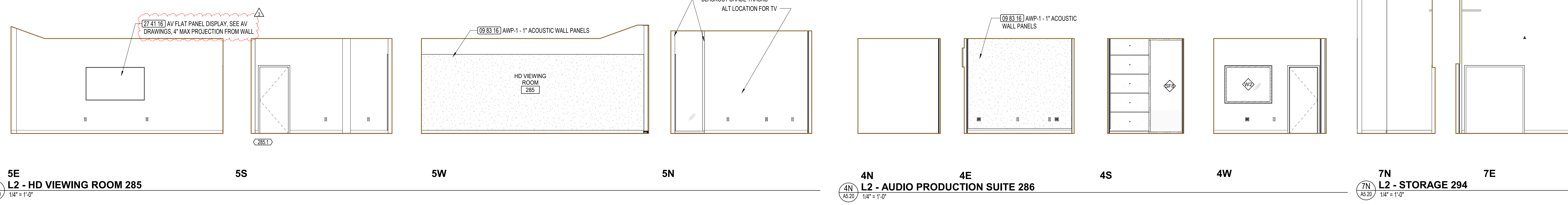


2W 2N 2E 2S
L2 - AUDIO CONTROL ROOM 284A
1/4" = 1'-0"

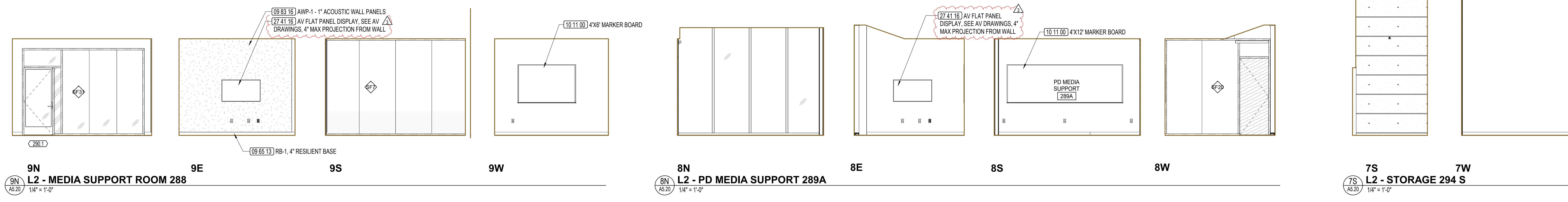
1W 1N 1E 1S
L2 - WEB DESIGN STUDIO 284
1/4" = 1'-0"



5E 5S 5W 5N
L2 - HD VIEWING ROOM 285
1/4" = 1'-0"

4N 4E 4S 4W
L2 - AUDIO PRODUCTION SUITE 286
1/4" = 1'-0"

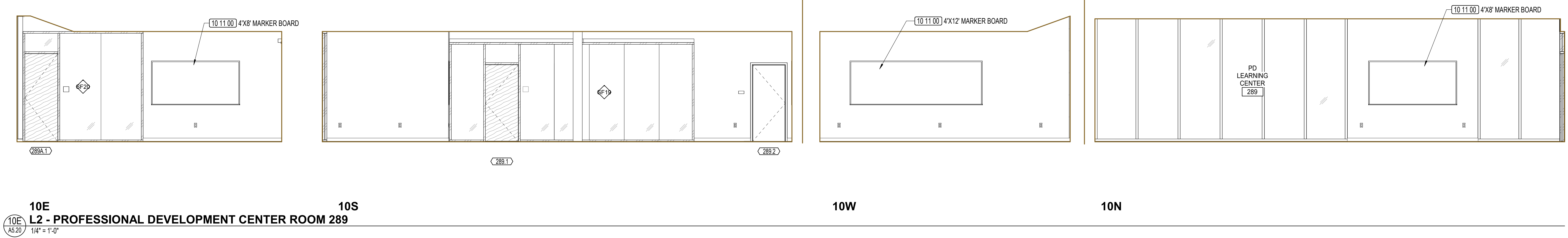
7N 7E
L2 - STORAGE 294
1/4" = 1'-0"



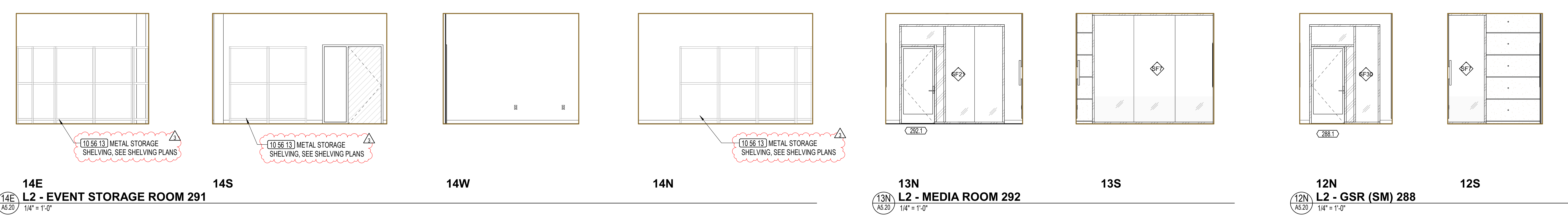
9N 9E 9S 9W
L2 - MEDIA SUPPORT ROOM 288
1/4" = 1'-0"

8N 8E 8S 8W
L2 - PD MEDIA SUPPORT 289A
1/4" = 1'-0"

7S 7W
L2 - STORAGE 294 S
1/4" = 1'-0"



10E 10S 10W 10N
L2 - PROFESSIONAL DEVELOPMENT CENTER ROOM 289
1/4" = 1'-0"



14E 14S 14W 14N
L2 - EVENT STORAGE ROOM 291
1/4" = 1'-0"

13N 13S
L2 - MEDIA ROOM 292
1/4" = 1'-0"

12N 12S
L2 - GSR (SM) 288
1/4" = 1'-0"

GENERAL NOTES

- SEE FLOOR PLANS FOR DOOR IDENTIFICATION
- SEE LAYOUT PLANS FOR PARTITION IDENTIFICATION
- SEE SHEET A2.51 FOR DOOR SCHEDULE
- SEE M SERIES FOR STAIR AND ELEVATOR SHEETS
- SEE SHEET A8.10 FOR INTERIOR WALL PARTITION TYPES
- SEE SHEET A8.16 FOR WALL FINISH ASSEMBLIES
- SEE SHEETS A8.51 & A8.52 FOR INTERIOR STOREFRONT AND WINDOW TYPES
- SEE SHEET A8.70 FOR CASEWORK TYPES
- SEE A9.10 FOR ROOM FINISH SCHEDULE
- APPLY 095666 INTUMESCENT FIREPROOFING TO ALL EXPOSED STEEL STRUCTURE, INCLUDING COLUMNS, BEAMS, AND ATTACHMENTS TYP. SPRAY PRIMARY STRUCTURAL STEEL MEMBERS HIDDEN FROM VIEW WITH 078100 APPLIED CEMENTITIOUS FIREPROOFING
- SEE STRUCTURAL DRAWINGS FOR BACKING DETAILS

KEYNOTE LEGEND	
Key Value	Keynote Text
09 65 13 A2	09 65 13 RB-1, 4" RESILIENT BASE
09 83 16 A1	09 83 16 AWP-1 - 1" ACOUSTIC WALL PANELS
10 11 00 A3	10 11 00 4'X8' MARKER BOARD
10 11 00 A4	10 11 00 4'X8' MARKER BOARD
10 11 00 A6	10 11 00 4'X12' MARKER BOARD
10 56 13	10 56 13 METAL STORAGE SHELVING, SEE SHELVING PLANS
28 41 16 A9	27 41 16 AV FLAT PANEL DISPLAY, SEE AV DRAWINGS, 4" MAX PROJECTION FROM WALL

LEGEND

WOOD FINISHES
SEE A8.16 FOR WOOD WALL FINISH DETAILS.

WOOD GRILLE
WOOD MICROPERF PANEL
WOOD FINISH

MISC FINISHES
FABRIC WRAPPED PANEL
MISCELLANEOUS
FIRE EXTINGUISHER CABINET

PROJECT TITLE

**Peralta Community College District
Laney Library & Learning Resource Center (Building 100 Replacement)**
900 Fallon Street, Oakland, CA 94607

ISSUE FOR BID

ISSUE DATE	03/31/23
NAT. JOB NUMBER	21942
REVISIONS	
DATE	DESCRIPTION
3 05/16/2024	Addendum No. 03

SHEET TITLE
INTERIOR ELEVATIONS - L2 284-294

SHEET NUMBER
A5.20