

SHEET INDEX

C0.01	CIVIL INDEX, NOTES & LEGEND SHEET
C1.00	EXISTING CONDITIONS
C1.01	TREE PROTECTION PLAN
C2.00	DEMOLITION PLAN
C3.00	BUILDING PAD ROUGH GRADING PLAN
C4.00	UTILITY PLAN
C5.00	7TH STREET IMPROVEMENT PLAN
C5.01	7TH STREET IMPROVEMENT DETAILS
C6.00	DETAIL SHEET
C7.00	STORMWATER CONTROL PLAN
C7.01	STORMWATER CONTROL DETAILS
C7.02	EROSION CONTROL PLAN
C7.03	EROSION CONTROL DETAILS

ABBREVIATIONS

AB	AGGREGATE BASE
AC	ASPHALT CONCRETE
AD	AREA DRAIN
ADR	ACCESS COMPLIANT RAMP
BC	BEGIN CURVE
BVC	BEGIN VERTICAL CURVE
C	CONDUIT
CAB	CABINET
CB	CATCH BASIN
CWS/R	CHILLED WATER SUPPLY / CHILLED WATER RETURN
CIP	CAST IRON PIPE
CJ	CONTROL JOINT
CL	CENTERLINE / CONTROL LINE
CP	CONTROL POINT
CUP	CENTRAL UNIT PLANT PROJECT
DI	DROP INLET
DL	DAYLIGHT
DMM	DEEP MIXING METHOD
DPW	DEPARTMENT OF PUBLIC WORKS
DRIVEWAY	DRIVEWAY
E	ELECTRIC
EMUD	EAST BAY MUNICIPAL WATER DISTRICT
EC	END CURVE
EG	EXISTING GRADE
ELEV	ELEVATION
EP	EDGE OF PAVEMENT
EX	EXISTING
EVC	END OF VERTICAL CURVE
FG	FINISH GRADE
FL	FLOWLINE
FS	FINISH SURFACE
FW	FIRE WATER
GB	GRADE BREAK
HDPE	HIGH DENSITY POLYETHYLENE PIPE
HP	HIGH POINT
HV	HIGH VOLTAGE
HWS/R	HOT WATER SUPPLY / HOT WATER RETURN
INV	INVERT
IRR	IRRIGATION
LF	LINEAR FEET
LP	LOW POINT
LRC	LEARNING RESOURCE CENTER
M.E.P.	MECHANICAL ELECTRICAL PLUMBING
MH	MANHOLE
ML & CS	MORTAR LINED AND COATED STEEL
NTS	NOT TO SCALE
PC	POINT ON CURVE
PCC	PORTLAND CEMENT CONCRETE
PERF	PERFORATED
PG&E	PACIFIC GAS & ELECTRIC
PRC	POINT OF REVERSE CURVE
PRO	PROPOSED
PT	POINT OF TANGENCY
PVC	POLYVINYL CHLORIDE PIPE
RCP	REINFORCED CONCRETE PIPE
SD	STORM DRAIN
SDCO	STORM DRAIN CLEANOUT
SF	SQUARE FEET
SLD	SEE LANDSCAPE DRAWINGS
SS	SANITARY SEWER
SSD	SEE STRUCTURAL DRAWINGS
STA	STATION
STL	STEEL
TG	TOP OF GRATE
TW	TOP OF WALL
tw	TOE OF WALL
TYP	TYPICAL
UG	UNKNOWN UNDERGROUND UTILITY - FOUND IN UTILITY SURVEY
UN	UNLESS NOTED OTHERWISE
VC	VERTICAL CURVE
VCP	VITRIFIED CLAY PIPE
VF	VERIFY IN FIELD
W	WATER
XMFR	TRANSFORMER

GENERAL NOTES

- WORK SHOWN HEREON SHALL BE DONE IN ACCORDANCE WITH PERALTA COMMUNITY COLLEGE DISTRICT BUILDING DESIGN & CONSTRUCTION STANDARDS, LATEST EDITION, THE STANDARD SPECIFICATIONS FOR THE STATE OF CALIFORNIA DEPARTMENT OF TRANSPORTATION, LATEST EDITION AND THE APPLICABLE UTILITY AGENCY STANDARD PLANS AND SPECIFICATIONS, LATEST EDITION.
- THE CONTRACTOR SHALL ASSUME SOLE AND COMPLETE RESPONSIBILITY FOR THE JOB SITE CONDITIONS, INCLUDING SAFETY OF ALL PERSONS AND PROPERTY, DURING THE COURSE OF CONSTRUCTION OF THIS PROJECT. THIS REQUIREMENT SHALL APPLY CONTINUOUSLY, AND SHALL NOT BE LIMITED TO NORMAL WORKING HOURS. THE CONTRACTOR FURTHER ASSUMES PROFESSIONAL LIABILITY FROM ANY AND ALL LIABILITY, REAL OR ALLEGED, IN CONNECTION WITH THE PERFORMANCE OF WORK ON THIS PROJECT, EXCEPTING LIABILITY ARISING FROM THE SOLE NEGLIGENCE OF THE DESIGN PROFESSIONAL.
- PRIOR TO COMMENCING CONSTRUCTION OPERATIONS, THE CONTRACTOR SHALL VERIFY ALL INTERFACES BETWEEN EXISTING CONDITIONS AND NEW CONSTRUCTION FOR GRADING AND DRAINAGE, INCLUDING LOCATION AND ELEVATION OF EXISTING UNDERGROUND OR AT GRADE FACILITIES AT CROSSINGS WITH PROPOSED UNDERGROUND STORM DRAIN FACILITIES. IF CONDITIONS DIFFER FROM THOSE SHOWN ON THE PLANS, THE CONTRACTOR SHALL NOTIFY THE ENGINEER AND SHALL NOT BEGIN CONSTRUCTION OPERATIONS UNTIL THE CHANGED CONDITIONS HAVE BEEN EVALUATED.
- THE CONTRACTOR SHALL BE RESPONSIBLE FOR THE REVIEW AND COORDINATION OF ALL CONTRACT DOCUMENTS PRIOR TO THE START OF CONSTRUCTION. ANY DISCREPANCIES THAT OCCUR SHALL BE BROUGHT TO THE ATTENTION OF THE ENGINEER PRIOR TO THE START OF CONSTRUCTION SO THAT A CLARIFICATION CAN BE ISSUED. ANY WORK PERFORMED IN CONFLICT WITH THE CONTRACT DOCUMENTS SHALL BE CORRECTED BY THE CONTRACTOR AT THEIR OWN EXPENSE.
- THE ENGINEER PREPARING THESE PLANS WILL NOT BE RESPONSIBLE FOR, OR LIABLE FOR, UNAUTHORIZED CHANGES TO OR USES OF THESE PLANS. ALL CHANGES TO THE PLANS MUST BE IN WRITING AND MUST BE APPROVED BY THE ENGINEER.
- NOTES AND DETAILS ON DRAWINGS SHALL TAKE PRECEDENCE OVER GENERAL NOTES AND TYPICAL DETAILS. WHERE NO DETAILS ARE GIVEN, CONSTRUCTION SHALL BE AS SHOWN FOR SIMILAR WORK.
- THE CONTRACTOR SHALL OBTAIN ALL APPROPRIATE JURISDICTIONAL AGENCY PERMITS WHICH MAY BE NECESSARY TO ACCOMPLISH WORK SHOWN ON THESE PLANS.
- WATER SHALL BE USED TO CONTROL DUST DURING CONSTRUCTION OPERATIONS.
- THE CONTRACTOR SHALL NOTIFY THE GEOTECHNICAL ENGINEER 48 HOURS PRIOR TO COMMENCING WORK. THE GEOTECHNICAL ENGINEER SHALL OBSERVE CONSTRUCTION TO VERIFY THAT EXISTING AND INSTALLED CONDITIONS, GRADING IN THAT AREA WILL STOP UNTIL APPROVED CORRECTIVE MEASURES ARE OBTAINED.
- IF, AT ANY TIME DURING GRADING OPERATIONS, ANY UNFAVORABLE GEOLOGICAL CONDITIONS ARE ENCOUNTERED, GRADING IN THAT AREA WILL STOP UNTIL APPROVED CORRECTIVE MEASURES ARE OBTAINED.
- ALL RAMP AND OTHER ACCESSIBILITY ACCOMMODATIONS ARE INTENDED TO COMPLY WITH THE CURRENT STANDARDS UNDER THE AMERICANS WITH DISABILITIES ACT. THE CONTRACTOR SHALL NOTIFY THE CIVIL ENGINEER IF ANY PROPOSED IMPROVEMENTS ARE NOT CONSISTENT WITH THE STANDARDS.
- ALL PATHWAYS AND/OR ROADWAYS SHALL BE SWEEPED AND KEPT CLEAN AT THE END OF EACH DAY AND SHALL COMPLY WITH ALL APPLICABLE LOCAL JURISDICTIONAL REQUIREMENTS FOR THE DURATION OF THE PROJECT WORK.
- THE CONTRACTOR SHALL CONTACT UNDERGROUND SERVICE ALERT (800-227-2600) A MINIMUM OF 48 HOURS PRIOR TO EXCAVATION.
- THE CONTRACTOR SHALL OBTAIN AN O.S.H.A. PERMIT FROM THE CALIFORNIA DIVISION OF INDUSTRIAL SAFETY PRIOR TO THE CONSTRUCTION OF TRENCHES OR EXCAVATIONS WHICH ARE 5 OR DEEPER. ALL TRENCHES 5' IN DEPTH OR GREATER SHALL BE SHORED AND BRACED ACCORDING TO STATE LAW.
- UTILITIES AS SHOWN CONFORM TO AVAILABLE RECORD DATA. THE EXISTENCE, LOCATION AND CHARACTERISTICS OF UNDERGROUND UTILITY INFORMATION SHOWN ON THESE PLANS HAVE BEEN OBTAINED FROM A REVIEW OF AVAILABLE RECORD DATA. NO REPRESENTATION IS MADE AS TO THE ACCURACY OR COMPLETENESS OF SAID UTILITY INFORMATION. IT IS THE CONTRACTOR'S RESPONSIBILITY TO VERIFY LOCATION AND DEPTHS BY POT-HOLING OF ALL UTILITIES WITH APPROPRIATE AGENCIES, AND TO TAKE PRECAUTIONARY MEASURES TO PROTECT THE UTILITY LINES SHOWN AND ANY OTHER LINES NOT OF RECORD OR NOT SHOWN ON THESE PLANS. ANY CONFLICTS SHALL BE REPORTED IMMEDIATELY TO THE ENGINEER.
- RECORD DATA REFERENCES FOR EXISTING UTILITIES INCLUDE:
 - "CIVIC CENTER SITE" PLANS, DATED 2/26/88, BY SHIMMOR, OWINGS & MERRILL ARCHITECTS
 - "LANEY COLLEGE INTERIM HOUSING" PLANS, DATED 11/28/07, BY POWELL & PARTNERS ARCHITECTS
 - "ELECTRICAL AND COMM. SITE PLAN" BY YEI ENGINEERS, INC
- STORM DRAINAGE SYSTEMS SHOWN ON THESE PLANS HAVE BEEN DESIGNED FOR THE FINAL SITE CONDITION AT COMPLETION OF THE PROJECT. THE CONTRACTOR IS RESPONSIBLE FOR MAINTAINING ADEQUATE DRAINAGE OF THE SITE DURING INTERIM CONDITIONS OF CONSTRUCTION.
- CONTRACTOR SHALL PROVIDE ALL MATERIAL, LABOR, EQUIPMENT, FOR INSTALLATION, IMPLEMENTATION, AND MAINTENANCE OF ALL SURFACE WATER POLLUTION PREVENTION MEASURES THROUGHOUT THE FULL EXTENT OF THE PROJECT.
- THIS SURVEY DOES NOT REFLECT A FINAL BOUNDARY DETERMINATION. THE BOUNDARY SHOWN HEREON IS DEPICTED FOR GRAPHICAL PURPOSES ONLY.

POLLUTION CONTROL NOTES:

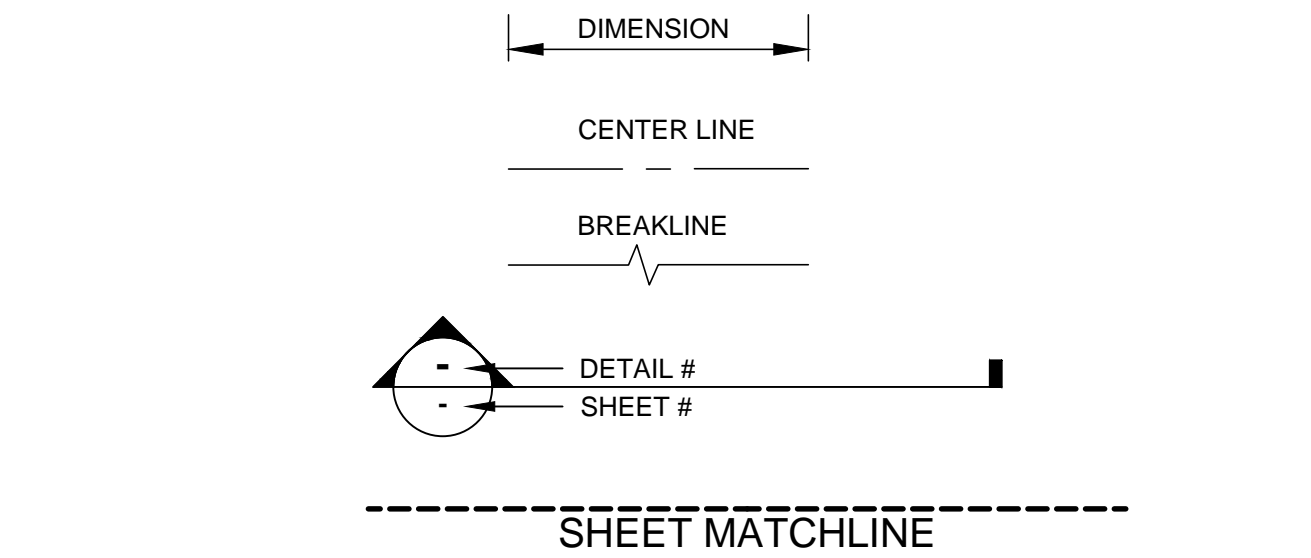
- PROJECT SITE WILL BE ROUGH GRADED IN ACCORDANCE WITH THE GRADING PLANS PREPARED BY CSW/ST2. FUTURE FINISH GRADING SHALL TO THE MAXIMUM EXTENT POSSIBLE DIRECT STORM WATER RUNOFF TO THE BIORETENTION AREAS OR AS INDICATED IN THE PLANS.
- IF SIGNIFICANT SEDIMENT OR OTHER VISUAL SYMPTOMS OF IMPURITIES ARE NOTICED IN THE STORM WATER, CONTACT THE CIVIL ENGINEER IMMEDIATELY.
- CONTRACTOR IS RESPONSIBLE FOR INSPECTION AND RESTORATION OF ALL ASPECTS OF THIS PLAN. SEDIMENT ON WALKWAYS AND ROADWAYS SHALL BE REMOVED BY SHOVEL OR BROOM AND PLACED IN STOCKPILES.
- ALL DUMPSTERS OR OTHER TRASH STORAGE ENCLOSURES SHALL BE UTILIZED SOLELY FOR NON-HAZARDOUS MATERIALS.
- ALL EMPLOYEES, CONTRACTORS, AND SUBCONTRACTORS ARE RESPONSIBLE FOR CONFORMING TO THE ELEMENTS SHOWN ON THIS PLAN OR RELATED DOCUMENTS. ANY CONTRACTOR PLANNING TO DO WORK ON-SITE SHALL BE RESPONSIBLE FOR OBTAINING AND REVIEWING ALL INFORMATION FROM COUNTY PRIOR TO START OF WORK AND EDUCATING ALL OF THEIR EMPLOYEES OR SUBCONTRACTORS AS TO THE CONTENTS OF THIS PLAN.
- THE CONTRACTOR IS RESPONSIBLE FOR OBTAINING ALL PERMITS AND FILING ALL PLANS WITH RELATED AGENCIES ASSOCIATED WITH THEIR WORK. THIS SHALL INCLUDE, BUT NOT BE LIMITED TO, PERMITS FOR STORAGE OF HAZARDOUS MATERIALS, BUSINESS PLANS, PERMITS FOR STORAGE OF FLAMMABLE LIQUIDS, GRADING PERMITS, OR OTHER PLANS OR PERMITS REQUIRED BY ALAMEDA COUNTY, OR OTHER AGENCIES. ALL PROPERTY OWNERS, CONTRACTORS, OR SUBCONTRACTORS WORKING ON-SITE ARE INDIVIDUALLY RESPONSIBLE FOR OBTAINING AND SUBMITTING ANY BUSINESS PLANS OR PERMITS REQUIRED BY COUNTY, STATE OR OTHER AGENCIES.
- CONTRACTOR MAY RELOCATE STORAGE, DELIVERY, OR WASH-OUT AREAS, TO SUIT THEIR OPERATIONS. RELOCATED LOCATION TO BE SHOWN ON PLANS MAINTAINED AT JOBSITE. CONTACT CIVIL ENGINEER FOR ANY PLAN REVISIONS. PLAN REVISIONS SHALL BE SUBMITTED TO COUNTY IF REQUESTED. CONTRACTOR TO MAINTAIN SECONDARY CONTAINMENT AS NECESSARY TO PROHIBIT POLLUTION AND TOXIC MATERIALS FROM ENTERING STORM DRAIN.
- USE OF EROSION CONTROL BLANKETS THAT CONTAIN PLASTIC NETTING SHALL BE PROHIBITED FROM THE PROJECT SITE.

URBAN RUNOFF POLLUTION NOTES:

- IF APPLICABLE STABILIZE ALL DENUDED AREAS AND MAINTAIN EROSION CONTROL MEASURES CONTINUOUSLY BETWEEN OCTOBER 15TH AND APRIL 15TH.
- REMOVE SPILLS PROMPTLY AND AVOID STOCKPIILING OF FILL MATERIALS WHEN RAIN IS FORECAST. IF RAIN THREATENS, STOCK-PILED SOILS AND OTHER MATERIALS SHALL BE TARPED, AT THE REQUEST OF THE ENGINEER.
- STORE, HANDLE AND DISPOSE OF CONSTRUCTION MATERIALS AND WASTES SO AS TO PREVENT THEIR ENTRY TO THE STORM DRAIN SYSTEM. CONTRACTOR MUST NOT ALLOW CONCRETE, WASHWATERS, SLURRIES, PAINT OR OTHER MATERIALS TO ENTER CATCH BASINS OR TO ENTER SITE RUNOFF.
- IF APPLICABLE USE FILTRATION OR OTHER MEASURES TO REMOVE SEDIMENT FROM DEWATERING EFFLUENT.
- NO CLEANING, FUELING OR MAINTAINING VEHICLES ON SITE SHALL BE PERMITTED IN ANY MANNER THAT ALLOWS DELETERIOUS MATERIALS TO ENTER CATCH BASINS OR TO ENTER SITE RUNOFF.
- USE OF PESTICIDES IS PROHIBITED. USE OF FERTILIZERS SHALL BE APPLIED AND CONTROLLED TO PREVENT POLLUTION RUNOFF.
- CONTRACTOR TO RELOCATE CONCRETE WASHDOWN, VEHICLE STORAGE DELIVERY, AND NON HAZARDOUS WASTE AREAS AS NECESSARY TO FACILITATE THEIR OPERATION AND PROMOTE POLLUTION CONTROL.

LINETYPES

EXISTING		PROPOSED
	CONTOUR - MAJOR	
	CONTOUR - MINOR	
	DIRT ROAD	
	EASEMENT	
	FENCE	
	FLOWLINE / SWALE	
	LIMITS OF CONSTRUCTION	
	RETAINING WALL	
	TOE OF BANK	
	TOP OF BANK	
	TREE DRIFLINE	N/A
	ELECTRICAL LINE	
	FIRE WATER	
	GAS LINE	
	HIGH VOLTAGE	N/A
	LIGHTING	N/A
	SANITARY SEWER	
	STORM DRAIN	
	STORM DRAIN	
	STORM DRAIN (PERFORATED)	
	TELECOM LINE	
	WATER	
	CHILLED WATER RETURN	
	CHILLED WATER SUPPLY	
	HOT WATER RETURN	
	HOT WATER SUPPLY	
	JOINT TRENCH	



SYMBOLS

EXISTING		PROPOSED
	BOLLARD	
	SIGN	
	TREE / TREE TO BE REMOVED	
	LIGHT - POST MOUNTED	
	SANITARY SEWER - CLEANOUT	
	SANITARY SEWER - MANHOLE	N/A
	STORM DRAINAGE - AREA DRAIN	
	STORM DRAINAGE - POP-UP EMITTER	
	STORM DRAINAGE - CLEANOUT	
	STORM DRAINAGE - DROP INLET	
	STORM DRAINAGE - MANHOLE	
	GAS VALVE	N/A
	UTILITY MANHOLE - ELECTRIC	
	FIRE DEPARTMENT CONNECTION	
	FIRE HYDRANT	N/A
	POST INDICATOR VALVE	
	WATER METER	N/A
	MECHANICAL JOINT - 1 1/2" BEND	
	MECHANICAL JOINT - 2 1/2" BEND	
	MECHANICAL JOINT - 45° BEND	
	MECHANICAL JOINT - 90° BEND	
	MECHANICAL JOINT - TEE	
	WATER VALVE	
	FOUND / SET - BENCHMARK	
	FOUND / SET - CONTROL POINT	

MATERIAL LEGEND

	BUILDING
	CLASS II AB
	CONCRETE
	PAVERS
	AC PLUG (6" MIN)
	BIORETENTION AREA
	LANDSCAPE AREA

POT HOLE INFORMATION

DATE	#	DESCRIPTION	DEPTH
6/30/2020	1	1.5" COPPER - WATER, 2" COPPER - WATER, 2" BLACK TAPE WRAPPED STEEL - GAS, 2" COPPER-WATER, 2" BLACK TAPE WRAPPED PLASTIC-ELEC.	3'-1.5" 3'-0" 3'-1.5" 3'-1" 2'-4.5" 2'-0"
7/1/2020	2	115KV DUCT BANK ENCASED IN GREY CONCRETE	TOP 4'-8" BOTTOM 8'-4"
6/30/2020	3	8" BLACK STEEL - UNKNOWN	1'-8"
6/30/2020	4	4" YELLOW PLASTIC - GAS	2'-11"
7/1/2020	5	115KV DUCT BANK ENCASED IN GREY CONCRETE	6'-3"
7/2/2020	6	36" ML & CS - WATER	13'-8"
6/30/2020	7	36" ML & CS - WATER	8'-3"
6/30/2020	8	18" ASBESTOS CONCRETE - SD	5'-7"
7/2/2020	9	NO UTILITY FOUND	N/A
7/2/2020	10	** 12KV ENCASED IN GREY CONCRETE	TOP 2'-4" BOTTOM 2'-9"

* MEASUREMENTS ARE TO TOP OF PIPE OR CONCRETE UNLESS NOTED OTHERWISE

** PRIVATE 12KV DUCT BANK PER SHEET E401 OF CIVIC CENTER SITE PLANS INCLUDES 4x4', 1x5' CONDUIT

SURVEY CONTROL POINTS

CP #	NORTHING	EASTING	ELEVATION	DESCRIPTION
2	2116788.244919	6052293.367427	18.13	CP CUT X
9	2116724.090685	6052352.714069	17.51	CP CUT X
10	2116860.886068	6052344.027591	17.35	CP CUT X
16	2116745.914899	6052553.301559	17.75	CP 60D
17	2116741.800273	6052359.723717	18.20	CP 60D
19	2116797.727068	6052510.736814	17.93	CP MAG
22	2116849.623444	6052222.027888	17.68	CP MAG
25	2116889.744779	6052195.541673	19.18	CP 60D
51	2116502.619875	6052513.056277	15.35	MON (15NW50)
52	2116706.915393	6052311.669721	17.32	MON (15NW49)

BASIS OF TOPOGRAPHY

TOPOGRAPHY SHOWN WAS PERFORMED BY CSW/ST2 VIA FIELD SURVEY ON MARCH 6-8TH, 2019.

HORIZONTAL DATUM IS CALIFORNIA STATE PLANE COORDINATES, NORTH AMERICAN DATUM OF 1983 (NAD83), ZONE 3, EPOCH 2010.0000 PER GPS OPUS SOLUTION.

VERTICAL DATUM IS NORTH AMERICAN VERTICAL DATUM OF 1988 (NAVD88) PER GPS OPUS SOLUTION.

BCDC JURISDICTIONAL LINE IS A RESULT OF PLOTTING CONTOUR 5.63', WHICH WAS DETERMINED FROM TIDAL STATION 9414764 (OAKLAND INNER HARBOR), WHICH LISTS MHW AS 5.75' AND NAVD88 AS 0.12'. THE DIFFERENCE BEING 5.63'

GEOTECHNICAL REPORT

GEOTECHNICAL INVESTIGATION AND GEOLOGIC HAZARDS EVALUATION REPORT FOR LANEY COLLEGE LIBRARY LEARNING RESOURCE CENTER DATED FEBRUARY 28, 2020 WAS PREPARED BY FUGRO. ADDENDUM FOR DMM DESIGN RECOMMENDATIONS REPORT DATED JUNE 22, 2022.

APPROVALS

NOLL & TAM
ARCHITECTS

729 Heinz Avenue
Berkeley, CA 94710
tel 510.542.2200
fax 510.542.2201

CAVAGNERO
MARK CAVAGNERO ASSOCIATES ARCHITECTS
1048 Sutter Street, Suite 200
San Francisco, California 94111
www.cavagnero.com

SEAL



SIGNED
05/15/2024

CONSULTANT

CSW | ST2

CSW|Stueb-Struhs
Engineering Group, Inc.
127 Park Plaza
Redwood, CA 94001
tel 415.983.9850
fax 415.983.9855

Civil Engineers
Surveying & Mapping
Land Planning
Construction Management

Project Title

PROJECT TITLE

Peralta Community
College District
Laney Library & Learning Resource Center (Building 100 Replacement)

900 Fallon Street, Oakland, CA 94607

ISSUE FOR BID

ISSUE DATE	03/12/23
ISSUE JOB NUMBER	21942
REVISIONS	
DATE	DESCRIPTION
3 / 5/16/2024	Addendum No. 03

DRAWN BY JBD CHECKED BY RJS

SHEET TITLE
CIVIL INDEX, NOTES, & LEGEND

SHEET NUMBER

C0.01

