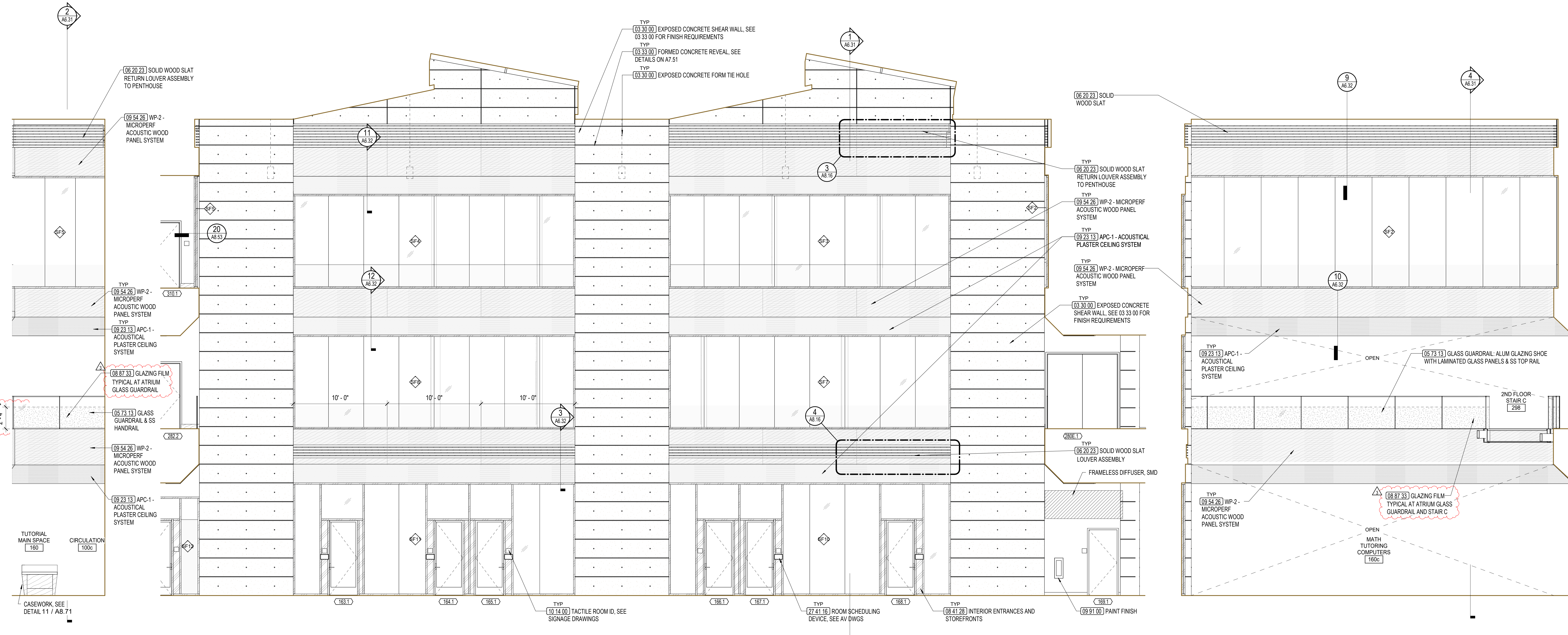


2 L3 - ATRIUM SOUTH
1/4" = 1'-0"

1 L2 - ATRIUM SOUTH
1/4" = 1'-0"



5 ATRIUM - WEST
1/4" = 1'-0"

4 ATRIUM - NORTH
1/4" = 1'-0"

3 ATRIUM - EAST
1/4" = 1'-0"

GENERAL NOTES

- SEE FLOOR PLANS FOR DOOR IDENTIFICATION
- SEE LAYOUT PLANS FOR PARTITION IDENTIFICATION
- SEE SHEET A2.51 FOR DOOR SCHEDULE
- SEE 44 SERIES FOR STAIR AND ELEVATOR SHEETS
- SEE SHEET A8.10 FOR INTERIOR WALL PARTITION TYPES
- SEE SHEET A8.16 FOR WALL FINISH ASSEMBLIES
- SEE SHEETS A8.51 & A8.52 FOR INTERIOR STOREFRONT AND WINDOW TYPES
- SEE SHEET A8.70 FOR CASEWORK TYPES
- SEE A8.10 FOR ROOM FINISH SCHEDULE
- APPLY 099646 INTUMESCENT FIREPROOFING TO ALL EXPOSED STEEL STRUCTURE, INCLUDING COLUMNS, BEAMS, AND ATTACHMENTS TYP. SPRAY PRIMARY STRUCTURAL STEEL MEMBERS HIDDEN FROM VIEW WITH 078.00 APPLIED CEMENTITIOUS FIREPROOFING
- SEE STRUCTURAL DRAWINGS FOR BACKING DETAILS

KEYNOTE LEGEND

Key Value	Keynote Text
03 30 00 B1	03 30 00 EXPOSED CONCRETE SHEAR WALL. SEE 03 33 00 FOR FINISH REQUIREMENTS
03 30 00 B2	03 30 00 EXPOSED CONCRETE FORM TIE HOLE
03 33 00 B3	03 33 00 FORMED CONCRETE REVEAL. SEE DETAILS ON A7.51
05 73 13 B1	05 73 13 GLASS GUARDRAIL & SS HANDRAIL
05 73 13 B2	05 73 13 GLASS GUARDRAIL: ALUM GLAZING SHOE WITH LAMINATED GLASS PANELS & SS TOP RAIL
06 20 23 B1	06 20 23 SOLID WOOD SLAT
08 41 28	08 41 28 INTERIOR ENTRANCES AND STOREFRONTS
08 87 33	08 87 33 GLAZING FILM
09 23 13	09 23 13 ACOUSTICAL GYPSUM PLASTERING
09 23 13 APC1	09 23 13 APC-1 ACOUSTICAL PLASTER CEILING SYSTEM
09 54 26 WP.2	09 54 26 WP-2 MICROPERF ACOUSTIC WOOD PANEL SYSTEM
09 91 00 A1	09 91 00 PAINT FINISH
09 96 46 A3	09 96 46 INTUMESCENT PAINT, TYP AT EXPOSED AESS STEEL COLUMNS
10 14 00 C1	10 14 00 TACTILE ROOM ID, SEE SIGNAGE DRAWINGS
23 37 00 C2	23 37 00 LINEAR BAR GRILLE DIFFUSER, SMD
27 41 16 A7	27 41 16 ROOM SCHEDULING DEVICE, SEE AV DIVS

LEGEND

WOOD FINISHES	MISC FINISHES
WOOD GRILLE	FABRIC WRAPPED PANEL
WOOD MICROPERF PANEL	MISCELLANEOUS
WOOD FINISH	FIRE EXTINGUISHER CABINET

PROJECT TITLE

**Peralta Community College District
Laney Library & Learning Resource Center (Building 100 Replacement)**

900 Fallon Street, Oakland, CA 94607

ISSUE FOR BID

ISSUE DATE	03/31/23
NAT. JOB NUMBER	21942
REVISIONS	
DATE	DESCRIPTION
3/5/16/2024	Addendum No. 03

SHEET TITLE
INTERIOR ELEVATIONS - ATRIUM

SHEET NUMBER
A5.12